

# TTV

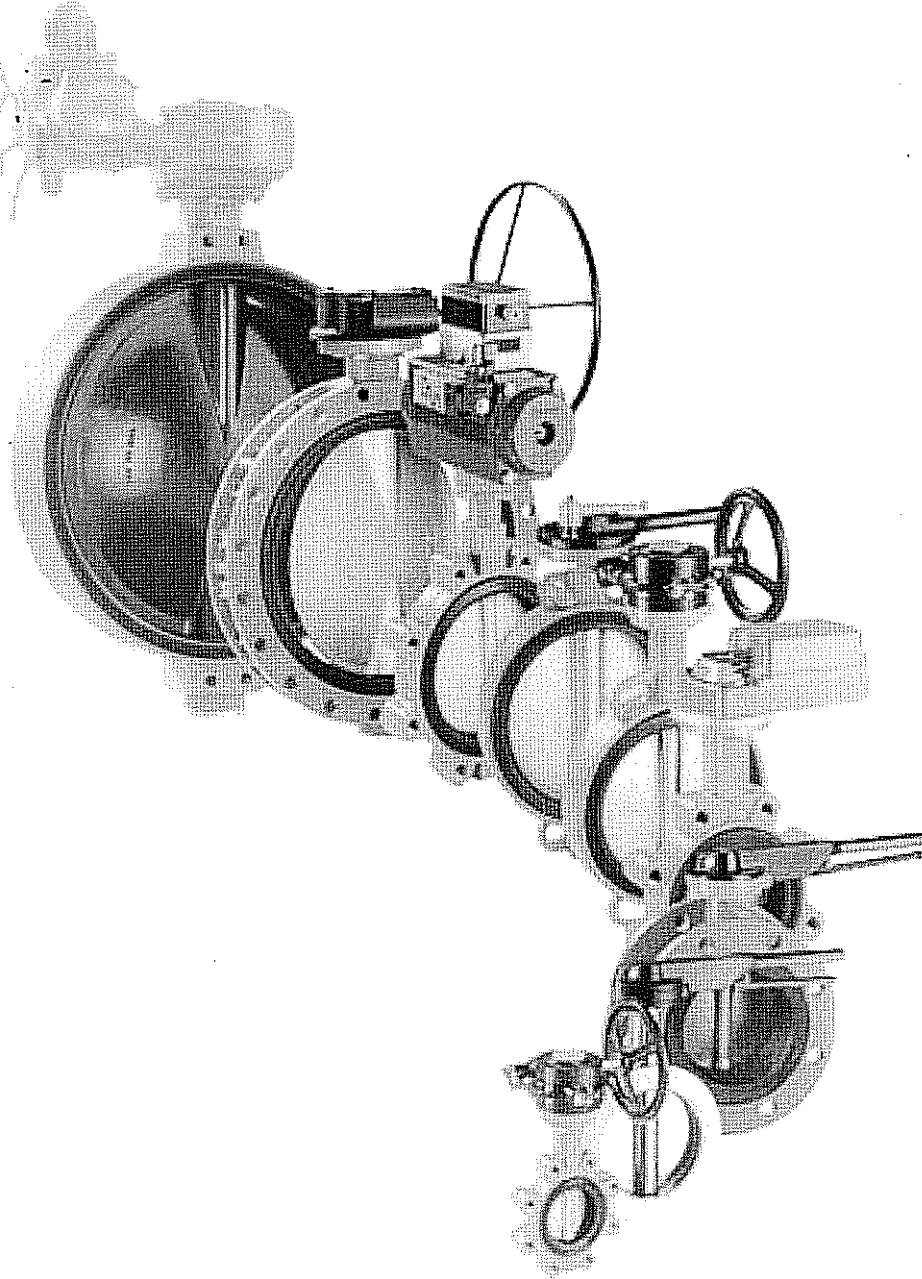
MANUAL OF WORKING INSTRUCTIONS,  
ASSEMBLING, MAINTENANCE AND  
STORAGE

*BUTTERFLY VALVES*

# CE



# MANUAL OF WORKING INSTRUCTIONS, ASSEMBLING, MAINTENANCE AND STORAGE.



**BUTTERFLY VALVES**





## INSTRUCTIONS MANUAL

- For BUTTERFLY VALVES Wafer, Lug and Flange type
- Range : From DN 32 to DN 1200

- 1) GENERAL
- 2) WARNINGS
- 3) WORKING CONDITIONS AND TECHNICAL INFORMATION
- 4) OPERATION AND WAY OF ROTATION
- 5) INSTALLATION INSTRUCTIONS
- 6) MAINTENANCE INSTRUCTIONS
- 7) STORAGE INSTRUCTIONS

### 1) GENERAL

This instructions manual contains important information concerning the installation, operation, maintenance and storage of *TTV* butterfly valves.

Please read carefully these instructions and keep them for future occasions.

It is important that only well- informed and qualified people operate the valves.

### 2) WARNINGS

- Make sure that the valves are used within the limits established in the technical specifications.
- Using the valves above the temperature limits can damage the internal and the external elements.
- Using the valves above the pressure limits can damage the internal and the external elements.
- Using the valve in corrosive environments, without the due protection, can damage the internal and the external elements.
- Do not try to dismount any part of the valve while it is mounted in the pipe, and do not do it neither if there is fluid inside.
- Purge the whole installation, being sure there is no air inside when the fluid is liquid.
- Do not dismount the shaft while the valve is installed in the pipe; the disc would be carried away through the pipe due to the pressure of the fluid.
- Make sure which is the rotation way of the valve when mounting any type of operation (there are stops clearly marked and opening / closing icons of the disc at 90°).

### 3) WORKING CONDITIONS AND TECHNICAL INFORMATION

#### - Fluids :

These valves are delivered for fluid as well as for gas services.

It is the customer's responsibility or the Engineering which leads the project, the decision of choosing the most appropriate materials for the required service, as well as the evaluation of the installation risks.

#### - Working pressure:

These valves are delivered for a working pressure of 16 bar maximum.

#### - Working temperature :

The standard valves delivered are between the range of temperature: from -10°C to +90°C.

#### - Ambient temperature:



The standard valves delivered are designed to work within the range: from  $-10^{\circ}\text{C}$  to  $+80^{\circ}\text{C}$ .

- Operation time:

These valves are delivered with a connecting flange as per ISO 5211.

The time of operation will vary depending on the type of operation mounted..

- Travel:

The standard construction has a rotating travel from 0 to 90 degrees and from 90 to 0 degrees.

- Lubrication:

TTV butterfly are not lubricated.

- Construction :

Movement transmission through the splined shaft and disc, designed for inside and outside installations.

- Protection and resistance against corrosion:

Every standard valve is delivered with protection against corrosion for normal environmental conditions.

For this reason the valves undergo a process of Rilsanization (RILSAN Polyamide 11).

Before installing the valves in aggressive environmental conditions, make sure you have chosen the appropriate protection.

- Valves labelling and designation :

The type of valve, diameter, pressure design, maximum working pressure, lining, reference... are stated in the valve designation.

*TTV* valves are delivered with labels containing the following information: TTV angram, type, model, type of operation, pressure design, maximum pressure, lining, manufacturing order, date and CE marking.

#### **4) OPERATION AND WAY OF ROTATION:**

In order to close the valve, the shaft is moved clockwise; to open the valve, the shaft is moved in the opposite direction.

The valve is regulated by means of the operation devices, which are the following:

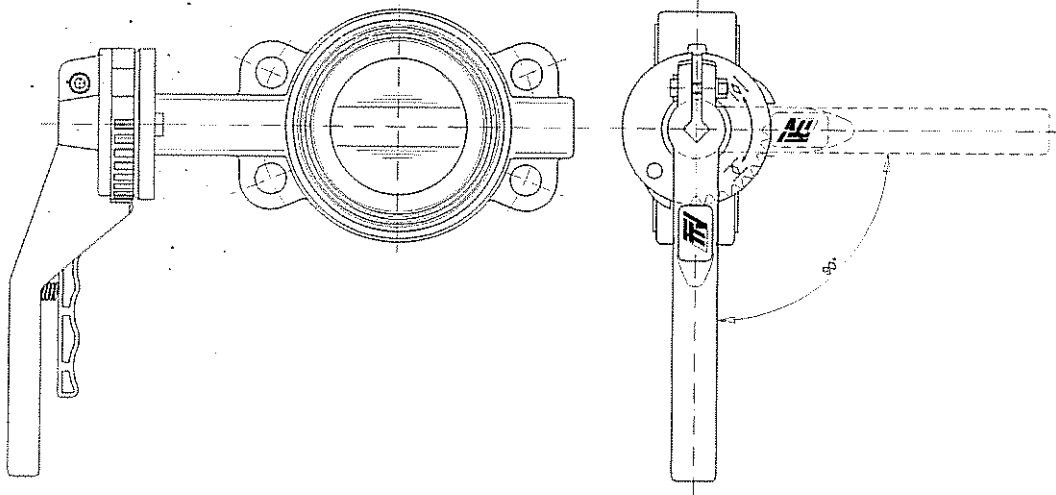
a) Manual actuator with lever

The regulation is carried out by means of the notch flange and the lever's latch.

For this purpose, the latch is clutched from the flange and it is turned in the appropriate direction to open or to close the valve.

Then the latch is clutched again in the flange in the desired position.

See figure A



b) manual actuator with Gearbox

The movement  $\frac{1}{4}$  turn ( $90^\circ$ ) is made by a wheel's turning, which at the same time moves a wormshaft-quadrant.

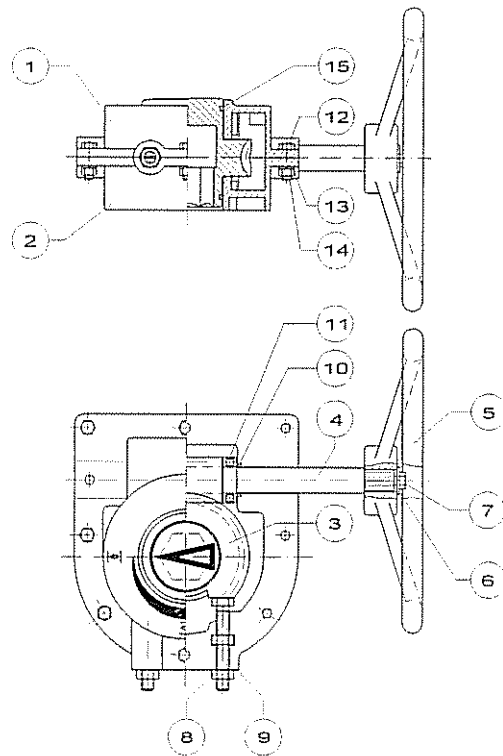
The movement is regulated by the bolts (item 9 in the drawing B).

For this purpose the screw is loosened (position 8) and the bolt is introduced or taken out depending on how open or close the disc is required. We would proceed the same way to close the disc completely.

It is necessary to check the indication arrow in the gearbox quadrant and the opening / closing icons of the gearbox.

There is no need to dismount any piece of the gearbox for this purpose.

See figure B



c) Pneumatic actuator

Request working instructions, assembly and maintenance for the specific actuator.

d) Actuator with electric actuator

Request working instructions, assembly and maintenance for the specific electric actuator.

## 5) INSTALLATION INSTRUCTIONS

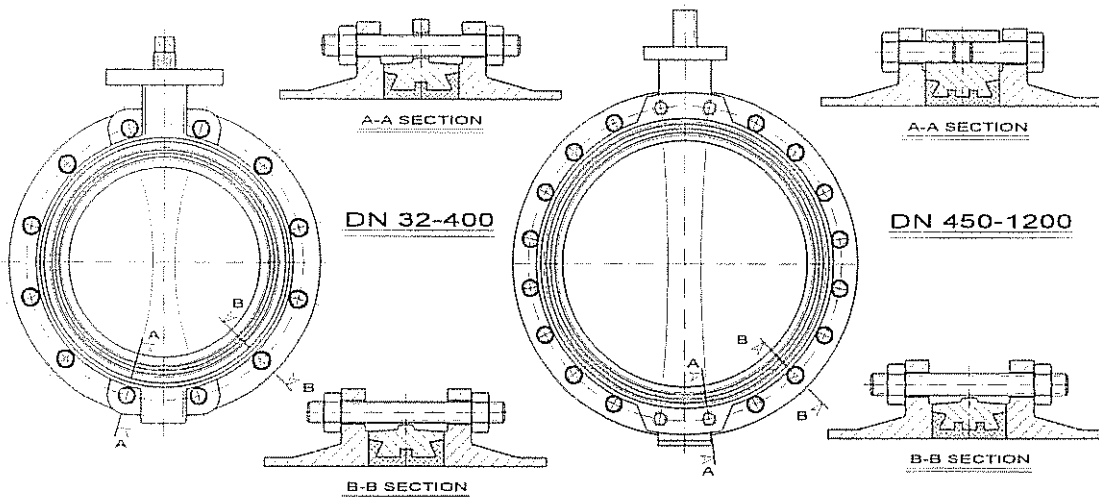
### 5:1) Installation of Wafer and Flange type valves

The valves are usually delivered slightly open. Check they are so before mounting them. Once the space for the valve is checked, they are put in line in the pipe. Then some bolts are placed in the pipe.

The next step is to open 90°C the disc and put the rest of the bolts with their nuts.

Finally it is proceed to tighten the nuts (following a triangular tightening scheme) with the purpose of having every bolt uniformly tighten and not producing any deformation in the liners.

We check that the valve can be opened and closed without any problem

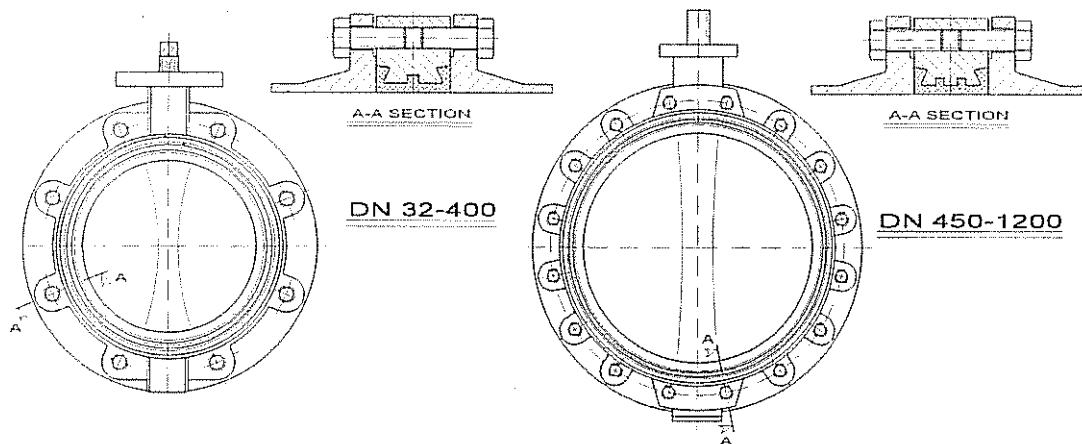


- NOTE (ONLY TO BE APPLIED TO FLANGE TYPE VALVES):**  
 IT IS NOT ALLOWED TO USE SCREWS WITH NUTS TO FIX THE FLANGES OF THE VALVE TO THE PIPE FLANGES, THIS MUST BE DONE WITH COMPLETE PASSING BOLTS AND NUTS.

### 5.2) Installation of LUG type valve

It follows the same procedure detailed for the other type of valves.

These valves should be installed with screws, whose length allows the perfect tightening between the flanges and the pipe. These screws cannot be longer than allowed.



### 5.3) Mounting position

*TTV* recommends that valves from DN 450 onward are installed with the shaft in horizontal position. The valves are bidirectional. They can be installed on any side as it is not necessary to keep the fluids direction.

### WARNINGS FOR INSTALLATION

- Before the valves are mounted, the liners have to be clean so as to guarantee the tightness of the valve.
- There has to be room for the valve to prevent the liner from any damage when introducing the valve.
- Be careful during its installation as the painting could be damaged.
- Make sure, during the assembling of heavy valves, that the louses and slings meet the security standards.

## 6) MAINTENANCE INSTRUCTIONS

TTV valves require little maintenance. However, due to the possible high working requirements, the following maintenance actions should be conducted, if so required.

The mounting and dismounting of the valve is only allowed to TTV staff or people specialised in this field. If these norms are not followed, then the guarantee won't have any validity.

6) Description and spare parts recommended.

6.1) Wafer, Lug and Flange type valves DN 32 to DN 200.

Remove the actuator and top adjustable flange (Fig. 6) by loosening the screws (pos. 9)

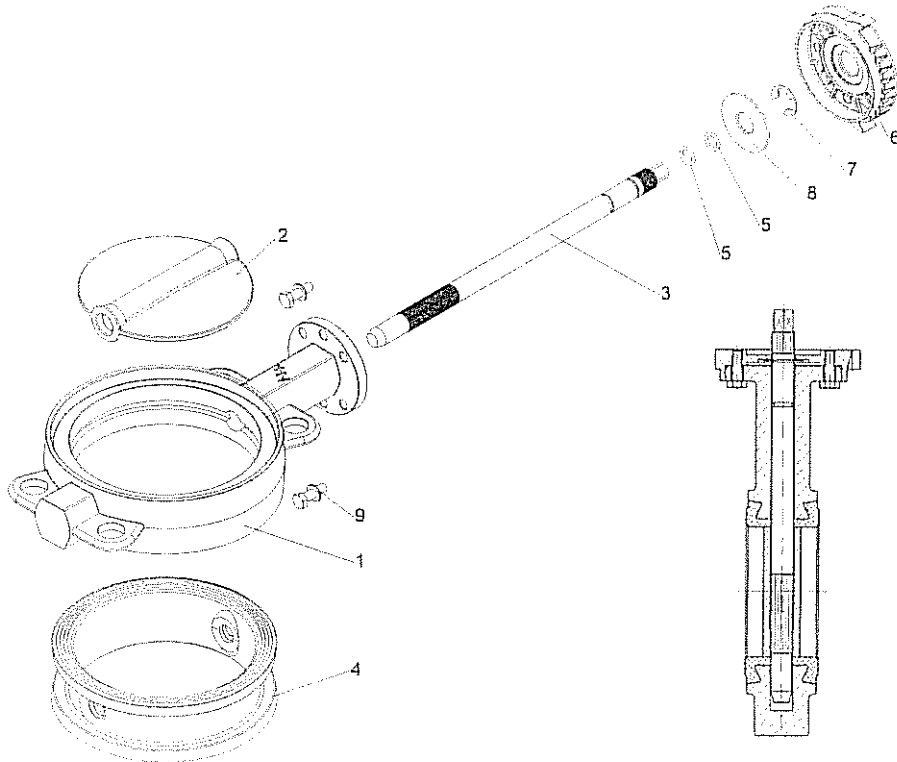
Using a screwdriver as a lever on the Circlip (Fig. 7) start taking the shaft off.

Take off the shaft completely and remove the disc (pos. 3 and 2).

Using the same screwdriver as a lever on the liner, and taking care not to damage the surface, push the liner to the inside until its final removal.

Replace the liner and O'Rings with new ones (pos. 4 and 5).

By hand, without using any screwdriver, reassemble the valve following inversely the above steps.

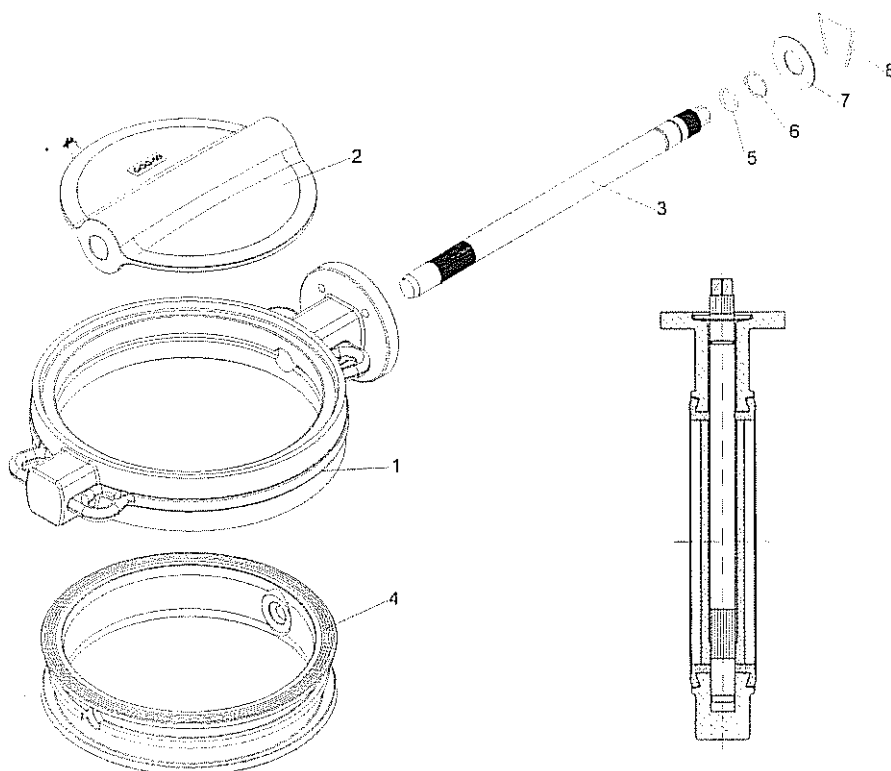


Recommended spare parts:

- Liner (pos. 4)
- O'Rings (pos 5)

## 6.2) Wafer, Lug and Flange Type Valves from DN 250 to DN 400.

Remove the actuator and take out the spring (pos. 8) and the Washer (pos. 7). Using a screwdriver as a lever on the Circlip (pos. 6) and proceed as described before.



Recommended spare parts:

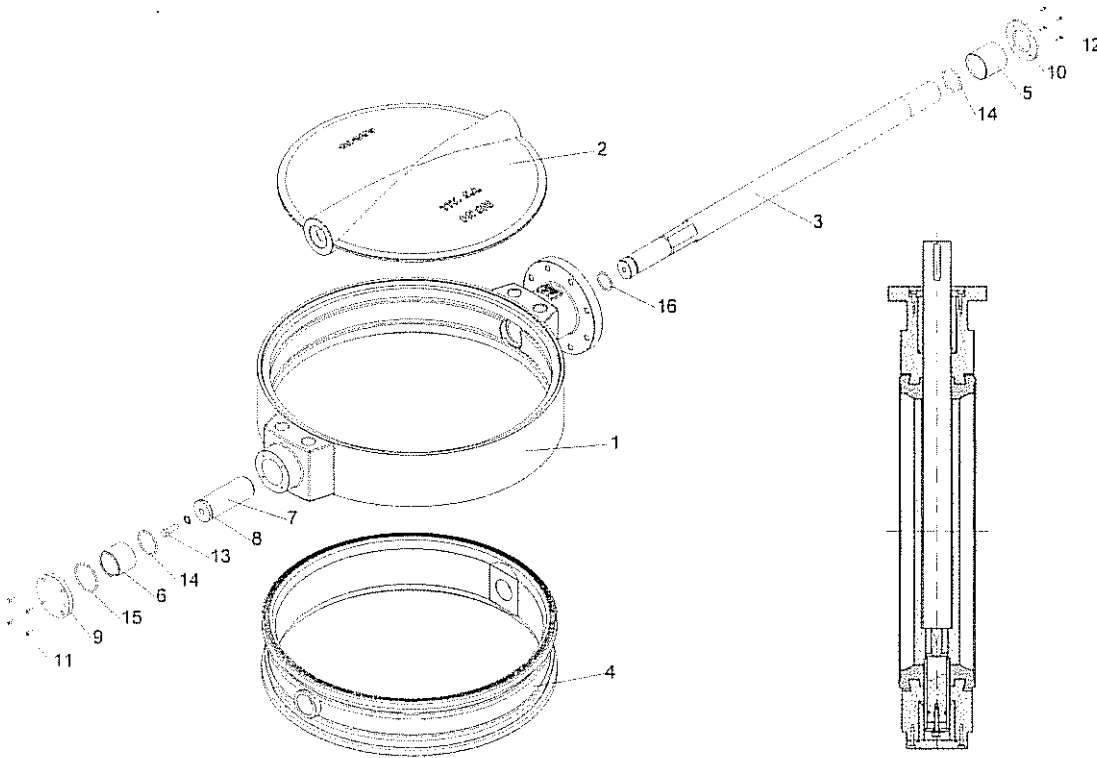
- Liner (pos. 4)
- O'Rings (pos. 5)

### 6.3) Wafer, Lug and Flange Type Valves from DN 450 to DN 1200.

Remove the actuator and take out the screws (pos. 12 and 11), removing the caps (pos. 9 and 10). Remove the screw (pos. 13).

Now the shaft is free and can be removed with an extractor, which will be placed in the threaded part of the shaft. Then the disc is removed and the liner is taken out.

For its installation, follow the opposite steps.



Warning: Due to the diameter, weight and installation complexity, this process should be done in *TTV*.

Recommended spare parts:

- Liner (pos 4)
- O'Rings (pos. 14, 15 and 16)

### 7) STORAGE INSTRUCTIONS

The aim of these specifications is the appropriate preservation and storage of *TTV* valves.

- Temperature

It would normally be no higher than 25°C

- Humidity

It should be avoided. There must not be condensations.

- Light

They have to be protected against sun light and ultraviolet rays.

- Oxygen and Ozone

Protected from air in circulation and against Ozone.



- Deformation

They must be stored avoiding any deformation.

- Contact with metals

The liners' parts should not be in contact with copper or manganese.

- Contact with liquids

They must be kept away from dissolvents, grease, oil, acid...

- Contact with dusty materials.

They must be free from talcum powder, ceramic products...

- Rotation of stored products

The older ones have to be used first.

- Cleaning

If it is necessary to clean the valves, do not use abrasive products, trichloroethylene, hydrocarbon,...