

## **PALLETS, PALLET TANKS & MAXIMOVERS**

This section offers a choice of materials handling equipment to deal with most sizes of operation. Choose plastic pallets - they are hygienic and will not splinter or rot. Mailbox pallet tanks are again specially moulded for the ease of cleaning and inherent hygiene.

They are resistant to most chemicals, lightweight, adaptable and practical for a number of operations. Maximovers are our own intermediate bulk containers, suitable for liquids and solids both hazardous and non-hazardous. Save time, effort and money by cutting out the need for re-handling, filling and loading.



62 Tel: 0161-330 5577 Fax: 0161-330 5576

## MAXIMOVER IBC'S Capacity 227 to 2000 litres

**Maximover**  
**Intermediate Bulk Containers (IBC's)**  
 For liquids and solids -  
 Hazardous and non hazardous.

**Maximover** IBC's are solving materials handling problems across industry and being FDA approved they are perfect for foods and pharmaceuticals. Also available are UN certified haz-chem units which conform to stringent international regulations and have been tested in accordance with the provisions of the United Nations Documentation on the transportation of Dangerous Goods Chapter 16, and may be used for liquids of packaging Group II & III up to a relative density of 2. These Maximovers also conform to ADR and RID road and rail regulations and IMDE regulations for transportation by sea. These quality IBC's are designed and manufactured to ISO 9001 certification. They're convenient, versatile, safe, secure and environment - and user - friendly and are available in a huge range of configurations and capacities from 227 litres to 2000 litres.

**Maximovers** have proved instrumental in helping streamline production lines, facilitating uncontaminated storage of raw materials and permitting safe, sealed transportation and delivery of the finished product without wasteful packaging.

**Maximovers** consist of a tough one-piece rotationally moulded polyethylene liner mounted in a rugged steel protective frame designed for easy handling by your existing crane or forklift. They are filled through a

convenient top lid and discharge is via a sloped base and bottom valve. The smooth interior of the liner has no hidden dirt traps, so cleaning is fast and simple.

**Maximovers** can be offered in bespoke form, this ranges from simple modifications to the basic Maximover specification to manufacturing complete **Maximovers** to your precise requirements in terms of volume size and shape.

IN SHORT **MAXIMOVERS** CAN TRANSFORM YOUR HANDLING AND STORAGE OPERATIONS - INCREASING OUTPUT WHILST REDUCING PRODUCTION COSTS AND TIMESCALES DRAMATICALLY.



PLEASE REQUEST YOUR COPY OF OUR MAXIMOVER IBC BROCHURE  
 email: [maxi@mailboxmouldings.co.uk](mailto:maxi@mailboxmouldings.co.uk)



Buy online @ [www.swift-shop.com](http://www.swift-shop.com)

**E249**

810 x 710 x 185mm

**R1000AL**

1200 x 1000 x 175mm

**R917AF**

1000 x 600 x 175mm



The R1000AL &amp; R800AL are available in 5 standard colours - Green, Red, Yellow, Blue &amp; Natural

**R800AF**

1200 x 800 x 160mm

**R1037**

1000 X 860 X 170mm

The R1000AL and the R800AL are available in Natural, Green, Red, Yellow &amp; Blue from stock. All our rotationally moulded pallets are available in special colours subject to a minimum quantity of 25.

Works with standard 70 litre fish box

## ROTATIONALLY MOULDED & RECYCLED PALLETS

### Rotationally Moulded Pallets

**E249** 2 way entry - 2 open.  
**Ext. Dim.** 810 x 710 x 185 mm  
**Load:** Static 500 Kgs Dynamic 250 Kgs **Racked -**  
**Material:** MDPE **Colours:** Grey **Weight:** 12 Kgs  
**Additional Details:** Lipped deck, all round smooth surface.

**R917AF** 4 way entry - 4 open.  
**Ext. Dim.** 1000 x 600 x 175 mm  
**Load:** Static 800 Kgs Dynamic 550 Kgs **Racked -**  
**Material:** MDPE **Colours:** Natural **Weight:** 9 Kgs  
**Additional Details:** All round smooth surface.

**\*R917 AL** 4 way entry - 4 open.  
**Ext. Dim.** 1000 x 600 x 185 mm  
**Load:** Static 800 Kgs Dynamic 550 Kgs **Racked -**  
**Material:** MDPE **Colours:** Natural **Weight:** 9 Kgs  
**Additional Details:** Lipped deck, all round smooth surface.

**R800AF** 4 way entry - 4 open.  
**Ext. Dim.** 1200 x 800 x 160 mm  
**Load:** Static 1000 Kgs Dynamic 1000 Kgs **Racked -**  
**Material:** MDPE **Colours:** Natural **Weight:** 17 Kgs  
**Additional Details:** All round smooth surface.


**\*R800AL** 4 way entry - 4 open.  
**Ext. Dim.** 1200 x 800 x 175 mm  
**Load:** Static 1000 Kgs Dynamic 1000 Kgs **Racked -**  
**Material:** MDPE **Colours:** Natural, Green, Red, Blue & Yellow **Weight:** 17 Kgs  
**Additional Details:** Lipped deck, all round smooth surface.

**\*R1000AF** 4 way entry - 4 open.  
**Ext. Dim.** 1200 x 1000 x 160 mm  
**Load:** Static 1000 Kgs Dynamic 1000 Kgs **Racked -**  
**Material:** MDPE **Colours:** Natural **Weight:** 20 Kgs  
**Additional Details:** All round smooth surface.

**R1000AL** 4 way entry - 4 open.  
**Ext. Dim.** 1200 x 1000 x 175 mm  
**Load:** Static 1000 Kgs Dynamic 1000 Kgs **Racked -**  
**Material:** MDPE **Colours:** Natural, Green, Red, Blue & Yellow **Weight:** 20 Kgs  
**Additional Details:** Lipped deck, all round smooth surface.

**R1037** 4 way entry - 4 open.  
**Ext. Dim.** 1000 x 860 x 170mm  
**Load:** Static 1000 Kgs Dynamic 1000 Kgs **Racked -**  
**Material:** MDPE **Colours:** Blue **Weight:** 13.0 Kgs  
**Additional Details:** All round smooth surface, lipped deck, Holds two 70 litre standard fish boxes. Hand holes and drainage holes in top surface.

### Recycled Pallets

**C6R** 4 way entry - 4 open.   
**Ext. Dim.** 600 x 400 x 145mm  
**Load:** Static 1000 Kgs Dynamic 250 Kgs **Racked -**  
**Material:** HDPE **Colours:** Black **Weight:** 2.5 Kgs  
**Additional Details:** Ventilated deck, ribbed underside, nestable pallet.

**C7R** 4 way entry - 4 open.  
**Ext. Dim.** 800 x 600 x 155mm  
**Load:** Static 2400 Kgs Dynamic 600 Kgs **Racked -**  
**Material:** HDPE **Colours:** Black **Weight:** 6.5 Kgs  
**Additional Details:** Ventilated deck, ribbed underside, nestable pallet.

**M82** 4 way entry - 4 open.  
**Ext. Dim.** 1200 x 800 x 130mm  
**Load:** Static 1000 Kgs Dynamic 500 Kgs **Weight:** 5.3 Kgs  
**Material:** HDPE **Colours:** Black **Weight:** 7 Kgs  
**Additional Details:** Ventilated deck. Lightweight nestable pallet, pimpled and anti slip deck.

**C1208B** 4 way entry - 2 open 2 boxed.  
**Ext. Dim.** 1200 x 800 x 165mm  
**Load:** Static 2500 Kgs Dynamic 1000 Kgs **Racked** 250 Kgs  
**Material:** PP **Colours:** Black **Weight:** 7 Kgs  
**Additional Details:** Ventilated lipped deck, ribbed underside.

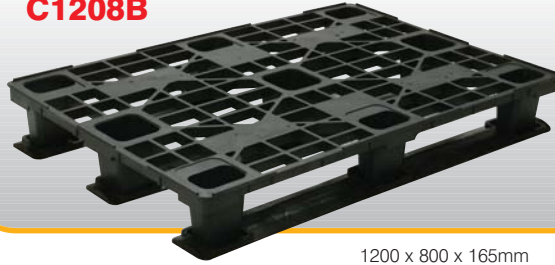
**C1RL\*** 4 way entry - 2 open 2 boxed.  
**Ext. Dim.** 1200 x 800 x 157mm  
**Load:** Static 6000 Kgs Dynamic 1250 Kgs **Racked** 850 Kgs  
**Material:** HDPE **Colours:** Black **Weight:** 16 Kgs  
**Additional Details:** Lipped and ventilated deck, ribbed underside.

**C1210** 4 way entry - 4 open.  
**Ext. Dim.** 1200 x 1000 x 155mm  
**Load:** Static 2500 Kgs Dynamic 1000 Kgs **Racked -**  
**Material:** PP **Colours:** Black **Weight:** 6.5 Kgs  
**Additional Details:** Ventilated lipped deck, ribbed underside, nestable Pallet.

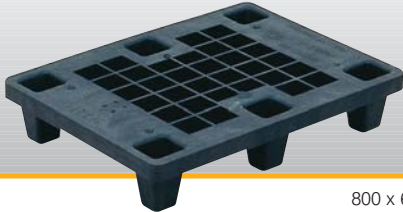
\* not shown

**C6R**

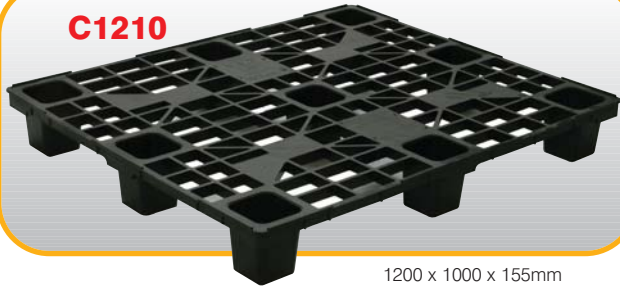
600 x 400 x 145mm

**C1208B**

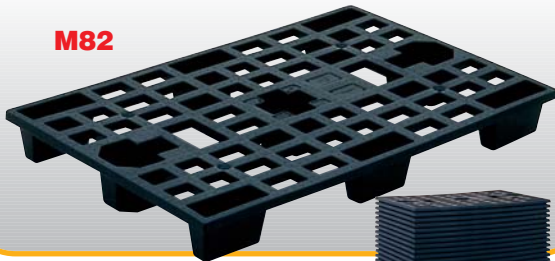
1200 x 800 x 165mm

**C7R**

800 x 600 x 155mm

**C1210**

1200 x 1000 x 155mm

**M82**

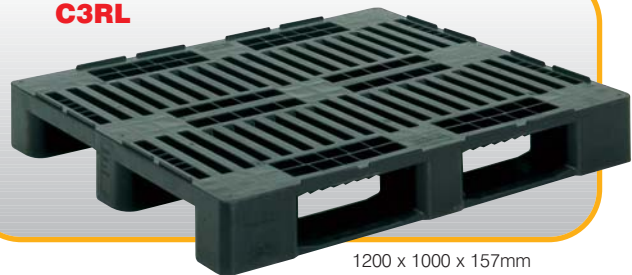
1200 x 800 x 130mm



M82 pallet nested

**C1210B**

1200 x 1000 x 165mm

**C3RL**

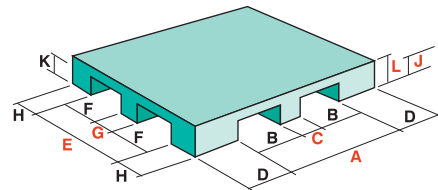
1200 x 1000 x 157mm

**C1210B** 4 way entry - 2 open 2 boxed.  
**Ext. Dim.** 1200 x 1000 x 165mm  
**Load:** Static 2500 Kgs Dynamic 1000 Kgs Racked 250 Kgs  
**Material:** PP Colours: Black Weight: 8.3 Kgs  
**Additional Details:** Ventilated lipped deck, ribbed underside.

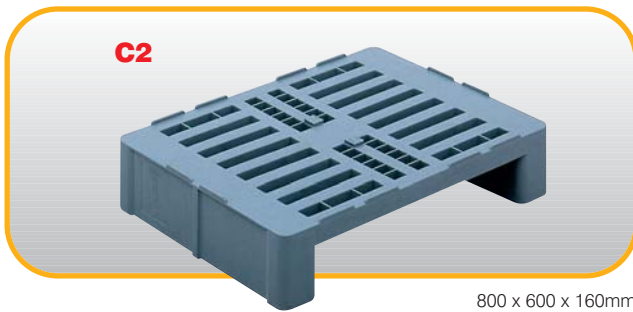
**C3RL** 4 way entry - 2 open 2 boxed.  
**Ext. Dim.** 1200 x 1000 x 157mm  
**Load:** Static 6000 Kgs Dynamic 1250 Kgs Racked 850 Kgs  
**Material:** HDPE Colours: Black Weight: 16.0 Kgs  
**Additional Details:** Lipped and ventilated deck, ribbed underside.

**Dynamic and Racking Load Rating**

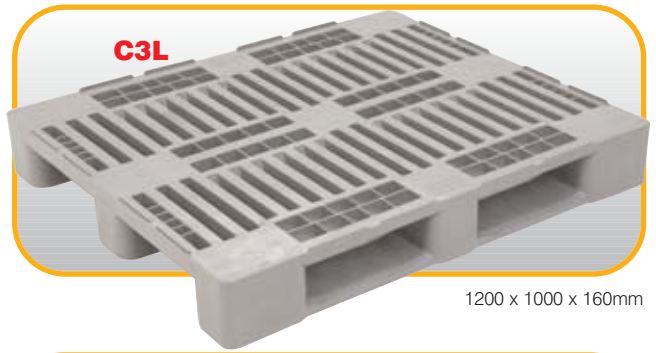
Dynamic and racking loading can vary and is dependant upon the even distribution and type of weight across the surface area of the pallet and height of load combined with correct setting of forks and racking. Load ratings for individual applications should be obtained.



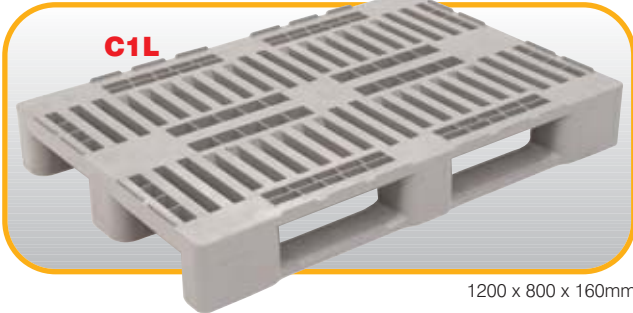
MODEL	A	B	C	D	E	F	G	H	J	K	L
<b>ROTATIONALLY MOULDED PALLETS</b>											
E249	-	-	810	-	545	210	130	60	-	130	185
R917AF	600	195	210	200	200	-	-	200	125	125	175
R917AL	600	195	210	200	200	-	-	200	125	125	185
R800AF	930	395	140	140	610	235	140	100	100	100	160
R800AL	930	395	140	140	610	235	140	100	100	100	175
R1000AF	930	395	140	140	730	295	140	140	100	100	160
R1000AL	930	395	140	140	730	295	140	140	100	100	175
R1037	650	215	225	155	590	230	125	125	50	115	170
<b>RECYCLED PALLETS</b>											
C6R	-	355/120	-	55/70	170	-	-	115	115	115	145
C7R	570	235	85	115	365	-	-	120	110	110	155
M82	760	290	180	220	600	220	160	100	105	105	130
C1208B	910	395	120	120	590	230	120	75	106	125	165
C1210	905	390	120	120	705	290	120	120	125	125	155
C1210B	905	390	120	120	705	290	120	120	106	125	165
C1RL	780	315	150	210	600	225	150	100	100	100	157
C3RL	780	315	150	210	710	280	150	145	100	100	157



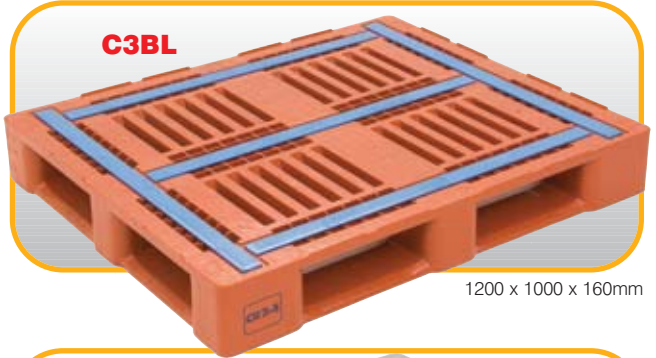
800 x 600 x 160mm



1200 x 1000 x 160mm



1200 x 800 x 160mm



1200 x 1000 x 160mm



1200 x 1000 x 150mm



1200 x 1000 x 160mm

## HEAVY DUTY PALLETS

**C2** 2 way entry.  
**Ext. Dim.** 800 x 600 x 160 mm  
**Load:** Static 1000 Kgs Dynamic 500 Kgs **Racked -**  
**Material:** HDPE **Colours:** Grey **Weight:** 9 Kgs  
**Additional Details:** Ventilated lipped deck, ribbed underside, positioning lugs on centre of deck.

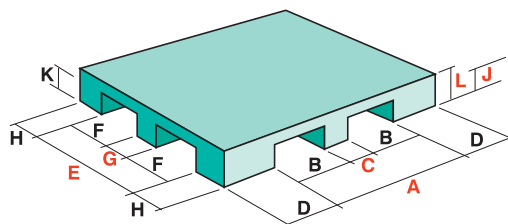
**C1L** 4 way entry - 2 open 2 boxed.  
**Ext. Dim.** 1200 x 800 x 160 mm  
**Load:** Static 5000 Kgs Dynamic 1250 Kgs **Racked** 1000 Kgs  
**Material:** HDPE **Colours:** Light Grey **Weight:** 18.0 Kgs  
**Additional Details:** Lipped and ventilated deck, ribbed underside.

**C3LL** 4 way entry - 4 boxed.  
**Ext. Dim.** 1200 x 1000 x 150 mm  
**Load:** Static 4000 Kgs Dynamic 1000 Kgs **Racked** 4-500 Kgs  
**Material:** HDPE **Colours:** Red/Brown **Weight:** 15.0 Kgs  
**Additional Details:** Lipped and ventilated deck, ribbed underside.

**C3L** 4 way entry - 2 open 2 boxed.  
**Ext. Dim.** 1200 x 1000 x 160 mm  
**Load:** Static 5000 Kgs Dynamic 1250 Kgs **Racked** 850 Kgs  
**Material:** HDPE **Colours:** Light Grey **Weight:** 22.0 Kgs  
**Additional Details:** Lipped and ventilated deck, ribbed underside.

**C3BL** 4 way entry - 4 boxed.  
**Ext. Dim.** 1200 x 1000 x 160 mm  
**Load:** Static 5000 Kgs Dynamic 1250 Kgs **Racked** 1000 Kgs  
**Material:** HDPE **Colours:** Red/Brown **Weight:** 23.0 Kgs  
**Additional Details:** Lipped and ventilated deck, ribbed underside, anti-slip surface

**C3SBL** 4 way entry - 4 boxed.  
**Ext. Dim.** 1200 x 1000 x 160 mm  
**Load:** Static 6000 Kgs Dynamic 1500 Kgs **Racked** 1250 Kgs  
**Material:** HDPE **Colours:** Grey **Weight:** 23.0 Kgs  
**Additional Details:** All round smooth deck.



MODEL	A	B	C	D	E	F	G	H	J	K	L
C2	600	-	-	100	-	-	-	-	100	-	160
C1L	780	315	150	210	600	225	150	100	100	100	160
C3LL	780	315	150	210	710	280	150	145	100	100	150
C3L	780	315	150	210	710	280	150	145	100	100	160
C3BL	760	305	150	220	710	280	150	145	100	100	160
C3SBL	760	305	150	220	710	280	150	145	100	100	160

### Dynamic and Racking Load Rating

Dynamic and racking loading can vary and is dependant upon the even distribution and type of weight across the surface area of the pallet and height of load combined with correct setting of forks and racking. Load ratings for individual applications should be obtained.



**C8118** 1200 x 800 x 580mm



**D1210B** 1200 x 1000 x 740mm  
**D1208B\*** 1200 x 800 x 740mm



**U5403** 1200 x 800 x 760mm  
with hinged door.



**R338** 925 x 925 x 1100mm

## PALLET TANKS Capacity 300 to 600 Litres

**C8118** 4 way entry - 4 open.  
**Ext. Dim.** 1200 x 800 x 580 mm **Int Dim.** 980 x 640 x 440 mm  
**Capacity:** 300 litres **Material:** HDPE **Weight:** 18.0 Kgs  
**Colour:** Natural or Grey **Lid Ref:** C8119 Drop on  
Stacking lid, Natural or Grey, 5.6 Kgs  
**Additional Details:** 5 feet stack/hest container.

**D1208A\*** 4 way entry - 2 boxed 2 open.  
**Ext. Dim.** 1200 x 800 x 740 mm **Int Dim.** 1120 x 720 x 600 mm  
**Capacity:** 500 litres **Material:** HDPE **Weight:** 32 Kgs  
**Colour:** Blue or Yellow **Lid Ref:** D8208 Drop on  
Stacking lid, Blue or Yellow, 5.6 Kgs  
**Additional Details:** Solid sides and base.

**D1208B\*** As D1208A above except for  
**Additional Details:** Perforated sides and base.

**U5403** 4 way entry - 4 open.  
**Ext. Dim.** 1200 x 800 x 760 mm **Int Dim.** 1110 x 710 x 610 mm  
**Capacity:** 535 litres **Material:** HDPE **Weight:** 33.0 Kgs  
**Colour:** Grey **Lid Ref:** U1409 Drop on  
stacking lid, Grey, HDPE, 6.5 Kgs.  
**Additional Details:** Hinged door on one long side.

**R338** 4 way entry - 2 boxed 2 open.  
**Ext. Dim.** 925 x 925 x 1100 mm **Int Dim.** 820 x 820 x 925 mm  
**Capacity:** 586 litres **Material:** MDPE **Weight:** 68.7 Kgs  
**Colour:** Natural or Blue **Lid Ref:** -  
**Additional Details:** Twin skinned smooth interior

**D1210A** 4 way entry - 2 boxed, 2 open.  
**Ext. Dim.** 1200 x 1000 x 740 mm **Int Dim.** 1120 x 920 x 600 mm  
**Capacity:** 600 litres **Material:** HDPE **Weight:** 37 Kgs  
**Colour:** Blue or Yellow **Lid Ref:** D8210 Drop on  
Stacking lid, Blue or Yellow, 5.6 Kgs  
**Additional Details:** Solid sides and base.

**D1210B** As D1210A above except for  
**Additional Details:** Perforated sides and base.

**R1072** 4 way entry - 4 open  
**Ext. Dim.** 1200 x 800 x 920 mm **Int Dim.** 1020 x 620 x 790 mm  
**Capacity:** 600 litres **Material:** MDPE **Weight:** 28 Kgs  
**Colour:** Natural **Lid Ref:** R1073 Drop on  
stacking lid, Natural, MDPE 10 Kgs  
**Additional Details:** 9 hollow feet.

\* not shown



**D1210A** 1200 x 1000 x 740mm  
**D1208A\*** 1200 x 800 x 740mm



**R1072** 1200 x 800 x 920mm



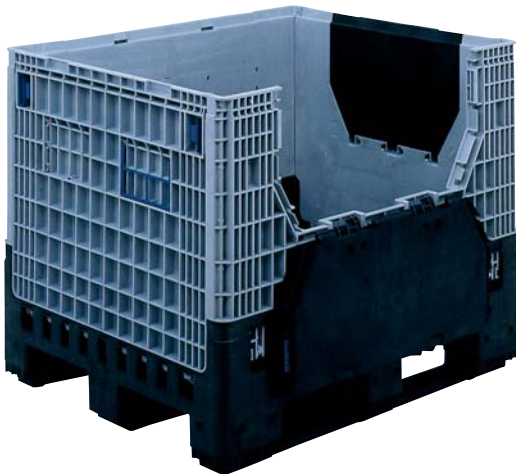
**U4401A**

1200 x 1000 x 790mm



**U4401B**

1200 x 1000 x 790mm



**U2320**

1200 x 1000 x 975mm



**E2**

1290 x 1030 x 860mm

## PALLET TANKS Capacity 670 to 1400 Litres

**U4401A** 4 way entry - 2 boxed 2 open.  
**Ext. Dim.** 1200 x 1000 x 790 mm **Int Dim:** 1110 x 910 x 610 mm  
**Capacity:** 670 litres **Material:** HDPE **Weight:** 46.5 Kgs  
**Colour:** Grey **Lid Ref:** U1410 Drop on  
 stacking lid Grey, HDPE 8.0 Kgs  
**Additional Details:** 3 runners

**U4401B** 4 way entry - 2 boxed 2 open.  
**Ext. Dim.** 1200 x 1000 x 790 mm **Int Dim:** 1110 x 910 x 610 mm  
**Capacity:** 670 litres **Material:** HDPE **Weight:** 45.5 Kgs  
**Colour:** Grey **Lid Ref:** U1410 Drop on  
 stacking lid Grey, HDPE 8.0 Kgs  
**Additional Details:** 3 runners, 45 x 5mm perforations in all four walls and base.

**R176**  
**Ext. Dim.** 1195 x 925 x 920 mm **Int Dim:** 995 x 730 x 910 mm  
**Capacity:** 650 litres **Material:** MDPE **Weight:** 43.0 Kgs  
**Colour:** Natural **Lid Ref:** R176A Drop on  
 stacking lid, Natural, MDPE, 7.5 Kgs  
**Additional Details:** Nesting container.

**U5401** 4 way entry - 4 open.  
**Ext. Dim.** 1200 x 1000 x 760 mm **Int Dim:** 1110 x 910 x 610mm  
**Capacity:** 670 litres **Material:** HDPE **Weight:** 38.0 Kgs  
**Colour:** Grey **Lid Ref:** U1410 Drop on  
 stacking lid, Grey, HDPE 8.0 Kgs  
**Additional Details:** Hinged door on one long side.

**U2320** 4 way entry - 2 open 2 boxed  
**Ext. Dim.** 1200 x 1000 x 975 mm **Int. dim.** 1110 x 910 x 760 mm  
**Capacity:** 780 litres **Material:** HDPE **Weight:** 63.0 Kgs  
**Colour:** Grey/Black **Lid ref:** U2326 Drop on  
 stacking lid, HDPE, Black, 5.3 Kgs  
**Additional Details:** Collapsible container with door 770 x 385mm in one long wall and 570 x 385mm in one short wall, 40 x 15mm slots in base

**E2** 4 way entry - 4 open.  
**Ext. Dim.** 1290 x 1030 x 860 mm **Int Dim:** 1140 x 900 x 860 mm  
**Capacity:** 795 litres **Material:** MDPE **Weight:** 40 Kgs  
**Colour:** Natural **Lid Ref:** E8002 Drop on  
 stacking lid, Natural, MDPE, 12 Kgs  
**Additional Details:** 9 (hollow) feet nesting container.

**R279** 4 way entry - 4 open  
**Ext. Dim.** 1200 x 1000 x 1000mm **Int Dim:** 1040 x 850 x 875 mm  
**Capacity:** 845 litres **Material:** MDPE **Weight:** 47 Kgs  
**Colour:** Natural **Lid Ref:** R8314 Drop on  
 stacking lid, Natural, MDPE 8.6 Kgs  
**Additional Details:** 9 hollow feet.

**R605** 2 way entry  
**Ext. Dim.** 1110 x 940 x 990 mm **Int. dim.** 940 x 740 x 875 mm  
**Capacity:** 850 litres **Material:** MDPE **Weight:** 34.5 Kgs  
**Colour:** Natural or Green **Lid ref:** Complete  
 with drop on stacking lid, Natural or Green, MDPE, 12.3 Kgs  
**Additional Details:** Nesting container

**R314** 4 way entry - 4 open  
**Ext. Dim.** 1200 x 1000 x 1325 mm **Int. dim.** 1035 x 835 x 1170 mm  
**Capacity:** 1000 litres **Material:** MDPE **Weight:** 75.0 Kgs  
**Colour:** Natural **Lid ref:** R8314 Drop on  
 stacking lid, Natural, HDPE, 8.6 Kgs  
**Additional Details:** 9 feet, twin skinned smooth interior

**C1400** 4 way entry - 2 open 2 boxed  
**Ext. Dim.** 1300 x 1150 x 1250 mm **Int. dim.** 1150 x 990 x 1090 mm  
**Capacity:** 1400 litres **Material:** HDPE **Weight:** 75.0 Kgs  
**Colour:** Blue **Lid ref:** C1401 Drop on  
 stacking lid, Grey, HDPE, 19.5 Kgs.  
**Additional Details:** 3 runners, card holder on one long wall.

Model No. **U4401A** is available with 4 swivel 125mm heavy duty castors as an optional extra. The fork guide runner is removed as shown.





**R176**

1195 x 925 x 920mm



**U5401**

1200 1000 x 760mm



**R279**

1200 x 1000 x 1000mm



**R605**

1110 x 940 x 990mm



**R314**

1200 x 1000 x 1325mm



**C1400**

1300 x 1150 x 1250mm

Below - **U2320**  
collapsed with **U2326** lid



Insert - **U2320** has 40 x 15mm  
drainage slots in the base

