

IN CASE OF FIRE
COVER - BREAK GLASS



**Safety Technology
International**

PRESS TO E



Product Catalogue

www.sti-emea.com

CONTENTS

FIRE & SAFETY	Call Point Protectors	4
	Alarms & Sirens	6
VANDALISM & THEFT	ReSettable Call Points	8
	StopperSwitches®	10
CALL POINTS & SWITCHES	Stopper®Stations	12
	Environmental Enclosures	14
COVERS & CAGES	NEW EnviroArmour® Enclosures	16
	Biometric, Keypad & Thermostat Covers	18
	Steel Web Stoppers®	20

ABOUT STI

It all started with a solution to a challenge

Who We Are

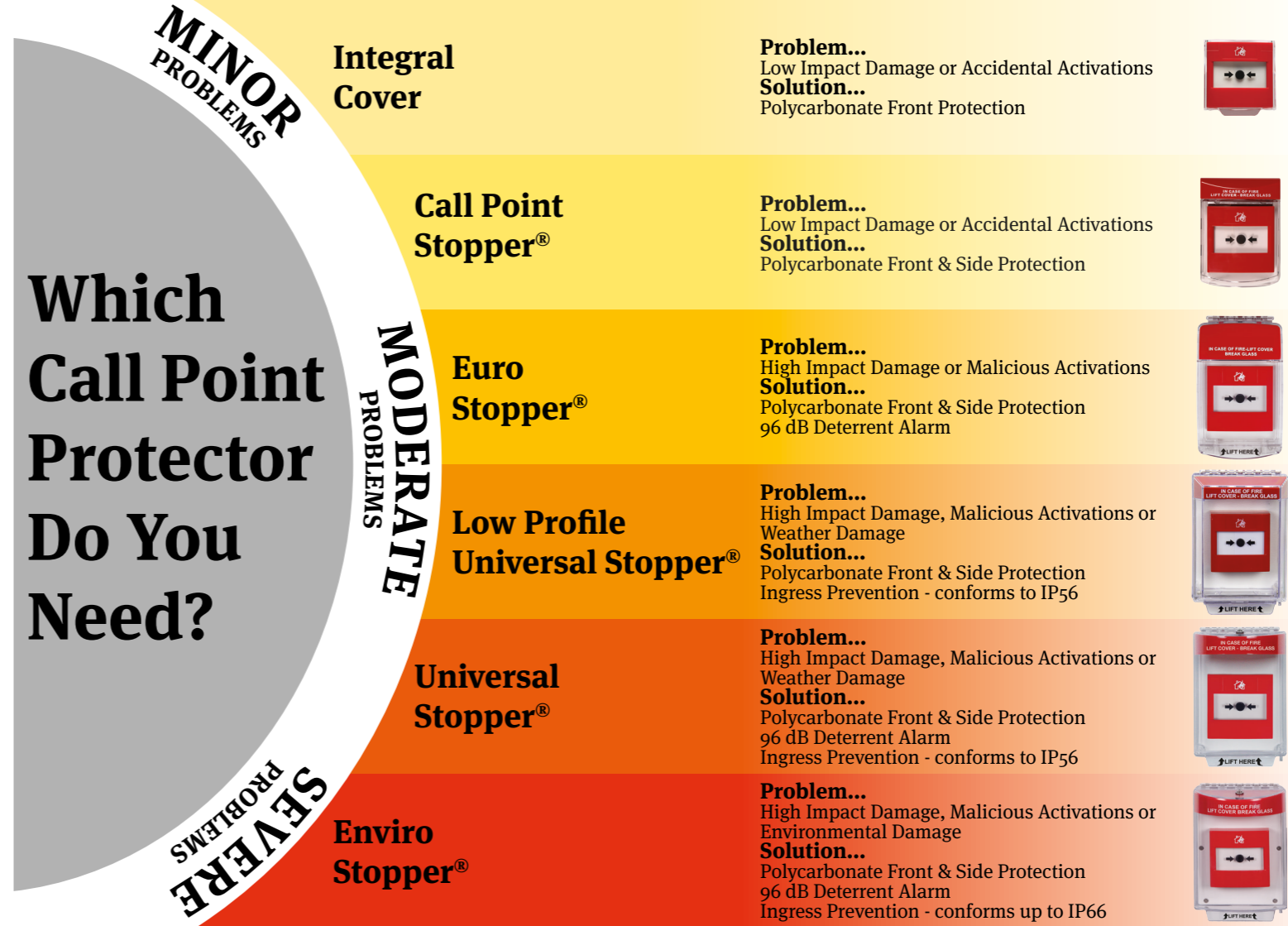
Family owned and operated for over 40 years, we take great pride in our products and exemplary service. Our entire team works just as hard to make you a satisfied customer as we do to make the world a safer place, one product at a time.

What We Do

STI manufactures; protective polycarbonate covers, enclosures, call points, push buttons, heavy-duty cages and wireless alarms to help prevent theft and vandalism to important fire and safety devices. Covers and cages protect; smoke detectors, lights, manual call points, and much more. Alarms protect; fire extinguishers, exit doors, etc. Many variations of products are available to protect the things that protect you.

Where We Came From

The STI story begins four decades ago with a challenge made by a suburban Detroit school administrator who wanted to stop false fire alarms. Our Founder, Jack Taylor, used his expertise in security systems to invent the original Stopper® pull station protector. Today, STI has hundreds of innovative products that help make homes, businesses and workplaces around the world safe, smart and secure.



ONLINE
www.sti-emea.com

HOW TO ORDER
sales@sti-emea.com

CUSTOMER SERVICE
+44 (0)1527 520 999

STAY CONNECTED

UV-stabilised polycarbonate Call Point Covers protect a wide range of call points and electrical switches, without restricting legitimate operation. All covers are available in a variety of colours for various applications.

VISIT THE WEBSITE TO VIEW ALL PRODUCT VARIANTS

Three year guarantee against breakage of polycarbonate in normal use (one year on electro-mechanical and electronic components).

FIRE & SAFETY

Call Point Protectors

BS 5839-1:2017 compliant

DESIGN

Protective covers with optional integral sounder, prevent false fire alarms, without hindering legitimate operation of a manual call point in the event of an emergency. Colours available are:



INSTALLATION

Quick and easy to install, providing protection in minutes. A simple 4 fixing installation can retrofit over existing device. All models can accommodate flush or surface mount applications.

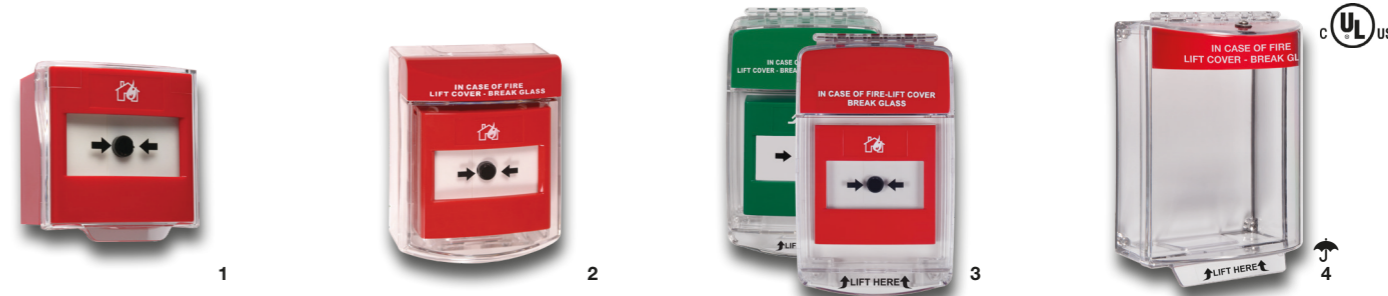


ELECTRONICS

Many models available with or without a 96 dB integral sounder, powered by a battery. The sounder draws immediate attention to the area.

CONSTRUCTION

Tough, clear UV-stabilised polycarbonate housing can withstand the severest of knocks preventing any vandalism or accidental damage to the manual call point or emergency button.



1. Integral Cover

Low impact protective cover specifically designed for use with STI call points and push buttons. EN54-11 approved.

STI-CI - Integral Cover

2. Call Point Stopper®

Protective hinged cover prevents misuse and accidental damage to a wide range of electrical switches and call points.

STI-6930 - Flush
STI-6931 - Surface

3. Euro Stopper® Multi Kit

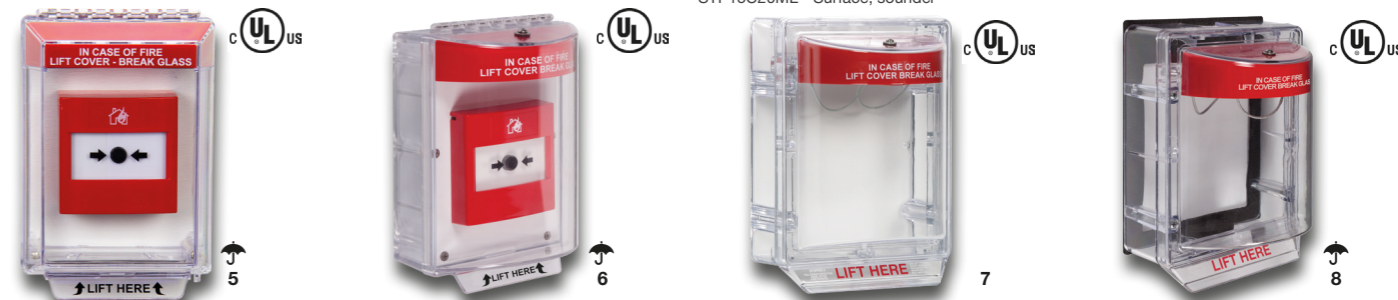
Indoor protective cover, supplied in kit form for self assembly. Red and green housing shells provided.

STI-15010ML - Flush
STI-15020ML - Flush, sounder
STI-15C10ML - Surface
STI-15C20ML - Surface, sounder

4. Universal Stopper®

IP56 Domed Protective Cover.

STI-13010FR - Flush, fire label
STI-13020FR - Flush, fire label, sounder
STI-13110FR - Surface, fire label
STI-13120FR - Surface, fire label, sounder



5. Low Profile Universal Stopper®

IP56 Low Profile Protective Cover.

STI-14010FR - Flush, fire label
STI-14110FR - Surface, fire label

6. Enviro Stopper®

IP56/66 Domed Protective Cover.

STI-13610FR - Sealed mounting plate, IP66
STI-13620FR - Sealed mounting plate, sounder, IP66
STI-13710FR - Open mounting plate, IP56
STI-13720FR - Open mounting plate, sounder, IP56

7. Stopper II®

Larger domed cover with a wire suspended mechanism.

STI-1100 - Flush, sounder
STI-1130 - Surface, sounder
STI-1200 - Flush
STI-1230 - Surface

8. Weather Stopper II®

IP54 larger weatherproof domed cover with a wire suspended mechanism.

STI-1250 - Flush
STI-3150 - Surface

VANDALISM & THEFT

Alarms & Sirens

Wireless models available on selected products

The Exit Stopper is a unique and highly effective way to alert you to any unauthorised exits or entries through emergency exit doors. If the protected door is opened, the Exit Stopper emits a powerful 95/105 dB warning alarm and visual flashing beacon.

DESIGN

Unique and highly effective way to alert you to any unauthorised exits or entries through emergency exit doors. It can also serve as an inexpensive security device and help prevent theft. Comes with optional Multi Lingual Warning Instruction Label sheet in 21 languages.

INSTALLATION

Highly versatile, can be mounted or installed on to any type of door, including remote placement of sounder and double door installation.



ELECTRONICS

The new beacon feature provides a visual indication when the unit is 'on' and flashes when activated. It works alongside the warning alarm, powered by a 9V PP3 battery. The unit is fitted with a low battery warning. There are a number of user programmable features to suit application needs. 12-24 connection or wireless option is available.

CONSTRUCTION

Virtually indestructible UV-stabilised polycarbonate housing.

VISIT THE WEBSITE TO VIEW ALL PRODUCT VARIANTS

Three year guarantee against breakage of polycarbonate in normal use (one year on electro-mechanical and electronic components).



1

1. Exit Stopper®

Door alarm alerts to unauthorised use of exit doors. Wireless models available.

STI-6400 - Red, single door
STI-6400WIR - Red, single door, wireless alert
STI-6402 - Red, double door
STI-6400-G - Green, single door



2

2. Theft Stopper®

Alarm unit to prevent theft, vandalism and misuse of fire extinguishers and other life safety devices. Wireless models available.

STI-6200 - Theft Stopper
STI-6200WIR - Wireless alert
STI-V6200WIR4 - Wireless model with 4-Channel Voice Receiver
STI-6200WIR8 - Wireless model with 8-Channel Receiver

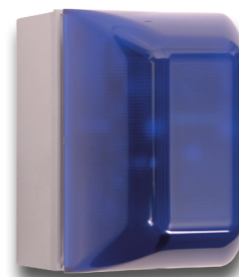


3

3. Sirens & Strobes

Highly effective visual and audible signalling device with 8 flash patterns and speed selection. Multiple colours available.

STI-SA5500-R - Red, round model, conforms up to IP66
STI-SA5600-R - Red, rectangle model



4

4. Select-Alert

Alarm unit, alerting visually or audibly to unauthorised use of important electronic devices. Multiple colours available. 32 selectable sounds.

STI-SA5000-R - Red, Select-Alert Alarm Mini Controller
STI-SA5000-B - Blue, Select-Alert Alarm Mini Controller



5

5. Mini Theft Stopper®

Protects freestanding or cabinet housed fire extinguishers and other equipment.

STI-6255 - Single Protection
STI-6255-M2 - Double Protection



6

6. Universal Alert Sensor

Alerts when monitored site is tripped. Suitable for a variety of applications. Works in conjunction with STI wireless receivers.

STI-34401 - Universal Alert Sensor
STI-V34500 - Universal Alert Sensor with 4-Channel Voice Receiver
STI-34108 - 8-Channel Receiver

The ReSet Call Points mimic the feel of breaking glass whilst offering the benefits and environmental advantages of a resettable operating element. Suitable for areas that are at high risk of false activations or sensitive to broken glass.

VISIT THE WEBSITE TO VIEW ALL PRODUCT VARIANTS

Three year guarantee against breakage of polycarbonate in normal use (one year on electro-mechanical and electronic components).

CALL POINTS & SWITCHES

ReSettable Call Points

Ask us about our Addressable Solutions



ELECTRONICS

Single Pole Changeover, Double Pole Changeover, Conventional Fire model (470 680Ω) or Sav-Wire 2 Wire Systems.

DESIGN

An indicator drops into view at the top of the window on activation. The unit is then simply reset with a key and is ready for use. A range of colours available.

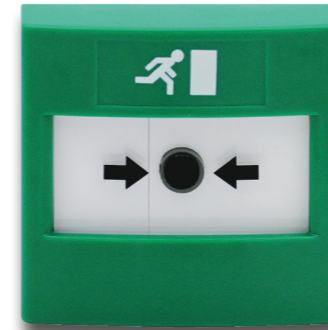


CONSTRUCTION

Attractive, high value look and feel. Glass appearance maintains operator deterrence.

INSTALLATION

Easy installation due to no glass elements that could be broken or incorrectly fitted. Integral cover and other cover options available.



1. Indoor ReSet Call Point

Unique manual call point that simulates break glass activation. Red models are EN54-11 approved.
 RP-RD2-01 - Red, dual mount, EN54-11
 RP-RS2-01 - Red, surface mount, EN54-11
 RP-RF2-01 - Red, flush mount, EN54-11
 RP-GD2-11 - Green, dual mount, double pole
 RP-YS2-02 - Yellow, surface mount, single pole

2. Global ReSet Call Point

Resettable call point suitable for worldwide installation. All models are UL Listed.
 GR-RF-01-0 - Red, flush mount
 GR-RS-01-0 - Red, surface mount
 GLR101RM-EN - Green, flush mount
 GLR121RM-EN - Green, flush mount, shield
 GLR3A1AB-EN - White, flush mount, shield with sounder, ABORT text

3. Weatherproof ReSet Call Point

Suitable for indoor and outdoor use, harsh environments and areas that are sensitive to broken glass. IP67 certified.
 WRP2-R-01 - Red, convention fire model
 WRP2-G-11 - Green, double pole
 WRP2-W-02 - White, single pole
 WRP2-B-02 - Blue, single pole

CALL POINTS & SWITCHES

StopperSwitches

The StopperSwitches are a highly versatile range of attractive indoor and outdoor Push Buttons and indoor Key Switches combining unique design, quality and value. They are aesthetically appealing, low/high voltage switches, which fit any standard UK-type switch socket box.

VISIT THE WEBSITE TO VIEW ALL PRODUCT VARIANTS

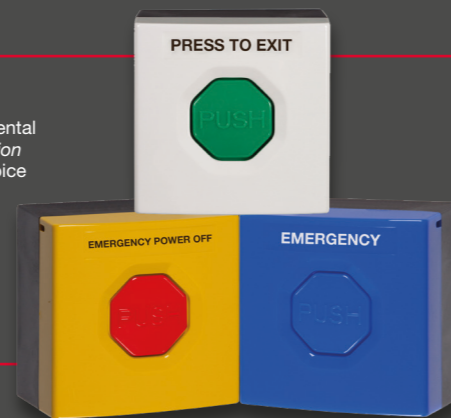
Three year guarantee against breakage of polycarbonate in normal use (one year on electro-mechanical and electronic components).

DESIGN

Inset design on the push button helps prevent accidental activations. *Standard function marking* label sheets or choice of custom label.

INSTALLATION

Quick and easy installation. All models are supplied as Dual Mount (35mm black back box and flush mounting plate) to allow the user the choice of flush or surface installation.

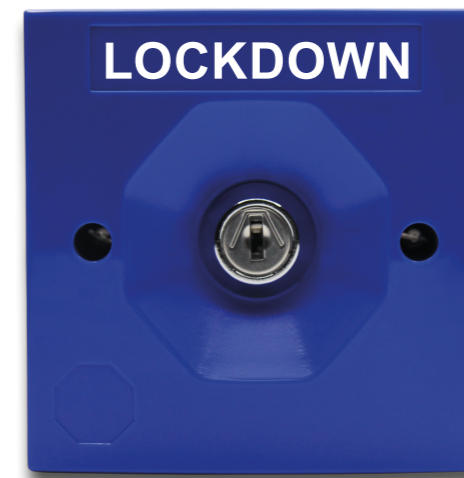


ELECTRONICS

Low profile, heavy-duty terminations. Wide range of operating voltages up to 250 volts. Key-to-Reset, Momentary and Pneumatic models available.

CONSTRUCTION

Moulded in tough UV-stabilised polycarbonate. Space available for function marking or operating instructions.



1. Indoor Push Buttons

Latching (key-to-reset), momentary and pneumatic models with a variety of colour options.
 SS3-7G14 - Momentary, white with green button
 SS3-1R04 - Latching, red with red button
 SS3-5Y60 - Pneumatic, yellow with yellow button

2. Indoor Key Switches

Low/high voltage switches fit any standard UK-type switch socket with a variety of colour options. Ideal for units where casual activation is discouraged.
 SS3-3041 - 2 position key switch, double pole, green
 SS3-1020 - 2 position key switch, single pole, red
 SS3-7053 - 3 position key switch, white

3. Weatherproof Push Buttons

Latching (key-to-reset) and momentary models with a variety of colour options, designed for use within harsh environments. IP67 certified.
 WSS3-5R04 - Latching, yellow with red button
 WSS3-3W14 - Momentary, green with white button
 WSS3-7B04 - Latching, white with blue button

CALL POINTS & SWITCHES



Stopper® Stations

UL listed multipurpose buttons and switches accommodate a wide range of applications. A number of standard models are available or custom units can be created to meet specific needs.

VISIT THE WEBSITE TO VIEW ALL PRODUCT VARIANTS

Three year guarantee against breakage of polycarbonate in normal use (one year on electro-mechanical and electronic components).

DESIGN

Incorporates a unique, patented design that helps prevent accidental activation. Custom label option in any language or choose from standard labels. Protective covers available.

INSTALLATION

5VA flammability rating on backplate and spacer. US and European friendly. Back box and spacer kits depend on button choice, options available for flush or surface installations.

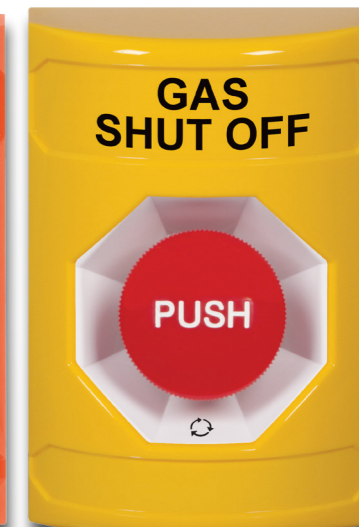


ELECTRONICS

Activation options: Key-to-Reset, Momentary, Turn-to-Reset, Pneumatic or Key-to-Activate. Three 12-24 volt LED colour indicators.

CONSTRUCTION

Station housing moulded of tough polycarbonate. Stainless steel backplate.



1. SS2102EX-EN

Green, Key-to-Reset (illuminated), EMERGENCY EXIT text

2. SS2305ZA-EN

White, Momentary (illuminated), Custom label

3. SS2503ZA-EN

Orange, Key-to-Activate, Custom label

4. SS2201ZA-EN

Yellow, Turn-to-Reset, Custom label

Colour Options



Activation Options

2 = Key-to-Reset
3 = Key-to-Activate
4 = Momentary
7 = Weather Resistant Momentary
8 = Pneumatic
9 = Turn-to-Reset

Standard Text Options

ABORT	EVACUATION
EMERGENCY	EXIT
EMERGENCY EXIT	HVAC SHUT-DOWN
EMERGENCY	LOCKDOWN
POWER OFF	PUSH TO EXIT
EMERGENCY STOP	or CUSTOM TEXT

Language Options

Standard Text languages available:
EN = English ES = Spanish
FR = French ZL = Other Language
CUSTOM TEXT
Available in any language
1 line, 13 characters or 2 lines, 20 characters

COVERS & CAGES

Environmental Enclosures

Alarms, heaters and aircon available on selected models

This range of multipurpose, transparent polycarbonate enclosures and metal cabinets are designed for the protection of fire and security control panels and other electronic equipment. Combining a tough, rugged construction with stylish design, the series offers excellent protection for a wide range of equipment.

VISIT THE WEBSITE TO VIEW ALL PRODUCT VARIANTS

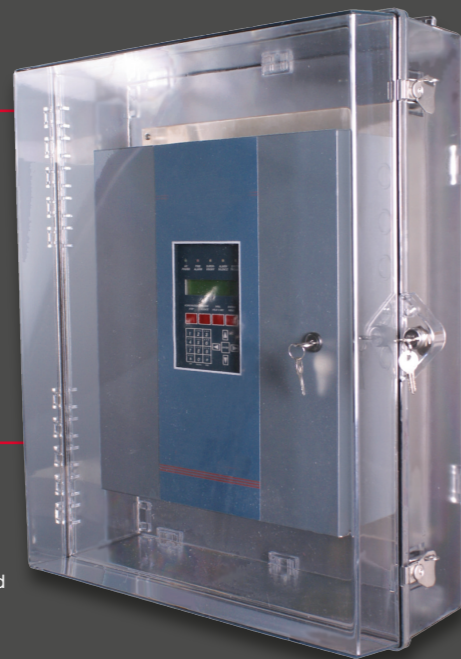
Three year guarantee against breakage of polycarbonate in normal use (one year on electro-mechanical and electronic components).

DESIGN

Robust enclosures protect control panels located in areas where the environmental conditions are extreme or the threat of vandalism and misuse is high.

INSTALLATION

External mounting tabs allow the enclosure to be easily installed on to any wall surface, providing protection without the need to change the location of the equipment. Mounting accessories and tamper-proof screws are provided.



ELECTRONICS

Available with or without a 95 dB alarm, powered by a 9V PP3 battery, to deter unauthorised access to devices.

CONSTRUCTION

Tough UV-stabilised polycarbonate housing can withstand the severest of knocks preventing any vandalism or accidental damage.



1

1. Large Polycarbonate Enclosure

STI-7550 - Key lock
STI-7551 - Thumb lock
STI-7550AH - Key lock, aircon, heater
STI-7551AH - Thumb lock, aircon, heater
629mm x 502mm x 186mm



2

2. AED Cabinet with Thumb Lock

STI-7535AED - Wire shelf, strobe/siren alarm
STI-7533AED - Wire shelf, siren alarm
STI-7531AED - Wire shelf, no alarm
For dimensions, see website



3

3. Small Polycarbonate Enclosure

STI-7520 - Key lock
STI-7521 - Thumb lock
STI-7520-HTR - Key lock, heater
STI-7521-HTR - Thumb lock, heater
225mm x 276mm x 92mm



4

4. Polycarbonate Enclosure with Siren Alarm

STI-7523 - Thumb lock
STI-7522 - Key lock
225mm x 276mm x 92mm



5

5. Medium Polycarbonate Enclosure

STI-7530 - Backplate, key lock
STI-7531 - Backplate, thumb lock
361mm x 310mm x 164mm

COVERS & CAGES

EnviroArmour Enclosures



Weatherproof non-metallic lockable fibreglass or polycarbonate enclosures, designed to prolong the operating life of electronic products that require protection from harsh environments as well as guarding against accidental or malicious damage.

DESIGN

Enclosures protect against vandalism, accidental damage and ingress. Available in a range of sizes to suit a variety of applications. Models available with clear window to allow for remote visual inspection.

INSTALLATION

All enclosures are supplied with mounting plates to allow for instant use of the product.



OPTIONS

All covers are lockable for additional security and can be supplied with a clear or opaque front panel depending on requirements. Available with heater and thermostat options, breather vents and condensation drains.

CONSTRUCTION

Non-metallic. Tough polycarbonate or fibreglass material which allows the unit within to be protected yet accessible. The series is IP66/NEMA Type 4X rated.

VISIT THE WEBSITE TO VIEW ALL PRODUCT VARIANTS

Three year guarantee against breakage of polycarbonate in normal use (one year on electro-mechanical and electronic components).



1

1. Polycarbonate EnviroArmour

Models are IP66 and IK09

ET-121006-O - Opaque door
ET-121006-C - Clear door
250mm x 300mm x 150mm

ET-141007-O - Opaque door
ET-141007-C - Clear door
250mm x 350mm x 180mm

ET-181408-O - Opaque door
ET-181408-C - Clear door
350mm x 465mm x 200mm



2

2. Fibreglass EnviroArmour

Models are IP66

ES-312312-O - Opaque door
ES-312312-W - Clear window
800mm x 600mm x 300mm

ES-231609-O - Opaque door
ES-231609-W - Clear window
600mm x 400mm x 230mm

ES-161608-O - Opaque door
ES-161608-W - Clear window
400mm x 400mm x 200mm

ES-121005-O - Opaque door
ES-121005-W - Clear window
300mm x 250mm x 140mm

COVERS & CAGES

Biometric, Keypad & Thermostat Covers

These tough covers have been designed to protect card readers, access control keypads and similar devices. Guards against abuse and accidental damage, as well as from the external elements. All covers are moulded from tough polycarbonate material that is UV-stabilised against discolouration.

DESIGN

Covers designed to protect access and keypad control panels and thermostats from vandalism, misuse and accidental damage as well as the elements.

INSTALLATION

Quick and easy to install. Covers can be retrofitted over an existing device allowing it to maintain its current location.



OPTIONS

Certain models are available in a smoke finish for further security. Gasket replacement is recommended at least every five years.

CONSTRUCTION

Covers are moulded from tough, UV-stabilised polycarbonate. Models fitted with stainless steel torsion spring allows the cover to maintain in a closed position.

VISIT THE WEBSITE TO VIEW ALL PRODUCT VARIANTS

Three year guarantee against breakage of polycarbonate in normal use.



1. Identification Reader Cover

STI-6520-C - Clear, enclosed
STI-6520-S - Smoke, enclosed
STI-6521-C - Clear, open
STI-6521-S - Smoke, open

2. Bio Protector

BIO-7504 - Clear
BIO-7505 - Smoke

3. Polycarbonate Cover

STI-7700 - Open back
STI-7710 - Open back, lock
STI-7720 - Enclosed back box
STI-7730 - Enclosed back box, lock, gasket

4. Small Thermostat Protector

Flush Model with Frangible Lock
STI-9102 - Clear

5. Large Thermostat Protector

Flush Model with Key Lock
STI-9110 - Large, clear
STI-9105 - Medium, clear

COVERS & CAGES

Steel Web Stoppers®

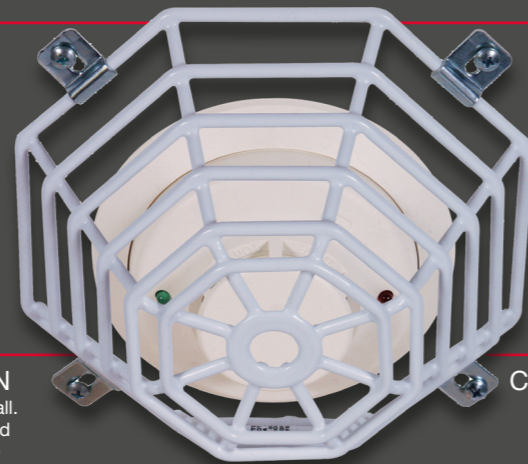
These heavy-duty cages are designed to protect a wide variety of devices; from smoke detectors to CCTV cameras, against vandalism and misuse, whilst allowing the device to remain fully accessible and operational.

DESIGN

These cages are designed to protect smoke and heat detectors and other important equipment from vandalism and misuse. Designed so there is no interference with the operation of the protected unit.

INSTALLATION

Quick and easy to install. Cages can be retrofitted over an existing device allowing it to maintain its current location.



OPTIONS

Where additional security is required from theft or misuse, tamper resistant screws and matching bits are available.

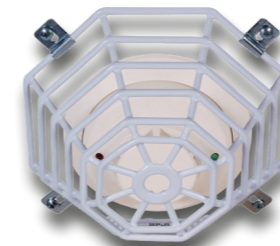
CONSTRUCTION

Constructed from plastic coated, heavy-duty galvanised steel rod, the cages can withstand the severest of abuse from vandalism or accidental damage.

VISIT THE WEBSITE TO VIEW ALL PRODUCT VARIANTS

Three year guarantee against breakage of polycarbonate in normal use.

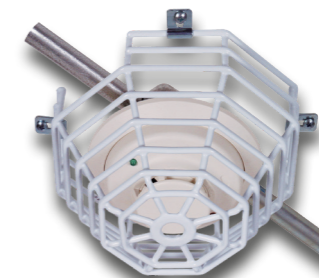
Smoke & Heat Detector Cages



1

1. STI-9604

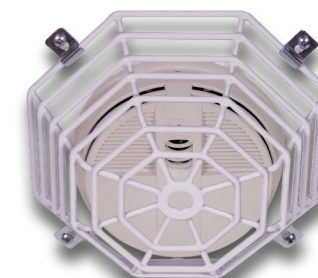
For Smoke & Heat Detectors
175mm x 175mm x 75mm
STI-9606 - 210mm x 210mm x 117mm



2

2. STI-9605

For Smoke & Heat Detectors
180mm x 180mm x 115mm
STI-9610 - 210mm x 210mm x 152mm



3

3. STI-9601

For Smoke & Heat Detectors
210mm x 210mm x 70mm
STI-9602 - 210mm x 210mm x 108mm

Lighting & CCTV Cages



4

4. STI-9644

For Emergency Lighting
220mm x 450mm x 128mm
STI-9641 - 273mm x 372mm x 100mm



5

5. STI-9625

For External Lighting
200mm x 260mm x 321mm

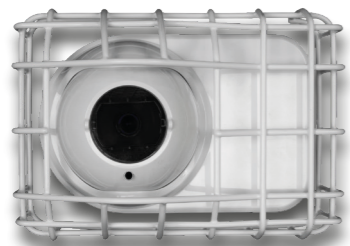


6

6. STI-9880

For Fluorescent Lights
110mm x 1295mm x 152mm
STI-9881 - 110mm x 1898mm x 152mm

Smoke Beam Cages



1



2



3

1. STI-9845

For Smoke Beams
225mm x 140mm x 120mm

2. STI-9624

For Smoke Beams
225mm x 140mm x 120mm
STI-9623 - 197mm x 152mm x 152mm

3. STI-9861

For Smoke Beams
186mm x 160mm x 143mm
STI-9862 - 187mm x 122mm x 70mm

PIR & Motion Detector Cages



4



5



6

4. STI-9620

For PIR & Motion Detectors
156mm x 102mm x 57mm

5. STI-9621

For PIR & Motion Detectors
178mm x 146mm x 114mm

6. STI-9622

For PIR & Motion Detectors
222mm x 102mm x 95mm

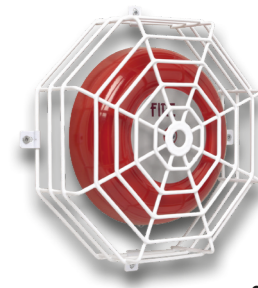
Beacon & Sounder Cages



7



8



9

7. STI-9664

For Beacon & Sounders
98mm x 98mm x 173mm
STI-9665 - 178mm x 178mm x 214mm

8. STI-9617

For Beacons & Sounders
150mm x 150mm x 125mm
STI-9615 - 95mm x 95mm x 88mm

9. STI-9631

For Clocks & Bells
270mm x 270mm x 152mm
STI-9633 - 508mm x 508mm x 152mm

Smoke & Heat Detector Cages (alternative options)



10



11



12

10. STI-9713

For Photoelectric Smoke Detectors
174mm x 174mm x 63mm
STI-9712 - 174mm x 174mm x 115mm

11. STI-8100

For Smoke & Heat Detectors
210mm x 210mm x 95mm
STI-8130 - 210mm x 210mm x 146mm

12. STI-8200-SS

For Smoke & Heat Detectors
203mm x 203mm x 76mm
STI-8230-SS - 203mm x 203mm x 127mm

unauthorised entries. stop vandalism and damage to property. get easy wireless solutions. protect devices in extreme climates and weather. prevent false fire alarms. prevent theft and unauthorised entries. stop vandalism and damage to property. get easy wireless solutions. protect devices in extreme climates and weather. prevent false fire alarms. prevent theft and unauthorised entries. stop vandalism and damage to property. get easy wireless solutions. protect devices in extreme climates



**Safety Technology
International**

STI EMEA Office 34 Sherwood Road, Worcestershire, UK
+44 (0)1527 520 999 sales@sti-emea.com www.sti-emea.com

and damage to property. get easy wireless solutions. protect devices in extreme climates