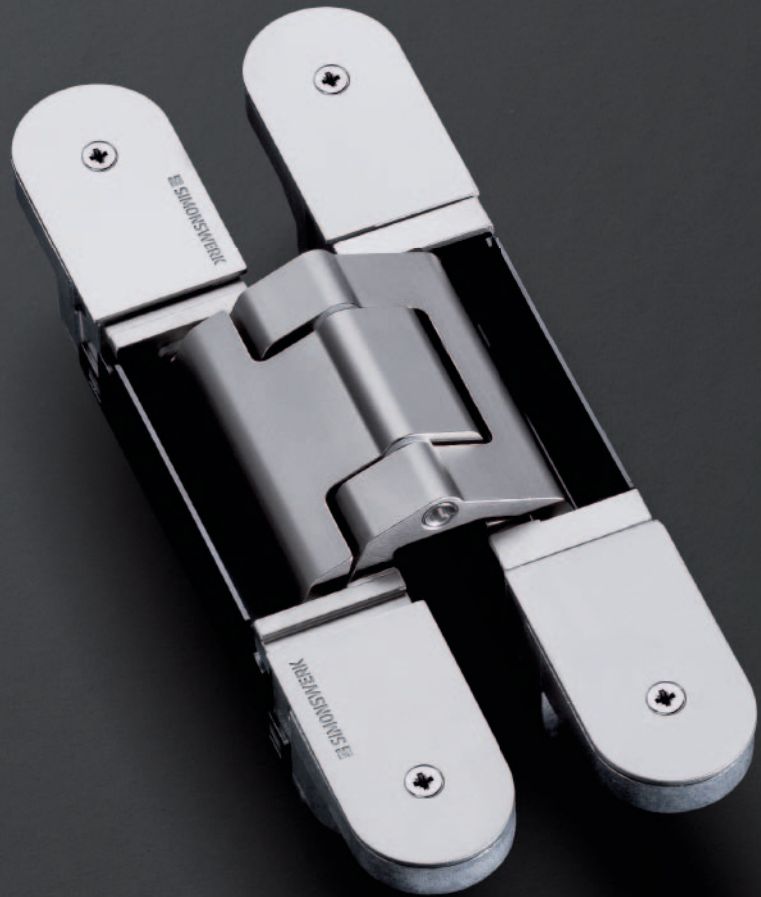


TECTUS®

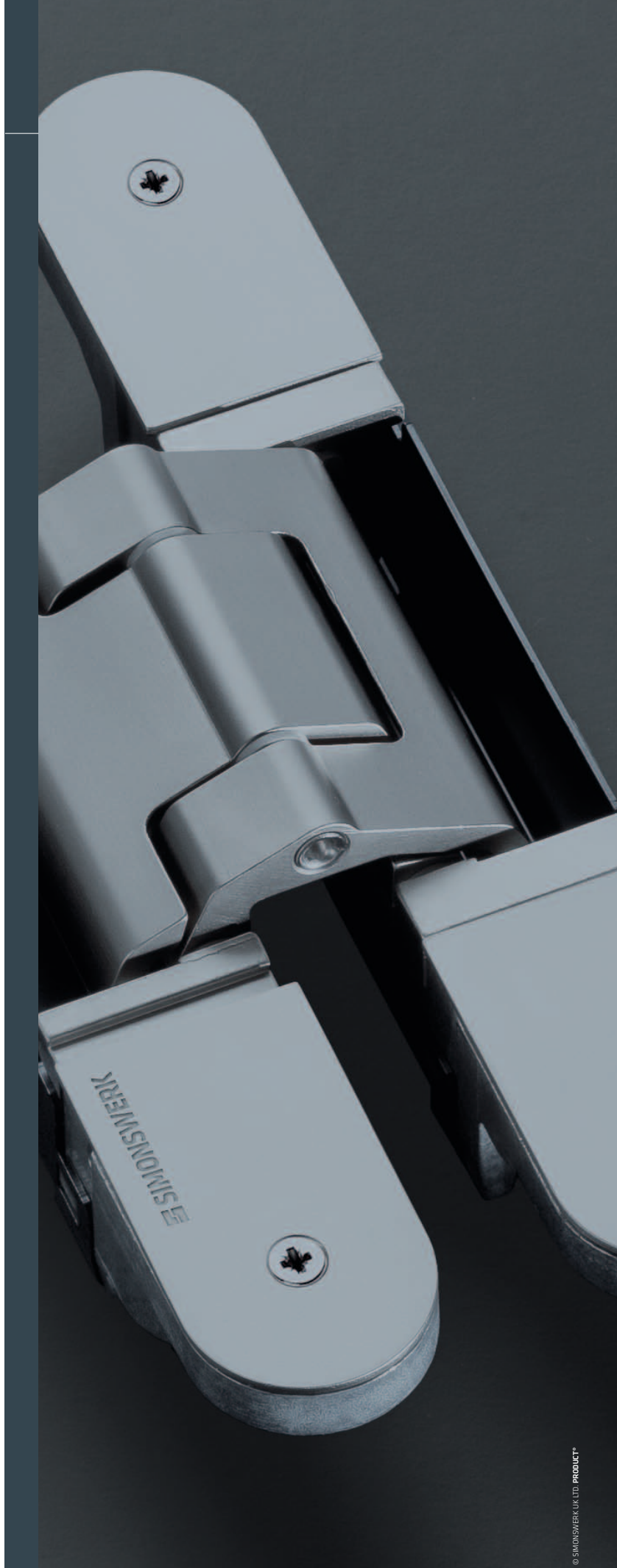


 **SIMONSWERK**
TECTUS®

TECTUS®
Concealed Hinges

INDEX

| | | |
|--------------------------|------------------------|-----------|
| TE 240 3D | up to 40 kg (88 lbs) | 6 |
| TE 340 3D | up to 80 kg (176 lbs) | 7 |
| TE 525 3D | up to 120 kg (264 lbs) | 8 |
| TE 526 3D | up to 120 kg (264 lbs) | 9 |
| TE 527 3D | up to 120 kg (264 lbs) | 10 |
| TE 540 3D | up to 120 kg (264 lbs) | 11 |
| TE 541 3D FVZ | up to 100 kg (220 lbs) | 12 |
| TE 640 3D | up to 200 kg (440 lbs) | 13 |
| TE 645 3D | up to 300 kg (661 lbs) | 14 |
| TE 540 3D A8 | up to 100 kg (220 lbs) | 15 |
| TE 640 3D A8 | up to 160 kg (352 lbs) | 16 |
| TE Energy Series | up to 200 kg (440 lbs) | 17 |
| Fixing Plate FZ/L | Casing Frame/Thin Jamb | 18 |
| Receiver SZ | Steel Frame/Steel Door | 21 |
| Installation | | 24 |
| Adjustment | | 27 |
| Load Capacities | | 28 |
| Finishes | | 31 |



TECTUS® – the completely concealed hinge system

In 2003, SIMONSWERK introduced an innovative concealed hinge, TECTUS, which allows the adjustment of a door in three dimensions.

Now in its fourth generation, the TECTUS series of concealed hinges offers an array of hinges of unsurpassed quality, versatility, and depth. This series features an entire range for your architectural opening needs. The TECTUS hinge offers a “clean” look, which has not been matched by any other manufacturer.

The adjustment feature provides a simple way to create a perfect margin between the door and the frame. This enables the door to be adjusted in three dimensions (horizontal, vertical and in/out) by simply turning an Allen wrench. The refined visual appearance in combination with its maintenance-free slide bearings distinguishes TECTUS from all other concealed hinges.

The A8 versions allow a door to visually disappear into a wall with many different kinds of claddings such as mirrors, laminates, and marble.

Modern and efficient buildings of today often require the ability to control and operate doors remotely. This requires the transfer of electrical power and data/information from door frames to door panels. The TECTUS Energy Series provides a sophisticated way to fulfill the requirement of this technology when card readers, access and door control systems, electrified locks, monitoring systems, and multimedia components are used. The cable with its 16 wires is completely concealed behind the hinge arms in order to avoid unauthorized tampering. The TECTUS Energy hinge is available in a large variety to accommodate different sash weights.

| | | | |
|--|---------------------|--------|-----------|
| New versions with optimized load capacities | TE 240 3D | 40 kg | (88 lbs) |
| | TE 340 3D | 80 kg | (176 lbs) |
| | TE 527 3D | 120 kg | (264 lbs) |
| | TE 540 3D | 120 kg | (264 lbs) |
| | TE 640 3D | 200 kg | (440 lbs) |
| | TE 645 3D | 300 kg | (661 lbs) |
| Versions for various door claddings | TE 540 3D A8 | 100 kg | (220 lbs) |
| | TE 640 3D A8 | 160 kg | (352 lbs) |
| Versions made of solid stainless steel | TE 525 3D | 120 kg | (264 lbs) |
| | TE 526 3D | 120 kg | (264 lbs) |
| Versions for permanent energy transfer | TE 240 3D Energy | 40 kg | (88 lbs) |
| | TE 340 3D Energy | 80 kg | (176 lbs) |
| | TE 526 3D Energy | 120 kg | (264 lbs) |
| | TE 527 3D Energy | 120 kg | (264 lbs) |
| | TE 540 3D Energy | 120 kg | (264 lbs) |
| | TE 640 3D Energy | 200 kg | (440 lbs) |
| | TE 540 3D A8 Energy | 100 kg | (220 lbs) |
| | TE 640 3D A8 Energy | 160 kg | (352 lbs) |
| Version for recessed frame facings | TE 541 3D FVZ | 100 kg | (220 lbs) |

Clean design, high load capacity, secure assembly and multifaceted scope of application for high quality residential and commercial doors.





FEATURES AND BENEFITS

Four versions in different sizes for sash weights up to 300 kg (661 lbs)

Versions for doors with claddings of up to 8 mm (0.315")

Easy adjustment in all three directions with 4 mm (0.157") Allen wrench

Aesthetically pleasing hinge design

Same routing template for door and frame prep for
TE 340 3D – TE 640 3D A8

Plated designer finishes as well as a variety of durable powder coated options

Custom finishes and colors available upon request

TECTUS Energy Series with integrated and permanent energy transfer

TECTUS®

INTERIOR DOOR

TE 240 3D

for flush residential doors

| | |
|--------------|-----------------------------|
| Hinge | up to 40 kg (88 lbs) |
|--------------|-----------------------------|

Technical Data

| | |
|---------------------|---------------------------|
| Load capacity | 40 kg (88 lbs) |
| Length (door/frame) | 155/155 mm (6.102/6.102") |
| Width (door/frame) | 18/21 mm (0.709/0.827") |
| Router bit diameter | 16 mm (0.630") |

Finish

satin chrome look (F1), satin nickel look (F2), stainless steel look (SSL), rustic umber, bronze metallic, traffic white (RAL 9016), matte deep black (RAL 9005), polished brass, polished nickel, satin nickel, satin chrome, other finishes available upon request

Combinations

| | | |
|----------|------------------|---|
| Receiver | Commercial frame | Frame mounted |
| | Casing frame | TE 240 3D FZ/1 |
| | Steel frame | TE 240 3D SZ |
| | Aluminum frame | according to specifications of the frame manufacturer |

Installation Tools

| | |
|-------|-------------------------|
| | Universal milling frame |
| Frame | Template 5 250691 6 |
| Door | Template 5 250692 6 |

Specification Text

SIMONSWERK TECTUS TE 240 3D hinge. Completely concealed for flush doors with wood, steel or aluminum frames. Load capacity 40 kg (88 lbs), opening angle up to 180°, overall length 155 mm (6.102"), non-handed, maintenance-free slide bearings, three-dimensionally adjustable: side +/- 3.0 mm (0.118"), height +/- 3.0 mm (0.118"), compression +/- 1.5 mm (0.059"). Finish ...

Note

The load capacity mentioned above refers to the use of 2 hinges per door leaf (1 x 2 m (39.370 x 78.740")).

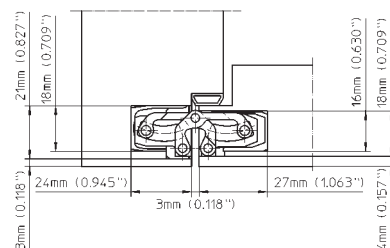
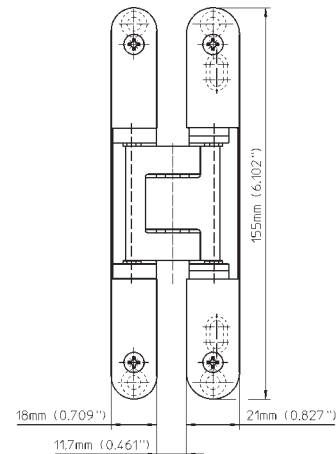
Finger protection due to a small gap between door and frame.

Typical use with door thickness of 35 mm (1 3/8"), but can also be used with higher thicknesses.

Receivers for steel doors upon request.

Templates for collar ring and router bits in inch on request.

For additional technical information regarding TECTUS TE 240 3D Energy see page 17.





TE 340 3D

for flush residential and commercial doors

| | | |
|--------------|--|------------------------------|
| Hinge | | up to 80 kg (176 lbs) |
|--------------|--|------------------------------|

Technical Data

| | |
|---------------------|---------------------------|
| Load capacity | 80 kg (176 lbs) |
| Length (door/frame) | 160/160 mm (6.299/6.299") |
| Width (door/frame) | 28/28 mm (1.102/1.102") |
| Router bit diameter | 24 mm (0.945") |

Finish

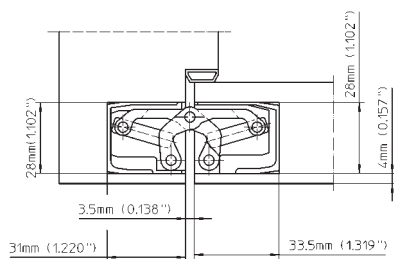
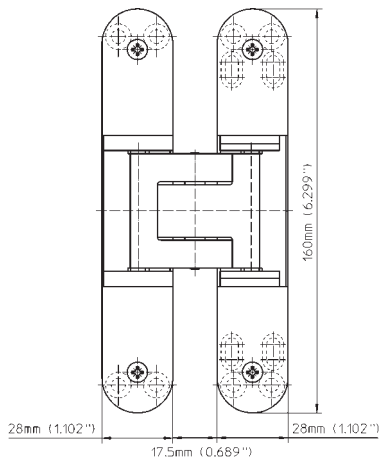
satin chrome look (F1), satin nickel look (F2), stainless steel look (SSL), rustic umber, bronze metallic, traffic white (RAL 9016), matte deep black (RAL 9005), polished brass, polished nickel, satin nickel, satin chrome, other finishes available upon request

Combinations

| | | |
|----------|------------------|---|
| Receiver | Commercial frame | Frame mounted |
| | Casing frame | TE 340 3D FZ/1 |
| | Steel frame | TE 340 3D SZ |
| | Aluminum frame | according to specifications of the frame manufacturer |

Installation Tools

| | |
|--------|-------------------------|
| | Universal milling frame |
| Step 1 | Template 5 250693 5 |
| Step 2 | Template 5 250694 5 |



Specification Text

SIMONSWERK TECTUS TE 340 3D hinge. Completely concealed for flush doors with wood, steel or aluminum frames. Compliant to ANSI/BHMA A156.1-2006 Grade 2, UL listed for 20 minute rated fire doors, with user-friendly 3-way adjustments, load capacity 80 kg (176 lbs), opening angle up to 180°, overall length 160 mm (6.299"), non-handed, maintenance-free slide bearings, three-dimensionally adjustable: side +/- 3.0 mm (0.118"), height +/- 3.0 mm (0.118"), compression +/- 1.0 mm (0.039"). Finish ...

Note

The load capacity mentioned above refers to the use of 2 hinges per door leaf (1 x 2 m (39.370 x 78.740")).

Finger protection due to a small gap between door and frame.

Typical use with door thickness of 44 mm (1 3/4"), but can also be used with higher thicknesses.

Receivers for steel doors upon request.

Templates for collar ring and router bits in inch on request.

For additional technical information regarding TECTUS TE 340 3D Energy see page 17.

For fire rated doors: Check with door manufacturer regarding the usage of additional required intumescent material.

TECTUS®

INTERIOR DOOR, EXTERIOR DOOR

TE 525 3D

manufactured of cast stainless steel (304 series) for flush commercial doors

| | |
|--------------|-------------------------------|
| Hinge | up to 120 kg (264 lbs) |
|--------------|-------------------------------|

Technical Data

| | |
|---------------------|---------------------------|
| Load capacity | 120 kg (264 lbs) |
| Length (door/frame) | 155/155 mm (6.102/6.102") |
| Width (door/frame) | 26/26 mm (1.024/1.024") |
| Router bit diameter | 24 mm (0.945") |

Finish

satin stainless steel

Combinations

| | | |
|----------|------------------|---|
| Receiver | Commercial frame | Frame mounted |
| | Casing frame | TE 525 3D FZ/1 |
| | Steel frame | TE 525 3D SZ |
| | Aluminum frame | according to specifications of the frame manufacturer |

Installation Tools

| | |
|------------|-------------------------|
| | Universal milling frame |
| | Drilling jig TE 525 3D |
| Frame/Door | Template 5 250547 6 |

Specification Text

SIMONSWERK TECTUS TE 525 3D hinge manufactured of cast stainless steel (304 series). Completely concealed for flush doors with wood, steel or aluminum frames. UL listed for 45 minute rated fire doors, with user-friendly 3-way adjustments, load capacity 120 kg (264 lbs), opening angle up to 180°, overall length 155 mm (6.102"), non-handed, maintenance-free slide bearings, three-dimensionally adjustable: side +/- 3.0 mm (0.118") and height +/- 3.0 mm (0.118"), compression +/- 1.0 mm (0.039"). Finish...

Application Range

Fire Resistance, Smoke Resistance, Soundproof, Forced Entry Resistance, High Corrosion Resistance

Note

The load capacity mentioned above refers to the use of 2 hinges per door leaf (1 x 2 m (39.370 x 78.740")).

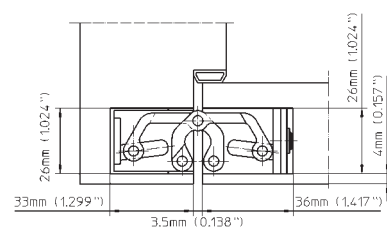
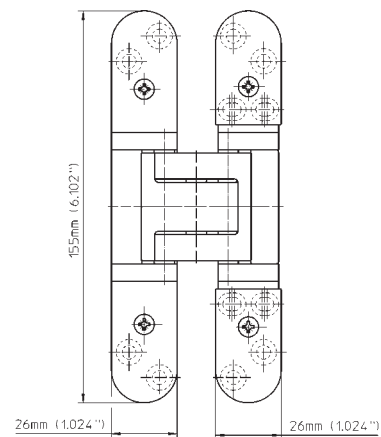
Finger protection due to a small gap between door and frame.

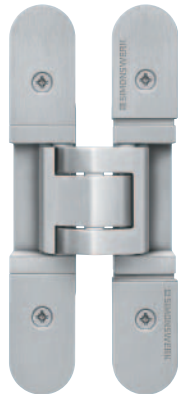
Typical use with door thickness of 44 mm (1 3/4"), but can also be used with higher thicknesses.

Receivers for steel doors upon request.

Templates for collar ring and router bits in inch on request.

For fire rated doors: Check with door manufacturer regarding the usage of additional required intumescent material.





TE 526 3D

manufactured of solid stainless steel (304 series) for flush commercial doors

| | | |
|--------------|--|-------------------------------|
| Hinge | | up to 120 kg (264 lbs) |
|--------------|--|-------------------------------|

Technical Data

| | |
|---------------------|---------------------------|
| Load capacity | 120 kg (264 lbs) |
| Length (door/frame) | 155/155 mm (6.102/6.102") |
| Width (door/frame) | 26/26 mm (1.024/1.024") |
| Router bit diameter | 24 mm (0.945") |

Finish

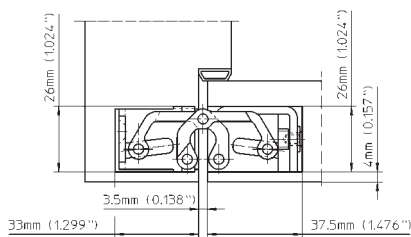
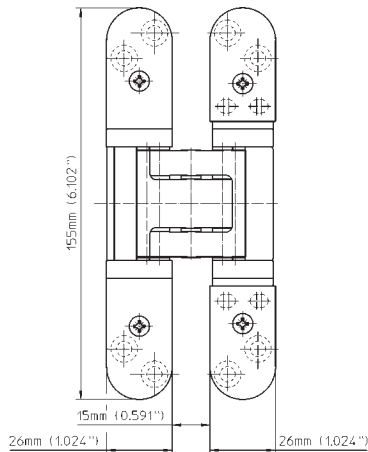
satin stainless steel

Combinations

| | | |
|----------|------------------|---|
| Receiver | Commercial frame | Frame mounted |
| | Casing frame | TE 525 3D FZ/1 |
| | Steel frame | TE 525 3D SZ |
| | Aluminum frame | according to specifications of the frame manufacturer |

Installation Tools

| | |
|------------|-------------------------|
| | Universal milling frame |
| | Drilling jig TE 525 3D |
| Frame/Door | Template 5 250547 6 |



Specification Text

SIMONSWERK TECTUS TE 526 3D hinge manufactured of solid stainless steel (304 series). Completely concealed for flush doors with wood, steel or aluminum frames. With user-friendly 3-way adjustments, load capacity 120 kg (264 lbs), opening angle up to 180°, overall length 155 mm (6.102"), non-handed, maintenance-free slide bearings, three-dimensionally adjustable: side +/- 3.0 mm (0.118") and height +/- 3.0 mm (0.118"), compression +/- 1.0 mm (0.039"). Finish...

Application Range

Fire Resistance, Smoke Resistance, Soundproof, Forced Entry Resistance, High Corrosion Resistance

Note

The load capacity mentioned above refers to the use of 2 hinges per door leaf (1 x 2 m (39.370 x 78.740")).

Finger protection due to a small gap between door and frame.

Typical use with door thickness of 44 mm (1 3/4"), but can also be used with higher thicknesses.

Receivers for steel doors upon request.

Templates for collar ring and router bits in inch on request.

For additional technical information regarding TECTUS TE 526 3D Energy see page 17.

For fire rated doors: Check with door manufacturer regarding the usage of additional required intumescent material.

TECTUS®

INTERIOR DOOR, EXTERIOR DOOR

TE 527 3D

manufactured of mild steel for flush commercial doors

| | |
|-------|------------------------|
| Hinge | up to 120 kg (264 lbs) |
|-------|------------------------|

Technical Data

| | |
|---------------------|---------------------------|
| Load capacity | 120 kg (264 lbs) |
| Length (door/frame) | 155/155 mm (6.102/6.102") |
| Width (door/frame) | 26/26 mm (1.024/1.024") |
| Router bit diameter | 24 mm (0.945") |

Finish

stainless steel look (SSL), other finishes available upon request

Combinations

| | | |
|----------|------------------|---|
| Receiver | Commercial frame | Frame mounted |
| | Casing frame | TE 525 3D FZ/1 |
| | Steel frame | TE 525 3D SZ |
| | Aluminum frame | according to specifications of the frame manufacturer |

Installation Tools

| | |
|------------|-------------------------|
| | Universal milling frame |
| | Drilling jig TE 525 3D |
| Frame/Door | Template 5 250547 6 |

Specification Text

SIMONSWERK TECTUS TE 527 3D hinge manufactured of mild steel. Completely concealed for flush doors with wood, steel or aluminum frames. With user-friendly 3-way adjustments, load capacity up to 120 kg (264 lbs), opening angle up to 180°, overall length 155 mm (6.102"), non-handed, maintenance-free slide bearings, three-dimensionally adjustable: side +/- 3.0 mm (0.118") and height +/- 3.0 mm (0.118"), compression +/- 1.0 mm (0.039"). Finish...

Application Range

Fire Resistance, Smoke Resistance, Soundproof, Forced Entry Resistance

Note

The load capacity mentioned above refers to the use of 2 hinges per door leaf (1 x 2 m (39.370 x 78.740")).

Finger protection due to a small gap between door and frame.

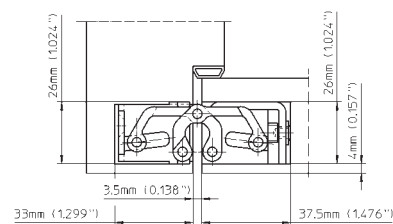
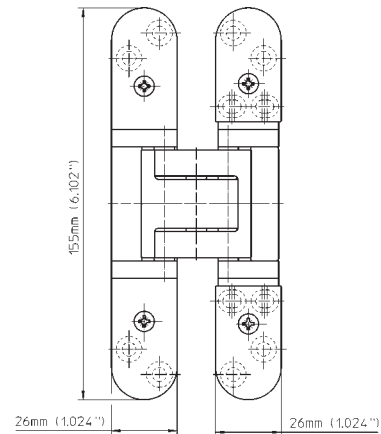
Typical use with door thickness of 44 mm (1 3/4"), but can also be used with higher thicknesses.

Receivers for steel doors upon request.

Templates for collar ring and router bits in inch on request.

For additional technical information regarding TECTUS TE 527 3D Energy see page 17.

For fire rated doors: Check with door manufacturer regarding the usage of additional required intumescent material.





TE 540 3D

for flush commercial doors

| | | |
|--------------|--|-------------------------------|
| Hinge | | up to 120 kg (264 lbs) |
|--------------|--|-------------------------------|

Technical Data

| | |
|---------------------|---------------------------|
| Load capacity | 120 kg (264 lbs) |
| Length (door/frame) | 200/200 mm (7.874/7.874") |
| Width (door/frame) | 32/32 mm (1.260/1.260") |
| Router bit diameter | 24 mm (0.945") |

Finish

satin chrome look (F1), satin nickel look (F2), stainless steel look (SSL), rustic umber, bronze metallic, traffic white (RAL 9016), matte deep black (RAL 9005), polished brass, polished nickel, satin nickel, satin chrome, other finishes available upon request

Combinations

| | | |
|----------|------------------|---|
| Receiver | Commercial frame | Frame mounted |
| | Casing frame | TE 540 3D FZ/1 |
| | Steel frame | TE 540 3D SZ |
| | Aluminum frame | according to specifications of the frame manufacturer |

Installation Tools

| | |
|--------|-------------------------|
| | Universal milling frame |
| Step 1 | Template 5 250680 5 |
| Step 2 | Template 5 250681 5 |

Specification Text

SIMONSWERK TECTUS TE 540 3D hinge. Completely concealed for flush doors with wood, steel and aluminum frames. UL listed for 20 minute rated fire doors, with user-friendly 3-way adjustments, load capacity 120 kg (264 lbs), opening angle up to 180°, overall length 200 mm (7.874"), non-handed, maintenance-free slide bearings, three-dimensionally adjustable: side +/- 3.0 mm (0.118"), height +/- 3.0 mm (0.118"), compression +/- 1.0 mm (0.039"). Finish ...

Application Range

Fire Resistance, Smoke Resistance, Soundproof, Forced Entry Resistance

Note

The load capacity mentioned above refers to the use of 2 hinges per door leaf (1 x 2 m (39.370 x 78.740")).

Finger protection due to a small gap between door and frame.

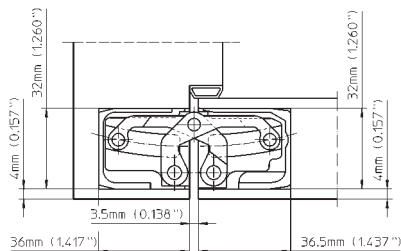
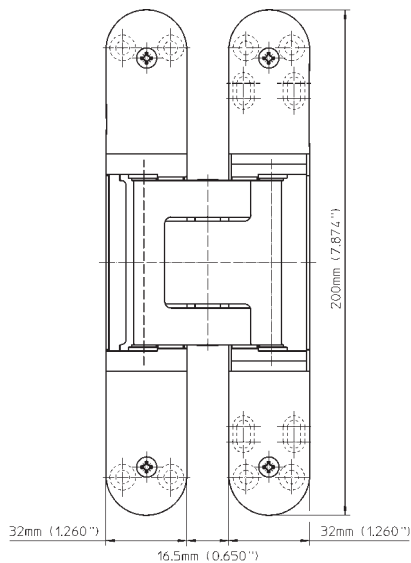
Typical use with door thickness of 44 mm (1 3/4"), but can also be used with higher thicknesses.

Receivers for steel doors upon request.

Templates for collar ring and router bits in inch on request.

For additional technical information regarding TECTUS TE 540 3D Energy see page 17.

For fire rated doors: Check with door manufacturer regarding the usage of additional required intumescent material.



TECTUS®

INTERIOR DOOR, EXTERIOR DOOR

TE 541 3D FVZ

for flush commercial doors with recessed frame facings

| | |
|-------|------------------------|
| Hinge | up to 100 kg (220 lbs) |
|-------|------------------------|

Technical Data

| | |
|---------------------|---------------------------|
| Load capacity | 100 kg (220 lbs) |
| Length (door/frame) | 185/185 mm (7.283/7.283") |
| Width (door/frame) | 28/28 mm (1.102/1.102") |
| Router bit diameter | 24 mm (0.945") |

Finish

satin chrome look (F1), other finishes available upon request

Installation Tools

| | Universal milling frame |
|---------------|-------------------------|
| Door, Step 1 | Template 5 250942 5 |
| Door, Step 2 | Template 5 250943 5 |
| Door, Step 3 | Template 5 250682 5 |
| Frame, Step 1 | Template 5 250942 5 |
| Frame, Step 2 | Template 5 250943 5 |
| Frame, Step 3 | Template 5 250944 5 |

Specification Text

SIMONSWERK TECTUS TE 541 3D FVZ hinge for recessed frame facings. Completely concealed for flush doors with wood, steel or aluminum frames. With user-friendly 3-way adjustments, load capacity up to 100 kg (220 lbs), opening angle up to 180°, overall length 185 mm (7.283"), non-handed, maintenance-free slide bearings, three-dimensionally adjustable: side +/- 3.0 mm (0.118") and height +/- 3.0 mm (0.118"), compression +/- 1.0 mm (0.039"). Finish...

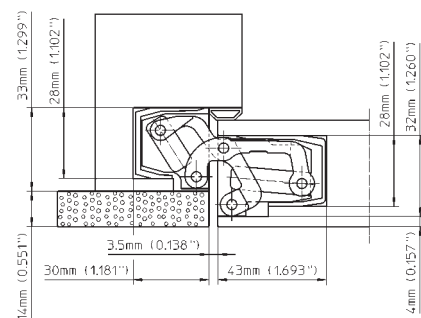
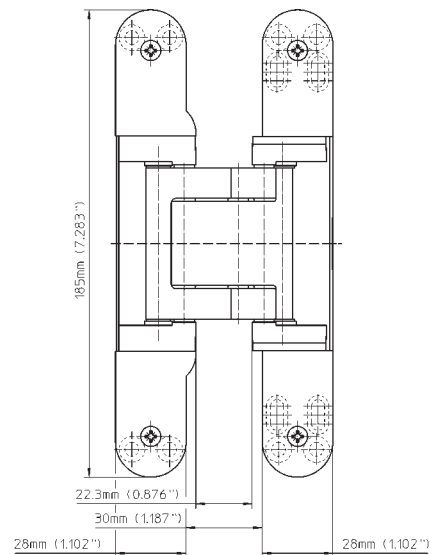
Note

The load capacity mentioned above refers to the use of 2 hinges per door leaf (1 x 2 m (39.370 x 78.740")).

Finger protection on the hinge side due to a small gap between door and frame.

Typical use with door thickness of 44 mm (1 3/4"), but can also be used with higher thicknesses.

Templates for collar ring and router bits in inch on request.





TE 640 3D

for flush high performance commercial doors

| | | |
|--------------|--|-------------------------------|
| Hinge | | up to 200 kg (440 lbs) |
|--------------|--|-------------------------------|

Technical Data

| | |
|---------------------|---------------------------|
| Load capacity | 200 kg (440 lbs) |
| Length (door/frame) | 240/240 mm (9.449/9.449") |
| Width (door/frame) | 32/32 mm (1.260/1.260") |
| Router bit diameter | 24 mm (0.945") |

Finish

satin chrome look (F1), satin nickel look (F2), stainless steel look (SSL), rustic umber, bronze metallic, traffic white (RAL 9016), matte deep black (RAL 9005), polished brass, polished nickel, satin nickel, satin chrome, other finishes available upon request

Combinations

| | | |
|----------|------------------|---|
| Receiver | Commercial frame | Frame mounted |
| | Casing frame | TE 640 3D FZ/1 |
| | Steel frame | TE 640 3D SZ |
| | Aluminum frame | according to specifications of the frame manufacturer |

Installation Tools

| | |
|--------|-------------------------|
| | Universal milling frame |
| Step 1 | Template 5 250659 5 |
| Step 2 | Template 5 250689 5 |

Specification Text

SIMONSWERK TECTUS TE 640 3D hinge. Completely concealed for flush doors with wood, steel or aluminum frames. UL listed for 20 minute rated fire doors, with user-friendly 3-way adjustments, load capacity 200 kg (440 lbs), opening angle up to 180°, overall length 240 mm (9.360"), non-handed, maintenance-free slide bearings, three-dimensionally adjustable: side +/- 3.0 mm (0.118"), height +/- 3.0 mm (0.118"), compression +/- 1.0 mm (0.039"). Finish ...

Application Range

Fire Resistance, Smoke Resistance, Soundproof, Forced Entry Resistance

Note

The load capacity mentioned above refers to the use of 2 hinges per door leaf (1 x 2 m (39.370 x 78.740")).

Finger protection due to a small gap between door and frame.

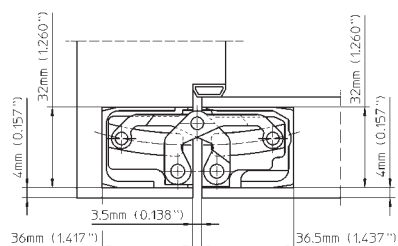
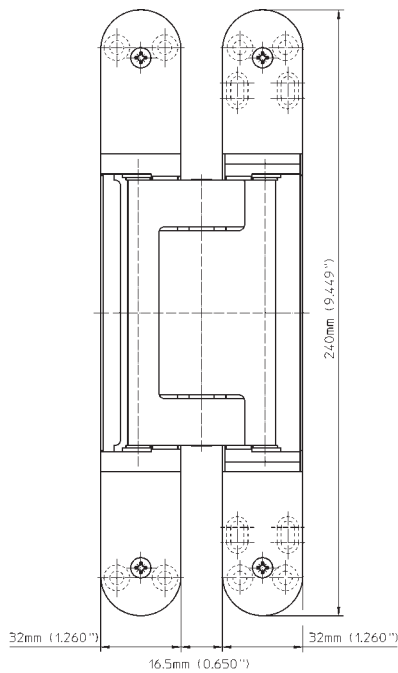
Typical use with door thickness of 44 mm (1 3/4"), but can also be used with higher thicknesses.

Receivers for steel doors upon request.

Templates for collar ring and router bits in inch on request.

For additional technical information regarding TECTUS TE 640 3D Energy see page 17.

For fire rated doors: Check with door manufacturer regarding the usage of additional required intumescent material.



TECTUS®

INTERIOR DOOR, EXTERIOR DOOR

TE 645 3D

for flush high performance commercial doors

| | |
|-------|------------------------|
| Hinge | up to 300 kg (661 lbs) |
|-------|------------------------|

Technical Data

| | |
|---------------------|-----------------------------|
| Load capacity | 300 kg (661 lbs) |
| Length (door/frame) | 260/280 mm (10.236/11.024") |
| Width (door/frame) | 34/36 mm (1.339/1.417") |
| Router bit diameter | 24 mm (0.945") |

Finish

satin chrome look (F1), stainless steel look (SSL), other finishes available upon request

Installation Tools

| | |
|---------------|----------------------------------|
| | Special routing frame on request |
| Frame, Step 1 | Template 5 250945 5 |
| Frame, Step 2 | Template 5 250946 5 |
| Door, Step 1 | Template 5 250947 5 |
| Door, Step 2 | Template 5 250948 5 |

Specification Text

SIMONSWERK TECTUS TE 645 3D hinge. Completely concealed for flush doors with wood, steel or aluminum frames. With user-friendly 3-way adjustments, load capacity up to 300 kg (661 lbs), opening angle up to 180°, overall length 280 mm (11.024"), non-handed, maintenance-free slide bearings, three-dimensionally adjustable: side +/- 3.0 mm (0.118") and height +/- 3.0 mm (0.118"), compression +/- 1.0 mm (0.039"). Finish...

Application Range

Soundproof, Forced Entry Resistance

Note

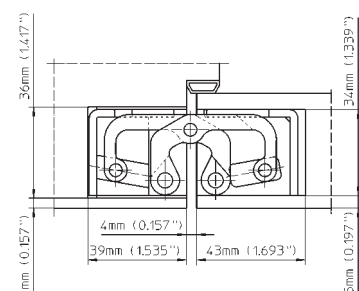
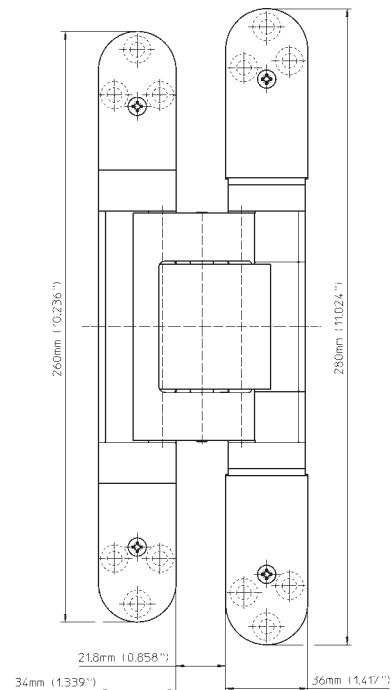
The load capacity mentioned above refers to the use of 2 hinges per door leaf (1 x 2 m (39.370 x 78.740")).

Finger protection due to a small gap between door and frame.

Use with a minimum door thickness of 44 mm (1 3/4"), but can also be used with higher thicknesses.

Receivers for steel doors upon request.

Templates for collar ring and router bits in inch on request.





TE 540 3D A8

for flush commercial doors with claddings up to 8 mm (0.315")

| | | |
|--------------|--|-------------------------------|
| Hinge | | up to 100 kg (220 lbs) |
|--------------|--|-------------------------------|

Technical Data

| | |
|---------------------|-----------------------------|
| Load capacity | 100 kg (220 lbs) |
| Length (door/frame) | 200/200 mm (7.874/7.874") |
| Width (door/frame) | per 32/37 mm (1.260/1.457") |
| Router bit diameter | 24 mm (0.945") |

Finish

satin chrome look (F1), satin nickel look (F2), stainless steel look (SSL), rustic umber, bronze metallic, traffic white (RAL 9016), matte deep black (RAL 9005), polished brass, polished nickel, satin nickel, satin chrome, other finishes available upon request

Combinations

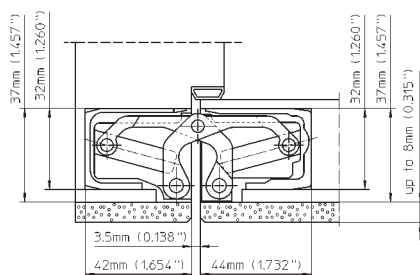
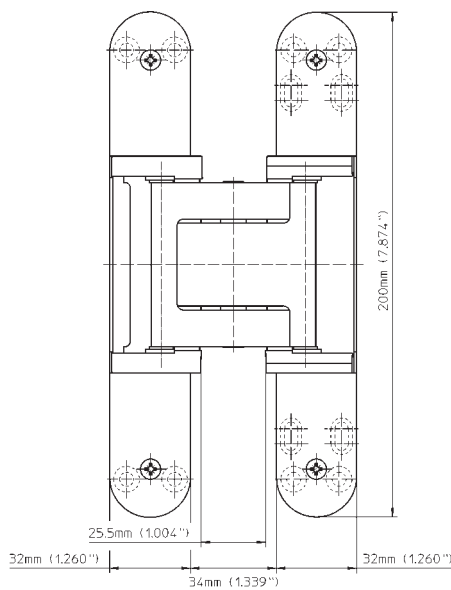
| | | |
|-------------|------------------|---|
| Receiver | Commercial frame | Frame mounted |
| | Casing frame | TE 540 3D FZ/1 |
| | Steel frame | TE 540 3D A8 SZ |
| | Aluminum frame | according to specifications of the frame manufacturer |
| Accessories | Cover plate set | TE 540/640 3D A8 with radius |

Installation Tools

| | |
|------------------|-------------------------|
| | Universal milling frame |
| Step 1 | Template 5 250680 5 |
| Step 2 | Template 5 250681 5 |
| Step 3 | Template 5 250682 5 |
| without cladding | Step 3 |
| | Template 5 250687 5 |

Specification Text

SIMONSWERK TECTUS TE 540 3D A8 hinge for doors with claddings of up to 8 mm (0.315"). Completely concealed for flush doors with wood, steel or aluminum frames. UL listed for 20 minute rated fire doors, with user-friendly 3-way adjustments, load capacity 100 kg (220 lbs), opening angle up to 180°, overall length 200 mm (7.874"), non-handed, maintenance-free slide bearings, three-dimensionally adjustable: side +/- 3.0 mm (0.118"), height +/- 3.0 mm (0.118"), compression +/- 1.0 mm (0.039"). Finish ...



Application Range

Fire Resistance, Smoke Resistance, Soundproof, Forced Entry Resistance

Note

The load capacity mentioned above refers to the use of 2 hinges per door leaf (1 x 2 m (39.370 x 78.740")).

Typical use with door thickness of 44 mm (1 3/4"), but can also be used with higher thicknesses.

Receivers for steel doors upon request.

Templates for collar ring and router bits in inch on request.

For additional technical information regarding TECTUS TE 540 3D A8 Energy see page 17.

For fire rated doors: Check with door manufacturer regarding the usage of additional required intumescent material.

TECTUS®

INTERIOR DOOR, EXTERIOR DOOR

TE 640 3D A8

for flush high performance commercial doors with claddings up to 8 mm (0.315")

| | |
|--------------|-------------------------------|
| Hinge | up to 160 kg (352 lbs) |
|--------------|-------------------------------|

Technical Data

| | |
|---------------------|-----------------------------|
| Load capacity | 160 kg (352 lbs) |
| Length (door/frame) | 240/240 mm (9.449/9.449") |
| Width (door/frame) | per 32/37 mm (1.260/1.457") |
| Router bit diameter | 24 mm (0.945") |

Finish

satin chrome look (F1), satin nickel look (F2), stainless steel look (SSL), rustic umber, bronze metallic, traffic white (RAL 9016), matte deep black (RAL 9005), polished brass, polished nickel, satin nickel, satin chrome, other finishes available upon request

Combinations

| | | |
|-------------|------------------|---|
| Receiver | Commercial frame | Frame mounted |
| | Casing frame | TE 640 3D FZ/1 |
| | Steel frame | TE 640 3D A8 SZ |
| | Aluminum frame | according to specifications of the frame manufacturer |
| Accessories | Cover plate set | TE 540/640 3D A8 with radius |

Installation Tools

| | | |
|------------------|-------------------------|---------------------|
| | Universal milling frame | |
| Step 1 | Template 5 250659 5 | |
| Step 2 | Template 5 250689 5 | |
| Step 3 | Template 5 250690 5 | |
| without cladding | Step 3 | Template 5 250688 5 |

Specification Text

SIMONSWERK TECTUS TE 640 3D A8 hinge for doors with claddings of up to 8 mm (0.315"). Completely concealed for flush doors with wood, steel or aluminum frames. UL listed for 20 minute rated fire doors, with user-friendly 3-way adjustments, load capacity 160 kg (352 lbs), opening angle up to 180°, overall length 240 mm (9.449"), non-handed, maintenance-free slide bearings, three-dimensionally adjustable: side +/- 3.0 mm (0.118"), height +/- 3.0 mm (0.118"), compression +/- 1.0 mm (0.039"). Finish ...

Application Range

Fire Resistance, Smoke Resistance, Soundproof, Forced Entry Resistance

Note

The load capacity mentioned above refers to the use of 2 hinges per door leaf (1 x 2 m (39.370 x 78.740")).

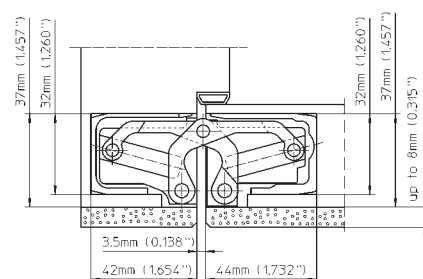
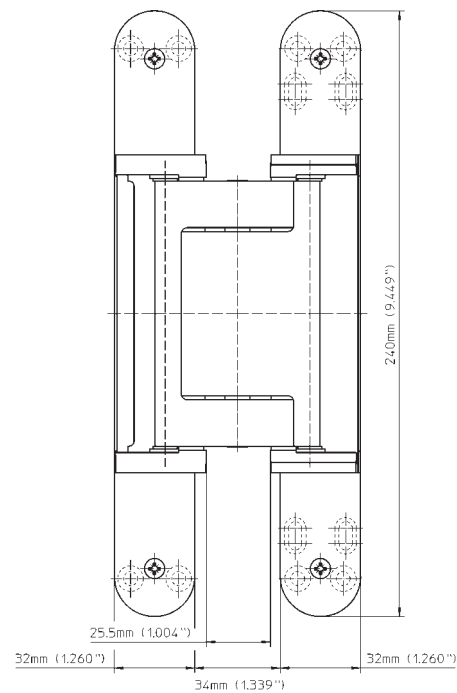
Typical use with door thickness of 44 mm (1 3/4"), but can also be used with higher thicknesses.

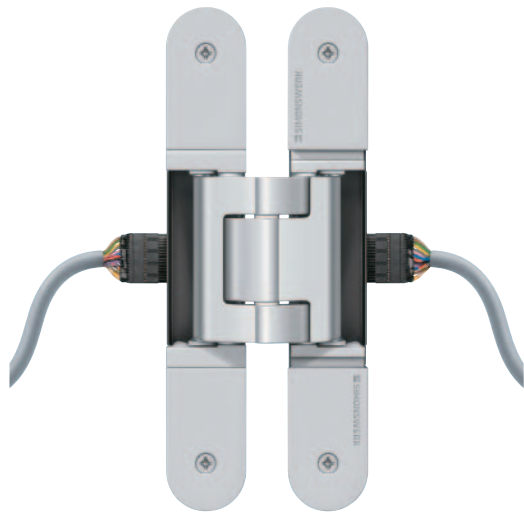
Receivers for steel doors upon request.

Templates for collar ring and router bits in inch on request.

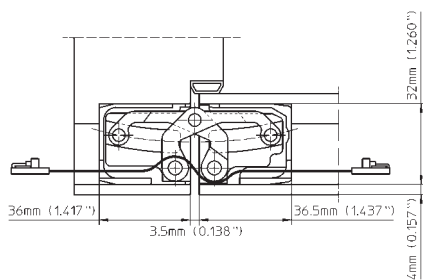
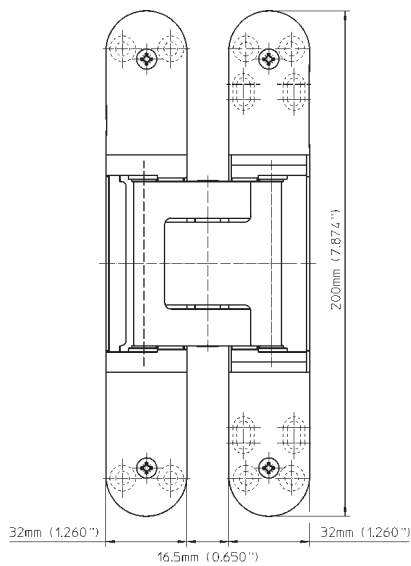
For additional technical information regarding TECTUS TE 640 3D A8 Energy see page 17.

For fire rated doors: Check with door manufacturer regarding the usage of additional required intumescent material.





By way of example.
Other model variants are shown below.



TE Energy Series

with permanent energy transfer for flush doors

| Door Hinge | Energy transfer |
|------------|-----------------|
|------------|-----------------|

Technical Data

| | |
|--------------------|--|
| No. of wires | 16 |
| Wire cross section | 0.14 mm ² |
| max. voltage | 60 V (for voltages of 24 V or higher only with safeguarded power supply) |
| max. current | 0.8 A (per wire) |

Finish

satin chrome look (F1), stainless steel look (SSL), other finishes available upon request

Combinations

| | | |
|----------|------------------|---|
| Receiver | Commercial frame | Frame mounted |
| | Casing frame | TE ... 3D FZ/1 |
| | Steel frame | TE ... 3D SZ |
| | Aluminum frame | according to specifications of the frame manufacturer |

Model Variants / Installation Tools (in addition to templates for standard versions)

| | |
|---------------------|----------------------|
| TE 240 3D Energy | Template 5 250 940 5 |
| TE 340 3D Energy | Template 5 250 939 5 |
| TE 526 3D Energy | Template 5 250 939 5 |
| TE 527 3D Energy | Template 5 250 939 5 |
| TE 540 3D Energy | Template 5 250 939 5 |
| TE 640 3D Energy | Template 5 250 939 5 |
| TE 540 3D A8 Energy | Template 5 250 939 5 |
| TE 640 3D A8 Energy | Template 5 250 939 5 |

Detailed information in our PRODUCTSELECTOR at www.simonswerk-usa.com resp. www.simonswerk-ca.com

Specification Text

SIMONSWERK TECTUS TE ... 3D Energy hinge with integrated and permanent energy transfer. Completely concealed for flush doors with wood, steel or aluminum frames, opening angle up to 180°, non-handed, maintenance-free slide bearings, three-dimensionally adjustable. Finish...

Note

Finger protection due to a small gap between door and frame.

Further technical information (e. g. load capacity, length, width, router bit diameter) are shown on the preceding product pages of the corresponding standard hinge model.

TECTUS Energy can be used with a wide variety of systems. Tested with 1,000,000 opening cycles using the correct application technology.

Scope of Supply

TECTUS TE ... 3D Energy includes a special ribbon cable with plug connection at both ends. Cable set consists of 2 round cables both with reverse-polarity-protected connecting socket for the special ribbon cable (1x round cable for frame, 3.0 m (118.110"), 1x round cable for door leaf, 3.0 m (118.110"), opposite cable ends open.

Fixing Plate TECTUS Series

for flush quality and high performance doors with casing frames

| Fixing | Casing frame |
|--------|--------------|
|--------|--------------|

Finish

galvanized

Combinations

| | |
|-------|---------------------|
| Hinge | TE 240 3D |
| | TE 340 3D |
| | TE 525 3D |
| | TE 526 3D |
| | TE 527 3D |
| | TE 540 3D |
| | TE 640 3D |
| | TE 540 3D A8 |
| | TE 640 3D A8 |
| | energy transfer |
| | TE 340 3D Energy |
| | TE 526 3D Energy |
| | TE 527 3D Energy |
| | TE 540 3D Energy |
| | TE 640 3D Energy |
| | TE 540 3D A8 Energy |
| | TE 640 3D A8 Energy |

Specification Text

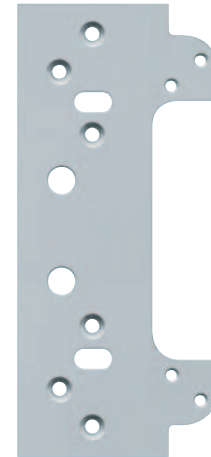
SIMONSWERK fixing plate TECTUS TE ... 3D FZ/1 for anchoring casing frames with hinge TECTUS TE ... 3D for flush doors. Finish...

Note

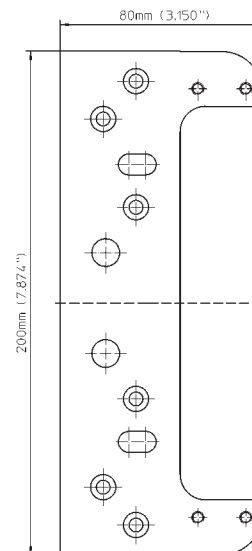
Spacers for casing strengths 22-28 mm (0.866-1.102") are included.

Please specify the exact hinge in your order.

TE 540 3D fixing plate shown. Drawings for other fixing plate sizes available upon request.



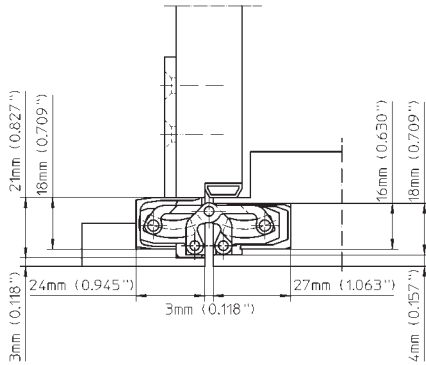
TE 540 3D FZ/1



Fixing Plate TECTUS for casing frames

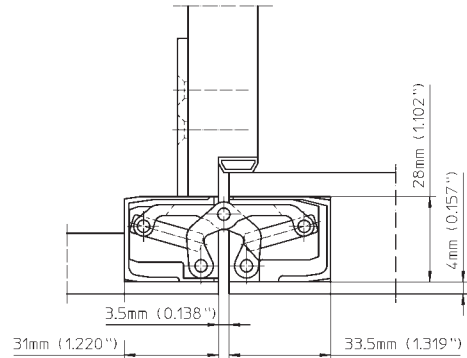
TE 240 3D

Fixing plate: TE 240 3D FZ/1



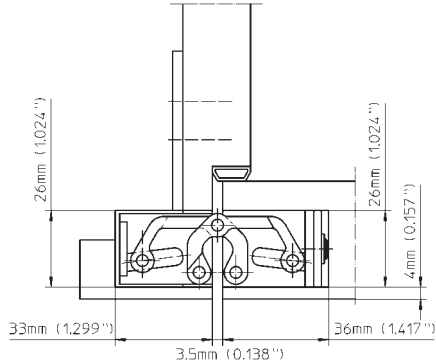
TE 340 3D

Fixing plate: TE 340 3D FZ/1



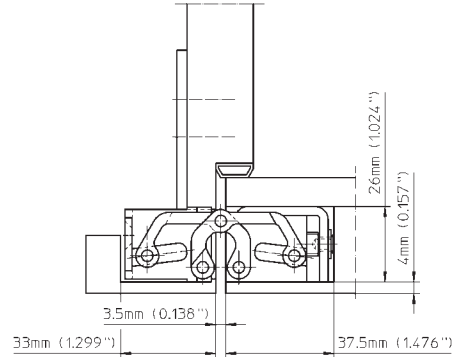
TE 525 3D

Fixing plate: TE 525 3D FZ/1



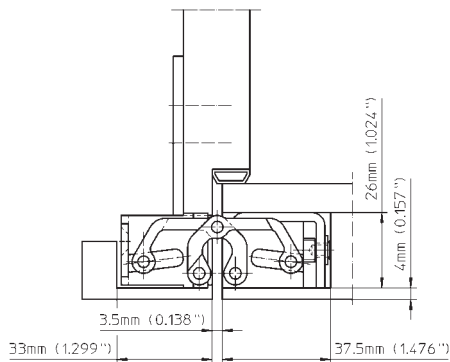
TE 526 3D

Fixing plate: TE 525 3D FZ/1



TE 527 3D

Fixing plate: TE 525 3D FZ/1



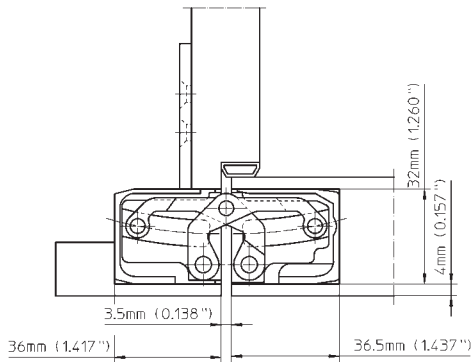
TECTUS®

INTERIOR DOOR, EXTERIOR DOOR

Fixing Plate TECTUS for casing frames

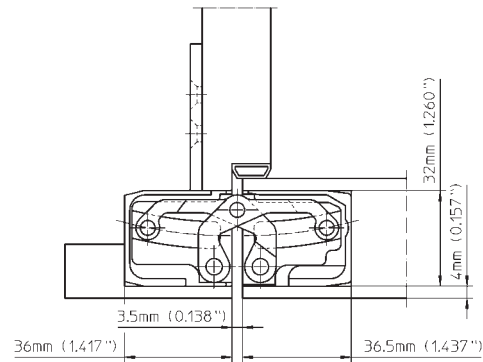
TE 540 3D

Fixing plate: TE 540 3D FZ/1



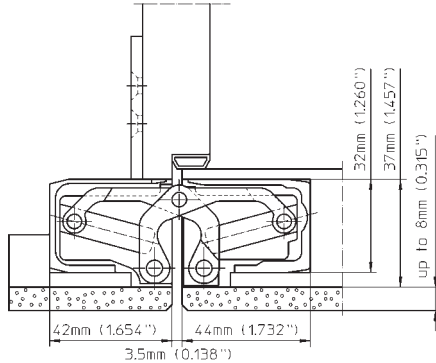
TE 640 3D

Fixing plate: TE 640 3D FZ/1



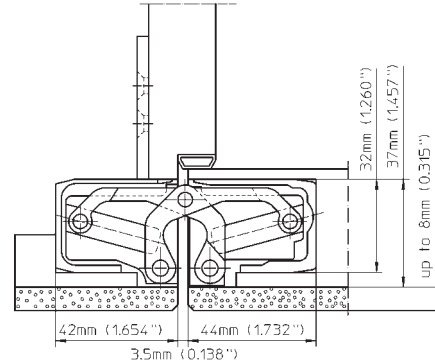
TE 540 3D A8

Fixing plate: TE 540 3D FZ/1



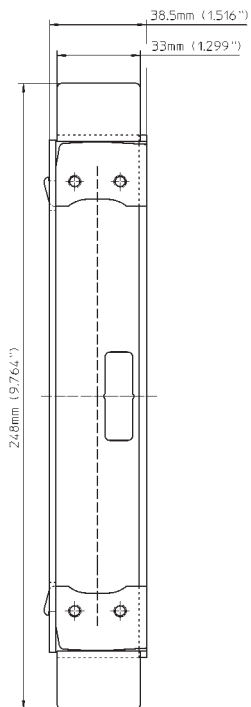
TE 640 3D A8

Fixing plate: TE 640 3D FZ/1





TE 540 3D SZ



Receiver TECTUS Series

for flush doors with steel and stainless steel frames

| | | |
|--------|--|-------------|
| Fixing | | Steel frame |
|--------|--|-------------|

Finish
galvanized, stainless steel

| Combinations | |
|-----------------|--|
| Hinge | TE 240 3D TE 340 3D TE 525 3D TE 526 3D TE 527 3D TE 540 3D TE 640 3D TE 540 3D A8 TE 640 3D A8 |
| energy transfer | TE 240 3D Energy TE 340 3D Energy TE 526 3D Energy TE 527 3D Energy TE 540 3D Energy TE 640 3D Energy TE 540 3D A8 Energy TE 640 3D A8 Energy |

Specification Text
SIMONSWERK receiver TECTUS TE ... 3D SZ for steel frames with hinge TECTUS TE ... 3D for unrebuted doors. Finish...

Note
Please specify the exact hinge and finish in your order.
TE 540 3D receiver shown. Drawings for other receiver sizes available upon request.
Receiver for steel doors available upon request.

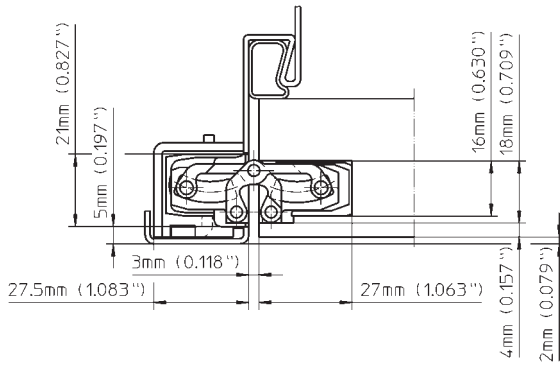
TECTUS®

INTERIOR DOOR, EXTERIOR DOOR

Receiver TECTUS for steel frames

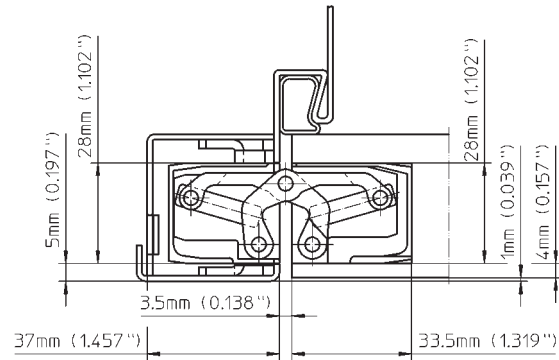
TE 240 3D

Receiver: TE 240 3D SZ



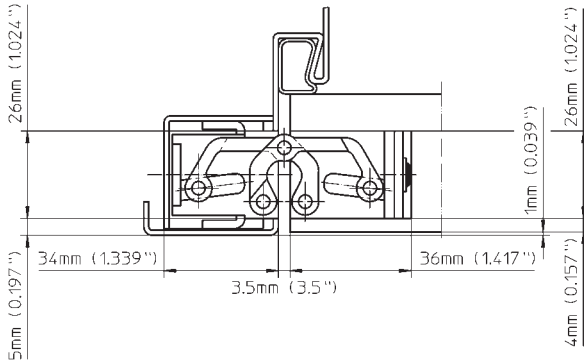
TE 340 3D

Receiver: TE 340 3D SZ



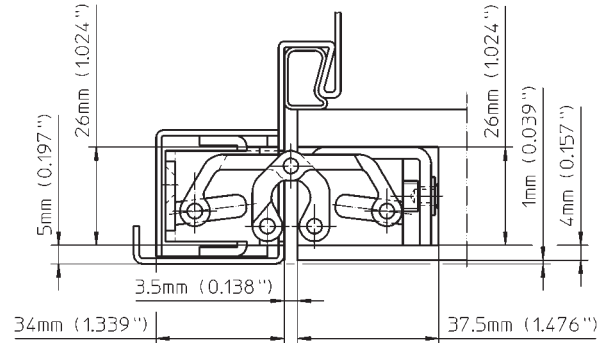
TE 525 3D

Receiver: TE 525 3D SZ



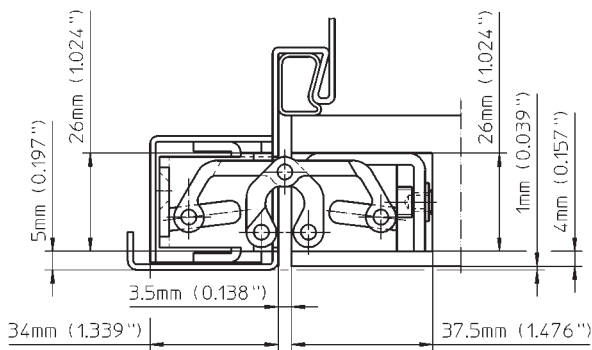
TE 526 3D

Receiver: TE 525 3D SZ



TE 527 3D

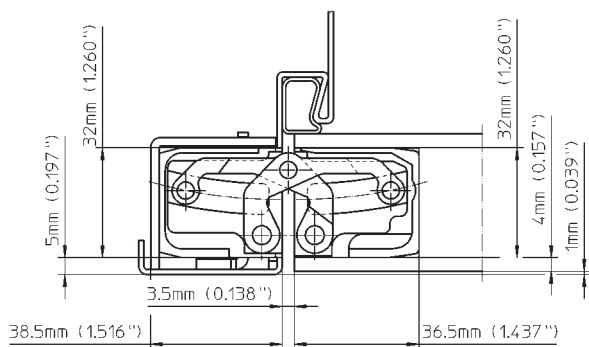
Receiver: TE 525 3D SZ



Receiver TECTUS for steel frames

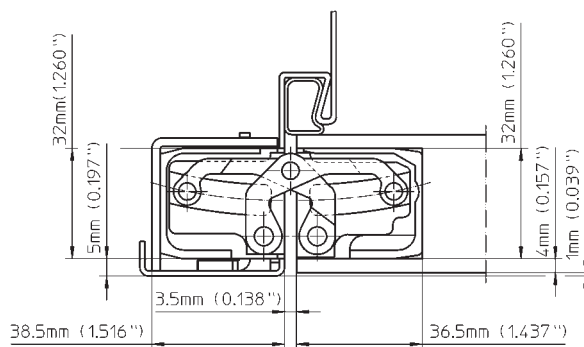
TE 540 3D

Receiver: TE 540 3D SZ



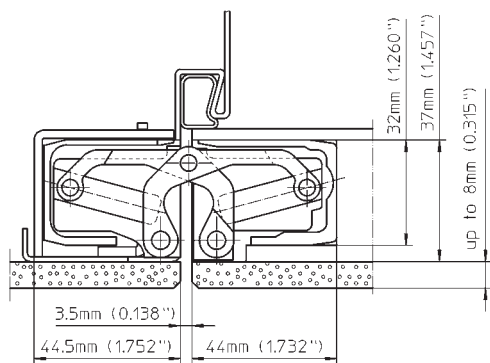
TE 640 3D

Receiver: TE 640 3D SZ



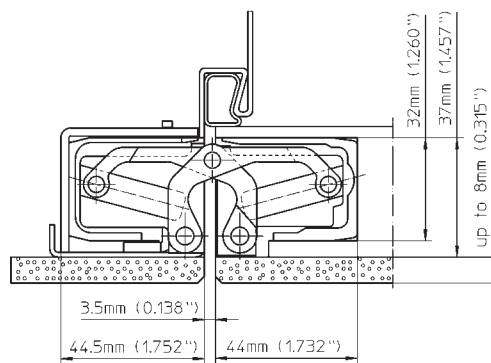
TE 540 3D A8

Receiver: TE 540 3D A8 SZ



TE 640 3D A8

Receiver: TE 640 3D A8 SZ



INSTALLATION

TECHNICAL INFORMATION

TECTUS Series

Door

Affix door part with enclosed wood screws.

Frame

Commercial frame

Conduct routing according to SIMONSWERK routing data. Use router bit with a diameter of 24 mm (0.936") Ø (TE 240 3D router bit 16 mm (0.630") Ø) and collar ring 30 mm (1.181") Ø. Affix frame part with enclosed wood screws.

Casing frame

To guarantee a stable mounting the use of an additional fixing plate is required. Affix the fixing plate with the appropriate screws (not included) behind the casing. Affix the hinge by using the enclosed M5 screws.

Steel frame

Affix frame part of the hinge with the prepared receiver inside the door frame by using the enclosed M5 screws.

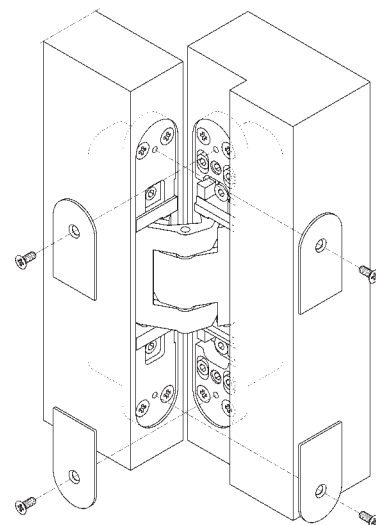
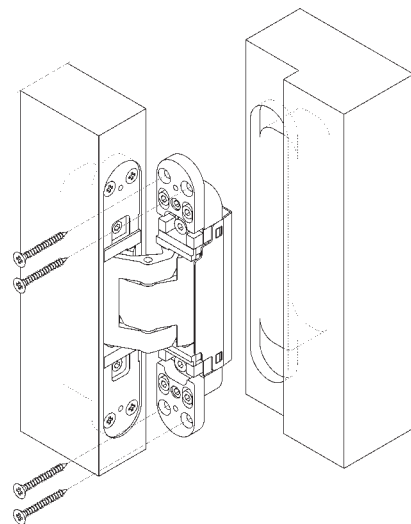
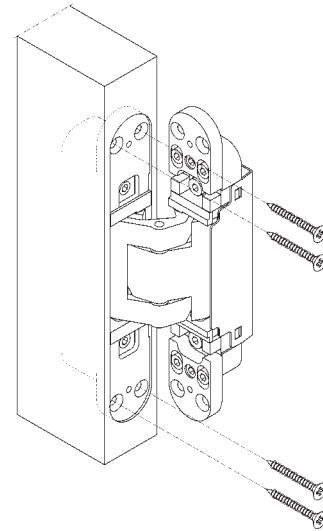
Fix cover plates with of the enclosed screws.

Application technology

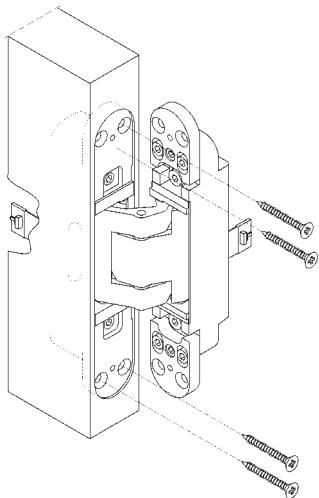
Use the Universal Milling Frame (jig) No. 118 as well fitting installation aid for SIMONSWERK templates.

Standard templates for 24 mm bit / 30 mm collar.

Templates for 3/4" bit / 1" collar on request.



1

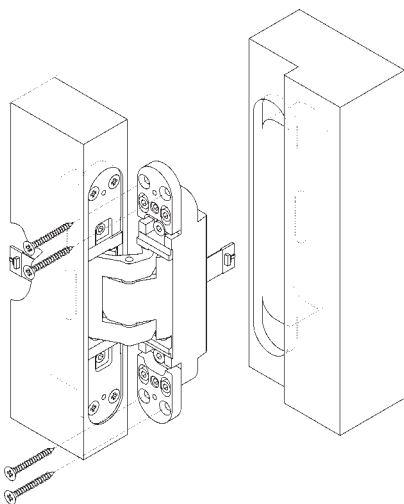


TECTUS Energy Series

Conduct additional routing for the cable on both sides.
Plug the connectors together and install the sash part.

1

2



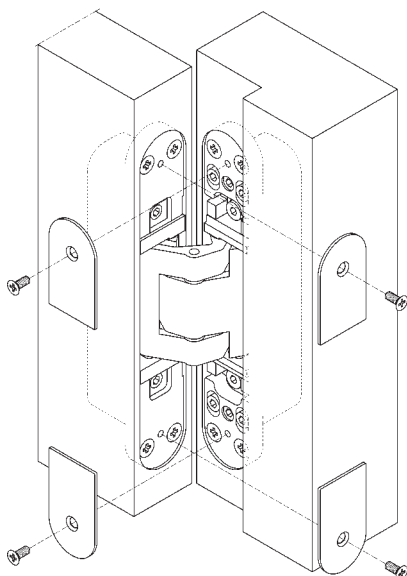
Plug the connectors of the hinge frame part and install the hinge in the jamb.

2

Make sure the plug connectors are engaged properly.

3

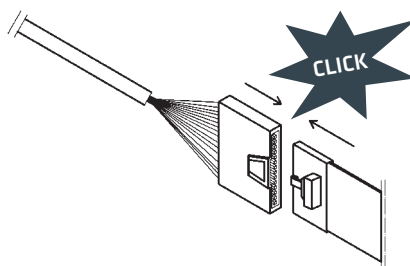
4



Screw the cover plates on by using the enclosed tapping screws onto frame and door part.

4

3



ADJUSTMENT

TECHNICAL INFORMATION

TECTUS Series

Three way adjustable

| | |
|--------|-------------------|
| Side | +/- 3 mm (0.118") |
| Height | +/- 3 mm (0.118") |
| Depth | +/- 1 mm (0.039") |

Side adjustment (horizontal)

- Adjust the adjusting spindles using a 4 mm (0.157") Allen key
- Turn side adjustment screw counterclockwise for increasing the air gap max. 3 mm (0.118") on the locking side
- Turn side adjustment screw clockwise for decreasing the air gap max. 3 mm (0.118") on the locking side

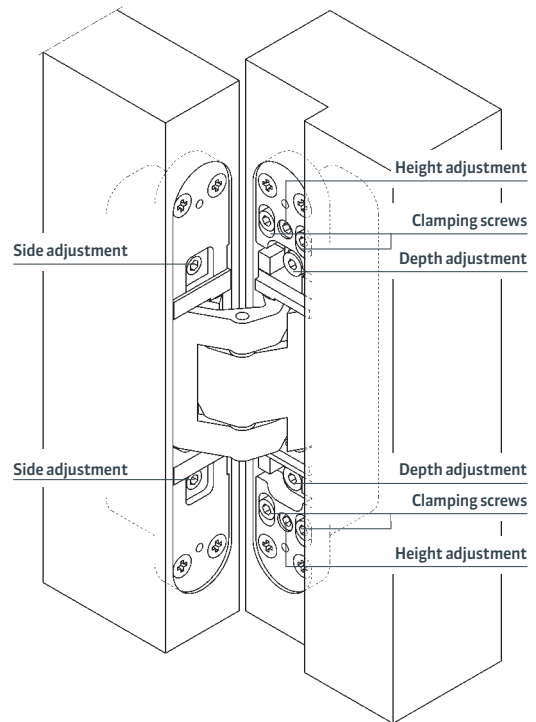
Height adjustment (vertical)

- Slightly loosen all four clamping screws on all hinges
- Adjust the vertical position of the door
- Turn the lower height adjustment screw clockwise for raising the door
- Turn the lower height adjustment screw counterclockwise for lowering the door
Note: Before raising the door make sure that the upper adjustment screw is loosened.
- Retighten the clamping screws on all hinges

Depth adjustment (in/out)

- Slightly loosen the fixing screws
- Align the door to the desired compression
- Retighten the clamping screws

All adjustments can be performed with a 4 mm (0.157") Allen wrench.

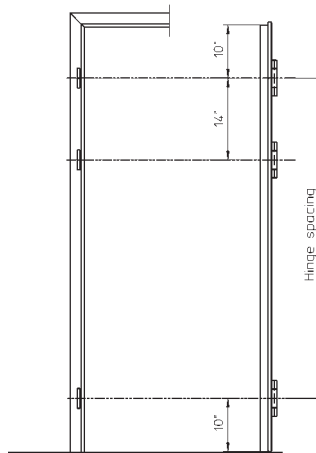


TECTUS Series

To increase the load capacity of the hinges, a third hinge needs to be positioned 14" below the upper hinge (center to center). The use of a third hinge in order to increase the load capacity has to be determined on a case by case basis. Our hinge data refers to a height/width ratio of the door of 2:1 or more. Please contact us for further information and see also the door manufacturers instructions.

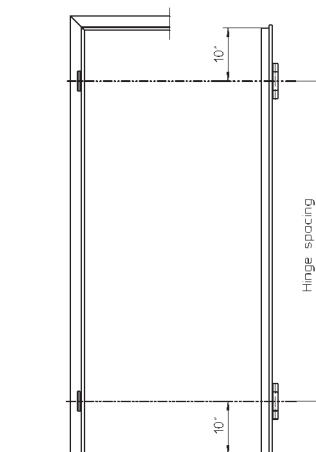
Proper preparation and alignment as well as tension-free adjustment are crucial for a hassle-free operation!

Application with increased load capacity

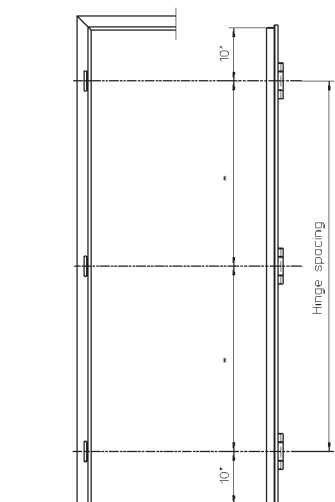


Examples for applications with different door heights

< 8 ft



≥ 8 ft



The hinge spacing does not increase the load capacity!

Note: We recommend for all exterior doors the use of three hinges.

LOAD CAPACITIES

TECHNICAL INFORMATION

Overview of load values for hinges

The following table provides you with an overview of the maximum load value for the individual hinge type, taking the interaction of width and height of the door as well as the hinge spacing into account.

Assuming a reference value with door leaf dimensions of 1000 x 2000 mm (39.4" x 78.7")(W x H), the use of 2 hinges and a hinge spacing of 1435 mm (56.5"), the permissible load values change with different width and height ratios.

Indicated data refer to hinges only. For required number of hinges and hinge spacing refer to door manufacturers recommendation.

Green: load value = reference value, **Orange:** load value < reference value.

| | | | | | | | | | | | | | | |
|------------------------------|--------------|---------------------------|------------|-------------|-------------|-------------|-------------|-------------|-------------|-------------|-------------|-------------|-------------|-------------|
| → Hinge spacing in mm / inch | >2000 / 78.7 | 40 / 88 | 40 / 88 | 40 / 88 | 40 / 88 | 40 / 88 | 40 / 88 | 40 / 88 | 40 / 88 | 40 / 88 | 40 / 88 | 40 / 88 | 40 / 88 | 40 / 88 |
| | 2000 / 78.7 | 40 / 88 | 40 / 88 | 40 / 88 | 40 / 88 | 40 / 88 | 40 / 88 | 40 / 88 | 40 / 88 | 40 / 88 | 40 / 88 | 40 / 88 | 40 / 88 | 40 / 88 |
| | 1950 / 76.8 | 40 / 88 | 40 / 88 | 40 / 88 | 40 / 88 | 40 / 88 | 40 / 88 | 40 / 88 | 40 / 88 | 40 / 88 | 40 / 88 | 40 / 88 | 40 / 88 | 40 / 88 |
| | 1900 / 74.8 | 40 / 88 | 40 / 88 | 40 / 88 | 40 / 88 | 40 / 88 | 40 / 88 | 40 / 88 | 40 / 88 | 40 / 88 | 40 / 88 | 40 / 88 | 40 / 88 | 40 / 88 |
| | 1850 / 72.8 | 40 / 88 | 40 / 88 | 40 / 88 | 40 / 88 | 40 / 88 | 40 / 88 | 40 / 88 | 40 / 88 | 40 / 88 | 40 / 88 | 40 / 88 | 40 / 88 | 40 / 88 |
| | 1800 / 70.9 | 40 / 88 | 40 / 88 | 40 / 88 | 40 / 88 | 40 / 88 | 40 / 88 | 40 / 88 | 40 / 88 | 40 / 88 | 40 / 88 | 40 / 88 | 40 / 88 | 39 / 85 |
| | 1750 / 68.9 | 40 / 88 | 40 / 88 | 40 / 88 | 40 / 88 | 40 / 88 | 40 / 88 | 40 / 88 | 40 / 88 | 39 / 85 | 38 / 83 | 38 / 83 | 36 / 79 | 36 / 79 |
| | 1700 / 66.9 | 40 / 88 | 40 / 88 | 40 / 88 | 40 / 88 | 40 / 88 | 40 / 88 | 40 / 88 | 39 / 85 | 38 / 83 | 37 / 81 | 36 / 79 | 35 / 77 | 35 / 77 |
| | 1650 / 65.0 | 40 / 88 | 40 / 88 | 40 / 88 | 40 / 88 | 40 / 88 | 40 / 88 | 40 / 88 | 39 / 85 | 38 / 83 | 37 / 81 | 36 / 79 | 35 / 77 | 34 / 74 |
| | 1600 / 63.0 | 40 / 88 | 40 / 88 | 40 / 88 | 40 / 88 | 40 / 88 | 40 / 88 | 40 / 88 | 39 / 85 | 38 / 83 | 37 / 81 | 36 / 79 | 35 / 77 | 33 / 72 |
| | 1550 / 61.0 | 40 / 88 | 40 / 88 | 40 / 88 | 40 / 88 | 40 / 88 | 39 / 85 | 38 / 83 | 37 / 81 | 36 / 79 | 35 / 77 | 34 / 74 | 33 / 72 | 31 / 68 |
| | 1435 / 56.5 | 40 / 88 | 40 / 88 | 40 / 88 | 38 / 83 | 36 / 79 | 35 / 77 | 33 / 72 | 32 / 70 | 31 / 68 | 30 / 66 | 29 / 64 | 28 / 62 | 27 / 60 |
| | | 900 / 35.4 | 950 / 37.4 | 1000 / 39.4 | 1050 / 41.3 | 1100 / 43.3 | 1150 / 45.3 | 1200 / 47.2 | 1250 / 49.2 | 1300 / 51.2 | 1350 / 53.1 | 1400 / 55.1 | 1450 / 57.1 | 1500 / 59.1 |
| | | → Door width in mm / inch | | | | | | | | | | | | |

REFERENCE VALUE 40 KG / 88 lbs

TE 240 3D TE 240 3D Energy

| | | | | | | | | | | | | | | |
|------------------------------|--------------|---------------------------|------------|-------------|-------------|-------------|-------------|-------------|-------------|-------------|-------------|-------------|-------------|-------------|
| → Hinge spacing in mm / inch | >2000 / 78.7 | 80 / 176 | 80 / 176 | 80 / 176 | 80 / 176 | 80 / 176 | 80 / 176 | 80 / 176 | 80 / 176 | 80 / 176 | 80 / 176 | 80 / 176 | 80 / 176 | 80 / 176 |
| | 2000 / 78.7 | 80 / 176 | 80 / 176 | 80 / 176 | 80 / 176 | 80 / 176 | 80 / 176 | 80 / 176 | 80 / 176 | 80 / 176 | 80 / 176 | 80 / 176 | 80 / 176 | 80 / 176 |
| | 1950 / 76.8 | 80 / 176 | 80 / 176 | 80 / 176 | 80 / 176 | 80 / 176 | 80 / 176 | 80 / 176 | 80 / 176 | 80 / 176 | 80 / 176 | 80 / 176 | 80 / 176 | 80 / 176 |
| | 1900 / 74.8 | 80 / 176 | 80 / 176 | 80 / 176 | 80 / 176 | 80 / 176 | 80 / 176 | 80 / 176 | 80 / 176 | 80 / 176 | 80 / 176 | 80 / 176 | 80 / 176 | 80 / 176 |
| | 1850 / 72.8 | 80 / 176 | 80 / 176 | 80 / 176 | 80 / 176 | 80 / 176 | 80 / 176 | 80 / 176 | 80 / 176 | 80 / 176 | 80 / 176 | 80 / 176 | 80 / 176 | 79 / 174 |
| | 1800 / 70.9 | 80 / 176 | 80 / 176 | 80 / 176 | 80 / 176 | 80 / 176 | 80 / 176 | 80 / 176 | 80 / 176 | 80 / 176 | 80 / 176 | 80 / 176 | 80 / 176 | 77 / 169 |
| | 1750 / 68.9 | 80 / 176 | 80 / 176 | 80 / 176 | 80 / 176 | 80 / 176 | 80 / 176 | 80 / 176 | 80 / 176 | 78 / 171 | 76 / 167 | 75 / 165 | 74 / 163 | 73 / 160 |
| | 1700 / 66.9 | 80 / 176 | 80 / 176 | 80 / 176 | 80 / 176 | 80 / 176 | 80 / 176 | 80 / 176 | 79 / 174 | 76 / 167 | 74 / 163 | 72 / 159 | 71 / 156 | 70 / 154 |
| | 1650 / 65.0 | 80 / 176 | 80 / 176 | 80 / 176 | 80 / 176 | 80 / 176 | 80 / 176 | 80 / 176 | 78 / 171 | 74 / 163 | 72 / 159 | 70 / 154 | 69 / 152 | 68 / 150 |
| | 1600 / 63.0 | 80 / 176 | 80 / 176 | 80 / 176 | 80 / 176 | 80 / 176 | 80 / 176 | 80 / 176 | 78 / 171 | 74 / 163 | 71 / 156 | 69 / 152 | 67 / 148 | 66 / 145 |
| | 1550 / 61.0 | 80 / 176 | 80 / 176 | 80 / 176 | 80 / 176 | 80 / 176 | 79 / 174 | 75 / 165 | 72 / 158 | 69 / 152 | 67 / 148 | 65 / 144 | 64 / 141 | 63 / 138 |
| | 1435 / 56.5 | 80 / 176 | 80 / 176 | 80 / 176 | 76 / 167 | 73 / 160 | 70 / 154 | 67 / 147 | 64 / 141 | 62 / 136 | 60 / 132 | 58 / 128 | 56 / 124 | 55 / 121 |
| | | 900 / 35.4 | 950 / 37.4 | 1000 / 39.4 | 1050 / 41.3 | 1100 / 43.3 | 1150 / 45.3 | 1200 / 47.2 | 1250 / 49.2 | 1300 / 51.2 | 1350 / 53.1 | 1400 / 55.1 | 1450 / 57.1 | 1500 / 59.1 |
| | | → Door width in mm / inch | | | | | | | | | | | | |

REFERENCE VALUE 80 KG / 176 lbs

TE 340 3D TE 340 3D Energy

Overview of load values for hinges

REFERENCE VALUE 100 KG / 220 lbs

- TE 541 3D FVZ
- TE 540 3D A8
- TE 540 3D A8 Energy

| | | | | | | | | | | |
|------------|------------|-------------|-------------|-------------|-------------|-------------|-------------|-------------|-----------|--------------|
| 100 / 220 | 100 / 220 | 100 / 220 | 100 / 220 | 100 / 220 | 100 / 220 | 100 / 220 | 100 / 220 | 100 / 220 | 100 / 220 | >2000 / 78.7 |
| 100 / 220 | 100 / 220 | 100 / 220 | 100 / 220 | 100 / 220 | 100 / 220 | 100 / 220 | 100 / 220 | 100 / 220 | 100 / 220 | 2000 / 78.7 |
| 100 / 220 | 100 / 220 | 100 / 220 | 100 / 220 | 100 / 220 | 100 / 220 | 100 / 220 | 100 / 220 | 100 / 220 | 100 / 220 | 1950 / 76.8 |
| 100 / 220 | 100 / 220 | 100 / 220 | 100 / 220 | 100 / 220 | 100 / 220 | 100 / 220 | 100 / 220 | 100 / 220 | 100 / 220 | 1900 / 74.8 |
| 100 / 220 | 100 / 220 | 100 / 220 | 100 / 220 | 100 / 220 | 100 / 220 | 100 / 220 | 100 / 220 | 100 / 220 | 99 / 218 | 1850 / 72.8 |
| 100 / 220 | 100 / 220 | 100 / 220 | 100 / 220 | 100 / 220 | 100 / 220 | 100 / 220 | 100 / 220 | 100 / 220 | 96 / 211 | 1800 / 70.9 |
| 100 / 220 | 100 / 220 | 100 / 220 | 100 / 220 | 100 / 220 | 100 / 220 | 100 / 220 | 100 / 220 | 98 / 216 | 94 / 207 | 1750 / 68.9 |
| 100 / 220 | 100 / 220 | 100 / 220 | 100 / 220 | 100 / 220 | 100 / 220 | 100 / 220 | 99 / 218 | 95 / 209 | 91 / 200 | 1700 / 66.9 |
| 100 / 220 | 100 / 220 | 100 / 220 | 100 / 220 | 100 / 220 | 100 / 220 | 100 / 220 | 100 / 220 | 96 / 211 | 92 / 202 | 1650 / 65.0 |
| 100 / 220 | 100 / 220 | 100 / 220 | 100 / 220 | 100 / 220 | 100 / 220 | 97 / 213 | 93 / 205 | 89 / 196 | 86 / 189 | 1600 / 63.0 |
| 100 / 220 | 100 / 220 | 100 / 220 | 100 / 220 | 98 / 216 | 94 / 207 | 90 / 198 | 86 / 189 | 83 / 182 | 80 / 176 | 1550 / 61.0 |
| 100 / 220 | 100 / 220 | 100 / 220 | 95 / 209 | 91 / 200 | 87 / 191 | 83 / 182 | 80 / 176 | 77 / 169 | 74 / 163 | 1435 / 56.5 |
| 900 / 35.4 | 950 / 37.4 | 1000 / 39.4 | 1050 / 41.3 | 1100 / 43.3 | 1150 / 45.3 | 1200 / 47.2 | 1250 / 49.2 | 1300 / 51.2 | | |

→ Door width in mm / inch

→ Hinge spacing in mm / inch

REFERENCE VALUE 120 KG / 264 lbs

- TE 525 3D
- TE 526 3D
- TE 527 3D
- TE 540 3D
- TE 526 3D Energy
- TE 527 3D Energy
- TE 540 3D Energy

| | | | | | | | | | | |
|------------|------------|-------------|-------------|-------------|-------------|-------------|-------------|-------------|-----------|--------------|
| 120 / 264 | 120 / 264 | 120 / 264 | 120 / 264 | 120 / 264 | 120 / 264 | 120 / 264 | 120 / 264 | 120 / 264 | 120 / 264 | >2000 / 78.7 |
| 120 / 264 | 120 / 264 | 120 / 264 | 120 / 264 | 120 / 264 | 120 / 264 | 120 / 264 | 120 / 264 | 120 / 264 | 120 / 264 | 2000 / 78.7 |
| 120 / 264 | 120 / 264 | 120 / 264 | 120 / 264 | 120 / 264 | 120 / 264 | 120 / 264 | 120 / 264 | 120 / 264 | 120 / 264 | 1950 / 76.8 |
| 120 / 264 | 120 / 264 | 120 / 264 | 120 / 264 | 120 / 264 | 120 / 264 | 120 / 264 | 120 / 264 | 120 / 264 | 120 / 264 | 1900 / 74.8 |
| 120 / 264 | 120 / 264 | 120 / 264 | 120 / 264 | 120 / 264 | 120 / 264 | 120 / 264 | 120 / 264 | 120 / 264 | 119 / 262 | 1850 / 72.8 |
| 120 / 264 | 120 / 264 | 120 / 264 | 120 / 264 | 120 / 264 | 120 / 264 | 120 / 264 | 120 / 264 | 120 / 264 | 116 / 255 | 1800 / 70.9 |
| 120 / 264 | 120 / 264 | 120 / 264 | 120 / 264 | 120 / 264 | 120 / 264 | 120 / 264 | 120 / 264 | 120 / 264 | 117 / 257 | 1750 / 68.9 |
| 120 / 264 | 120 / 264 | 120 / 264 | 120 / 264 | 120 / 264 | 120 / 264 | 120 / 264 | 118 / 260 | 114 / 251 | 109 / 240 | 1700 / 66.9 |
| 120 / 264 | 120 / 264 | 120 / 264 | 120 / 264 | 120 / 264 | 120 / 264 | 120 / 264 | 120 / 264 | 115 / 253 | 110 / 242 | 1650 / 65.0 |
| 120 / 264 | 120 / 264 | 120 / 264 | 120 / 264 | 120 / 264 | 120 / 264 | 116 / 255 | 111 / 244 | 107 / 235 | 103 / 227 | 1600 / 63.0 |
| 120 / 264 | 120 / 264 | 120 / 264 | 120 / 264 | 118 / 260 | 113 / 249 | 108 / 238 | 104 / 229 | 100 / 220 | 96 / 211 | 1550 / 61.0 |
| 120 / 264 | 120 / 264 | 120 / 264 | 114 / 251 | 109 / 240 | 104 / 229 | 100 / 220 | 96 / 211 | 92 / 202 | 88 / 193 | 1435 / 56.5 |
| 900 / 35.4 | 950 / 37.4 | 1000 / 39.4 | 1050 / 41.3 | 1100 / 43.3 | 1150 / 45.3 | 1200 / 47.2 | 1250 / 49.2 | 1300 / 51.2 | | |

→ Door width in mm / inch

→ Hinge spacing in mm / inch

REFERENCE VALUE 160 KG / 352 lbs

- TE 640 3D A8
- TE 640 3D A8 Energy

| | | | | | | | | | | |
|------------|------------|-------------|-------------|-------------|-------------|-------------|-------------|-------------|-----------|--------------|
| 160 / 352 | 160 / 352 | 160 / 352 | 160 / 352 | 160 / 352 | 160 / 352 | 160 / 352 | 160 / 352 | 160 / 352 | 160 / 352 | >2000 / 78.7 |
| 160 / 352 | 160 / 352 | 160 / 352 | 160 / 352 | 160 / 352 | 160 / 352 | 160 / 352 | 160 / 352 | 160 / 352 | 160 / 352 | 2000 / 78.7 |
| 160 / 352 | 160 / 352 | 160 / 352 | 160 / 352 | 160 / 352 | 160 / 352 | 160 / 352 | 160 / 352 | 160 / 352 | 160 / 352 | 1950 / 76.8 |
| 160 / 352 | 160 / 352 | 160 / 352 | 160 / 352 | 160 / 352 | 160 / 352 | 160 / 352 | 160 / 352 | 160 / 352 | 160 / 352 | 1900 / 74.8 |
| 160 / 352 | 160 / 352 | 160 / 352 | 160 / 352 | 160 / 352 | 160 / 352 | 160 / 352 | 160 / 352 | 160 / 352 | 159 / 350 | 1850 / 72.8 |
| 160 / 352 | 160 / 352 | 160 / 352 | 160 / 352 | 160 / 352 | 160 / 352 | 160 / 352 | 160 / 352 | 160 / 352 | 154 / 339 | 1800 / 70.9 |
| 160 / 352 | 160 / 352 | 160 / 352 | 160 / 352 | 160 / 352 | 160 / 352 | 160 / 352 | 160 / 352 | 156 / 343 | 150 / 330 | 1750 / 68.9 |
| 160 / 352 | 160 / 352 | 160 / 352 | 160 / 352 | 160 / 352 | 160 / 352 | 160 / 352 | 158 / 348 | 152 / 335 | 146 / 321 | 1700 / 66.9 |
| 160 / 352 | 160 / 352 | 160 / 352 | 160 / 352 | 160 / 352 | 160 / 352 | 160 / 352 | 153 / 337 | 147 / 324 | 142 / 313 | 1650 / 65.0 |
| 160 / 352 | 160 / 352 | 160 / 352 | 160 / 352 | 160 / 352 | 155 / 341 | 149 / 328 | 143 / 315 | 137 / 302 | 133 / 293 | 1600 / 63.0 |
| 160 / 352 | 160 / 352 | 160 / 352 | 160 / 352 | 157 / 346 | 150 / 330 | 144 / 317 | 138 / 304 | 133 / 293 | 128 / 282 | 1550 / 61.0 |
| 160 / 352 | 160 / 352 | 160 / 352 | 152 / 335 | 145 / 319 | 139 / 306 | 133 / 293 | 128 / 282 | 123 / 271 | 118 / 260 | 1435 / 56.5 |
| 900 / 35.4 | 950 / 37.4 | 1000 / 39.4 | 1050 / 41.3 | 1100 / 43.3 | 1150 / 45.3 | 1200 / 47.2 | 1250 / 49.2 | 1300 / 51.2 | | |

→ Door width in mm / inch

→ Hinge spacing in mm / inch

LOAD CAPACITIES

TECHNICAL INFORMATION

Overview of load values for hinges

| | | | | | | | | | | | | | | | |
|------------------------------|--------------|---------------------------|------------|-------------|-------------|-------------|-------------|-------------|-------------|-------------|-----------|-----------|-----------|-----------|-----------|
| → Hinge spacing in mm / inch | >2000 / 78.7 | 200 / 440 | 200 / 440 | 200 / 440 | 200 / 440 | 200 / 440 | 200 / 440 | 200 / 440 | 200 / 440 | 200 / 440 | 200 / 440 | 200 / 440 | 200 / 440 | 200 / 440 | |
| | 2000 / 78.7 | 200 / 440 | 200 / 440 | 200 / 440 | 200 / 440 | 200 / 440 | 200 / 440 | 200 / 440 | 200 / 440 | 200 / 440 | 200 / 440 | 200 / 440 | 200 / 440 | 200 / 440 | |
| | 1950 / 76.8 | 200 / 440 | 200 / 440 | 200 / 440 | 200 / 440 | 200 / 440 | 200 / 440 | 200 / 440 | 200 / 440 | 200 / 440 | 200 / 440 | 200 / 440 | 200 / 440 | 200 / 440 | |
| | 1900 / 74.8 | 200 / 440 | 200 / 440 | 200 / 440 | 200 / 440 | 200 / 440 | 200 / 440 | 200 / 440 | 200 / 440 | 200 / 440 | 200 / 440 | 200 / 440 | 200 / 440 | 200 / 440 | |
| | 1850 / 72.8 | 200 / 440 | 200 / 440 | 200 / 440 | 200 / 440 | 200 / 440 | 200 / 440 | 200 / 440 | 200 / 440 | 200 / 440 | 200 / 440 | 200 / 440 | 198 / 436 | | |
| | 1800 / 70.9 | 200 / 440 | 200 / 440 | 200 / 440 | 200 / 440 | 200 / 440 | 200 / 440 | 200 / 440 | 200 / 440 | 200 / 440 | 200 / 440 | 200 / 440 | 200 / 440 | 193 / 425 | |
| | 1750 / 68.9 | 200 / 440 | 200 / 440 | 200 / 440 | 200 / 440 | 200 / 440 | 200 / 440 | 200 / 440 | 200 / 440 | 200 / 440 | 200 / 440 | 195 / 429 | 188 / 414 | | |
| | 1700 / 66.9 | 200 / 440 | 200 / 440 | 200 / 440 | 200 / 440 | 200 / 440 | 200 / 440 | 200 / 440 | 200 / 440 | 200 / 440 | 197 / 434 | 190 / 418 | 182 / 401 | | |
| | 1650 / 65.0 | 200 / 440 | 200 / 440 | 200 / 440 | 200 / 440 | 200 / 440 | 200 / 440 | 200 / 440 | 200 / 440 | 200 / 440 | 192 / 423 | 184 / 405 | 177 / 390 | | |
| | 1600 / 63.0 | 200 / 440 | 200 / 440 | 200 / 440 | 200 / 440 | 200 / 440 | 200 / 440 | 200 / 440 | 200 / 440 | 200 / 440 | 194 / 427 | 186 / 410 | 178 / 392 | 172 / 379 | |
| | 1550 / 61.0 | 200 / 440 | 200 / 440 | 200 / 440 | 200 / 440 | 200 / 440 | 200 / 440 | 200 / 440 | 200 / 440 | 200 / 440 | 196 / 432 | 188 / 414 | 180 / 396 | 173 / 381 | 166 / 365 |
| | 1435 / 56.5 | 200 / 440 | 200 / 440 | 200 / 440 | 200 / 440 | 190 / 418 | 182 / 401 | 174 / 383 | 167 / 368 | 160 / 352 | 154 / 339 | | | | |
| | | 900 / 35.4 | 950 / 37.4 | 1000 / 39.4 | 1050 / 41.3 | 1100 / 43.3 | 1150 / 45.3 | 1200 / 47.2 | 1250 / 49.2 | 1300 / 51.2 | | | | | |
| | | → Door width in mm / inch | | | | | | | | | | | | | |

REFERENCE VALUE 200 KG / 440 lbs

TE 640 3D

TE 640 3D Energy

| | | | | | | | | | | | | | | | | |
|------------------------------|--------------|---------------------------|------------|-------------|-------------|-------------|-------------|-------------|-------------|-------------|-----------|-----------|-----------|-----------|-----------|-----------|
| → Hinge spacing in mm / inch | >2000 / 78.7 | 300 / 661 | 300 / 661 | 300 / 661 | 300 / 661 | 300 / 661 | 300 / 661 | 300 / 661 | 300 / 661 | 300 / 661 | 300 / 661 | 300 / 661 | 300 / 661 | 300 / 661 | | |
| | 2000 / 78.7 | 300 / 661 | 300 / 661 | 300 / 661 | 300 / 661 | 300 / 661 | 300 / 661 | 300 / 661 | 300 / 661 | 300 / 661 | 300 / 661 | 300 / 661 | 300 / 661 | 300 / 661 | | |
| | 1950 / 76.8 | 300 / 661 | 300 / 661 | 300 / 661 | 300 / 661 | 300 / 661 | 300 / 661 | 300 / 661 | 300 / 661 | 300 / 661 | 300 / 661 | 300 / 661 | 300 / 661 | 300 / 661 | | |
| | 1900 / 74.8 | 300 / 661 | 300 / 661 | 300 / 661 | 300 / 661 | 300 / 661 | 300 / 661 | 300 / 661 | 300 / 661 | 300 / 661 | 300 / 661 | 300 / 661 | 300 / 661 | 300 / 661 | | |
| | 1850 / 72.8 | 300 / 661 | 300 / 661 | 300 / 661 | 300 / 661 | 300 / 661 | 300 / 661 | 300 / 661 | 300 / 661 | 300 / 661 | 300 / 661 | 300 / 661 | 300 / 661 | 298 / 656 | | |
| | 1800 / 70.9 | 300 / 661 | 300 / 661 | 300 / 661 | 300 / 661 | 300 / 661 | 300 / 661 | 300 / 661 | 300 / 661 | 300 / 661 | 300 / 661 | 300 / 661 | 300 / 661 | 289 / 637 | | |
| | 1750 / 68.9 | 300 / 661 | 300 / 661 | 300 / 661 | 300 / 661 | 300 / 661 | 300 / 661 | 300 / 661 | 300 / 661 | 300 / 661 | 300 / 661 | 293 / 645 | 281 / 619 | | | |
| | 1700 / 66.9 | 300 / 661 | 300 / 661 | 300 / 661 | 300 / 661 | 300 / 661 | 300 / 661 | 300 / 661 | 300 / 661 | 300 / 661 | 300 / 661 | 296 / 652 | 284 / 626 | 273 / 601 | | |
| | 1650 / 65.0 | 300 / 661 | 300 / 661 | 300 / 661 | 300 / 661 | 300 / 661 | 300 / 661 | 300 / 661 | 300 / 661 | 300 / 661 | 300 / 661 | 287 / 632 | 276 / 608 | 265 / 584 | | |
| | 1600 / 63.0 | 300 / 661 | 300 / 661 | 300 / 661 | 300 / 661 | 300 / 661 | 300 / 661 | 300 / 661 | 300 / 661 | 300 / 661 | 300 / 661 | 291 / 641 | 279 / 615 | 268 / 590 | 257 / 566 | |
| | 1550 / 61.0 | 300 / 661 | 300 / 661 | 300 / 661 | 300 / 661 | 300 / 661 | 300 / 661 | 300 / 661 | 300 / 661 | 300 / 661 | 300 / 661 | 295 / 650 | 282 / 621 | 270 / 595 | 259 / 570 | 249 / 548 |
| | 1435 / 56.5 | 300 / 661 | 300 / 661 | 300 / 661 | 300 / 661 | 286 / 630 | 273 / 601 | 261 / 575 | 250 / 551 | 240 / 529 | 231 / 509 | | | | | |
| | | 900 / 35.4 | 950 / 37.4 | 1000 / 39.4 | 1050 / 41.3 | 1100 / 43.3 | 1150 / 45.3 | 1200 / 47.2 | 1250 / 49.2 | 1300 / 51.2 | | | | | | |
| | | → Door width in mm / inch | | | | | | | | | | | | | | |

REFERENCE VALUE 300 KG / 661 lbs

TE 645 3D

The specifications above are guidelines. Especially in the case of borderline load requirements, please contact us.

**POWDER
COATED
FINISHES***

070 traffic white
RAL 9016



107 matte deep black
RAL 9005



124 satin chrome look
F1



125 satin nickel look
F2



156 rustic umber

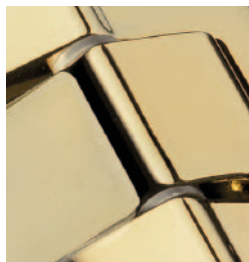


168 bronze metallic



**GALVANIC
PLATED
FINISHES***

030 polished brass



038 polished nickel



144 satin nickel

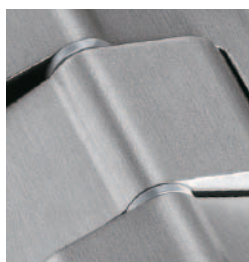


146 satin chrome



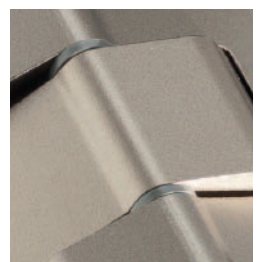
**BRUSHED
STAINLESS
STEEL**

040 satin stainless steel



**GALVANIC/
LIQUID
COATED
FINISHES***

126 stainless steel look
SSL



*The colors of the finishes shown may differ from the original.

our **PRODUCTSELECTOR** on
www.simonswerk.co.uk

TECTUS®

GB

Brochure TECTUS Concealed Hinges (Intern.)

02/2013

1.0

SIMONSWERK do not accept responsibility for misprints and subsequent specification changes although every effort has been made to avoid any errors during preparation of this brochure.

SIMONSWERK UK Ltd.

Burcot Works, Spring Street
Tipton, West Midland DY4 8TF
United Kingdom

Phone +44 (0) 121 522 2848

Fax +44 (0)121 557 7042

sales@simonswerk.co.uk

www.simonswerk.co.uk

