

Interroll Airport Solutions
Strong, Reliable and Effective



Anytime you travel through the busiest airports in the world, your baggage will come in contact with Interroll products.

Strong, reliable and effective **Interroll products and solutions** help airports all over the world stay on top of their game.

The world is constantly in motion. Economies grow; people are always moving and so is their baggage.

According to an Oxford Economics report, global travel spending will increase 5.4 percent a year for the next decade and the global commercial airports baggage handling systems market will grow at a CAGR of 7.43 percent over the period 2012-2016.

Despite rapid technological advancements in the equipment that handles all this traffic, the rising cost of airport operations will pose a challenge to the growth of this market.

Airport professionals can rely on Interroll: We have the right products and expertise to optimize their baggage handling operations while keeping costs under control.

Interroll products can be found at airports all over the world: Whether you're looking at **check-in counters, baggage handling or security screening systems**, you will find Interroll at the heart of airports' logistics operations. The vast majority of the world's busiest airports—including New York, Los Angeles, London, Milan, Dubai, Beijing and Singapore, to name just a few—are quipped with cutting-edge Interroll solutions.

As a global provider of core products for internal logistics, Interroll provides the sector-specific expertise and the experience of countless applications airports need to thrive.

Our solutions

SECURITY CHECKPOINTS AND SCREENING AREAS

Quiet and energy-efficient drives and rollers

[Learn more on page 4](#)

CHECK-IN COUNTERS

Quiet, space saving and cost-effective drum motors

[Learn more on page 6](#)

BAGGAGE HANDLING

Interroll Portec Belt Curves and Merges: the most reliable products for baggage handling!

[Learn more on page 8](#)



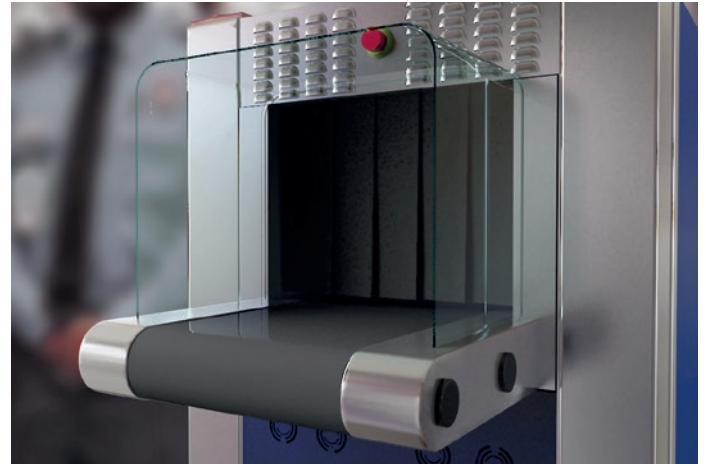
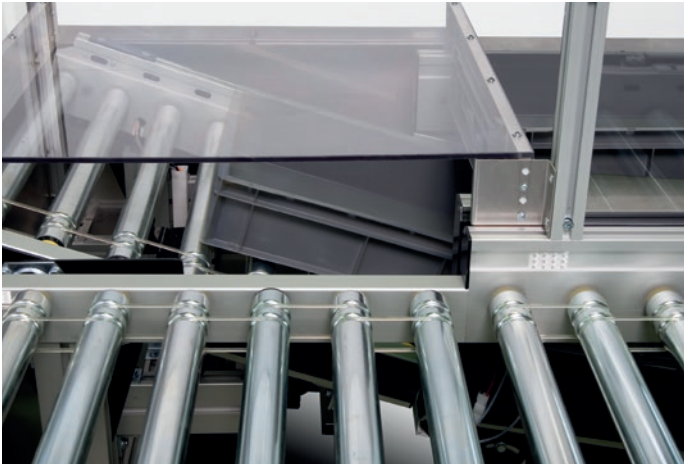
**Always on the
safe side with Interroll**

Rollers: technical Data

| | |
|---------------|--|
| Tube diameter | 1.12", 1.9" or 2.5" 30mm and 50mm |
| Tube material | PVC, stainless steel and zinc plated steel |
| Max. load | 45 lbs 120 N |
| Max. speed | 50 ft/min 0.8 m/sec |

EC310 RollerDrive: technical Data

| | |
|----------------------|---------------|
| Diameter | 1.9" 50mm |
| Nominal voltage | 22-26 V DC |
| No load current | 0.4 A |
| Rated current | 2.0 A |
| Maximum peak current | 5.0 A |
| Rated power | 32 W |
| Noise level | 55 dB(A) |
| Protection Rating | IP54 and IP66 |



Security checkpoints and screening areas

Interroll offers a wide array of products.

Interroll **Conveyor Rollers** for high-precision movement of full totes, empty totes or hand baggage. These high-quality products combine great economy and consistent best-in-class performance for conveying, storing, connecting, and inward or outward transfer. Gravity- or friction-driven, they come in all shapes and sizes; whether you need accumulation conveyors or conical conveyor rollers, this Interroll classic is designed for efficient, flawless material flow.

Interroll **RollerDrive** for smooth, decentralized conveying of boxes, packages and totes. The 24-volt RollerDrive is driven when there are goods that need to be transported in the respective zone. This is not only much more efficient (up to 50 percent energy savings), but also quieter. Furthermore, due to the lower wear and tear, maintenance needs to be performed less often.

Interroll **Drum Motors** for inward and outward transfer of items through baggage screening machines and check-in counters. Working in close cooperation with market leaders in the practical application of airport screening technology, Interroll equips these systems with quiet, reliable and efficient drum motors in more than 80 percent of the airports worldwide.

(See pages 6-7 for more technical details.)

THE BENEFITS

- HIGH-QUALITY PRODUCT
- SMOOTH SURFACES FOR FLAWLESS CONVEYING
- WIDE RANGE OF APPLICATIONS

THE BENEFITS

- LOW TOTAL COST OF OWNERSHIP
- LOW ENERGY CONSUMPTION
- FASTER INSTALLATION TIME
- LOW MAINTENANCE

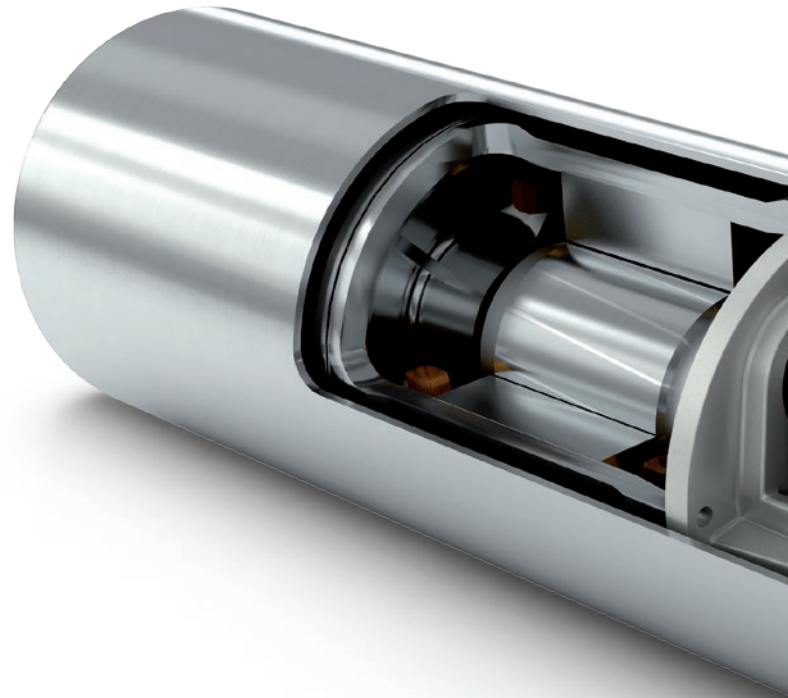
THE BENEFITS

- SPACE-SAVING DESIGN
- ENERGY EFFICIENT
- EASY AND FAST INSTALLATION
- EXTREMELY LOW MAINTENANCE

Check-in counters

The **Interroll Drum Motor** is a belt drive that combines maximum power and top performance without attracting attention to itself: Noise levels are extremely low, thanks to the fact that the Interroll drive unit is fully encapsulated and sealed.

Unlike traditional gear motors which are complicated and time consuming to install, the single component construction of the Interroll Drum Motor makes installation easy. This results in great time savings! What's more, its optimal dimensions make it ideal for every check-in conveyor. The extra space allows the installation of more check-in desks.



Technical data

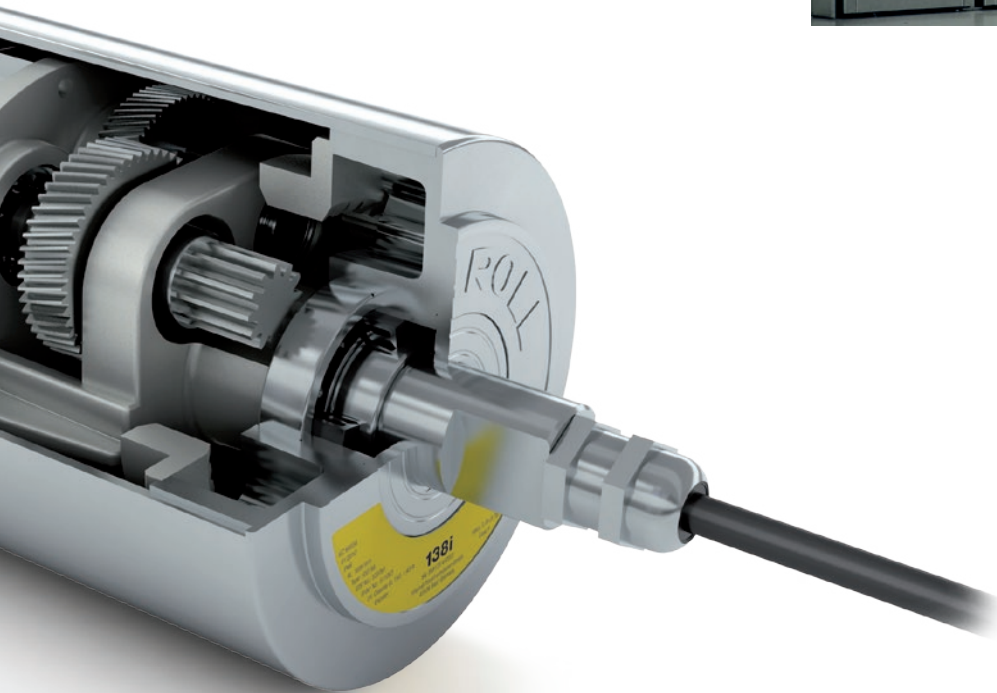
| Electrical data | |
|-----------------------------------|--|
| Motot type | Asynchronous squirrel cage motor, IEC 34 (VDE 0530) |
| Insulation class of motor winding | Class F, IEC 34 (VDE 0530) |
| Voltage | 3x230/400V or 3x 230/460V +5% (IEC 34/38) 1x230V or 1x 110V +5% (IEC 34/38) |
| Frequency | 50/60 Hz |
| Internal shaft sealing system | Double-lipped, FPM |
| Protection rate | IP65 |
| Thermal protection | Bi-metal switch |
| Operation mode | S1 |
| Ambient temperature | +10° to +40° C (+50° to +104° F) |
| General technical data | |
| Max. shell length SL | 1,400 mm (55.118 in) |

Material versions

| Component |
|----------------------|
| Shell |
| End housing |
| Shaft cap |
| Shaft |
| Electrical connector |

THE BENEFITS

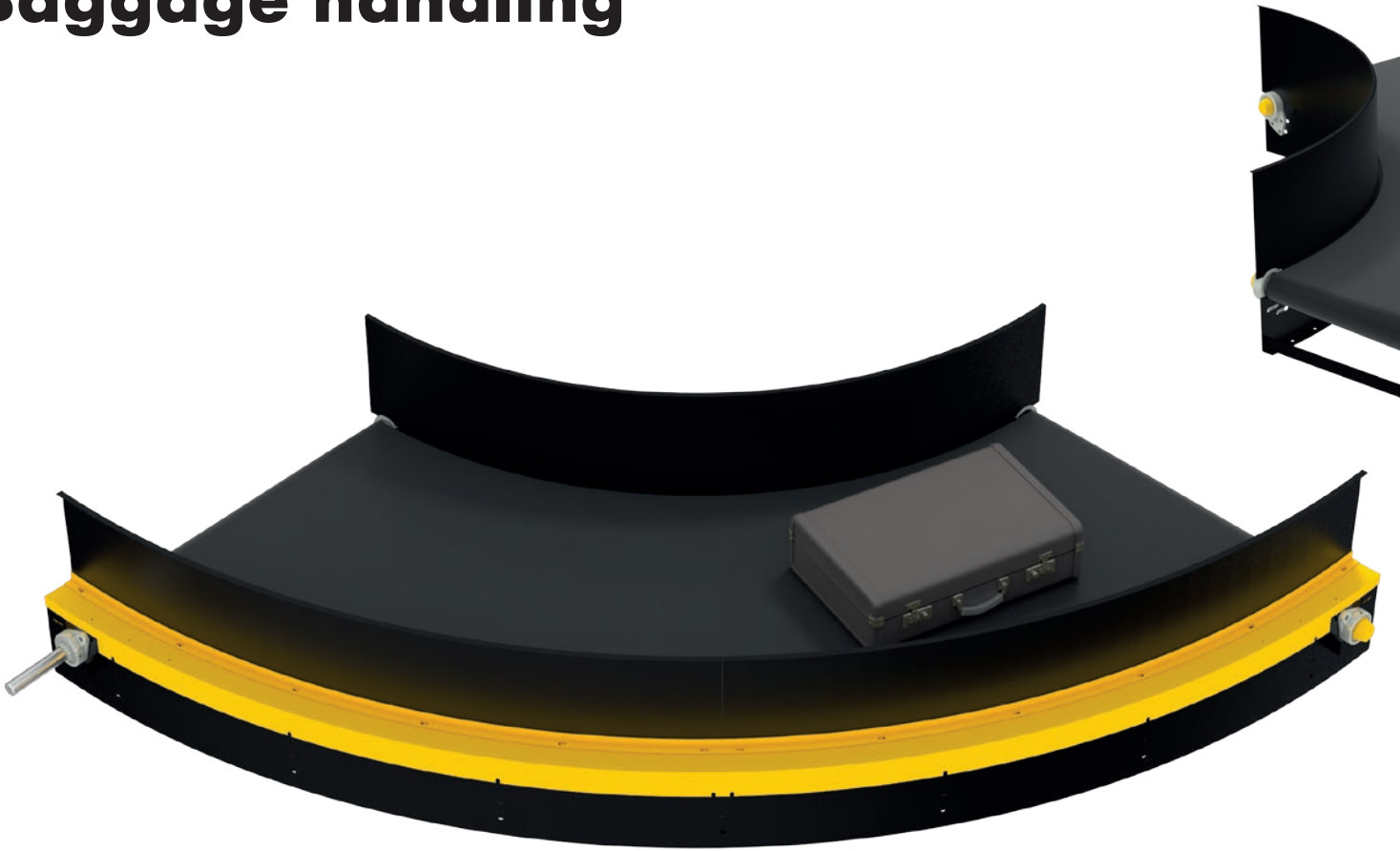
- STEEL HARDENED PLANETARY GEAR MAKES IT SUPER DURABLE.
- LOW NOISE (45-50 dBA)
- MAINTENANCE FREE FOR LOWER DOWNTIME AND OPERATING COSTS
- REVERSIBLE FOR MAXIMUM FLEXIBILITY



You can choose the following versions of drum body components and electrical connections. The versions depend on the material of the components.

| Version | Aluminium | Mild Steel | Brass/Nickel | Technopolymer | Polyurethane |
|----------------------|-----------|------------|--------------|---------------|--------------|
| Crowned/ cylindrical | | ✓ | | | |
| Standard | ✓ | | | | |
| Standard | ✓ | | | | |
| Standard | | ✓ | | | |
| Straight connector | | | ✓ | | |
| Straight PU plug | | | | | ✓ |
| Elbow connector | | | | ✓ | |
| Terminal box | ✓ | | | | |

Baggage handling



The **Interroll Portec Belt Curve** has been specifically designed to provide trouble-free performance for many years in a variety of applications.

With speed and accuracy being the key factors in this game, the positive drive technology that equips our belt curve ensures there is no slippage, therefore bag tracking is always accurate.

The design accommodates many variations in width, arc, and weight conveyance. The laced belt can be changed within a very short time and does not require the removal of the drive package.

The Interroll Portec Belt Curve can operate in much higher and lower ambient temperatures than a friction-driven conveyor and reaches speeds of more than three meters per second (600+ feet/minute).

Belt replacements do **not** require major disassembly of the curve.

If you are looking for **high speed, custom design** and **wide conveying widths**, look no further: Interroll Portec Belt Curve is simply the best solution for baggage handling in airports the world over.



THE BENEFITS

- RELIABLE ALWAYS, ANYWHERE
- PROVEN TECHNOLOGY
- HIGH SPEED
- POSITIVE DRIVE TECHNOLOGY
- LOW TOTAL COST OF OWNERSHIP

Technical data

SG (Sigma)

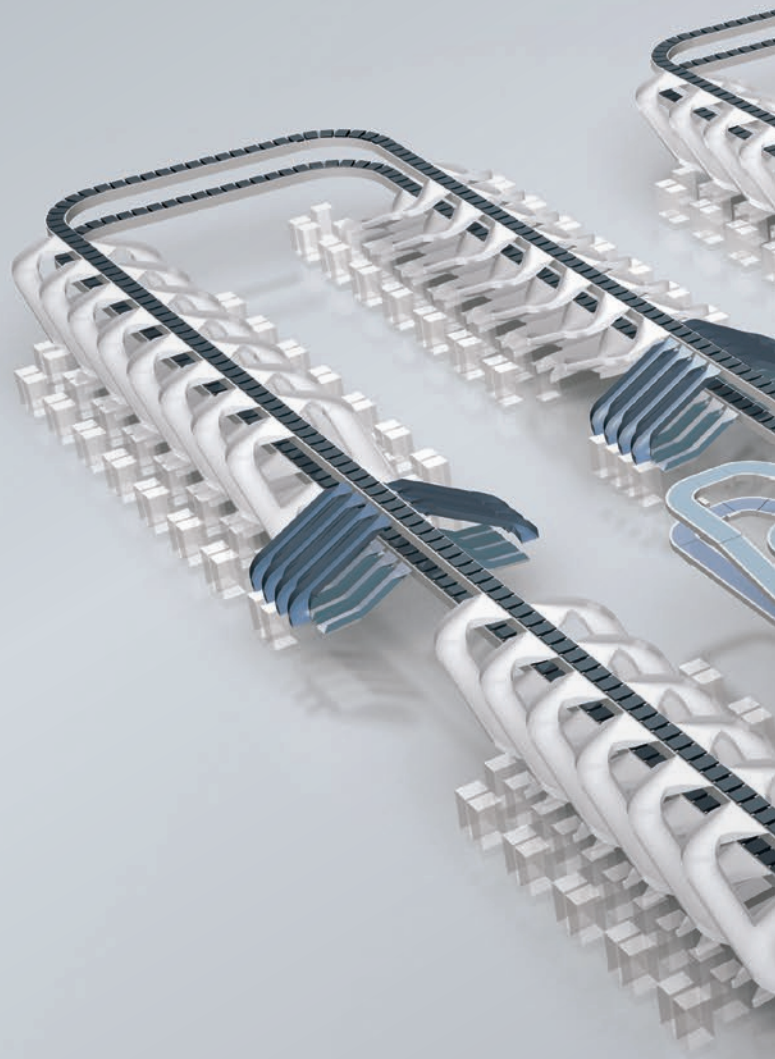
| General technical data | |
|-------------------------|--|
| Max. load capacity | 50 lbs./ft. 75 kg/m w/o Bedrolls 5 lbs./ft. 110 kg/m w/ Single bedrolls 150 lbs./ft. 225 kg/m w/ Double bedrolls |
| Max. conveyor load | 500 lbs. 225 kg OCR ≤ 87" 2200 mm |
| Conveyor speed at CL | 0 – 400 fpm 0 – 2 m/s |
| Inclined/declined | Angle dependent on OCR |
| Ambient temperature | 50 F – 1300 F 15° C – 55° C |
| Drive | |
| Rated voltage | 400V / 50HZ / 3 Phase 460V / 60 HZ / 3 Phase 110V / 220V / 60 HZ / 1 Phase |
| Electrical power | .5 HP - 5 HP .37 KW – 3.5 KW |
| End roll diameter at OR | 5 in 125 mm |
| Materials | |
| Conveyor belt STD | Flexam EF 10/2 0+A22 Black AS FR others upon request |
| Slider bed | 10 Gauge 3.5 mm steel |
| Frame | |
| Height | 8.5 in 215 mm |
| Material | 10 Gauge 3.5 mm steel |
| Side Guards | |
| Height | 2 in – 24 in 50 mm – 600 mm |
| Material | 14 Gauge 2.6 mm steel STD 12 Gauge 3 mm upon request |
| Dimensions | |
| Angle | 15 - 180 Degrees |
| Inner radius (IR) | Min: 17" 425 mm Max: 87" 2200 mm |
| LW clearance | Dependent on IR |
| TOB conveying height | Min: 8.5 in 215 mm |

Interroll solutions for global couriers

Moving goods across the globe as fast as possible is becoming more and more important to be competitive in today's world. An important role in airport logistics is played by global couriers like **UPS, TNT, FedEx and DHL**. All of these big, global companies make extensive use of air transport as a vital component of their business model and they all have large facilities near major airports.

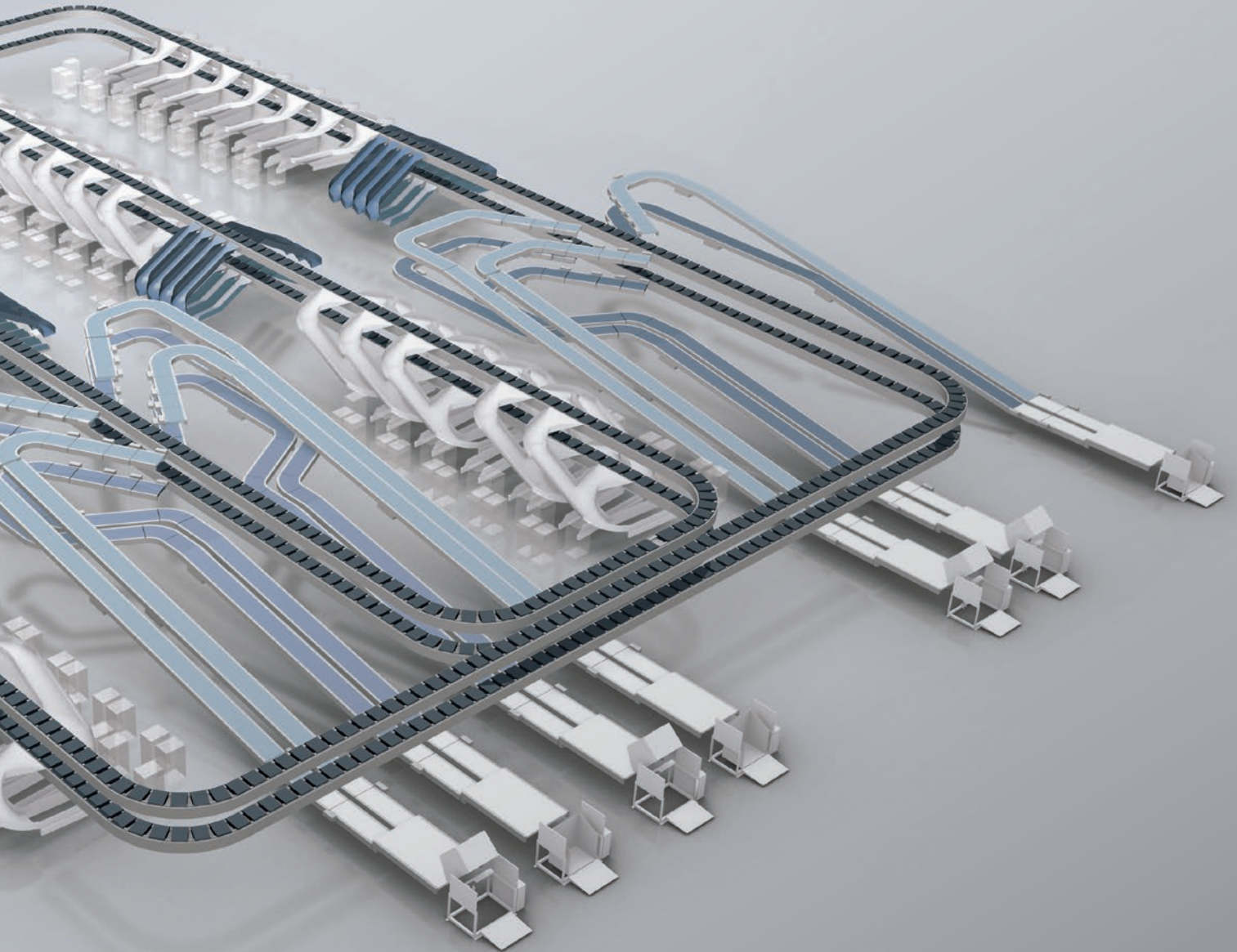
In this complex and demanding environment, Interroll helps them stay on top of their game: accurate sortation of a great variety of goods in growing volumes and less time is paramount.

The **Interroll Crossbelt Sorters** satisfy all of the prerequisites for these companies' success: **availability, flexibility and accuracy**. Our high-speed, cost-efficient solutions help them achieve outstanding performance, optimize costs and ultimately improve their productivity.



 THE BENEFITS

- HIGH THROUGHPUT
- DURABLE DESIGN
- FLEXIBLE AND SCALABLE
- SPACE SAVING



About Interroll

Established in 1959 Interroll has grown to become the world's leading supplier of key products for intralogistics. Whether boxes, pallets or soft goods are to be handled, no other supplier has such a comprehensive range of products on offer.

That is why system integrators, OEMs and operators select Interroll as their partner for their internal logistics business. Worldwide.

The Interroll global network ensures quick delivery and superior service for every local customer. We inspire our customers and provide opportunities for them to increase efficiency.

interroll.com

Interroll reserves the right to modify the technical features of its products at any time. Technical information, volumes, data and features are only rough guidelines.

© Interroll 2014

