

NEW ADDITIONS

Uniclass L74 735	EPIC K712
C/Sfb (62X) (63) X	

# Sheer CFX<sup>®</sup>

Exclusively designed  
Flat Plates with Concealed Fixing



**Hamilton** making connections beautifully...

NEW ADDITIONS

# Sheer CFX®



**Other products available from the Hamilton Group**

- Linea-CFX Concealed Fixing Collection
- Grid-It Grid Fix Accessories
- Hartland CFX Concealed Fixing
- Hartland Range (Box Fix)
- Sheer Range (Box Fix)
- Cheriton Range (Box Fix)
- Woods & Bloomsbury Range
- Digital Mercury Lighting Controls
- Data and Media Range (Data & Communication Outlets)
- IP Weatherproof Switches and Sockets
- Sheer Floor Sockets
- Hotel Card Switch
- Luxury Door Handles

*All products listed conform to current British or European standards and the product information is correct at the time of going to press.*

*It is the policy of the company to improve products as part of our development programme. Therefore, we reserve the right to alter designs and dimensions without prior notice.*

*Illustrations and diagrams are reproduced within the limitations of reproduction and printing process and are not binding.*

*Due to manufacturing processes we cannot guarantee an exact colour match and shadings of certain finishes.*

## Hamilton



BS EN ISO 9001:2000  
CERT NO. FM11238

For further information please contact:  
R. Hamilton & Co. Ltd., Quarry Industrial Estate, Mere, Wiltshire BA12 6LA, UK  
Telephone: +44 (0)1747 860088 Facsimile: +44 (0)1747 861032  
email: [info@hamilton-litestat.com](mailto:info@hamilton-litestat.com) [www.hamilton-litestat.com](http://www.hamilton-litestat.com)



## exclusive design...

Of minimal depth and contemporary appearance, the all NEW Sheer CFX lends lustre to its surroundings. Patent CFX\* concealed fixing system, affords seamless styling and sophistication.

## exclusive finishes...

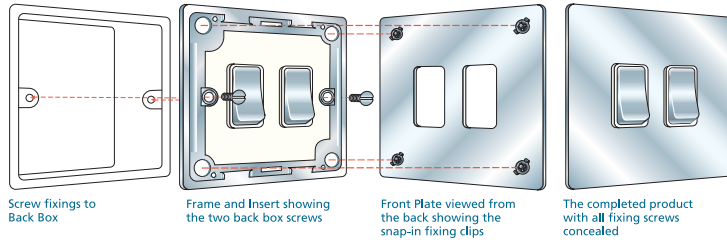
The finest materials and production standards are employed to produce a fashion conscious flat plate in a choice of six superb finishes.

## exclusive choice...

The comprehensive range of accessories gives a limitless choice in meeting any project constraints a designer may be working to.








Hamilton Sheer CFX® Concealed Fixing



Description

Description		Nominal Plate Size mm	Min. Wall Box Depth mm	
<b>Rocker Switches</b> 		1 gang 2 Way 10AX Rocker 2 gang 2 Way 10AX Rocker 3 gang 2 Way 10AX Rocker 4 gang 2 Way 10AX Rocker 6 gang 2 Way 10AX Rocker 1 gang Intermediate 10AX Rocker 2 gang Intermediate 10AX Rocker 1 gang 2 Way 10AX PTM Retractive Rocker 1 gang 10AX Triple Pole Rocker 1 gang 2 Way 20AX Rocker 2 gang 2 Way 20AX Rocker 3 gang 2 Way 20AX Rocker 4 gang 2 Way 20AX Rocker 1 gang Intermediate 20AX Rocker 2 gang Intermediate 20AX Rocker	86 x 86 86 x 86 86 x 86 145 x 86 145 x 86 86 x 86 86 x 86 86 x 86 86 x 86 86 x 86 86 x 86 145 x 86 145 x 86 86 x 86 86 x 86	25 25 25 25 25 25 25 25 25 25 25 25 25 25 25
<b>Dolly Switches</b> 		1 gang 2 Way 20AX Dolly 2 gang 2 Way 20AX Dolly 3 gang 2 Way 20AX Dolly 4 gang 2 Way 20AX Dolly 1 gang 20AX Intermediate Dolly	86 x 86 86 x 86 145 x 86 145 x 86 86 x 86	35 35 35 35 35
<b>Key Switch</b> 		1 gang 2 Way 20AX Key Switch 1 gang 2 Way 20AX Key Switch Printed "EMG LTG TEST"	86 x 86 86 x 86	25 25
<b>NEW Hotel Card Switch with LED</b> Adjustable Time Delay 10 secs – 5 mins. Suitable for 44 mm and 54 mm width Hotel Key Cards.		1 gang On/Off 10A (6AX) with Blue LED Locator 1 gang On/Off 12–24V AC/DC +/- 10% with Blue LED Locator - Suitable for KNX BUS System	86 x 86 86 x 86	35 35
<b>Sockets</b> 		1 gang 13A Double Pole Switched Socket 2 gang 13A Double Pole Switched Socket 1 gang 2A Double Pole Unswitched Socket 1 gang 5A Double Pole Unswitched Socket 1 gang 13A Double Pole Unswitched Socket 2 gang 13A Double Pole Unswitched Socket Shaver Socket (Dual Voltage)	86 x 86 145 x 86 86 x 86 86 x 86 86 x 86 145 x 86 86 x 145	35 35 35 35 35 35 47
<b>Television Coaxial Sockets</b> 		1 gang Non Isolated Television 1in/1out 2 gang Isolated TV/FM 1in/2 out 1 gang Isolated Television 1 in/1 out 1 gang TV + 1 gang Satellite 1 gang Non Isolated Satellite 1 gang Isolated Satellite	86 x 86 86 x 86 86 x 86 86 x 86 86 x 86 86 x 86	25 25 25 35 35 35
<b>Digital Television Sockets - Screened Non Isolated</b> 		1 gang TV + 1 gang FM + 1 gang Satellite (DAB compatible) 1 gang TV + 1 gang Satellite 1 + 1 gang Satellite 2 + 1 gang FM + 1 gang TCS + 1 gang TVF (DAB compatible) 1 gang TV + 1 gang Satellite 1 + 1 gang Satellite 2 + 1 gang FM (DAB compatible) 1 gang TV (Female) 1 gang TV (Male) 1 gang Satellite 'F' Type	86 x 86 145 x 86 86 x 86 86 x 86 86 x 86 86 x 86	35 35 35 35 35 35
<b>Telephone &amp; Data Outlets</b> 		1 gang Telephone Master 1 gang Telephone Slave 1 gang RJ12 Outlet - Unshielded 2 gang RJ12 Outlet - Unshielded 1 gang RJ45 Outlet CAT 5E - Unshielded 2 gang RJ45 Outlet CAT 5E - Unshielded	86 x 86 86 x 86 86 x 86 86 x 86 86 x 86 86 x 86	25 25 35 35 35 35
<b>Double Pole Switches</b> 		1 gang 20A Double Pole Rocker + Neon 1 gang 45A Double Pole Red Rocker + Neon 1 gang 45A Double Pole Red Rocker + Neon + 13A Switched Socket	86 x 86 86 x 86 145 x 86	25 35 35
<b>Connection Units</b> 		1 gang 13A Fused Spur, Double Pole + Neon 1 gang 13A Fuse + Red Neon Halo	86 x 86 86 x 86	35 35
<b>Push On/Off Resistive Dimmers</b> 		1 gang 2 way 400W 2 gang 2 way 400W 3 gang 2 way 400W 4 gang 2 way 300W (Max. wattage per gang 300 watts) 1 gang 2 way 600W 1 gang 2 way 1000W	86 x 86 86 x 86 145 x 86 145 x 86 86 x 86 145 x 86	35 35 35 35 35 35
<b>Push On/Off Inductive Dimmers</b> 		1 gang 2 way 200VA 1 gang 2 way 300VA	86 x 86 86 x 86	35 35
<b>Trailing Edge Push On/Off Dimmers</b> 		1 gang Multi-way 250W/VA (250W/VA Max. 25W/VA Min.) 2 gang Multi-way 250W/VA (250W/VA Max. 25W/VA Min.) 3 gang Multi-way 250W/VA (250W/VA Max. 25W/VA Min.) 4 gang Multi-way 250W/VA (250W/VA Max. 25W/VA Min.)	88 x 88 88 x 88 146 x 86 146 x 86	35 35 35 35
<b>Trailing Edge Touch Master Multi-way Dimmers</b> 		1 gang Multi-way 250W/VA (250W/VA Max. 25W/VA Min.) 2 gang Multi-way 250W/VA (250W/VA Max. 25W/VA Min.) 3 gang Multi-way 250W/VA (250W/VA Max. 25W/VA Min.) 4 gang Multi-way 250W/VA (250W/VA Max. 25W/VA Min.)	88 x 88 88 x 88 146 x 86 146 x 86	35 35 35 35
<b>Touch Slave Controllers</b> 		1 gang Multi-way 2 gang Multi-way 3 gang Multi-way 4 gang Multi-way	88 x 88 88 x 88 146 x 86 146 x 86	35 35 35 35
<b>Blanking Plates</b> 		Single Blank Plate Double Blank Plate	86 x 86 145 x 86	35 35

British Standard	Bright Chrome		Polished Brass		Satin
	Bright Chrome/ White Inserts	Bright Chrome/ Black Inserts	Polished Brass/ Black Inserts	Polished Brass/ White Inserts	
					
	Order Code	Order Code	Order Code	Order Code	Order Code
BS EN 60669-1 BS EN 60669-1 BS EN 60669-1 BS EN 60669-1 BS EN 60669-1 BS EN 60669-1 BS EN 60669-1 BS EN 60669-1 BS EN 60669-1 BS EN 60669-1 BS EN 60669-1 BS EN 60669-1 BS EN 60669-1 BS EN 60669-1 BS EN 60669-1	87C R21 BC/WH 87C R22 BC/WH 87C R23 BC/WH 87C R24 BC/WH 87C R26 BC/WH 87C R31 BC/WH 87C R32 BC/WH 87C BCP BC/WH 87C TP WH 87C R21/20 BC/WH 87C R22/20 BC/WH 87C R23/20 BC/WH 87C R24/20 BC/WH 87C R31/20 BC/WH 87C R32/20 BC/WH	87C R21 BC/BL 87C R22 BC/BL 87C R23 BC/BL 87C R24 BC/BL 87C R26 BC/BL 87C R31 BC/BL 87C R32 BC/BL 87C BCP BC/BL 87C TP BL 87C R21/20 BC/BL 87C R22/20 BC/BL 87C R23/20 BC/BL 87C R24/20 BC/BL 87C R31/20 BC/BL 87C R32/20 BC/BL	81C R21 PB/BL 81C R22 PB/BL 81C R23 PB/BL 81C R24 PB/BL 81C R26 PB/BL 81C R31 PB/BL 81C R32 PB/BL 81C BCP PB/BL 81C TP BL 81C R21/20 PB/BL 81C R22/20 PB/BL 81C R23/20 PB/BL 81C R24/20 PB/BL 81C R31/20 PB/BL 81C R32/20 PB/BL	81C R21 PB/WH 81C R22 PB/WH 81C R23 PB/WH 81C R24 PB/WH 81C R26 PB/WH 81C R31 PB/WH 81C R32 PB/WH 81C BCP PB/WH 81C TP WH 81C R21/20 PB/WH 81C R22/20 PB/WH 81C R23/20 PB/WH 81C R24/20 PB/WH 81C R31/20 PB/WH 81C R32/20 PB/WH	82C R21 SB/BL 82C R22 SB/BL 82C R23 SB/BL 82C R24 SB/BL 82C R26 SB/BL 82C R31 SB/BL 82C R32 SB/BL 82C BCP SB/BL 82C TP BL 82C R21/20 SB/BL 82C R22/20 SB/BL 82C R23/20 SB/BL 82C R24/20 SB/BL 82C R31/20 SB/BL 82C R32/20 SB/BL
BS EN 60669-1 BS EN 60669-1 BS EN 60669-1 BS EN 60669-1 BS EN 60669-1		87C S21 87C S22 87C S23 87C S24 87C S31		81C S21 81C S22 81C S23 81C S24 81C S31	82C S21 82C S22 82C S23 82C S24 82C S31
BS EN 60669-1 BS EN 60669-1	87C K21 WH 87C K21ELT WH	87C K21 BL 87C K21ELT BL	81C K21 BL 81C K21ELT BL	81C K21 WH 81C K21ELT WH	82C K21 BL 82C K21ELT BL
BS EN 60669-2-3 BS EN 60669-2-3	87C C11 BC/WH 87C C11KNX BC/WH	87C C11 BC/BL 87C C11KNX BC/BL	81C C11 PB/BL 81C C11KNX PB/BL	81C C11 PB/WH 81C C11KNX PB/WH	82C C11 SB/BL 82C C11KNX SB/BL
BS 1363 BS 1363 BS 546 BS 546 BS 1363 BS 1363 BS EN 61558-BS 4573	87C S51 BC/WH 87C S52 BC/WH 87C US2 WH 87C US5 WH 87C US13 WH 87C US99 WH 87C SHS WH	87C S51 BC/BL 87C S52 BC/BL 87C US2 BL 87C US5 BL 87C US13 BL 87C US99 BL 87C SHS BL	81C S51 PB/BL 81C S52 PB/BL 81C US2 BL 81C US5 BL 81C US13 BL 81C US99 BL 81C SHS BL	81C S51 PB/WH 81C S52 PB/WH 81C US2 WH 81C US5 WH 81C US13 WH 81C US99 WH 81C SHS WH	82C S51 SB/BL 82C S52 SB/BL 82C US2 BL 82C US5 BL 82C US13 BL 82C US99 BL 82C SHS BL
	87C TV WH 87C TVFM WH 87C TVI WH 87C TV+SAT WH 87C SAT WH 87C SATI WH	87C TV BL 87C TVFM BL 87C TVI BL 87C TV+SAT BL 87C SAT BL 87C SATI BL	81C TV BL 81C TVFM BL 81C TVI BL 81C TV+SAT BL 81C SAT BL 81C SATI BL	81C TV WH 81C TVFM WH 81C TVI WH 81C TV+SAT WH 81C SAT WH 81C C SATI WH	82C TV BL 82C TVFM BL 82C TVI BL 82C TV+SAT BL 82C SAT BL 82C SATI BL
	87C DGTRID WH 87C DGENT+TVF+TCS WH 87C DGENT WH 87C DGTVF WH 87C DGTVM WH 87C DGSAT WH	87C DGTRID BL 87C DGENT+TVF+TCS BL 87C DGENT BL 87C DGTVF BL 87C DGTVM BL 87C DGSAT BL	81C DGTRID BL 81C DGENT+TVF+TCS BL 81C DGENT BL 81C DGTVF BL 81C DGTVM BL 81C DGSAT BL	81C DGTRID WH 81C DGENT+TVF+TCS WH 81C DGENT WH 81C DGTVF WH 81C DGTVM WH 81C DGSAT WH	82C DGTRID BL 82C DGENT+TVF+TCS BL 82C DGENT BL 82C DGTVF BL 82C DGTVM BL 82C DGSAT BL
	87C TCM WH 87C TCS WH 87C RJ12 WH 87C RJ12/2 WH 87C RJ45 WH 87C RJ45/2 WH	87C TCM BL 87C TCS BL 87C RJ12 BL 87C RJ12/2 BL 87C RJ45 BL 87C RJ45/2 BL	81C TCM BL 81C TCS BL 81C RJ12 BL 81C RJ12/2 BL 81C RJ45 BL 81C RJ45/2 BL	81CTCM WH 81C TCS WH 81C RJ12 WH 81C RJ12/2 WH 81C RJ45 WH 81C RJ45/2 WH	82C TCM BL 82C TCS BL 82C RJ12 BL 82C RJ12/2 BL 82C RJ45 BL 82C RJ45/2 BL
BS EN 60669-1 BS EN 60669-1 BS 4177	87C DPN BC/WH 87C 45DPN WH 87C 45DPNSS1 BC/WH	87C DPN BC/BL 87C 45DPN BL 87C 45DPNSS1 BC/BL	81C DPN PB/BL 81C 45DPN BL 81C 45DPNSS1 PB/BL	81C DPN PB/WH 81C 45DPN WH 81C 45DPNSS1 PB/WH	82C DPN SB/BL 82C 45DPN BL 82C 45DPNSS1 SB/BL
BS 1363 BS 5733 Supplied with fuse link to BS 1362	87C SPN BC/WH	87C SPN BC/BL 87C FN BC	81C SPN PB/BL	81C SPN PB/WH 81C FN PB	82C SPN SB/BL 82C FN SB
BS EN 60669-2-1 BS EN 60669-2-1 BS EN 60669-2-1 BS EN 60669-2-1 BS 5518		87C P1X400 87C P2X400 87C P3X400 87C P4X400 87C P1X600 87C P1X1000		81C P1X400 81C P2X400 81C P3X400 81C P4X400 81C P1X600 81C P1X1000	82C P1X400 82C P2X400 82C P3X400 82C P4X400 82C P1X600 82C P1X1000
BS 5518 BS 5518		87C P1X200VA 87C P1X300VA		81C P1X200VA 81C P1X300VA	82C P1X200VA 82C P1X300VA
BS EN 60669-2-1 BS EN 60669-2-1 BS EN 60669-2-1 BS EN 60669-2-1		87C P1XTE25 87C P2XTE25 87C P3XTE25 87C P4XTE25		81C P1XTE25 81C P2XTE25 81C P3XTE25 81C P4XTE25	82C P1XTE25 82C P2XTE25 82C P3XTE25 82C P4XTE25
BS EN 60669-2-1 BS EN 60669-2-1 BS EN 60669-2-1 BS EN 60669-2-1	87C 1XTM25 WH 87C 2XTM25 WH 87C 3XTM25 WH 87C 4XTM25 WH	87C 1XTM25 BL 87C 2XTM25 BL 87C 3XTM25 BL 87C 4XTM25 BL	81C 1XTM25 BL 81C 2XTM25 BL 81C 3XTM25 BL 81C 4XTM25 BL	81C 1XTM25 WH 81C 2XTM25 WH 81C 3XTM25 WH 81C 4XTM25 WH	82C 1XTM25 BL 82C 2XTM25 BL 82C 3XTM25 BL 82C 4XTM25 BL
BS EN 60669-2-1 BS EN 60669-2-1 BS EN 60669-2-1 BS EN 60669-2-1	87C 1XTS WH 87C 2XTS WH 87C 3XTS WH 87C 4XTS WH	87C 1XTS BL 87C 2XTS BL 87C 3XTS BL 87C 4XTS BL	81C 1XTS BL 81C 2XTS BL 81C 3XTS BL 81C 4XTS BL	81C 1XTS WH 81C 2XTS WH 81C 3XTS WH 81C 4XTS WH	82C 1XTS BL 82C 2XTS BL 82C 3XTS BL 82C 4XTS BL
		87C BPS 87C BPD		81C BPS 81C BPD	82C BPS 82C BPD

<b>Brass</b> Satin Brass/ White Inserts 	<b>Antique Brass</b> Antique Brass/ Black Inserts 	<b>Satin Stainless Finish</b> Satin Stainless Finish/ White Inserts     Satin Stainless Finish/ Black Inserts  		<b>Black Nickel</b> Black Nickel/ Black Inserts 
Order Code	Order Code	Order Code	Order Code	Order Code
82C R21 SB/WH 82C R22 SB/WH 82C R23 SB/WH 82C R24 SB/WH 82C R26 SB/WH 82C R31 SB/WH 82C R32 SB/WH 82C BCP SB/WH 82C TP WH 82C R21/20 SB/WH 82C R22/20 SB/WH 82C R23/20 SB/WH 82C R24/20 SB/WH 82C R31/20 SB/WH 82C R32/20 SB/WH	89C R21 AB/BL 89C R22 AB/BL 89C R23 AB/BL 89C R24 AB/BL 89C R26 AB/BL 89C R31 AB/BL 89C R32 AB/BL 89C BCP AB/BL 89C TP BL 89C R21/20 AB/BL 89C R22/20 AB/BL 89C R23/20 AB/BL 89C R24/20 AB/BL 89C R31/20 AB/BL 89C R32/20 AB/BL	84C R21 SS/WH 84C R22 SS/WH 84C R23 SS/WH 84C R24 SS/WH 84C R26 SS/WH 84C R31 SS/WH 84C R32 SS/WH 84C BCP SS/WH 84C TP WH 84C R21/20 SS/WH 84C R22/20 SS/WH 84C R23/20 SS/WH 84C R24/20 SS/WH 84C R31/20 SS/WH 84C R32/20 SS/WH	84C R21 SS/BL 84C R22 SS/BL 84C R23 SS/BL 84C R24 SS/BL 84C R26 SS/BL 84C R31 SS/BL 84C R32 SS/BL 84C BCP SS/BL 84C TP BL 84C R21/20 SS/BL 84C R22/20 SS/BL 84C R23/20 SS/BL 84C R24/20 SS/BL 84C R31/20 SS/BL 84C R32/20 SS/BL	88C R21 BK/BL 88C R22 BK/BL 88C R23 BK/BL 88C R24 BK/BL 88C R26 BK/BL 88C R31 BK/BL 88C R32 BK/BL 88C BCP BK/BL 88C TP BL 88C R21/20 BK/BL 88C R22/20 BK/BL 88C R23/20 BK/BL 88C R24/20 BK/BL 88C R31/20 BK/BL 88C R32/20 BK/BL
21 22 23 24 31	89C S21 89C S22 89C S23 89C S24 89C S31		84C S21 84C S22 84C S23 84C S24 84C S31	88C S21 88C S22 88C S23 88C S24 88C S31
82C K21 WH 82C K21ELT WH	89C K21 BL 89C K21ELT BL	84C K21 WH 84C K21ELT WH	84C K21 BL 84C K21ELT BL	88C K21 BL 88C K21ELT BL
82C C11 SB/WH 82C C11KNX SB/WH	89C C11 AB/BL 89C C11KNX AB/BL	84C C11 SS/WH 84C C11KNX SS/WH	84C C11 SS/BL 84C C11KNX SS/BL	88C C11 BK/BL 88C C11KNX BK/BL
82C S51 SB/WH 82C S52 SB/WH 82C U52 WH 82C U55 WH 82C U513 WH 82C U599 WH 82C SH5 WH	89C S51 AB/BL 89C S52 AB/BL 89C U52 BL 89C U55 BL 89C U513 BL 89C U599 BL 89C SH5 BL	84C S51 SS/WH 84C S52 SS/WH 84C U52 WH 84C U55 WH 84C U513 WH 84C U599 WH 84C SH5 WH	84C S51 SS/BL 84C S52 SS/BL 84C U52 BL 84C U55 BL 84C U513 BL 84C U599 BL 84C SH5 BL	88C S51 BK/BL 88C S52 BK/BL 88C U52 BL 88C U55 BL - - 88C SH5 BL
82C TV WH 82C TVFM WH 82C TVI WH 82C TV+SAT WH 82C SAT WH 82C SATI WH	89C TV BL 89C TVFM BL 89C TVI BL 89C TV+SAT BL 89C SAT BL 89C SATI BL	84C TV WH 84C TVFM WH 84C TVI WH 84C TV+SAT WH 84C SAT WH 84C SATI WH	84C TV BL 84C TVFM BL 84C TVI BL 84C TV+SAT BL 84C SAT BL 84C SATI BL	88C TV BL 88C TVFM BL 88C TVI BL 88C TV+SAT BL 88C SAT BL 88C SATI BL
82C DGTRID WH 82C DGENT+TVF+TCS WH 82C DGENT WH 82C DGTVF WH 82C DGTVM WH 82C DGSAT WH	89C DGTRID BL 89C DGENT+TVF+TCS BL 89C DGENT BL 89C DGTVF BL 89C DGTVM BL 89C DGSAT BL	84C DGTRID WH 84C DGENT+TVF+TCS WH 84C DGENT WH 84C DGTVF WH 84C DGTVM WH 84C DGSAT WH	84C DGTRID BL 84C DGENT+TVF+TCS BL 84C DGENT BL 84C DGTVF BL 84C DGTVM BL 84C DGSAT BL	88C DGTRID BL 88C DGENT+TVF+TCS BL 88C DGENT BL 88C DGTVF BL 88C DGTVM BL 88C DGSAT BL
82C TCM WH 82C TCS WH 82C RJ12 WH 82C RJ12/2 WH 82C RJ45 WH 82C RJ45/2 WH	89C TCM BL 89C TCS BL 89C RJ12 BL 89C RJ12/2 BL 89C RJ45 BL 89C RJ45/2 BL	84C TCM WH 84C TCS WH 84C RJ12 WH 84C RJ12/2 WH 84C RJ45 WH 84C RJ45/2 WH	84C TCM BL 84C TCS BL 84C RJ12 BL 84C RJ12/2 BL 84C RJ45 BL 84C RJ45/2 BL	88C TCM BL 88C TCS BL 88C RJ12 BL 88C RJ12/2 BL 88C RJ45 BL 88C RJ45/2 BL
82C DPN SB/WH 82C 45DPN WH 82C 45DPNSS1 SB/WH	89C DPN AB/BL 89C 45DPN BL 89C 45DPNSS1 AB/BL	84C DPN SS/WH 84C 45DPN WH 84C 45DPNSS1 SS/WH	84C DPN SS/BL 84C 45DPN BL 84C 45DPNSS1 SS/BL	88C DPN BK/BL 88C 45DPN BL 88C 45DPNSS1 BK/BL
82C SPN SB/WH N SB	89C SPN AB/BL 89C FN AB	84C SPN SS/WH	84C SPN SS/BL 84C FN SS	88C SPN BK/BL 88C FN BK
*1X400 *2X400 *3X400 *4X400 *1X600 *1X1000	89C P1X400 89C P2X400 89C P3X400 89C P4X400 89C P1X600 89C P1X1000		84C P1X400 84C P2X400 84C P3X400 84C P4X400 84C P1X600 84C P1X1000	88C P1X400 88C P2X400 88C P3X400 88C P4X400 88C P1X600 88C P1X1000
*1X200VA *1X300VA	89C P1X200VA 89C P1X300VA		84C P1X200VA 84C P1X300VA	88C P1X200VA 88C P1X300VA
*1XTE25 *2XTE25 *3XTE25 *4XTE25	89C P1XTE25 89C P2XTE25 89C P3XTE25 89C P4XTE25		84C P1XTE25 84C P2XTE25 84C P3XTE25 84C P4XTE25	88C P1XTE25 88C P2XTE25 88C P3XTE25 88C P4XTE25
82C 1XTM25 WH 82C 2XTM25 WH 82C 3XTM25 WH 82C 4XTM25 WH	89C 1XTM25 BL 89C 2XTM25 BL 89C 3XTM25 BL 89C 4XTM25 BL	84C 1XTM25 WH 84C 2XTM25 WH 84C 3XTM25 WH 84C 4XTM25 WH	84C 1XTM25 BL 84C 2XTM25 BL 84C 3XTM25 BL 84C 4XTM25 BL	88C 1XTM25 BL 88C 2XTM25 BL 88C 3XTM25 BL 88C 4XTM25 BL
82C 1XTS WH 82C 2XTS WH 82C 3XTS WH 82C 4XTS WH	89C 1XTS BL 89C 2XTS BL 89C 3XTS BL 89C 4XTS BL	84C 1XTS WH 84C 2XTS WH 84C 3XTS WH 84C 4XTS WH	84C 1XTS BL 84C 2XTS BL 84C 3XTS BL 84C 4XTS BL	88C 1XTM25 BL 88C 2XTM25 BL 88C 3XTM25 BL 88C 4XTM25 BL
BPS BPD	89C BPS 89C BPD		84C BPS 84C BPD	88C BPS 88C BPD