

// The optimum solution for fitting in solid walls and partition walls



Steel Frames

A comprehensive, "high-profile" programme





Hörmann frames in steel and stainless steel Quality you can build on



A high quality standard

Hörmann steel frames are manufactured using ultra-modern production facilities and state-of-the-art technology in line with the quality assurance system DIN ISO 9001. They are also RAL quality tested.

A qualified workforce

A well trained and motivated workforce guarantees a consistently high product quality. That's why Hörmann places great emphasis on a competent, quality-conscious workforce: from development through precision manufacture to final quality control.



Whether for an extension, conversion or redesignation, the frame equipment remains harmonious thanks to Hörmann's 10-year guaranteed availability.



Information for planners



Your aesthetic standard is our measure

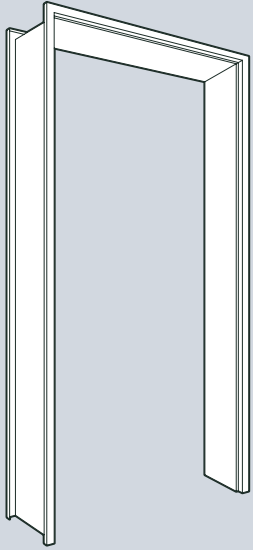
It isn't just the perfect function that makes steel frames so convincing, their appearance must do justice to the architectural design too. Hörmann steel frames are available with a high-grade, adhesive primer in Light grey (similar to RAL 7035) as well as in a wide range of special factory colours.



From technical clarification, through documentation to on-time delivery, you know you're in safe hands with Hörmann. Experienced specialists assist you from the planning stage all the way up to the final building inspection.

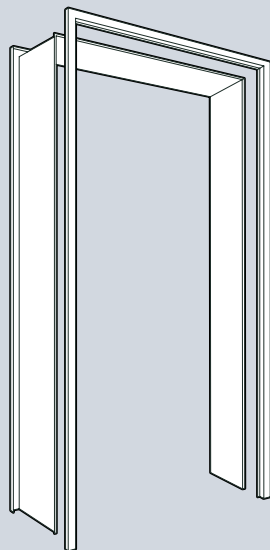
Frame types

Hörmann has the right frame for every fitting situation.



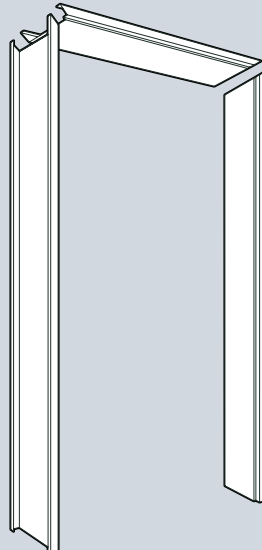
1-part frames

For solid walls and fitting in partition walls at the time of wall construction



2-shell frames

For refurbishing and retrofitting



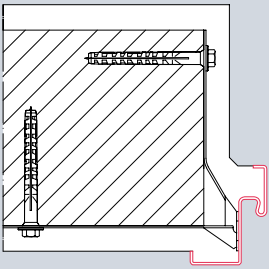
3-part frames

For simple clamp/screw fitting for retrofitting in partition walls

We make frames shape up to your individual requirements

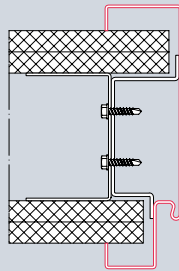
Standard frames

These especially inexpensive standard frames are available from stock in all the usual fitting sizes.



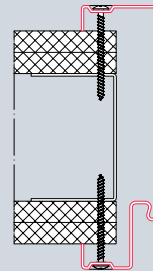
Corner frame DIN 18111 for brickwork

Profile 11100 also as a profile frame
Profile 21100



Profile frame for partition walls

Profile 21120



Profile knock-down frame for partition walls

Profile 21120 with screw fixing through the frame face

Fitting variants

Hörmann steel frames are suitable for fitting in:

- Brickwork
- Concrete
- Gas concrete
- Gypsum plasterboard
- Partition walls

The following frame surfaces are available:

- Galvanized and primed
- Powder-coated, RAL to choose
- Stainless steel (V2A, V4A)



Sound-absorbing seal for quiet and tight closing

The high-grade, flexible hollow-chamber sound-absorbing seals are easy to insert. They ensure that doors close snugly with hardly a sound.



UPVC sound-absorbing seal (Standard)



EPDM sound-absorbing seals (optional)

Preparation for special equipment:

- Electric door strikes
- Latch switches
- Magnet switches
- Secured hinges
- V2A lock plates
- Integrated door closers
- Floor door closers
- Multiple-point locking



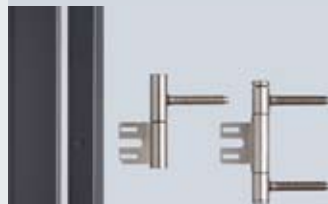
Integrated door closer



Electric door strike

Hörmann supplies the frames in a spectrum of brilliant special colours, with special hinge systems, sound-absorbing seals and numerous optional extras for increased convenience, safety and security.

Hinge systems for steel doors



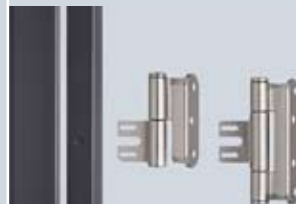
V 8120
up to
40 kg*

V 8026 WF
up to 70 kg*



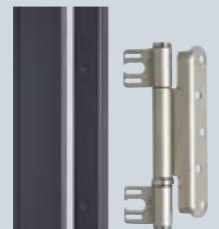
Globus
up to 120 kg*

Hinge systems for timber doors

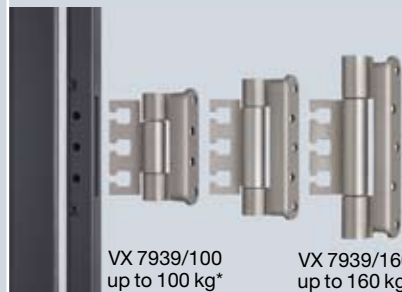


V 8130
up to
60 kg*

V 8037 WF
up to 70 kg*



VS 8939
up to 150 kg*



VX 7939/100
up to 100 kg*

VX 7939/160
up to 160 kg*

VX 7939/120
up to 120 kg*



Tectus TE 510 3D
up to 100 kg*

* The weight of the door leaf must not exceed 70% of the load values.

Project-related hinge systems

The frames are individually prepared, depending on the profile shape and the customer's requirements. For example, for VS 8900 series hinges or 3-way adjustable VX hinges as well as for hinges of your own choice.



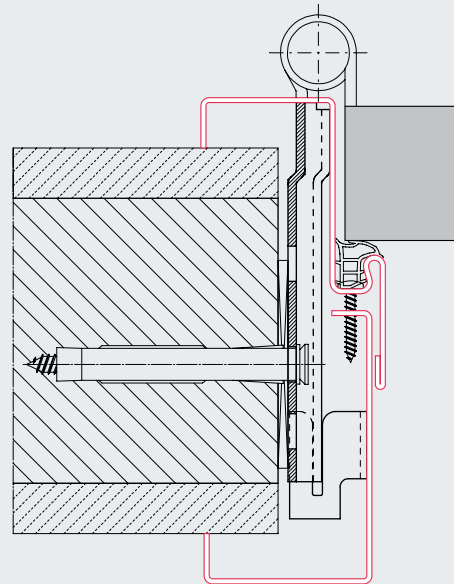
Apartment buildings

Secure, easy-to-fit and long-lasting

Steel frames are long-lasting, timeless and modern design elements for apartment buildings. Hörmann steel frames are suitable for new construction, as well as for restoration and modernisation projects.

Applications:

- Apartment door, optionally with multiple-point locking
- Internal door



Profile frame

2-shell with wall width adjustment and single rebate

- For retrofitting
- Wall width adjustment from 0 to 15 mm to compensate for variations in wall thickness



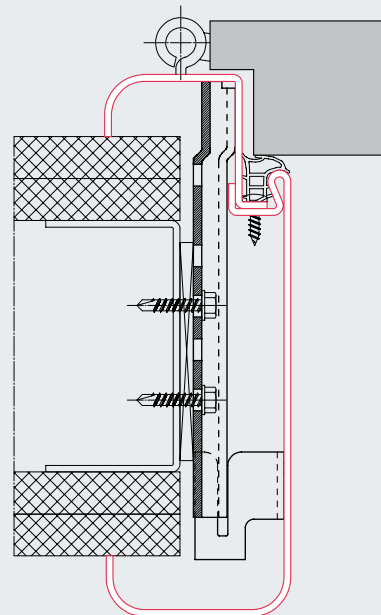
Hotels

Sturdy and in individual designs

Passages and doors in hotels and B&Bs must withstand the greatest strains while architectural demands also require individual designs and colours. Hörmann steel frames perfectly fulfil these requirements and are maintenance-free and enduringly resistant to strain.

Applications:

- Room doors and passages in hotel rooms
- Highly frequented rooms



Profile frame

2-shell with radii and single rebate on both sides
 Profile 21180 (rebated), profile 21680 (non-rebated)

- 2-shell for subsequent fitting
- With 10, 15 or 20 mm radii
- Also available as a standard rectangular frame



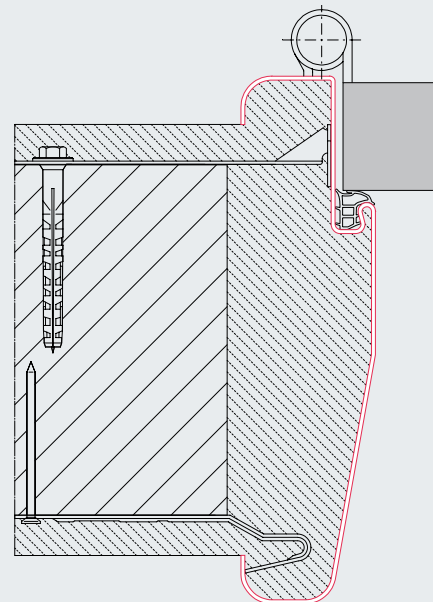
Hospitals

Resistant to impacts and easy-to-clean

Door frames made of steel are the right solution for diverse, demanding tasks in hospitals. Hörmann steel and stainless steel frames are up to the challenges for efficiency, cleanliness and hygiene found in an everyday clinic environment.

Applications:

- Room doors, wet rooms
- X-ray rooms (radiation protection with lead inserts)
- Operating theatre doors



Profile frame

1-part with chamfered reveal and radii

Profile 21325 (rebated), profile 21825 (non-rebated)

- Chamfered reveal makes it easier to push hospital beds and wheelchairs through doors
- Fixing with nail/grouting lugs and quick anchors or with plug-and-screw fitting through the reveal

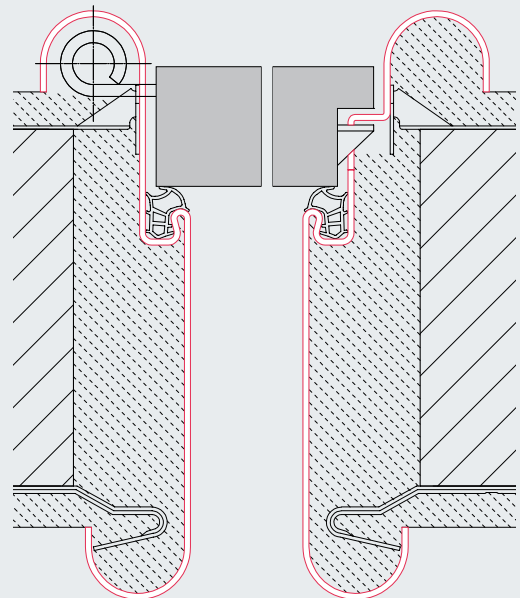


Public authority buildings, offices, schools, and kindergartens The efficient solution for highly frequented areas

Hörmann provides several designs, which is why you will always find the right frame, whether for offices, sports halls or kindergartens with particularly high requirements for robustness and safety. Special frame profiles reduce the danger of crushing, thus increasing safety for children and supervisors.

Applications:

- Office doors with transom lights or side elements
- Kindergartens



Profile frame, 1-part with roundstyle

Profile 29301 (rebated), profile 29801 (non-rebated)

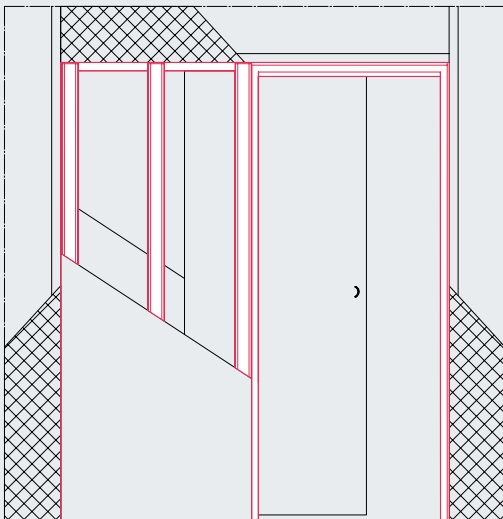
- Finger trap protection through a 7.5-mm thick seal and Globus hinge, especially for kindergartens
- The lock side on the non-rebated version has a rebated design in order to avoid damage to the roundstyle frame
- Also in a 2-shell version with radii style on the opposite hinge side



Sliding door with box design frame

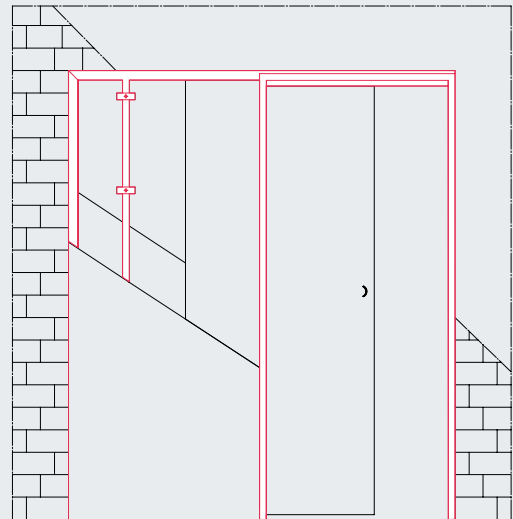
Frame variants for limited spaces.

Applications: 1-leaf in hotels and nursing home sanitary facilities, 2-leaf in apartments as a room divider



Box-design sliding door frame, single and double-leaf Door running within the wall

- For glass and timber doors
- For partition walls
- With simple cladding for 100-mm wall thickness; double cladding available from a wall thickness of 125 mm



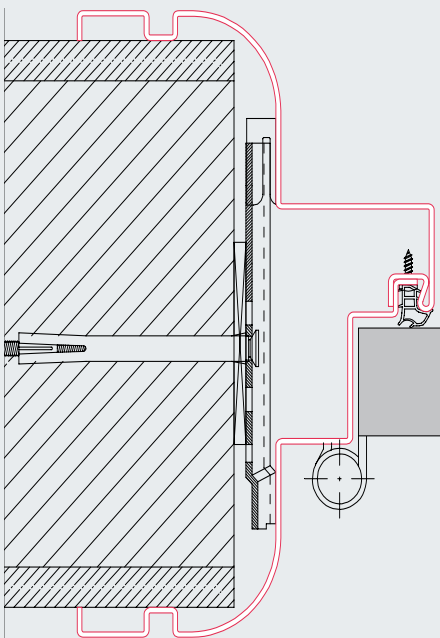
Box-design sliding door frame, single and double-leaf Door running within the wall

- For glass and timber doors
- For solid walls with Peridur building slabs as a plaster base made of light and stable rigid foam, joints with reinforcing straps (scope of delivery)



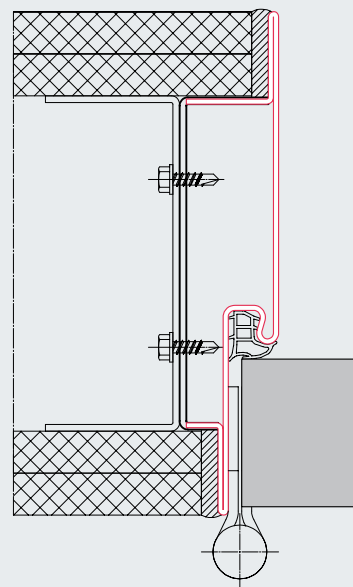
Frame types

Individually planned frames – here you can see a cross-section of our extensive range.



Profile frame 2-shell

- Special profile
- With graduated curvature (up to 35 mm)
- Edge recess
- For flush-closing doors

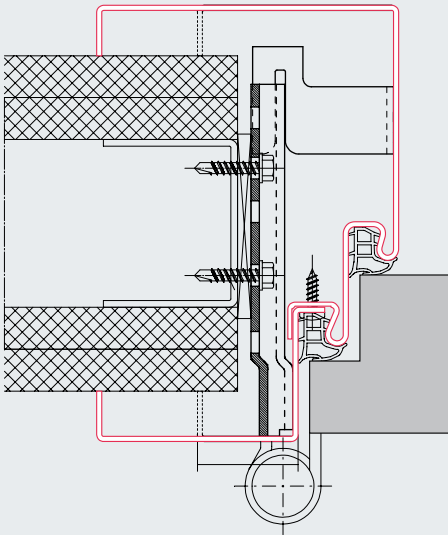


Profile frame 1-part without frame face

- Special profile
- Flush-fitting installation at the time of wall construction
- Non-rebated for flush-closing doors



Frame types

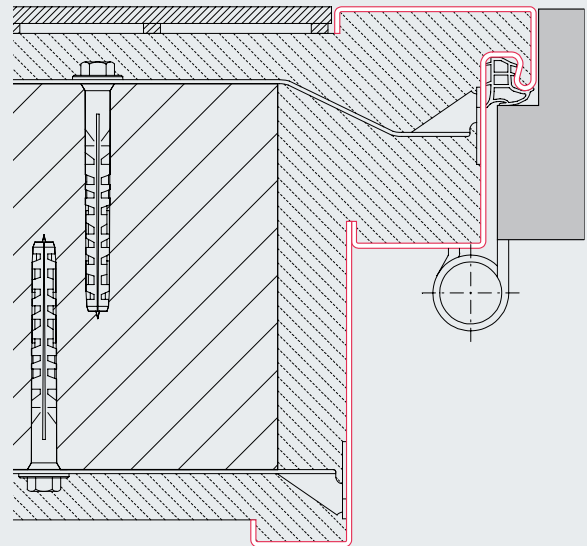


Double rebate profile

2-shell

Profile 21181 (rebated), profile 21681 (non-rebated)

- For increased sound installation
- Special application: doctors' practices
- Also available in a 1-part version



Sports hall frame

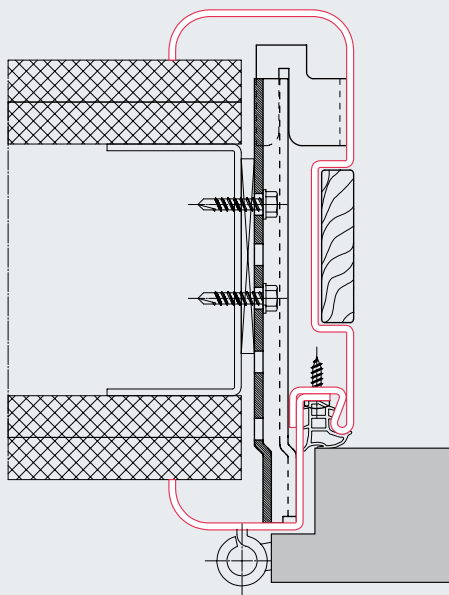
1-part

Profile 21169 (rebated), profile 21669 (non-rebated)

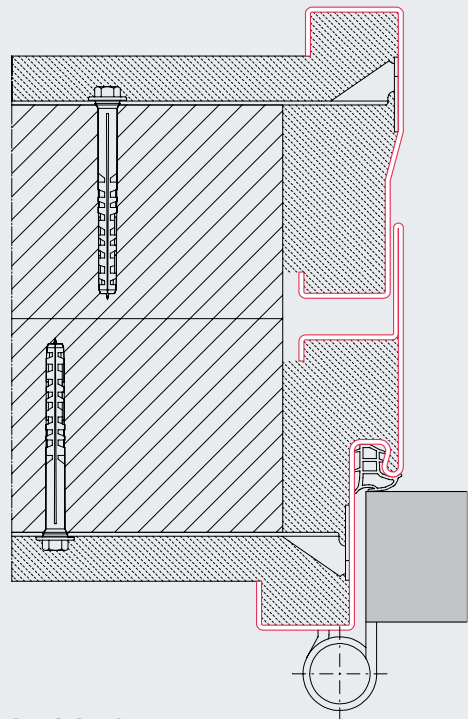
- Flush cladding to hall side in order to minimise the danger of injuries
- Door opening towards the frame reveal
- For solid walls



Our broad programme for rebated and flush door leaves, as well as sliding doors, gives you many design options.



- Profile frame**
2-shell with infill in the reveal
- With recess for decorative infill, e.g. granite or timber matching the door leaf and/or floor covering



- Expansion joint frame**
2-shell for passages to additions
 Profile 21108 (rebated), profile 21608 (non-rebated)
- For passages to additions



Practical for your construction project planning: One partner for everything



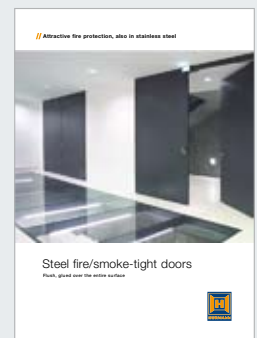
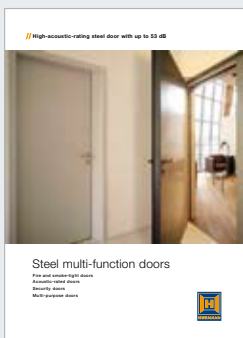
Visibility glazings

Hörmann visibility glazings are used as windows or room-high elements to provide more light and improved visibility. Individual solutions can also be implemented with rail partitions, recesses and slopes.

Fire and smoke protection elements

Hörmann delivers a wide range of fully glazed T30 and T90 tubular frame door sets. You can choose between three different models: the steel S-line, steel N-line, and aluminium. All of these models are matching in appearance and available to a maximum height of 4.5 m.

Further information can be found in the brochures.





Multi-function steel doors

Steel doors from Hörmann are more than just functional, they are characterised by their matching appearance. The advantage for architects and building owners: Doors that fulfil different functional requirements and are fitted on the same floor are perfectly suited to one another.

In addition to multi-function doors, Hörmann also offers a broad range of internal doors for construction projects. The doors, which have been specially developed for demanding day-to-day operations in industry, retail and public authority buildings, are extremely heavy-duty, rigid in form and highly durable. The programme is also characterised by a wide variety of colour and equipment options.

Hygienic rooms have special requirements. Hörmann offers special solutions for this, from stainless steel fire doors and hatches to stainless steel multi-purpose doors, single and double-leaf doors with a matching appearance, and, with corresponding equipment, in smoke-tight, acoustic-rated, and break-in-resistant versions.



Flush-fitting steel fire doors

The most obvious feature of these steel fire doors is a flush-fitting, elegant and matching appearance in the T30, T90 and smoke-tight versions.

On request, these doors also come with individual glazing, a concealed door closer, DIN panic function, monitoring contacts, and electric door strikes.

Hörmann: Quality without Compromise



Hörmann KG Amshausen



Hörmann KG Antriebstechnik



Hörmann KG Brandis



Hörmann KG Brockhagen



Hörmann KG Dissen



Hörmann KG Eckelhausen



Hörmann KG Freisen



Hörmann KG Ichtershhausen



Hörmann KG Werne



Hörmann Genk NV, Belgium



Hörmann Alkmaar B.V., Netherlands



Hörmann Legnica Sp. z o.o., Poland



Hörmann Beijing, China



Hörmann Tianjin, China



Hörmann LLC, Montgomery IL, USA



Hörmann Flexon, Leetsdale PA, USA

Hörmann is the only manufacturer worldwide that offers you a complete range of all major building products from one source. We manufacture in highly-specialised factories using the latest production technologies. The close-meshed network of sales and service companies throughout Europe, and activities in the USA and China, make Hörmann your strong partner for first-class building products, offering "Quality without Compromise".

GARAGE DOORS

OPERATORS

INDUSTRIAL DOORS

LOADING EQUIPMENT

HINGED DOORS

DOOR FRAMES

Hörmann (UK) Ltd, Gee Road, Coalville, Leicestershire LE67 4JW
Phone (01530) 513000, Fax (01530) 513001

