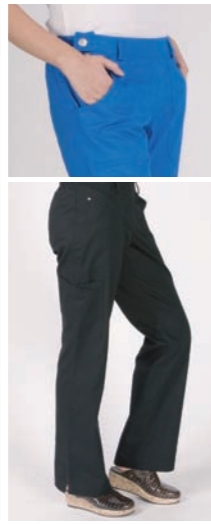


Zara

Flat front flared leg, flattering for all shapes and sizes, elastic back waist and size zip, discreet side pocket



- Royal
- Navy
- Black
- Fuchsia
- Steel
- Merlot

IN STOCK

- Ruby

TO ORDER

Available in Tall and Petite legs

A new standard in man's scrubs, subtle detail in durable yet super soft material, silicone piping on trousers to keep tops tucked in

Men's Range

- Steel
- Navy
- Royal

IN STOCK

- Hunter
- Stone
- Black
- Merlot

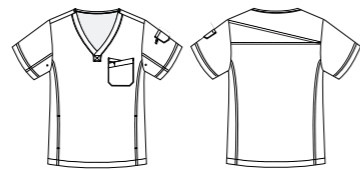
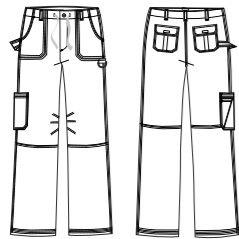
TO ORDER

koi Men's Size Chart			
koi SIZE	Chest	Waist	EUR Size
S	36-38	28-30	C48
M	40-42	30-32	C50-52
L	44-46	34-36	C54
XL	46-48	38-40	C56-C58
2X	50-52	40-42	C60
3X	54-56	44-46	C62

koi Men's Trousers Lengths		
Lengths	Inches	Cms
Regular	32	81
Short	30	76
Tall	34	86



Available in Tall and Short legs



happythreads.com

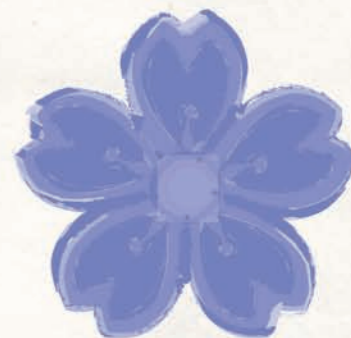
koi scrubs and tunics



For more information see our website: www.happythreads.com or call:

UK 02032 875 990
IRE 01 8684 323

www.happythreads.com



Why koi?

Happythreads.com are delighted to bring you the latest koi collection. The koi range has caused a revolution in the uniform market in the US since its introduction in 2005.

This success has been replicated since its introduction into the UK and Irish markets in 2009. Koi manufacture fashion-forward uniforms designed for those looking for a contemporary yet professional look. The secret of the koi garments is the fit and fabric, a well made and fitted garment will feel more comfortable and look better.

The koi uniforms are made from an easy care poly-cotton twill, which is hard-wearing and yet so soft and comfy. There are different trouser styles to choose from and each size is available in three different leg lengths, ensuring the correct fit for all.

koi Women's Size Chart		
koi SIZE	UK Size	EUR Size
XS	8	C34
S	10	C36
M	12	C38-40
L	14	C42
XL	16-18	C44-46
2X	20-22	C48-50
3X	24-26	C52

koi Women's Trousers Lengths		
Lengths	Inches	Cms
Regular	31	79
Petite	29	72
Tall	33	84

Ashley

Sporty, crossover V-neck (with contrast stripe trim), can be worn with contrasting tights

- Lemon (Steel)
- Black (Fuchsia)
- Navy (Ceil)
- Pink (Steel)
- Ruby (Steel)
- Steel (Pink)
- Ceil (Navy)
- Wasabi (Black)
- Peacock (Steel)

Longer length mock wrap top with elastic back and deep angled pockets, contrast trim

Ali

- Black (Fuchsia)
- White (Navy, Ceil)
- Navy (Ceil)
- Royal (Navy)
- Fuchsia (Black)
- Amethyst (Wisteria)

Kimono Style top with adjustable ties, side slits and front pockets

Katelyn

- White
- Navy
- Ceil
- Caribbean Blue

IN STOCK

- Black
- Ruby
- Royal Blue
- Steel
- Merlot
- Espresso

TO ORDER

Andie

Round neck, longer top, shapely with a little extra room

- White
- Navy
- Royal

IN STOCK

- Merlot
- Peacock
- Hunter
- Black

TO ORDER

Lindsey

Koi's best selling ladies trousers, try them on and you will understand, comfortable and durable.

- Black
- White
- Navy
- Ceil
- Steel

IN STOCK

- Pink
- Royal Blue
- Fuchsia
- Ruby
- Peacock
- Hunter
- Caribbean Blue
- Merlot
- Amethyst
- Espresso

TO ORDER

Available in Tall and Petite legs

Also available in XXS, XXS Petite and XXS Extra Petite (27", 69cms) leg length