

koi Sara

Flat front flared leg, flattering for all shapes and sizes, elastic back waist and size zip, discreet side pocket



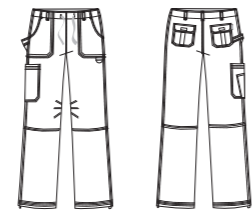
koi Women's Trousers Lengths		
Lengths	Inches	Cm
Regular	31	79
Petite	29	72
Tall	33	84

- White
- Ice Blue
- Royal
- Navy
- Black
- Flamingo
- Steel
- Merlot
- Ruby
- Amethyst

Available in Tall and Petite legs

koi Lindsey

Koi's best selling ladies trousers, try them on and you will understand, comfortable and durable.



- Black
- Navy
- Ceil
- Steel
- Amethyst

IN STOCK

Available in Tall and Petite legs

Also available in XXS, XXS Petite and XXS Extra Petite (27", 69cms) leg length

- White
- Ruby
- Peacock
- Hunter
- Caribbean Blue
- Merlot
- Espresso
- Ice Blue
- Royal Blue
- Olive

TO ORDER

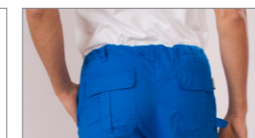
koi Men

A new standard in man's scrubs, subtle detail in durable yet super soft material, silicone piping on trousers to keep tops tucked in

koi Jason Men's top (new shape), and koi James trousers

- Steel
- Navy
- Royal
- Black

The new Jason top is a shorter length than the Maxx and made from the same breathable super soft fabric.



koi/Ecko Men's Size Chart

koi SIZE	Chest	Waist	EUR Size
S	36-38	28-30	C48
M	40-42	30-32	C50-52
L	44-46	34-36	C54
XL	46-48	38-40	C56-C58
2X	50-52	40-42	C60
3X	54-56	44-46	C62

koi/Ecko Men's Trousers Lengths

Lengths	Inches	Cms
Regular	32	81
Short	30	76
Tall	34	86

Available in Tall and Short legs

Order online at www.happythreads.ie or call us 01 8684323

happythreads.com

OUR LATEST GROUP STYLES FOR WOMEN & MEN



55% cotton ensures breathability and comfort.

New Justine Tunic

New Jason top



Uniforms for the modern dental practice. Goodbye to sweaty polyester tunics and ill fitting unisex scrubs.

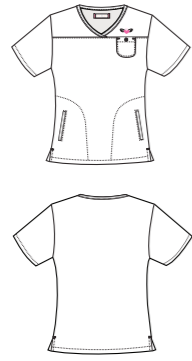
Why koi?

The secret of the koi garments is the fit and fabric. The koi uniforms are made from an easy care poly-cotton twill, which is hard-wearing while still soft and comfy.

koi Ashley

Sporty, crossover V-neck (with contrast stripe trim), can be worn with contrasting tightsers

-  Black (Flamingo)
-  Navy (Cell)
-  Pink (Steel)
-  Ruby (Steel)
-  Ceil (Navy)
-  Flamingo (Black)
-  Ice Blue (Navy)
-  Wisteria (Navy)
-  Turquoise (Navy)

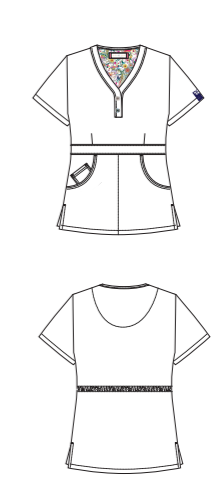


koi Women's Size Chart		
koi SIZE	UK Size	EUR Size
XS	8	C34
S	10	C36
M	12	C38-40
L	14	C42
XL	16-18	C44-46
2X	20-22	C48-50
3X	24-26	C52



koi Justine

Longer length top with comfort waistband, deep pockets and cute poppers







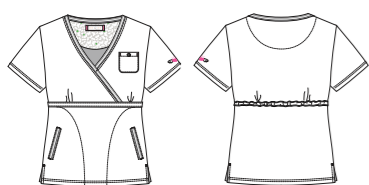
-  Amethyst
-  Navy
-  White
-  Ceil
-  Turquoise
-  Ruby
-  Steel
-  Black
-  Flamingo
-  Merlot



koi Ali

Longer length mock wrap top with elastic back and deep angled pockets, contrast trim











-  Black (Flamingo)
-  Navy (Ceil)
-  Royal (Navy)
-  Amethyst (Wisteria)



super soft poly/cotton twill

koi Katelyn

Kimono Style top with adjustable ties, side slits and front pockets

-  White
-  Navy
-  Ceil
-  Caribbean Blue
-  Black
-  Ruby
-  Royal
-  Steel
-  Merlot
-  Turquoise



Order online at www.happythreads.ie or call us 01 8684323

Order online at www.happythreads.ie or call us 01 8684323