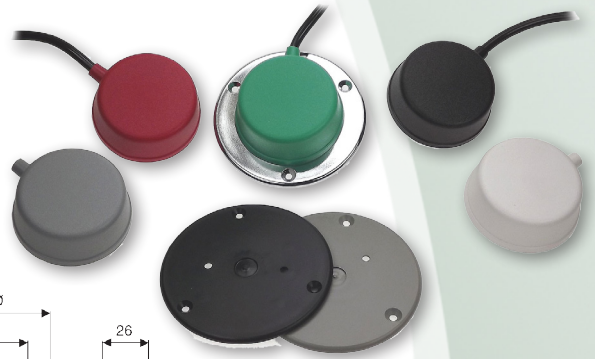


6431 & 6439 Bellows

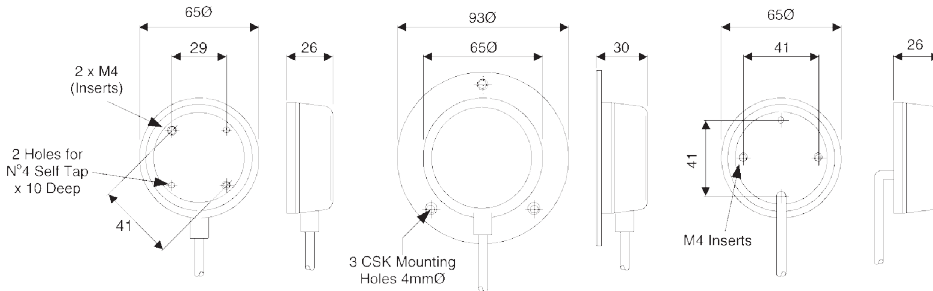
herga

Technology Ltd

- Ideal for hand or foot operation
- Large air volume for ease of operation
- Choice of colours
- Available with plastic base plate for added stability or permanent fixing
- Side or base entry tube outlet



Outline dimensions



Ordering and options

Stock model: 6439-AZZZ-0000

643 [] - [] [] [] [] - 0000

Model

Tube entry

- 1 Side entry tube
- 9 Back entry tube

Colour option

- A Black
- B Grey
- C White
- D Red
- F Green

Tube type

- A Black PVC tubing with 3 mm I/D and 6 mm O/D
- B Clear PVC tubing with 3 mm I/D and 6 mm O/D
- C Black PU tubing with 1.5 mm I/D and 3 mm O/D
- D Black PU curly coil with 1.5 mm I/D 3 mm O/D (please select option G from tube length section)
- Z No tube required

Tube length

- A 1.5 m
- B 2 m
- C 3 m
- D 4 m
- E 5 m
- F 6 m
- G Curly coil tube (2.4 metre ext.)
- Z None supplied

Mounting option

- C No mounting plate but with M4 inserts fitted
- D Grey plastic plate with mounting holes
- E Grey plastic plate without mounting holes
- F Black plastic plate with mounting holes
- G Black plastic plate without mounting holes
- H Chrome plastic plate with mounting holes
- J Chrome plastic plate without mounting holes
- Z No mounting plate supplied

General specifications

Standards/approvals	n/a
Degree of protection	EN 60529 IPX4
Connection method	Tubing 3 mm I/D or 1.5mm I/D (back entry only)
Pressure range	Works with 6871, 6872, 6773, 6753, 6891, 6893, 6861, 6862, 6863, 6864, 6869 – dependent on tube length

Operating temperature range	-10°C to +40°C
Body material	Thermoplastic
Weight	0.08 kg



Herga Technology Ltd - Northern Way - Bury St. Edmunds - Suffolk - IP32 6NN - UK
 sales@herga.com • www.herga.com • +44 (0)1284 701422

Subject to change without notice