



HAPPY
HALLOWEEN



O.P.I.

#1 SALON BRAND WORLDWIDE



'Scarily Easy Nails' to try at home using just 1 OPI dotting tool!



ALPINE SNOW

OPI's renowned 'whitest white'.



MALAGA WINE

What a year, what a vintage, what a great colour.

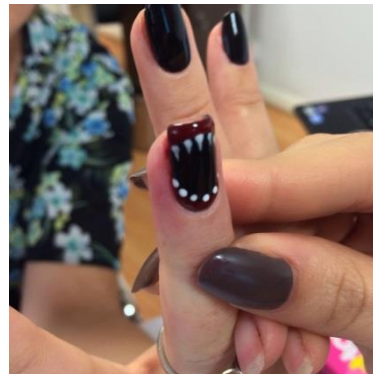
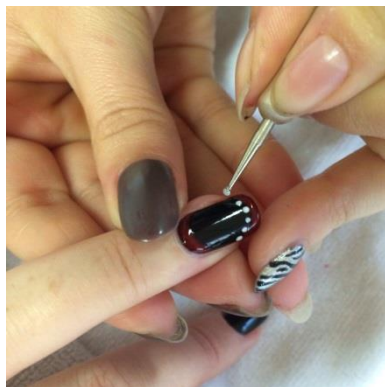


LADY IN BLACK

Go black and bring out the vamp in you...



1. Apply 2 thin coats of Alpine Snow to a prepped nail.
2. Dip the OPI dotting tool into Lady in Black to create the bandage look.
3. Using the opposite end of the tool, dot Malaga Wine for 2 eyes.
4. Finish the look with OPI Top Coat.



1. Apply 2 thin coats of Lady in Black to a prepped nail.
2. Dip the OPI dotting tool into Malaga Wine and paint a crescent shape at the base and tip of the nail.
3. Using the opposite end of the tool, dot Alpine Snow next to Malaga Wine for the teeth.
4. Finish the look with OPI Top Coat.