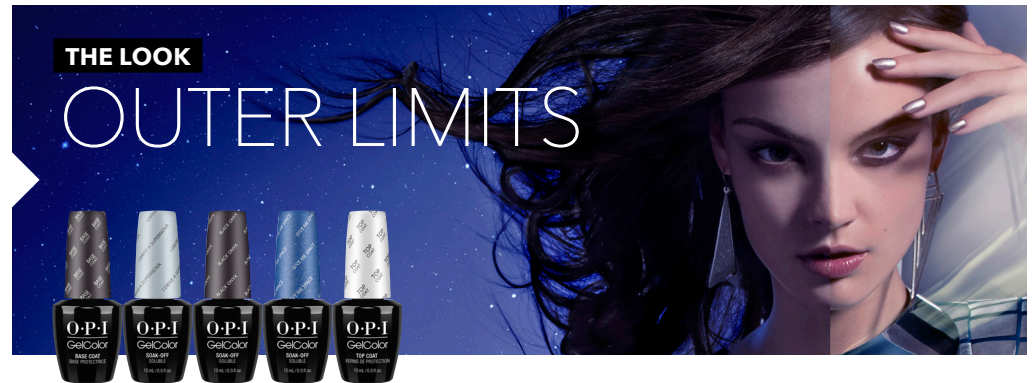


OPI STEP BY STEP

OPI GelColor

STARLIGHT

COLLECTION



CREATE THIS LOOK

On a properly prepared nail, apply a thin coat of **OPI GelColor Base Coat**. Cure 30 seconds in the **OPI LED Light**.



1

Apply two coats of **OPI GelColor I Drive a SuperNova**. Cure each coat 30 seconds.



2

Using **OPI GelColor Black Onyx**, apply a wide line diagonally across the nail. Blend from center towards cuticle and free edge. Cure 30 seconds.



3

Using **OPI GelColor Give Me Space**, apply a thin line and blend toward free edge. Cure 30 seconds.



4

Apply embellishments along the diagonal band by pressing them into the GelColor residue.

Apply a thin coat of **OPI GelColor Top Coat**. Cure 30 seconds. Remove gel residue with **Expert Touch Nail Wipe** and **N.A.S. 99**.

PRODUCTS USED

- OPI GelColor Base Coat
- OPI GelColor I Drive a SuperNova
- OPI GelColor Black Onyx

- OPI GelColor Give Me Space
- OPI GelColor Top Coat
- Embellishments

- Expert Touch Nail Wipe
- N.A.S. 99
- OPI LED Light

O·P·I