



SAMSUNG



staron[®] | 21mm
Acrylic Solid Surface

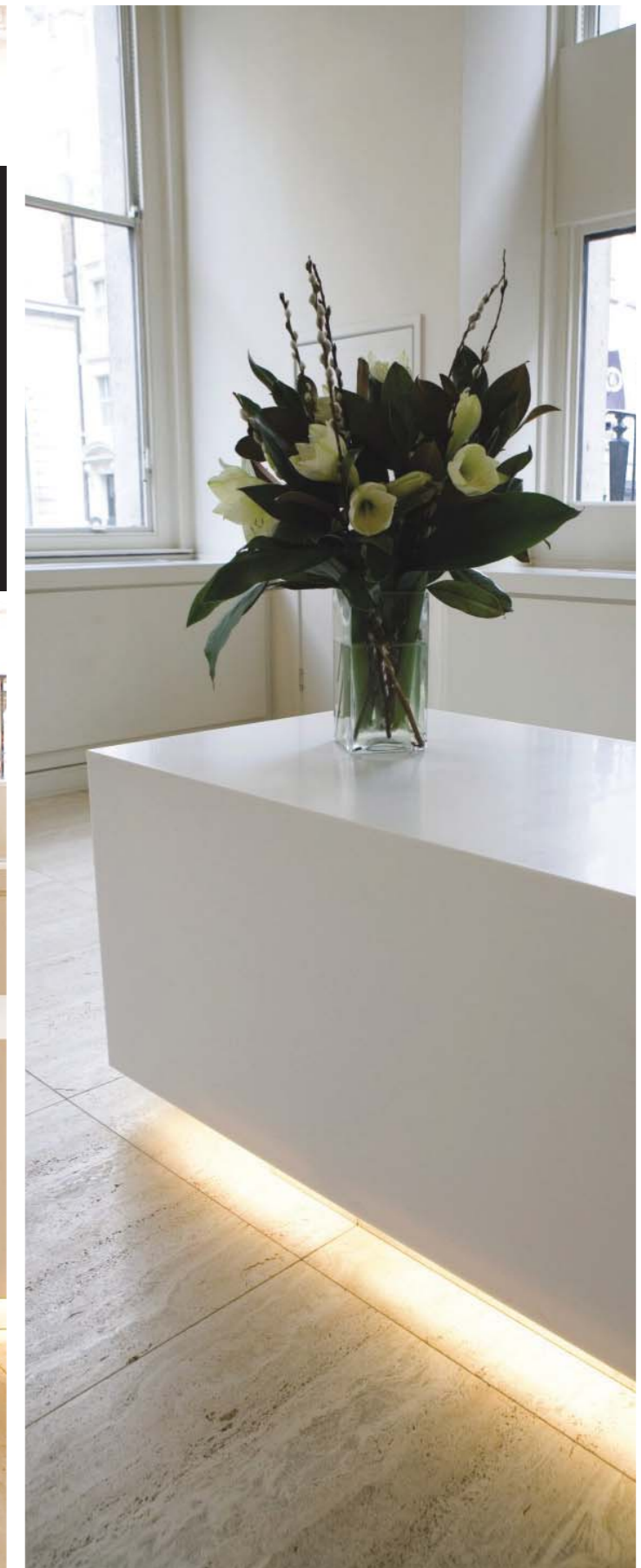
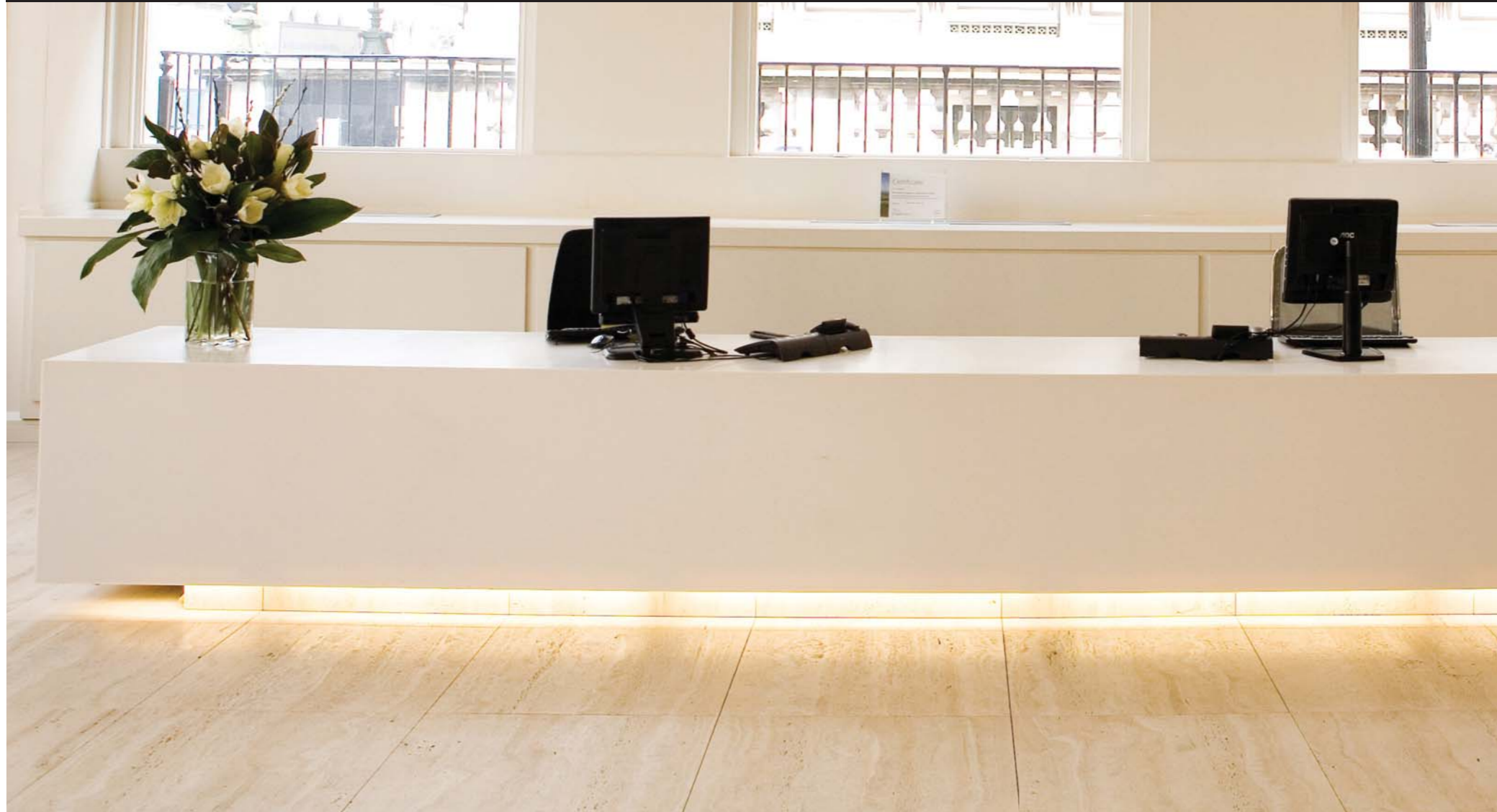
21mm

Acrylic Solid Surface for Laboratory
and Educational Furniture

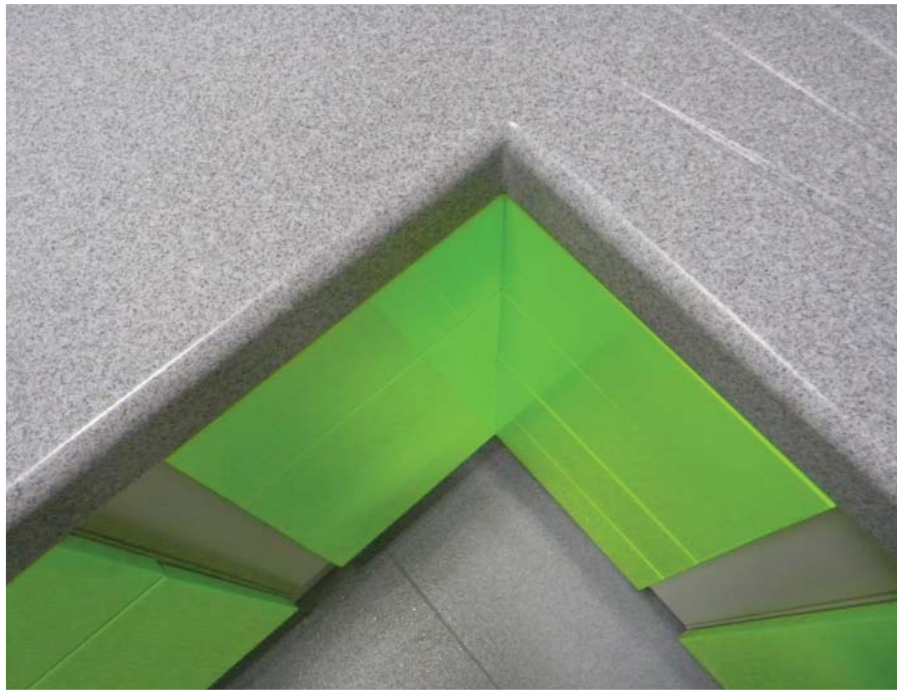


staron® | 21mm

21mm Staron® is a premium solid surface material, composed of 100% acrylic resin and aluminium trihydroxide. Staron® has a smooth and consistent appearance that runs throughout the material, allowing for three dimensional profiling. Staron® is durable, stain-resistant, hygienic, easy to clean and maintain. Staron® is non-porous, warding off unwelcome mildew and bacteria. Staron® is considered a re-usable material and can be refurbished to look "as new" reflecting effective recycling of this quality product.







21mm Staron® UK Stock Colours

Samsung check each sheet to ensure that it meets their rigorous quality standards. However, due to the nature of solid surfacing products and the potential for slight colour variation between production batches, it is the responsibility of the fabricator to ensure that there is an acceptable colour match especially between adjoining worktops/panels prior to fabrication.

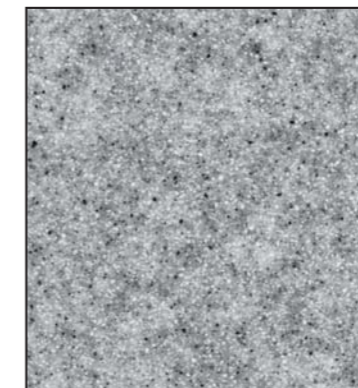
Colours and patterns in this document are printed and therefore may vary slightly from the original panel colours. Samples are available on request.

Sheet Sizes		Surface Finish
3050 x 760mm 2440 x 760mm		320 grit finish
Adhesive		
Pearl	- for use with Pearl worktops.	
N-White	- for use with Sanded Birch worktops.	
Magic	- for use with Sanded Grey and Sanded Sahara worktops.	
L-Jade	- for use with Fog worktops.	

Adhesive is supplied in 250ml cartridges as standard.



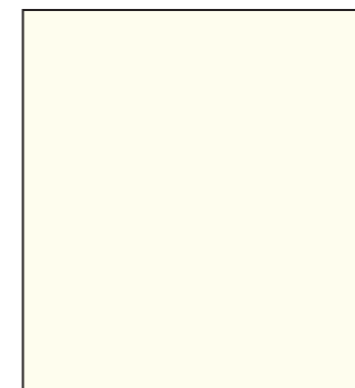
Sanded Birch **SB412**



Sanded Grey **SG420**



Sanded Sahara **SS440**



Pearl **SP011**



Fog **SF020**

The quality of Staron® is demonstrated by a 10 year limited manufacturers warranty

Product Features	
Impact resistant	Chemical and bacteria resistant*
Non-porous, hygienic and safe	Easy to clean and maintain
Repairable	Smooth, impenetrable seams
Long term value	Colourfast and UV stable

Fire Classification: Samsung Staron® is a fire rated acrylic solid surface which has been tested and meets the standard for Class O as defined in Paragraph A 13(b) of Approved Document B (Volumes 1 & 2), (2006 Edition) "Fire Safety" to the Building Regulation 2000.

*For further technical information please refer to the manufacturers data sheets.

Samsung Cheil Industries Inc manufacturers of Staron® is committed to lead the industry in minimizing the impact of it's activities on the environment. The company does this in a number of ways:

1. Samsung Cheil Industries Inc is accredited with ISO 14001:2004 Environmental Management System and as such aims to reduce the environmental footprint of it's manufacturing processes and decrease the pollution and waste produced. The manufacturing process and post process is considered "*Environmentally Friendly and Sound*".
2. There are no heavy metals or toxic chemicals used in the production of Staron®. All suppliers of the raw materials used in the manufacture of Staron® are supervised under a strict Samsung quality control programme. The products are manufactured complying with the requirements of RoHS (Restricting the use of Hazardous Substances) and NSF (National Sanitation Foundation, USA) ensuring that Staron® manufacturing meets the environmental standards required.
3. The high standards and efficiency of production in the manufacture of Staron® result in limited waste and reduced energy consumption. Scrap and waste are recycled and re-used in the manufacture of new products. Energy consumption is managed using respected management systems comparable to 6 Sigma and TPM.
4. The process of manufacturing Staron® Solid Surface involves the reaction of two compounds/acrylic resin and aluminium tri-hydroxide. The resulting product is a chemically stable material with limited impact on indoor air quality.
5. Staron® has a very low VOC (Volatile Organic Compound) content and has achieved the USA Green Guard Certificate and the Korean HB Certificate, both of which require a very strict indoor air purification policy.

Recycling of Staron®

With the exception of solid colours, several Staron® colours can contain recycled materials. During the manufacturing process previously manufactured solid surfacing can be crushed and re-used in the production of new solid surface materials. The product can contain up to 10% recycled material. All Staron® solid surface colours can be used in the recycling process.

Staron® is considered a re-usable material and can be refurbished to look "as new" reflecting effective recycling of this quality product. This demonstrates consideration for our environment and also reflects potential cost savings. Otherwise, waste products can be incinerated or disposed of to landfill in compliance with local regulations.

Care & Maintenance

Everyday Care

General cleaning of your Staron® solid surfaces can be done by wiping the surface with a damp cloth or sponge, then dry with a soft cloth or paper towels to prevent spotting - especially in areas with hard water.

Basic Stains

Clean with ammonia based products such as household glass cleaner or commercially available non-abrasive spray-on cleaners for solid surface products. Wipe dry with a soft cloth or paper towels to prevent spotting.

For full information on care & maintenance, please refer to the Samsung 21mm Staron® specification binder or visit us at www.samsungstaron.eu.

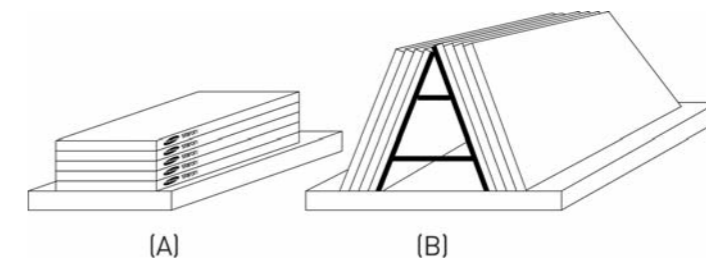
Safety, Handling and Storage

Staron® sheets are most effectively stored at temperatures between 15-23°C (59-73°) and should be kept in a dry and well ventilated indoor area. Avoid exposure to moisture during storage.

(A) Staron® sheets should be stored flat and evenly supported (as illustrated)

(B) Staron® sheets must be stored on vertical storage racks with the base of the longer edge of the sheet fully supported by a flat floor or stable platform.

Note: Staron® sheets should be stored for easy access where Lot Numbers and Colours can be identified.



Staron® sheets are usually transported on pallets. Staron® appropriate pallets should be unloaded with a forklift or other lifting device.

If a lifting device is not available Staron® sheets can be unloaded manually.

- Handle one sheet at a time.
- Sheet should be handled on the edge.
- Carry vertically. (Landscape - long edge down).
- Always wear heavy-duty protective gloves and proper safety shoes.
- Always use two people.

Chemical Resistance

Test method: Apply 3 drops of each chemical agent to the surface of Staron®. Expose the sample for 16 hours; covered with a glass plate and uncovered. Check the surface and then scrub with a wet Scotch-Brite® pad and bleaching cleanser such as Ajax/Cif cream cleanser.

The residue from the chemical agents can be removed with a wet Scotch-Brite® pad and bleaching cleanser.

Acetic Acid (10%)	Acetone	Ammonia
Ammonium Hydroxide (5, 28%)	Amyl Acetate	Amyl Alcohol
Ball Point Pen	Benzene	Bleach (household)
Blood	B-4 Body Conditioner	Butyl Alcohol
Carbon Disulphide	Carbon Tetrachloride	Citric Acid (10%)
Calcium Thiocyanate (78%)	Cigarette (nicotine & tar)	Coffee
Cooking Oils	Cottonseed Oil	Cupra Ammonia
Dishwashing Liquid/Powder	Ethanol	Ethyl Acetate
Ethyl Ether	Formaldehyde	Gasoline
Gentian Violet	Grape Juice	Hair Dyes
Household Soaps	Hydrochloric Acid (20, 30, 37%)	Hydrogen Peroxide
Iodine (1%)	Ketchup	Lemon Juice
Lipstick	Mercurochrome (2%)	Methanol
Methyl Ethyl Ketone	Methyl Orange (1%)	Methyl Red (1%)
Mineral Oil	Mustard	Nail Polish
Naphthalene	N-Hexane	Olive Oil
Pencil Lead	Perchloric Acid	Permanent Marker Pen
Shoe Polish	Soapless Detergents	Sodium Bisulphate
Sodium Hydroxide Solution (5, 10, 25, 40%)	Soy Sauce	Sodium Sulphate
Sulphuric Acid (25, 33, 60%)	Sugar (Sucrose)	Tea
Toluene	Tetrahydrofuran	Urea (6%)
Tomato Juice	Vinegar	Uric Acid
Wine	Washable Inks	Zinc Chloride
Xylene		

The following chemical agents may stain the surface but can be completely removed by sanding.

All spillages should be cleaned up immediately in order to maintain the surface and avoid unnecessary repair work.

Acetic Acid (90, 98%)	Acid Drain Cleansers	Chlorobenzene
Chloroform (100%)	Chromic Trioxide Acid	Dioxane
Ethyl Acetate	Equalizing Mix (50/50)	Film Developer
Furfural	Glacial Acetic Acid	Luralie Mix (50/50)
Methylene Chloride based products such as paint removers, brush cleansers and some metal cleansers.	Nitric Acid (25, 30, 70%)	Phenol (40, 85%)
Phosphoric Acid (75, 90%)	Sulphuric Acid (77, 96%)	Richloroacetic Acid (10, 50%)



www.samsungstaron.eu

staron® | 21mm Acrylic Solid Surface

UK SUPPLIER

PERFORMANCE PANELS LIMITED

Carvic House
Black Brook Way
Stainland Road
Greetland
Halifax HX4 8ED

Tel: +44 (0) 1422 310319 Fax: +44 (0) 1422 311562
www.performance-panels.co.uk

FRANKFURT

SAMSUNG CHEMICAL EUROPE GMBH

Am Kronberger Hang 6,
D-65824 Schwalbach/Ts., Germany
Tel: +49-6196-667-404 Fax: +49-6196-66-74-68

Copyright ©2013 Cheil Industries Inc.

Printed in UK
04/2013 V3



PRINTED ON RECYCLED PAPER

