



Helping keep your workplace floors

**CLEANER**  
**DRIER**  
**SAFER**

# CONTENTS

MATS AROUND THE WORKPLACE	3
THE IMPORTANCE OF WORKPLACE MATS	4
<b>ENTRANCE MATS</b>	6
<b>MATWELL RESTORATION &amp; CLEANING</b>	17
<b>DUST-SMART MOPS</b>	18
<b>FLOOR CARE &amp; RESTORATION</b>	20
<b>BAR &amp; KITCHEN MATS</b>	21
<b>ANTI-FATIGUE MATS</b>	23
<b>INDUSTRIAL MATS</b>	26
<b>SPECIALIST MATS</b>	29
<b>LEISURE MATS</b>	32
LAUNDERED <b>ROLLER TOWELS &amp; TOWELS</b>	36

## KEY

-  Suitable for wet environments
-  Suitable for oily environments
-  Flame retardant tested
-  Slip resistant tested
-  Suitable for matwells
-  Suitable for loose lay
-  Suitable for surface mounting

All images & specifications are for illustration only. PHS reserves the right to change any of these without notice.

# THE MATS AND MATTING EXPERTS

PHS Treadsmart are the UK's number one provider of quality, serviced entrance mats and matting, but we also do so much more for your floors! We offer a complete range of mats that provide protection for your staff and customers through anti-slip or anti-fatigue properties, as well as specialist on-site mat cleaning services, and one of the most comprehensive ranges of fitted entrance matting systems in the UK.

We're passionate about helping you keep your floors clean, dry and safe, so you can be sure that the product we specify will meet your exact requirements. With over 50 years experience and as holders of the Royal Warrant, ISO 9001 and ISO 14001 you can be assured that our service and products are of the highest quality.

Offering national coverage with local service, our strategically located regional depots ensure we provide you with the highest levels of service from our professional, friendly team no matter where you're based.



By appointment to  
Her Majesty Queen Elizabeth II  
Suppliers of Mats and  
Matting Services  
PHS Treadsmart, Caerphilly



Cert No. 8295  
ISO 9001 ISO14001

# MATS AROUND THE WORKPLACE

Mats help to create a cleaner, drier, safer working environment for your staff and visitors, with the benefits extending far beyond your main entrance.

## COMMERCIAL KITCHEN

- Ideal for kitchens and bars, mats make wet or greasy floors safer underfoot
- Integral anti-microbial properties inhibit growth of bacteria
- Textured surface design helps prevent slips and provides additional comfort for staff

## ENTRANCE & RECEPTION AREA

- Create the first line of defence to stop dirt and moisture entering your building
- Keep floors cleaner in your reception and entrance areas
- Logo mats help to reinforce your brand and create a great first impression

## MANUFACTURING AREA

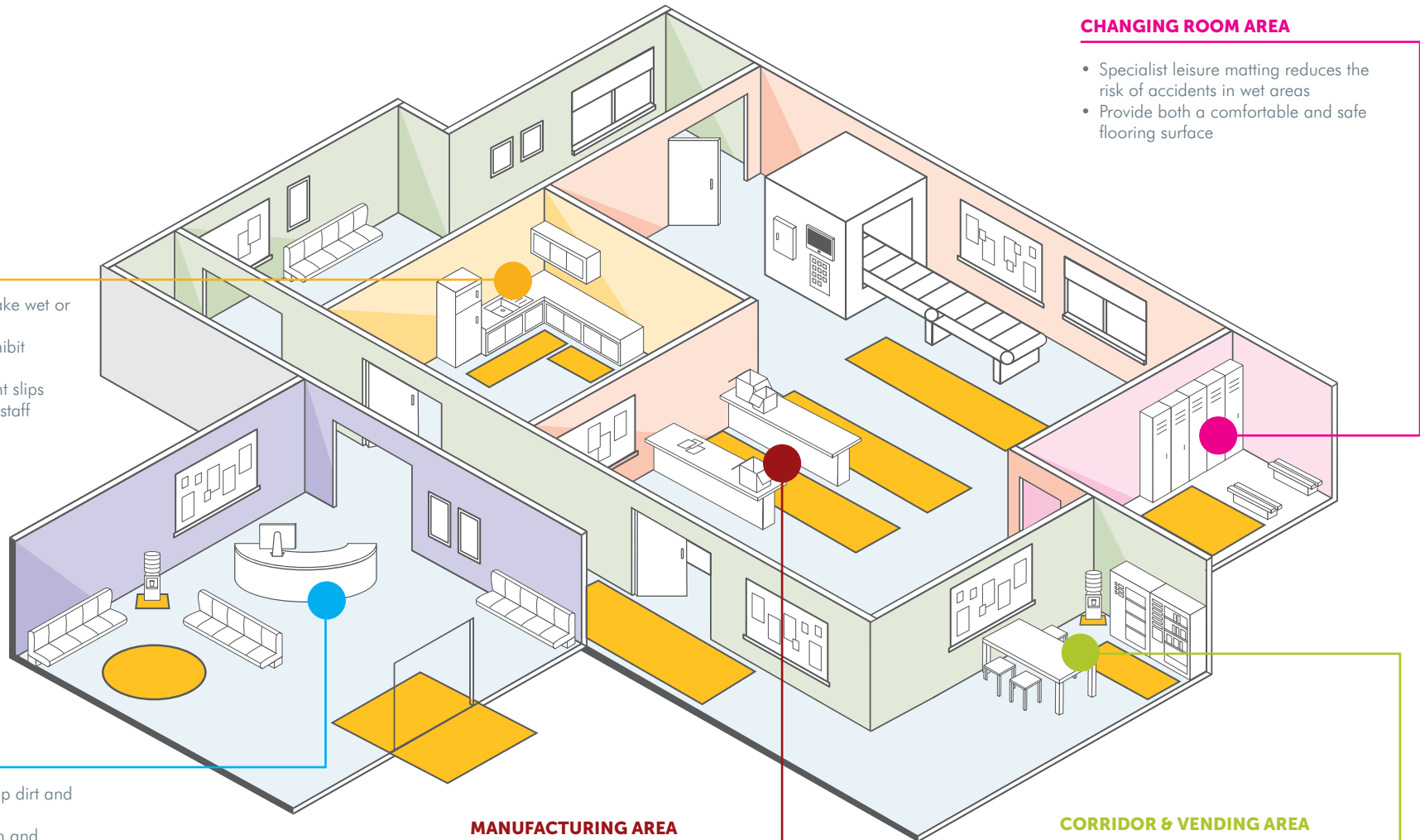
- Mats create a safer working floor surface in areas where oil and small debris is a hazard
- Provide insulation from cold concrete floors and a more comfortable working environment for standing workers
- Help staff by providing anti-fatigue matting to reduce aches and pains caused by long periods of standing

## CHANGING ROOM AREA

- Specialist leisure matting reduces the risk of accidents in wet areas
- Provide both a comfortable and safe flooring surface

## CORRIDOR & VENDING AREA

- Mats help reduce slips and protect floors from staining caused by spillages
- Help protect floors from the ingress of dry, dusty soiling
- Reduce the slip hazards commonly found in front of drinks dispensing machines by absorbing spilt liquids



# THE IMPORTANCE OF WORKPLACE MATS

## CLEANER



A dirty entrance floor creates a bad first impression. An appropriately sized and sited entrance mat can capture substantial amounts of foot borne dirt, helping to protect your floors and lower your cleaning costs.

Treadsmart offer a huge range of colours, sizes and matting types, ensuring we've got a solution that suits your environment.

**70%** of the dirt entering your building is from the **soles of peoples shoes**

Source: Dept. of Environment

## DRIER



Wet, slippery floors are a major cause of workplace slips and falls. However the placement of mats can help to reduce the risk of slipping by absorbing foot borne moisture, making your floors drier and less slippery.

Treadsmart provide a range of mats and matting to help absorb moisture whether it be walked in from the outdoors or spilt from a source on site.

**90%** of slips occur when the **floor is wet**

Source: HSE

## SAFER



Your current flooring may not always provide the safest working floor surface for the job, but replacing the floor simply isn't an option. That's why Treadsmart provide a complete range of mats and matting that are designed to create a safer working floor surface for your employees.

Whether you have a wet, slippery changing room floor, an area prone to small manufacturing debris or simply need to help protect your employees from long periods of standing, Treadsmart have the matting solution.

In 2011/12, Slips, trips and falls were the **MOST COMMON CAUSE OF INJURY** to employees.

Source: HSE

# THE IMPORTANCE OF SERVICED MATS

Mats are designed to collect dirt, but they can only collect so much before they are effectively full. If the accumulated dirt is not removed, the mat ceases to work efficiently and continued traffic will walk the dirt and moisture off the mat and into your premises, proving as effective as having no matting solution at all!

Treadsmart serviced mats always work efficiently as they are regularly, professionally cleaned to remove the accumulated dirt, ensuring they are always working to protect your floors and reduce your cleaning outlay.



## LIFT & LAY SERVICE

Treadsmart mats are professionally installed at your premises by our service personnel, and are provided complete with our Lift and Lay service. This ensures your mats are regularly removed for specialist laundering and immediately replaced with fresh ones, so your floors are never left without protection. And with our flexible service options, we can tailor the frequency of our service to suit your sites requirements.

## Advanced Laundering for Smarter Mats

Treadsmart's technologically advanced, environmentally conscious laundering systems ensure your mats are thoroughly deep cleaned to remove all moisture, dirt and grit so they look brighter, smarter and richer in colour than other solutions.



## ON-SITE SERVICE

We also ensure that your oversize or permanent fit matwell matting is properly cared for with our specialist on-site cleaning service.

This ensures that even the largest matting installation is regularly deep cleaned to keep it looking great and working efficiently.





## TOUGH SCRAPER

Treadsmart's Tuff mat is your buildings first line of defence against the elements, keeping dirt where it should be – on the outside.

Designed for extreme durability, the Tuff mat is unbeatable. Thanks to its tough scraper action, heavy dirt and debris is collected and retained within the mat, helping to keep your entrances clean and reduce cleaning costs.

At Treadsmart we know that first impressions count, which is why the Tuff mat is made from fade-proof UV resistant nylon, so will look good whatever the weather throws at it. And with the regular laundering service, the Tuff mat's strong mono-filament nylon pile will provide protection for your premises year after year.

# TUFFMAT



Sizes **1.5 x 0.85m, 2 x 1.15m, 3 x 0.85m**

Colours



## ALL PURPOSE

Our Standard mat is made from crush resistant, solution dyed nylon pile that is both long lasting and helps to trap and conceal dirt and moisture, making it an efficient solution for keeping floors clean, dry and safe.

Thanks to its special design, collected moisture evaporates overnight leaving the mat dry and ready for the next day.

Ideal for use throughout the workplace, the Standard mat contains carbon filaments in every tuft to help dissipate static charge and protect nearby electrical equipment such as vending machines or photocopiers.

The hardwearing Standard mat is colourfast so won't fade, and will carry on looking good whilst protecting your floors for years to come.



# STANDARD MAT



Sizes

1.2 x 0.85m, 1.5 x 0.85m, 1.8 x 1.15m,  
2.4 x 0.85m, 3.5 x 1.15m

Colours



BS4790





## DUAL ADVANTAGE

With its alternating rows of monofilament and multifilament fibres, the Principal mat offers the best of both scraper and absorber mats.

The unique pile construction offers a superior performance, which captures up to 50% more soiling than standard solution dyed mats.

Principal Plus offers all the benefits of the Principal mat but on a larger scale. Available 'on a roll' of up to 25m this offers the ability to extend your matting well into the building providing even greater protection.

# PRINCIPAL | PRINCIPAL+



PRINCIPAL



PRINCIPAL+

PRINCIPAL



PRINCIPAL+



ISO13501

### Sizes

Principal **0.85x2m, 1.15x2m, 1.5x2m, 2x2m**

Principal+ **Available in roll format for large areas-  
2m width and up to 25m in length**

### Colours



## HIGHLY ABSORBENT


Treadsmart's Ultra mat is ideal for areas where walked in grease, oil or heavy-duty dirt and moisture cause problems.

Anti-static filaments contained within the tufted fabric means that the Ultra mat does not build up static electricity, reducing the risk to machinery and equipment.

The Ultra mat's pile combines dyed nylon scraper yarn with an absorbent cotton yarn to effectively remove and absorb more heavy-duty foot borne dirt and moisture than other matting. The integral anti-microbial additives help to leave your mats odour, mould and mildew free – no matter how much moisture and dirt is absorbed.



Sizes **1.2 x 0.85m, 1.5 x 0.85m, 1.8 x 1.2m, 2.5 x 0.85m, 3.5 x 1.2m**

Colours  



BS4790



# ULTRAMAT



## BE CREATIVE

Create the right first impression in your business with a Treadsmart Logo mat. These offer an effective branding medium to create impact, whilst efficiently removing dirt and moisture and protecting your floors.

Custom made to your design, Logo mats can be used to create the image you want. No matter how simple or complex the design, Treadsmart's design team work with you to ensure your mat creates that visual wow factor.

Your design could include your logo, a welcome message or even a photographic image - your imagination really is the only limitation as to what can be produced.

Made from tough nylon yarn, the Logo Mat tufts contain carbon filaments to help dissipate static charge to protect staff and electrical equipment.



# LOGO & UNICOLOUR MATS

# CIRCULAR LOGO MAT

A square peg won't fit in a round hole so why put a round logo on a square mat? With circular mats available in a range of sizes, Treadsmart can create a mat designed to fit your logo for maximum impact.



# OUTDOOR LOGO MAT

Treadsmart offers a range of rubber logo mats ideally suited to the outdoors or the more demanding environment. The raised rubber surface creates a scraper effect to help remove large particles of soiling, and the sky's the limit in terms of design with over 50 colours available, you can even use photographic imagery to create an instant first impression.



# UNICOLOUR MAT

The Unicolour mat offers an extensive colour palette of over 60 colours with which to match your specific company décor or brand colour.

They are also available in bespoke sizes and as fitted mats for mat wells or recessed areas such as lifts and revolving doorways.



SIZES	
Logo mats	1.2 x 0.85m, 1.5 x 0.85m, 1.8 x 1.15m, 2.4 x 0.85m, 2.4 x 1.15m bespoke sizes also available
Circular Logo	Ø1.5m, Ø1.98m
Outdoor Logo	0.85 x 1.5m, 1.15 x 1.75m, 0.85 x 3m
Unicolour	1.2 x 0.85m, 1.5 x 0.85m, 1.8 x 1.2m, 2.5 x 0.85m, 2.4 x 1.2m, 2.4 x 1.5m, 3.5 x 1.2m bespoke sizes also available
Colours	Range of over 60 colours



## TOUGH & DURABLE

Consisting of three complementary tile designs, these seamlessly interlock to form an exceptionally tough and durable fitted matting solution. When used together, the three products can create limitless design options, adding interest and design to your entrance.

The tiles can be custom cut to fit any size and shape matwell, creating an unobtrusive and highly effective matting solution. Their unique design also allows them to be surface mounted enabling matting coverage to be extended beyond the mat well, or even allowing them to be used where there is no well present at all.

Prior tiles are made from rigid colourfast UPVC, and provide a great scraper action for larger particles of soiling. The open construction ensures the collected dirt drops into the tile, keeping the surface looking clean.

Tergo tiles offer the added benefit of a high grade, mono filament nylon insert, giving the surface an unbeatable scraper action. Whereas Forma tiles use an insert of a high grade, nylon twist fabric, giving them exceptional moisture and dirt retention.

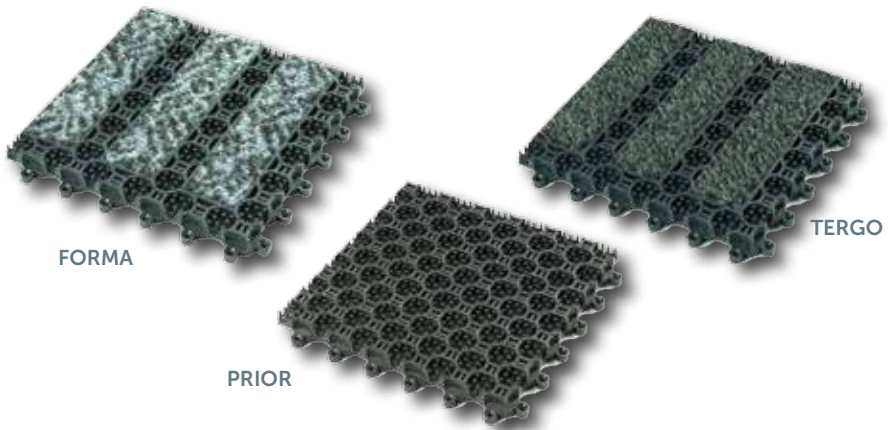
# FORMA, TERGO & PRIOR

# SHIELD MAT

Treadsmart's Shield mat combines the benefits of the Prior, Tergo and Forma tiles with the personalised look of the Logo mat. We can inset your design of Logo mat into the tile system, allowing you to personalise even very large entranceways.

# SMARTSTEP

Ideal for high traffic areas, Smartstep is a complementary secondary matting, available in the same colours as the Forma tile inserts, making it ideal to use in conjunction with the Forma tiles. The high twist mono & multi filament nylon pile is nitrile rubber backed and treated with a Fluorocarbon chemical to help make soiling and staining easier to remove.



Sizes	20 x 20cm tiles fit any area 16mm or 11mm depth Open or closed construction	
Colours	Tile	●
	Forma Infill	● ● ● ● ● ● ● ●
	Tergo Infill	●



## CONNEX

A modular tile matting system which can fit any shape and size mat well. The tiles are available with two different type fabric inserts, each with 4 colours, so there's bound to be a perfect match for your buildings decor.



Sizes **Tile format so any size can be catered for**  
**Tile Size: 25cm x 25cm**

Thickness **12mm and 17mm**

Colours **FOCUS:** ● ● ● ●  
**MAXIMUS:** ● ● ● ●



## PREMIERSURFACE

Ideal for entrances with high volumes of footfall, this is a modular interlocking entrance tile system that is designed to be laid onto the floors surface, and not in a matwell, with impact resistant bevelled edges and rounded corners. The solid surface tiles incorporate a hard wearing nylon carpet insert that is highly effective at scraping dirt and wiping moisture. PVC base of the tile is manufactured from 100% recycled materials.



Sizes **Tile format so any size can be catered for**  
**30cm x 30cm. Edging 78mm x 2m lengths**

Thickness **12mm**

Colours ● ● ● ●



## FOCUS

Ideal for high traffic areas, Focus is a premium secondary carpet matting that provides excellent dirt and moisture removal and is ideal for fitting into numerous areas including mat wells, lifts, stairways and receptions. The high twist polyamide yarn is vinyl backed and available in large off the roll sizes.



Sizes **2m width rolls x 25m length**

Thickness **10mm**

Colours ● ● ● ●



# TREADWELL

A flexible entrance tile system for mat wells, consisting of a black PVC tile with a quality needlepunch carpet infill to scrape dirt and moisture from foot traffic. The large tiles are both easy to connect and easily cut to fit any size and shape of area.



Sizes	Tile format so any size can be catered for 30cm x 45cm
Thickness	15mm
Colours	● Infill: ● ●



# PREMIERTRACK

A flexible PVC tile with high quality carpet insert, the Premier Track matwell entrance system is designed to scrape dirt and absorb moisture. Load tested to 1000kg, it's suitable for all indoor areas, and creates a smart & stylish entranceway.



Sizes	Tile format so any size can be catered for 30cm x 45cm
Thickness	15mm
Colours	● Infill: ● ● ●



# ALUMINIUM

Aluminium entrance matting offers a hard wearing, highly effective and attractive option. However with the vast array of options available, it can be difficult to ensure you get the right solution. Our sister division, Syncros, specialise in the supply and installation of Aluminum matting from all the main manufacturers and will ensure you get the right product for the job. For more information call us on 01234 314314 or visit [www.syncros.co.uk](http://www.syncros.co.uk)



Sizes	Any size can be catered for
Thickness	Suitable for any depth well
Colour	Multiple options



## COIR MATTING

Ideal for fitting into a matwell, coir mats are available in natural or synthetic fibre. Natural coir mats are made from 100% pure coconut fibre and Synthetic coir mats are made from 100% nylon, both have a PVC backing for added stability. Coir mats are available with a plain finish or inlaid with your logo to provide a personalised entrance mat.



Sizes **Any size can be catered for**

Natural:

Synthetic:



## CLEANWALK

A hard wearing, multi-purpose rubber mat that effectively scrapes larger dirt particles from the soles of shoes, and prevents them being walked into your building.

Manufactured from 100% Nitrile rubber, it's long lasting and resistant to oil and chemicals, and is easy to clean by shaking or hosing down.

Sizes **0.85 x 1.5m,  
0.85 x 3m, 1.15 x 1.75m**

Colour



## RINGMAT

An extremely tough, hard wearing rubber matting ideal for outdoor areas. The raised surface makes it ideal for very wet or snow prone locations, and provides a scraper action for dirt and debris whilst the large holes allow the debris to fall through the mat. Available in a choice of octagonal (shown above) or honeycomb pattern, connectors are also available to link mats to provide coverage for larger areas.

Sizes **1.0m x 1.5m, 0.8m x 1.2m,  
1.0m x 1.5m**

Thickness **22mm**

Colour





# CLEAN & WELCOMING

Entrance barrier matting is your floors' frontline of defence and is there to remove foot-borne dirt and moisture, so it's designed to become the dirtiest part of your buildings floor. However barrier matting is often installed and then left with no regular care regime apart from a cursory vacuuming by the site cleaner.

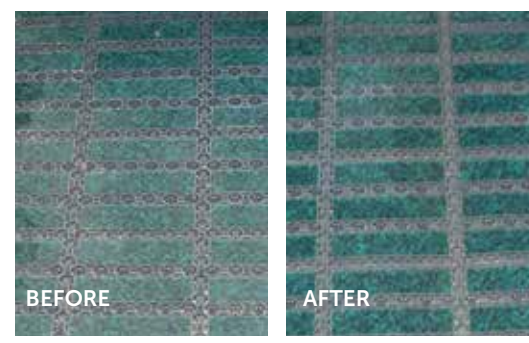
## **MATWELL RESTORATION**

Within months of installation, if appropriate cleaning has not taken place, your matting is likely to look dull and dirty and give a poor first impression. Treadsmart's deep clean restoration process helps to restore both the mattings appearance and its working efficiency.

But by not having a regular and appropriate deep cleaning routine, the matting will cease to work efficiently and will allow foot borne dirt to be moved onto the rest of your floors, causing potential damage and increased slip risks.

## **REGULAR MATWELL CLEANING**

Once your matting has been restored, the ideal solution to keep it looking great and working effectively, is to put Treadsmarts regular matwell cleaning programme in place. This ensures your matting is regularly deep cleaned by our trained service personnel, so it continues to offer protection to your interior floor coverings, and increases the lifespan of the product.





## SHINY & DUST FREE

Our unique Dust-Smart mops have been designed and developed by specialists in the cleaning industry, to perform more effectively than any other on the market.

The Dust-Smart system holds twice as much dust as regular dust mops and is designed to outperform standard dust control products.

The mops feature cotton fibres impregnated with a lemon scented bacteriostatic fluid. This helps trap dust and leaves no residue. The treated mop fibres ensure maximum dust cleaning, absorbing dust and dirt, leaving floors cleaner and shinier in less time with less effort.

# DUST-SMART MOP SYSTEM



Dust-Smart mops do not use water or any additional cleaning products, either before use or while using the mop offering significant savings. It also means consistently dry floors which eliminates the risks associated with wet mopping and means the area is immediately ready and safe to use.



Available in four different sizes, they can be used on all hard floors including wood, stone and vinyl, and can even be used with motorised mop machines.

Dust-Smart mops are easy to use and highly efficient in the fight against dust. Up to 50% of cleaning time can be saved, as there's no need to additionally sweep or wet wash the floor.

- Quick, easy and effective
- Suitable for all hard surfaces
- No need to sweep beforehand
- No need to wet the floor, reducing the risk of slips
- Ergonomic handle for easy, comfortable use
- Offers great savings in time and cleaning costs
- Eliminates the need to continually purchase or wash your dust control mops

Dust-Smart mops are ideal for use in all types of facilities including hotels, schools, sports halls, show rooms, offices and hospitals.



Dust-Smart mops come complete with our exchange service, so your dirty mop heads are regularly exchanged for clean ones.



It sweeps, cleans and shines all in one smooth action.



## FLOORING EXPERTS

Entrance mats help to keep your floors cleaner, drier and safer. But for floors that may already have suffered from the effects of foot borne dirt and moisture, we also offer a whole host of floor cleaning and restoration services that can help restore your floors appearance.

Our sister division, **PHS Interclean**, are experts in the cleaning, maintenance and restoration of all types of flooring on either a one off or regular maintenance basis.

- **Carpet Cleaning & Maintenance**
- **Stone Floor Cleaning & Restoration**
- **Wood Floor Cleaning & Restoration**
- **Hard Floor Cleaning**
- **Upholstery Cleaning**
- **Anti-slip flooring treatment**
- **Vinyl floor re-colouring**

For more information call us on 029 2080 9090 or visit [www.phs.co.uk/Interclean](http://www.phs.co.uk/Interclean)

# FLOOR CARE & RESTORATION

## REDUCE SLIPS

In areas where food is being prepared or drinks being served – wet, slippery floors are a common hazard.

The Bar and Kitchen Mat range includes products that are specially designed to cope with the rigours of such environments.

- **Make wet or greasy floors safer underfoot**
- **Textured surface helps prevent slips**
- **Raised surface prevents staff standing in spills**
- **Provide additional comfort for standing staff**
- **Helps prevent breakages of dropped crockery and glassware**



# BAR & KITCHEN MATS



## ANTI-BAC

This nitrile rubber mat has integral anti-microbial properties to inhibit the growth of bacteria, which when combined with the regular lift and lay service ensures it is kept clean and sanitised. It is water, grease and oil resistant and has low profile borders to ensure ease of cart traffic over the surface.



BS4790

Sizes **0.85 x 1.4m**

Thickness **9mm**

Colour ●



## HIGH DUTY

Offers excellent slip resistance and anti-fatigue properties for areas where spilt liquids and oils are a hazard. The thick rubber material also acts as an effective cushioning surface for dropped glassware or crockery, helping to reduce breakages. This mat can be cleaned by placing in a commercial dishwasher. Available as a single mat or as interlocking sections to cover longer areas.



Size **0.9m x 1.5m (edged all round or as interlocking middle or end sections)**

Thickness **12.5mm**

Colour ●



## UNIMAT

A 'drainable' rubber runner mat ideal for long bar areas where spilt liquids provide a slip hazard. Easily rolls up, making it easy to move and clean and is ideal for temporary bars or kitchens. Manufactured from hardwearing rubber for long-lasting wear.



Sizes **0.9m x 5m, 0.9m x 10m**

Thickness **10mm**

Colour ●

\*can provide coverage of any length in widths of 0.9m or 1.5m

## TAKING THE STRAIN

Standing on cold, hard concrete floors for prolonged periods of time is one of the most common causes of physical fatigue and muscular pain including backache and swollen or stiff joints. The pain caused is debilitating and as fatigue sets in, employees' productivity and concentration can be reduced, increasing the risk of workplace accidents.

### Anti-fatigue mats

- Are designed to encourage foot movement so stimulating blood circulation and changes in posture which helps reduce lower back and leg pain
- Insulate workers from cold floors, helping to reduce physical fatigue
- Provide a more comfortable environment, which in turn encourages increased concentration and productivity



# ANTI-FATIGUE MATS

# ELITE



The Elite Anti-fatigue mats' ultra hard wearing nitrile rubber construction makes it ideal for situations where staff are standing for extended periods of time. The heavy duty mat is available in a range of sizes and with the optional lift and lay service making it ideal for any situation.

Sizes **0.85 x 0.75m, 1.4 x 0.85m, 1.7 x 1.10m, 3 x 0.85m**

Colour ●



# BUBBLEMAT



Manufactured from hard wearing rubber for heavy duty areas. Ideal for use on production lines or packing stations where an operator is standing in a static position for long periods of time.

Available in two standard sizes with safety bevel edge or in an end and middle piece for bespoke longer run areas.

Mat Size **0.6m x 0.9m, 0.9m x 1.2m**

Thickness **14mm**

Colour ●

Interlocking Sections **0.6m x 0.9m end /middle piece (interlocks on 0.6m side)**



## DURASTEP

A high performance anti-fatigue mat ideal for areas where operatives are turning regularly in static positions for long periods of time, i.e. production lines or cashier stations. The fused dual layer PVC top and closed cell foam bottom layer offer excellent durability, underfoot cushioning and insulation from cold concrete floors.

Sizes **0.6m x 0.9m, 0.9m x 1.5m, 0.9m x 3.65m, 0.6m x 18.3m, 0.9m x 18.3m, 1.2m x 18.3m**

Thickness **12.5mm**

Colour ●



## FLUTED

A durable PVC fluted surface bonded to closed cell PVC foam, designed to provide anti-fatigue properties, in demanding heavy duty industrial applications. The foam back provides fatigue relief from prolonged standing, whilst the fluted surface gives added grip. The bevelled edges help prevent trips and allow easy access for trolleys.

Sizes **0.6m x 0.9m, 0.9m x 1.5m, 0.9m x 3m**

Thickness **10mm**

Colour ●



## ORTHOMAT

Manufactured from 100% closed cell PVC foam to provide a very comfortable standing surface to help reduce operator fatigue. Ideal for dry production areas, assembly lines and packing benches with medium duty use. Available in either a pebbled (conforms to slip resistance test EN 13552 category R10) or ribbed surface. Both versions are available as a safety option with bright yellow borders.



BS4790



pebbled surface only

Width options **0.6m, 0.9m**

Length options **Any up to 18.3m**

Thickness **9 mm**

Colour ● (safety option ● + ●)



## WORKING HARD

Industrial situations such as production lines and machining areas are prone to oil and debris building up on the floor, creating slip and trip hazards for the operators.

The Industrial Mats range provides a solution to these problems as the open structures of these mats allow swarf, debris and oil to pass through the mats providing a safe working floor surface, whilst also providing insulation from cold concrete floors and some fatigue relief.



# INDUSTRIAL MATS

# COMFORT & DRAINAGE



Available in solid or drainage surface design, these exceptionally hard wearing tiles are able to withstand up to 4200kgs per sq ft, so are ideal for areas that are accessed by forklift trucks. They are not adversely affected by acid, alkaline, grease, oil, organic solvents or common use chemicals, and are also suitable for use in temperatures ranging from -30°C to +90°C. With anti-slip and anti-fatigue properties, these recycled rubber tiles are ideal for demanding industrial applications, and the structure allows liquids or cables to pass freely below the mat's surface. Also available with a tough Silicon Carbide surface to give the ultimate protection against slips, ideal for areas where oils and lubricants cause slip hazards. Ramped edging also available.

<b>Sizes</b>	<b>Tile format so any size can be catered for</b>		
Tile size	<b>50cm x 50cm</b>	Edge size	<b>50cm x 10cm</b>
Thickness	<b>25mm</b>		
Colours	● (edge ● + ●)		
Grit colours	● ● ● ● ●		



# WORKSAFE



Manufactured from extremely hard wearing greaseproof rubber, it is ideal for areas in contact with animal oils, fat, grease or aggressive machine oils. The open structure allows swarf and other debris to fall through, providing a safe working top surface.

The moulded bevelled edge increases safety whilst the unique underside design prevents the mat from slipping even in oily environments.

<b>Sizes</b>	<b>0.9m x 1.5m</b>
Thickness	<b>15mm</b>
Colours	● (Black non-greaseproof ●)



# WORKSTATION



Ideal for individual workstations with medium to heavy duty use, this mat is manufactured from cross ribbed flexible PVC to give a safe slip resistant operating surface. The open weave design allows swarf and debris to fall through. The mat is supplied with contrasting coloured bevelled edging to help prevent tripping and is resistant to most industrial oils and chemicals.

Sizes **0.6m x 1.2m, 1.0m x 1.5m, 1.2m x 1.8m**

Hole size **22mm x 22mm**

Thickness **12mm**

Colours **● Edging ● ● ● ● ●**



# TREADMAT



Ideal for large areas such as production or assembly lines. The cross ribbed PVC matting has a choice of hole sizes to allow all types of swarf or industrial debris to fall through leaving the working surface clear and safe. Helps to insulate operators from cold floors during prolonged periods of standing. Optional factory fitted bevelled edging helps prevent trips and aid wheeled access. Resistant to most industrial oils and chemicals.

Sizes **0.6m, 0.9m, 1.2m (any length up to 10m)**

Thickness **12mm**

Colours **● ● ● ●**

Hole sizes Light: **30mm x 30mm** Standard: **22mm x 22mm**  
Inter: **30mm x 10mm** Heavy: **30mm x 10mm**





## SOMETHING SPECIAL

Some environments require specialist matting products – for example cleanroom or critical environments, static sensitive areas or high voltage areas.

The Specialist Mats range includes a solution for each of these environments and more.



# SPECIALIST MATS



## RUBBER MATTING

Versatile, hard wearing general purpose rubber mats with slip resistant surfaces are ideal for many applications, from laying on workbenches to protect fragile components to laying on walkways to provide insulation from cold concrete floors.



Rubber matting offers an effective solution for all manner of environments from industrial to equestrian situations.

Sizes	<b>Fine fluted: 0.9m x 10m, 1.2m x 10m</b> <b>Stable rubber: 1.2m x 1.8m</b>
Thickness	<b>Fine fluted: 3mm, 6mm</b> <b>Stable rubber: 12mm, 17mm</b>
Colour	●



## ELECTRIC SAFETY

Specifically designed for use in front of open switchboards and high voltage equipment, it helps provide safety for operators against electrical shocks.

Ribbed finish also helps provide a slip resistant surface. The 9.5mm thick product conforms to BS921/1976.

Sizes	<b>0.9m x 10m, 1.2m x 10m</b>
Thickness	<b>6mm</b> (tested to 11,000V for 450V rated working) <b>9.5mm</b> (tested to 15,000V for 650V rated working)
Colour	●



## STATIC DISSIPATIVE

Made from 100% closed cell vinyl. A tough, long lasting static dissipative mat to protect against and reduce static build up whilst offering the inherent benefits of fatigue relief. **NOT TO BE USED IN HIGH VOLTAGE AREAS.** Grounded via an integral 10mm male stud fitted to the mat, maximum performance is achieved when used with a floor mat grounding wire. Optional accessory kit available (consists of 2m mat grounding wire, 2 x heel grounders and earth bonding plug).

Sizes	<b>0.6m x 0.9m, 0.9m x 1.5m, 0.9m x 18.3m</b>
Resistance	<b>10<sup>9</sup> – 10<sup>10</sup> Ohms per sq metre (Actual)</b>
Thickness	<b>9mm</b>
Colour	●



## TAK MATS

Made from a proprietary blend of polyolefin resins, Tak mats have peel off disposable layers. Each layer has an adhesive coating that captures small particles from wheels and foot traffic, protecting the area from dust and bacterial pollution. Tak Mats are low profile, easy to install, and are available as adhesive backed pads to stick directly to the floor surface or with a loose lay reusable rigid polystyrene frame.

Sizes	<b>0.8m x 0.6m single frame (1pad)</b> <b>0.8m x 1.3m double frame (2 pads)</b> <b>0.6m x 0.76m replacement pad for frame</b> <b>0.46m x 1.17m 4 adhesive backed pads</b>
Thickness	<b>Frame plus pad 6.5mm</b> <b>Adhesive back pad 1.5mm</b>
Colours	○ ● ●



## GRIPFOOT TAPE

Non-slip abrasive grit tape gives additional grip to smooth surfaces helping to prevent slips and falls. Suitable for many applications including stair treads, ramps and walkways, entrances, loading docks, and even vehicles and boats. Hard wearing and with a self adhesive backing for ease of installation. Available in multi purpose rolls, rectangular cleats for stair treads or tiles.

Black rolls (width options)	<b>25mm, 50mm*, 102mm, 152mm*</b> <b>(All rolls are 18.3m in length)</b>
Black & clear tiles	<b>140mm x 140mm (pack of 10)</b>
Black & clear cleats	<b>152mm x 610mm (pack of 10)</b>

\*Also available in red, green, yellow, blue, white or clear



## WATER MAT

Helps to reduce the slip hazard commonly found in front of water dispensing machines by absorbing spilt liquids. This mat protects your carpets from water marks, and users from slipping on wet hard flooring. The crush resistant pile ensures that collected water quickly evaporates, whilst carbon filaments within the pile help dissipate static build up. The dimensions fit most standard water dispensers (both point of use & water coolers).

Sizes	<b>0.6m x 0.9m</b>
Cut out	<b>0.2m x 0.3m</b>
Colour	●



## PLAY SAFE

Leisure and fitness areas require specialist matting as wet areas such as pools and showers are prone to an increased chance of slips and falls whereas gyms can suffer from the noise and shock caused by heavy weights and equipment.

The Leisure Mat range provides matting that combines functionality and visual impact for each application. The wet area mats have a free draining structure to provide an excellent level of anti-slip protection whilst being comfortable for bare feet and bacteria resistant, whereas the Gym Matta provides a hard wearing surface to help cushion and protect gym floors.



# LEISURE MATS

# FLEXI-TREAD



A PVC tile ideal for use in leisure environments and wet areas such as shower rooms. Its textured surface provides an excellent slip resistant finish, with holes that allow the drainage of water. Studs on the underside provide exceptional drainage properties and the tiles interlock to cover any shape or size area. Flexi-Tread is comfortable to walk on, even when barefoot, does not support the growth of bacteria and can be easily rolled up for cleaning purposes.

Sizes	<b>Tile format so any size can be catered for</b>
Tile size	<b>30cm x 30cm (ramped edging available)</b>
Thickness	<b>13mm</b>
Colours	● ● ● ● ●



# GYM MATTA



A hard wearing PVC matting ideal for gymnasiums, weight rooms, sports centres and ice-rinks. The material cushions and helps to protect floors, absorbing both shock and noise from heavy equipment. The interlocking tile format makes it simple to install and fit any size area, whilst allowing it to be relocated with ease. The textured surface provides additional underfoot grip helping to prevent slips whilst the bevelled edges help prevent trips.

Sizes	<b>Tile format so any size can be catered for</b>
Tile size	<b>50cm x 50cm</b>
Thickness	<b>25mm</b>
Edge size	<b>50cm x 10cm</b>
Colours	● ● ● ● ● ● ● ●

# LEISURE TILES



A rubber, tile format, anti-slip drainage solution ideal for swimming pool areas and shower rooms. The tile format allows it to be used to fit any shape area, whilst the textured surface gives added grip and comfort underfoot to wet, slippery areas. The anti-microbial additive within the mat and its free draining structure combine to make it an hygienic and attractive option. Ramped edging is also available.

Sizes **Tile format so any size can be catered for**

Tile size **50cm x25cm**

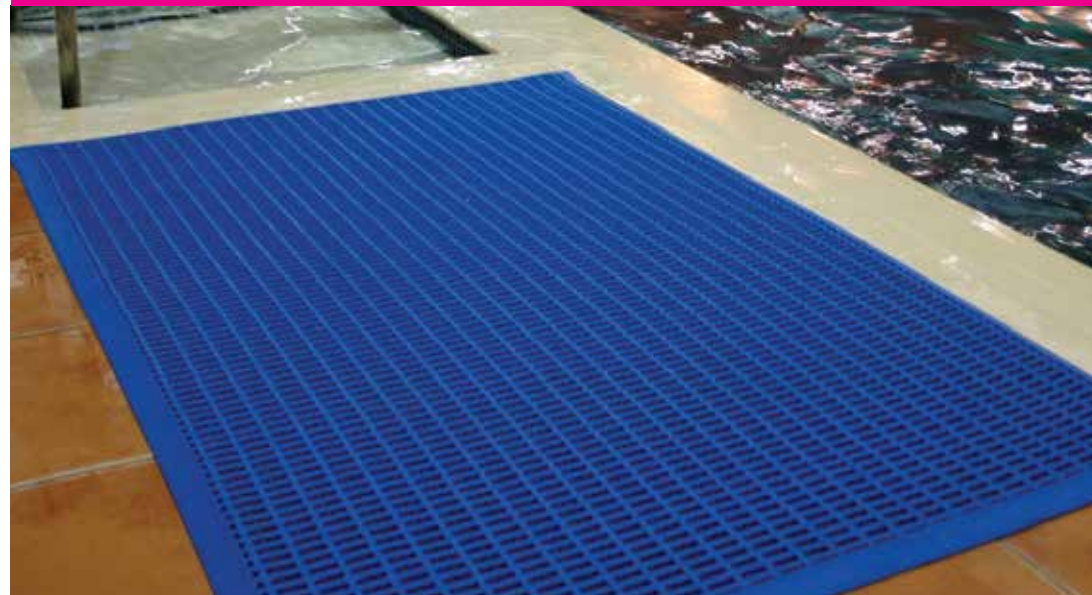
Thickness **15mm**

Edge size **0.5m x 0.06m**

Colours 



# SPORTMAT



Designed to help reduce slips in wet environments, the open cross rib design prevents water pooling on the mats surface. The surface is comfortable for bare feet and the vinyl compound does not support the growth of bacteria making it ideal for use around swimming pools and in changing rooms.

Sizes **0.6m x 1.2m, 1.0 x 1.5m**

Hole size **30mm x 10mm**

Thickness **12mm**

Colours 



# PLAYGROUND SAFETY SURFACING

Outdoor or indoor, a natural or vibrant colour scheme, our unique Matta safety surfacing provides the ideal surface for any playground, no matter what the equipment, the contours of the site or the state of the existing surface.

Our sister division, Matta Products, specialises in the supply and installation of Matta play area safety surfacing. Made from 100% recycled materials, our surfacing is wheelchair accessible, suitable for all equipment up to a critical fall height of 4.5m, free draining, flame retardant, is guaranteed for 10 years and requires next to no maintenance once installed.

- Safety Matta allows the grass to grow up through its surface, creating a greener, safer play area
- Play Matta is available in 16 colours making it easy to bring vibrancy, colour and design to a play area
- Recover Matta provides an attractive, cost effective and long term repair solution to make damaged or old surfacing look better than new
- Bouncy Matta is designed for indoor areas, offering a colourful, hygienic solution ideal for nurseries, schools and indoor play centres
- Pathway Matta offers a safer, anti-slip solution for existing pathways and in the incident of a fall can help keep injury to a minimum



# LAUNDERED ROLLER TOWELS & TOWELS



## STRONG & ABSORBENT

Cabinet Roller Towels are a low maintenance and convenient hand drying method. The 100% cotton towels are strong and absorbent, and with no waste or electricity requirement are both an economical and environmentally friendly option.

The cabinets feature an anti-jam mechanism, and contain separate compartments for clean and used sections of towel for improved hygiene. With choices available in cabinet size, colour and towel colours, there's an option to suit every environment from the prestige washroom to an industrial hand wash area.

### **Drywise Roller Towel**

Unique to PHS, Drywise offers the most hygienic roller towel available. The cabinet incorporates SteriTouch® anti-bacterial surface protection and the towel is treated with N9 Pure Silver for anti-microbial protection. The cabinet also features auto-rewind of the towel preventing unsightly drooping of the used portion of towel.

Treadsmart also offer a variety of towels from tea towels to hand towels to bath towels. The 100% cotton is both strong and absorbent, and the laundered towel service is an ideal way to ensure your business always has clean towels at the ready.

The service includes regular deliveries of freshly laundered towels, delivered direct to your site.



#### DRYWISE CABINET

Size (cm)	<b>34(w) x 28(d) x 54(h)</b>
Colours	<b>White</b>
Towel Colours	<b>White with silver edging stripe</b>
Towel size	<b>180 towel portions (37.5m length)</b>

**SteriTouch®**



#### STANDARD CABINET

Size (cm)	<b>41(w) x 25(d) x 47.5(h)</b>
Unit Colours	<b>White, Gun Metal effect, Polished Chrome, Brushed Chrome</b>
Towel Colours	<b>White with mint green stripe, Blue</b>
Towel size	<b>200 towel portions (40m length)</b>

#### MINI CABINET

Size	<b>32(w) x 17(d) x 32(h) (inc towel)</b>
Unit Colour	<b>White</b>
Towel Colours	<b>White with mint green stripe, Blue</b>
Towel size	<b>100 towel portions (20m length)</b>



#### TEA TOWELS

Size	<b>60cm x 38cm</b>
Colours	<b>White &amp; Green check</b>

#### HAND TOWELS

Size	<b>85cm x 45cm</b>
Colours	<b>White</b>

#### BATH TOWELS

Size	<b>125cm x 65cm</b>
Colours	<b>White</b>

#### BATH SHEETS

Size	<b>140cm x 90cm</b>
Colours	<b>White</b>





## CRATE RENTAL & PACKAGING

- Removal crate rental
- Removal packaging consumables
- Handling equipment
- Food trays & pool management
- Tray and pallet washing
- Retail tote sale & rental

## DATA SCANNING, STORAGE & SHREDDING

- On & off site shredding
- Records & media storage
- Scanning & imaging services
- Capture & workflow
- Digital mailroom & admin automation
- Secure document storage

## INTERIOR & EXTERIOR PLANTING

- Interior plants
- Fresh & silk flower displays
- Exterior plants
- Grounds maintenance  
& landscaping
- Christmas tree hire
- Hanging and standing baskets

## LAUNDRY EQUIPMENT

- Washing machines
- Dryers
- Ironers
- Detergents
- Laundry supplies
- Dishwashers

## MATTING & FLOORCARE

- Entrance mats & matting
- Anti-slip mats
- Anti-fatigue mats
- Floor cleaning & maintenance
- Playground safety surfacing
- Serviced dust mops

## SPECIALIST & TECHNICAL WORKWEAR

- Hi visibility workwear
- Flame retardant workwear
- Electric arc flash protection workwear
- Fully managed laundry solution & complete garment traceability

PHS Treadsmart is part of the PHS Group plc, one of the UK's leading providers of workplace services. We provide products and services that help your workplace operate smoothly and make your life as a buyer a whole lot easier. Just take a look at how we could help you...



For more information on any of our products and services, contact us on

T: 029 2080 9090

E: [productinfo@phs.co.uk](mailto:productinfo@phs.co.uk)

W: [www.phs.co.uk](http://www.phs.co.uk)

## TESTING & COMPLIANCE

- Design and installation consultancy
- Electrical safety testing
- Fire safety testing
- Gas safety testing
- Medical equipment testing
- Remedial and installation

## WASHROOM SERVICES

- Aircare & odour neutralising
- Baby changing range
- Handcare services
- Sanitary disposal
- Vending machines
- Water management

## WASTE MANAGEMENT

- Clinical and healthcare waste
- Chemical & hazardous waste
- Commercial waste
- Spill containment
- IT recycling
- Waste compactors & balers

## WATER MACHINES

- Watercoolers
- Cups & consumables
- High volume dispensers
- Hot water boilers
- Water fountains

## WORKPLACE CONSUMABLES

- Toilet tissue
- Hand towels
- Soap and soap dispensers
- Centrefeed
- Cloths, wipes and refuse bags
- Cleaning products & infection control





Contact us on:

T: 029 2080 9090

E: [productinfo@phs.co.uk](mailto:productinfo@phs.co.uk)

[www.phs.co.uk/treadsmart](http://www.phs.co.uk/treadsmart)

**PHS Treadsmart**

Block B, Western Industrial Estate, Caerphilly, CF83 1XH



Cert No. 8295  
ISO 9001 ISO14001

ISSUE 01/14

Crate Rental & Packaging	Data Scanning, Storage & Shredding	Interior & Exterior Planting	Laundry Equipment	Matting & Floorcare	Specialist & Technical Workwear	Testing & Compliance	Washroom Services	Waste Management	Water Machines	Workplace Consumables
--------------------------	------------------------------------	------------------------------	-------------------	---------------------	---------------------------------	----------------------	-------------------	------------------	----------------	-----------------------