

# AEL Victoriana

## Cast Iron Radiators

Cast-iron radiators  
as individual as your  
home

To suit every application,  
from a restoration project  
to a new build.

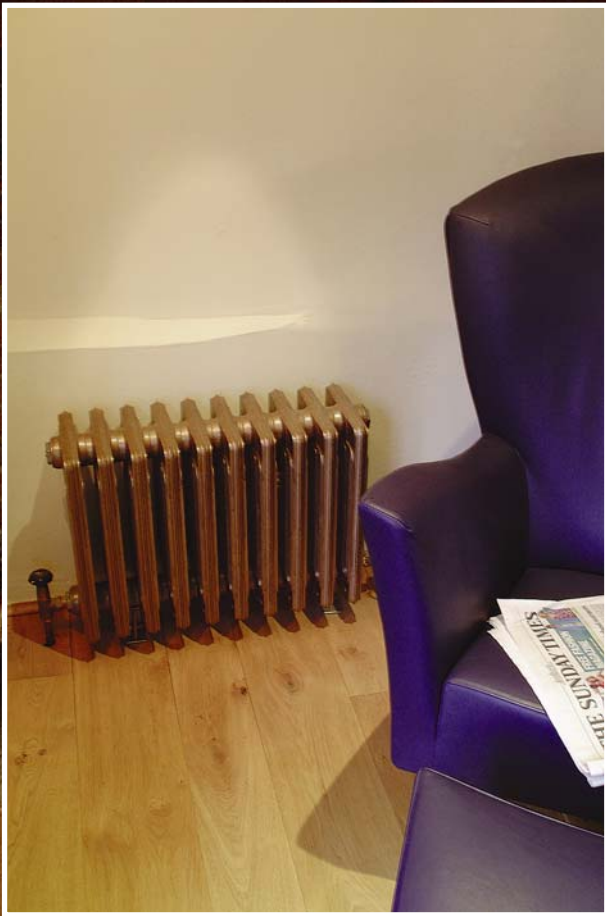


**AEL**  
HEATING SOLUTIONS





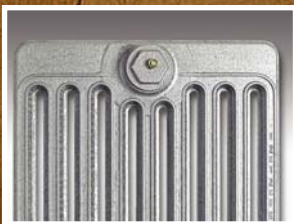
6 Column 880mm height 18 section



6 Column 430mm height 10 section



2 Column 880mm height 10 section



9 Column



6 Column



4 Column



2 Column

# AEL Victoriana

## CAST IRON RADIATORS

AEL Victoriana traditional central heating radiators are the ideal choice for Victorian and other older-style properties. Manufactured in sectional columns, they add a touch of period authenticity and a special kind of warmth and comfort that only genuine cast-iron can provide.

### **As individual as your home**

From the tall and slim hallway radiator to the short and squat window seat, the sectional column concept enables AEL Victoriana radiators to be assembled to meet your individual requirements. With an extensive selection of sizes we can build a radiator to suit every application, from a restoration project to a new build. Radiators are supplied with a comprehensive range of brackets and mountings to give you total fixing flexibility.

### **Optional Painted Finishes**

The Victoriana radiator range is supplied in a primer finish as standard or in an optional specified RAL colour. A colour swatch brochure with a choice of over 200 colours is available and can be viewed on the home page of our website [www.aelheating.com](http://www.aelheating.com) or it can be posted out to you by contacting our head office Tel:01928 579068. Please note, for a professional finish cast iron radiators should always be powder coated at a low bake .

### **Sizing and selection**

The nine Victoriana models offer the choice of 5 heights, ranging from 300mm to 880mm, and 4 depths, ranging from 70mm (2 columns) to 340mm (9 columns). Each section is 60mm wide and provides different levels of heat output, according to its height and depth. The number of columns, either 2, 4, 6 or 9 determine the depth Section.

AEL Victoriana radiators can be installed in lengths of up to 60 sections (3.6 m) but, because of the sheer weight and size, it is more practical to supply them in units of 10 sections or parts there after.

## AEL Victoriana Technical Data per Section.

Section No.	Height	Depth	Weight	Water Content	Tapping Centres	Output 56°C
V9/30 (9 Column)	<b>300 mm</b> 11.81 ins	<b>340 mm</b> 13.29 ins	<b>7.60 Kg</b> 16.75 lbs	<b>1.03 ltrs</b> 0.22 gals	<b>220 mm</b> 8.66 ins	<b>127 Watts</b> 434 Btu/h
V6/43 (6 Column)	<b>430 mm</b> 16.93 ins	<b>225 mm</b> 8.86 ins	<b>6.90 Kg</b> 15.21 lbs	<b>0.78 ltrs</b> 0.17 gals	<b>350 mm</b> 13.78 ins	<b>118 Watts</b> 402 Btu/h
V4/58 (4 Column)	<b>580 mm</b> 22.83 ins	<b>146 mm</b> 5.75 ins	<b>6.10 Kg</b> 13.45 lbs	<b>0.71 ltrs</b> 0.15 gals	<b>500 mm</b> 19.69 ins	<b>108 Watts</b> 368 Btu/h
V6/58 (6 Column)	<b>580 mm</b> 22.83 ins	<b>225 mm</b> 8.86 ins	<b>9.10 Kg</b> 20.06 lbs	<b>1.00 ltrs</b> 0.22 gals	<b>500 mm</b> 19.69 ins	<b>158 Watts</b> 540 Btu/h
V4/68 (4 Column)	<b>680 mm</b> 26.77 ins	<b>146 mm</b> 5.75 ins	<b>6.70 Kg</b> 14.77 lbs	<b>0.78 ltrs</b> 0.17 gals	<b>600 mm</b> 23.62 ins	<b>127 Watts</b> 434 Btu/h
V6/68 (6 Column)	<b>680 mm</b> 26.77 ins	<b>225 mm</b> 8.86 ins	<b>10.4 Kg</b> 22.93 lbs	<b>1.16 ltrs</b> 0.25 gals	<b>600 mm</b> 23.62 ins	<b>179 Watts</b> 610 Btu/h
V2/88 (2 Column)	<b>880 mm</b> 34.65 ins	<b>70 mm</b> 2.75 ins	<b>4.70 Kg</b> 10.36 lbs	<b>0.52 ltrs</b> 0.11 gals	<b>800 mm</b> 31.50 ins	<b>97 Watts</b> 330 Btu/h
V4/88 (4 Column)	<b>880 mm</b> 34.65 ins	<b>146 mm</b> 5.75 ins	<b>8.80 Kg</b> 19.40 lbs	<b>0.94 ltrs</b> 0.20 gals	<b>800 mm</b> 31.50 ins	<b>163 Watts</b> 556 Btu/h
V6/88 (6 Column)	<b>880 mm</b> 34.65 ins	<b>225 mm</b> 8.86 ins	<b>13.4 Kg</b> 29.54 lbs	<b>1.43 ltrs</b> 0.31 gals	<b>800 mm</b> 31.50 ins	<b>233 Watts</b> 795 Btu/h

### Correction Factors

Example: Water Temp IN 82°C:Temp OUT 71°C:AV Mean Temp 76.5°C:Room Amb Temp 20°C = Δ<sup>t</sup> 56 °C

Δ <sup>t</sup> °C	0	1	2	3	4	5	6	7	8	9
30	0.47	0.49	0.51	0.53	0.55	0.56	0.58	0.60	0.62	0.64
40	0.66	0.68	0.70	0.72	0.74	0.76	0.78	0.80	0.83	0.85
50	0.87	0.89	0.91	0.93	0.96	0.98	1.00	1.02	1.04	1.07
60	1.09	1.11	1.13	1.16	1.18	1.20	1.23	1.25	1.27	1.30



Top Retaining Stays



Standard Cast floor support Height 57mm



Tiger Claw (optional) Height 70mm



Antique brass thermostatic and lockshield valves  
See our radiator valves brochure for the full selection



Antique brass feed pipe & shroud x2 set



Chrome air vent



Joining nipple



End plug



Air vent & tapping bush

### A selection of fittings & feet available shown above

AEL Victoriana Radiators are supplied complete with all fittings including feet.  
If the required radiator exceeds 10 sections, a joining key will need to be purchased.

All dimensional drawings of radiators and valves for pre installing pipework can be viewed on our website [www.aelheating.com](http://www.aelheating.com)

**AEL**  
HEATING SOLUTIONS

HEAD OFFICE: 4 Berkeley Court, Manor Park,  
Runcorn, Cheshire, WA7 1TQ  
Tel: 01928 579068 Fax: 01928 579523  
e-mail: [sales@aelheating.com](mailto:sales@aelheating.com)

AEL reserve the right to alter designs and specifications without prior notice

Plate Heat Exchanger Packages    Gas fired Condensing Boilers    Cast Iron Sectional Boilers    High Output Tubular Aluminium Steel Radiators    Designer Bathroom Radiators    Corgi Approved Engineers

Victoriana  
Cast Iron Radiators