



The Quality Timber Merchants

Sheet Material & Insulation



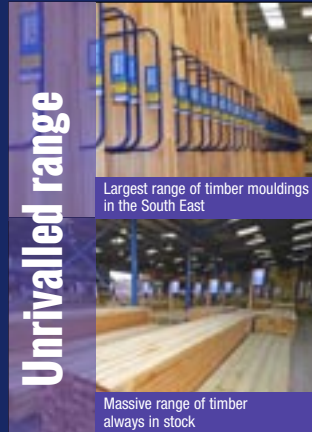
Product range:

Blockboard
Chipboard
Claddings
Cut to size Sheet Material
Decorative Boards
Decking
Doors
Engineered Timber
Fencing
Fire Rated Boards
Flooring
Glulam Laminated Beams
Hardboard
Hardwood
I Beam Joists
Insulation
Joinery
Laminates
Landscape Timber Sleepers
MDF Boards
Melamine Faced and
Wood Veneered Chipboard
Oriented Strand Board
Pine Board
Plasterboard
Plywood
Sawn Softwood
Sheds
Staircase Parts
Softwood Mouldings
Softwood Planed
Thermowood
Timber Buildings
Truss Rafters
Velux
Worktops
Windows

Timber Accessories

Adhesives
Bolts
Brackets
Decorators Aids
Door and Window furniture
Fixings
Hand Tools
Hangers
Ironmongery
Locks and Security
Mastics
Nails
Paint
Power Tools
Screws
Woodcare Products

80 years of supplying excellent quality timber and all that goes with it.



Why choose Champion for your Timber?

We're the South East's leading independent timber specialists with over 80 years experience of supplying the building trade.



Only items identified as such on the Invoice are PEFC certified



Only items identified as such on the Invoice are FSC® certified

Quality of product

- For our Softwood Planed Timber and Mouldings, we only use prime quality timber, then re-grade and machine it at our extensive Edenbridge mill to meet our own stringent standards. This is sourced and imported from the most responsibly managed Scandinavian forests.
- On-going investment in technology ensures quality, accuracy, consistency and with our Planed Timber and Mouldings, a super smooth finish. This guarantees you minimal preparation and wastage, so you save time and money.

Range and breadth of stock

- Machining our own timber ensures all of our branches carry a vast range of profiles and extensive stocks, all properly kiln dried. This ensures a continual supply of stock always ready to go for your next job.
- Our range of around 15000 timber and timber related products ensures more choice and provides a credible single source solution saving you valuable time and money.

High standards of customer service

- Champion employs helpful, knowledgeable, motivated staff who benefit from on-going training and development continuously improving our customer service.
- Unusual or 'one off' jobs are no problem as we offer a prompt machine-to-order service from our own mills.
- Reliable, local deliveries, please contact your local branch for more details.
- Order online on our website

Always keeping ahead

- As an independent company, we anticipate and react quickly to changing customer demands and product improvements.
- We comply with all British and International regulations and guidelines regarding sustainability of timber resources and have a clearly defined environmental policy.
- Branches across London, Surrey and Kent.

To obtain an estimate or to place an order there are five easy options:

- 1 Visit your local branch, we're ready to serve you.
- 2 Telephone your local branch, we're ready for your call.
- 3 Fax your requirements to your local branch.
- 4 Email your local branch with your request or order.
- 5 Online at: www.championtimber.com

PLEASE NOTE WE ACCEPT:
Visa, Mastercard, Switch/Maestro,
Branch details are on the reverse of this brochure.



CHAMPION at your SERVICE



- WE SELL ONLINE - www.Championtimber.com
- WE DELIVER FREE
- WE CUT SHEET MATERIALS
- WE MATCH & MACHINE TO YOUR PROFILE
- WE CUT TIMBER TO SIZE
- WE OFFER EXPRESS COLLECTIONS
- WE GRADE
- WE SELECT
- WE SORT
- WE PLANE
- WE CAN OBTAIN SPECIAL ITEMS FOR YOU
- WE CAN QUOTE BULK ITEMS
- WE OFFER FULL TRADE DISCOUNTS
- WE REJECT WHAT OTHERS ACCEPT
- WE WANT YOUR BUSINESS!

Contents

Insulation Products

Rockwool Roll	04
Rockwool RWA45	
Semi Rigid Slabs	04
Rockwool Cavity Wall Batts	04
Glass Fibre Rolls	04
Celotex GA3000Z,	
Therma-Break and XR3000	05
Tri-Iso Super 10	05
Thinsulex	05
Expanded Polystyrene	06
Superquilt	06
Celotex Flat Roof Deckboard	07
Monarfloor	07

Fire Rated Sheet Material

Viroc, Versapanel, Superflex or similar	08
Supalux	08
MDF FR Euro Class B & C	08
WBP Hardwood Plywood	
FR Euro Class B & C	08

Water & Fire Resistant Sheet Material

Hardibacker	08
-------------	----

Plasterboard & Accessories

Standard	09
Foil Backed Vapour Check	09
Plank	09
Soundshield	09
Thermal Laminate	09
Phenolic Laminate	10
Moisture Resistant	10
Firecheck	10
Drywall Screws	10
Coving	10
Accessories	10

Chipboard

Standard	11
Flooring Grade T & G Type P5	11
Oriented Strand Board (OSB)	11

Plywood

WBP External Hardwood Throughout Plywood	11
Hardwood Faced Plywood	11
Flexible	12
Construction	12
T & G Flooring	12
Other Plywood	12
Marine	12

Pre-Cut Handi-Panels

WBP Hardwood Plywood	12
MDF	12

Medium Density Fibreboard (MDF)

Standard	13
Moisture Resistant	13
Medex Exterior	13
Bead & Butt Primed	13
Flexible	13

Decorative MDF

Melamine 2 Sides	14
Lacquered 1 Side	14
Wood Veneered	14
Wood Veneered Edging	15

Melamine Faced Chipboard

Iron-on edging	15
----------------	----

Pre Glued Wood Veneer

Bonded Laminates	15
------------------	----

Floor Protection Board

	15
--	----

Hardboard

Standard	16
Insulation Board	16

Pinboard	16
Sundeala 'K'	16
Screen Panel	16
Solid Wood Panel	
Pine Panel	16
Pine Stringer	16
Pine Stair Tread	16
Oak Panel	16
Worktops	
Postform Laminate	17
Solid Hardwood	17

Branch Maps & Contact Details

Back Cover

CE Certification and Marking of Panel Products and Insulation

So as to introduce universally accepted standards and thereby make trading easier between member states, the European Union has introduced CE marking. The CE mark is confirmation that a product has been independently tested and certified as complying with the new product standard and is 'fit for the purpose' for which it is intended.

For panel products and insulation, the Construction Panel Directive (CPD) was set up by the industry to set standards for testing and essential requirements that should be considered where relevant, these being

- **mechanical resistance and stability**
- **hygiene, health and the environment**
- **protection against noise**
- **safety in use**
- **safety in case of fire**
- **energy, economy and heat retention**

The CE mark does not necessarily have to appear on every board, but can still be sold as CE or CPD compliant. If official written confirmation is required of compliancy, contact the Buying Department at New Malden Head Office on 020 8949 1621. Further on in this brochure, those products that are CE/CPD compliant are identified as such under their respective headings.

Insulation Products

ROCKWOOL

Manufactured from molten volcanic rock, Rockwool is:

- fire resistant
- water repellent
- chemically inert
- rot and vermin proof
- lightweight, easy to use and maintenance free
- retains its thickness
- ideal for uses requiring thermal insulation and sound absorption
- all Rockwool products are CE/CPD compliant as 'fit for purpose'



ROCKWOOL ROLL

Lightweight insulation mats in a roll. Suitable as insulation for:

- roof spaces in domestic, commercial and industrial buildings
- underfloor
- suspended ceilings, also improving acoustic performance



Code	Description (perforated for cutting to 400mm)
100RB	100mm Rollbatts 1/4.8m x 1200mm Split 3/400mm
150TP3	150mm Rollbatts 1/3.65m x 1200mm Split 3/400mm

For more information visit www.rockwool.co.uk

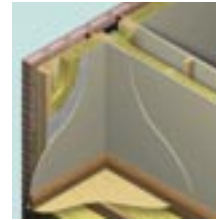


* Free delivery over a wide area please ask for more details.

ROCKWOOL RWA45 SEMI RIGID SLABS

Lightweight semi-rigid slabs, being denser and more thermally efficient, thickness for thickness than the roll material.

- use for thermal insulation of floors, walls and roofs
- easy to cut with a sharp knife
- size makes it ideal for fitting between rafters (at 600mm centres) on a pitched roof



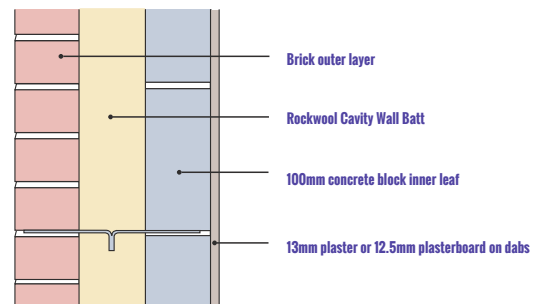
Code	Description
RWA45	1200mm x 600mm x 50mm Rockwool RWA45 Insulation 9 Slabs
RWA45100	1200mm x 600mm x 100mm Rockwool RWA45 Insulation 4 Slabs

ROCKWOOL CAVITY WALL BATTS

Installed in the cavity during build up of the wall.

- completely reliable, maintenance free and cost effective
- size designed to correspond to the vertical spacing of the wall tie therefore no additional fixings required

Code	Description
50CWB	1200 x 455 x 50mm Cavity Wall Batts (12/slabs)



GLASS FIBRE INSULATION ROLLS

Manufactured from glass fibre bonded with a synthetic resin:

- classed as non-combustible, achieving Class 1 Surface Spread of Flame
- rot and vermin proof
- lightweight, easy to use and maintenance free
- ideal for thermal insulation of roofs, walls and suspended floors
- because of its fire resistance and sound absorption qualities, used for suspended ceilings and lining internal partitioning
- CE/CPD compliant as 'fit for purpose'

Code	Description
100SSLR	100mm Isover Spacesaver Loft Roll (10.46m ²)
170SSLR	170mm Isover Spacesaver Loft Roll (6.25m ²)



Insulation Products

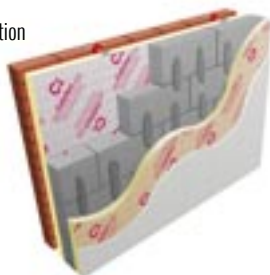
CELOTEX tuff-R ZERO GA3000Z, Therma-Break and Extra-R XR4000

A multi-purpose insulation board made up of rigid polyisocyanurate (PIR) modified polyurethane foam blended with hydrocarbon blowing agents yielding a board with zero Ozone Depletion Potential. The foam is faced with reflective foil both sides as a vapour barrier.

- easily cut with a knife or saw
- lightweight adding no load to the structure
- has nearly twice the thermal efficiency compared to normal insulation, therefore space saving
- stable, strong, durable and rot proof
- achieves Class 1 Surface Spread of Flame
- manufacturing process complies with legislation to reduce Global Warming
- CE/CPD compliant as 'fit for purpose'

Applications include:

- loft conversions
- pitched roof in between and under rafters
- lining of timber frame and masonry walls
- floor insulation



Code	Description
Therma-Break	
8412TR	2400 x 1200 x 12mm Nom.
8425TR	2400 x 1200 x 25mm Nom.
8430TR	2400 x 1200 x 30mm Nom.
8440TR	2400 x 1200 x 40mm Nom.
Tuff-R Zero	
8450TR	2400 x 1200 x 50mm Nom.
8460TR	2400 x 1200 x 60mm Nom.
8465TR	2400 x 1200 x 65mm Nom.
8470TR	2400 x 1200 x 70mm Nom.
8475TR	2400 x 1200 x 75mm Nom.
8480TR	2400 x 1200 x 80mm Nom.
8490TR	2400 x 1200 x 90mm Nom.
84100TR	2400 x 1200 x 100mm Nom.
Extra-R XR4000	
84120TR	2400 x 1200 x 120mm Nom.
84130TR	2400 x 1200 x 130mm Nom.
84140TR	2400 x 1200 x 140mm Nom.
84150TR	2400 x 1200 x 150mm Nom.

SELF ADHESIVE ALUMINIUM FOIL TAPE

For covering butt joints on Celotex, Tri-Iso, Superquilt and Framefoil

Code	Description
20193065	75mm wide x 45m long
20134693	100mm wide x 45m long

TRI-ISO SUPER 10

Tri-Iso Super 10 is a lightweight multi-composite insulation made up of 19 alternating layers of closed cell foam and reflective films, yet it is only 30mm thick.

- thermal efficiency equivalent to 210mm thick (U-Value 0.19 W/m²K) mineral wall insulation as independently certified by BM TRADA
- ensures the continuous insulation, weather and air-tightness of roofs and ridges
- minimises thermal bridging around roof windows
- no need for a vapour barrier
- space saving element particularly lends itself to loft conversions
- quick to install using a staple gun
- durable and tear resistant yet cuts easily with scissors
- no irritant dust or fibres when cutting and installing
- CE/CPD compliant as 'fit for purpose'



Code	Description
30TIS1016	1.6m x 10m (16m ²) 30mm Tri-Iso Super 10 Plus

THINSULEX

Across-rafter multi-foil insulation for new build, extensions, conversion and refurbishment work, etc.

Code	Description
30T10	30mm thick 10m x 1.2m Roll (12m ²) Thinsulex Insulation

Insulation Products

See over on page 6 for more insulation products...

Insulation Products

SUPERQUILT

A thin multi-layer insulation quilt.

Superquilt multi-layer insulation blanket for roofs, walls and floors

- Fully certified and tested to BR443
- High thermal resistance
- Class 1 surface spread of flame
- Keeps your house cooler in the summer and warmer in the winter
- Fast and simple installation
- 1.5m x 10m, 40mm thick

Code	Description
25SQ10	40mm Superquilt 1.5m x 10m Roll

EXPANDED POLYSTYRENE STANDARD GRADE (EPS70)

A traditional, cheap and easy to use form of insulation with many applications such as:

- thermal insulation for floors, internal walls, pitched roofs tank linings etc., also packing materials
- retains its thermal characteristics indefinitely
- manufactured using environmentally friendly methods - HCFC free
- BBA Certified

Code	Description
25POLY	2400 x 1200 x 25mm
50POLY	2400 x 1200 x 50mm



* Free delivery over a wide area please ask for more details.

FLAT ROOF DECKBOARD

A combined roof deck and insulation board for flat roofs supported by timber joists such as JoistMate.

Creates a warm roof construction eliminating the need to insulate between the joists. Board comprises of 9mm OSB bonded one side to rigid polyisocyanurate foam, faced with low emissivity aluminium foil on the reverse as a vapour check liner.

- lightweight - easy to handle
- quick to lay
- plywood face suitable for a wide variety of weathering systems
- avoids the difficulty of providing ventilation through the roof void
- CE/CPD compliant as 'fit for purpose'

Code	Description
8479RDO	2400 x 1200 x 79mm Roofdeck (9mm OSB3 & PIR Celotex Board or similar)
8499RDO	2400 x 1200 x 99mm Roofdeck (9mm OSB3 & PIR Celotex Board or similar)
84119RDO	2400 x 1200 x 119mm Roofdeck (9mm OSB3 & PIR Celotex Board or similar)
84129RDO	2400 x 1200 x 129mm Roofdeck (9mm OSB3 & PIR Celotex Board or similar)

FIXINGS FOR FLAT ROOF DECKBOARD

Code	Description
21345562	126mm Fixing for 76 To 79mm Roofdeck
21347764	151mm Fixing for 96 To 99mm Roofdeck
21383045	177mm Fixing for 116 To 119mm Roofdeck
21386787	202mm Fixing for 126 To 129mm Roofdeck
23033399	8 x 135mm Big Twist Roofdeck Fixing (pack of 50)
23060258	8 x 165mm Big Twist Roofdeck Fixing (pack of 50)

MONARFLOOR ACOUSTIC FLOOR INSULATION

A range of acoustic floor insulation products to meet the airborne and impact sound requirements of Building Regulations Approved Document Part 'E'.

Monarfloor uses LRAC reconstituted foam bonded to various sub-strates depending on the requirement. This foam is stable and has a lower natural frequency than other foams for reducing sound. CE/CPD compliant as 'Fit for purpose'

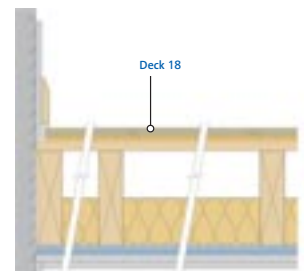
MONARFLOOR DECK 18

Designed to reduce sound transmission through existing timber floors in situations where an increase in finished floor height is not critical.

Consists of 8mm LRAC foam bonded to 18mm P5 V313 MR Chipboard. Overall thickness 26mm.

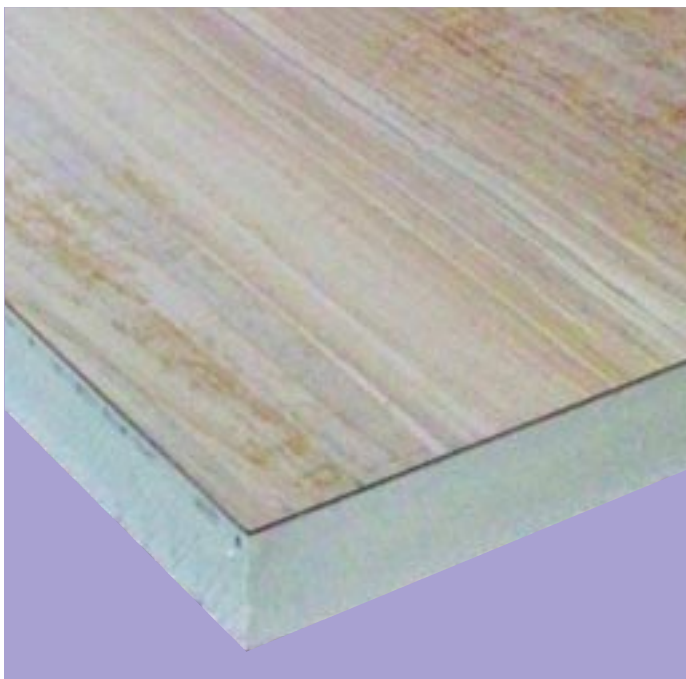
When installed as part of a sound reduction system as right, achieves:

- Airborne Sound (DnTw•Ctr) - 49dB
- Impact Sound (LnTw) - 49dB



Code	Description
8226MFAD	2400 x 600 x 26mm Monarfloor Acoustic Deck 18

For more information on acoustic insulation please ask any salesperson.



Fire Rated, Water & Fire Resistant

Fire Rated Sheet Material

VIROC, VERSAPANEL, SUPERFLEX OR SIMILAR

A cement bonded particle board.

- suitable for internal and external use
- asbestos free, no hazardous volatiles, non-aggressive dust
- cut, plane, drill, router or screw into it
- rated as Class '0'

Code	Description
846PROC	2440 x 1220 x 6mm
426TB	1200 x 600 x 6mm

SUPALUX

A high performance building board made from calcium silicate reinforced with selected fibres and fillers.

- rigid, strong yet lightweight
- non-combustible, providing up to 4 hours fire protection
- moisture tolerant, will not rot or decay
- smooth face can be decorated
- easy to handle and work
- asbestos free

Code	Description
846SL	2440 x 1220 x 6mm
849SL	2440 x 1220 x 9mm
8412SL	2440 x 1220 x 12mm

MDF FR EURO CLASS C (Formerly Class 1)

Code	Description
846MDFFR1	2440 x 1220 x 6mm
849MDFFR1	2440 x 1220 x 9mm
8412MDFFR1	2440 x 1220 x 12mm
8418MDFFR1	2440 x 1220 x 18mm

MDF FR EURO CLASS B (Formerly Class 0)

Code	Description
8412MDFFRO	2440 x 1220 x 12mm
8418MDFFRO	2440 x 1220 x 18mm

WBP HARDWOOD PLYWOOD FR EURO CLASS C (Formerly Class 1)

Code	Description
844FEPFR1	2440 x 1220 x 4mm
846FEPFR1	2440 x 1220 x 6mm
849FEPFR1	2440 x 1220 x 9mm
8412FEPFR1	2440 x 1220 x 12mm
8418FEPFR1	2440 x 1220 x 18mm

WBP HARDWOOD PLYWOOD FR EURO CLASS B (Formerly Class 0)

Code	Description
8412FEPFRO	2440 x 1220 x 12mm
8418FEPFRO	2440 x 1220 x 18mm

Water and Fire Resistant Sheet Material

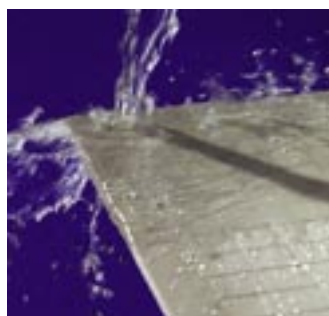
HARDIBACKER

Made from Portland cement and ground sand with cellulose additives, this board is particularly resistant to water and as such is used in bathrooms, kitchens and utility rooms.

Ideal as a backing board for tiling etc. Generally Hardibacker 250 is used for floor and worktop applications, whilst Hardibacker 500 is used for walls, although the latter can also be used for floors and worktops.

- highly recommended where high levels of moisture exist
- non-combustible, conforms to Class '0' Surface Spread of Flame
- vermin and rot proof
- strong and durable, yet light and easy to work with (wear mask)
- bonding coat on surface assists tiling
- meets ISO 8226
- British Board of Agreement (BBA) approved
- 10 year product warranty
- asbestos and formaldehyde free
- suitable for internal and external use

Code	Description
536HB	1500 x 900 x 6mm Hardibacker 250
4312HB	1200 x 800 x 12mm Hardibacker 500
23460973	Alkaline Resistant Joint Tape - 20m roll



Superior Water and Mould Resistance

Proprietary cement formula with Moldblock™ Protection provides superior mould resistance.

Plasterboard & Accessories

PLASTERBOARD

A wallboard consisting of aerated gypsum encased in a strong durable paper liner.

- used for partitioning, internal wall and ceiling linings
- Ivory face suitable for both plastering and direct decoration
- because of its unique behaviour when subject to high temperatures, classified Class 'O' Spread of Flame in England and Wales
- all Plasterboard products are CE/CPD compliant as 'fit for purpose'

SQUARE EDGE

Code	Description
639SEP	1800 x 900 x 9.5mm
6312SEP	1800 x 900 x 12.5mm
849SEP	2400 x 1200 x 9.5mm
8412SEP	2400 x 1200 x 12.5mm
8415SEP	2400 x 1200 x 15mm

Other sizes available to order.

TAPERED EDGE

Tapered edge version, used when 'Dry Lining' a wall or partition. Once the correct joint treatment has been completed, provides a flat seamless surface, without the need for plastering.

Code	Description
8412TEP	2400 x 1200 x 12.5 mm

Other sizes available to order.

FOIL BACKED VAPOUR CHECK

A tough, scuff resistant metallised polyester film on one face of the plasterboard provides the dual features of vapour check and reflective thermal insulation.

Available in square or tapered edge. Used to line ceilings, external walls and loft conversions etc.

Code	Description
6312DP	1800 x 900 x 12.5mm Square Edge
8412DP	2400 x 1200 x 12.5mm Tapered Edge

Other sizes available to order.

PLASTERBOARD PLANK

A thicker version of the standard plasterboard, used for its sound deadening qualities.

Code	Description
8219TEP	2400 x 600 x 19mm Tapered Edge

SOUNDSHIELD PLUS PLASTERBOARD

The high density of this board helps absorb sound energy

- designed for use where sound reduction is particularly important
- classified as Class 'O' Surface Spread of Flame
- complies with BS1230 Part 1, designated as Type 1
- CE/CPD compliant as 'fit for purpose'

Code	Description
8413SSPB	2400 x 1200 x 12.5mm Tapered Edge
8415SSPB	2400 x 1200 x 15mm Tapered Edge

IMPORTANT - The ivory face of Plasterboard is suitable for direct decoration or plastering.

THERMAL LAMINATE AND VAPOUR CHECK

Consists of 12.5mm plasterboard backed with a thick layer of extruded polystyrene, to form a versatile board with high thermal insulation value.

The vapour check version has the added bonus of a water resistant membrane incorporated between the polystyrene and the plasterboard. Cream face is for decorating or plastering.

- ideal for lining the inside of external walls, particularly when upgrading walls with low insulation value
- Vapour Check version important where there is a risk of damp

Code	Description
8422TLPB	2400 x 1200 x 22mm Tapered Edge
8430TLPB	2400 x 1200 x 30mm Tapered Edge
8430VCTL	2400 x 1200 x 30mm Tapered Edge Vapour Check
8440VCTL	2400 x 1200 x 40mm Tapered Edge Vapour Check

THERMAL LAMINATE PLUS

As Thermal Laminate but 12.5mm plasterboard bonded to CFC-free extruded polystyrene producing a board with lower thermal conductivity.

- allows thinner thicknesses to be used compared to standard
- extruded polystyrene provides natural vapour barrier

Code	Description
8427TLPPB	2400 x 1200 x 27mm Tapered Edge
8435TLPPB	2400 x 1200 x 35mm Tapered Edge
8440TLPPB	2400 x 1200 x 40mm Tapered Edge
45THBP	2400 x 1200 x 45mm Tapered Edge
8452TLPPB	2400 x 1200 x 52mm Thermal Laminate Plus
8455TLPPB	2400 x 1200 x 55mm Tapered Edge

Plasterboard & Accessories

PHENOLIC LAMINATE WITH VAPOUR CHECK

Uses CFC and HCFC-free phenolic foam bonded to 12.5mm plasterboard incorporating a vapour check.

Code	Description
8450PLPB	2400 x 1200 x 50mm Tapered Edge
8460PLPB	2400 x 1200 x 60mm Tapered Edge
8465PLPB	2400 x 1200 x 65mm Tapered Edge

Other sizes available to order.



MOISTURE RESISTANT BOARD (MOISTURE SHIELD)

Suitable for applications where temporary exposure to moisture may occur.

- suitable for use in bathrooms, kitchens, garages etc
- can be used as a baseboard for ceramic tiling

Code	Description
8412MRTEP	2400 x 1200 x 12.5mm Tapered Edge

Moistureshield boards should be sealed prior to plastering. (See manufacturers recommendation before plastering).

FIRECHECK BOARD (FIRESHIELD)

Offers a greater fire protection than standard Wallboard.

- meets BS1230 Part 1, Type 5

Code	Description
8412FCP	2400 x 1200 x 12.5mm Square Edge
8415FCP	2400 x 1200 x 15mm Square Edge

Other sizes, tapered edge and vapour check versions also available.

Prices on application. Other technical details also on application.

DRYWALL SCREWS

Plated self-tapping screws for fixing plasterboard to either timber or metal stud.

Boxed screws code

1000's	200's	Size
23778948	23729582	3.5 x 25mm
23727557	23764378	3.5 x 32mm
23776173	23745797	3.5 x 38mm
23724785	23737822	3.5 x 42mm
23770621	23769915	3.5 x 50mm
500's	200's	
23740792	23721302	3.5 x 60mm
23765085	23725140	4.2 x 65mm
n/a	23784457	4.2 x 75mm
n/a	23731103	4.8 x 100mm

FIBRE JOINTING TAPE (SELF ADHESIVE)

Covers over joints between boards and when used with jointing compound, dramatically reducing cracking at joints. Can also be used for internal corners.

Code	Description
23476813	Plasterboard Scrim Fibre Tape (90m Roll)

PLASTER/PLASTERBOARD BEADS AND TAPES

Code	Description
22042941	Plaster Mini-Mesh Bead - 2.4m long
22094339	Plaster Angle Bead - 2.4m long
22045713	Plasterboard Thin Coat Bead - 2.4m long
23460973	Joint Tape Alkaline Resistant 20m Roll

COVE

A gypsum core encased in a durable paper liner. Used as a cornice for the angle between walls and ceilings. The face is ready for direct decoration. Accurate 90° mitres can be cut using templates for internal or external corners.

Code	Description
100C	90mm x 3m
127C	127mm x 3m

COVE ADHESIVE

For fixing cove and as a filler for gaps between cove and wall or ceiling, mitres, nail holes etc. One bag is normally sufficient to fix 9 lengths of 90mm or 5 lengths of 127mm cove

Code	Description
CA	5kg bags

BONDING COMPOUND

An economical adhesive for fixing metal furring channel when bonding plasterboard together to form laminated partition. Also suitable for all Thermal Board.

Code	Description
BC	25kg bags

Approx. requirement per 100M² M/F channel 140-190Kg



* Free delivery over a wide area please ask for more details.

Chipboard, OSB, Plywood

Chipboard

STANDARD GRADE (EN312 TYPE P1)

- Interior use only
- CE/CPD compliant as 'fit for purpose'

Code	Description
8412C	2440 x 1220 x 12mm
8418C	2440 x 1220 x 18mm

FLOORING GRADE T&G TYPE P5 MOISTURE RESISTANT

Tongued and grooved all four edges.

Moisture Resistant - particularly suited in areas where risk of moisture and humidity. Not for external use.

- ideal for kitchens, bathrooms and extensions
- CE/CPD compliant as 'fit for purpose'
- FSC mix 70%



Code	Description
8218MRTGC	2400 x 600 x 18mm
8222MRTGC	2400 x 600 x 22mm
8218MREP	2400 x 600 x 18mm Egger Protect
8222MREP	2400 x 600 x 22mm Egger Protect
21044326	Egger D4 Flooring Adhesive 1kg Tub

Oriented Strand Board (OSB)

EXTERIOR OSB 3 CE2 + EN300

A general purpose board suitable for exterior use composed of timber wafers/strands of variable species and bonded under pressure with waterproof resin.

Made up in 3 layers, cross oriented to give maximum strength.

- specified for flat roofs, flooring and wall sheathing
- felt manufacturer's guarantee dependent on being BBA approved
- cheaper alternative to Ply
- CE/CPD compliant as 'fit for purpose'
- FSC mix 70%



Code	Description
8411OSB	2440 x 1220 x 11mm
8418OSB	2440 x 1220 x 18mm
8218OSBTG4	2400 x 600 x 18mm Exterior Tongue & Groove 4 Edges

Plywood

Highly water resistant, quality facings, conforms to EN636-3S structural use for roofing, flooring and wall sheathing.

FLOORING HARDWOOD THROUGHOUT (WBP) PLYWOOD

Long grain, hardwood veneers throughout.

- for interior or exterior use
- WBP gluing highly resistant to weather, micro-organisms and wet and dry heat
- hard wearing and very durable
- 2440 x 1220 sheets certified to EN636-3S (except 4 and 5.5mm)

Code	Description
844WBPP	2440 x 1220 x 3.6mm FSC mix 70%
846WBPP	2440 x 1220 x 5.5mm FSC mix 70%
849WBPP	2440 x 1220 x 9mm FSC mix 70%
8412WBPP	2440 x 1220 x 12mm FSC mix 70%
8415WBPP	2440 x 1220 x 15mm
8418WBPP	2440 x 1220 x 18mm FSC mix 70%
8425WBPP	2440 x 1220 x 25mm FSC mix 70%
1056WBPP	3050 x 1525 x 5.5/6mm
1059WBPP	3050 x 1525 x 9mm
10512WBPP	3050 x 1525 x 12mm
10518WBPP	3050 x 1525 x 18mm
10525WBPP	3050 x 1525 x 25mm

HARDWOOD FACED PLYWOOD - EN636-2G

For Interior or Protected exterior use. Water resistant quality facings, general purpose use. FSC 100%

Code	Description
8412HWP	2440 x 1220 x 12mm BUDGET General Purpose Hardwood Faced Plywood
8418HWP	2440 x 1220 x 18mm BUDGET Hardwood Faced General Purpose Plywood



All plywood edges should be sealed for protection

BIRCH WBP

Although WBP glue, Birch ply is made up of veneers which are officially classified as perishable. Not recommended for any exposed exterior application unless pressure preservative impregnated. Grade A face ideal for joinery requiring a good paint finish.

Code	Description
4408BP	1220 x 1220 x 0.8mm AB/B EXT Birch Plywood
55BP	1525 x 1525 x 1.5mm Finnish Birch Skin Plywood
844BP	1220 x 2440 x 4mm BB Latvian/Russian
846BP	1220 x 2440 x 6mm BB Latvian/Russian
849BP	1220 x 2440 x 9mm BB Latvian/Russian
8412BP	1220 x 2440 x 12mm BB Latvian/Russian
8415BP	1220 x 2440 x 15mm BB Latvian/Russian
8418BP	1220 x 2440 x 18mm BB Latvian/Russian
8421BP	1220 x 2440 x 21mm BB Latvian/Russian
8424BP	1220 x 2440 x 24mm BB Latvian/Russian

FLEXIBLE PLYWOOD - MOISTURE RESISTANT GLUE

- flexibility allows quick and easy creation of intricate curves and circular shapes
- used in furniture making, exhibition work, shopfitti

etc

Code	Description
845FPL	2440 x 1220 x 5mm - Long Grain
845FPC	1220 x 2440 x 5mm - Cross Grain
848FPL	2440 x 1220 x 8mm - Long Grain
848FPC	1220 x 2440 x 8mm - Cross Grain



Construction PLYWOOD - EN636-2S

Metsa Spruce or similar softwood ply construction

- conforms to EN636-2s structural use in roofing, flooring and wall sheathing
- CE/CPD compliant as 'fit for purpose'

Code	Description
849BBA	2440 x 1220 x 9mm
8412BBA	2440 x 1220 x 12mm
8418BBA	2440 x 1220 x 18mm
8424BBA	2440 x 1220 x 24mm
8418STP	2440 x 1220 x 18mm

T & G Plywood Flooring - EN636-2S

Tongued and grooved all 4 edges

- Ideal for floors, walls and ceilings
- BBA Approved for load bearing
- CE/CPD compliant as 'fit for purpose'

Code	Description
8218TG4P	2400 x 600 x 18mm
8222TG4P	2400 x 600 x 22mm



Other Plywood

Code	Description
8412PP	2440 x 1220 x 12mm WISA Hexa Grip/Smooth Birch WBP Phenol Coated Ply Hardwearing with anti slip properties
8418PP	1220 x 2440 x 18mm WISA Hexa Grip/Smooth Birch WBP Phenol Coated Ply Hardwearing with anti slip properties
8418WISA	2440 x 1220 x 18mm WISA III/III Finnish Spruce Plywood 70% PEFC Certified Ideal for formwork

Marine GRADE Plywood - BS1088

WBP glue, long grain, selected durable hardwood veneers throughout.

- Highest water resistance with durable hardwood veneer throughout, conforms only to BS1088-2003 Lloyds approved for boat building.

Code	Description
846MP	2440 x 1220 x 6mm
849MP	2440 x 1220 x 9mm
8412MP	2440 x 1220 x 12mm
8418MP	2440 x 1220 x 18mm
8425MP	2440 x 1220 x 25mm

MARINE - LLOYDS APPROVED - 20 YR GUARANTEE

Code	Description
8418LMP	2500 x 1220 x 18mm Hechthout Plywood Gaboon 11 Ply Marine BS1088

Pre-Cut Handi-Panels

CUT TO SIZE

WBP HARDWOOD PLYWOOD

Code	Description
20742409	1220* x 610* x 5.5/6mm
20796563	2440 x 610* x 5.5/6mm
20753498	1220 x 1220* x 5.5/6mm
20781224	1220* x 610* x 12mm
20735388	2440 x 610* x 12mm
20792312	1220 x 1220* x 12mm
20743703	1220* x 610* x 18mm
20795085	1220 x 1220* x 18mm
20722340	2440 x 610* x 18mm

MDF MEDIUM DENSITY FIBREBOARD

Code	Description
20734060	1220 x 610* x 6mm
20765880	1220 x 1220* x 6mm
20738181	2440 x 610* x 6mm
20774202	1220 x 610* x 12mm
20776978	1220 x 1220* x 12mm
20728366	2440 x 610* x 12mm
482418MDF	1220 x 610* x 18mm
484818MDF	1220 x 1220* x 18mm
961218MDF	2440 x 305* x 18mm
961818MDF	2440 x 458* x 18mm
962418MDF	2440 x 610* x 18mm
963018MDF	2440 x 762* x 18mm

Dimensions marked * are nominal

MDF

MDF Medium Density Fibreboard

Manufactured from wood fibres, dry-bonded with synthetic resins then compressed at high frequency. Versatile panel, wide variety of uses from general construction to furniture.

- uniform, strong, compact and stable
- smooth both faces and uniform in thickness
- can be cut and profiled, lipping not normally required
- can be screwed, glued or dowelled etc
- no grain or splintering problems
- ideal for making bespoke furniture, doors and units

It is recommended that a suitable face mask is worn when cutting or machining, and all faces and edges are sealed with MDF sealer.



STANDARD For Interior Use Only

Code	Description
842MDF	2440 x 1220 x 2/2.5mm
843MDF	2440 x 1220 x 3mm
844MDF	2440 x 1220 x 4mm
846MDF	2440 x 1220 x 6mm - FSC mix 70%
849MDF	2440 x 1220 x 9mm - FSC mix 70%
8412MDF	2440 x 1220 x 12mm - FSC mix 70%
8415MDF	2440 x 1220 x 15mm - FSC mix 70%
8418MDF	2440 x 1220 x 18mm - FSC mix 70%
8422MDF	2440 x 1220 x 22mm - FSC mix 70%
8425MDF	2440 x 1220 x 25mm - FSC mix 70%
8430MDF	2440 x 1220 x 30mm
8438MDF	2440 x 1220 x 38mm
8445MDF	2440 x 1220 x 45mm
8512MDF	2440 x 1525 x 12mm
8518MDF	2440 x 1525 x 18mm
10512MDF	3050 x 1525 x 12mm
1046MDF	3050 x 1220 x 6mm
1049MDF	3050 x 1220 x 9mm
10412MDF	3050 x 1220 x 12mm
10415MDF	3050 x 1220 x 15mm
10418MDF	3050 x 1220 x 18mm - FSC mix 70%
10425MDF	3050 x 1220 x 25mm
10430MDF	3050 x 1220 x 30mm
10518MDF	3050 x 1525 x 18mm - FSC mix 70%
10525MDF	3050 x 1525 x 25mm

Moisture Resistant (MR) MDF

For use in areas of high humidity such as kitchens and bathrooms.



Code	Description
846MRMDF	2440 x 1220 x 6mm - FSC mix 70%
849MRMDF	2440 x 1220 x 9mm - FSC mix 70%
8412MRMDF	2440 x 1220 x 12mm - FSC mix 70%
8415MRMDF	2440 x 1220 x 15mm
8418MRMDF	2440 x 1220 x 18mm - FSC mix 70%
8425MRMDF	2440 x 1220 x 25mm - FSC mix 70%
8430MRMDF	2440 x 1220 x 30mm
10418MRMDF	3050 x 1220 x 18mm

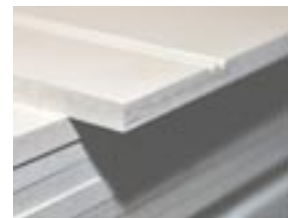
MEDEX (EXTERIOR) MDF

A fully exterior MDF, as long as finishing instructions are adhered to (copies on request).

Code	Description
8412XMDF	2440 x 1220 x 12mm
8418XMDF	2440 x 1220 x 18mm
8425XMDF	2440 x 1220 x 25mm

BEAD AND BUTT MDF - PRIMED

- Grooved at 100mm centres
- Moisture resistant MDF, ready primed to save time
- factory quality machined profiles



Code	Description
849MDFCGP	1220 x 2440 x 9mm Primed - Cross Groove - FSC mix 50%
849MDFLGP	2440 x 1220 x 9mm Primed - Long Groove - FSC mix 50%
1049MDFCGP	1220 x 3050 x 9mm Primed - Cross Groove - FSC mix 50%
1049MDFLGP	3050 x 1220 x 9mm Primed - Long Groove - FSC mix 50%

FLEXIBLE MDF

- create shapes, go round bends, very versatile
- uses include shopfitting, contoured wall features, bar fronts, columns, kitchen, bedroom and office furniture
- very cost effective

Code	Description
Short Grain (Bend 1220mm Width)	
846MDFFS	1220 x 2440 x 6mm
Long Grain (Bend 2440mm Width)	
846MDFFL	2440 x 1220 x 6mm

All MDF should be sealed when used in enclosed areas

Decorative MDF & Veneered MDF

Decorative MDF

Quality decorative veneer for use in furniture, doors, cabinet bespoke manufacture.

MELAMINE 2 SIDES

Code	Description
8418MFDFW	2440 x 1220 x 18mm Matt White

Pre-glued Edging for above

20573010	22mm x 50m Roll Matt White
----------	----------------------------

LACQUERED 1 SIDE

Code	Description
843WLMDF	2440 x 1220 x 3mm White

Cut to size service

As well as 'off the shelf' pre-cut handi-panels in plywood and MDF, Champion also offer a cut-to-size service on most sheet material items including worktops.

APPLIES TO STRAIGHT VERTICAL AND HORIZONTAL CUTS ONLY.
FOR BULK OR PRECISION CUTTING - ASK FOR A QUOTE.



* Free delivery over a wide area please ask for more details.

Veneered MDF

Quality decorative veneer for use in furniture, doors, cabinet bespoke manufacture - can be oiled, waxed or varnished.

ASH VENEERED

Code	Description
846MDFA	2440 x 1220 x 6mm - 1 side
8410MDFA	2440 x 1220 x 10mm - 2 sides
8413MDFA	2440 x 1220 x 13mm - 2 sides
8418MDFA	2440 x 1220 x 19mm - 2 sides
8426MDFA	2440 x 1220 x 26mm - 2 sides



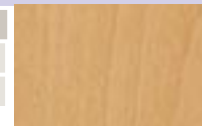
WHITE BEECH VENEERED

Code	Description
846MDFBSS	2440 x 1220 x 6mm - 1 side
8410MDFB	2440 x 1220 x 10mm - 2 sides
8413MDFB	2440 x 1220 x 13mm - 2 sides
8418MDFB	2440 x 1220 x 19mm - 2 sides
8426MDFB	2440 x 1220 x 26mm - 2 sides



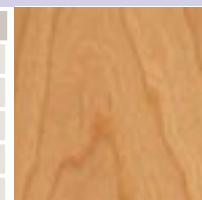
STEAMED BEECH VENEERED

Code	Description
8413MDFBS	2440 x 1220 x 13mm - 2 sides
8419MDFBS	2440 x 1220 x 19mm - 2 sides



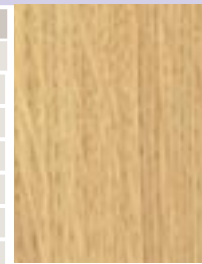
CHERRY VENEERED

Code	Description
846MDFC	2440 x 1220 x 6mm - 1 side
8410MDFC	2440 x 1220 x 10mm - 2 sides
8413MDFC	2440 x 1220 x 13mm - 2 sides
8418MDFC	2440 x 1220 x 19mm - 2 sides
8426MDFC	2440 x 1220 x 26mm - 2 sides



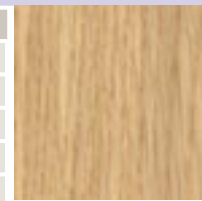
QUARTER CUT OAK VENEERED

Code	Description
844MDFO	2440 x 1220 x 4mm - 1 side
846MDFO	2440 x 1220 x 6mm - 1 side
8410MDFO	2440 x 1220 x 10mm - 2 sides
8413MDFO	2440 x 1220 x 13mm - 2 sides
8418MDFO	2440 x 1220 x 19mm - 2 sides
10418MDFO	3050 x 1220 x 19mm - 2 sides
8426MDFO	2440 x 1220 x 26mm - 2 sides



CROWN CUT OAK VENEERED

Code	Description
846MDFCO	2440 x 1220 x 6mm - 1 side
8410MDFCO	2440 x 1220 x 10mm - 2 sides
8413MDFCO	2440 x 1220 x 13mm - 2 sides
8418MDFCO	2440 x 1220 x 19mm - 2 sides
8426MDFCO	2440 x 1220 x 26mm - 2 sides



PINE VENEERED

Code	Description
846MDFPSS	2440 x 1200 x 6mm - 1 side
8410MDFP	2440 x 1220 x 10mm - 2 sides
8413MDFP	2440 x 1220 x 13mm - 2 sides
8418MDFP	2440 x 1220 x 19mm - 2 sides



Veneered MDF

MAPLE VENEERED

Code	Description
846MDFM	2440 x 1220 x 6mm - 1 side
8410MDFM	2440 x 1220 x 10mm - 2 sides
8413MDFM	2440 x 1220 x 13mm - 2 sides
8418MDFM	2440 x 1220 x 19mm - 2 sides
10418MDFM	3050 x 1220 x 19mm - 2 sides
8426MDFM	2440 x 1220 x 26mm - 2 sides



CROWN CUT SAPELE VENEERED

Code	Description
846MDFS	2440 x 1220 x 6mm - 1 side
8410MDFS	2440 x 1220 x 10mm - 2 sides
8413MDFS	2440 x 1220 x 13mm - 2 sides
8418MDFS	2440 x 1220 x 19mm - 2 sides
10418MDFS	3050 x 1220 x 19mm - 2 sides
8426MDFS	2440 x 1220 x 26mm - 2 sides



QUARTER CUT WENGE VENEERED

Code	Description
846MDFW	2440 x 1220 x 6mm - 1 side



BLACK AMERICAN WALNUT VENEERED

Code	Description
846MDFWB	2440 x 1220 x 6mm - 1 side
8413MDFWB	2440 x 1220 x 13mm - 2 sides
8419MDFWB	2440 x 1220 x 19mm - 2 sides
8426MDFWB	2440 x 1220 x 26mm - 2 sides



EDGING - 50m ROLLS - REAL WOOD PRE-GLUED

Code	Description
20596996	19mm/22mm Ash
20523169	19mm/22mm Beech
20525620	19mm/22mm Steamed Beech
20548209	19mm/22mm Cherry
20550301	19mm/22mm Sapele
20598921	19mm/22mm Oak
20538361	30mm White Oak
20547530	19mm/22mm Pine
20568634	19mm/22mm Maple
20580926	19mm/22mm Walnut

Pre-Glued Wood Veneer

Iron-on self-adhesive wood veneers. Unfinished to stain or varnish.

Code	Description
22315502	2500 x 300mm Cherry Type Wood Veneer
22327239	2500 x 300mm Pine Type Wood Veneer
22332431	2500 x 300mm Ash Type Wood Veneer
22344489	2500 x 300mm Teak Type Wood Veneer
22362056	2500 x 300mm American Walnut Type Wood Veneer
22366078	2500 x 300mm Sapele Type Wood Veneer

22371621	2500 x 300mm White Oak Type Wood Veneer
22397591	2500 x 300mm S/Beech Type Wood Veneer

Melamine Faced Chipboard Lipped two long edges

Chipboard core used is super smooth 3 layer construction.

- surface finish ensures no chips are 'grinning' through the surface
- boards are bonded for life
- melamine used is classed as durable

WHITE MELAMINE FACED

Code	Description
2440mm length	
15-16mm thickness	
20574918	2440 x 152mm
20572136	2440 x 228mm
20520748	2440 x 305mm
20569365	2440 x 381mm
20545260	2440 x 457mm
20566593	2440 x 531mm
20563820	2440 x 610mm

Iron-on Edging Strip

Code	Description	
20575267	19mm White Melamine IE811	10m roll
20573010	22mm Matt White	50m roll



Floor Protection Board

PROTECTOR BOARD

A low priced plain board for protecting floors whilst wet trades etc are on site.

Code	Description
842PBBP	2440 x 1220 x 2mm Plain Black Protector Board
24761710	2440 x 1220 x 2mm Translucent White Fire Rated Protector Board
24757737	2440 x 1220 x 2mm Translucent White Protector Board
24701662	2440 x 1220 x 4mm Translucent White Protector Board

Hardboard

STANDARD

A dense, highly compressed wood fibre sheet material, very smooth on one side with a mesh pattern on the reverse.

- 70% PEFC certified

Code	Description
84H	2440 x 1220 x 3.2mm
42H	1220 x 610 x 3.2mm

INSULATION BOARD

Low density fibre board faced one side with cream paper, which can be painted. Interior use only.

Code	Description
8412I	2440 x 1220 x 12.7mm

PINBOARD

A medium density board (not to be confused with MDF) ideal for notice boards and train set bases.

Code	Description
849P	2440 x 1220 x 8/9mm

SUNDEALA 'K' BOARD

A medium density board (not to be confused with MDF) ideal for notice boards and train set bases.

Code	Description
846SUN	2440 x 1220 x 6mm
849SUN	2440 x 1220 x 9mm
8412SUN	2440 x 1220 x 12mm

Screen Panel

Decorative perforated patterns on high density fibreboard (HDF)

- White primed ready for decoration
- creates a wide range of design possibilities
- use for making dividers, screening, shutters, radiator cabinets and shopfitting etc

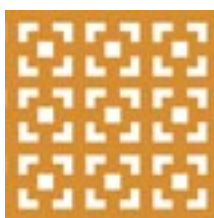
Code	Description
23154049	1830 x 610 x 3mm Sevilla / Oregon White 110
23153660	1830 x 610 x 3mm Paris / Fleur de Lys White 170
23199880	1830 x 610 x 3mm Malaga / Dakota White 140
23140172	1830 x 610 x 3mm Valencia / Nevada



SEVILLA 110
OREGON



PARIS 170
FLEUR DE LYS



MALAGA 140
DAKOTA



VALENCIA
NEVADA

Solid Pine Panel

Edge Laminated

Manufactured using Scandinavian Redwood Pine, not the cheaper less attractive spruce. Constructed from narrow widths of kiln dried timber averaging around 12% moisture content, which is then edge-glued together achieving a very strong board, in dimensions wider than can be naturally grown.

- cut it, carve it, shape it ...no need for edging strips
- used for making furniture, built-in wardrobes, worktops, shelving, stair treads etc

IMPORTANT

To maintain stability we recommend all surfaces and all edges after cutting and shaping are sealed with either the appropriate coats of paint or 2-3 coats of good quality waterproof polyurethane or varnish. Pine Board is not suitable for exterior use. Do not allow this product to stand in a centrally heated environment without having first sealed and fixed.

17/18mm THICK

Code	Description
24348430	1.2m 300mm x 17/18mm
24364676	1.2m 400mm x 17/18mm
24352550	1.2m 500mm x 17/18mm
24327510	1.2m 600mm x 17/18mm
24321600	1.8m 300mm x 17/18mm
24324373	1.8m 400mm x 17/18mm
24375764	1.8m 500mm x 17/18mm
24327152	1.8m 600mm x 17/18mm
24332699	2.4m 300mm x 17/18mm
24384087	2.4m 400mm x 17/18mm
24335461	2.4m 500mm x 17/18mm
24338240	2.4m 600mm x 17/18mm

27/28 THICK

Code	Description
24389624	1.2m x 300mm
24366373	2.4m x 600mm

33mm THICK PINE - STRINGER BLANK

Code	Description
151133TLM	4.47m x 270mm

28mm THICK PINE STAIR TREAD - BULLNOSED

Code	Description
91128TLM	2.7m x 270mm

Solid European Oak Panel

Edge Laminated

An Oak version of the Pine panel.

- With these panels wide widths of solid Oak are now achievable - stable, economical and a lot less work
- Solid Oak throughout - cut it, carve it, shape it ... no need for edging strips

17/18mm THICK

Code	Description
24375177	1.5m x 600mm
24371995	1.8m x 600mm
24391665	1.8m x 600mm x 25mm
24384964	2.1m x 600mm
24358125	2.4m x 600mm

Postform Laminated & Hardwood Worktops

Laminated Worktops

High pressure laminate bonded to a high quality chipboard core.

- meets BS3794
- highly scratch resistant
- alcohol, cosmetic and household chemical resistant
- front underside edge sealed to resist water
- out performs cheaper quality worktops

40mm THICK	
Code	Description
24634328	3000 x 600 x 40mm Polyrey Odyssey White Worktop

Solid Hardwood Tops

Manufactured using solid hardwood blocks, finger jointed, then high frequency glued and sanded to give a uniform thickness. We offer a range of oils and finishes suitable for use where food is being prepared.

SOLID HARDWOOD - 26/27mm THICK	
Code	Description
24648976	3000 x 650 x 27mm Beech A/B Grade
24692274	3000 x 650 x 27mm Oak A/B Grade
SOLID HARDWOOD - 40/42mm THICK	
Code	Description
24633604	3000 x 650 x 40mm Beech A/B Grade
24693318	3000 x 900 x 40mm Beech A/B Grade
24683173	4000 x 650 x 40mm Beech A/B Grade
24661331	3000 x 650 x 40mm Oak A/B Grade
24672429	3000 x 900 x 40mm Oak A/B Grade
24680745	4000 x 650 x 40mm Oak A/B Grade

Other types available. Please ask for more details.



OAK



BEECH

All illustrations are intended as a guide only. Specifications subject to change. We have access to technical information if assistance required.



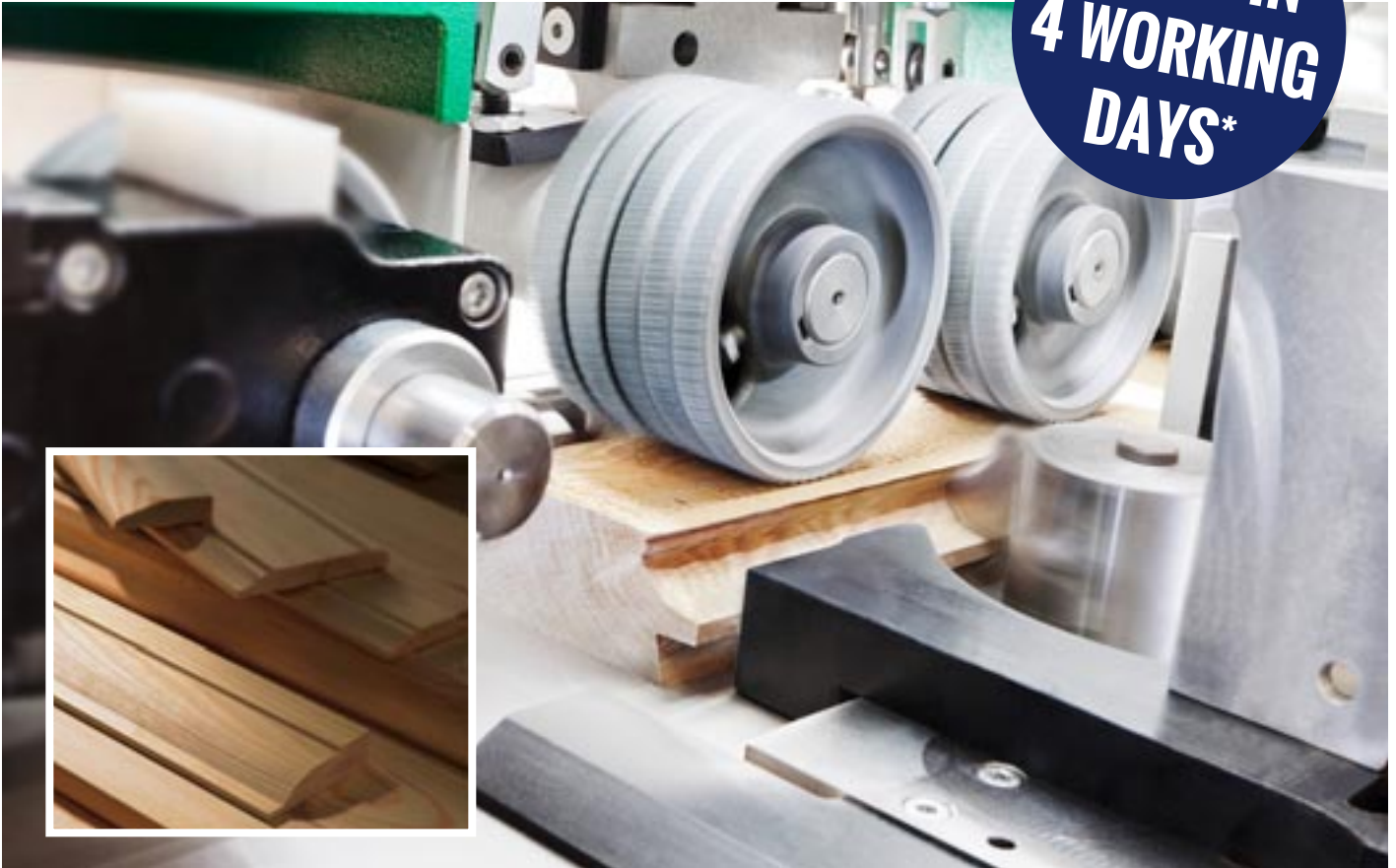
Champion stock all the fixings, fittings, finishes and tools to go with timber



Can't find exactly what you are looking for?

With our custom profile matching service you can have precisely the profile and size you need.

**READY IN
4 WORKING
DAYS***



Whether it's matching an existing profile or creating a custom profile design not available from Champion, we can help. Using the latest technology in our Edenbridge Mill, all we need is either a sample of the profile to be matched, or a drawing with precise measurements so we can manufacture an exact match. We can also tailor any of our stock profiles to suit your precise measurements.

It has never been easier to create a bespoke profile which can be co-ordinated across all your requirements including skirting, architraves, door frames, dado rail, picture rail, shelving and window boards.

*We can produce your moulding, the minimum order is 1.8m, which will be available at our New Malden branch in 4 working days. If you need it delivered or collected from your local branch, extra time is required.

Simply speak to your local Champion branch for details.

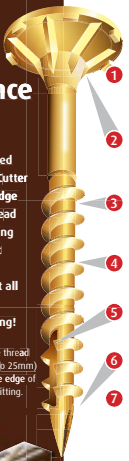


All illustrations are intended as a guide only. Specifications subject to change. We have access to technical information if assistance required.

We have a huge range and large stocks of all the fixings and fittings needed, together with a vast range of ironmongery items to complete a project.

CUTTER REISSER®


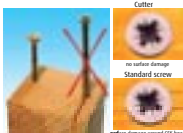
The next generation in performance woodscrews



- DISTINCT RIBS AND TUCKS**
Self countersinking into all timber and board materials. No need to counterbore.
- RE-INFORCED COLLAR**
Prevents snapping AND gives depth for a wide, deep pozi to be inserted, therefore reducing the risk of "cam-out"
- LUBRICATED, SHARP WIDE, DEEP THREAD**
Up to 40% reduction in driving resistance therefore less torque required. Quick and easy penetration WITHOUT a pilot hole
- YELLOW TROPICALIZED**
Superior rust resistance than a standard B2P screw
- TWO PATENTED SLOTS**
Prevents splitting when screwing close to the edge
- 25° NEEDLE POINT**
Immediate start
- EYE-CATCHING, INFORMATIVE PACKAGING**

Due to the **TWO** unique patented slots (25mm and above), the Cutter allows screwing close to the edge without splitting. Under the head are **BOTH** ribs and tucks enabling the screw to sit flush and tight without surface damage. With the ability to penetrate almost all timbers **without a pilot hole**, this really is a screw worth using!

-Unique design with 2 slots cut into the thread on 30mm screws and above (1 cut up to 25mm) to allow the screw to work closer to the edge of timber and board materials without splitting.

TIMco CLASSIC C2

TWIN CUT MULTI-PURPOSE SCREW



The TIMco Classic C2 has been engineered around the backbone of the TIMco Classic, one of Europe's largest selling Multi-Purpose screws. Using the most modern manufacturing methods and design techniques, the C2 is a revolutionary high performance Multi-Purpose screw.

- DEEP RECESS TO PREVENT "CAM-OUT"**
- RIBS UNDER HEAD FOR IMPROVED COUNTER-SINKING**
- CLASSIC THREAD FOR A SECURE FIXING**
- TWIN CUT FOR RAPID "PICK-UP" & REDUCED SPLITTING**

NEW GENERATION MULTI-MATERIAL FASTENER

RAPID INSTALLATION INTO

Hardwood	Softwood	Chipboard	Thin Sheet Metal	Plastic	MDF

Positive Drive Recess
The TIMco C2 recess is manufactured using state of the art machinery, dies, and quality control procedures, giving precise and positive drive control on every screw.

Engineered Countersink
The TIMco C2 Countersinking Ribs have been designed and positioned to sit under the countersinks of the ironmongery and hinges to give a smooth and flush finish and prevents plating and material damage.

Unique Synthetic Lubrication
The TIMco C2 has been coated with a high-molecular polymer lubricant that dramatically reduces insertion torque by up to 52% and increases rust protection up to 20 times longer than a standard zinc plating.

Twin-Cut Technology
The TIMco C2 is first in its category to offer parallel twin cut manufacturing technology; this patented method of manufacturing applies the cuts in exactly the same position and angle every time. Using this technology our designers and engineers have developed a new generation in fasteners that gives a consistent and exceptional level of performance in multiple materials.

CUT TECHNOLOGY UP TO 43% QUICKER

PATENTED TWIN 52% LESS TORQUE

* Compared against standard wood screws





Pick up a brochure at any branch or download a brochure at:
www.championtimber.com



Champion Timber Branches:

GUILDFORD



Moorfield Road, Slyfield Industrial Estate, Guildford, GU1 1RU
Tel: 01483 510170
Fax: 01483 510171
 Email: guildford@championtimber.com
 Open Mon to Fri 7.30am – 5pm Sat 8am – 5pm

NEW MALDEN also HEAD OFFICE



205 - 209 Burlington Road, New Malden, Surrey, KT3 4NB
Tel: 020 8949 1621
Fax: 020 8942 9752
 Email: newmalden@championtimber.com
 Open Mon to Fri 7am – 5.30pm Sat 8am – 5pm

WIMBLEDON



2 Hartfield Crescent, entrance off Beulah Road, Wimbledon, SW19 3SD
Tel: 020 8542 1606
Fax: 020 8540 7237
 Email: wimbledon@championtimber.com
 Open Mon to Fri 7.30am – 5pm Sat 8am – 5pm

CLAYGATE



High Street, Claygate, Surrey, KT10 0JW
Tel: 01372 462407
Fax: 01372 468414
 Email: claygate@championtimber.com
 Open Mon to Fri 7.30am – 5pm Sat 8am – 5pm

DORKING



Curtis Road, Dorking, Surrey, RH4 1EJ
Tel: 01306 884418
Fax: 01306 889798
 Email: dorking@championtimber.com
 Open Mon to Fri 7.30am – 5pm Sat 8am – 5pm

EDENBRIDGE



Fircroft Way Industrial Estate, Edenbridge, Kent, TN8 6EL
Tel: 01732 864328
Fax: 01732 863690
 Email: edenbridge@championtimber.com
 Open Mon to Fri 7.30am – 5pm Sat 8am – 5pm

CHESSINGTON



385 Leatherhead Road, Chessington, Surrey, KT9 2NQ
Tel: 01372 847910
Fax: 01372 847911
 Email: chessington@championtimber.com
 Open Mon to Fri 7.30am – 5pm Sat 8am – 5pm

SUTTON



272 - 274 High Street, Sutton, Surrey, SM1 1PG
Tel: 020 8642 8291
Fax: 020 8770 9171
 Email: sutton@championtimber.com
 Open Mon to Fri 7am – 5.30pm Sat 8am – 5pm

BROMLEY



109-123 Southlands Road, Bromley, Kent, BR2 9QX
Tel: 020 8460 6655
Fax: 020 8313 0583
 Email: bromley@championtimber.com
 Open Mon to Fri 7.30am – 5pm Sat 8am – 5pm

Delivering over a wide area



February 2016