



Example CalBenches

An overview of some configured CalBench solutions for industrial calibration

- Wide Workload CalBench
- Process and Pressure CalBench
- Electrical CalBench
- Repair and Maintenance CalBench





CBP-WW1: Wide Workload CalBench

A pre-configured CalBench for electrical, temperature and pressure calibration

Wide Workload CalBench: Items in Package

The modules and items in the CBP-WW1 Wide Workload CalBench package



About the Wide Workload CalBench

The CBP-WW1 is a CalBench package designed to provide users with a turnkey solution to calibrate instruments and devices used across industries. It offers a selection of features and functions to enable automated calibration using EasyCal software on the 7051Plus multifunction calibrator and control centre module.

- Multi instrument and device testing
- Multifunction calibrator module with 6.5 digit DMM and PC control centre
- Source and measure voltage, current, resistance, frequency and more
- RTD and thermocouple simulation and measurement
- Automatic pressure controller module for calibration from vacuum to 20bar
- Regulated pressure calibration module for vacuum to 200bar
- Precision pressure measurement modules for 2bar, 100bar and 700bar
- Benchtop pumps, pressure adaptor kit and electrical vacuum pump included
- Fixed and variable DC power supply modules for powering devices under test
- Control centre operated 200MHz oscilloscope
- Temperature interface module for batch thermocouple calibration
- Dry block calibrators for temperature sourcing, automatic control via EasyCal
- Automated calibration using EasyCal software with printers and extras supplied

Calibration Capabilities

Pressure

Gauges, calibrators, transducers, transmitters, indicators, switches, valves, controllers, manometers, chart recorders.

Temperature

Temperature sensors, indicators, thermocouple and RTD transmitters, recorders, controllers, thermometers, process calibrators, PRTs, thermistors.

Electrical / Frequency

Multimeters, AC/DC signal sources, clamp meters, data loggers, tachometers, ohmmeters, decade boxes, RCL meters, conductance meters, inductance meters, oscilloscopes, frequency meters, frequency counters, timer counters.



Item #	QTY	Code	Basic Description	Basic Purpose
1	1	7080-HD	CalBench Heavy Duty Version (W2000 x D850 x H1568) Framework bench style with worktop, perforated panel, primary console with 7082 mains power controller module.	Provides an ergonomic workspace for various calibration applications. Modules below to be fitted to the primary console for testing workload.
2	1	7137	Perfo Panel Option: 40 piece Tool Hook Kit	For holding various tools and accessories.
3	1	7139	Perfo Panel Option: Shelf (W450 x D250 x H130mm)	Suitable for storing equipment and tools.
4	1	7133	Magnet Set for Perfo Panel (10 x round, 10 x hook type)	For securing documents and small tools to perfo panel.
5	1	7132	5 Drawer Unit (W500 x D550 x H600mm)	For storage of equipment, tools, documents etc.
6	3	7134	Slotted Divider Kit for drawers inside 7132	Partitions the drawer units for parts and components.
7	1	7123	CPU/Dry Block Calibrator Holder	For storing dry block calibrators when not in use.
8	1	7051+	Multifunction Calibrator and Control Centre Module Advanced system package for precision source and measure capabilities. Integral calibrator, 6.5 digit multimeter, PC and EasyCal software. Operation via 12.1" touch screen display. Built-in communication with compatible modules.	Source and measure electrical, electronic, frequency, temperature. Enables users to calibrate process and electrical instruments like sensors, multimeters, clamp meters, scopes and more. EasyCal software and accessories included for automation, administration and certificate generation.
9	1	CCPAD	Control Centre Numeric Keypad Module with jog dial	Ergonomic method of data entry to EasyCal software.
10	1	7030B/7104	Automatic Pressure Calibrator Module Vacuum to 20bar, 0.025% FS accuracy	For automated pressure calibration. 20bar range for workload pneumatic testing of gauges, transmitters etc.
11	1	7030INTSC	IntelliScale option for 7030B - Spec enhancement to 0.025% of half range and 0.025% of RDG in upper half of range.	Enhances the accuracy and precision of 7030B enabling a wider workload coverage.
12	1	7030BARO	Barometric Reference Option for 7030 / 7030B	Enables the 7030B to emulate absolute pressure.
13	1	RMTEG-G200b/0.02	TE Digital Pressure Gauge Module with Regulator 0 to 200bar, 0.02% FS accuracy	For high range pneumatic calibration work, with a line supply typically from a gas cylinder to enable regulator adjustment.
14	1	XTEG-G700b/0.02/M	Gauge Pressure Measurement Module 0 to 700bar, 0.02% FS accuracy	For hydraulic calibration with accompanying pump.
15	1	XTEG-G100b/0.02/M	Gauge Pressure Measurement Module 0 to 100bar, 0.02% FS accuracy	For mid/high range pneumatic calibration work. Used with 7194A pump or T-piece method from RMTEG-G200b/0.02.
16	1	XTEG-CV2b/0.02/M	Compound Pressure Measurement Module -1 to 2bar, 0.02% FS accuracy	For low range pressure calibration. Used with 7194A pump or T-piece method from 7030B module.
17	1	7085A	Auto Switching Temperature Distribution Module	Connection module to enable batch testing of temperature devices like thermocouples.
18	1	7053	56V DC 4A Adjustable Power Supply Module - Digital	A variable DC supply to supplement various applications.
19	1	7087	Quad DC Power Supply Module 6V (20A), 12V (10A), 24V (6A), 48V (3A)	Provides a DC power supply to various loop instrumentation under test.
20	1	CCSCOPE-2208A	Integral Oscilloscope with Connection Module 200MHz, 2 channel, operation via control centre	For basic R&M applications, fault finding and diagnostic work.
21	1	7149	Electrical Vacuum Pump	Provides a vacuum for pressure modules.
22	1	7149-HCO	Housing and Connectivity Option for the 7149 vacuum pump	Compact housing for the 7149 pump, situated under bench.
23	1	7195	Benchtop Hydraulic Pressure Calibration Pump Vacuum to 700bar	Provides hydraulic pressure to 700bar XTEG module.
24	1	7194A	Benchtop Pneumatic High Pressure Calibration Pump Vacuum to 200bar	Pressure generation to 200bar, suitable for use with pressure modules when compressed air source is not available.
25	1	7198	Pressure Calibration Accessories Kit A comprehensive selection of fittings, adaptors and hoses	Provides all the required pressure connections and fittings for modules and pumps to UUT's.
26	1	TXG-STD	Benchtop Transmitter and Gauge Stand	For positioning UUT's on CalBench worktop.
27	1	7072	Dry Block Calibrator (33 to 650°C) with metric multi hole insert (3,4,5,6,9mm), blank insert, EasyCal software driver	Temperature source for the calibration of probes, RTDs, and more. Automated operation with 7051, EasyCal and 7085A.
28	1	7072-METP	Pack of 16 Metric Inserts for 7072 - 3mm to 20mm holes	Inserts for use with different probe sizes, used with 7072.
29	1	7073	Dry Block Calibrator (300 to 1205°C) with metric multi hole insert (3,4,6mm), blank insert, EasyCal software driver	Temperature source for the calibration of thermocouples. Automated operation with 7051, EasyCal and 7085A.
30	1	7073-METP	Pack of 10 Metric Inserts for 7073 - 3,4,5,6,7,8,9,10,11,12mm	Inserts for use with different probe sizes, used with 7073.
31	1	CERTS	Traceable Calibration Certificates - for all test modules and additional test equipment	Certifies all calibration modules and additional test instruments have been tested in the TE factory to international standards.



CBP-PROC1: Process CalBench

A pre-configured CalBench for the calibration of process and pressure instrumentation

Process CalBench: Items in Package

The modules and items in the CBP-PROC1 Process CalBench package



About the Process CalBench

The CBP-PROC1 CalBench is a package that provides users with the capabilities to perform rapid calibration of process and pressure instrumentation. It is an ideal solution for instrument workshops that require a high performance workstation as the platform for calibration of plant devices and instruments.

- Dedicated process instrumentation calibration bench
- Process calibrator module with 6.5 digit DMM and PC control centre
- Source and measure voltage, current, resistance, frequency and more
- RTD and thermocouple simulation and measurement
- HART communication
- Automatic pressure controller module for calibration from vacuum to 20bar
- Regulated pressure calibration module for vacuum to 200bar
- Precision pressure measurement modules for pneumatic, hydraulic, & differential
- Benchtop pumps, pressure adaptor kit and electrical vacuum pump included
- Fixed and variable DC power supply modules for powering devices under test
- Temperature interface module for batch thermocouple calibration
- Dry block calibrators for temperature sourcing, automatic control via EasyCal
- Automated calibration using EasyCal software with printers and extras supplied

Calibration Capabilities

Pressure

Gauges, calibrators, transducers, transmitters, indicators, switches, valves, controllers, manometers, chart recorders.

Temperature

Temperature sensors, indicators, thermocouple and RTD transmitters, recorders, controllers, thermometers, process calibrators, PRTs, thermistors.

Electrical and Process

Calibrators, mV/mA meters, decade boxes, flow totalizers, DP flow transmitters, pulse meters, tachometers, counters.



Item #	QTY	Code	Basic Description	Basic Purpose
1	1	7080-HD	CalBench Heavy Duty Version (W2000 x D850 x H1568) Framework bench style with worktop, perforated panel, primary console with 7082 mains power controller module.	Provides an ergonomic workspace for various calibration applications. Modules below to be fitted to the primary console for testing workload.
2	1	7137	Perfo Panel Option: 40 piece Tool Hook Kit	For holding various tools and accessories.
3	1	7139	Perfo Panel Option: Shelf (W450 x D250 x H130mm)	Suitable for storing equipment and tools.
4	1	7133	Magnet Set for Perfo Panel (10 x round, 10 x hook type)	For securing documents and small tools to perfo panel.
5	1	7132	5 Drawer Unit (W500 x D550 x H600mm)	For storage of equipment, tools, documents etc.
6	3	7134	Slotted Divider Kit for drawers inside 7132	Partitions the drawer units for parts and components.
7	1	7123	CPU/Dry Block Calibrator Holder	For storing dry block calibrators when not in use.
8	1	8060+	Process Calibrator and Control Centre Module Advanced system package for precision source and measure capabilities. Integral process calibrator, 6.5 digit multimeter, PC and EasyCal software. Operation via 12.1" touch screen display. Built-in communication with compatible modules.	Source and measure process signals for electrical, frequency, temperature. Enables users to calibrate process instrumentation like transmitters, RTDs, thermocouples and more. EasyCal software and accessories included for automation, administration and certificate generation.
9	1	CCPAD	Control Centre Numeric Keypad Module with jog dial	Ergonomic method of data entry to EasyCal software.
10	1	7030B/7104	Automatic Pressure Calibrator Module Vacuum to 20bar, 0.025% FS accuracy	For automated pressure calibration. 20bar range for workload pneumatic testing of gauges, transmitters etc.
11	1	7030INTSC	IntelliScale option for 7030B - Spec enhancement to 0.025% of half range and 0.025% of RDG in upper half of range.	Enhances the accuracy and precision of 7030B enabling a wider workload coverage.
12	1	7030BARO	Barometric Reference Option for 7030 / 7030B	Enables the 7030B to emulate absolute pressure.
13	1	RMTEG-G200b/0.02	TE Digital Pressure Gauge Module with Regulator 0 to 200bar, 0.02% FS accuracy	For high range pneumatic calibration work, with a line supply typically from a gas cylinder to enable regulator adjustment.
14	1	XTEG-G700b/0.02/M	Gauge Pressure Measurement Module 0 to 700bar, 0.02% FS accuracy	For hydraulic calibration with accompanying pump.
15	1	XTEG-G100b/0.02/M	Gauge Pressure Measurement Module 0 to 100bar, 0.02% FS accuracy	For mid/high range pneumatic calibration work. Used with 7194A pump or T-piece method from RMTEG-G200b/0.02.
16	1	XTEG-CV2b/0.02/M	Compound Pressure Measurement Module -1 to 2bar, 0.02% FS accuracy	For low range pressure calibration. Used with 7191 pump or T-piece method from 7030B module.
17	1	XTEG-DP700mb/0.02/M	Differential Pressure Measurement Module 0 to +/-700mbar, 0.02% accuracy	For differential pressure calibration of transmitters etc. Used with 7191 pneumatic pump for fine control input.
18	1	XTEG-DP200mb/0.05/M	Differential Pressure Measurement Module 0 to +/-200mbar, 0.05% accuracy	For low range differential pressure calibration of transmitters etc. Used with 7191 pneumatic pump for fine control input.
19	1	7085A	Auto Switching Temperature Distribution Module	Connection module to enable batch testing of temperature devices like thermocouples.
20	1	7052	30V DC 3A Adjustable Power Supply Module - Digital	A variable DC supply to supplement various applications.
21	1	7087	Quad DC Power Supply Module 6V (20A), 12V (10A), 24V (6A), 48V (3A)	Provides a DC power supply to various loop instrumentation under test.
22	1	7149	Electrical Vacuum Pump	Provides a vacuum for pressure modules.
23	1	7149-HCO	Housing and Connectivity Option for the 7149 vacuum pump	Compact housing for the 7149 pump, situated under bench.
24	1	7195	Benchtop Hydraulic Pressure Calibration Pump Vacuum to 700bar	Provides hydraulic pressure to 700bar XTEG module.
25	1	7194A	Benchtop Pneumatic High Pressure Calibration Pump Vacuum to 200bar	Pressure generation to 200bar, suitable for use with pressure modules when compressed air source is not available.
26	1	7191	Pneumatic Benchtop Pump Vacuum to 4bar	Enables precise, fine control input of low pressure for pneumatic work. Suitable for use with XTEG measurement modules.
27	1	7198	Pressure Calibration Accessories Kit A comprehensive selection of fittings, adaptors and hoses	Provides all the required pressure connections and fittings for modules and pumps to UUT's.
28	1	TXG-STD	Benchtop Transmitter and Gauge Stand	For positioning UUT's on CalBench worktop.
29	1	7072	Dry Block Calibrator (33 to 650°C) with metric multi hole insert (3,4,5,6,9mm), blank insert, EasyCal software driver	Temperature source for the calibration of probes, RTDs, and more. Automated operation with 7051, EasyCal and 7085A.
30	1	7072-METP	Pack of 16 Metric Inserts for 7072 - 3mm to 20mm holes	Inserts for use with different probe sizes, used with 7072.
31	1	7073	Dry Block Calibrator (300 to 1205°C) with metric multi hole insert (3,4,6mm), blank insert, EasyCal software driver	Temperature source for the calibration of thermocouples. Automated operation with 7051, EasyCal and 7085A.
32	1	7073-METP	Pack of 10 Metric Inserts for 7073 - 3,4,5,6,7,8,9,10,11,12mm	Inserts for use with different probe sizes, used with 7073.
33	1	CERTS	Traceable Calibration Certificates - for all test modules and additional test equipment	Certifies all calibration modules and additional test instruments have been tested in the TE factory to international standards.



CBP-ELEC1: Electrical CalBench

A pre-configured CalBench for electrical, electronic, frequency and temperature calibration

Electrical CalBench: Items in Package

The modules and items in the CBP-ELEC1 Electrical CalBench package



About the Electrical CalBench

A CalBench package that provides users with modules and extras for the calibration of electrical and electronic test tools, instruments and devices. It allows users to test and maintain a wide range of instruments commonly used by engineers in industrial plants, with a high level of automation to ensure rapid turnarounds.

- Comprehensive calibration of electrical and electronic test tools
- Multifunction calibrator module with 6.5 digit DMM and PC control centre
- Source and measure voltage, current, resistance, frequency and more
- Oscilloscope calibration with 2.2GHz levelled sine wave generation
- RTD and thermocouple simulation and measurement
- Electrical tester calibrator module for RCD, loop, and insulation
- Benchtop insulation tester calibrator for increased range coverage
- 50MHz function generator module for test and repair work
- Variable AC and DC power supply modules for functional testing of equipment
- Control centre operated 200MHz oscilloscope and 6GHz frequency counter
- Automated calibration using EasyCal software with printers and extras supplied
- Extras include solder and re-work station, service kit and ESD workstation kit



Calibration Capabilities

Electrical and Electronic

Multimeters, AC/DC signal sources, clamp meters, data loggers, tachometers, ohmmeters, decade boxes, RCL meters, watt meters, conductance meters, inductance meters, continuity testers.

Electrical Test and Frequency

RCD testers, loop testers, earth ground testers, insulation testers, multifunction installation testers, micro ohm meters, portable appliance testers, oscilloscopes, frequency meters, frequency counters, timer counters.

Temperature

Sensors, transmitters, indicators, RTDs, thermocouples, recorders, controllers, thermometers, process calibrators, PRTs, thermistors.

Note: A dry block calibrator is required for temperature sourcing on certain applications

Item #	QTY	Code	Basic Description	Basic Purpose
1	1	7080	CalBench Cantilever Version (W2000 x D850 x H1568) Cantilever bench style with worktop, perforated panel, primary console with 7082 mains power controller module.	Provides an ergonomic workspace for various calibration applications. Modules below to be fitted to the primary console for testing workload.
2	1	7137	Perfo Panel Option: 40 piece Tool Hook Kit	For holding various tools and accessories.
3	1	7139	Perfo Panel Option: Shelf (W450 x D250 x H130mm)	Suitable for storing equipment and tools.
4	1	7133	Magnet Set for Perfo Panel (10 x round, 10 x hook type)	For securing documents and small tools to perfo panel.
5	1	7141	Perfo Panel Option: Storage Bin Strip (W450 x H75mm). Supplied with 4 x 1L bins	For storage of components and small tools.
6	1	7122	3 Drawer Unit (W500 x D550 x H450mm)	For storage of equipment, tools, documents etc.
7	3	7134	Slotted Divider Kit for drawers inside 7122	Partitions the drawer units for parts and components.
8	1	7051+	Multifunction Calibrator and Control Centre Module Advanced system package for precision source and measure capabilities. Integral calibrator, 6.5 digit multimeter, PC and EasyCal software. Operation via 12.1" touch screen display. Built-in communication with compatible modules.	Source and measure electrical, electronic, frequency, temperature. Enables users to calibrate process and electrical instruments like sensors, multimeters, clamp meters, scopes and more. EasyCal software and accessories included for automation, administration and certificate generation.
9	1	9769	7051 Internal Option: 2.2GHz Levelled Sine Generator	An internally fitted option that enables the calibrator to output a pure sine wave up to 2.2GHz, for calibration of oscilloscopes.
10	1	CCPAD	Control Centre Numeric Keypad Module with jog dial	Ergonomic method of data entry to EasyCal software.
11	1	5030B	Electrical Tester Calibrator Module	Calibrate RCD, loop, insulation, earth testers and multifunction installation testers.
12	1	CCSCOPE-2208A	Integral Oscilloscope with Connection Module 200MHz, 2 channel, operation via control centre	For basic R&M applications, fault finding and diagnostic work.
13	1	CC-FRQC	Integral Frequency Counter with Connection Module 6000MHz, operation via control centre	For frequency measurement applications in fault diagnostics and repair work.
14	1	7031	50MHz Function/Arbitrary/Pulse Generator	Used to generate different types of electrical waveforms over the frequency range, for test and repair applications.
15	1	7088D	Adjustable AC Supply Module with Digital Displays Variable output voltage from 0 to 110% above line input. 0 to 265V 50Hz, 10A at 240V. 0 to 121V 50Hz, 10A at 110V.	Provides variable 50Hz AC power up to 10A with two digital meters monitoring the output voltage and current. For general purpose use and R&M applications.
16	1	7053	56V DC 4A Adjustable Power Supply Module - Digital	A variable DC supply to supplement various applications.
17	1	5069	Benchtop Insulation Tester Calibrator Decade resistance 100k Ohm - 100G Ohm	For calibrating insulation testers and megohmmeters with test voltages up to 9kV.
18	1	7145	High Performance Soldering/De-soldering/Rework Station Includes soldering iron, de-soldering tool & hot air rework tool, standard tips and nozzles	High quality soldering, for electronics, components etc. A comprehensive unit that features a built-in pump for vacuum and air flow, and three simultaneously powered ports.
19	1	7146	Extra solder tips (6 piece set)	A selection of soldering tips for use with the 7145 unit.
20	1	TL90	High Performance Magnification and Inspection Light	A magnifier with 48 premium LEDs to illuminate a 6" wide-angle, distortion-free lens. For inspection of circuit boards etc.
21	1	7183	Electronic service case (82 tools)	A comprehensive selection of tools for electrical and electronic service work.
22	1	7186	ESD Workstation Kit for CalBench Benchtop mat, signage, bonding plugs, wrist strap & leads	An antistatic mat to cover the benchtop when needed. A kit to eliminate static electricity and prevent ESD damage.
23	1	CERTS	Traceable Calibration Certificates - for all test modules and additional test equipment	Certifies all calibration modules and additional test instruments have been tested in the TE factory to international standards.



CBP-RM1: Repair and Maintenance CalBench

A pre-configured CalBench for R&M applications

Repair and Maintenance CalBench: Items in Package

The modules and items in the CBP-RM1 Repair and Maintenance CalBench package



About the R&M CalBench

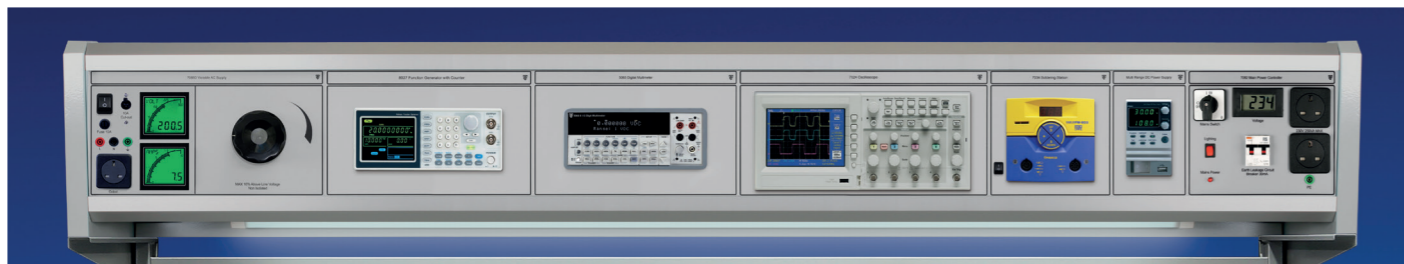
The CBP-RM1 is a package featuring a multi-purpose CalBench with various extras for common repair and maintenance applications. It is an excellent system for electrical workshops that need a solution to fast and efficient instrument and device diagnostics.

This package creates a highly organised workspace with familiar test and measurement instruments integrated into the console of the CalBench. Modules include variable AC and DC power supplies, an oscilloscope, function generator and digital multimeter. This module selection provides engineers with a range of features and functions to perform service work where signal generation and analysis is required.

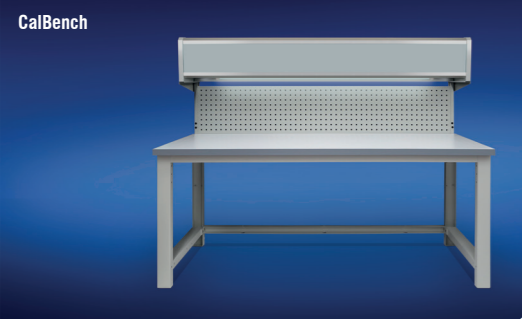
Additionally a soldering station module allows users to perform basic repairs of devices and work on electrical components. Accessories that complement the module include a fume extractor, magnifying lamp and circuit board holder.

Features

- CalBench for R&M, diagnostics, fault finding and analysis
- Suitable for electrical workshops in process and power plants
- Modules to help users investigate behaviours of instruments
- Oscilloscope and digital multimeter modules
- Variable AC and DC power supply modules
- Function generator with frequency counter module
- Solder station module with accompanying benchtop extras
- PC housed under worktop with monitor mounted to perfo panel
- Antistatic mat included (ESD type worktop optional)
- Comprehensive kit of electronics service tools included



Item #	QTY	Code	Basic Description	Basic Purpose
1	1	7080	CalBench Cantilever Version (W2000 x D850 x H1568) Cantilever bench style with worktop, perforated panel, primary console with 7082 mains power controller module.	Provides an ergonomic workspace for various calibration applications. Modules below to be fitted to the primary console for testing workload.
2	1	7137	Perfo Panel Option: 40 piece Tool Hook Kit	For holding various tools and accessories.
3	1	7139	Perfo Panel Option: Shelf (W450 x D250 x H130mm)	Suitable for storing equipment and tools.
4	1	7133	Magnet Set for Perfo Panel (10 x round, 10 x hook type)	For securing documents and small tools to perfo panel.
5	1	7141	Perfo Panel Option: Storage Bin Strip (W450 x H75mm). Supplied with 4 x 1L bins	For storage of components and small tools.
6	1	7131	Combination 1 Drawer + Cabinet Unit (W500 x D550 x H600mm)	For storage of equipment, tools, documents etc.
7	1	7123	Under Bench CPU Holder	For housing computer (CBPC) under worktop.
8	1	5065B	6.5 Digital Multimeter Module AC/DC voltage, AC/DC current, 2/4 wire resistance, frequency, period, diode, continuity, thermocouples and RTD	A versatile 6½ digit multimeter module with 19 measurement functions. Simple operation, stability, and high accuracy make the 5065B an ideal DMM for a variety of applications.
9	1	7024	Digital Oscilloscope Module 200MHz, 4 channel, colour LCD display	High performance scope ideal for maintenance of electronic equipment and general purpose laboratory work.
10	1	8027	25MHz Arbitrary DDS Function Generator Module With counter, sweep, AM, FM and FSK modulation	Used to generate different types of electrical waveforms over the frequency range, and frequency measurement for fault diagnostics and repair work.
11	1	7088D	Adjustable AC Supply Module with Digital Displays Variable output voltage from 0 to 110% above line input. 0 to 265V 50Hz, 10A at 240V. 0 to 121V 50Hz, 10A at 110V.	Provides variable 50Hz AC power up to 10A with two digital meters monitoring the output voltage and current. For general purpose use and R&M applications.
12	1	M-PSW160-7.2	Multi-Range DC Power Supply Module 0 ~ 160V, 0 ~ 7.2A, 360W	A regulated DC supply for inputting stable voltages, for bench testing of devices and circuits.
13	1	7034	Digital Soldering Station Module Includes soldering iron, standard tip and holder	High quality soldering, for electronics, components etc.
14	1	7146	Extra Solder Tips (6 piece set)	A selection of soldering tips for use with the 7034 module.
15	1	7147	Benchtop Fume Extraction Kit	Fume extractor for use with 7034 soldering module
16	1	TL90	High Performance Magnification and Inspection Light	A magnifier with 48 premium LEDs to illuminate a 6" wide-angle, distortion-free lens. For inspection of circuit boards etc.
17	1	7180	Circuit Board Holder	For holding circuit boards with quick and easy rotation and component insertion/soldering.
18	1	7183	Electronic Service Case (82 tools)	A comprehensive selection of tools for electrical and electronic service work.
19	1	7186	ESD Workstation Kit for CalBench Benchtop mat, signage, bonding plugs, wrist strap & leads	An antistatic mat to cover the benchtop when needed. A kit to eliminate static electricity and prevent ESD damage.
20	1	CBPC	CalBench PC Workstation Includes high performance PC, TL70 17" touch screen monitor, TL102 mounting arm, keyboard and mouse	Enable users to access necessary programs and data. An ergonomic mounting arm fixes the monitor to the CalBench perfo panel enabling it to be positioned away from the tabletop when not in use. The PC is housed in the 7123 under worktop holder.
21	1	CERTS	Traceable Calibration Certificates - for all test modules and additional test equipment	Certifies all measurement modules and additional instruments have been tested in the TE factory to international standards.

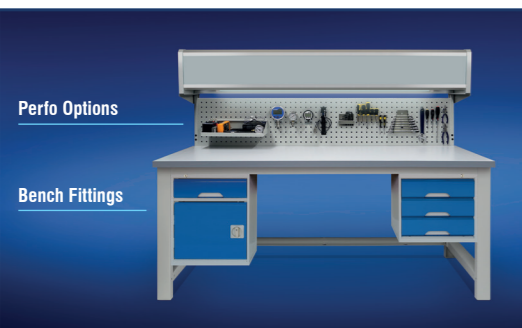


CalBench

Step 1: Contact the CalBench Sales Team

Get in contact with us to discuss your requirements. We have a team of experts who will be able to run through the available options and explain the features and functions available.

- a) Email sales@calbench.com, call Time Electronics, or an authorised distributor.
- b) Let us know your location and industry, and relevant background information.
- c) Tell us about your existing set up and what you want to achieve with your CalBench.
- d) Look at the example CalBenches for a quick guide to common configurations.
- e) If applicable to your requirement we can base the configuration on an example CalBench and modify if needed.
- f) Provide the information based on steps 2 to 4.



Perfo Options

Bench Fittings

Step 2: The CalBench Type, Fittings and Extras

Review the various options in Section 1 of this catalogue. The CalBench sales team can advise on suitable solutions based on your industry and type of work you will be using the CalBench to perform.

- a) Choose the 7080 cantilever CalBench or 7080-HD heavy duty framework CalBench.
- b) If it is a multiple CalBench requirement then decide if the 7080-CNR corner bench is an option to bridge the two main CalBenches and form an L-shaped workstation.
- c) Select the under worktop fittings that are appropriate based on storage needs.
- d) Choose the perforated panel options best suited, for your quick access storage.
- e) If a complete workshop or lab design requirement, then send us the dimensions.



Modules

Step 3: Module Requirements

Selecting the correct modules for your applications is the most critical part of the process. See Section 2 for available modules, or we will advise you based on various criteria below.

- a) What are the general requirements for the CalBench, i.e. calibration, training, R&M etc.
- b) Do you want to automate calibration and testing applications.
- c) What are the parameters you want to cover, i.e. electrical, temperature, pressure etc.
- d) What instruments and devices do you want to calibrate.
- e) Range coverage: For parameters like pressure and temperature what are the min & max ranges, plus the most common range. For pressure what types are required.
- f) If available, the models or information on the UUT's you plan to calibrate.

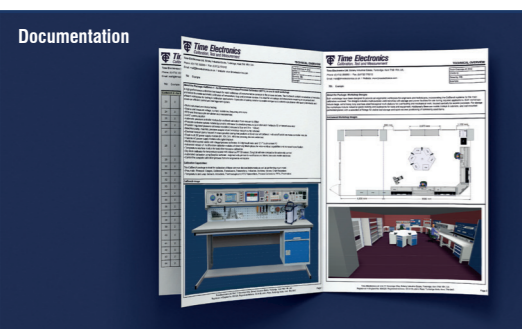


Accompanying Products

Step 4: Accompanying Instruments Requirements

Accompanying products are required to supplement applications on the CalBench. Typically these would be for pressure and temperature, or items used for service work in the laboratory/workshop, and for field applications.

- a) Line pressure: What is required and what is readily available on-site.
- b) Manual pressure generation: Pumps and extras for inputting pressure to modules.
- c) Dry block calibrators: A typical requirement, selecting the models needed based on temperature range coverage, i.e. for RTDs and thermocouples.
- d) R&M products such as soldering stations and extras that may be needed.
- e) Determine what other products are needed for lab and/or field applications.



Documentation

Step 5: Receive Detailed Information About Your CalBench

Once the configuration of the CalBench and additional items have been confirmed, the CalBench team or distributor will provide detailed documentation.

- a) Technical proposal with an overview of all items in the package.
- b) Full project file with individual data sheets, specifications and relevant literature
- c) Concept images of the CalBench or CalBenches
- d) If a lab design an overview and concept images of the work space
- e) Pricing, delivery and ordering information
- f) Information on services like installation and training. Both on-site and UK based training programs are available.

On-Site Services

Installation, Commissioning, Training

A travelling engineer will visit the customer's facility to install and commission the CalBench, supporting instruments, and laboratory furniture. Our team can perform site visits worldwide and are qualified to work on offshore platforms, power and processing plants, and refineries.

Training is most often included with the CalBench or lab installation, or can be scheduled for a later date. A qualified CalBench engineer will educate users on how to set up their system, to operate modules and additional test instruments. They will also simulate the calibration process by demonstrating tests on actual devices at the site, as well as consulting on best practice calibration.

Calibration and Maintenance

A technician can visit the test facility annually to perform calibration of the CalBench and additional test equipment. This can be scheduled before or after installation and can include additional training if required.



Factory Acceptance Testing & Training in UK

Factory Acceptance Testing

Factory acceptance testing can be undertaken by the end user or their designated inspection company. A full program is provided to cover the visual and functional checks of the CalBench and other equipment for supply.

UK Based Training

Customers can visit Time Electronics UK and receive training on their ordered system prior to shipment. We will schedule and arrange all aspects of the visit, including local transport and accommodation. The factory is based in Tonbridge, situated in the south east of England, approximately thirty miles from London.



Remote Training and Support

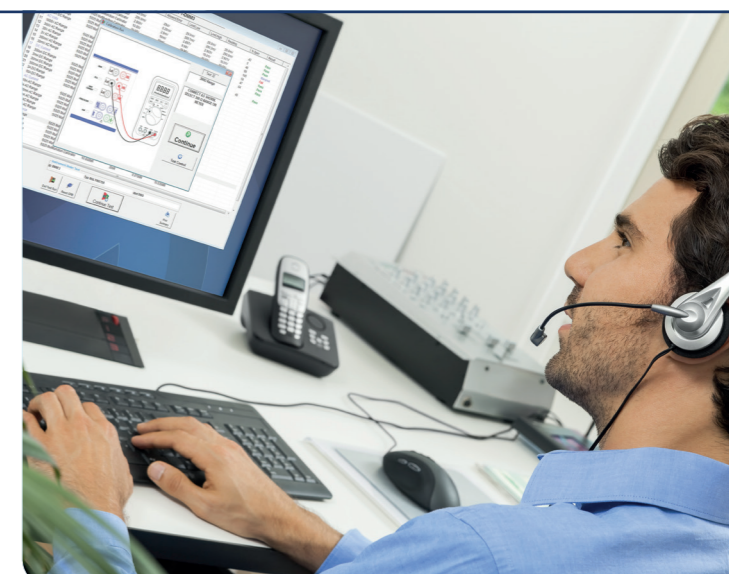
Online EasyCal Training

Using remote desktop sharing we can help customers understand and utilise EasyCal software for calibration work and management. We can provide basic tutorials or troubleshoot specific applications relative to end user requirements.

EasySupport for CalBench

CalBenches that features a control centre modules come supplied with the Time Electronics EasySupport program. This application enables users to communicate directly with the factory, allowing the CalBench technical support team to log in and control the customer's system remotely.

This is an extremely useful tool for both support and training. The UK based team can run diagnostics and functional checks as required, and help customers resolve software issues. Customers can contact the support team by phone or via the Time Electronics website to schedule sessions.





*Time Electronics Ltd, Unit 11 Sovereign Way,
Botany Industrial Estate, Tonbridge, Kent, TN9 1RH. United Kingdom.*

T: +44 (0) 1732 355993 F: +44 (0) 1732 770312 E: mail@timeelectronics.co.uk

www.timeelectronics.com