



> **Samstock V4.9 Stock Control** - with the Sam4s SPS-2000 Touch Screen

Samstock Stock Control provides easy and quick PLU record creation which transfers and updates screens on the SPS-2000.

A user friendly communication scheduler, SamEvent, provides

automated reporting and end of period control at Point of Sale as well as uploading new PLU records and price changes or promotions.



> **Samstock - An Overview**

Samstock is a Stock Control and Management Information System suitable for retail and hospitality businesses. Choose single store or multiple branch licenses providing comprehensive reporting for both one location or consolidated branches.

Samstock tracks sales quantities and values for each product sold providing detailed, comprehensive reports on sales and profit. Historical sales reports are available by date range and comparative periods.

Samstock provides stock control with recommended re-orders, delivery tracking and stock taking with variance reporting. Samstock can also control maintenance of product files including prices and promotions.

Samstock automatically collects detailed sales information from the Point of Sale either directly to your back office PC via Ethernet, PSTN or ADSL Broadband.

Samstock communicates with various cash registers (see below), Sentinel and I.C.R. touch Screen Software.

> **Reporting - Purchasing**

- **Tree Style View Selection & Filtering** - The Stock Purchasing Menu has been graphically updated to allow selection of pending orders and deliveries sorted by supplier and date, with an option to filter the view for selected date periods.
- **Review Purchases** - Historical purchases can be viewed on screen in the new tree format. It is easy to select any supplier and date or date range to view purchases. You can delete, print, and review any purchase invoice.
- **New Product Creation** - It is possible to create a new product PLU whilst

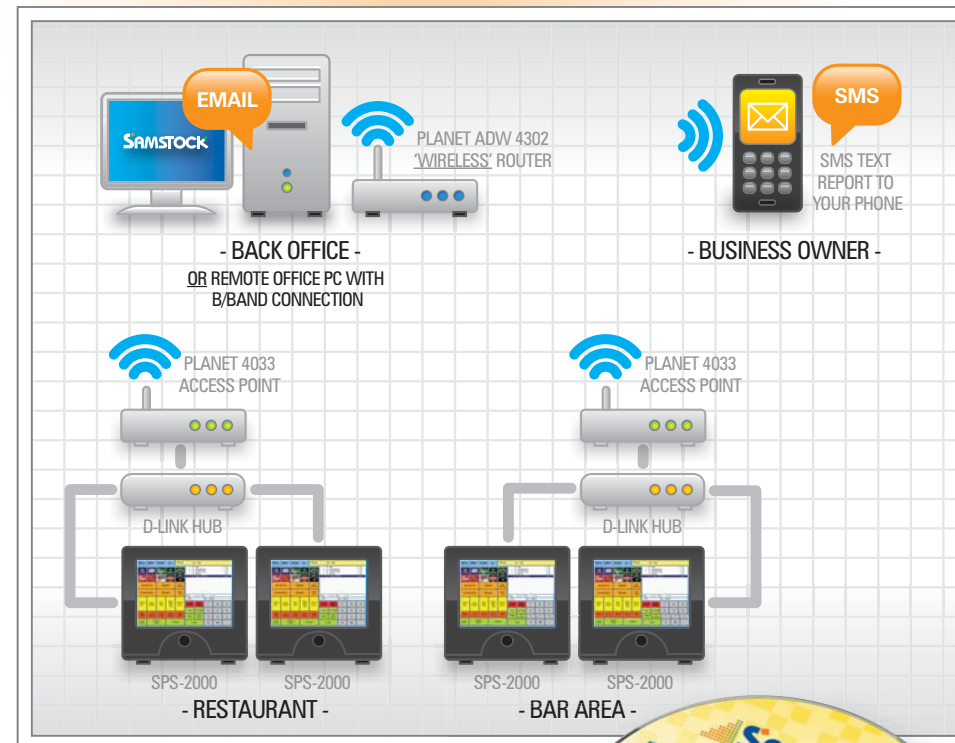
entering deliveries or purchases, providing a faster and more efficient system.

- **Spend Reports** - Supplier Cost Reports have been added in varying forms, to show the cost and quantities per supplier, with the ability to show full invoice detail, or simple product groups purchased per supplier, reports are also included to show purchase invoices by supplier by month.



Invoices Per Supplier				
From: 01-07-2008				
To: 01-07-2008				
The Brewery				
Invoice Date: 01 Jul 2008				
0030	Foster Lager	leg	998787	2.00
3	Haroban	leg	998787	2.00
4	Shawls	Case of 24	5555	10.00
5	JOB Change	Case of 24	96456	10.00
6	Case Case	Case of 24	111285	10.00
TOTAL				
REPORT TOTAL				

Detailed Purchase Invoices by Supplier Reports.



The schematic illustrates how Samstock works and integrates with the SPS-2000 using its Wireless Networking System.

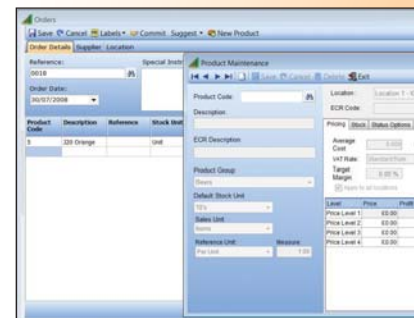
> **Reporting - Keep in Touch**

- **Reports Via Email, or SMS Text to your Mobile Phone** - Samstock will bring the sales to you wherever you are. It is possible to schedule a timed event for user groups to receive sales information via Email or Text message. The system will send, total product sales including profit and a sum of mix and match discounts, including financial totals such as cash in drawer.

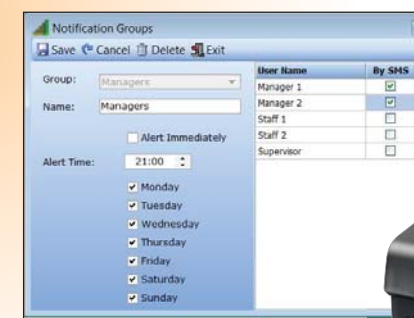


NEW RELEASE 12'
More enhanced functions & features than ever before!

- **Samevent Contacts You** - If for any reason Samevent can not complete a schedule communications event, you can elect to be notified by email/text messaging explaining which branch hasn't succeeded and the reason.



New Product Creation While in Purchasing



Screen for Setting up SMS or Email Communications.

Purchased Products Per Supplier				
From: 01-08-2008				
To: 01-08-2008				
The Brewery				
Drinks				
Soft Drinks				
4	Brtvic 55	Case of 24		3.00
Total				3.00
Draught				
Beers				
2	Foster Lager	leg	leg	11.00
3	Haroban	leg	leg	2.00
Total				13.00
Total				16.00
REPORT TOTAL				

Samstock Products by Supplier Report.

> **Information Sharing - Dealer Features**

- **Import/Export** - The Import and Export module is no longer an additional module and is included in Samstock Version 4.9. There is the additional enhancement of being able to export a file for a selected location to a spreadsheet, amend the details, and import back to Samstock.
- **ICR Accounts** - The upload and download of customer information for the ICR software is now available, including customer transaction view and print.
- **Fast Excel Report** - Within each report view, a Microsoft Excel icon has been added which allows direct output of the on-screen report to Excel spreadsheet.



> **SamPad RDA - Wireless Handheld Unit**

To further enhance Samstock the SamPad Handheld Unit integrates seamlessly with Samstock Stock Control to offer a truly 'wireless' on-site stocktaking solution.

The SamPad Rugged Digital Assistant (RDA) combines the

flexibility of the Palm OS® with rugged durability.

Use the SamPad for stock counting with or without on screen theoretical stock values, shelf edge price checking, stock delivery input and product record creation.



Software for SamPad Handheld not supplied separately.

