

**150LB BSP THREADED FITTINGS****PRODUCT INFORMATION**

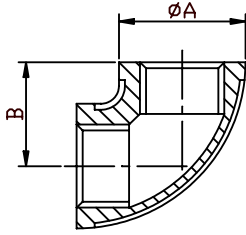
- \* 150 LB/PSI pressure rating
- \* Female threads are BSPP (parallel)
- \* Male threads are BSPT (taper)
- \* Dimensions in mm
- \* NPT threads available

- \* 316 (CF8M) stainless steel
- \* Investment castings
- \* Sizes 1/8" to 4"
- \* Weights in Kg/100
- \* Hydrostatic test to 225 PSI

**INDEX**

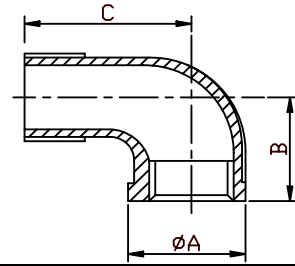
DESCRIPTION	PAGE	DESCRIPTION	PAGE
Elbow 90°	1.2	Reducing socket	1.5
Tee	1.2	Reducing hosetail	1.5
Cross	1.2	Hosetail	1.5
Male x female elbow 90°	1.2	Hexagon locknut	1.5
Elbow 45°	1.2	Full socket	1.5
Union conical female/female	1.2	Half socket	1.6
Union conical male/female	1.3	Barrel nipple	1.6
Union flat face female/female	1.3	Weld nipple	1.6
Hexagon nipple	1.3	Parallel nipple	1.6
Reducing hexagon nipple	1.3	Male bend 90°	1.6
Reducing tee	1.3	Close taper nipple	1.6
Hexagon head plug	1.4	Hosetail female cone seat	1.7
Square head plug	1.4	Hose joiner	1.7
Round cap	1.4	U-syphon	1.8
Hexagon cap	1.4	Ring (pigtail) syphon	1.8
Reducing bush	1.4		

### Elbow 90°



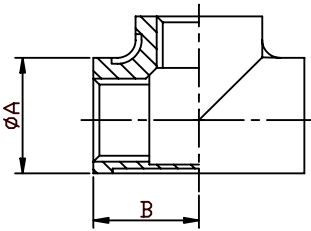
SIZE	PART No	A	B	Kg/100
1/8	E02	18	18	2.7
1/4	E04	21	20	3.8
3/8	E06	24	21	5.9
1/2	E08	29	27	9.5
3/4	E12	35	33	12.4
1	E16	43	38	21.4
1-1/4	E20	52	45	32.5
1-1/2	E24	58	50	40.3
2	E32	71	58	61.0
2-1/2	E40	87	69	106.2
3	E48	99	78	124.9
4	E64	125	97	356.2

### Street Elbow



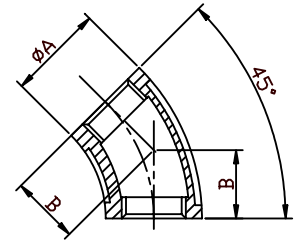
SIZE	PART No	A	B	C	Kg/100
1/8	SE02	15	19	26	3.0
1/4	SE04	18	19	28	5.6
3/8	SE06	23	23	35	5.8
1/2	SE08	29	29	42	12.0
3/4	SE12	35	33	51	14.8
1	SE16	43	38	52	23.6
1-1/4	SE20	52	45	60	36.2
1-1/2	SE24	58	50	65	42.3
2	SE32	71	58	74	68.5
2-1/2	SE40	84	68	100	121.5
3	SE48	96	78	116	180.9
4	SE64	121	97	147	446.8

### Tee



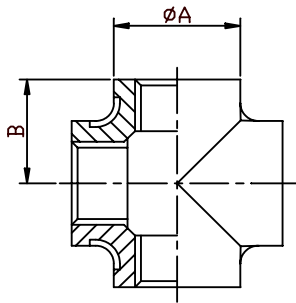
SIZE	PART No	A	B	Kg/100
1/8	T02	18	17	4.3
1/4	T04	21	21	5.4
3/8	T06	24	24	9.4
1/2	T08	29	27	11.8
3/4	T12	35	33	18.6
1	T16	43	38	31.1
1-1/4	T20	52	45	45.9
1-1/2	T24	58	50	66.0
2	T32	71	58	81.1
2-1/2	T40	87	69	187.7
3	T48	99	78	203.0
4	T64	125	97	398.0

### Elbow 45°



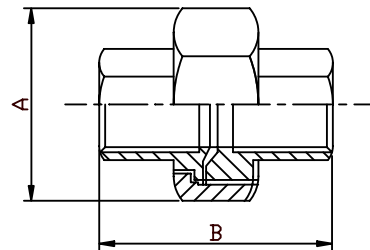
SIZE	PART No	A	B	Kg/100
1/8	EA02	18	18	3.0
1/4	EA04	21	19	5.5
3/8	EA06	26	21	8.2
1/2	EA08	31	22	10.9
3/4	EA12	37	25	13.7
1	EA16	45	31	23.2
1-1/4	EA20	55	33	36.8
1-1/2	EA24	62	37	46.9
2	EA32	75	43	70.5
2-1/2	EA40	87	49	86.0
3	EA48	99	54	119.1
4	EA64	125	65	267.6

### Cross



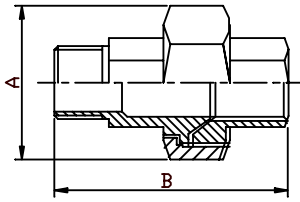
SIZE	PART No	A	B	Kg/100
1/8	C02	15	17	7.5
1/4	C04	20	19	9.8
3/8	C06	23	23	9.9
1/2	C08	28	27	15.0
3/4	C12	35	32	21.9
1	C16	44	38	35.3
1-1/4	C20	53	46	53.1
1-1/2	C24	58	48	64.3
2	C32	71	56	95.5
2-1/2	C40	87	69	234.4
3	C48	99	78	371.2
4	C64	125	97	580.0

### Union Conical Female/Female



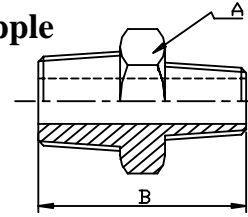
SIZE	PART No	A	B	Kg/100
1/8	UC02	25	31	10.5
1/4	UC04	30	34	9.2
3/8	UC06	35	38	14.0
1/2	UC08	42	41	14.0
3/4	UC12	47	43	21.4
1	UC16	53	52	34.1
1-1/4	UC20	71	55	50.3
1-1/2	UC24	78	59	71.6
2	UC32	92	66	99.1
2-1/2	UC40	112	83	153.8
3	UC48	126	92	203.0
4	UC64	157	113	327.0

### Union Conical Male/Female



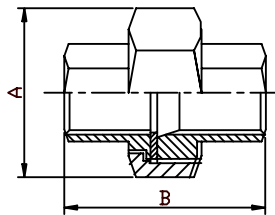
SIZE	PART No	A	B	Kg/100
1/8	UCMF02	25	40	8.8
1/4	UCMF04	30	50	8.9
3/8	UCMF06	35	50	13.9
1/2	UCMF08	42	57	16.2
3/4	UCMF12	47	66	31.8
1	UCMF16	53	68	39.6
1-1/4	UCMF20	71	83	59.8
1-1/2	UCMF24	78	86	83.6
2	UCMF32	92	94	119.3

### Reducing Nipple



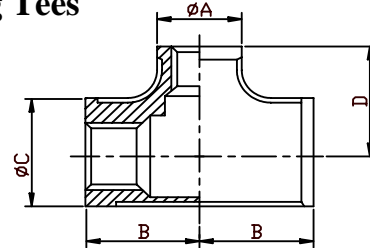
SIZE	PART No	A	B	Kg/100
1/4 X 1/8	RN0402	18	34	2.3
3/8 X 1/8	RN0602	21	36	3.2
3/8 X 1/4	RN0604	21	34	3.7
1/2 X 1/8	RN0802	26	34	4.8
1/2 X 1/4	RN0804	26	34	4.6
1/2 X 3/8	RN0806	26	41	5.0
3/4 X 1/4	RN1204	30	37	8.7
3/4 X 3/8	RN1206	30	37	9.6
3/4 X 1/2	RN1208	30	45	8.5
1 X 1/4	RN1604	35	39	12.0
1 X 3/8	RN1606	35	40	11.8
1 X 1/2	RN1608	35	43	13.4
1 X 3/4	RN1612	37	50	13.3
1-1/4 X 1/2	RN2008	46	48	22.8
1-1/4 X 3/4	RN2012	46	52	18.2
1-1/4 X 1	RN2016	46	54	24.4
1-1/2 X 1/2	RN2408	50	49	25.1
1-1/2 X 3/4	RN2412	50	53	24.5
1-1/2 X 1	RN2416	50	53	26.7
1-1/2 X 1-1/4	RN2420	50	59	26.1
2 X 1/2	RN3208	63	52	32.3
2 X 3/4	RN3212	63	56	32.0
2 X 1	RN3216	63	57	43.3
2 X 1-1/4	RN3220	63	58	35.9
2 X 1-1/2	RN3224	64	64	39.9
2-1/2 X 1-1/2	RN4024	80	66	72.0
2-1/2 X 2	RN4032	76	77	74.7
3 X 1-1/2	RN4824	95	72	96.0
3 X 2	RN4832	95	74	94.8
3 X 2-1/2	RN4840	95	84	107.7
4 X 2	RN6432	125	82	196.6
4 X 2-1/2	RN6440	125	82	175.0
4 X 3	RN6448	117	94	160.1

### Union Flat Seat Female/Female Teflon Gasket



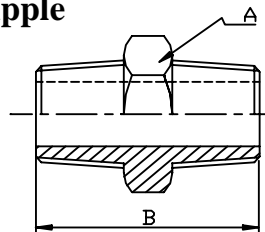
SIZE	PART No	A	B	Kg/100
1/8	UF02	25	29	8.5
1/4	UF04	30	38	7.6
3/8	UF06	35	38	9.8
1/2	UF08	42	41	14.1
3/4	UF12	47	48	21.9
1	UF16	53	50	41.2
1-1/4	UF20	71	59	48.8
1-1/2	UF24	78	64	71.2
2	UF32	92	69	98.6

### Reducing Tees



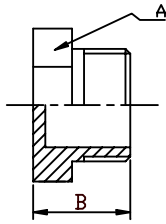
SIZE	PART No	A	B	C	D	Kg/100
1/4 X 1/8	RT0402	18.0	17	18.0	17	5.0
3/8 X 1/4	RT0604	18.0	21	23.5	21	9.7
1/2 X 1/4	RT0804	20.8	24	28.8	24	12.1
1/2 X 3/8	RT0806	23.3	26	28.8	25	11.9
3/4 X 3/8	RT1206	23.3	28	35.8	28	19.2
3/4 X 1/2	RT1208	30.0	30	37.0	31	18.9
1 X 1/2	RT1608	30.5	32	44.0	33	31.9
1 X 3/4	RT1612	35.8	34	43.3	35	31.5
1-1/4 X 3/4	RT2012	35.8	38	51.4	40	46.8
1-1/4 X 1	RT2016	43.3	40	51.4	42	46.2
1-1/2 X 3/4	RT2412	35.8	38	57.9	43	57.9
1-1/2 X 1	RT2416	43.3	41	57.9	45	57.5
1-1/2 X 1-1/4	RT2420	28.8	45	70.6	48	56.9
2 X 3/4	RT3212	35.8	41	70.6	49	82.0
2 X 1	RT3216	43.3	44	70.6	51	81.9
2 X 1-1/4	RT3220	51.4	48	70.6	54	81.5
2 X 1-1/2	RT3224	57.9	52	70.6	55	81.2

### Hexagon Nipple



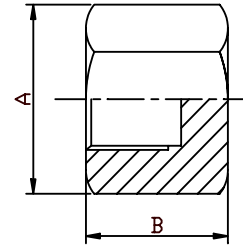
SIZE	PART No	A	B	Kg/100
1/8	HN02	12	24	1.6
1/4	HN04	16	28	2.2
3/8	HN06	19	28	4.0
1/2	HN08	22	34	7.0
3/4	HN12	30	40	8.9
1	HN16	36	46	14.1
1-1/4	HN20	46	53	20.9
1-1/2	HN24	50	54	30.0
2	HN32	66	62	41.7
2-1/2	HN40	80	70	75.4
3	HN48	90	78	89.6
4	HN64	120	94	133.8

### Hexagon Plug



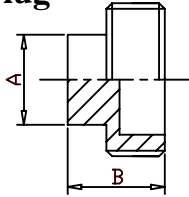
SIZE	PART No	A	B	Kg/100
1/8	HP02	12	17	1.1
1/4	HP04	16	18	1.9
3/8	HP06	20	18	3.4
1/2	HP08	24	25	4.4
3/4	HP12	30	26	6.4
1	HP16	38	29	9.4
1-1/4	HP20	46	35	16.6
1-1/2	HP24	52	38	20.2
2	HP32	65	39	32.7
2-1/2	HP40	81	44	66.8
3	HP48	94	54	82.4
4	HP64	119	55	127.5

### Hexagon Cap



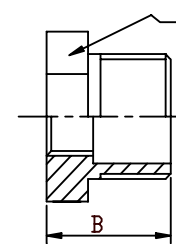
SIZE	PART No	A	B	Kg/100
1/8	HC02	45	13	1.6
1/4	HC04	18	17	2.2
3/8	HC06	21	19	4.3
1/2	HC08	27	20	6.1
3/4	HC12	30	24	9.4
1	HC16	38	25	13.0
1-1/4	HC20	50	28	23.0
1-1/2	HC24	55	28	28.5
2	HC32	70	34	55.9
2-1/2	HC40	92	40	86.1
3	HC48	109	45	108.4
4	HC64	132	50	198.1

### Square Head Plug



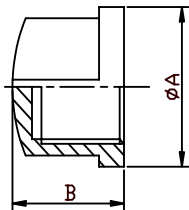
SIZE	PART No	A	B	Kg/100
1/8	SP02	6	19	0.5
1/4	SP04	9	20	1.4
3/8	SP06	11	22	2.0
1/2	SP08	13	25	3.5
3/4	SP12	16	27	5.7
1	SP16	20	32	10.3
1-1/4	SP20	24	35	14.1
1-1/2	SP24	25	37	17.1
2	SP32	32	38	30.6
2-1/2	SP40	42	48	35.9
3	SP48	46	52	55.0
4	SP64	58	62	105.5

### Reducing Bush



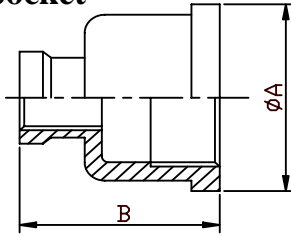
SIZE	PART No	A	B	Kg/100
1/4 x 1/8	RB0402	16	15	1.2
3/8 X 1/8	RB0602	18	17	2.4
3/8 X 1/4	RB0604	18	17	1.8
1/2 X 1/8	RB0802	26	21	4.3
1/2 X 1/4	RB0804	26	21	3.8
1/2 X 3/8	RB0806	26	21	2.3
3/4 X 1/4	RB1204	30	24	6.7
3/4 X 3/8	RB1206	30	24	6.1
3/4 X 1/2	RB1208	30	24	5.2
1 X 1/4	RB1604	35	27	10.5
1 X 3/8	RB1606	35	27	10.5
1 X 1/2	RB1608	35	27	9.0
1 X 3/4	RB1612	35	27	7.8
1-1/4 X 3/8	RB2006	45	30	16.6
1-1/4 X 1/2	RB2008	45	30	18.6
1-1/4 X 3/4	RB2012	45	30	17.9
1-1/4 X 1	RB2016	45	30	12.8
1-1/2 X 1/2	RB2408	52	36	23.2
1-1/2 X 3/4	RB2412	52	36	22.6
1-1/2 X 1	RB2416	52	36	20.3
1-1/2 X 1-1/4	RB2420	52	36	14.0
2 X 1/2	RB3208	63	36	38.8
2 X 3/4	RB3212	63	36	44.5
2 X 1	RB3216	63	36	38.6
2 X 1-1/4	RB3220	63	36	34.4
2 X 1-1/2	RB3224	63	36	29.3
2-1/2 X 1-1/2	RB4024	81	45	65.4
2-1/2 X 2	RB4032	81	45	51.0
3 X 1-1/2	RB4824	95	47	97.2
3 X 2	RB4832	95	47	85.5
3 X 2-1/2	RB4840	95	47	71.8
4 X 2	RB6432	119	52	178.2
4 X 2-1/2	RB6440	119	52	160.5
4 X 3	RB6448	119	52	121.8

### Round Cap



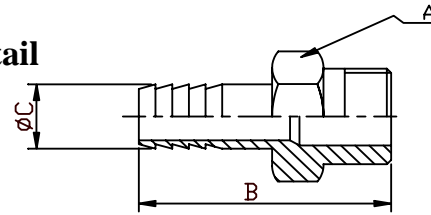
SIZE	PART No	A	B	Kg/100
1/8	RC02	18	15	1.7
1/4	RC04	21	17	2.9
3/8	RC06	24	17	3.6
1/2	RC08	27	19	4.3
3/4	RC12	35	24	11.7
1	RC16	42	29	11.4
1-1/4	RC20	52	32	17.6
1-1/2	RC24	58	34	22.5
2	RC32	69	38	36.1
2-1/2	RC40	91	43	47.0
3	RC48	106	48	80.3
4	RC64	133	53	133.8

### Reducing Socket



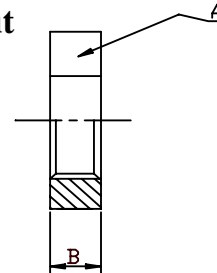
SIZE	PART No	A	B	Kg/100
1/4 X 1/8	RS0402	22	26	3.3
3/8 X 1/8	RS0602	23	30	4.5
3/8 X 1/4	RS0604	26	29	4.9
1/2 X 1/8	RS0802	29	34	5.1
1/2 X 1/4	RS0804	30	33	5.5
1/2 X 3/8	RS0806	30	34	6.9
3/4 X 1/4	RS1204	37	35	8.2
3/4 X 3/8	RS1206	37	37	11.4
3/4 X 1/2	RS1208	37	37	10.9
1 X 1/4	RS1604	44	42	12.8
1 X 3/8	RS1606	44	42	14.5
1 X 1/2	RS1608	44	43	13.4
1 X 3/4	RS1612	44	43	12.9
1-1/4 X 1/2	RS2008	53	48	16.3
1-1/4 X 3/4	RS2012	53	48	16.7
1-1/4 X 1	RS2016	53	52	22.3
1-1/2 X 1/2	RS2408	59	51	24.0
1-1/2 X 3/4	RS2412	59	49	22.4
1-1/2 X 1	RS2416	59	53	30.7
1-1/2 X 1-1/4	RS2420	59	53	38.7
2 X 1/2	RS3208	72	51	34.0
2 X 3/4	RS3212	72	51	33.1
2 X 1	RS3216	72	56	30.5
2 X 1-1/4	RS3220	72	56	38.4
2 X 1-1/2	RS3224	72	57	37.0
2-1/2 X 1-1/2	RS4024	87	60	75.0
2-1/2 X 2	RS4032	87	61	78.4
3 X 1-1/2	RS4824	99	62	73.8
3 X 2	RS4832	99	62	93.1
3 X 2-1/2	RS4840	99	62	75.9
4 X 2	RS6432	128	65	176.3
4 X 2-1/2	RS6440	128	65	150.0
4 X 3	RS6448	128	65	131.7

### Hosetail



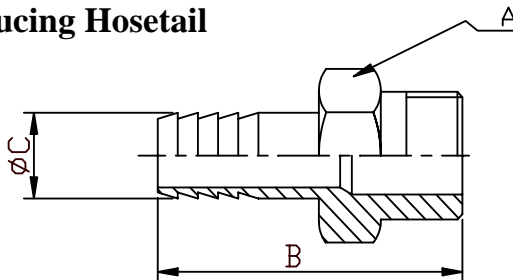
SIZE THREAD	SIZE C HOSE	PART No	A	B	Kg/100
1/4	6.30	HT04	17	47	2.8
1/4	8.00	HT05	17	47	3.1
3/8	9.50	HT06	20	55	4.5
1/2	12.70	HT08	24	64	6.7
3/4	19.05	HT12	31	68	12.2
1	25.40	HT16	39	71	17.4
1-1/4	31.80	HT20	46	80	30.5
1-1/2	38.10	HT24	52	95	38.9
2	50.80	HT32	62	105	62.7
2-1/2	63.50	HT40	80	107	104.6
3	76.20	HT48	91	112	158.0
4	101.60	HT64	117	130	215.0

### Hexagon Locknut



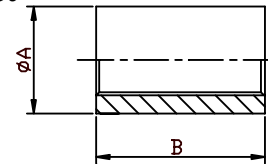
SIZE	PART No	A	B	Kg/100
1/8	LN02	14	6	1.0
1/4	LN04	23	7	1.9
3/8	LN06	26	8	1.7
1/2	LN08	31	10	2.6
3/4	LN12	37	11	5.8
1	LN16	46	10	7.1
1-1/4	LN20	55	11	12.3
1-1/2	LN24	63	12	14.8
2	LN32	76	13	19.5
2-1/2	LN40	95	16	33.8
3	LN48	105	19	43.0
4	LN64	131	20	88.7

### Reducing Hosetail



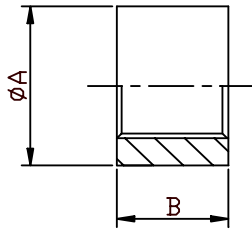
SIZE THREAD	SIZE C HOSE	PART No	A	B	Kg/100
1/8	6.30	RHT0402	13	45	3.0
1/4	9.50	RHT0604	17	47	4.2
1/4	12.70	RHT0804	17	47	6.2
3/8	12.70	RHT0806	20	55	6.5
1/2	19.05	RHT1208	31	68	11.5
3/4	25.40	RHT1612	39	71	16.5

### Full Socket



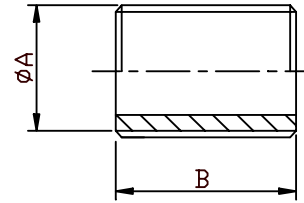
SIZE	PART No	A	B	Kg/100
1/8	S02	14.0	17	1.0
1/4	S04	18.5	25	2.2
3/8	S06	21.3	26	3.2
1/2	S08	26.4	34	6.3
3/4	S12	31.8	36	8.3
1	S16	39.5	43	15.2
1-1/4	S20	48.3	47	20.6
1-1/2	S24	54.5	48	25.3
2	S32	66.3	56	36.2
2-1/4	S36	76.2	38	39.4
2-1/2	S40	82.0	65	47.4
3	S48	95.0	71	66.1
4	S64	122	83	124.2

### Half Socket



SIZE	PART No	A	B	Kg/100
1/8	HS02	14.0	7	0.39
1/4	HS04	18.5	11	0.94
3/8	HS06	21.3	12	1.5
1/2	HS08	26.4	15	2.7
3/4	HS12	31.8	16	3.8
1	HS16	39.5	20	6.1
1-1/4	HS20	48.3	22	9.3
1-1/2	HS24	54.5	22	11.6
2	HS32	66.3	26	16.3
2-1/2	HS40	82.0	30	22.3
3	HS48	95.0	33	31.1
4	HS64	122	39	53.1

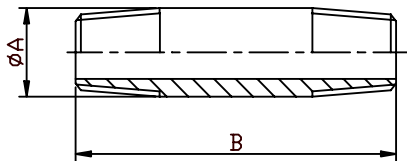
### Parallel Nipple



SIZE	PART No	A	B	Kg/100
1/4	PN04	13.5	18	0.6
3/8	PN06	17.2	22	0.9
1/2	PN08	21.3	25	1.8
3/4	PN12	26.9	30	2.7
1	PN16	33.7	35	4.3
1-1/4	PN20	42.4	38	6.5
1-1/2	PN24	48.3	38	6.6
2	PN32	60.3	45	11.9
2-1/2	PN40	76.1	55	19.1
3	PN48	88.9	60	26.4
4	PN64	114.3	70	54.6

\*\* Other lengths available. Please state requirements\*\*

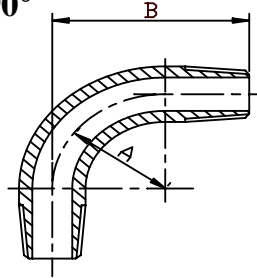
### Barrel Nipple



SIZE	PART No	A	B	Kg/100
1/8	BN02	10.2	30	1.3
1/4	BN04	13.5	30	2.1
3/8	BN06	17.2	40	2.5
1/2	BN08	21.3	60	6.6
3/4	BN12	26.9	60	8.5
1	BN16	33.7	60	12.9
1-1/4	BN20	42.4	80	23.4
1-1/2	BN24	48.3	80	25.2
2	BN32	60.3	100	42.7
2-1/2	BN40	76.1	100	90.0
3	BN48	88.9	120	104.8
4	BN64	114.3	120	138.1

\*\* Other lengths available. Please state requirements\*\*

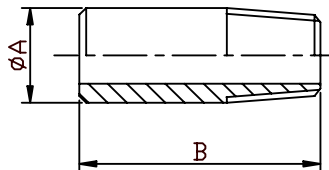
### Male Bend 90°



SIZE	PART No	A	B	Kg/100
1/4	MB04	31.8	60	6.4
3/8	MB06	38.1	70	10.2
1/2	MB08	44.5	80	16.8
3/4	MB12	57.2	100	24.4
1	MB16	76.2	120	44.9
1-1/4	MB20	88.9	140	87.9
1-1/2	MB24	108.0	160	88.8
2	MB32	152.4	190	148.9
2-1/2	MB40	228.6	240	400.0
3	MB48	304.8	290	530.0

\*\* 2-1/2" To order only \*\*

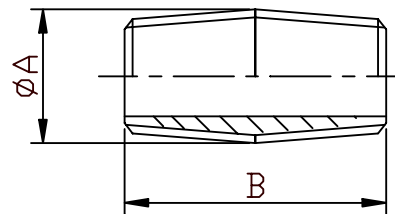
### Weld Nipple



SIZE	PART No	A	B	Kg/100
1/8	WN02	10.2	30	1.1
1/4	WN04	13.5	30	1.7
3/8	WN06	17.2	30	2.5
1/2	WN08	21.3	35	3.8
3/4	WN12	26.9	40	6.2
1	WN16	33.7	40	8.8
1-1/4	WN20	42.4	50	15.0
1-1/2	WN24	48.3	50	16.8
2	WN32	60.3	50	21.7
2-1/2	WN40	76.1	60	31.0
3	WN48	88.9	70	64.5
4	WN64	114.3	80	104.4

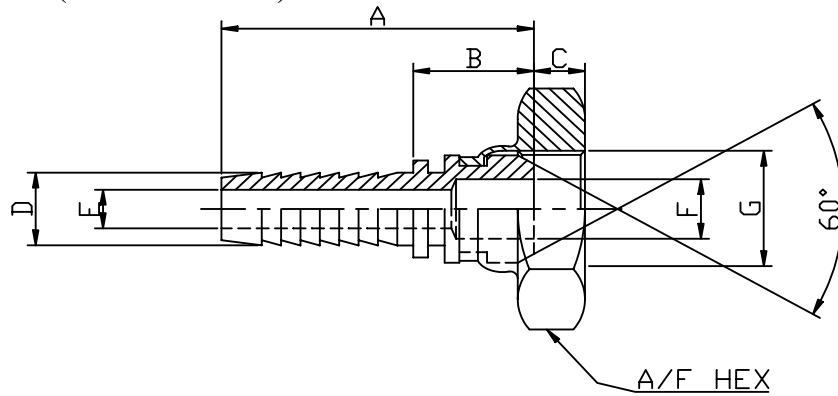
\*\* Other lengths available. Please state requirements\*\*

### Close Taper Nipple



SIZE	PART No	A	B	Kg/100
1/4	CTN04	13.5	24	1.1
3/8	CTN06	17.2	25	1.9
1/2	CTN08	21.3	29	2.4
3/4	CTN12	26.9	32	4.2
1	CTN16	33.7	38	8.2
1-1/4	CTN20	42.4	38	12.4
1-1/2	CTN24	48.3	44	13.4
2	CTN32	60.3	44	19.5
M	CTN40	76.1	57	60.4
3	CTN48	88.9	64	63.4
4	CTN64	114.3	76	84.9

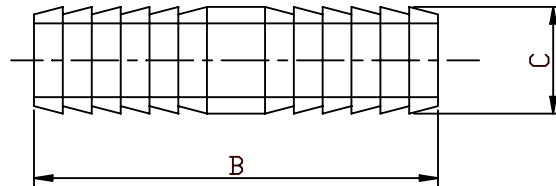
### Hosetail female (Cone seat swivel)



HOSE D	G BSPP	PART No	A	B	C	E	F	A/F	Kg/100
1/4	1/4	<b>FHTC04</b>	45.5	18.0	4.3	4.5	4.5	18.0	5
3/8	3/8	<b>FHTC06</b>	51.3	21.7	4.8	7.2	7.2	25.7	7
1/2	1/2	<b>FHTC08</b>	52.8	21.7	7.1	9.5	9.5	25.7	10
3/4	3/4	<b>FHTC12</b>	64.2	25.9	8.4	15.1	15.1	31.8	17
1	1	<b>FHTC16</b>	74.8	28.3	9.4	20.6	20.6	38.1	22
1-1/4	1-1/4	<b>FHTC20</b>	84.0	30.1	10.7	27.0	27.0	47.2	40
1-1/2	1-1/2	<b>FHTC24</b>	92.7	35.6	11.9	32.5	32.5	56.4	48
2	2	<b>FHTC32</b>	111.0	38.0	12.9	44.3	44.3	69.9	69

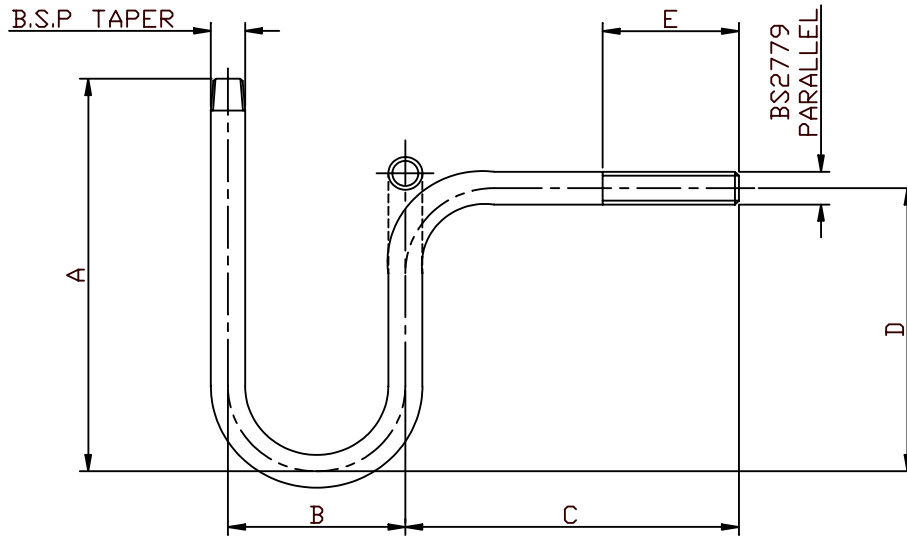
**\*\* ALSO AVAILABLE WITH FLAT SEAT \*\***

### Hose joiner



SIZE	PART No	B	C	Kg/100
1/4	<b>HJ04</b>	50.8	6.3	1.8
5/16	<b>HJ05</b>	50.8	8.0	2.0
3/8	<b>HJ06</b>	50.8	9.5	3.0
1/2	<b>HJ08</b>	50.8	12.7	3.5
3/4	<b>HJ12</b>	63.6	19.1	5.5
1	<b>HJ16</b>	76.2	25.4	13.0
1-1/4	<b>HJ20</b>	92.3	31.8	23.4
1-1/2	<b>HJ24</b>	114.3	38.1	39.3
2	<b>HJ32</b>	152.4	50.8	62.6

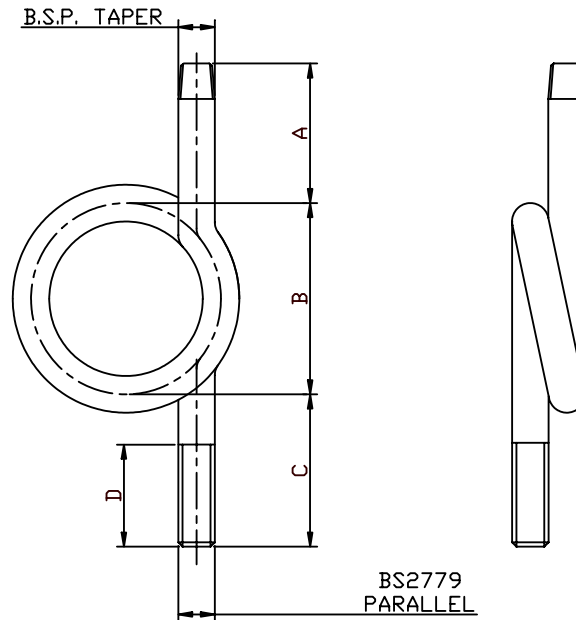
### U-syphon (with 2 backnuts)



SIZE	PART No	A	B	C	D	E	Kg/100
1/4	<b>US04</b>	154.5	68.5	86.0	132.0	38.5	25.0
3/8	<b>US06</b>	163.0	73.0	94.5	136.5	40.0	36.2
1/2	<b>US08</b>	210.5	91.5	124.0	174.5	55.0	69.2

### Ring syphon (with 2 backnuts)

(Also known as pigtail syphon)



SIZE	PART No	A	B	C	D	Kg/100
1/4	<b>PTS04</b>	69.5	91	91.5	38.5	34.1
3/8	<b>PTS06</b>	86.0	99	112.0	40.0	53.2
1/2	<b>PTS08</b>	104.0	100	127.0	55.0	84.4