

3000LB PIPE FITTINGS



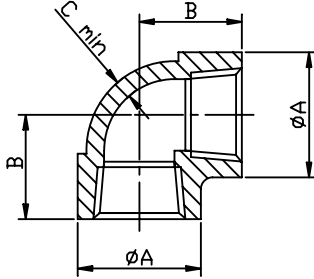
PRODUCT INFORMATION

- * ASTM A182 316/L stainless steel
- * Dimensions to ANSI B16.11/BS3799
- * 3000 LB rating (6000 available)
- * Sizes 1/4" to 2"
- * Larger sizes available
- * Dimensions in mm
- * NPT threaded to ANSI B2.1
- * Socket weld ends (SW)
- * OD Socket weld ends available
- * Other grades and threads available
- * Weights in Kg/100

INDEX

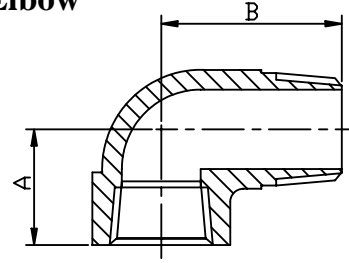
DESCRIPTION	PAGE	DESCRIPTION	PAGE
Elbow 90° NPT	3.2	Elbow 90° SW	3.5
Street Elbow NPT	3.2	Tee SW	3.5
Tee NPT	3.2	Cross SW	3.5
Elbow 45° NPT	3.2	Elbow 45° SW	3.5
Union conical Fem/Fem NPT	3.2	Union conical SW	3.5
Union conical Male/Fem NPT	3.3	Round cap SW	3.6
Hexagon Nipple NPT	3.3	Full coupling SW	3.6
Reducing hexagon nipple NPT	3.3	Half coupling SW	3.6
Hexagon plug NPT	3.3	Reducing coupling SW	3.6
Square head plug NPT	3.3	Outlet fittings --- various	3.6
Round cap NPT	3.3	Reducing inserts SW	3.7
Reducing bush NPT	3.4		
Full coupling NPT	3.4		
Half coupling NPT	3.4		
Reducing coupling NPT	3.4		
Pipe nipples-- various	3.4		

Elbow 90°



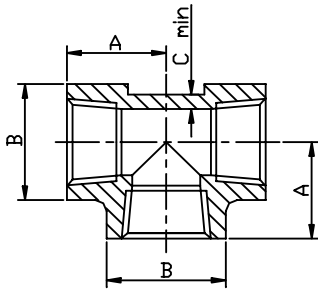
SIZE	PART No	A	B	C	Kg/100
1/4	3E04N	25	25	3.5	14.0
3/8	3E06N	33	29	3.5	27.3
1/2	3E08N	38	33	4.0	45.9
3/4	3E12N	46	38	4.5	65.9
1	3E16N	56	44	5.0	111.7
1-1/4	3E20N	62	51	5.5	127.8
1-1/2	3E24N	75	60	5.5	245.6
2	3E32N	84	64	7.0	270.0

Street Elbow



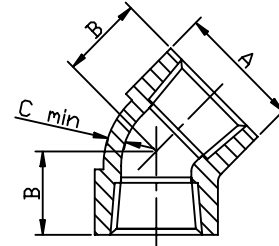
SIZE	PART No	A	B	C	Kg/100
1/4	3SE04N	25	32		15.2
3/8	3SE06N	30	39		24.9
1/2	3SE08N	34	44		32.4
3/4	3SE12N	38	49		50.4
1	3SE16N	47	59		77.2
1-1/4	3SE20N	53	65		103.0
1-1/2	3SE24N	62	75		137.0
2	3SE32N	68	83		236.0

Tee



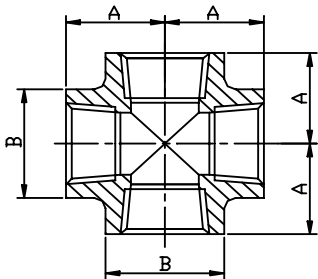
SIZE	PART No	A	B	C	Kg/100
1/4	3T04N	25	25	3.5	19.3
3/8	3T06N	29	33	3.5	37.8
1/2	3T08N	33	38	4.0	57.1
3/4	3T12N	38	46	4.5	85.5
1	3T16N	44	56	5.0	142.0
1-1/4	3T20N	51	62	5.5	171.4
1-1/2	3T24N	60	75	5.5	325.8
2	3T32N	64	84	7.0	344.4

Elbow 45°



SIZE	PART No	A	B	C	Kg/100
1/4	3EA04N	25	19	3.5	10.8
3/8	3EA06N	33	22	3.5	25.4
1/2	3EA08N	38	25	4.0	32.9
3/4	3EA12N	46	29	4.5	51.4
1	3EA16N	56	33	5.0	85.2
1-1/4	3EA20N	62	35	5.5	96.1
1-1/2	3EA24N	75	43	5.5	184.5
2	3EA32N	84	45	7.0	223.9

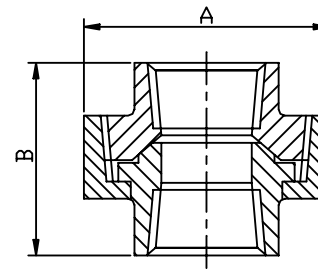
Cross



SIZE	PART No	A	B	Kg/100
1/4	3C04N	25	25	21
3/8	3C06N	29	33	43
1/2	3C08N	33	38	66
3/4	3C12N	38	46	105
1	3C16N	44	56	169
1-1/4	3C20N	51	62	199
1-1/2	3C24N	60	75	369
2	3C32N	64	84	377

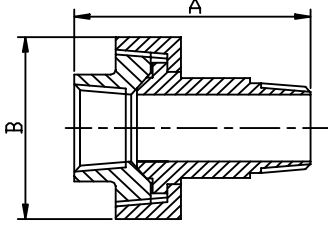
Available to order

Union Conical Female/Female



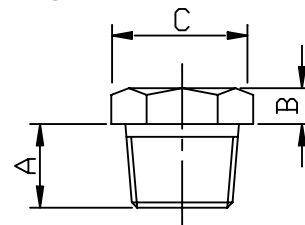
SIZE	PART No	A	B	Kg/100
1/4	3UC04N	36	43	17.2
3/8	3UC06N	41	48	40.0
1/2	3UC08N	46	52	35.8
3/4	3UC12N	56	57	52.5
1	3UC16N	65	63	78.2
1-1/4	3UC20N	80	68	131.3
1-1/2	3UC24N	88	78	150.3
2	3UC32N	105	91	253.2

Union Conical Male/Female



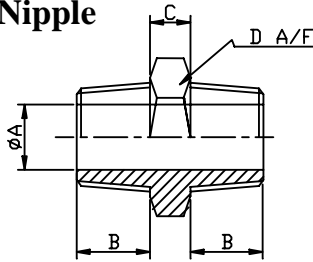
SIZE	PART No	A	B	Kg/100
1/4	3UCMF04N	61	32	19.2
3/8	3UCMF06N	69	38	42.6
1/2	3UCMF08N	75	46	41.0
3/4	3UCMF12N	80	56	60.8
1	3UCMF16N	90	65	90.5
1-1/4	3UCMF20N	98	80	120.0
1-1/2	3UCMF24N	100	88	190.0
2	3UCMF32N	120	105	270.0

Hexagon Plug



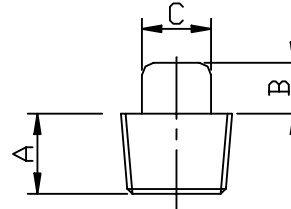
SIZE	PART No	A	B	C	Kg/100
1/8	3HP02N	9	6	11	1.3
1/4	3HP04N	13	6	16	2.9
3/8	3HP06N	13	8	18	4.4
1/2	3HP08N	16	8	22	6.8
3/4	3HP12N	18	10	28	12.6
1	3HP16N	21	10	35	22.1
1-1/4	3HP20N	22	14	47	45.4
1-1/2	3HP24N	22	16	52	58.7
2	3HP32N	24	17	64	101.2

Hexagon Nipple



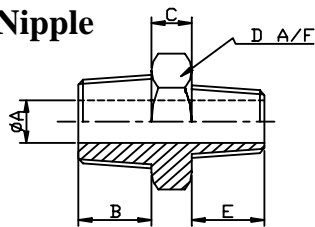
SIZE	PART No	A	B	C	D	Kg/100
1/8	3HN02N	5	9	6	11	1.6
1/4	3HN04N	8	13	6	15	3.0
3/8	3HN06N	11	13	8	18	4.5
1/2	3HN08N	14	16	8	22	7.4
3/4	3HN12N	19	18	10	27	12.1
1	3HN16N	24	21	10	35	21.0
1-1/4	3HN20N	32	22	13	46	38.3
1-1/2	3HN24N	38	22	16	50	39.5
2	3HN32N	49	24	17	62	64.0

Square Head Plug



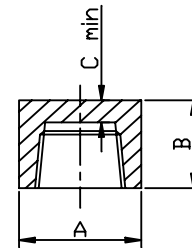
SIZE	PART No	A	B	C	Kg/100
1/8	3SP02N	9	6	7	1.5
1/4	3SP04N	11	6	9	1.9
3/8	3SP06N	13	8	11	2.8
1/2	3SP08N	14	9	14	6.1
3/4	3SP12N	16	11	16	8.8
1	3SP16N	19	13	21	16.2
1-1/4	3SP20N	21	14	24	31.9
1-1/2	3SP24N	21	16	29	43.4
2	3SP32N	22	18	33	72.2

Reducing Nipple



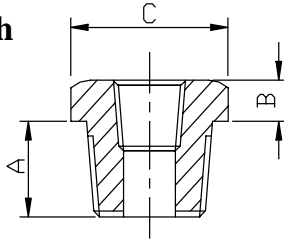
SIZE	PART No	A	B	C	D	E	Kg/100
1/4 X 1/8	3RN0402N	5	13	6	16	9	2.9
3/8 X 1/8	3RN0602N	5	13	8	18	9	5.0
3/8 X 1/4	3RN0604N	8	13	8	18	13	4.9
1/2 X 1/4	3RN0804N	8	16	8	22	13	7.8
1/2 X 3/8	3RN0806N	11	16	8	22	13	7.5
3/4 X 3/8	3RN1206N	11	18	9	28	13	11.9
3/4 X 1/2	3RN1208N	14	18	9	28	16	12.5
1 X 3/8	3RN1606N	11	21	9	35	13	24.5
1 X 1/2	3RN1608N	14	21	9	35	16	23.1
1 X 3/4	3RN1612N	19	21	9	35	18	20.5
1-1/4 X 1/2	3RN2008N	14	22	14	47	15	45.0
1-1/4 X 3/4	3RN2012N	19	22	14	47	18	43.2
1-1/4 X 1	3RN2016N	24	22	14	47	21	40.4
1-1/2 X 3/4	3RN2412N	19	22	16	52	18	58.0
1-1/2 X 1	3RN2416N	24	22	16	52	21	56.2
1-1/2 X 1-1/4	3RN2420N	32	22	16	52	22	56.3
2 X 1	3RN3216N	24	24	18	64	21	95.0
2 X 1-1/4	3RN3220N	32	24	18	64	22	90.0
2 X 1-1/2	3RN3224N	38	24	18	64	22	82.2

Round Cap



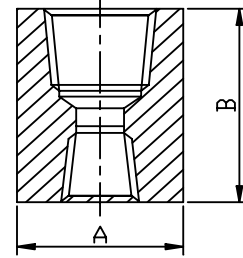
SIZE	PART No	A	B	C	Kg/100
1/8	3RC02N	16	19	5.0	4.0
1/4	3RC04N	19	25	5.0	5.1
3/8	3RC06N	22	25	5.0	5.4
1/2	3RC08N	29	32	6.5	10.6
3/4	3RC12N	35	37	6.5	18.6
1	3RC16N	44	41	9.5	35.6
1-1/4	3RC20N	57	44	9.5	53.1
1-1/2	3RC24N	64	44	11.0	78.2
2	3RC32N	76	48	12.5	103.3

Reducing Bush



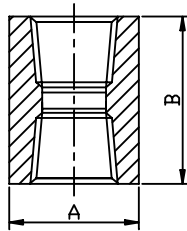
SIZE	PART No	A	B	C	Kg/100
1/4 X 1/8	3RB0402N	13	3	16	1.9
3/8 X 1/8	3RB0602N	13	4	18	2.8
3/8 X 1/4	3RB0604N	13	4	18	2.2
1/2 X 1/4	3RB0804N	16	5	22	4.1
1/2 X 3/8	3RB0806N	16	5	22	3.1
3/4 X 3/8	3RB1206N	18	6	28	6.5
3/4 X 1/2	3RB1208N	18	6	28	5.6
1 X 3/8	3RB1606N	21	6	35	14.0
1 X 1/2	3RB1608N	21	6	35	13.6
1 X 3/4	3RB1612N	21	6	35	9.5
1-1/4 X 1/2	3RB2008N	22	7	47	20.0
1-1/4 X 3/4	3RB2012N	22	7	47	19.4
1-1/4 X 1	3RB2016N	22	7	47	18.4
1-1/2 X 3/4	3RB2412N	22	8	52	30.0
1-1/2 X 1	3RB2416N	22	8	52	28.6
1-1/2 X 1-1/4	3RB2420N	22	8	52	26.0
2 X 1	3RB3216N	24	9	64	45.0
2 X 1-1/4	3RB3220N	24	9	64	42.0
2 X 1-1/2	3RB3224N	24	9	64	39.0

Reducing Coupling



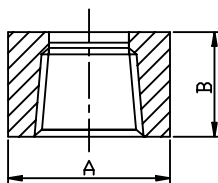
SIZE	PART No	A	B	Kg/100
1/4 X 1/8	3RS0402N	19	35	6.0
3/8 X 1/4	3RS0604N	25	38	7.2
1/2 X 1/4	3RS0804N	29	48	17.0
1/2 X 3/8	3RS0806N	29	48	15.3
3/4 X 3/8	3RS1206N	35	51	27.0
3/4 X 1/2	3RS1208N	35	51	24.2
1 X 1/2	3RS1608N	45	60	52.0
1 X 3/4	3RS1612N	45	60	50.3
1-1/4 X 3/4	3RS2012N	57	67	105.0
1-1/4 X 1	3RS2016N	57	67	102.8
1-1/2 X 1	3RS2416N	64	79	148.0
1-1/2 X 1-1/4	3RS2420N	64	79	130.0
2 X 1-1/4	3RS3220N	76	86	180.0
2 X 1-1/2	3RS3224N	76	86	167.6

Full Coupling



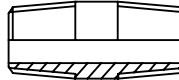
SIZE	PART No	A	B	Kg/100
1/8	3S02N	16	32	3.5
1/4	3S04N	19	35	5.7
3/8	3S06N	22	38	6.0
1/2	3S08N	29	48	12.8
3/4	3S12N	35	51	20.8
1	3S16N	45	60	42.8
1-1/4	3S20N	57	67	72.4
1-1/2	3S24N	64	79	101.2
2	3S32N	76	86	140.3

Half Coupling

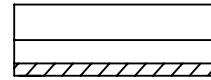


SIZE	PART No	A	B	Kg/100
1/8	3HS02N	16	16	2.0
1/4	3HS04N	19	18	2.9
3/8	3HS06N	22	19	3.0
1/2	3HS08N	29	24	6.6
3/4	3HS12N	35	25	10.8
1	3HS16N	45	30	21.9
1-1/4	3HS20N	57	33	36.7
1-1/2	3HS24N	64	40	51.0
2	3HS32N	76	43	71.5

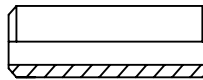
Barrel Nipple



Plain Nipple



Plain Nipple Beveled



Concentric Swage Nipple



Eccentric Swage Nipple



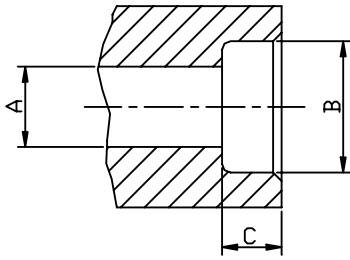
The above nipples are available in various lengths, end connections and wall thickness (see page 10.4)

Please state requirements when enquiring.

The end connections are:

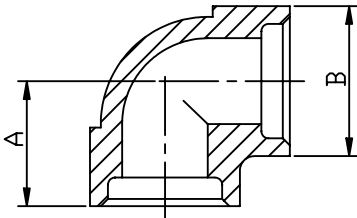
- | | |
|---------|---------------------------------------|
| PBE | Plain Both Ends. |
| BBE | Beveled Both Ends. |
| TBE | Threaded Both Ends. |
| PLE/BSE | Plain Large End/Beveled Small End. |
| PLE/TSE | Plain Large End/Threaded Small End. |
| BLE/PSE | Beveled Large End/Plain Small End. |
| BLE/TSE | Beveled Large End/Threaded Small End. |
| TLE/PSE | Threaded Large End/Plain Small End. |
| TLE/BSE | Threaded Large End/Beveled Small End. |

Dimensions of Socket Weld Ends



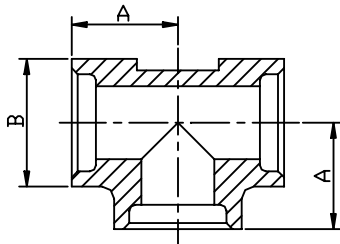
SIZE	A	B	C
1/8	6.9	10.7	9.4
1/4	9.1	14.0	9.4
3/8	12.4	17.5	9.4
1/2	15.8	21.6	9.4
3/4	20.8	27.	12.7
1	26.7	33.8	12.7
1-1/4	35.0	42.4	12.7
1-1/2	40.9	48.5	12.7
2	52.6	61.2	15.8

Elbow 90°



SIZE	PART No	A	B	Kg/100
1/4	3E04SW	21	22	13.7
3/8	3E06SW	25	25	10.8
1/2	3E08SW	25	33	21.8
3/4	3E12SW	32	38	33.8
1	3E16SW	35	46	50.2
1-1/4	3E20SW	40	56	76.6
1-1/2	3E24SW	45	62	95.7
2	3E32SW	54	75	161.2

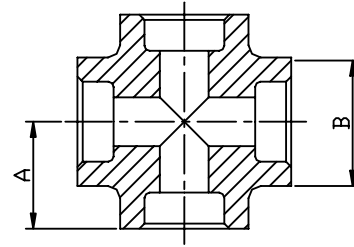
Tee



SIZE	PART No	A	B	Kg/100
1/4	3T04SW	21	22	17.3
3/8	3T06SW	23	25	14.2
1/2	3T08SW	25	33	31.9
3/4	3T12SW	32	38	44.1
1	3T16SW	35	46	61.5
1-1/4	3T20SW	40	56	101.6
1-1/2	3T24SW	45	62	124.3
2	3T32SW	54	75	179.3

REDUCING TEES AVAILABLE

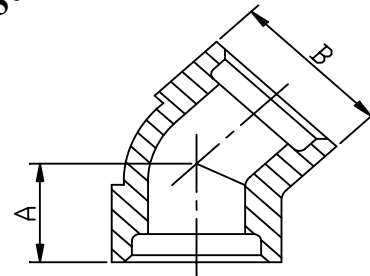
Cross



SIZE	PART No	A	B	Kg/100
1/4	3C04SW	21	22	18.0
3/8	3C06SW	23	25	15.0
1/2	3C08SW	25	33	36.0
3/4	3C12SW	32	38	45.0
1	3C16SW	35	46	76.0
1-1/4	3C20SW	40	56	109.0
1-1/2	3C24SW	45	62	145.0
2	3C32SW	54	75	235.0

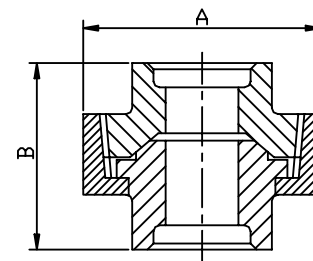
** AVAILABLE TO ORDER **

Elbow 45°



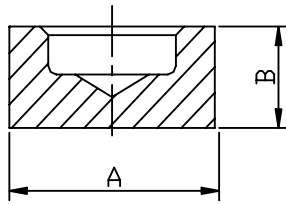
SIZE	PART No	A	B	Kg/100
1/4	3EA04SW	18	22	12.0
3/8	3EA06SW	18	25	9.2
1/2	3EA08SW	21	33	21.7
3/4	3EA12SW	25	38	25.1
1	3EA16SW	27	46	42.1
1-1/4	3EA20SW	30	56	60.2
1-1/2	3EA24SW	33	62	82.5
2	3EA32SW	41	75	121.8

Union Conical Female/Female



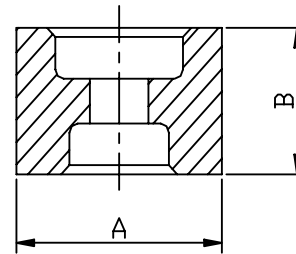
SIZE	PART No	A	B	Kg/100
1/4	3UC04SW	37	48	16.4
3/8	3UC06SW	46	52	39.2
1/2	3UC08SW	48	56	35.3
3/4	3UC12SW	56	59	51.4
1	3UC16SW	68	62	73.8
1-1/4	3UC20SW	80	71	121.4
1-1/2	3UC24SW	86	79	151.1
2	3UC32SW	105	91	248.2

Round Cap



SIZE	PART No	A	B	Kg/100
1/8	3RC02SW	19	14	3.0
1/4	3RC04SW	22	20	3.5
3/8	3RC06SW	26	20	5.3
1/2	3RC08SW	32	20	9.3
3/4	3RC12SW	38	25	11.6
1	3RC16SW	45	26	22.0
1-1/4	3RC20SW	55	30	38.1
1-1/2	3RC24SW	60	31	40.4
2	3RC32SW	75	38	72.2

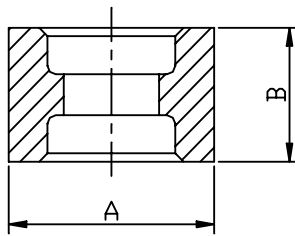
Reducing Coupling



SIZE	PART No	A	B	Kg/100
1/4 X 1/8	3RS0402SW	22	25	5.0
3/8 X 1/4	3RS0604SW	25	25	6.4
1/2 X 1/4	3RS0804SW	31	29	12.8
1/2 X 3/8	3RS0806SW	31	29	12.6
3/4 X 3/8	3RS1206SW	36	35	17.8
3/4 X 1/2	3RS1208SW	36	35	16.5
1 X 1/2	3RS1608SW	45	38	32.0
1 X 3/4	3RS1612SW	45	38	29.1
1-1/4 X 1	3RS2016SW	55	38	41.3
1-1/2 X 1	3RS2416SW	60	38	49.6
1-1/2 X 1-1/4	3RS2420SW	60	38	45.0
2 X 1-1/4	3RS3220SW	75	51	96.7
2 X 1-1/2	3RS3224SW	75	51	87.4

• Other sizes on request.

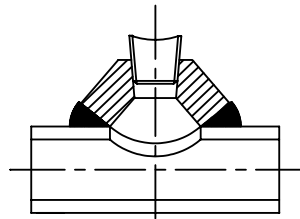
Full Coupling



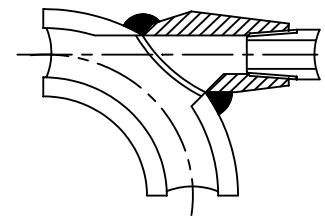
SIZE	PART No	A	B	Kg/100
1/8	3S02SW	19	25	4.0
1/4	3S04SW	22	25	5.0
3/8	3S06SW	25	25	5.3
1/2	3S08SW	31	29	10.2
3/4	3S12SW	36	35	12.5
1	3S16SW	45	38	22.7
1-1/4	3S20SW	55	38	36.8
1-1/2	3S24SW	60	38	44.4
2	3S32SW	75	51	68.8

Outlet Fittings

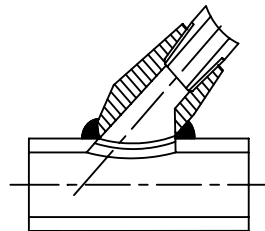
Straight Outlet



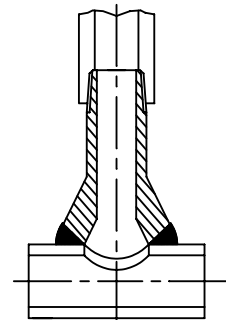
Elbow Outlet



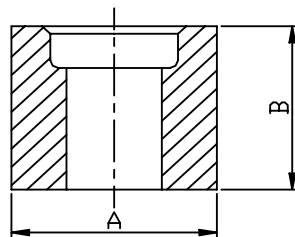
Lateral Outlet



Nipple Outlet



Half Coupling

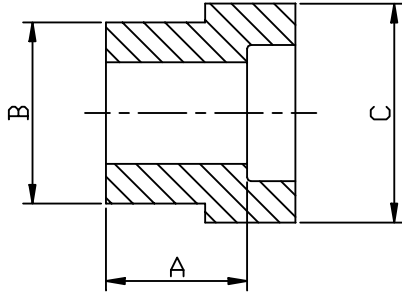


SIZE	PART No	A	B	Kg/100
1/8	3HS02SW	19	25	4.5
1/4	3HS04SW	22	25	5.5
3/8	3HS06SW	25	25	6.6
1/2	3HS08SW	32	32	13.8
3/4	3HS12SW	38	37	16.6
1	3HS16SW	48	41	30.2
1-1/4	3HS20SW	57	43	47.2
1-1/2	3HS24SW	64	45	58.3
2	3HS32SW	76	57	94.2

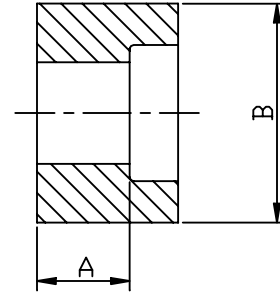
The above are available in socket weld, butt weld and threaded versions.

When enquiring please state the type and size of the outlet you require and the size of the pipe you are connecting to.

Reducing Inserts



TYPE 1



TYPE 2

PART No	TYPE	SIZE	A	B	C	Kg/100
3RI0402SW	1	1/4 X 1/8	23.9	14.0	19.1	4
3RI0602SW	2	3/8 X 1/8	15.8	17.5		5
3RI0604SW	1	3/8 X 1/4	23.9	17.5	22.1	5
3RI0804SW	2	1/2 X 1/4	15.8	21.6	-	10
3RI0806SW	1	1/2 X 3/8	23.9	21.6	28.6	10
3RI1206SW	2	3/4 X 3/8	20.6	26.9		12
3RI1208SW	1	3/4 X 1/2	28.6	26.9	31.8	12
3RI1608SW	2	1 X 1/2	20.6	33.7	-	16
3RI1612SW	1	1 X 3/4	28.6	33.7	38.1	16
3RI2012SW	2	1-1/4 X 3/4	20.6		42.4	35
3RI2016SW	1	1-1/4 X 1	28.6	42.4	47.6	35
3RI2412SW	2	1-1/2 X 3/4	20.6	48.5		45
3RI2416SW	2	1-1/2 X 1	20.6	48.5	-	45
3RI2420SW	1	1-1/2 X 1-1/4	30.2	48.5	57.2	45
3RI3216SW	2	2 X 1	22.0	61.0	-	70
3RI3220SW	2	2 X 1-1/4	21.0	61.0	-	70
3RI3224SW	1	2 X 1-1/2	32.0	61.0	61.6	70

* AVAILABLE TO ORDER.

OTHER SIZES ON REQUEST.