

**FLANGES****PRODUCT INFORMATION**

\* 316 stainless steel (other grades available) \* To BS4504 & DIN standards

\* Sizes 1/2" to 6" (DN15 to DN150)

\* To ANSI/ASME B16.5 standards

\* Larger sizes available

\* PN16 & ASA150 LB rated

\* Higher pressures available

\* To BS10 table E standards

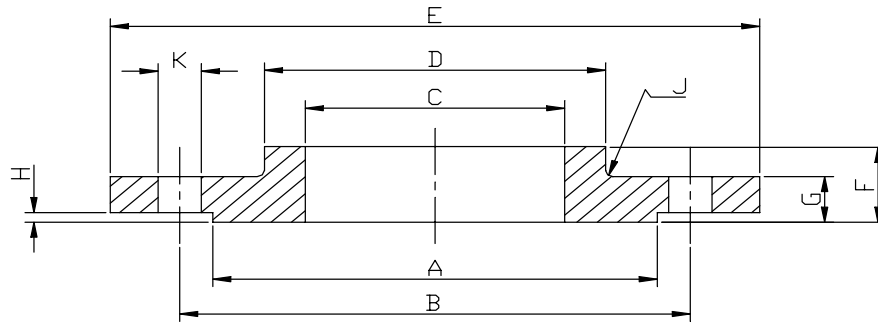
\* Dimensions in mm

\* Weights in Kg each.

**INDEX**

DESCRIPTION	PAGE	DESCRIPTION	PAGE
150 LB Slip-on	9.2	PN16/8 Blind	9.5
150 LB weld neck	9.2	PN16/4 threaded	9.5
150LB blind	9.3	BS10 Table E Slip-on	9.6
150 LB threaded	9.3	BS10 Table E Blind	9.6
PN16/3 Slip-on	9.4	BS10 Table E Threaded	9.6
PN16/2 Weld neck	9.4		

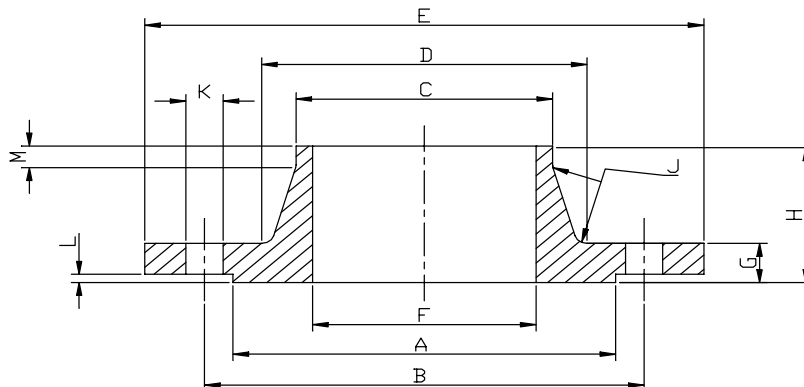
### 150 LB Slip-on



PIPE SIZE	PART No	A	B	C**	D	E	F	G	H	J	K	Kg Each
1/2	F150S0.5	34.9	60.3	22.3	30.2	88.9	15.9	11.1	1.6	3	4 X 15.9	0.4
3/4	F150S0.75	42.9	69.8	27.7	38.1	98.4	15.9	12.7	1.6	3	4 X 15.9	0.7
1	F150S1.0	50.8	79.4	34.5	49.2	107.9	17.5	14.3	1.6	3	4 X 15.9	0.8
1-1/4	F150S1.25	63.5	88.9	43.2	58.7	117.5	20.6	15.9	1.6	3	4 X 15.9	1.1
1-1/2	F150S1.5	73.0	98.4	49.5	65.1	127.0	22.2	17.5	1.6	3	4 X 15.9	1.4
2	F150S2.0	92.1	120.6	62.0	77.8	152.4	25.4	19.0	1.6	3	4 X 19.0	2.2
2-1/2	F150S2.5	104.8	139.7	74.7	90.5	177.8	28.6	22.2	1.6	3	4 X 19.0	3.6
3	F150S3.0	127.0	152.4	90.7	107.9	190.5	30.2	23.8	1.6	3	4 X 19.0	4.1
4	F150S4.0	157.2	190.5	116.1	134.9	228.6	33.3	23.8	1.6	3	8 X 19.0	5.6
5	F150S5.0	185.7	215.9	143.8	163.5	254.0	36.5	23.8	1.6	6.5	8 X 22.2	6.3
6	F150S6.0	215.9	241.3	170.7	192.1	279.4	39.7	25.4	1.6	6.5	8 X 22.2	7.5

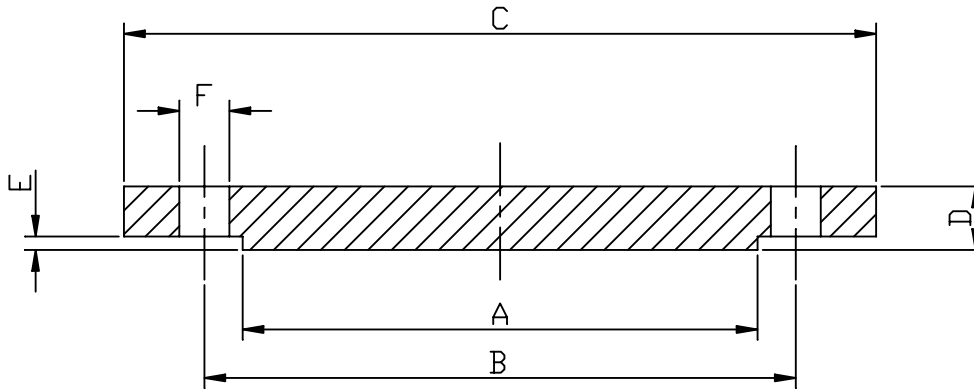
\*\* CAN BE SUPPLIED TO SUIT O.D. TUBE. SIZES

### 150 LB Weld Neck



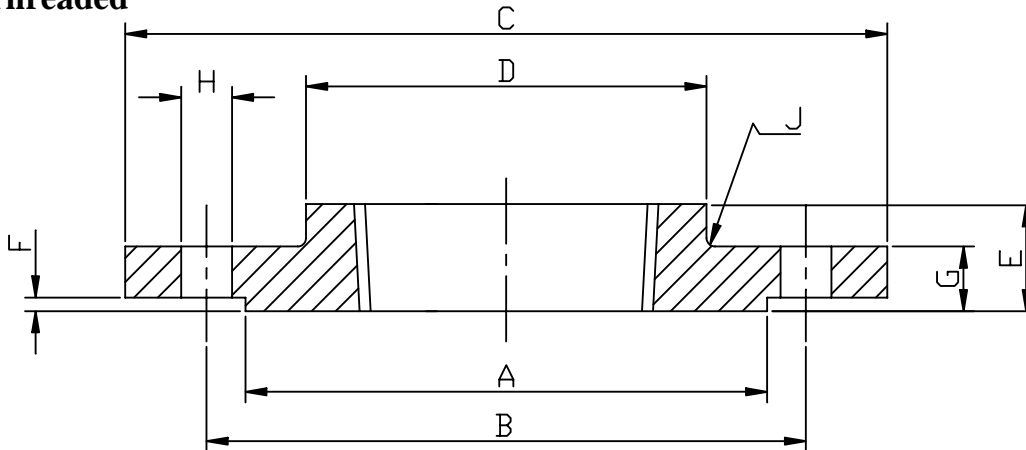
PIPE SIZE	PART No	A	B	C	D	E	F	G	H	J	K	L	M MIN.	Kg Each
1/2	F150WN0.5	34.9	60.3	21.3	30.2	88.9	SCH 40S AS STANDARD. OTHER SIZES AVAILABLE	11.1	47.6	3	4 X 15.9	1.6	6.4	0.5
3/4	F150WN0.75	42.9	69.8	26.7	38.1	98.4		12.7	52.4	3	4 X 15.9	1.6	6.4	0.7
1	F150WN1.0	50.8	79.4	33.5	49.2	107.9		14.3	55.6	3	4 X 15.9	1.6	6.4	1.1
1-1/4	F150WN1.25	63.5	88.9	42.2	58.7	117.5		15.9	57.1	3	4 X 15.9	1.6	6.4	1.5
1-1/2	F150WN1.5	73.0	98.4	48.3	65.1	127.0		17.5	61.9	3	4 X 15.9	1.6	6.4	1.8
2	F150WN2.0	92.1	120.6	60.4	77.8	152.4		19.0	63.5	3	4 X 19.0	1.6	6.4	2.7
2-1/2	F150WN2.5	104.8	139.7	73.1	90.5	177.8		22.2	69.8	3	4 X 19.0	1.6	6.4	4.4
3	F150WN3.0	127.0	152.4	88.9	107.9	190.5		23.8	69.8	3	4 X 19.0	1.6	6.4	5.2
4	F150WN4.0	157.2	190.5	114.3	134.9	228.6		23.8	76.2	3	8 X 19.0	1.6	6.4	7.5
5	F150WN5.0	185.7	215.9	141.2	163.5	254.0		23.8	88.9	6.5	8 X 22.2	1.6	6.4	9.2
6	F150WN6.0	215.9	241.3	168.4	192.1	279.4	25.4	88.9	6.5	8 X 22.2	1.6	6.4	11.0	

### 150 LB Blind



PIPE SIZE	PART No	A	B	C	D	E	F	Kg Each
1/2	F150B0.5	34.9	60.3	88.9	11.1	1.6	4 X 15.9	0.4
3/4	F150B0.75	42.9	69.8	98.4	12.7	1.6	4 X 15.9	0.7
1	F150B1.0	50.8	79.4	107.9	14.3	1.6	4 X 15.9	0.9
1-1/4	F150B1.25	63.5	88.9	117.5	15.9	1.6	4 X 15.9	1.3
1-1/2	F150B1.5	73.0	98.4	127.0	17.5	1.6	4 X 15.9	1.6
2	F150B2.0	92.1	120.6	152.4	19.0	1.6	4 X 19.0	2.6
2-1/2	F150B2.5	104.8	139.7	177.8	22.2	1.6	4 X 19.0	4.1
3	F150B3.0	127.0	152.4	190.5	23.8	1.6	4 X 19.0	5.0
4	F150B4.0	157.2	190.5	228.6	23.8	1.6	8 X 19.0	7.1
5	F150B5.0	185.7	215.9	254.0	23.8	1.6	8 X 22.2	9.0
6	F150B6.0	215.9	241.3	279.4	25.4	1.6	8 X 22.2	11.8

### 150 LB Threaded

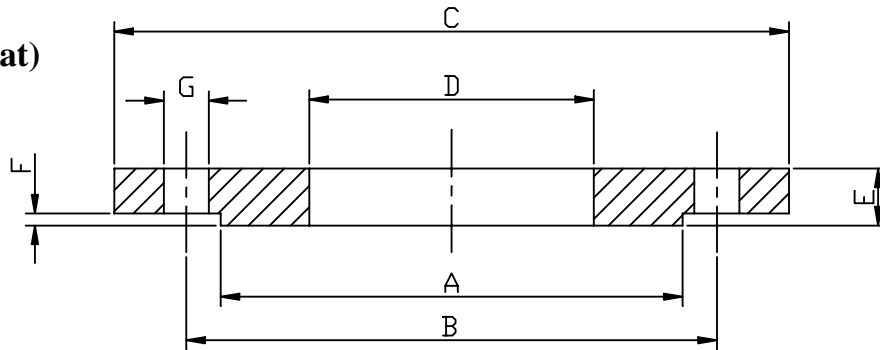


PIPE SIZE	PART No	A	B	C	D	E	F	G	H	J	Kg Each
1/2	F150SP0.5	34.9	60.3	88.9	30.2	15.9	1.6	11.1	4 X 15.9	3	0.4
3/4	F150SP.75	42.9	69.8	98.4	38.1	15.9	1.6	12.7	4 X 15.9	3	0.7
1	F150SP1.0	50.8	79.4	107.9	49.2	17.5	1.6	14.3	4 X 15.9	3	0.9
1-1/4	F150SP1.25	63.5	88.9	117.5	58.7	20.6	1.6	15.9	4 X 15.9	3	1.2
1-1/2	F150SP1.5	73.0	98.4	127.0	65.1	22.2	1.6	17.5	4 X 15.9	3	1.5
2	F150SP2.0	92.1	120.6	152.4	77.8	25.4	1.6	19.0	4 X 19.0	3	2.3
2-1/2	F150SP2.5	104.8	139.7	177.8	90.5	28.6	1.6	22.2	4 X 19.0	3	3.7
3	F150SP3.0	127.0	152.4	190.5	107.9	30.2	1.6	23.8	4 X 19.0	3	4.2
4	F150SP4.0	157.2	190.5	228.6	134.9	33.3	1.6	23.8	8 X 19.0	3	5.9

BSPP THREADED AS STANDARD. BSPT OR NPT AVAILABLE.

Various other flanges are available to ASNI standards such as lap-joint and socket weld. There are also larger sizes and higher pressure ratings. Please contact us if you require anything not shown.

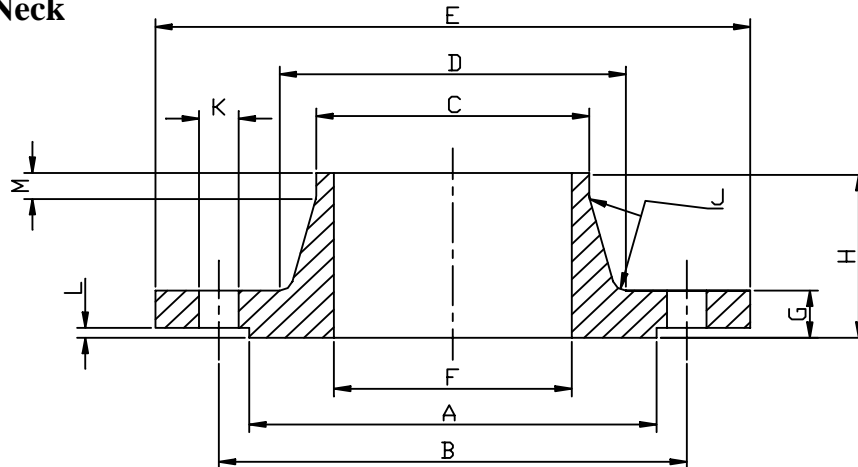
**PN16/3 Slip-on  
Code 101  
DIN 2576 (Flat)**



PIPE SIZE	DN	PART No	A	B	C	D**	E	F	G	BOLTS	Kg Each
1/2	15	F1630.5	40	65	95	22.0	14	3	14	4 X M12	0.68
3/4	20	F1630.75	50	75	105	27.5	16	3	14	4 X M12	0.94
1	25	F1631.0	60	85	115	34.5	16	3	14	4 X M12	1.11
1-1/4	32	F1631.25	70	100	150	43.5	16	3	18	4 X M16	1.62
1-1/2	40	F1631.5	80	110	150	49.5	16	3	18	4 X M16	1.86
2	50	F1632.0	102	125	165	61.5	18	3	18	4 X M16	2.47
2-1/2	65	F1632.5	110	145	185	77.5	18	3	18	4 X M16	3.00
3	80	F1633.0	128	160	200	90.5	20	3	18	8 X M16	3.79
4	100	F1634.0	148	180	220	116.0	20	3	18	8 X M16	4.03
5	125	F1635.0	178	210	250	141.5	22	3	18	8 X M16	5.46
6	150	F1636.0	202	240	285	170.5	22	3	22	8 X M20	6.57

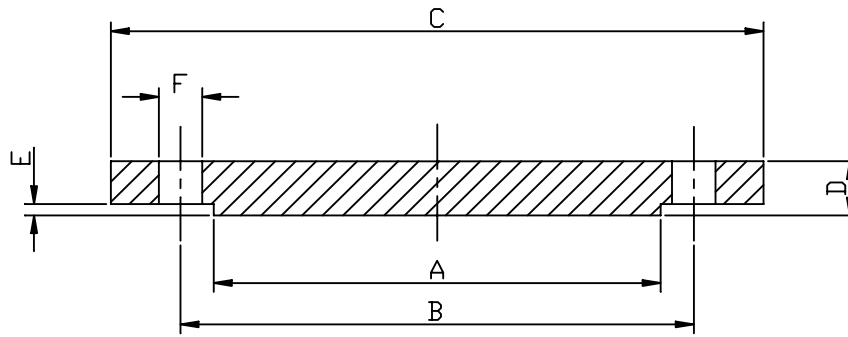
\*\* CAN BE SUPPLIED TO SUIT O.D. TUBE SIZES.

**PN16/2 Weld Neck  
Code 111  
DIN 2633**



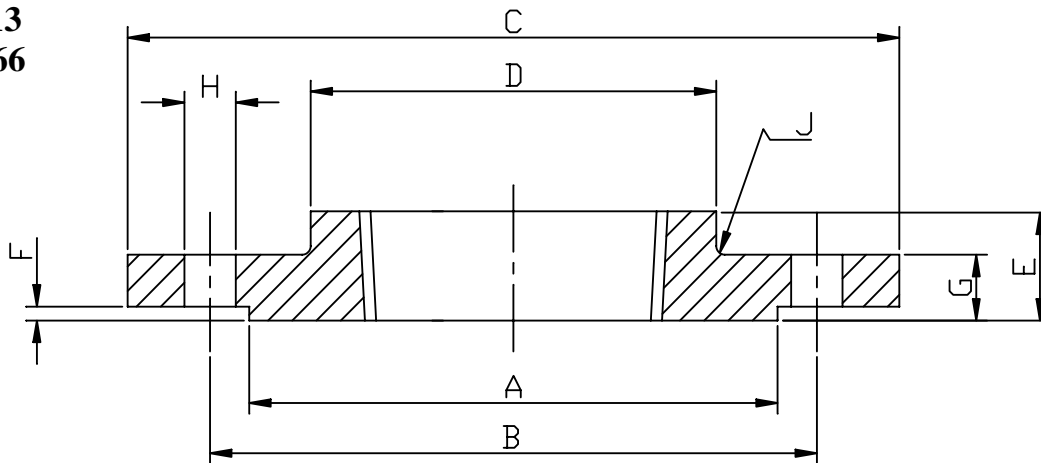
PIPE SIZE	DN	PART No	A	B	C	D	E	F	G	H	J	K	L	M	BOLTS	Kg Each
1/2	15	F1620.5	40	65	21.3	32	95	17.3	14	35	3	14	3	6	4 X M12	0.65
3/4	20	F1620.75	50	75	26.9	39	105	22.3	16	38	4	14	3	6	4 X M12	0.95
1	25	F1621.0	60	85	33.7	46	115	28.5	16	38	4	14	3	6	4 X M12	1.14
1-1/4	32	F1621.25	70	100	42.4	56	150	36.6	16	40	5	18	3	6	4 X M16	1.69
1-1/2	40	F1621.5	80	110	48.3	64	150	43.1	16	42	5	18	3	7	4 X M16	1.86
2	50	F1622.0	102	125	60.3	74	165	54.5	18	45	5	18	3	8	4 X M16	2.53
2-1/2	65	F1622.5	110	145	76.1	92	185	70.3	18	45	6	18	3	10	4 X M16	3.06
3	80	F1623.0	128	160	88.9	110	200	82.5	20	50	6	18	3	10	8 X M16	3.70
4	100	F1624.0	148	180	114.3	130	220	107.1	20	52	6	18	3	12	8 X M16	4.62
5	125	F1625.0	178	210	139.7	158	250	131.7	22	55	6	18	3	12	8 X M16	6.30
6	150	F1626.0	202	240	168.3	184	285	159.3	22	55	8	22	3	12	8 X M20	7.75

**PN16/8 Blank**  
**Code 105**  
**DIN 2527**



PIPE SIZE	DN	PART No	A	B	C	D	E	F	BOLTS	Kg Each
1/2	15	<b>F1680.5</b>	40	65	95	14	3	14	4 X M12	0.72
3/4	20	<b>F1680.75</b>	50	75	105	16	3	14	4 X M12	1.01
1	25	<b>F1681.0</b>	60	85	115	16	3	14	4 X M12	1.23
1-1/4	32	<b>F1681.25</b>	70	100	150	16	3	18	4 X M16	1.80
1-1/2	40	<b>F1681.5</b>	80	110	150	16	3	18	4 X M16	2.09
2	50	<b>F1682.0</b>	102	125	165	18	3	18	4 X M16	2.88
2-1/2	65	<b>F1682.5</b>	110	145	185	18	3	18	4 X M16	3.66
3	80	<b>F1683.0</b>	128	160	200	20	3	18	8 X M16	4.77
4	100	<b>F1684.0</b>	148	180	220	20	3	18	8 X M16	5.65
5	125	<b>F1685.0</b>	178	210	250	22	3	18	8 X M16	8.42
6	150	<b>F1686.0</b>	202	240	285	22	3	22	8 X M20	10.4

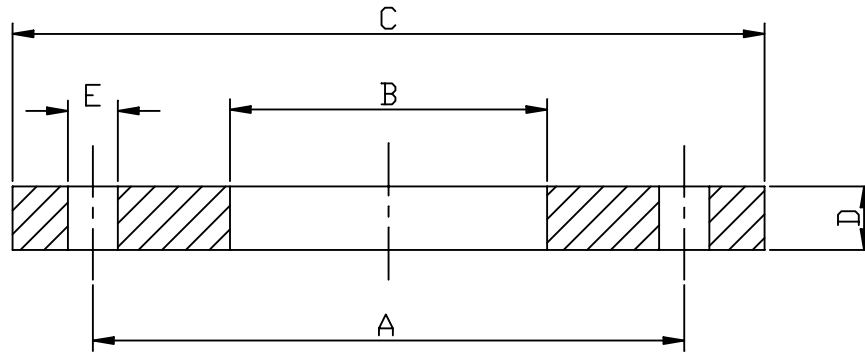
**PN16/4 Threaded**  
**Code 113**  
**DIN 2566**



PIPE SIZE	DN	PART No	A	B	C	D	E	F	G	H	J	BOLTS	Kg Each
1/2	15	<b>F1640.5</b>	40	65	95	32	20	3	14	14	3	4 X M12	0.61
3/4	20	<b>F1640.75</b>	50	75	105	40	24	3	16	14	4	4 X M12	0.91
1	25	<b>F1641.0</b>	60	85	115	50	24	3	16	14	4	4 X M12	1.10
1-1/4	32	<b>F1641.25</b>	70	100	150	60	26	3	16	18	5	4 X M16	1.60
1-1/2	40	<b>F1641.5</b>	80	110	150	70	26	3	16	18	5	4 X M16	1.78
2	50	<b>F1642.0</b>	102	125	165	84	28	3	18	18	5	4 X M16	2.43
2-1/2	65	<b>F1642.5</b>	110	145	185	104	32	3	18	18	6	4 X M16	3.18
3	80	<b>F1643.0</b>	128	160	200	120	34	3	20	18	6	8 X M16	4.12
4	100	<b>F1644.0</b>	148	180	220	142	40	3	20	18	6	8 X M16	4.47

**BSPP THREADED AS STANDARD. BSPT OR NPT AVAILABLE.**

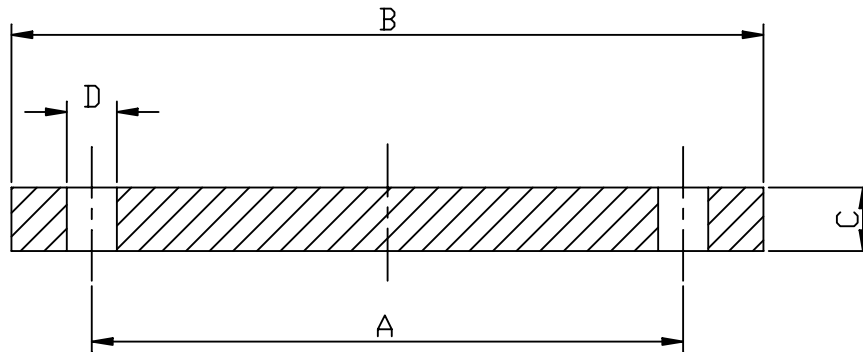
**Table E slip-on**



PIPE SIZE	PART No	A	B**	C	D	E	BOLTS	Kg Each
1/2	FES0.5	66.68	22.35	95.25	6.35	14.29	4 X M12	0.34
3/4	FES0.75	73.03	27.69	101.6	6.35	14.29	4 X M12	0.36
1	FES1.0	82.55	34.54	114.30	7.14	14.29	4 X M12	0.50
1-1/4	FES1.25	87.31	43.18	120.65	7.94	14.29	4 X M12	0.64
1-1/2	FES1.5	98.43	49.53	133.35	8.73	14.29	4 X M12	1.00
2	FES2.0	114.3	61.98	152.40	9.53	17.46	4 X M16	1.14
2-1/2	FES2.5	127.00	74.68	165.10	10.32	17.46	4 X M16	1.44
3	FES3.0	146.05	90.68	184.15	11.11	17.46	4 X M16	1.84
4	FES4.0	177.80	116.08	215.90	12.70	17.46	8 X M16	2.53
5	FES5.0	209.55	143.76	254.00	14.29	17.46	8 X M16	3.00
6	FES6.0	234.95	170.69	279.40	17.46	22.23	8 X M20	4.00

\*\* CAN BE SUPPLIED TO SUIT O.D. TUBE SIZES.

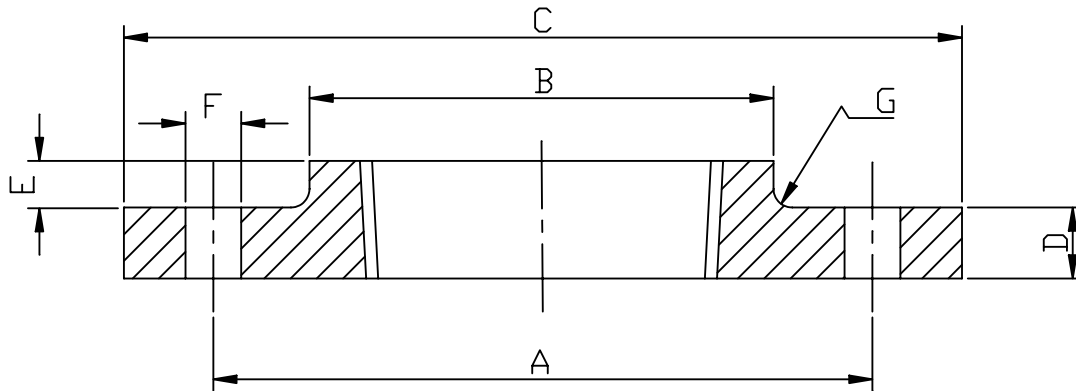
**Table E blind**



PIPE SIZE	PART No	A	B	C	D	BOLTS	Kg Each
1/2	FEB0.5	66.68	95.25	6.35	14.29	4 X M12	0.62
3/4	FEB0.75	73.03	101.6	6.35	14.29	4 X M12	0.98
1	FEB1.0	82.55	114.30	7.14	14.29	4 X M12	1.07
1-1/4	FEB1.25	87.31	120.65	7.94	14.29	4 X M12	1.52
1-1/2	FEB1.5	98.43	133.35	8.73	14.29	4 X M12	1.79
2	FEB2.0	114.3	152.40	9.53	17.46	4 X M16	2.31
2-1/2	FEB2.5	127.00	165.10	10.32	17.46	4 X M16	3.03
3	FEB3.0	146.05	184.15	11.11	17.46	4 X M16	3.60
4	FEB4.0	177.80	215.90	12.70	17.46	8 X M16	3.83
5	FEB5.0	209.55	254.00	14.29	17.46	8 X M16	4.50
6	FEB6.0	234.95	279.40	17.46	22.23	8 X M20	5.50

OTHER TABLES AVAILABLE

**Table E threaded**



PIPE SIZE	PART No	A	B	C	D	E	F	G	BOLTS	Kg Each
1/2	FESP0.5	66.68	33.34	95.25	6.35	9.53	14.29	1.6	4 X M12	0.40
3/4	FESP0.75	73.03	38.10	101.6	6.35	11.11	14.29	1.6	4 X M12	0.59
1	FESP1.0	82.55	47.63	114.30	7.14	9.53	14.29	1.6	4 X M12	0.70
1-1/4	FESP1.25	87.31	55.56	120.65	7.94	11.11	14.29	1.6	4 X M12	0.79
1-1/2	FESP1.5	98.43	61.91	133.35	8.73	12.70	14.29	1.6	4 X M12	1.08
2	FESP2.0	114.3	74.61	152.40	9.53	12.70	17.46	1.6	4 X M16	1.41
2-1/2	FESP2.5	127.00	90.49	165.10	10.32	15.88	17.46	1.6	4 X M16	1.82
3	FESP3.0	146.05	106.36	184.15	11.11	15.88	17.46	1.6	4 X M16	2.48
4	FESP4.0	177.80	133.35	215.90	12.70	19.01	17.46	3.2	8 X M16	3.45

**BSPP THREADED AS STANDARD. BSPT OR NPT AVAILABLE.**

### STUDBOLT DIMENSIONS FOR FLANGES

SIZE	TABLE E	PN16	ASA150
1/2	4 X M12 X 35	4 X M12 X 50	4 X M12 X 45
3/4	4 X M12 X 35	4 X M12 X 55	4 X M12 X 50
1	4 X M12 X 35	4 X M12 X 55	4 X M12 X 50
1-1/4	4 X M12 X 40	4 X M16 X 60	4 X M12 X 55
1-1/2	4 X M12 X 40	4 X M16 X 60	4 X M12 X 60
2	4 X M16 X 45	4 X M16 X 65	4 X M16 X 65
2-1/2	4 X M16 X 45	4 X M16 X 65	4 X M16 X 70
3	4 X M16 X 50	8 X M16 X 65	4 X M16 X 75
4	8 X M16 X 50	8 X M16 X 65	8 X M16 X 75
5	8 X M16 X 55	8 X M16 X 70	8 X M20 X 80
6	8 X M20 X 65	8 X M20 X 75	8 X M20 X 80