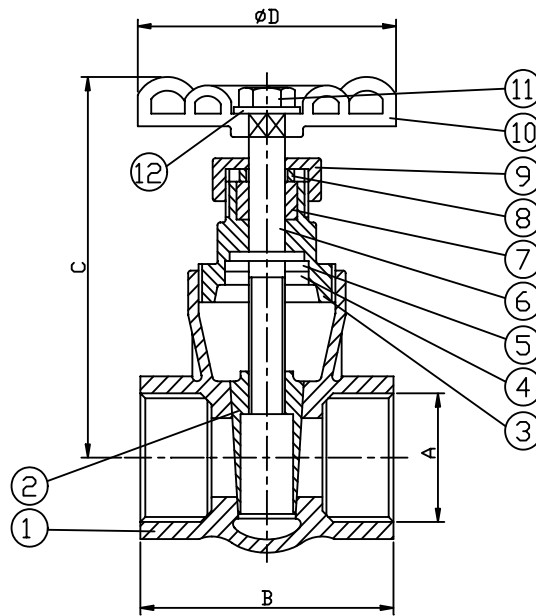


OTHER VALVES**PRODUCT INFORMATION**

- * 316 stainless steel
- * BSPP threaded as standard
- * Larger sizes available
- * Dimensions in mm
- * Pressures to 400 bar (6000 psi)
- * NPT and BSPT threads available
- * Higher pressures available
- * Weights in Kg each.

INDEX

DESCRIPTION	PAGE	DESCRIPTION	PAGE
Gate valve 200psi	8.2	Pressure relief valve 350psi	8.6
Globe valve 200psi	8.3	Piston check valve 6000psi	8.7
Swing check valve 200psi	8.4	Piston check valve 450 psi	8.8
Y-strainer 800psi	8.5	Needle valve 6000psi	8.9

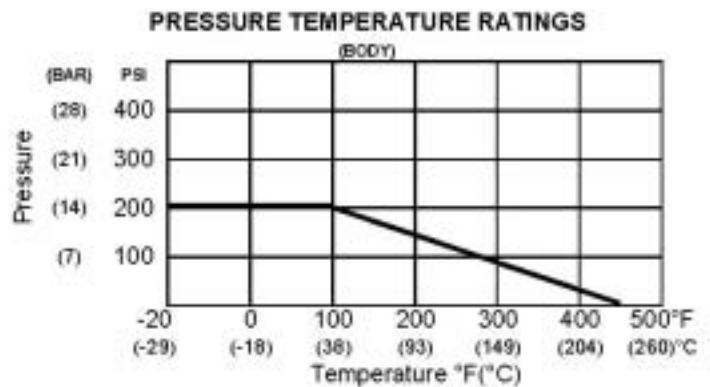


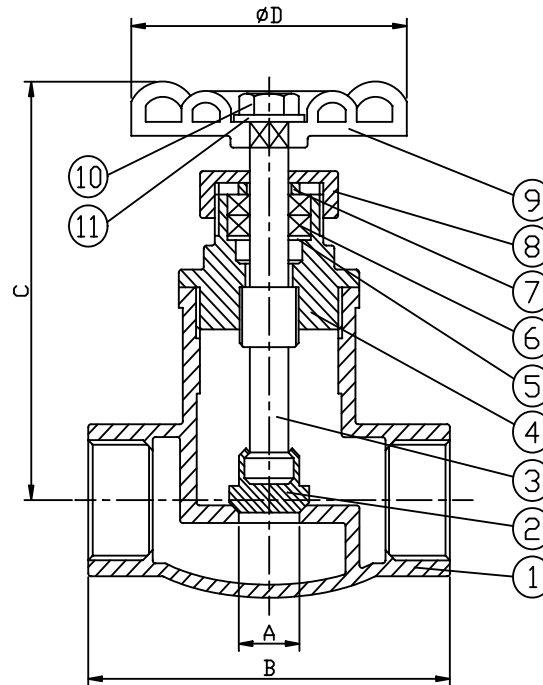
Specifications:

- * 3/8" - 3" (DN10 - DN80)
- * 200 psi (14 BAR) pressure
- * Temperature: -20F to 450F (-29C to 232C)
- * Non-rising stem
- * Investment cast body & bonnet
- * BSPP threaded. (NPT, BSPT available)
- * 316 stainless steel
- * For chemical and industrial applications
- * Solid wedge disc
- * Steam rating 150 psi

SIZE	PART No	A	B	C OPEN	D	Cv Fact.	Kg Each
3/8	GV06	12	54	93	60	16	0.30
1/2	GV08	16	54	93	70	19	0.42
3/4	GV12	20	58	103	70	37	0.56
1	GV16	26	65	112	70	64	0.75
1-1/4	GV20	32	74	125	80	103	1.00
1-1/2	GV24	40	78	145	90	143	1.50
2	GV32	50	87	170	100	360	1.95
2-1/2	GV40	65	116	220	120	440	4.60
3	GV48	80	131	240	120	520	7.80

No	PART	MATERIAL	QTY
1	BODY	SS316/CF8M	1
2	DISC	SS316/CF8M	1
3	BONNET	SS316/CF8M	1
4	STOP RING	SS304	1
5	STEM HOLDER	SS316	1
6	STEM	SS316	1
7	GLAND PACKING	PTFE	1
8	GLAND	SS304	1
9	GLAND NUT	SS316/CF8M	1
10	HANDWHEEL	CAST IRON	1
11	WHEEL NUT	SS304	1
12	NAME PLATE	ALUMINIUM	1



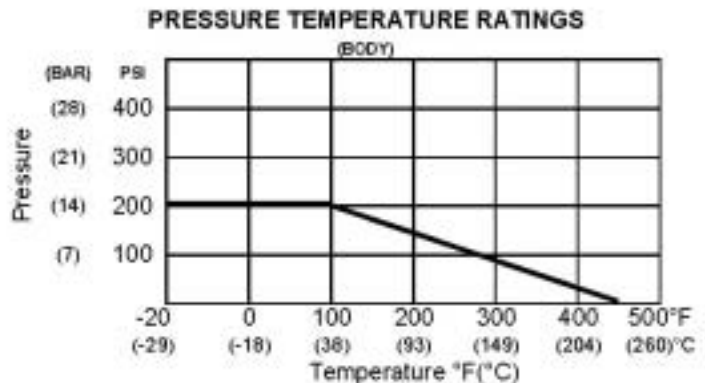


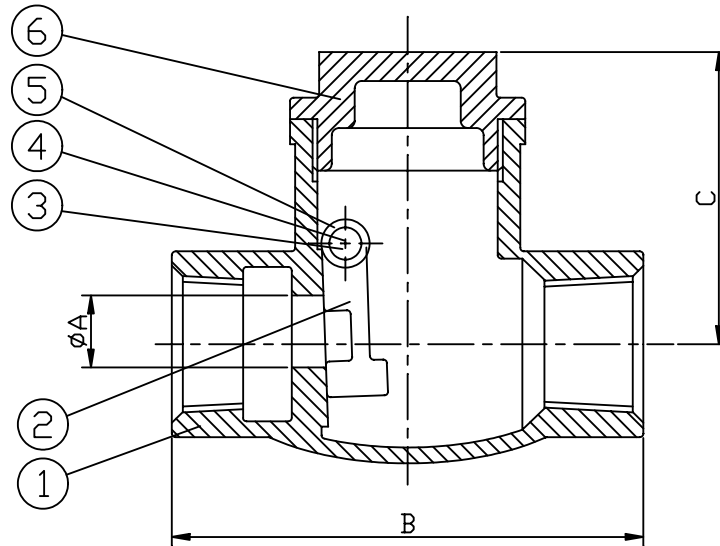
Specifications:

- * 1/4" - 2" (DN8 - DN50)
- * 200 psi (14 BAR) pressure
- * Temperature: -20F to 450F (-29C to 232C)
- * Rising stem & wheel
- * Investment cast body & bonnet
- * Rising stem and wheel
- * BSPP threaded. (NPT, BSPT available)
- * 316 stainless steel
- * For chemical and industrial applications
- * Screwed bonnet
- * Steam rating 150psi

SIZE	PART No	A	B	C OPEN	D	Cv Factor	Kg Each
1/4	GLV04	10	52	102	60	6	0.40
3/8	GLV06	12	52	102	60	12	0.35
1/2	GLV08	15	52	102	60	19	0.35
3/4	GLV12	20	60	113	70	37	0.60
1	GLV16	25	72	123	70	64	0.80
1-1/4	GLV20	32	80	148	80	103	1.25
1-1/2	GLV24	40	90	160	90	143	1.80
2	GLV32	50	106	180	100	360	2.50

No	PART	MATERIAL	QTY
1	BODY	SS316/CF8M	1
2	DISC	SS316/CF8M	1
3	STEM	SS316	1
4	BONNET	SS316/CF8M	1
5	STEM HOLDER	SS316	1
6	GLAND PACKING	PTFE	1
7	GLAND	SS304	1
8	GLAND NUT	SS316/CF8M	1
9	HANDWHEEL	CAST IRON	1
10	WHEEL NUT	SS304	1
11	NAME PLATE	ALUMINIUM	1



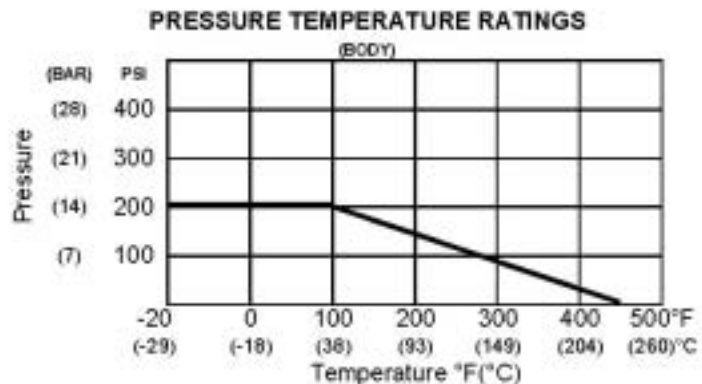


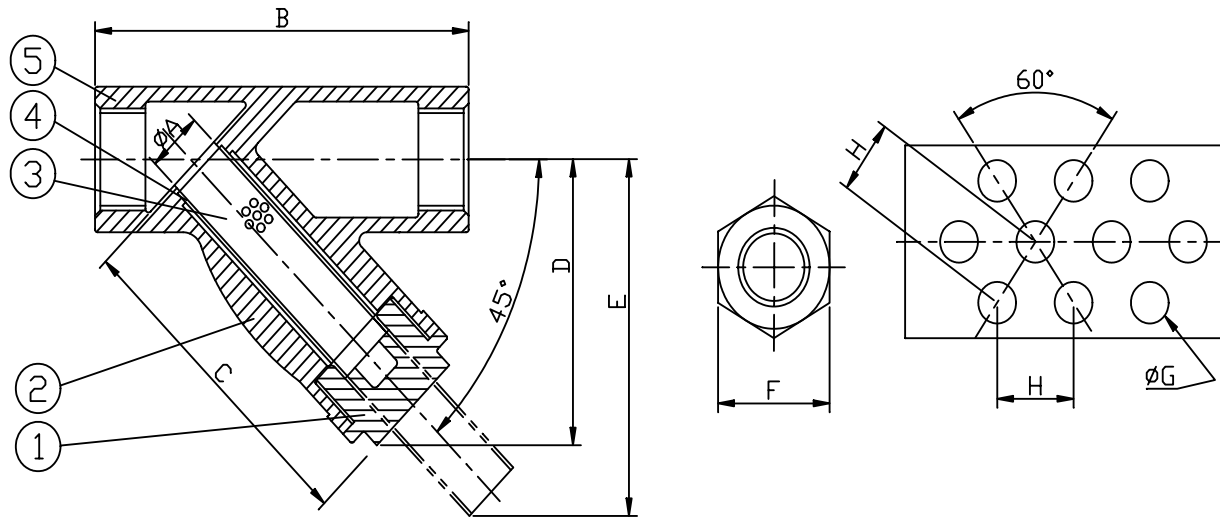
Specifications:

- * 1/4" - 3" (DN8 - DN80)
- * 200 psi (14 BAR) pressure
- * Temperature: -20F to 450F (-29C to 232C)
- * Screwed cap
- * Investment cast body & cap
- * BSPP threaded. (NPT, BSPT available)
- * 316 stainless steel
- * For chemical and industrial applications
- * Swing type disc
- * Steam rating 150psi

SIZE	PART No	A	B	C	Cv Factor	Kg Each
1/4	SCV04	10	65	45	6	0.15
3/8	SCV06	12	65	45	12	0.20
1/2	SCV08	15	65	45	30	0.30
3/4	SCV12	20	80	55	37	0.50
1	SCV16	25	90	58	54	0.70
1-1/4	SCV20	32	105	62	103	1.05
1-1/2	SCV24	40	120	75	143	1.60
2	SCV32	50	140	78	360	2.25
2-1/2	SCV40	65	159	90	440	2.85
3	SCV48	80	190	104	520	3.00

No	PART	MATERIAL	QTY
1	BODY	SS316/CF8M	1
2	DISC	SS316/CF8M	1
3	PLUG	SS316	1
4	HINGE PIN	SS316	1
5	GASKET	PTFE	1
6	CAP	SS316/CF8M	1





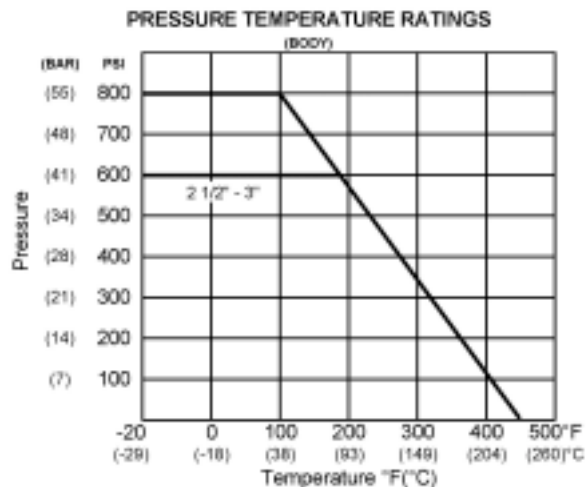
Specifications:

- * 1/4" - 3" (DN8 - DN80)
- * 800 psi (55 BAR) pressure
- * Temperature: -20F to 450F (-29C to 232C)
- * Screwed cap
- * Investment cast body & cap

- * BSPP threaded. (NPT, BSPT available)
- * 316 stainless steel
- * For chemical and industrial applications
- * SS316 screen

SIZE	PART No	A	B	C	D	E	F	G	H	Cv Factor	Kg Each
1/4	YS04	10	57	35	35	45	22	1	2	6	0.15
3/8	YS06	10	57	35	35	45	22	1	2	12	0.20
1/2	YS08	15	60	38	38	51	27	1	2	19	0.20
3/4	YS12	20	69	42	42	55	33	1	2	37	0.30
1	YS16	25	85	50	50	66	41	1	2	64	0.45
1-1/4	YS20	32	99	55	55	73	47	1	2	103	0.66
1-1/2	YS24	38	111	59	59	80	54	1	2	143	0.90
2	YS32	51	137	73	73	100	67	1	2	360	1.45
2-1/2	YS40	65	172	91	91	153	82	1	2	440	2.00
3	YS48	80	205	110	110	173	100	1	2	520	3.00

No	PART	MATERIAL	QTY
1	PLUG	SS316/CF8M	1
2	GASKET	PTFE	1
3	SCREEN	SS316/CF8M	1
4	CAP	SS316	1
5	BODY	SS316/CF8M	1

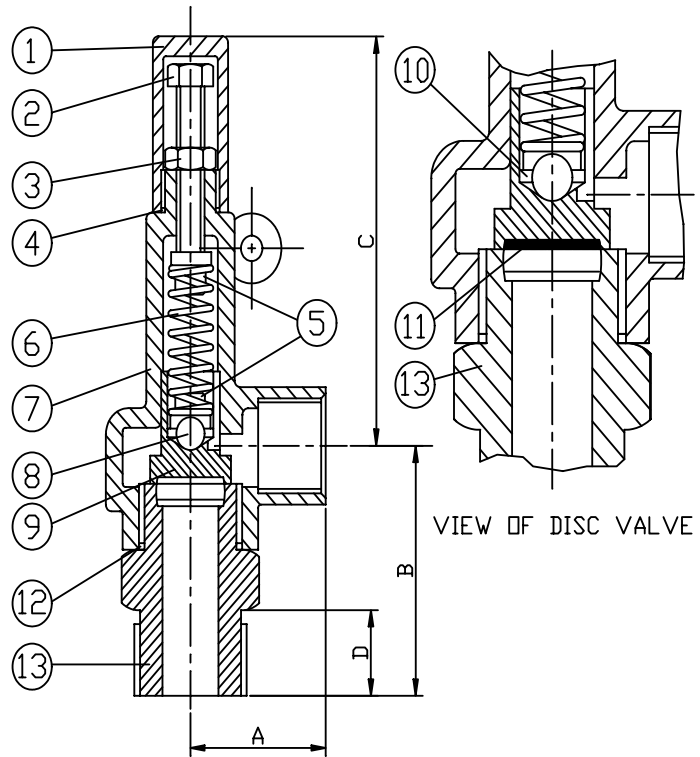


Specifications:

- 1/2" - 2" (DN15 - DN50)
- BSPP threaded. (NPT, BSPT available)
- 350 psi (24 BAR) pressure
- 316 stainless steel
- Metal to metal precision lapped seats
- Soft seats available, e.g nitrile, butyl, PTFE

SIZE IN/OUT	PART No	A	B	C	D	Kg
1/2 (15MM)	RV180S08	28	45	77	15	0.3
3/4 (20MM)	RV180S12	34	48	82	15	0.5
1 (25MM)	RV180S16	38	59	101	19	1.0
1-1/4 (32MM)	RV180S20	47	68	103	23	1.4
1-1/2 (40MM)	RV180S24	52	80	117	24	2.4
2 (50MM)	RV180S32	62	92	122	28	3.0

No	PART	MATERIAL
1	CAP	SS316
2	ADJUSTING SCREW	SS316
3	LOCKNUT	SS316
4	'O' RING	NITRILE
5	SPRING CARRIER	SS316
6	SPRING	SS302
7	BODY	SS316
8	BALL	SS316
9	VALVE LID	SS316
10	DISC HOLDER	SS316
11	DISC	VITON
12	'O' RING	NITRILE
13	NOZZLE	SS316



Saturated Steam discharge capacities in Kgs per hour

SET PRESSURE BAR	SIZE					
	1/2	3/4	1	1-1/4	1-1/2	2
0.7	10	23	42	65	94	166
1	13	29	52	81	118	208
2	19	45	78	123	177	297
3	26	59	103	164	234	415
4	31	71	129	200	293	512
6	44	102	180	282	410	716
8	53	129	229	358	500	902
10	70	157	280	440	631	1135
12	86	188	331	501	758	1338
18	123	270	482	763	1080	1900
24	160	363	641	1022	1427	2557

Water discharge capacities in litres per minute

SET PRESSURE BAR	SIZE					
	1/2	3/4	1	1-1/4	1-1/2	2
0.7	4	11	20	32	46	79
1	6	14	25	40	57	99
2	10	20	36	57	86	145
3	11	25	45	70	99	179
4	13	29	51	80	115	204
6	16	34	61	97	143	249
8	18	41	72	114	163	290
10	21	46	80	129	184	325
12	22	50	88	138	199	356
18	27	60	109	168	243	438
24	31	69	125	195	281	504

Air discharge capacities in cubic metres per hour.

SET PRESSURE BAR	SIZE					
	1/2	3/4	1	1-1/4	1-1/2	2
0.7	10	22	40	63	91	154
1	12	25	46	74	106	180
2	17	40	71	111	161	271
3	23	52	94	149	213	364
4	30	66	118	184	268	454
6	41	90	162	257	367	635
8	51	115	206	322	466	814
10	63	144	255	393	575	983
12	75	168	300	466	676	1152
18	110	244	429	702	982	1662
24	144	319	576	935	1259	2248

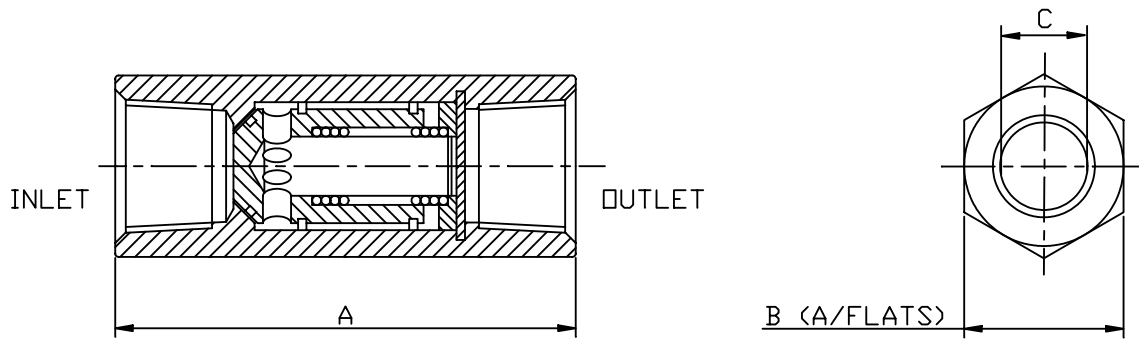
ADJUSTING SPRINGS AVAILABLE

BAR	PSI
0.35-1.79	5-25
1.8-5.50	26.80
5.51-10.34	81-150
10.35-13.79	151-200
13.80-17.24	201-250
17.25-20.69	251-300
20.70-24.0	301-350

WHEN ORDERING PLEASE STATE:

1. Set pressure or spring range.
2. Valve size or maximum capacity.
3. Medium to be discharged.
4. Maximum working temperature.
5. End connections required.

Available in larger and smaller sizes and with flanged ends.

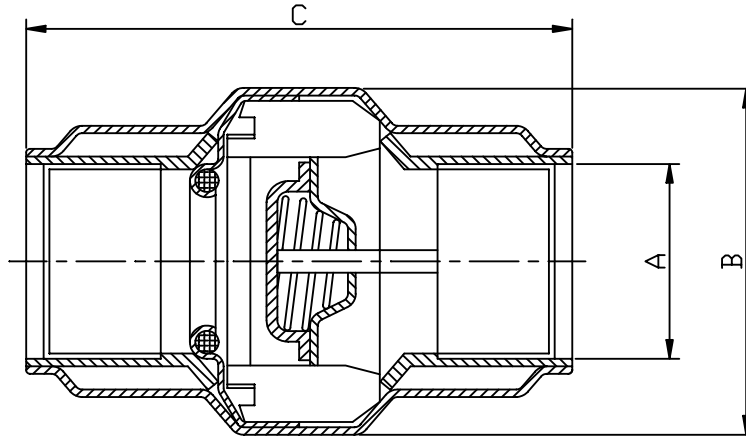


Specifications:

- * 1/4" - 1" (DN8 - DN25) * 6000 psi (400 BAR) pressure * 316 stainless steel
- * BSPP threaded. (NPT, BSPT & Compression ends available)
- * Soft seat for bubble tight closing * Low pressure differential to effect seal

SIZE	PART No	A	B	C	CRACKING PRESSURE BAR	Kg Each
1/4	PCV04	58	22	8	0.27	0.15
3/8	PCV06	93	28	10	0.27	0.52
1/2	PCV08	97	28	10	0.27	0.46
3/4	PCV12	134	43	19	0.27	2.22
1	PCV16	139	43	19	0.27	1.80

PART	MATERIAL
END CAP	SS316
BODY	SS316
BODY SEAL	PTFE
POPPET SEAL	VITON
POPPET	SS316
SPRING	SS316

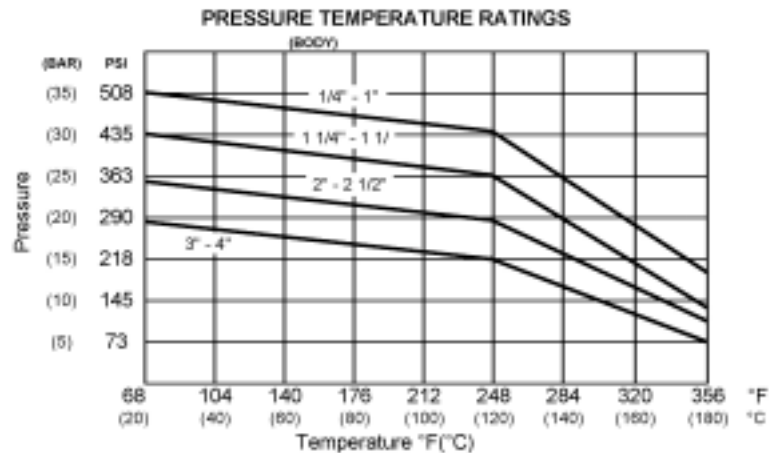


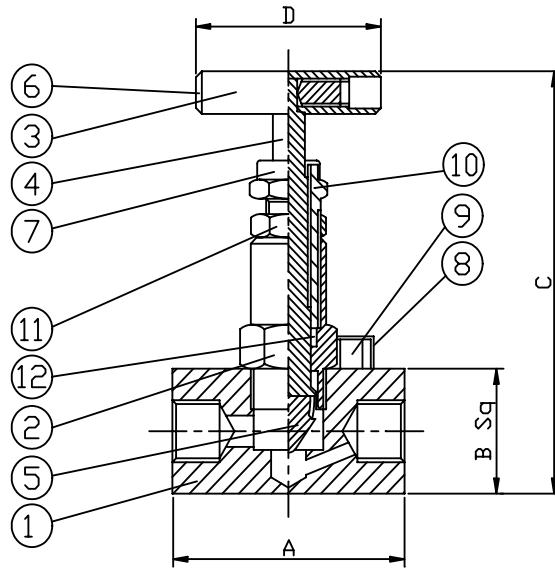
Specifications:

- * 1/4" - 4" (DN8 - DN100) * BSPP threaded. * 1/4" - 2", 0.01-30 bar at 80C
- * 2-1/2" - 4", 0.01 -16 bar at 80C * Viton seal suitable for: -20C - 150C
- * 304 stainless steel (316 available) * Low friction loss * Compact size
- * Suitable for corrosive and abrasive fluids * Other seals available

SIZE A	PART NUMBER	B	C	OPENING PRESSURE BAR	Kg Each
1/4	CRO04	38	64	0.025	0.115
3/8	CRO06	38	64	0.025	0.115
1/2	CRO08	38	64	0.025	0.115
3/4	CRO12	42	69	0.025	0.142
1	CRO16	52	77	0.025	0.197
1-1/4	CRO20	67	93	0.025	0.320
1-1/2	CRO24	77	100	0.025	0.400
2	CRO32	86	118	0.020	0.676
2-1/2	CRO40	108	130	0.015	1.075
3	CRO48	128	140	0.015	1.630
4	CRO64	163	167	0.010	2.770

PART	MATERIAL
BODY	SS304
SEAL	VITON
GUIDE BUSH	PTFE
SPRING	SS316





Specifications:

- * 1/4" - 1" (DN8 - DN25)
- * 6000 psi (400 BAR) pressure
- * Compression ends available
- * Compact size
- * Low operating torque
- * Adjustable gland packing
- * BSPP threaded (NPT, BSPT available)
- * 316 stainless steel
- * Male/female type available
- * Two piece stem with non-rotating tip.
- * Panel mounting option

SIZE	PART No	A	B	C OPEN	D	Kg Each
1/4	NV04	45	19	60	45	0.15
3/8	NV06	50	25	66	45	0.25
1/2	NV08	60	28	69	45	0.35
3/4	NV12	65	38	128	60	0.45
1	NV16	75	45	135	60	0.65

No	PART	MATERIAL
1	BODY	SS316
2	BONNET HOUSING	SS316
3	HANDLE	SS316
4	STEM	SS316
5	STEM TIP	17/4 PH
6	GRUB SCREW	SS316
7	DUST CAP	PVC
8	RETAINING CAM	SS316
9	RETAINING SCREW	SS316
10	GLAND ADJUSTER	SS316
11	LOCKNUT	SS316
12	GLAND PACKING	PTFE