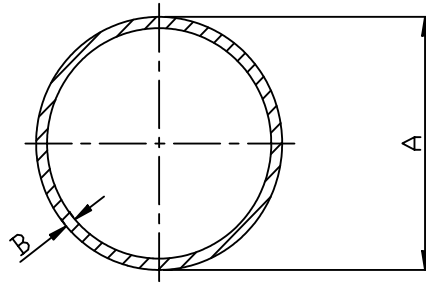


**TUBE & PIPE****PRODUCT INFORMATION**

- \* Tube to ASTM A269/A213 seamless
- \* Sizes 1/8" to 6" (DN15 to DN150)
- \* Larger sizes available
- \* Dimensions in mm
- \* 316 stainless steel
- \* Pipe to ASTM A312 welded
- \* Other grades available
- \* Weights in Kg/M

**INDEX**

DESCRIPTION	PAGE	DESCRIPTION	PAGE
Seamless tube 1/8" to 1"	10.2	Welded pipe 1/2 to 6" Sch40S	10.3
Seamless tube 4mm to 42mm	10.2	Seamless pipe 1/8" to 3/8"	10.3
Welded pipe 1/2" to 6" Sch10S	10.3	Pipe dimensions	10.4



### Imperial

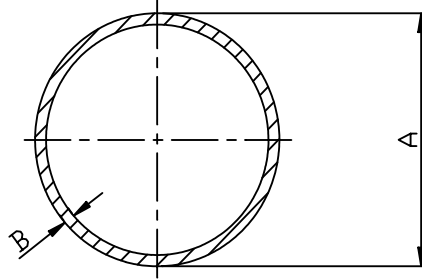
A INCHES	A MM	PART NUMBER	SWG (GAUGE)	B INCH	B MM	PRESSURE BAR -29C TO +38C	Kg/M
1/8	3.18	<b>0.12520316S</b>	20	0.036	0.914	885	0.052
3/16	4.76	<b>0.187520316S</b>	20	0.036	0.914	570	0.088
1/4	6.35	<b>0.2520316S</b>	20	0.036	0.914	410	0.124
1/4	6.35	<b>0.2518316S</b>	18	0.048	1.218	605	0.157
1/4	6.35	<b>0.2516316S</b>	16	0.064	1.625	820	0.192
3/8	9.53	<b>0.37520316S</b>	20	0.036	0.914	265	0.197
3/8	9.53	<b>0.37518316S</b>	18	0.048	1.218	385	0.253
3/8	9.53	<b>0.37516316S</b>	16	0.064	1.625	530	0.321
1/2	12.7	<b>0.520316S</b>	20	0.036	0.914	195	0.270
1/2	12.7	<b>0.518316S</b>	18	0.048	1.218	280	0.350
1/2	12.7	<b>0.516316S</b>	16	0.064	1.625	380	0.451
5/8	15.88	<b>0.62520316S</b>	20	0.036	0.914	155	0.342
5/8	15.88	<b>0.62518316S</b>	18	0.048	1.218	220	0.447
3/4	19.05	<b>0.7520316S</b>	20	0.036	0.914	130	0.415
3/4	19.05	<b>0.7518316S</b>	18	0.048	1.218	180	0.544
3/4	19.05	<b>0.7516316S</b>	16	0.064	1.625	245	0.709
1	25.4	<b>1.018316S</b>	18	0.048	1.218	135	0.738
1	25.4	<b>1.016316S</b>	16	0.064	1.625	180	0.967

### Metric

A MM	PART NUMBER	B MM	PRESSURE BAR -29C TO +38C	Kg/M
4	<b>041316S</b>	1	645	0.075
6	<b>061316S</b>	1	430	0.125
6	<b>061.5316S</b>	1.5	645	0.169
8	<b>081316S</b>	1	322	0.175
8	<b>081.5316S</b>	1.5	483	0.244
8	<b>082316S</b>	2	645	0.300
10	<b>101316S</b>	1	258	0.225
10	<b>101.5316S</b>	1.5	387	0.319
10	<b>102316S</b>	2	516	0.401
12	<b>121316S</b>	1	215	0.275
12	<b>1215316S</b>	1.5	322	0.394
12	<b>122316S</b>	2	430	0.501
14	<b>142316S</b>	2	368	0.601
15	<b>151316S</b>	1	172	0.351
15	<b>151.5316S</b>	1.5	258	0.507
15	<b>152316S</b>	2	344	0.651
16	<b>161316S</b>	1	161	0.376
16	<b>161.5316S</b>	1.5	242	0.545
16	<b>162316S</b>	2	322	0.701
18	<b>181.5316S</b>	1.5	215	0.620
18	<b>182316S</b>	2	287	0.801
20	<b>201.5316S</b>	1.5	193	0.695
20	<b>202316S</b>	2	258	0.901
22	<b>221.5316S</b>	1.5	176	0.770
22	<b>222316S</b>	2	234	1.002
25	<b>251.5316S</b>	1.5	155	0.883
25	<b>252316S</b>	2	206	1.152
28	<b>281.5316S</b>	1.5	138	0.995
28	<b>282316S</b>	2	184	1.302
30	<b>303316S</b>	3	258	2.028
35	<b>352316S</b>	2	147	1.653
38	<b>383316S</b>	3	204	2.629
42	<b>423316S</b>	3	184	2.930

Tubes are usually supplied to ASTM A269/A213. Hardness RB80 maximum. 5-7 metre random lengths. Contact us for sizes not shown.

### Nominal Bore (NB)



### Schedule 10S

NB	PART NUMBER *	A INCHES	A MM	B INCHES	B MM	Kg/M
1/2	0.5S10316W	0.840	21.34	0.083	2.11	1.02
3/4	0.75S10316W	1.050	26.67	0.083	2.11	1.30
1	1.0S10316W	1.315	33.40	0.109	2.77	2.13
1-1/4	1.25S10316W	1.660	42.16	0.109	2.77	2.73
1-1/2	1.5S10316W	1.900	48.26	0.109	2.77	3.16
2	2.0S103.6W	2.375	60.33	0.109	2.77	3.99
2-1/2	2.5S10316W	2.875	73.03	0.120	3.05	5.34
3	3.0S10316W	3.500	88.90	0.120	3.05	6.56
4	4.0S10316W	4.500	114.30	0.120	3.05	8.50
5	5.0S10316W	5.563	141.30	0.134	3.40	11.74
6	6.0S10316W	6.625	168.28	0.134	3.40	14.04

### Schedule 40S

NB	PART NUMBER *	A INCHES	A MM	B INCHES	B MM	Kg/M
1/8	0.125S40316S	0.405	10.29	0.068	1.73	0.37
1/4	0.25S40316S	0.540	13.72	0.088	2.24	0.64
3/8	0.375S40316S	0.675	17.15	0.091	2.31	0.87
1/2	0.5S40316W	0.840	21.34	0.109	2.77	1.29
3/4	0.75S40316W	1.050	26.67	0.113	2.87	1.71
1	1.0S40316W	1.315	33.40	0.133	3.38	2.54
1-1/4	1.25S40316W	1.660	42.16	0.140	3.56	3.44
1-1/2	1.5S40316W	1.900	48.26	0.145	3.68	4.11
2	2.0S403.6W	2.375	60.33	0.154	3.91	5.52
2-1/2	2.5S40316W	2.875	73.03	0.203	5.16	8.77
3	3.0S40316W	3.500	88.90	0.216	5.49	11.47
4	4.0S40316W	4.500	114.30	0.237	6.02	16.32
5	5.0S40316S	5.563	141.30	0.258	6.55	22.10
6	6.0S40316W	6.625	168.28	0.280	7.11	28.69

\* Part numbers suffix: W = welded S = seamless

The above shows standard stock items but other sizes and wall thicknesses are available. See next page for full size range.

-----  
 -  
**TO CALCULATE THE MAXIMUM WORKING PRESSURE FOR A GIVEN TUBE SIZE & QUALITY:**

$$P = 2 \times S \times T \div D$$

WHERE P = PRESSURE PSI      S = ALLOWABLE STRESS PSI

T = WALL THICKNESS IN mm      D = OUTSIDE DIAMETER IN mm

ALLOWABLE STRESS 304, 316, 321 AND 347 = 18,700 PSI

Wall thickness (mm), Wall thickness (inches), *Weight (Kg/m)*

Available in various grades in seamless and welded.

Nom Bore inch	OD mm	O.D. inch	5s	10s	10	20	30	STD 40s	40	60	XS 80s	80	100	120	140	160	XXS
1/8"	10.29	0.405		1.25 0.049 0.28				1.73 0.068 0.37			2.41 0.095 0.47						
1/4"	13.72	0.540		1.65 0.065 0.48				2.24 0.088 0.64			3.02 0.119 0.82						
3/8"	17.15	0.675		1.65 0.065 0.64				2.31 0.091 0.87			3.20 0.126 1.12						
1/2"	21.34	0.840	1.65 0.065 0.81	2.11 0.083 1.02	2.11 0.083 1.02			2.77 1.090 1.29			3.73 0.147 1.64					4.75 0.187 1.97	7.47 0.294 2.59
3/4"	26.67	1.050	1.65 0.065 1.03	2.11 0.083 1.30	2.11 0.083 1.30			2.87 0.113 1.71			3.91 0.154 2.23					5.54 0.218 2.93	7.82 0.308 3.69
1"	33.40	1.315	1.65 0.065 1.31	2.77 0.109 2.13	2.77 0.109 2.13			3.38 0.133 2.54			4.55 0.179 3.29					6.35 0.250 4.30	9.09 0.358 5.53
1-1/4"	42.16	1.660	1.65 0.065 1.67	2.77 0.109 2.73	2.77 0.109 2.73			3.56 0.140 3.44			4.85 0.191 4.53					6.35 0.250 5.69	9.70 0.362 7.88
1-1/2"	48.26	1.900	1.65 0.065 1.93	2.77 0.109 3.16	2.77 0.109 3.16			3.68 0.145 4.11			5.08 0.200 5.49					7.14 0.281 7.35	10.15 0.400 9.69
2"	60.33	2.375	1.65 0.065 2.42	2.77 0.109 3.99	2.77 0.109 3.99			3.91 0.154 5.52			5.54 0.218 7.60					8.71 0.343 11.26	11.07 0.436 13.65
2-1/2"	73.03	2.875	2.11 0.083 3.75	3.05 0.120 5.34	3.05 0.120 5.34			5.16 0.203 8.77			7.01 0.276 11.59					9.53 0.375 15.15	14.02 0.552 20.72
3"	88.90	3.500	2.11 0.083 4.59	3.05 0.120 6.56	3.05 0.120 6.56			5.49 0.216 11.47			7.62 0.300 15.51					11.13 0.438 21.67	15.24 0.600 28.11
3-1/2"	101.60	4.000	2.11 0.083 5.25	3.05 0.120 7.53	3.05 0.120 7.53			5.74 0.226 13.78			8.08 0.318 18.92						16.15 0.636 34.56
4"	114.30	4.500	2.11 0.083 5.93	3.05 0.120 8.50	3.05 0.120 8.50			6.02 0.237 16.32			8.56 0.337 22.66			11.13 0.438 28.75		12.49 0.531 34.05	17.12 0.674 41.66
5"	141.30	5.563	2.77 0.109 9.61	3.40 0.134 11.74	3.40 0.134 11.74			6.55 0.258 22.10			9.53 0.375 31.44			12.70 0.500 10.90		15.88 0.625 49.87	19.05 0.750 58.31
6"	168.28	6.625	2.77 0.109 11.47	3.40 0.134 14.04	3.40 0.134 14.04			7.11 0.280 28.69			10.97 0.432 43.21			14.27 0.562 55.03		18.24 0.718 68.53	21.95 0.864 80.43
8"	219.08	8.625	2.77 0.109 15.00	3.76 0.148 20.27	3.76 0.148 20.27	6.35 0.250 33.82	7.04 0.277 37.38	8.18 0.322 43.20		10.81 0.406 53.90	12.70 0.500 65.63		15.06 0.593 76.93	18.24 0.718 91.73	20.62 0.812 102.47	23.01 0.906 112.97	22.23 0.875 109.57
10"	273.05	10.75	3.40 0.134 22.95	4.19 0.165 28.20	4.19 0.165 28.20	6.35 0.250 42.41	7.80 0.307 51.81	9.27 0.365 61.22		12.70 0.500 82.80	12.70 0.500 82.80	15.06 0.593 97.27	18.24 0.712 116.38	21.41 0.843 134.90	25.40 1.000 157.51	28.58 1.125 174.95	25.40 1.000 157.51
12"	323.85	12.75	3.96 0.156 31.72	4.57 0.180 36.54	4.57 0.180 36.54	6.35 0.250 50.48	8.38 0.330 66.20	9.53 0.375 75.01	10.31 0.406 80.94	14.27 0.562 110.62	12.70 0.500 98.95	17.45 0.687 133.88	21.41 0.843 162.14	25.40 1.000 189.82	28.58 1.125 211.31	33.32 1.312 242.40	25.40 1.000 189.82
14"	355.60	14.00	3.96 0.156 34.86	4.78 0.188 41.99	6.35 0.250 55.53	7.92 0.312 68.95	9.53 0.375 82.58	9.53 0.375 82.58	11.13 0.438 96.00	15.06 0.593 128.42	12.70 0.500 109.40	19.05 0.750 160.54	23.80 0.937 197.74	27.76 1.093 227.88	31.75 1.250 257.47	35.71 1.406 286.04	
16"	406.40	16.00	4.19 0.156 42.20	4.78 0.188 48.07	6.35 0.250 63.61	7.92 0.312 79.03	9.53 0.375 94.70	9.53 0.375 94.70	12.70 0.500 125.20	16.66 0.656 162.59	12.70 0.500 125.20	21.41 0.843 206.40	26.19 1.031 249.34	30.94 1.218 290.88	36.53 1.438 338.32	40.46 1.593 370.74	
18"	457.20	18.00	4.19 0.165 47.46	4.78 0.188 54.15	6.35 0.250 71.69	7.92 0.312 89.10	9.53 0.375 124.32	9.53 0.375 106.83	14.27 0.562 158.27	19.05 0.750 209.00	12.70 0.500 141.35	23.80 0.937 258.29	29.36 1.156 314.54	34.93 1.375 369.34	39.67 1.562 414.75	45.24 1.781 466.67	
20"	508.00	20.00	4.78 0.188 60.23	5.54 0.218 69.70	6.35 0.250 79.76	9.53 0.375 118.93	12.70 0.500 157.51	9.53 0.375 118.93	15.06 0.593 185.89	20.82 0.812 251.65	12.70 0.500 157.51	26.19 1.031 315.97	32.54 1.281 387.41	38.10 1.500 448.30	44.45 1.750 515.94	49.99 1.968 573.31	
22"	558.80	22.00	4.78 0.188 65.95	5.54 0.218 76.75	6.35 0.250 87.84	9.53 0.375 131.07	12.70 0.500 173.66	9.53 0.375 131.07	15.88 0.625 316.04	22.23 0.875 298.55	12.70 0.500 173.66	28.57 1.125 379.70	34.92 1.375 457.83	41.27 1.525 626.17	47.62 1.875 609.30	53.97 2.125 682.57	
24"	609.60	24.00	5.54 0.218 83.80	6.35 0.250 95.92	6.35 0.250 95.92	9.53 0.375 143.20	14.28 0.562 212.72	9.53 0.375 143.20	17.45 0.687 258.74	24.59 0.968 360.21	12.70 0.500 189.82	30.94 1.218 448.30	38.89 1.531 555.76	46.02 1.812 649.44	52.37 2.062 730.72	59.51 2.343 719.70	

**Bold = mm.**      Standard = inch.      *Italics = kg/m.*