

TWIN FERRULE COMPRESSION FITTINGS**PRODUCT INFORMATION**

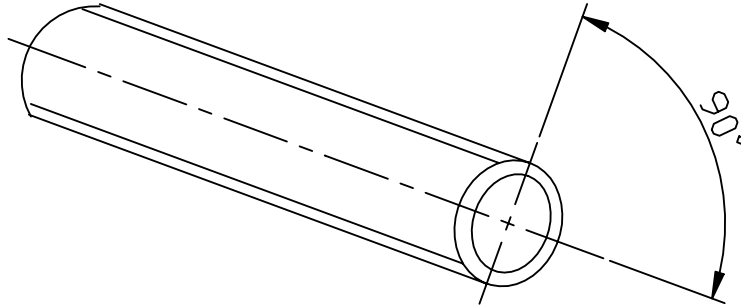
- * 316 stainless steel
- * Metric sizes 4mm to 25mm
- * Dimensions in mm
- * Silver plated nuts
- * Fractional sizes 1/8" to 1"
- * Weights in Kg/100

INDEX

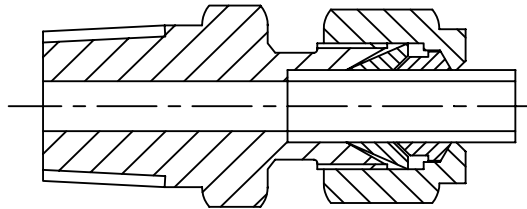
DESCRIPTION	PAGE	DESCRIPTION	PAGE
Assembly instructions	5.2	Nut	5.10
Metric/Imperial identification	5.2	Front ferrule	5.11
Male connector BSPT & NPT	5.3	Rear ferrule	5.11
Male connector BSPP	5.4	Male bulkhead	5.11
Female connector	5.5	Female bulkhead	5.12
Equal union	5.6	Female stud elbow	5.12
Reducing union	5.6	Male stud elbow	5.13
Bulkhead union	5.7	Male branch tee	5.14
Equal elbow	5.7	Male run tee	5.15
Equal tee	5.8	Equal cross	5.15
Reducing adaptor	5.8	Female branch tee	5.16
Male standpipe adaptor	5.9	Female run tee	5.16
Female standpipe adaptor	5.9		
Blanking cap	5.10		
Blanking plug	5.10		

ASSEMBLY INSTRUCTIONS

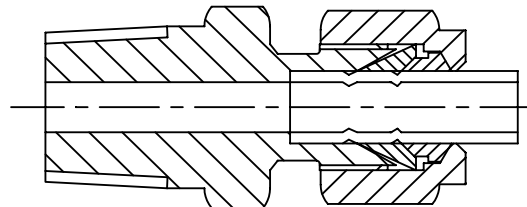
1. Cut the tube to the required length making sure ends are square and all burrs removed.



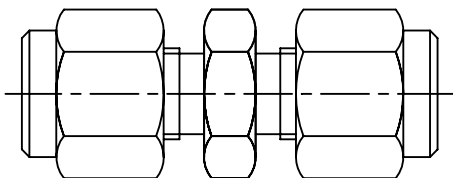
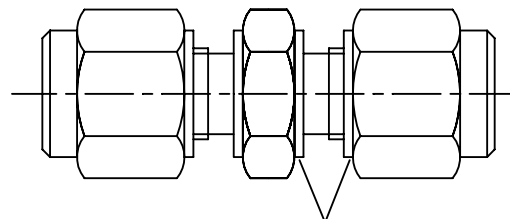
2. Insert the tube into the fitting and ensure that it is pushed firmly onto the stop inside.



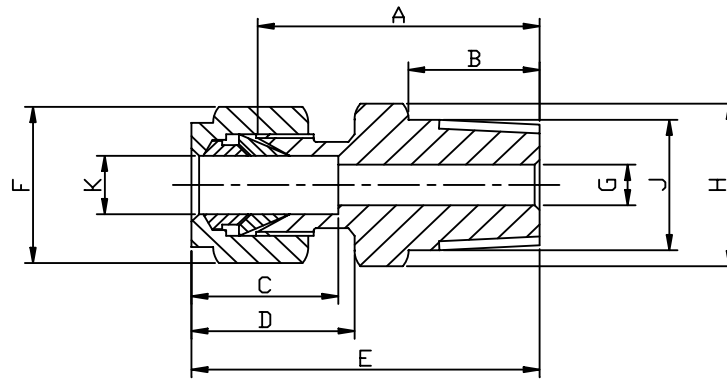
3. Make sure the nut is finger tight and then turn the nut another 1-1/4 turns.



4. Fittings can be assembled and disassembled many times. On reassembly tighten the nut until finger tight, then tighten with a wrench until a rise in torque is felt. Finally tighten another 1/4 turn

IDENTIFICATION OF FRACTIONAL AND METRIC FITTINGS**FRACTIONAL****METRIC****MACHINED COLLAR ON NUT AND BODY**

Male Connector NPT/BSPT



Fractional

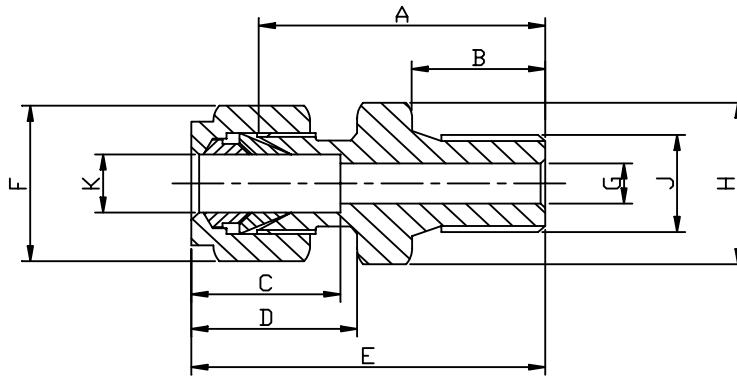
K TUBE	J THREAD	PART No **	A	B	C	D	E	F HEX	G	H HEX	Kg/100
1/8	1/8	2MC2**	23.0	9.5	13.5	16.3	30.6	11.1	2.4	11.1	1.7
1/8	1/4	2MC4**	28.6	14.3	13.5	16.3	36.1	11.1	2.4	14.3	3.2
3/16	1/8	3MC2**	24.2	9.5	14.3	16.7	31.4	12.7	3.2	11.1	2.0
3/16	1/4	3MC4**	29.4	14.3	14.3	16.7	36.9	12.7	3.2	14.3	2.6
1/4	1/8	4MC2**	25.4	9.5	15.1	17.9	32.9	14.3	4.8	14.3	2.5
1/4	1/4	4MC4**	30.2	14.3	15.1	17.9	37.7	14.3	4.8	14.3	3.0
1/4	3/8	4MC6**	31.0	14.3	15.1	17.9	38.5	14.3	4.8	17.5	4.2
1/4	1/2	4MC8**	36.5	19.1	15.1	17.9	44.1	14.3	4.8	22.2	6.5
5/16	1/4	5MC4**	31.8	14.3	16.7	19.5	40.1	15.9	6.4	14.3	3.9
3/8	1/4	6MC4**	32.5	14.3	16.7	19.5	40.1	17.5	7.1	17.5	4.5
3/8	3/8	6MC6**	32.5	14.3	16.7	19.5	40.1	17.5	7.1	17.5	5.0
3/8	1/2	6MC8**	38.1	19.1	16.7	19.5	45.6	17.5	7.1	22.2	8.3
1/2	1/4	8MC4**	33.3	14.3	23.0	21.8	42.3	22.2	7.1	22.2	7.1
1/2	3/8	8MC6**	33.3	14.3	23.0	21.8	42.3	22.2	10.3	22.2	7.4
1/2	1/2	8MC8**	38.1	19.1	23.0	21.8	45.6	22.2	10.3	22.2	9.4
1/2	3/4	8MC12**	38.9	19.1	23.0	21.8	49.2	22.2	10.3	28.6	11.2
5/8	1/2	10MC8**	38.9	19.1	23.8	21.4	45.6	25.4	12.7	23.8	10.6
5/8	3/4	10MC12**	38.9	19.1	23.8	21.4	45.6	25.4	12.7	28.6	12.6
3/4	1/2	12MC8**	40.5	19.1	24.6	21.8	50.4	28.6	12.7	28.6	12.3
3/4	3/4	12MC12**	40.5	19.1	24.6	21.8	50.4	28.6	15.9	28.6	13.9
1	3/4	16MC12**	44.5	19.1	31.4	26.6	57.6	38.1	18.3	38.1	23.5
1	1	16MC16**	49.2	23.8	31.4	26.6	62.3	38.1	22.2	38.1	26.3

Metric

K TUBE	J THREAD	PART No **	A	B	C	D	E	F HEX	G	H HEX	Kg/100
4	1/8	4mMC2**	25.4	9.5	14.5	16.9	32.8	13	2.8	13	2.2
4	1/4	4mMC4**	30.2	14.3	14.5	16.9	37.6	13	2.8	14	3.0
6	1/8	6mMC2**	25.4	9.5	16.1	18.5	33.6	14	4.7	14	2.5
6	1/4	6mMC4**	30.2	14.3	16.1	18.5	38.4	14	4.7	14	3.1
6	3/8	6mMC6**	31.0	14.3	16.1	18.5	39.2	14	4.7	17	4.7
6	1/2	6mMC8**	36.5	19.1	16.1	18.5	44.7	14	4.7	22	7.1
8	1/4	8mMC4**	31.8	14.3	16.9	19.3	40.0	16	6.4	14	3.9
8	3/8	8mMC6**	31.8	14.3	16.9	19.3	40.0	16	6.4	17	4.7
10	1/4	10mMC4**	32.5	14.3	17.7	20.1	40.7	19	7.1	17	4.8
10	3/8	10mMC6**	32.5	14.3	17.7	20.1	40.7	19	7.9	17	5.5
10	1/2	10mMC8**	38.1	19.1	17.7	20.1	46.3	19	7.9	22	7.3
12	1/4	12mMC4**	33.3	14.3	23.5	22.7	44.1	22	7.1	22	7.1
12	3/8	12mMC6**	33.3	14.3	23.5	22.7	44.1	22	9.5	22	7.6
12	1/2	12mMC8**	38.1	19.1	23.5	22.7	48.9	22	9.5	22	9.7
12	3/4	12mMC12**	38.9	19.1	23.5	22.7	49.2	22	10.3	29	11.2
16	1/2	16mMC8**	38.9	19.1	25.1	22.7	49.7	25	12.7	24	10.6
16	3/4	16mMC12**	38.9	19.1	25.1	22.7	49.7	25	12.7	27	12.7
20	1/2	20mMC8**	40.5	19.1	25.1	22.7	51.3	30	12.7	29	13.7
20	3/4	20mMC12**	40.5	19.1	25.1	22.7	51.3	30	16.7	29	15.4
25	3/4	25mMC12**	44.5	19.1	31.8	27.0	57.2	38	18.3	35	20.6
25	1	25mMC16**	50.0	23.8	31.8	27.0	62.7	38	22.2	38	27.1

** Suffix for different threads: NPT, BSPT.

Male Connector BSPP



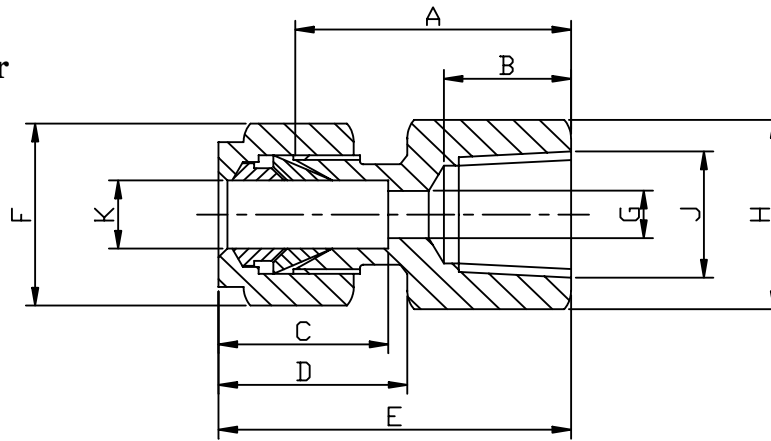
Fractional

K TUBE	J THREAD	PART No	A	B	C	D	E	F HEX	G	H HEX	Kg/100
1/8	1/8	2MC2BSPP	23.4	7.1	13.5	16.3	30.0	11.1	2.4	14.3	1.9
1/8	1/4	2MC4BSPP	28.7	11.2	13.5	16.3	35.3	11.1	2.4	19.1	3.5
3/16	1/8	3MC2BSPP	24.2	7.1	14.3	16.7	30.4	12.7	3.2	14.3	2.2
3/16	1/4	3MC4BSPP	29.4	11.2	14.3	16.7	36.0	12.7	3.2	19.1	2.9
1/4	1/8	4MC2BSPP	24.9	7.1	15.1	17.9	32.3	14.3	4.8	14.3	2.8
1/4	1/4	4MC4BSPP	30.2	11.2	15.1	17.9	37.6	14.3	4.8	19.1	3.3
1/4	3/8	4MC6BSPP	31.5	11.2	15.1	17.9	38.9	14.3	4.8	22.2	4.6
1/4	1/2	4MC8BSPP	37.3	14.2	15.1	17.9	44.7	14.3	4.8	27.0	7.2
5/16	1/4	5MC4BSPP	31.8	11.2	16.7	19.5	39.0	15.9	6.4	19.1	4.3
3/8	1/4	6MC4BSPP	31.8	11.2	16.7	19.5	39.1	17.5	7.1	19.1	5.0
3/8	3/8	6MC6BSPP	33.0	11.2	16.7	19.5	40.4	17.5	7.1	22.2	5.0
3/8	1/2	6MC8BSPP	38.9	14.2	16.7	19.5	46.2	17.5	7.1	27.0	9.1
1/2	1/4	8MC4BSPP	32.5	11.2	23.0	21.8	42.3	22.2	7.1	20.6	7.8
1/2	3/8	8MC6BSPP	33.0	11.2	23.0	21.8	43.2	22.2	10.3	22.2	8.1
1/2	1/2	8MC8BSPP	38.9	14.2	23.0	21.8	49.0	22.2	10.3	27.0	10.3
1/2	3/4	8MC12BSPP	38.9	15.8	23.0	21.8	51.0	22.2	10.3	33.3	12.3
5/8	1/2	10MC8BSPP	38.9	14.2	23.8	21.4	49.0	25.4	12.7	27.0	11.7
5/8	3/4	10MC12BSPP	38.9	15.8	23.8	21.4	51.0	25.4	12.7	33.3	13.9
3/4	1/2	12MC8BSPP	38.9	14.2	24.6	21.8	49.0	28.6	12.7	27.0	13.5
3/4	3/4	12MC12BSPP	42.3	15.8	24.6	21.8	52.8	28.6	15.9	33.3	15.3
1	3/4	16MC12BSPP	43.7	15.8	31.4	26.6	56.2	38.1	18.3	34.9	25.8
1	1	16MC16BSPP	47.8	18.3	31.4	26.6	59.9	38.1	22.2	41.3	28.9

Metric

K TUBE	J THREAD	PART No	A	B	C	D	E	F HEX	G	H HEX	Kg/100
4	1/8	4mMC2BSPP	24.1	7.1	13.7	16.1	30.7	13	2.8	14	2.4
4	1/4	4mMC4BSPP	28.0	11.2	13.7	16.1	32.0	13	2.8	19	3.3
6	1/8	6mMC2BSPP	24.9	7.1	15.3	17.7	32.3	14	4.7	14	2.8
6	1/4	6mMC4BSPP	30.2	11.2	15.3	17.7	37.6	14	4.7	19	3.4
6	3/8	6mMC6BSPP	31.5	11.2	15.3	17.7	38.9	14	4.7	22	5.2
6	1/2	6mMC8BSPP	37.3	14.2	15.3	17.7	44.7	14	4.7	27	7.8
8	1/4	8mMC4BSPP	31.0	1.2	16.2	18.6	38.5	16	6.4	15	4.3
8	3/8	8mMC6BSPP	32.3	11.2	16.2	18.6	39.8	16	6.4	19	5.2
10	1/4	10mMC4BSPP	31.8	11.2	17.2	19.5	39.4	19	7.1	19	5.3
10	3/8	10mMC6BSPP	33.0	11.2	17.2	19.5	40.6	19	7.9	22	6.1
10	1/2	10mMC8BSPP	38.9	14.2	17.2	19.5	46.5	19	7.9	27	8.1
12	1/4	12mMC4BSPP	32.5	11.2	22.8	22.0	42.6	22	7.1	22	7.8
12	3/8	12mMC6BSPP	33.0	11.2	22.8	22.0	43.1	22	9.5	22	8.4
12	1/2	12mMC8BSPP	38.9	14.2	22.8	22.0	49.0	22	9.5	27	10.7
12	3/4	12mMC12BSPP	42.7	15.7	22.8	22.0	52.8	22	10.3	35	12.3
16	1/2	16mMC8BSPP	38.9	14.2	24.4	22.0	43.9	25	12.7	27	11.7
16	3/4	16mMC12BSPP	42.7	15.7	24.4	22.0	49.0	25	12.7	35	13.9
20	1/2	20mMC8BSPP	40.4	14.2	26.0	22.0	50.5	30	12.7	30	15.1
20	3/4	20mMC12BSPP	42.7	15.7	26.0	22.0	52.8	30	16.7	35	16.9
25	3/4	25mMC12BSPP	45.2	15.7	31.3	26.5	57.5	38	18.3	35	22.7
25	1	25mMC16BSPP	47.8	18.3	31.3	26.5	60.1	38	22.2	41	29.8

Female Connector BSPP/NPT/BSPT



Fractional

K TUBE	J THREAD	PART No **	A	B	C	D	E	F HEX	G	H HEX	Kg/100
1/8	1/8	2FC2**	22.2	9.92	13.5	16.3	29.8	11.1	2.4	14.3	2.4
1/8	1/4	2FC4**	29.4	15.1	13.5	16.3	36.9	11.1	2.4	19.1	4.4
3/16	1/8	3FC2**	23.0	9.92	14.3	16.7	30.2	12.7	3.2	14.3	2.3
3/16	1/4	3FC4**	29.4	9.92	13.5	16.3	36.9	11.1	2.4	19.1	4.5
1/4	1/8	4FC2**	23.8	9.92	15.1	17.9	31.4	14.3	4.8	14.3	2.8
1/4	1/4	4FC4**	28.6	15.1	15.1	17.9	35.6	14.3	4.8	19.1	4.6
1/4	3/8	4FC6**	30.2	15.0	15.2	17.8	37.6	14.3	4.8	22.2	6.3
1/4	1/2	4FC8**	35.1	19.8	15.2	17.8	42.4	14.3	4.8	27.0	6.4
5/16	1/4	5FC4**	29.5	15.0	16.3	19.0	36.8	15.9	6.4	19.1	5.6
3/8	1/4	6FC4**	30.1	15.1	16.7	19.5	37.7	17.5	7.1	19.1	5.1
3/8	3/8	6FC6**	31.8	15.1	16.7	19.5	39.3	17.5	7.1	22.2	6.4
3/8	1/2	6FC8**	36.6	19.8	16.7	19.5	43.9	17.5	7.1	27.0	8.0
1/2	1/4	8FC4**	30.2	15.0	22.3	21.8	40.4	17.5	7.1	33.3	6.4
1/2	3/8	8FC6**	31.8	15.1	23.0	21.8	42.1	22.2	10.3	22.2	8.0
1/2	1/2	8FC8**	36.5	19.8	23.0	21.8	46.8	22.2	10.3	28.6	13.5
1/2	3/4	8FC12**	38.1	20.6	23.0	21.8	48.4	22.2	10.3	33.3	15.7
5/8	1/2	10FC8**	37.3	19.8	23.8	21.4	46.8	25.4	12.7	28.6	13.1
5/8	3/4	10FC12**	38.1	20.6	24.4	21.8	48.3	25.4	12.7	33.3	16.0
3/4	1/2	12FC8**	36.5	19.8	24.6	21.8	46.8	28.5	15.9	28.5	13.8
3/4	3/4	12FC12**	38.1	20.6	24.6	21.8	48.4	28.5	15.9	33.3	17.8
1	3/4	16FC12**	41.3	20.6	31.4	26.6	54.4	38.1	22.2	38.1	29.8
1	1	16FC16**	50.8	25.4	31.4	26.6	63.9	38.1	22.2	42.3	40.5

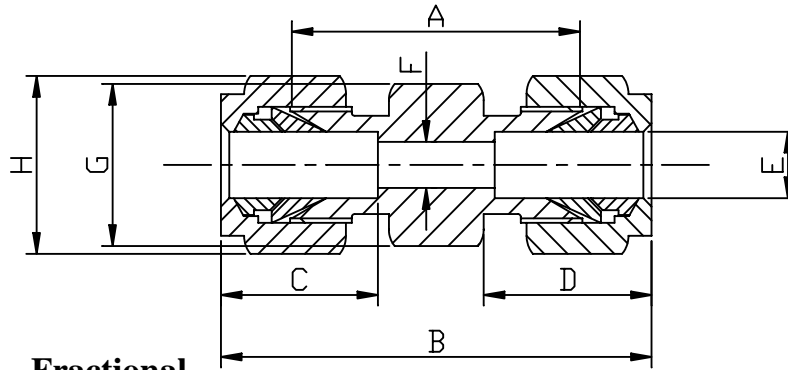
Metric

K TUBE	J THREAD	PART No **	A	B	C	D	E	F HEX	G	H HEX	Kg/100
4	1/8	4mFC2**	23.0	9.9	14.5	16.9	30.4	13	2.8	14	2.6
4	1/4	4mFC4**	27.8	15.0	14.5	16.9	35.2	13	2.8	19	4.6
6	1/8	6mFC2**	23.8	9.9	16.1	18.5	32.0	14	4.7	14	3.0
6	1/4	6mFC4**	28.6	15.0	16.1	18.5	36.8	14	4.7	19	5.0
6	3/8	6mFC6**	30.2	15.0	16.1	18.5	38.4	14	4.7	22	6.3
6	1/2	6mFC8**	35.1	19.8	15.3	17.7	42.5	14	4.7	27	6.4
8	1/4	8mFC4**	29.4	15.0	16.9	19.3	37.6	16	6.4	19	5.6
8	3/8	8mFC6**	31.0	15.0	16.9	19.3	39.2	16	6.4	22	6.9
10	1/4	10mFC4**	30.2	15.0	17.7	20.1	38.4	19	7.9	19	5.8
10	3/8	10mFC6**	31.8	15.0	17.7	20.1	40.0	19	7.9	22	6.7
10	1/2	10mFC8**	36.6	19.8	17.7	20.1	44.2	19	7.9	27	8.0
12	1/4	12mFC4**	30.2	15.0	22.8	22.0	40.3	22	9.5	22	6.4
12	3/8	12mFC6**	31.8	15.0	23.5	22.7	42.6	22	9.5	22	8.0
12	1/2	12mFC8**	37.3	19.8	23.5	22.7	48.1	22	9.5	27	11.8
12	3/4	12mFC12**	38.1	20.6	23.0	22.7	48.4	22	9.5	33	15.7
16	1/2	16mFC8**	37.3	19.8	25.1	22.7	48.1	25	12.7	29	15.4
16	3/4	16mFC12**	38.1	20.6	25.1	22.7	49.2	30	12.7	33	16.0
20	1/2	20mFC8**	37.3	19.8	25.1	22.7	48.1	30	16.7	29	13.8
20	3/4	20mFC12**	41.3	20.6	25.1	22.7	52.1	30	16.7	33	21.0
25	3/4	25mFC12**	43.7	20.6	31.8	27.0	56.4	38	18.3	35	26.7
25	1	25mFC16**	50.8	25.4	31.8	27.0	63.5	38	22.0	43	40.8

** Suffix for different threads:

BSPP, NPT, BSPT

Equal Union



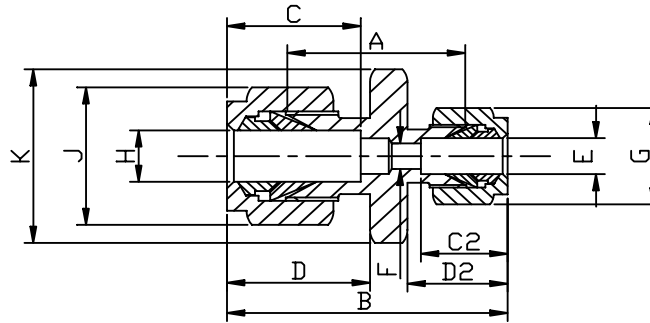
Fractional

E TUBE	PART No	A	B	C	D	F	G HEX	H HEX	Kg/100
1/8	2U	22.2	37.3	13.5	16.3	2.4	11.1	11.1	1.5
3/16	3U	24.2	40.1	14.3	16.7	3.2	11.1	12.7	1.7
1/4	4U	26.2	41.3	15.1	17.9	4.8	14.3	14.3	4.0
5/16	5U	28.2	44.9	16.7	19.5	6.4	14.3	15.9	4.9
3/8	6U	30.2	45.2	16.7	19.5	7.1	17.5	17.5	5.8
1/2	8U	31.0	51.6	23.0	21.8	10.3	22.2	22.2	9.8
5/8	10U	31.8	50.8	23.8	21.4	12.7	23.8	25.4	9.9
3/4	12U	33.3	53.2	24.6	21.8	15.9	28.6	28.6	10.5
1	16U	40.5	66.7	31.4	26.6	22.2	38.1	38.1	28.1

Metric

E TUBE	PART No	A	B	C	D	F	G HEX	H HEX	Kg/100
4	4mU	25.4	40.2	14.5	16.9	2.8	13	13	1.9
6	6mU	26.2	41.0	16.1	18.5	2.7	13	14	3.4
8	8mU	28.2	44.6	16.9	19.3	6.4	14	16	4.9
10	10mU	30.2	46.6	17.7	20.1	7.9	18	19	6.6
12	12mU	30.9	52.9	23.5	22.7	9.5	22	22	10.2
16	16mU	31.8	53.4	25.1	22.7	12.7	24	25	13.0
20	20mU	34.1	55.7	25.1	22.7	16.7	29	30	16.9
25	25mU	40.5	65.9	31.8	27.0	22.0	55	38	17.3

Reducing Union



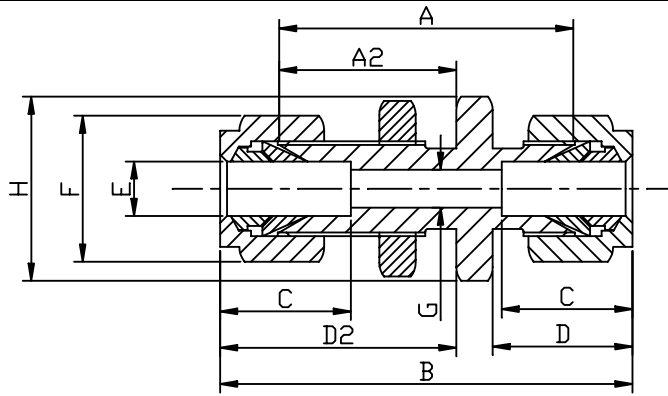
Fractional

H TUBE	E TUBE	PART No	A	B	C	C2	D	D2	F	G HEX	J HEX	K HEX	Kg/100
1/4	1/8	4RU2	24.6	39.7	15.1	13.5	17.9	16.3	2.4	11.1	14.3	14.3	3.3
3/8	1/4	6RU4	28.6	43.7	16.7	15.1	19.5	17.9	4.8	14.3	17.5	17.5	5.3
1/2	1/4	8RU4	29.3	47.2	23.0	15.1	21.8	17.9	4.8	14.3	22.2	22.2	7.6
1/2	5/16	8RU5	30.2	48.8	23.0	16.7	21.8	19.5	6.4	15.9	22.2	22.2	8.4
1/2	3/8	8RU6	31.0	48.8	23.0	16.7	21.8	19.5	7.1	14.3	22.2	22.2	8.2
3/4	1/2	12RU8	33.3	53.6	24.6	23.0	21.8	21.8	10.3	22.2	28.6	28.6	13.6
1	1/2	16RU8	38.1	61.5	31.4	23.0	26.6	21.8	10.3	22.2	38.1	38.1	25.1
1	5/8	16RU10	38.1	60.7	31.4	23.8	26.6	21.4	12.7	25.4	38.1	38.1	25.2
1	3/4	16RU12	38.1	61.1	31.4	24.6	26.6	21.8	15.9	22.2	38.1	38.1	25.6

Metric

H TUBE	E TUBE	PART No	A	B	C	C2	D	D2	F	G HEX	J HEX	K HEX	Kg/100
6	4	6mRU4	25.4	41.0	16.1	14.5	18.5	16.9	2.4	13	14	11	3.1
8	6	8mRU6	27.4	43.8	16.9	16.1	19.3	18.5	4.8	13	16	14	4.2
10	6	10mRU6	28.6	45.0	17.7	16.1	20.1	18.5	4.7	13	19	17	5.2
12	6	12mRU6	29.4	47.8	23.5	16.1	22.7	18.5	4.7	13	22	22	7.3
12	10	12mRU10	31.0	50.0	23.5	17.7	22.7	20.1	8.0	19	22	22	9.0
16	12	16mRU12	31.8	53.4	25.1	23.5	22.7	22.7	9.5	22	22	24	12.3
20	12	20mRU12	33.3	54.9	25.1	23.5	22.7	22.7	9.5	22	25	29	15.1
25	12	25mRU12	37.3	60.8	31.8	23.5	27.0	22.7	9.5	22	30	38	22.2
25	16	25mRU16	37.3	60.8	31.8	25.1	27.0	22.7	12.7	25	38	38	23.8
25	20	25mRU20	37.3	60.8	31.8	25.1	27.0	22.7	12.7	30	38	38	24.6

Bulkhead Union



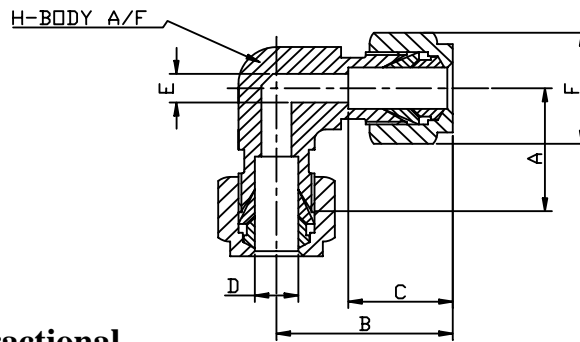
Fractional

E TUBE	PART No	A	A2	B	C	D	D2	F HEX	H HEX	G	PANEL HOLE DRILL SIZE	PANEL THICK-NESS MAX	Kg/100
1/8	2BHU	38.1	24.6	53.2	13.5	16.3	32.2	11.1	11.1	2.4	8.3	11.1	3.7
3/16	3BHU	39.7	25.4	54.0	13.5	16.3	32.5	12.7	11.1	3.2	9.9	11.1	3.9
1/4	4BHU	42.9	26.2	57.9	15.1	17.9	33.7	14.3	17.5	4.8	11.5	10.3	6.2
5/16	5BHU	46.0	28.6	62.3	16.7	19.5	36.9	15.9	19.1	6.4	13.1	11.1	7.6
3/8	6BHU	47.6	29.4	62.3	16.7	19.5	36.9	17.5	19.1	7.1	14.7	11.1	7.9
1/2	8BHU	50.8	31.8	71.4	23.0	21.8	42.1	22.2	23.8	10.3	19.5	12.7	14.2
5/8	10BHU	52.4	32.5	71.4	23.8	21.4	42.1	25.4	28.6	12.7	22.6	12.7	15.9
3/4	12BHU	58.7	37.3	78.6	24.6	21.8	47.2	28.6	33.3	15.9	25.8	16.7	25.1
1	16BHU	71.4	45.2	97.6	31.4	26.6	58.3	38.1	38.1	22.2	33.7	19.8	40.7

Metric

E TUBE	PART No	A	A2	B	C	D	D2	F HEX	H HEX	G	PANEL HOLE DRILL SIZE	PANEL THICK-NESS MAX	Kg/100
4	4mBHU	41.3	25.4	56.1	14.5	16.9	32.8	13	15	2.8	10.1	11	4.6
6	6mBHU	42.8	26.2	59.2	16.1	18.5	34.4	14	18	4.7	11.5	11	5.5
8	8mBHU	46.0	28.6	62.4	16.9	19.3	36.8	16	19	6.4	13.0	12	7.6
10	10mBHU	47.6	29.4	64.0	17.7	20.1	37.6	19	22	7.9	16.5	12	10.3
12	12mBHU	50.8	31.8	72.4	23.5	22.7	42.6	22	25	9.5	19.5	13	14.7
16	16mBHU	52.4	32.5	74.0	25.1	22.7	43.3	25	30	12.7	23.0	13	19.0
20	20mBHU	58.7	37.3	80.3	25.1	22.7	48.1	30	34	15.8	28.0	16	24.2
25	25mBHU	71.4	45.2	96.8	31.8	27.0	58.0	38	38	22.0	34.0	18	40.7

Equal Elbow



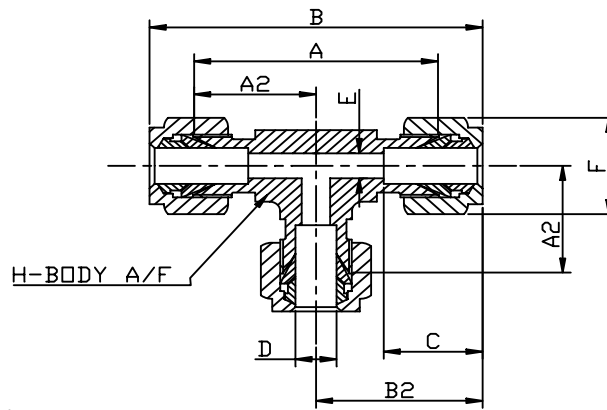
Fractional

D TUBE	PART No	A	B	C	E	F HEX	H A/F	Kg/100
1/8	2ELU	19.1	28.6	13.5	2.4	11.1	12.7	3.8
3/16	3ELU	19.8	29.0	14.3	3.2	12.7	12.7	4.1
1/4	4ELU	20.6	28.2	15.1	4.8	14.3	12.7	4.7
5/16	5ELU	22.2	30.6	16.7	6.4	15.9	14.3	6.4
3/8	6ELU	23.0	30.6	16.7	7.1	17.5	14.3	6.4
1/2	8ELU	25.0	35.3	23.0	10.3	22.2	17.5	11.7
5/8	10ELU	27.0	36.5	23.8	12.7	25.4	23.4	20.0
3/4	12ELU	29.8	39.7	24.6	15.9	28.6	23.4	19.0
1	16ELU	35.7	48.9	31.4	22.2	38.1	31.8	30.2

Metric

D TUBE	PART No	A	B	C	E	F HEX	H A/F	Kg/100
4	4mELU	19.8	28.8	14.5	2.8	13	13	4.1
6	6mELU	20.6	28.8	16.1	4.7	14	13	4.5
8	8mELU	22.2	30.4	16.9	6.3	16	14	6.4
10	10mELU	23.8	32.0	17.7	7.9	19	14	7.4
12	12mELU	25.0	35.8	23.5	9.5	22	17	12.2
16	16mELU	27.0	37.8	25.1	12.7	25	24	16.8
20	20mELU	33.3	44.1	25.1	16.7	30	30	19.1
25	25mELU	35.7	48.4	31.8	22.2	38	32	30.2

Equal Tee



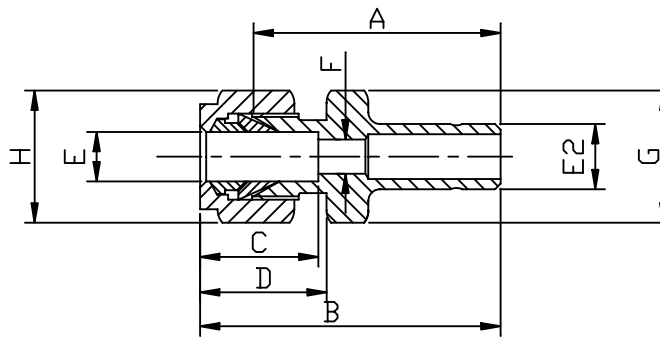
Fractional

D TUBE	PART No	A	A2	B	B2	C	E	F HEX	H A/F	Kg/100
1/8	2TTT	38.1	19.1	53.2	26.6	13.5	2.4	11.1	12.7	5.6
3/16	3TTT	39.7	19.8	54.0	26.7	13.5	3.2	12.7	12.7	5.7
1/4	4TTT	42.9	20.6	56.4	28.2	15.1	4.8	14.3	12.7	6.6
5/16	5TTT	46.0	22.2	61.1	30.6	16.7	6.4	15.9	14.3	9.2
3/8	6TTT	47.6	23.0	61.1	30.6	16.7	7.1	17.5	14.3	9.2
1/2	8TTT	50.8	25.0	70.6	35.3	23.0	10.3	22.2	17.5	16.4
5/8	10TTT	52.4	27.8	74.6	37.3	23.8	12.7	25.4	23.8	25.7
3/4	12TTT	58.7	29.8	80.2	39.7	24.6	15.9	28.6	23.8	32.0
1	16TTT	71.4	35.7	96.0	48.8	31.4	22.2	38.1	31.2	49.7

Metric

D TUBE	PART No	A	A2	B	B2	C	E	F HEX	H A/F	Kg/100
4	4mTTT	41.2	20.6	57.6	28.8	14.5	2.8	13	15	5.6
6	6mTTT	41.2	20.6	57.6	28.8	16.1	4.7	14	13	6.5
8	8mTTT	44.4	22.2	60.8	30.4	16.9	6.4	16	14	9.2
10	10mTTT	46.0	23.0	62.4	31.2	17.7	7.9	19	14	10.4
12	12mTTT	50.0	25.0	71.6	35.8	23.5	9.5	22	17	16.9
16	16mTTT	54.0	27.0	75.6	37.8	25.1	12.7	25	24	26.0
20	20mTTT	66.6	33.3	88.2	44.1	25.1	16.7	30	24	33.1
25	25mTTT	71.4	35.7	96.8	48.4	31.8	22.2	38	32	48.0

Reducing Adaptor



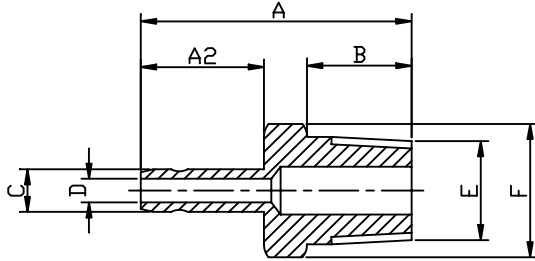
Fractional

E TUBE	E2 STANDPIPE	PART No	A	B	C	D	F	G HEX	H HEX	Kg/100
1/8	1/4	2RED4	30.2	37.7	13.5	16.3	2.4	111.1	11.1	1.7
1/4	3/8	4RED6	34.1	41.7	15.1	17.9	4.8	14.3	12.7	2.9
1/4	1/2	4RED8	39.7	47.2	15.1	17.9	4.8	14.3	14.3	3.3
5/16	1/2	5RED8	40.1	49.2	16.7	19.5	6.4	14.3	15.9	4.0
3/8	1/2	6RED8	42.1	49.6	16.7	19.5	7.1	17.5	17.5	4.4
1/2	3/4	8RED12	44.5	54.5	23.0	21.8	10.3	22.2	22.2	9.3
1/2	1	8RED16	50.8	61.1	23.0	21.8	10.3	28.6	25.4	12.1
5/8	1	10RED16	52.0	61.5	23.8	21.4	12.7	28.6	28.6	13.0
3/4	1	12RED16	52.4	64.3	24.6	21.8	15.9	28.6	38.1	14.2

Metric

E TUBE	E2 STANDPIPE	PART No	A	B	C	D	F	G HEX	H HEX	Kg/100
4	6	4mRED6	31.0	38.4	14.5	16.9	2.4	11	13	1.9
6	8	6mRED8	33.3	41.5	16.1	18.5	4.7	11	14	2.4
6	10	6mRED10	34.1	42.3	16.1	18.5	4.7	14	14	2.8
6	12	6mRED12	39.7	47.9	16.1	18.5	4.7	14	14	3.4
8	10	8mRED10	35.3	43.6	16.9	19.3	6.3	14	16	3.5
8	12	8mRED12	40.9	49.1	16.9	19.3	6.4	14	16	4.0
10	12	10mRED12	42.1	50.3	17.7	20.1	8.0	17	19	5.0
12	16	12mRED16	44.4	55.2	23.5	22.7	9.5	22	22	7.6
16	25	16mRED25	52.0	62.8	25.1	22.7	12.7	29	25	14.3
20	25	20mRED25	54.4	65.2	25.1	22.7	16.7	29	30	15.5

Male Standpipe Adaptor NPT/BSPT/BSPP



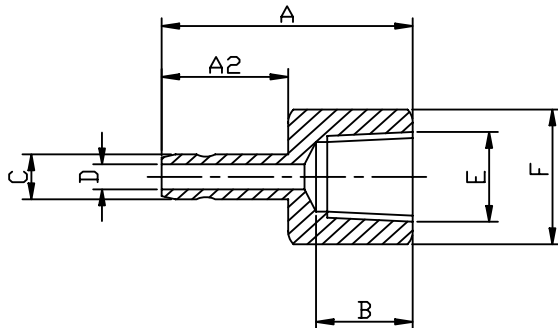
Fractional

C	E THREAD	PART No **	A	A2	B	D	F HEX	Kg/100
1/8	1/8	2ATPM2**	28.6	31.0	9.5	7.9	14.3	1.0
3/16	1/8	3ATPM2**	29.4	14.3	9.5	3.2	14.3	1.2
1/4	1/8	4ATPM2**	61.1	16.7	9.5	4.4	14.3	1.4
1/4	1/4	4ATPM4**	36.5	16.7	14.3	4.4	14.3	1.7
1/4	1/2	4ATPM8**	42.9	16.7	19.1	4.4	22.2	5.0
3/8	3/8	6ATPM6**	38.9	18.3	14.3	6.8	17.5	2.8
3/8	1/2	6ATPM8**	44.5	18.3	19.1	6.8	22.2	5.2
1/2	1/4	8ATPM4**	44.5	23.8	14.3	7.1	14.3	2.8
1/2	1/2	8ATPM8**	50.0	23.8	19.1	9.1	22.2	5.9
1/2	3/4	8ATPM12**	50.8	23.8	19.1	9.1	27.0	8.7
3/4	1/2	12ATPM8**	51.6	25.4	19.1	12.7	22.2	6.4
3/4	3/4	12ATPM12**	54.0	25.4	19.1	14.7	28.6	9.1
3/4	1	12ATPM16**	58.7	25.4	19.1	14.7	34.9	13.8
1	3/4	16ATPM12**	60.7	32.2	19.1	19.5	28.6	12.3

Metric

C	E THREAD	PART No **	A	A2	B	D	F HEX	Kg/100
4	1/8	4mATPM2**	28.6	13.5	9.5	2.0	11	1.0
6	1/8	6mATPM2**	31.8	16.7	9.5	4.0	11	1.4
6	1/4	6mATPM4**	36.5	16.7	14.3	4.0	14	1.7
6	1/2	6mATPM8**	42.9	16.7	19.1	4.0	22	4.9
10	1/4	10mATPM4**	38.1	18.3	14.3	7.1	14	2.1
10	3/8	10mATPM6**	38.9	18.3	14.3	7.1	17	2.8
10	1/2	10mATPM8**	44.5	18.3	19.1	7.1	22	5.1
12	1/4	12mATPM4**	44.5	23.8	14.3	7.1	14	2.8
12	3/8	12mATPM6**	44.5	23.8	14.3	8.3	17	3.8
12	1/2	12mATPM8**	50.0	23.8	19.1	8.3	22	5.9
12	3/4	12mATPM12**	50.8	23.8	19.1	8.3	29	8.7
16	1/2	16mATPM8**	52.4	25.4	19.1	12.3	22	6.1
16	3/4	16mATPM12**	52.4	25.4	19.1	12.3	29	7.6
20	3/4	20mATPM12**	56.3	27.0	19.1	16.5	29	9.1
20	1	20mATPM16**	61.9	27.0	23.8	15.5	38	13.8
25	3/4	25mATPM12**	60.7	32.1	19.1	19.1	29	12.3

Female Standpipe Adaptor NPT/BSPT/BSPP



OTHER SIZES ON REQUEST. BSPP DRAWING NOT SHOWN.

Fractional

C	E THREAD	PART No **	A	A2	B	D	F HEX	Kg/100
1/8	1/4	2ATPF4**	31.8	31.0	15.1	1.98	19.1	3.5
1/4	1/4	4ATPF4**	34.5	16.7	15.1	4.37	19.1	3.1
1/4	3/8	4ATPF6**	36.5	16.7	15.1	4.37	22.2	4.4
1/4	1/2	4ATPF8**	41.3	16.7	19.8	4.37	26.7	7.9
3/8	1/4	6ATPF4**	36.5	18.3	15.1	6.75	19.1	3.4
3/8	3/8	6ATPF6**	38.1	18.3	15.1	6.75	22.2	4.5
3/8	1/2	6ATPF8**	42.9	18.3	19.8	9.13	28.6	8.2
1/2	1/4	8ATPF4**	42.1	23.8	15.1	9.13	19.1	4.1
1/2	3/8	8ATPF6**	43.7	23.8	15.1	9.13	22.2	5.1
1/2	1/2	8ATPF8**	48.4	23.8	19.8	9.13	27.0	8.5
3/4	3/8	12ATPF6**	45.2	25.4	15.1	14.3	22.2	6.8
3/4	1/2	12ATPF8**	50.0	25.4	19.8	14.7	27.0	10.0
1	3/4	16ATPF12**	57.2	32.2	20.6	18.7	33.3	16.0

Metric

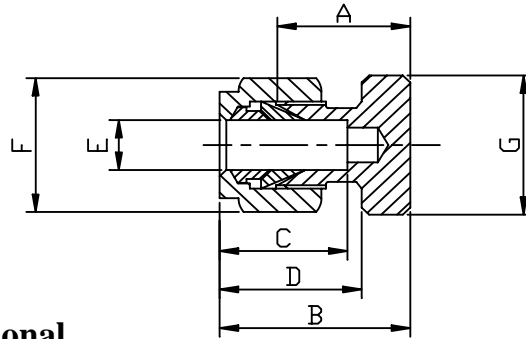
C	E THREAD	PART No **	A	A2	B	D	F HEX	Kg/100
4	1/4	4mATPF4**	34.1	15.9	15.0	2.8	19	3.0
6	1/4	6mATPF4**	34.9	16.7	15.0	3.9	19	3.1
6	3/8	6mATPF6**	36.5	16.7	15.0	3.9	22	4.4
6	1/2	6mATPF8**	42.1	16.7	19.8	3.9	27	7.9
8	1/4	8mATPF4**	35.7	17.5	15.0	5.5	19	4.5
8	3/8	8mATPF6**	37.3	17.5	15.0	5.5	22	4.8
10	1/4	10mATPF4**	36.5	18.3	15.0	7.1	19	3.5
10	3/8	10mATPF6**	38.1	18.3	15.0	7.1	22	5.0
10	1/2	10mATPF8**	43.7	18.3	19.8	7.1	27	8.2
12	1/4	12mATPF4**	42.1	23.8	15.0	8.3	19	4.1
12	3/8	12mATPF6**	43.7	23.8	15.0	8.3	22	5.2
12	1/2	12mATPF8**	49.2	23.8	19.8	8.3	27	8.5
16	1/4	16mATPF4**	46.8	25.4	15.0	12.3	19	5.7
16	1/2	16mATPF8**	50.8	25.4	19.8	12.3	27	9.5
20	3/4	20mATPF12**	52.4	27.0	20.6	15.5	33	6.8
20	1	20mATPF16**	57.2	27.0	25.4	15.5	43	10.0
25	3/4	25mATPF12**	57.5	32.1	20.6	15.5	33	16.0

OTHER SIZES ON REQUEST.

** Suffix for different threads:

NPT, BSPT or BSPP.

Blanking Cap



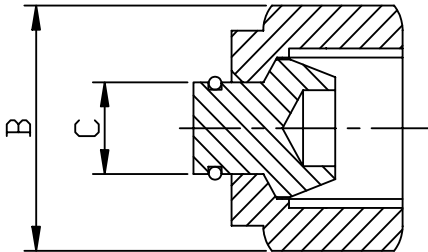
Fractional

E TUBE	PART No	A	B	C	D	F HEX	G HEX	Kg/100
1/8	2CAP	13.5	21.0	13.5	16.3	11.1	11.1	1.5
3/16	3CAP	14.7	21.0	14.3	16.7	12.7	11.1	2.0
1/4	4CAP	15.9	23.4	15.1	17.9	14.3	14.3	2.3
5/16	5CAP	17.1	25.4	16.7	19.5	15.9	14.3	3.0
3/8	6CAP	18.3	25.8	16.7	19.5	17.5	17.5	3.4
1/2	8CAP	19.1	29.4	23.0	21.8	22.2	22.2	6.1
5/8	10CAP	21.4	30.1	23.8	21.4	25.4	23.8	8.4
3/4	12CAP	23.0	32.9	24.6	21.8	28.6	28.6	10.9
1	16CAP	28.6	41.7	31.4	26.6	38.1	38.1	24.1

Metric

E TUBE	PART No	A	B	C	D	F HEX	G HEX	Kg/100
4	4mCAP	15.1	22.5	14.5	16.9	13	11	1.9
6	6mCAP	15.9	24.1	16.1	18.5	14	13	2.1
8	8mCAP	17.1	25.3	16.9	19.3	16	14	3.0
10	10mCAP	18.3	26.5	17.7	20.1	19	17	3.8
12	12mCAP	19.1	29.9	23.5	22.7	22	22	6.3
16	16mCAP	23.0	33.8	25.1	22.7	25	24	9.0
20	20mCAP	25.4	36.2	25.1	22.7	30	29	12.7
25	25mCAP	28.6	41.3	31.8	27.0	38	38	15.2

Blanking Plug



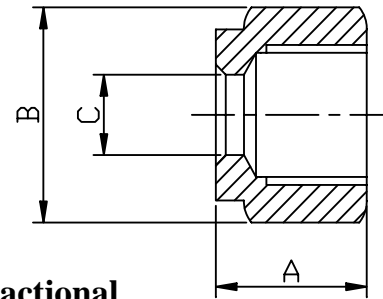
Fractional

C TUBE	PART No	B HEX	Kg/100
1/8	2FPLUG	11.1	0.8
3/16	3FPLUG	12.7	1.0
1/4	4FPLUG	14.3	1.4
5/16	5FPLUG	15.9	2.1
3/8	6FPLUG	17.5	2.2
1/2	8FPLUG	22.2	4.4
5/8	10FPLUG	25.4	5.7
3/4	12FPLUG	28.6	7.0
1	16FPLUG	38.1	16.7

Metric

C TUBE	PART No	B HEX	Kg/100
4	4mFPLUG	13	1.1
6	6mFPLUG	14	1.4
8	8mFPLUG	16	2.1
10	10mFPLUG	19	2.7
12	12mFPLUG	22	4.2
16	16mFPLUG	25	7.5
20	20mFPLUG	30	12.3
25	25mFPLUG	38	16.7

Compression Nut



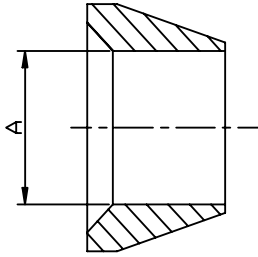
Fractional

C TUBE	PART No	THREAD	A	B HEX	Kg/100
1/8	2N	5/16-20UN	11.9	11.1	0.7
3/16	3N	3/8-20UN	11.9	12.7	0.6
1/4	4N	7/16-20UNF	12.7	14.3	1.0
5/16	5N	1/2-20UNF	13.5	15.9	1.5
3/8	6N	9/16-20UN	14.3	17.5	1.4
1/2	8N	3/4-20UNEF	17.5	22.2	2.6
5/8	10N	7/8-20UNEF	17.5	25.4	3.8
3/4	12N	1-20UNEF	17.5	28.6	3.5
1	16N	1-5/16-20UN	20.6	38.1	7.4

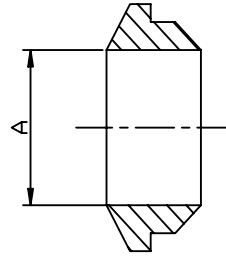
Metric

C TUBE	PART No	THREAD	A	B HEX	Kg/100
4	4mN	3/8-20UN	11.9	13	0.7
6	6mN	7/16-20UNF	12.7	14	0.9
8	8mN	1/2-20UNF	13.5	16	1.5
10	10mN	5/8-20UN	14.3	19	1.7
12	12mN	3/4-20UNEF	17.4	22	2.5
16	16mN	7/8-20UNEF	17.5	25	3.8
20	20mN	1-1/8-20UN	17.5	30	4.5
25	25mN	1-5/16-20UN	20.6	38	7.4

Front Ferrule



Back Ferrule



Fractional

A TUBE	PART No	Kg/100
1/8	2FC	0.05
3/16	3FC	0.10
1/4	4FC	0.10
5/16	5FC	0.20
3/8	6FC	0.25
1/2	8FC	0.30
5/8	10FC	0.40
3/4	12FC	0.45
1	16FC	1.20

Metric

A TUBE	PART No	Kg/100
4	4mFC	0.10
6	6mFC	0.10
8	8mFC	0.20
10	10mFC	0.25
12	12mFC	0.30
16	16mFc	0.40
20	20mFc	0.45
25	25mFc	1.20

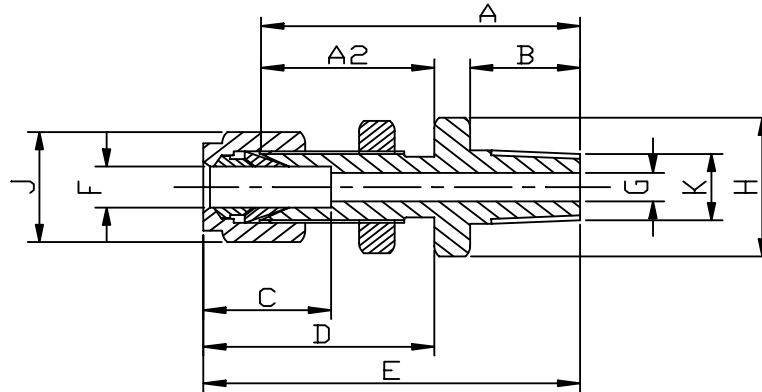
Fractional

A TUBE	PART No	Kg/100
1/8	2RC	0.04
3/16	3RC	0.05
1/4	4RC	0.10
5/16	5RC	0.15
3/8	6RC	0.17
1/2	8RC	0.20
5/8	10RC	0.20
3/4	12RC	0.25
1	16RC	0.30

Metric

A TUBE	PART No	Kg/100
4	4mRC	0.05
6	6mRC	0.10
8	8mRC	0.15
10	10mRC	0.17
12	12mRC	0.20
16	16mRC	0.20
20	20mRC	0.25
25	25mRC	0.30

Male Bulkhead



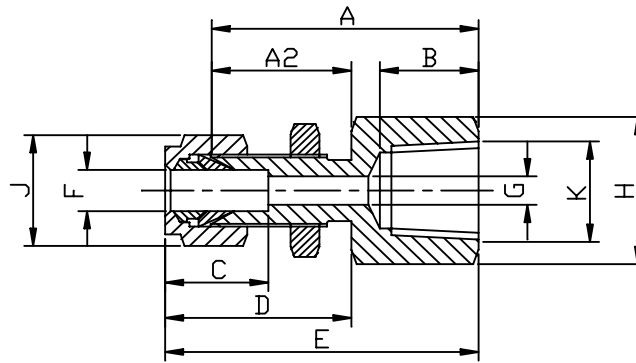
Fractional

F TUBE	K THREAD	PART No **	A	A2	B	C	D	E	G	H HEX	J HEX	PANEL HOLE DRILL SIZE	PANEL THICK-NESS MAX	Kg/100
1/4	1/8	4MBH2**	41.3	27.8	9.5	15.1	17.9	48.8	4.8	17.5	14.3	11.5	10.3	4.2
1/4	1/4	4MBH4**	46.0	26.2	14.3	13.1	17.9	53.6	4.8	17.5	14.3	11.5	10.3	5.6
3/8	1/4	6MBH4**	50.0	29.4	14.3	16.7	19.5	57.6	7.1	19.1	17.5	14.7	11.1	6.6
1/2	1/4	8MBH4**	53.2	31.8	14.3	23.0	21.8	63.5	10.3	23.8	22.2	19.5	12.7	10.4
1/2	1/2	8MBH8**	57.9	31.8	19.1	23.0	21.8	42.9	10.3	23.8	22.2	19.5	12.7	13.7

Metric

F TUBE	K THREAD	PART No **	A	A2	B	C	D	E	G	H HEX	J HEX	PANEL HOLE DRILL SIZE	PANEL THICK-NESS MAX	Kg/100
6	1/8	6mMBH2**	41.3	26.2	9.5	16.1	18.5	49.5	4.7	17	14	11.5	10	3.7
6	1/4	6mMBH4**	46.0	26.2	14.3	16.1	18.5	54.2	4.7	17	14	11.5	10	5.0
10	1/4	10mMBH4**	50.0	29.4	14.3	17.7	20.1	58.2	7.2	22	19	16.5	11	8.1
12	1/4	12mMBH4**	53.2	31.8	14.3	23.5	22.7	64.0	7.2	24	22	19.5	12	11.1
12	1/2	12mMBH8**	57.9	31.8	19.0	23.5	22.7	68.7	7.2	24	22	19.5	12	14.5

Female Bulkhead



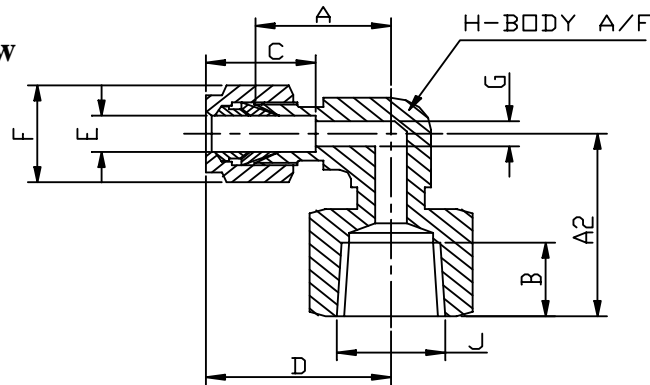
Fractional

F TUBE	K THREAD	PART No **	A	A2	B	C	D	E	G	H HEX	J HEX	PANEL HOLE DRILL SIZE	PANEL THICK-NESS MAX	Kg 100
1/4	1/8	4FBH2**	39.7	26.2	9.9	15.1	33.7	47.2	4.8	14.3	14.3	11.5	10.3	4.0
1/4	1/4	4FBH4**	44.5	26.3	15.1	15.1	33.7	52.0	4.8	19.1	14.3	11.5	10.3	6.4
3/8	1/4	6FBH4**	47.6	29.4	15.1	16.7	36.9	55.2	7.1	19.1	17.5	14.7	11.1	7.5
1/2	1/4	8FBH4**	51.6	31.2	15.1	23.0	42.1	61.9	10.3	22.2	22.2	19.5	12.7	13.6
1/2	1/2	8FBH8**	57.2	31.2	19.8	23.0	42.1	67.5	10.3	28.6	22.2	19.5	12.7	17.2

Metric

F TUBE	P THREAD	PART No **	A	A2	B	C	D	E	G	H HEX	J HEX	PANEL HOLE DRILL SIZE	PANEL THICK-NESS MAX	Kg 100
6	1/8	6mFBH2**	39.7	26.2	9.9	16.1	34.4	47.9	4.7	19	14	11.5	10	4.0
6	1/4	6mFBH4**	44.5	26.2	15.0	16.1	34.4	52.7	6.1	19	14	11.5	10	6.4
10	1/4	10mFBH4**	47.6	29.4	15.0	17.7	37.6	55.8	7.9	22	19	16.5	11	7.5
12	1/4	12mFBH4**	51.6	31.8	15.0	23.5	42.6	62.4	9.5	24	22	19.5	12	13.5
12	1/2	12mFBH8**	56.4	31.8	19.0	23.5	42.6	67.2	9.5	27	22	19.5	12	17.4

Female Stud Elbow



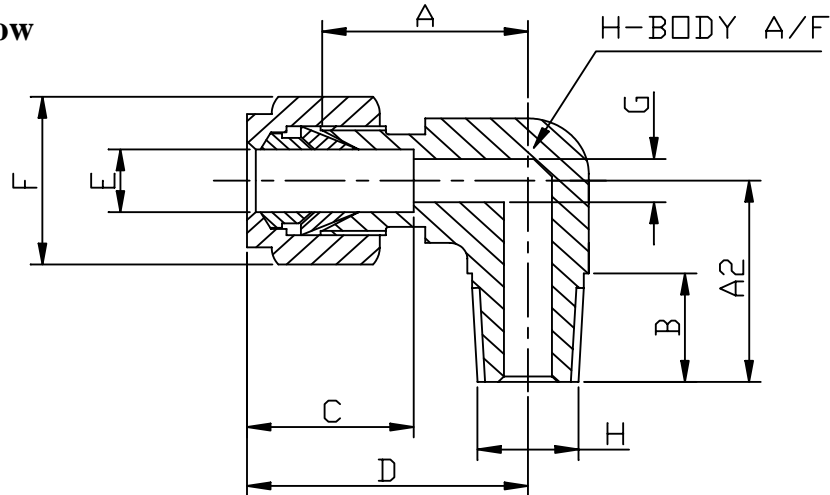
Fractional

E TUBE	J THREAD	PART No**	A	A2	B	C	D	F HEX	G	H A/F	Kg/100
1/4	1/8	4FE2**	22.2	22.2	9.9	15.1	28.2	14.3	4.8	12.7	4.7
1/4	1/4	4FE4**	22.2	30.2	15.1	15.1	29.8	14.3	4.8	14.3	6.1
3/8	1/4	6FE4**	23.8	30.2	15.1	16.7	31.4	17.5	5.6	14.3	7.3
1/2	1/4	8FE4**	26.2	31.8	15.1	23.0	36.5	22.2	5.6	17.5	13.4
1/2	1/2	8FE8**	30.2	41.3	19.8	23.0	40.5	22.2	10.3	23.8	21.9
3/4	3/4	12FE12**	31.4	33.3	20.6	24.6	41.3	28.6	15.9	23.8	39.4

Metric

E TUBE	J THREAD	PART No**	A	A2	B	C	E	F HEX	G	H A/F	Kg/100
6	1/8	6mFE2**	22.2	27.8	10.0	16.1	30.4	14	4.7	14	5.8
6	1/4	6mFE4**	22.2	30.2	15.0	16.1	30.4	14	4.7	14	6.5
10	1/4	10mFE4**	23.8	34.9	15.0	17.7	32.0	19	5.5	17	7.8
12	1/4	12mFE4**	30.2	38.1	15.0	23.5	41.0	22	9.5	24	14.0
12	1/2	12mFE8**	30.2	41.3	19.8	23.5	41.0	22	9.5	24	21.7
20	3/4	20mFE12**	33.3	42.1	20.6	25.1	44.1	30	16.7	32	39.4

Male Stud Elbow



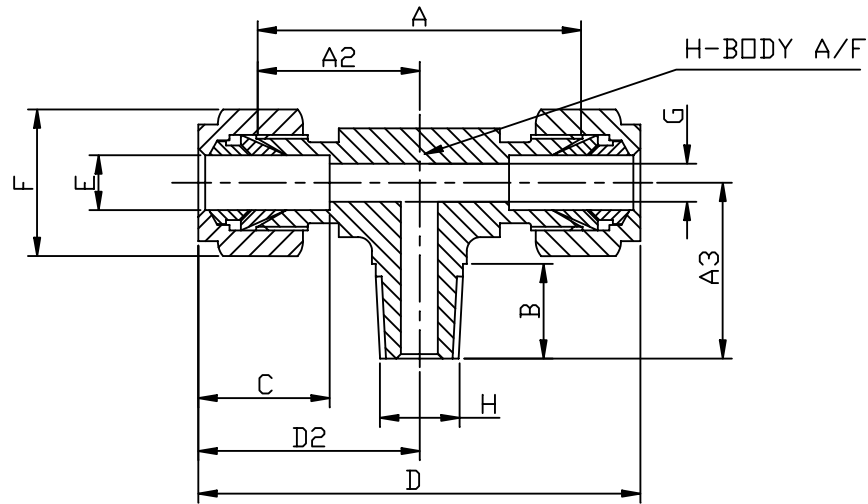
Fractional

E TUBE	H THREAD	PART No**	A	A2	B	C	D	F HEX	G	H A/F	Kg/100
1/8	1/8	2ME2**	19.1	19.1	9.5	13.5	28.6	11.1	2.4	12.7	2.7
3/16	1/8	3ME2**	19.8	19.1	9.5	14.3	27.8	12.7	3.2	12.7	2.8
1/4	1/8	4ME2**	20.6	19.1	9.5	15.1	28.2	14.3	4.8	12.7	2.9
1/4	1/4	4ME4**	20.6	23.8	14.3	15.1	28.2	14.3	4.8	12.7	3.4
1/4	3/8	4ME6**	22.4	26.2	14.3	15.1	29.7	14.3	4.8	17.5	5.2
1/4	1/2	4ME8**	24.4	33.0	19.1	15.1	31.8	14.3	4.8	20.6	5.9
3/8	1/4	6ME4**	23.0	25.4	14.3	16.7	30.6	17.5	7.1	14.3	5.2
3/8	3/8	6ME6**	23.0	28.6	14.3	16.7	30.6	17.5	7.1	14.3	5.9
3/8	1/2	6ME8**	25.9	33.0	19.1	16.8	33.3	17.5	7.1	20.6	7.5
1/2	1/4	8ME4**	25.9	28.2	14.2	22.9	36.1	22.2	7.1	20.6	8.9
1/2	3/8	8ME6**	25.0	27.4	14.3	23.0	35.3	22.2	8.7	17.5	9.5
1/2	1/2	8ME8**	25.0	33.3	19.1	23.0	35.3	22.2	10.3	17.5	11.2
5/8	1/2	10ME8**	27.0	34.1	19.1	23.8	36.5	25.4	11.1	23.8	12.9
3/4	1/2	12ME8**	29.8	33.3	19.1	24.6	39.7	28.6	11.1	23.8	15.1
3/4	3/4	12ME12**	29.8	36.9	19.1	24.6	39.7	28.6	15.9	23.8	18.3
1	3/4	16ME12**	35.7	42.1	19.1	31.4	48.8	38.1	15.9	31.8	30.9
1	1	16ME16**	36.83	46.5	19.1	31.2	49.0	38.1	22.4	34.9	32.5

Metric

E TUBE	H THREAD	PART No**	A	A2	B	C	D	G	F HEX	H A/F	Kg/100
4	1/8	4mME2**	19.8	19.5	9.5	14.5	28.0	2.8	13	13	2.9
6	1/8	6mME2**	20.6	19.5	9.5	16.1	28.8	4.7	14	13	3.4
6	1/4	6mME4**	20.6	23.8	10.3	16.1	28.8	4.7	14	13	3.9
6	3/8	6mME6**	22.4	26.2	14.2	15.3	29.8	4.8	14	17	5.3
6	1/2	6mME8**	24.4	33.0	19.1	15.3	31.8	4.8	14	21	5.8
8	1/4	8mME4**	22.2	25.4	14.3	16.9	30.4	6.3	16	13	5.3
8	3/8	8mME6**	23.1	26.2	14.2	16.2	30.6	6.4	16	17	5.7
10	1/4	10mME4**	23.8	25.4	14.3	17.7	32.0	7.9	19	14	5.7
10	3/8	10mME6**	23.8	28.6	14.3	17.7	32.0	7.9	19	14	6.6
10	1/2	10mME8**	25.9	33.0	19.1	17.2	33.5	7.9	19	17	9.6
12	1/4	12mME4**	25.9	28.2	14.2	22.8	36.0	7.1	22	17	8.8
12	3/8	12mME6**	25.0	27.4	14.3	23.5	35.8	8.7	22	17	9.6
12	1/2	12mME8**	26.2	33.3	19.1	23.5	37.0	9.5	22	17	11.8
16	1/2	16mME8**	27.0	34.1	19.1	25.1	37.8	12.7	25	24	13.0
20	1/2	20mME8**	33.3	34.1	19.1	25.1	44.1	12.7	30	24	16.2
20	3/4	20mME12**	33.3	42.1	19.1	25.1	44.1	16.7	30	24	19.0
25	3/4	25mME12**	35.7	42.1	19.1	31.8	48.4	18.3	38	32	30.9
25	1	25mME16**	36.8	46.5	23.9	31.3	49.1	21.8	38	32	32.5

Male Branch Tee



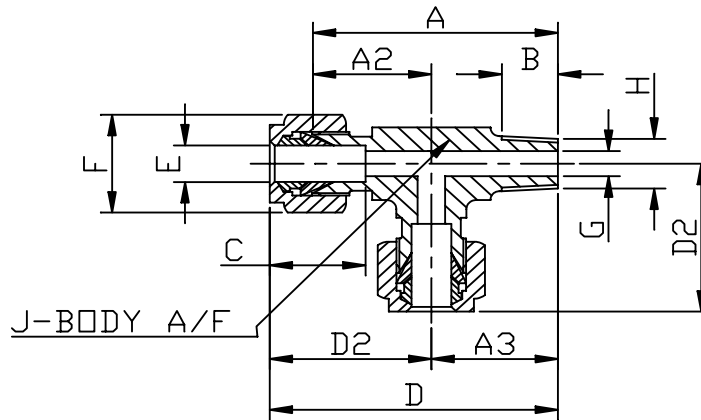
Fractional

E TUBE	H THREAD	PART No**	A	A2	A3	B	C	D	D2	F HEX	G	H A/F	Kg/100
1/4	1/8	4TTM2**	41.3	20.6	19.1	9.5	15.1	56.4	28.2	14.3	4.8	12.7	5.8
1/4	1/4	4TTM4**	42.9	21.3	24.6	14.3	15.1	57.9	29.0	14.3	4.8	12.7	6.8
3/8	1/4	6TTM4**	46.0	23.0	24.6	14.3	16.7	61.1	30.6	17.5	7.1	14.3	7.8
1/2	1/4	8TTM4**	50.0	25.0	27.4	14.3	23.0	70.6	35.3	22.2	4.8	17.5	12.0
1/2	3/8	8TTM6**	50.0	25.0	27.4	14.3	23.0	70.6	35.3	22.2	10.3	17.5	13.7
1/2	1/2	8TTM8**	60.3	30.2	34.9	19.1	23.0	81.0	40.5	22.2	10.3	17.5	22.3
5/8	1/2	10TTM8**	60.3	30.2	34.9	19.1	23.8	79.4	39.7	25.4	12.7	23.8	23.4
3/4	1/2	12TTM8**	59.5	29.8	36.9	19.1	21.8	79.4	39.7	28.9	15.9	23.8	22.8
3/4	3/4	12TTM12**	59.5	29.8	36.9	19.1	21.8	79.4	39.7	28.9	15.9	23.8	24.4
1	3/4	16TTM12**	71.4	35.7	40.1	19.1	31.4	97.6	48.8	38.1	22.2	31.8	42.4

Metric

E TUBE	H THREAD	PART No**	A	A2	A3	B	C	D	D2	F HEX	G	H A/F	Kg/100
6	1/8	6mTTM2**	41.3	21.6	19.1	9.5	16.1	57.4	28.7	14	4.7	13	5.2
6	1/4	6mTTM4**	42.8	21.4	24.6	14.3	16.1	59.2	29.6	14	4.7	13	6.7
10	1/4	10mTTM4**	47.6	23.8	24.6	14.3	17.7	64.0	32.0	19	7.9	14	7.1
12	3/8	12mTTM6**	50.0	25.0	27.4	14.3	23.5	71.6	35.8	22	9.5	17	14.4
12	1/2	12mTTM8**	60.4	30.2	34.9	19.1	23.5	82.0	41.0	22	9.5	24	23.9
16	1/2	16mTTM8**	60.4	30.2	34.9	19.1	25.1	82.0	41.0	25	12.7	24	23.4
20	1/2	20mTTM8**	71.4	35.7	34.9	19.1	25.1	93.0	46.5	30	16.7	32	22.8
20	3/4	20mTTM12**	71.4	35.7	41.2	19.1	25.1	93.0	46.5	30	16.7	32	24.4
25	3/4	25mTTM12**	71.4	35.7	41.2	19.1	31.8	96.8	48.4	38	16.7	32	42.0

Male Run Tee



Fractional

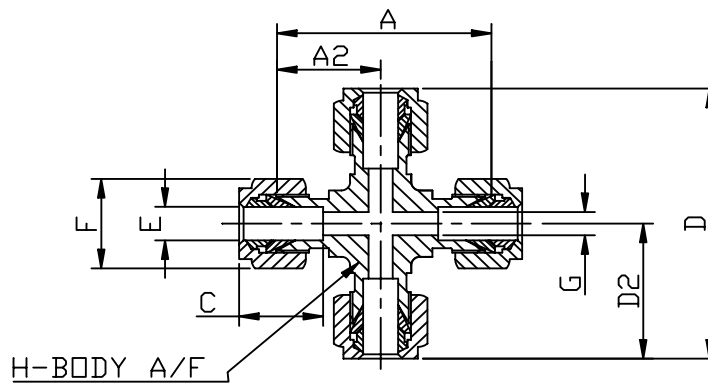
E TUBE	H THREAD	PART No**	A	A2	A3	B	C	D	D2	F HEX	G	J A/F	Kg/100
1/4	1/8	4TMT2**	39.7	20.6	19.1	9.5	15.1	47.3	28.2	14.3	4.8	12.7	5.4
1/4	1/4	4TMT4**	45.2	20.6	24.6	14.3	15.1	52.8	28.2	14.3	4.8	12.7	6.6
3/8	1/4	6TMT4**	47.6	23.0	24.6	14.3	16.7	55.2	30.6	17.5	7.1	14.3	7.8
1/2	3/8	8TMT6**	52.4	25.0	27.4	14.3	23.0	62.7	35.3	22.2	10.3	17.5	13.2
1/2	1/2	8TMT8**	64.3	30.2	34.1	19.1	23.0	74.6	40.5	22.2	10.3	17.5	23.0
5/8	1/2	10TMT8**	64.3	30.2	34.1	19.1	23.8	73.8	39.7	25.4	12.7	23.8	33.2
3/4	1/2	12TMT8**	69.9	31.8	38.1	19.1	24.6	79.8	41.7	28.9	15.9	23.8	27.0
3/4	3/4	12TMT12**	69.9	31.8	38.1	19.1	24.6	79.8	41.7	28.9	15.9	23.8	31.7

Metric

E TUBE	H THREAD	PART No**	A	A2	A3	B	C	D	D2	F HEX	G	J A/F	Kg/100
6	1/8	6mTMT2**	39.7	20.6	19.1	9.5	16.1	47.9	28.8	14	4.7	13	5.2
6	1/4	6mTMT4**	46.0	21.4	24.6	14.3	16.1	54.2	29.6	14	4.7	14	7.1
10	1/4	10mTMT4**	48.4	23.8	24.6	14.3	17.7	56.6	32.0	19	7.1	14	8.8
12	3/8	12mTMT6**	52.4	25.0	27.4	14.3	23.5	63.2	35.8	22	9.5	17	14.4
12	1/2	12mTMT8**	64.3	30.2	34.1	19.1	23.5	75.1	41.0	22	9.5	24	23.0
16	1/2	16mTMT8**	65.9	31.8	34.1	19.1	25.1	76.0	42.6	25	12.7	24	33.2
20	1/2	20mTMT8**	69.8	35.7	34.1	19.1	25.1	80.6	46.5	30	16.7	24	27.0
20	3/4	20mTMT12**	71.4	36.5	34.9	19.1	25.1	82.2	47.3	30	16.7	30	32.0

**Suffix for different threads: NPT, BSPT.

Equal Cross



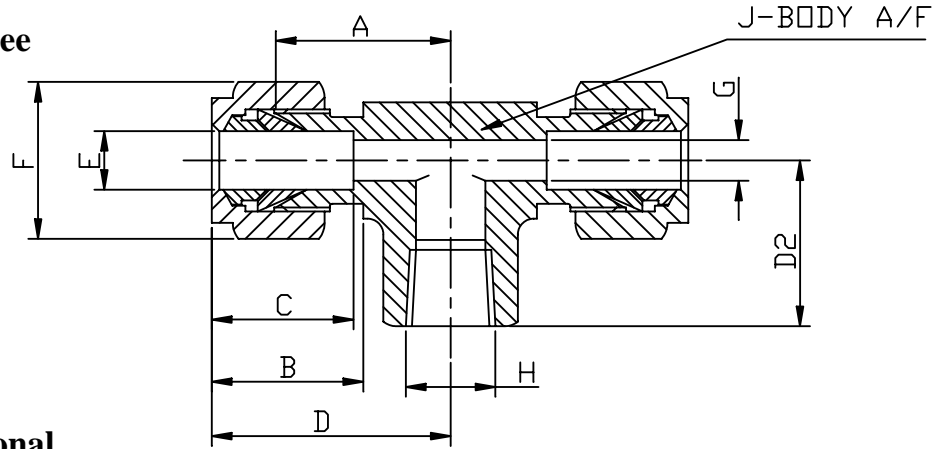
Fractional

E TUBE	PART No	A	A2	C	D	D2	F HEX	G	H A/F	Kg/100
1/8	2CR	38.1	19.1	13.5	53.2	26.6	11.1	2.4	12.7	8.0
3/16	3CR	39.7	19.8	14.3	54.0	26.7	12.7	3.2	12.7	9.0
1/4	4CR	41.3	20.6	15.1	56.4	28.2	14.3	4.8	12.7	9.6
5/16	5CR	44.5	22.2	16.7	61.1	30.6	15.9	6.4	14.3	9.8
3/8	6CR	46.0	23.0	16.7	61.1	30.6	17.5	7.1	14.3	11.4
1/2	8CR	49.2	25.0	23.0	70.6	35.3	22.2	10.3	15.9	20.1
5/8	10CR	53.9	27.0	23.8	73.0	36.5	25.4	12.7	23.8	35.9
3/4	12CR	63.5	31.8	24.6	83.3	41.7	28.6	15.9	23.8	37.9

Metric

E TUBE	PART No	A	A2	C	E	D2	F HEX	G	H A/F	Kg/100
4	4mCR	39.6	19.8	13.5	53.2	26.6	11	2.4	14	8.5
6	6mCR	41.2	20.6	16.1	57.6	28.8	14	4.7	14	8.9
8	8mCR	44.4	22.2	16.9	60.8	30.4	16	6.3	14	9.8
10	10mCR	47.6	23.8	17.7	64.0	32.0	19	7.9	14	13.6
12	12mCR	50.0	25.0	23.5	71.6	35.8	22	9.5	17	21.2
16	16mCR	54.0	27.0	25.1	75.6	37.8	24	12.7	24	35.0
20	20mCR	58.4	33.3	25.1	88.2	44.1	30	16.7	32	37.0

Female Branch Tee



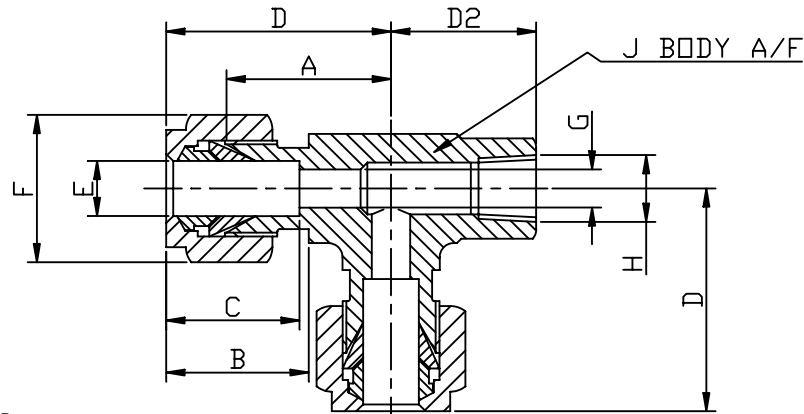
Fractional

E TUBE	H THREAD	PART No**	A	B	C	D	D2	F HEX	G	J A/F	Kg/100
1/8	1/8	2TTF2**	18.0	15.2	12.7	24.4	19.1	11.1	2.3	12.7	6.0
1/4	1/8	4TTF2**	19.6	17.8	15.2	26.9	19.1	14.3	4.8	12.7	6.0
1/4	1/4	4TTF4**	22.4	17.8	15.2	29.7	22.4	14.3	4.8	17.5	16.0
3/8	1/4	6TTF4**	23.9	19.3	16.8	31.2	22.4	17.5	7.1	17.5	16.0
1/2	3/8	8TTF6**	25.9	21.8	22.8	36.1	22.4	22.2	10.4	20.6	18.0
1/2	1/2	8TTF8**	28.7	21.8	22.8	38.9	28.4	22.2	10.4	25.4	34.0
5/8	1/2	10TTF8**	28.7	21.8	24.4	38.9	28.4	25.4	12.7	25.4	34.0
3/4	3/4	12TTF12**	34.5	21.8	24.4	44.7	31.8	28.6	15.7	31.8	48.0

Metric

E TUBE	H THREAD	PART No**	A	B	C	D	D2	F HEX	G	J A/F	Kg/100
6	1/8	6mTTF2**	19.6	17.7	15.3	27.0	19.0	14	4.8	12.7	6.0
6	1/4	6mTTF4**	22.4	17.7	15.3	29.8	22.4	14	4.8	17.5	6.0
8	1/8	8mTTF2**	22.4	18.6	16.2	29.9	19.0	16	6.4	15.9	16.0
8	1/4	8mTTF4**	23.1	18.6	16.2	30.6	22.4	16	6.4	17.5	16.0
10	1/4	10mTTF4**	25.9	19.5	17.2	33.5	22.4	19	7.9	20.6	18.0
12	1/4	12mTTF4**	25.9	22.0	22.8	36.0	22.4	22	9.5	20.6	34.0
12	3/8	12mTTF6**	25.9	22.0	22.8	36.0	22.4	22	9.5	20.6	34.0
16	1/2	16mTTF8**	28.7	22.0	24.4	38.8	28.4	25	12.7	25.4	48.0

Female Run Tee



Fractional

E TUBE	H THREAD	PART No**	A	B	C	D	D2	F HEX	G	J A/F	Kg/100
1/8	1/8	2TFT2**	18.0	15.2	12.7	24.4	19.1	11.1	2.3	12.7	6.0
1/4	1/8	4TFT2**	19.6	17.8	15.2	26.9	19.1	14.3	4.8	12.7	6.0
1/4	1/4	4TFT4**	22.4	17.8	15.2	29.7	22.4	14.3	4.8	17.5	16.0
3/8	1/4	6TFT4**	23.9	19.3	16.8	31.2	22.4	17.5	7.1	17.5	16.0
1/2	3/8	8TFT6**	25.9	21.8	22.8	36.1	22.4	22.2	10.4	20.6	18.0
1/2	1/2	8TFT8**	28.7	21.8	22.8	38.9	28.4	22.2	10.4	25.4	34.0

Metric

E TUBE	H THREAD	PART No**	A	B	C	D	D2	F HEX	G	J A/F	Kg/100
6	1/4	6mTFT4**	22.4	17.7	15.3	29.8	22.4	14	4.8	17.5	6.0
8	1/8	8mTFT2**	22.4	18.6	16.2	29.9	19.0	16	6.4	15.9	9.0
8	1/4	8mTFT4**	23.1	18.6	16.2	30.6	22.4	16	6.4	17.5	16.0
10	1/4	10mTFT4**	25.9	19.5	17.2	33.5	22.4	19	7.9	20.6	16.0
12	1/4	12mTFT4**	25.9	22.0	22.8	36.0	22.4	22	9.5	20.6	18.0
12	3/8	12mTFT6**	25.9	22.0	22.8	36.0	22.4	22	9.5	20.6	18.0

**Suffix for different threads:

NPT, BSPT, BSPP