

# Carpet Collection

- Each range represented to include:
  - Structure and format
  - Colour
  - Specification
  - Installation photography

# Adventurer



Environmental Profiles  
ENP 399bx, 399bw,  
399by & 399bz

**BRE Global (BREEAM):**

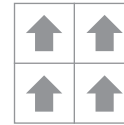
- 'A+' Retail (tile and PVC impervious)
- 'A+' Education (tile and PVC impervious)
- 'A+' Healthcare (tile and PVC impervious)



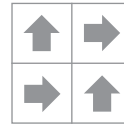
Nile Brown 25007

Specification:	Tile	PVC Impervious
Product Dimensions	500mm x 500mm	2 metres
Product Construction	Tufted Loop Pile	Tufted Loop Pile
Surface Yarn	100% Solution Dyed Nylon	100% Solution Dyed Nylon
Total Carpet Weight	4380 g/m <sup>2</sup>	4380 g/m <sup>2</sup>
Tufted Pile Weight	500 g/m <sup>2</sup>	500 g/m <sup>2</sup>
Primary Backing	Non-woven	Non-woven
Secondary Backing	Bitumen	PVC
Total Carpet Thickness	6.2mm	6.9mm

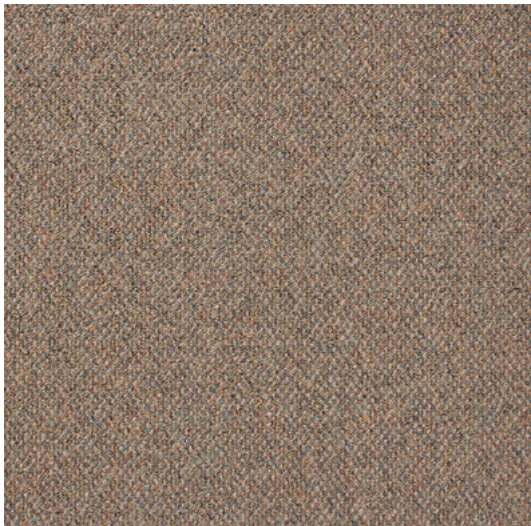
For full specification information visit [www.gradusworld.com](http://www.gradusworld.com)



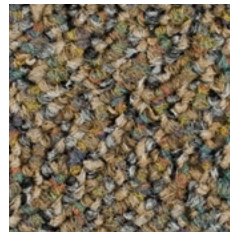
Broadloom



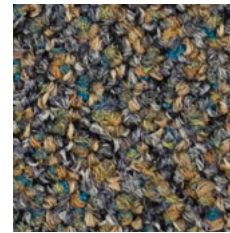
Quarter Turn



500mm x 500mm View



Sandstorm 25017  
LRV 13.98



Cliff Shadow 25006  
LRV 10.81



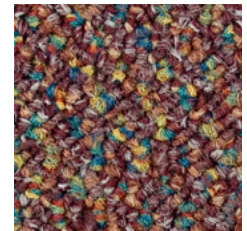
Nile Brown 25007  
LRV 9.03



Blue Mountain 25008  
LRV 9.70



Lunar Gray 25003  
LRV 9.82



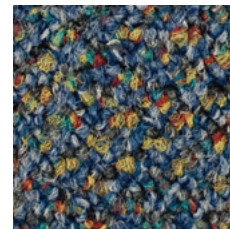
Red Sands 25015  
LRV 8.80

### Samples

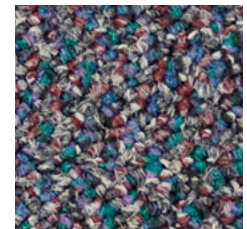
An accurate colour match can only be achieved by requesting the relevant product sample(s) from Gradus Technical Support on 01625 428922.



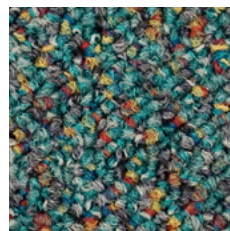
Kalahari 25013  
LRV 9.28



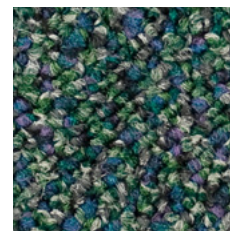
Seafarer 25012  
LRV 10.67



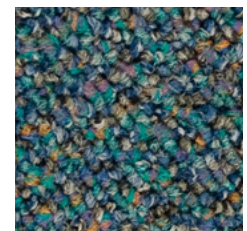
Lost Horizon 25016  
LRV 7.42



Gulf Stream 25009  
LRV 10.50



Oregon Forest 25010  
LRV 7.87



Aquarelle 25011  
LRV 10.94

# Bodega



Environmental Profiles  
ENP 399ca, 399cb & 399cd

**BRE Global (BREEAM):**

- 'A+' Healthcare (tile, broadloom and Aquabac impervious)
- 'A+' Education (tile, broadloom and Aquabac impervious)
- 'A+' Commercial Office (broadloom)



Soft Sage 03825

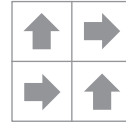
Specification:	Tile	Broadloom	PVC Impervious *	Aquabac Impervious
Product Dimensions	500mm x 500mm	4 metres	2 metres	2 metres or 4 metres *
Product Construction	Tufted Loop Pile	Tufted Loop Pile	Tufted Loop Pile	Tufted Loop Pile
Surface Yarn	100% Polypropylene	100% Polypropylene	100% Polypropylene	100% Polypropylene
Total Carpet Weight	4500 g/m <sup>2</sup>	1906 g/m <sup>2</sup>	3729 g/m <sup>2</sup>	2570 g/m <sup>2</sup>
Tufted Pile Weight	678 g/m <sup>2</sup>	678 g/m <sup>2</sup>	678 g/m <sup>2</sup>	678 g/m <sup>2</sup>
Primary Backing	Non-woven	Woven Polypropylene	Non-woven	Woven Polypropylene
Secondary Backing	Bitumen	Woven Polypropylene	PVC	Aquabac
Total Carpet Thickness	6mm	5mm	5mm	6.5mm

For full specification information visit [www.gradusworld.com](http://www.gradusworld.com)

\* Minimum quantity 300 sq metres, a maximum of 5% overage applies.



Broadloom



Quarter Turn



Tile only



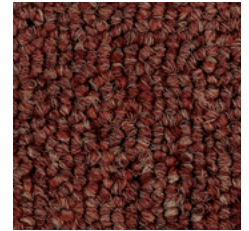
500mm x 500mm View



Oatmeal 03807  
LRV 16.72



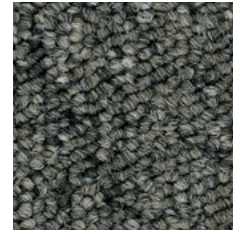
Barley 03816  
LRV 15.94



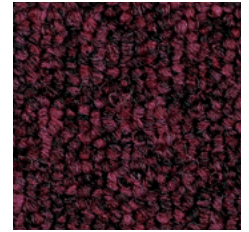
Redwood 03820  
LRV 8.34



Brindle 03811  
LRV 13.46



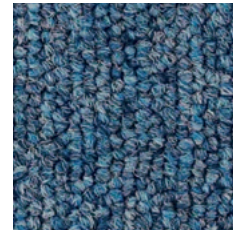
Soft Sage 03825  
LRV 14.34



Damson 03822  
LRV 4.09



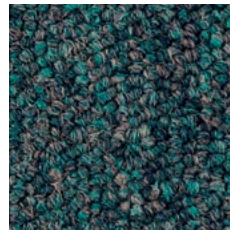
Jade 03824  
LRV 12.27



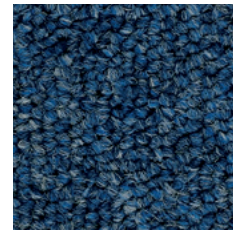
Cosmos Blue 03804  
LRV 10.49



Anthracite 03808  
LRV 9.05



Mermaid 03812  
LRV 8.67



Marine Blue 03823  
LRV 7.46



Jet 03827  
LRV 2.26

### Samples

An accurate colour match can only be achieved by requesting the relevant product sample(s) from Gradus Technical Support on 01625 428922.

# Brickworks



Environmental Profiles  
ENP 442b

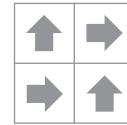
**BRE Global (BREEAM):**  
'A+' Retail (tile)



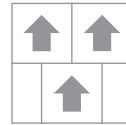
Milldale 06705

Specification:	Tile
Product Dimensions	500mm x 500mm
Product Construction	Tufted Textured Pattern Loop Pile
Surface Yarn	100% INVISTA™ Polyamide 6.6 ASDN™
Total Carpet Weight	4290 g/m <sup>2</sup>
Tufted Pile Weight	800 g/m <sup>2</sup>
Primary Backing	Non-woven
Secondary Backing	Bitumen
Total Carpet Thickness	6.5mm

For full specification information visit [www.gradusworld.com](http://www.gradusworld.com)



Quarter Turn



Brick Bond



500mm x 500mm View



Oakthorpe 06701  
LRV 17.92



Lindum 06702  
LRV 10.62



Ashby 06704  
LRV 13.71



Ironstone 06707  
LRV 10.02



Braemar 06703  
LRV 5.24



Longville 06713  
LRV 4.93



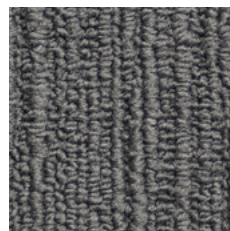
Milldale 06705  
LRV 7.06



Thoresby 06706  
LRV 4.10



Himley 06709  
LRV 3.68



Brunswick 06708  
LRV 8.12



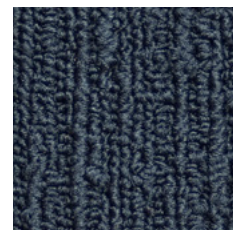
Tonbridge 06711  
LRV 4.98



Onyx 06714  
LRV 2.18



Brecken 06710  
LRV 7.06



Holbrook 06712  
LRV 3.75

### Samples

An accurate colour match can only be achieved by requesting the relevant product sample(s) from Gradus Technical Support on 01625 428922.



### Related products

- Cityscene - see page 34
- Skyline - see page 58
- Emphasis - see page 36

# Cityscene



Environmental Profiles  
ENP 433b

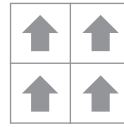
**BRE Global (BREEAM):**  
'A+' Retail (tile)



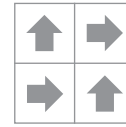
Granite 06109

Specification:	Tile
Product Dimensions	500mm x 500mm
Product Construction	Tufted Loop Pile
Surface Yarn	100% INVISTA™ Polyamide 6.6 DSDN™
Total Carpet Weight	4490 g/m <sup>2</sup>
Tufted Pile Weight	650 g/m <sup>2</sup>
Primary Backing	Non-woven
Secondary Backing	Bitumen
Total Carpet Thickness	6mm

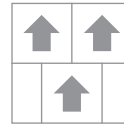
For full specification information visit [www.gradusworld.com](http://www.gradusworld.com)



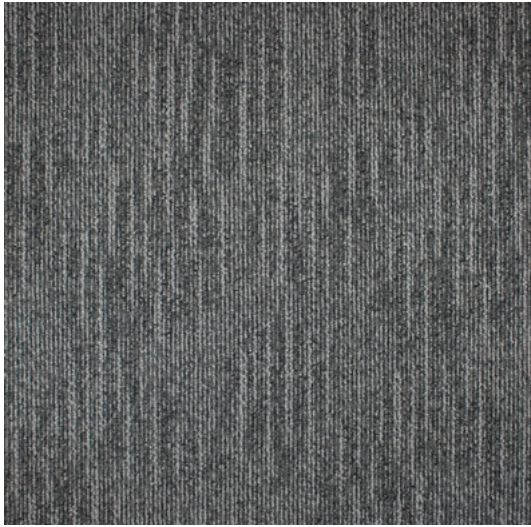
Broadloom



Quarter Turn



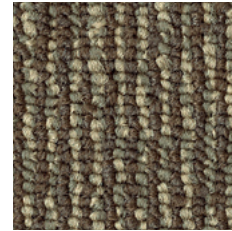
Brick Bond



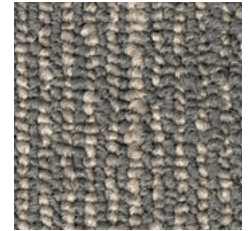
500mm x 500mm View



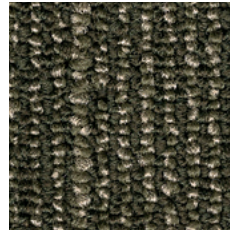
Caramel 06102  
LRV 14.94



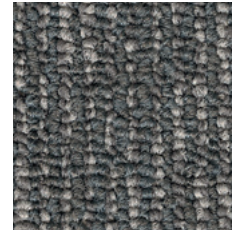
Willow 06104  
LRV 12.02



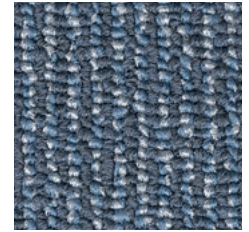
Tin 06103  
LRV 16.93



Ivy 06107  
LRV 9.63



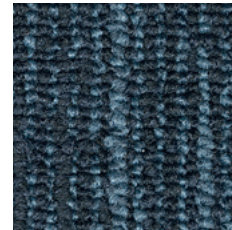
Shale 06106  
LRV 11.22



Ice 06105  
LRV 11.73



Raffia 06101  
LRV 18.73



Ocean 06108  
LRV 6.26



Granite 06109  
LRV 10.83

### Samples

An accurate colour match can only be achieved by requesting the relevant product sample(s) from Gradus Technical Support on 01625 428922.



#### Related product

Brickworks - see page 32  
Skyline - see page 58

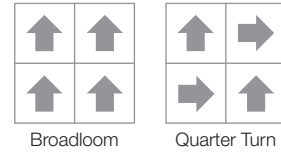
# Emphasis



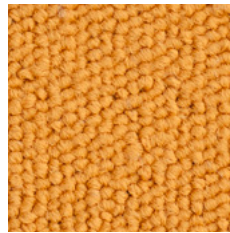
Emphasis with SqMile - Westminster 01315

Specification:	Loop Tile	Cut Tile
Product Dimensions	500mm x 500mm	500mm x 500mm
Product Construction	Tufted Loop Pile	Tufted Cut Pile
Surface Yarn	100% Aquafil Alto Chroma SDN	
Total Carpet Weight	4585 g/m <sup>2</sup>	4700 g/m <sup>2</sup>
Tufted Pile Weight	615 g/m <sup>2</sup>	750 g/m <sup>2</sup>
Primary Backing	Non-woven	Non-woven
Secondary Backing	Bitumen	Bitumen
Total Carpet Thickness	6.8mm	7.5mm

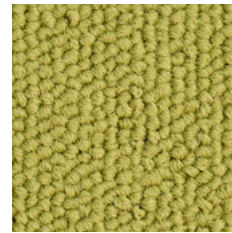
For full specification information visit [www.gradusworld.com](http://www.gradusworld.com)



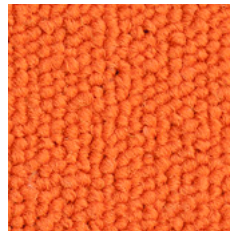
500mm x 500mm View



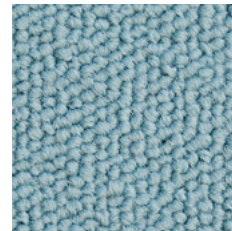
Gold      Loop Pile 101  
Cut Pile 777



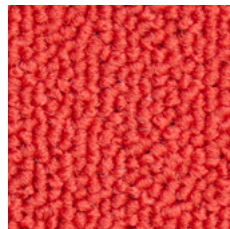
Green      Loop Pile 104  
Cut Pile 444



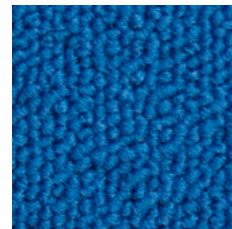
Orange      Loop Pile 102  
Cut Pile 666



Sky      Loop Pile 105  
Cut Pile 333



Red      Loop Pile 103  
Cut Pile 555



Blue      Loop Pile 106  
Cut Pile 222



Grey      Loop Pile 107  
Cut Pile 111

#### LRV's

Gold  
Loop Pile 101 | LRV 25.24  
Cut Pile 777 | LRV 24.85

Orange  
Loop Pile 102 | LRV 16.36  
Cut Pile 666 | LRV 15.31

Red  
Loop Pile 103 | LRV 7.75  
Cut Pile 555 | LRV 7.38

Green  
Loop Pile 104 | LRV 18.50  
Cut Pile 444 | LRV 18.10

Sky  
Loop Pile 105 | LRV 24.46  
Cut Pile 333 | LRV 24.77

Blue  
Loop Pile 106 | LRV 4.93  
Cut Pile 222 | LRV 4.56

Grey  
Loop Pile 107 | LRV 1.50  
Cut Pile 111 | LRV 1.30

#### Samples

An accurate colour match can only be achieved by requesting the relevant product sample(s) from Gradus Technical Support on 01625 428922.



#### Complementary Greys

SqMile - see page 62  
Euston 01314  
Westminster 01315  
Farringdon 01310

Stratus II - see page 64  
Storm Surge 06504  
Jet Stream 06506

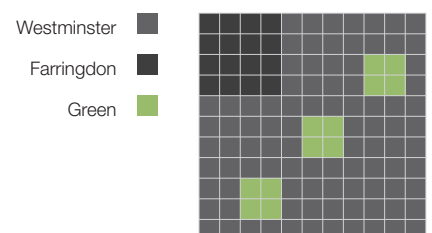
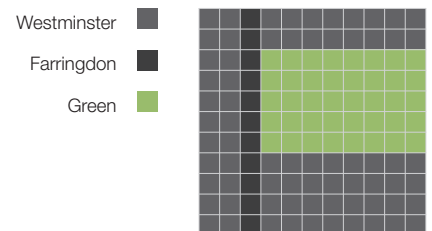
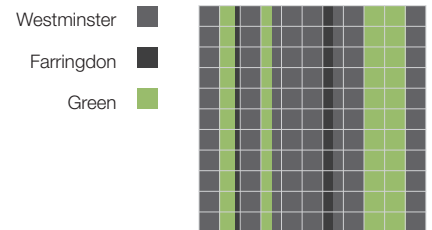
Brickworks - see page 32  
Tonbridge 06711  
Onyx 06714

Cityscene - see page 34  
Granite 06109  
Shale 06106

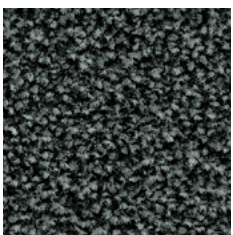
Installation  
Example



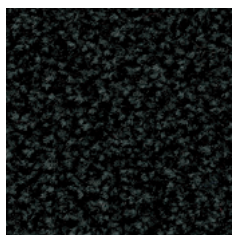
**Floor designs**



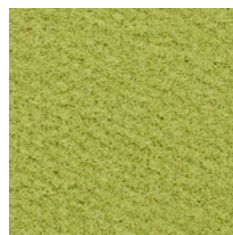
**SqMile with Emphasis**



Westminster 01315  
 SqMile



Farringdon 01310  
 SqMile

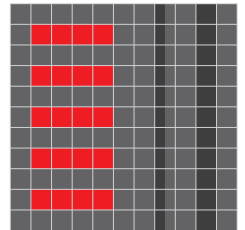


Green Cut Pile 444  
 Emphasis

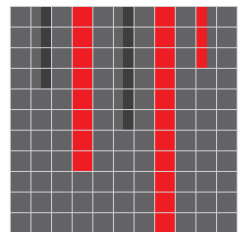


**Floor designs**

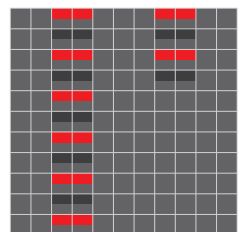
- Westminster
- Farringdon
- Red



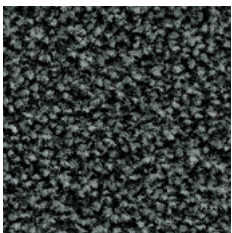
- Westminster
- Farringdon
- Red



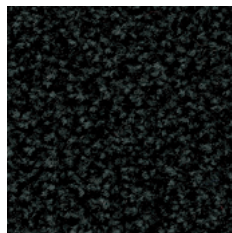
- Westminster
- Farringdon
- Red



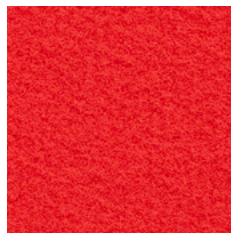
**SqMile with Emphasis**



Westminster 01315  
SqMile



Farringdon 01310  
SqMile



Red 555  
Emphasis