

Freeway



Environmental Profiles
ENP 399ci

BRE Global (BREEAM):
'A+' Healthcare (Aquabac impervious)
'A+' Education (Aquabac impervious)

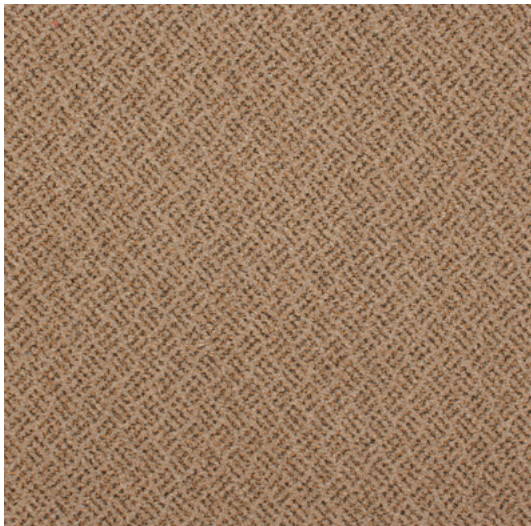


Old Stone 03015

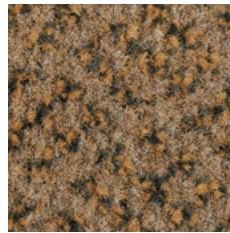
Specification:	Broadloom *	Aquabac Impervious
Product Dimensions	4 metres	2 metres or 4 metres *
Product Construction	Tufted Cut Pile	Tufted Cut Pile
Surface Yarn	100% Polypropylene	100% Polypropylene
Total Carpet Weight	2050 g/m ²	2575 g/m ²
Tufted Pile Weight	814 g/m ²	814 g/m ²
Primary Backing	Woven Polypropylene	Woven Polypropylene
Secondary Backing	Woven Polypropylene	Aquabac
Total Carpet Thickness	6mm	9mm

For full specification information visit www.gradusworld.com

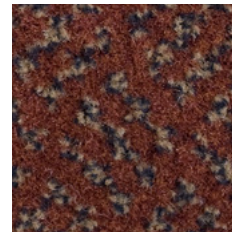
* 4 metres, minimum quantity 300 sq metres, a maximum of 5% overage applies.



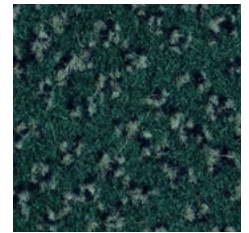
500mm x 500mm View



Old Stone 03015
LRV 11.11



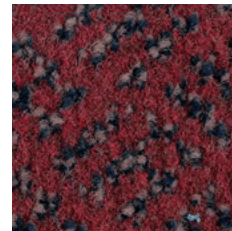
Burnt Orange 03023
LRV 4.81



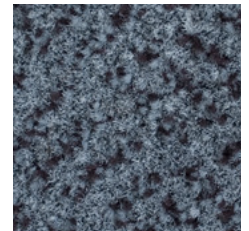
Forest Fern 03026
LRV 3.37



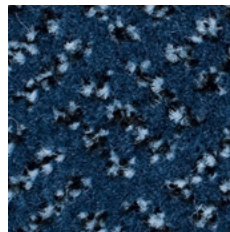
Mulled Wine 03024
LRV 3.73



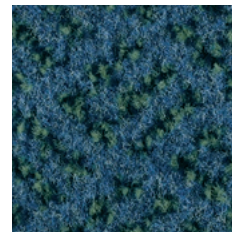
Cherry Red 03018
LRV 5.30



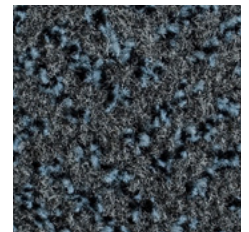
Iron Tonic 03029
LRV 9.42



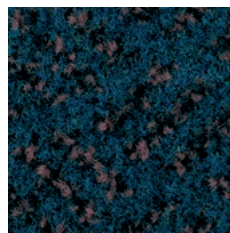
Indigo Blue 03027
LRV 3.88



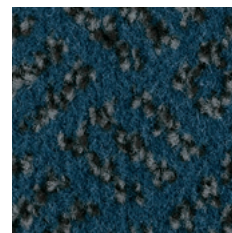
Fern Blue 03004
LRV 7.42



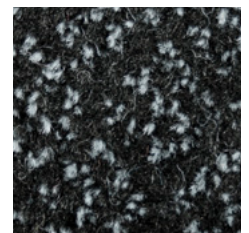
Carbon Haze 03030
LRV 5.87



Thunder Cloud 03008
LRV 3.93



Sea Breeze 03013
LRV 5.66



Black Pepper 03021
LRV 2.51

Samples

An accurate colour match can only be achieved by requesting the relevant product sample(s) from Gradus Technical Support on 01625 428922.

Genus & Volnay



Environmental Profiles
ENP 399ck, 399cl, 399cn,
399dj, 399dk & 399dm

BRE Global (BREEAM):

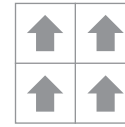
- 'A+' Commercial Office (tile and broadloom)
- 'A+' Education (tile and broadloom)
- 'A+' Healthcare (tile, broadloom and PVC impervious)



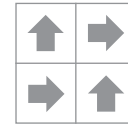
Cornfield 00225

Specification:	Tile	Broadloom	PVC Impervious
Product Dimensions	500mm x 500mm	4 metres	2 metres
Product Construction	Tufted Cut Pile	Tufted Cut Pile	Tufted Cut Pile
Surface Yarn	100% Marquésa SD	100% Marquésa SD	100% Marquésa SD
Total Carpet Weight	5250 g/m ²	2366 g/m ²	4605 g/m ²
Tufted Pile Weight	1085 g/m ²	1085 g/m ²	1085 g/m ²
Primary Backing	Non-woven	Woven Polypropylene	Non-woven
Secondary Backing	Bitumen	Woven Polypropylene	PVC
Total Carpet Thickness	9mm	8mm	8mm

For full specification information visit www.gradusworld.com



Broadloom



Quarter Turn

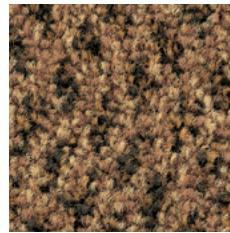


Tile only

Genus



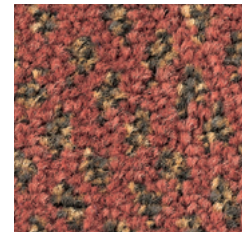
500mm x 500mm View



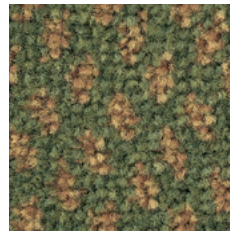
Cornfield 00225
LRV 17.44



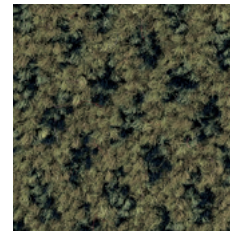
Beachwood 00245
LRV 11.76



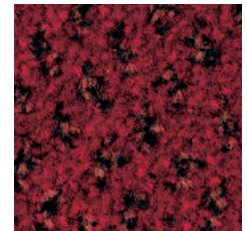
Mexicana 00227
LRV 7.91



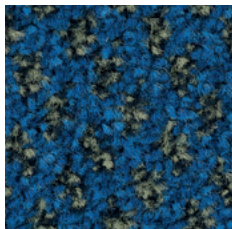
Cool Lime 00241
LRV 13.70



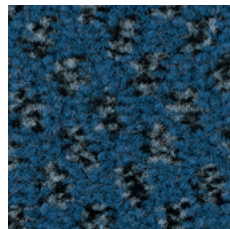
Olive 00242
LRV 7.22



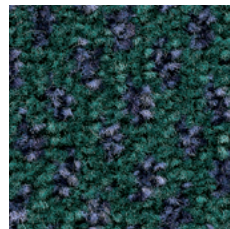
Rich Red 00220
LRV 4.45



Simply Sapphire 00238
LRV 5.06



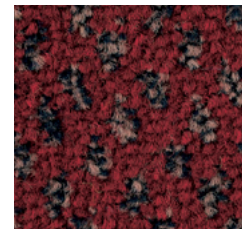
Winter Fjord 00216
LRV 5.46



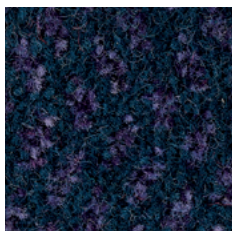
Thistle 00215
LRV 6.53



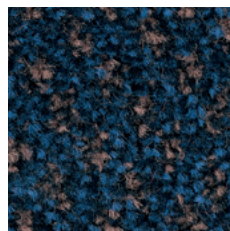
Evergreen 00243
LRV 4.73



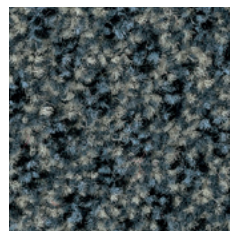
Ancient Ruby 00235
LRV 3.65



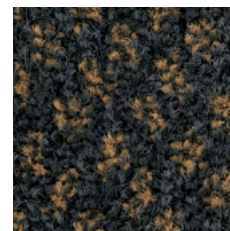
Midnight Mauve 00223
LRV 3.98



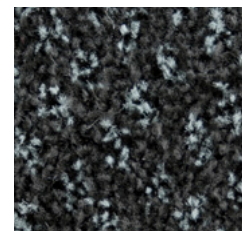
Lagoon 00240
LRV 3.58



Black Forest 00209
LRV 12.15



Graphite Storm 00239
LRV 5.43

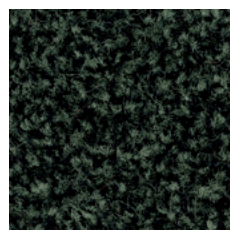


Saturn 00244
LRV 5.15

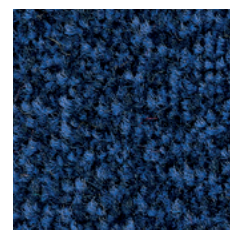
Volnay



Natural Straw 00318
LRV 21.68



Camouflage 00314
LRV 5.26



Azurite Blue 00322
LRV 2.84



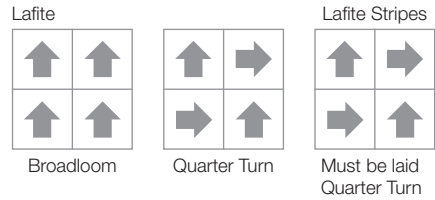
Charcoal 00324
LRV 2.75



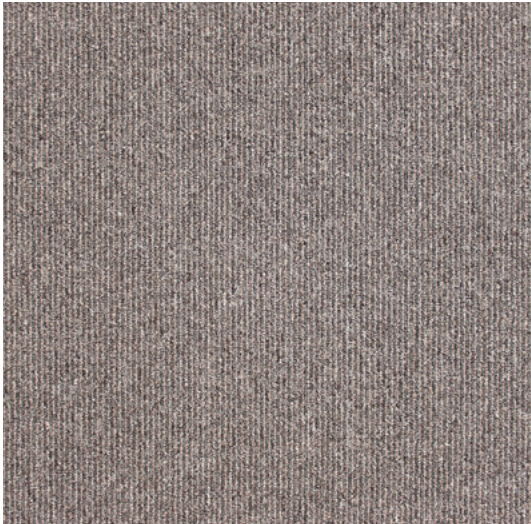
Lafite Stripes - Toulouse 06810 and Lafite - Belfort 06806

Specification:	Tile
Product Dimensions	500mm x 500mm
Product Construction	Tufted Loop Pile
Surface Yarn	100% Aquafil Solution Dyed Nylon
Total Carpet Weight	4375 g/m ²
Tufted Pile Weight	500 g/m ²
Primary Backing	Non-woven
Secondary Backing	Bitumen
Total Carpet Thickness	6.8mm

For full specification information visit www.gradusworld.com



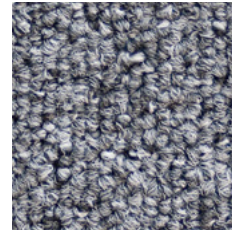
Lafite



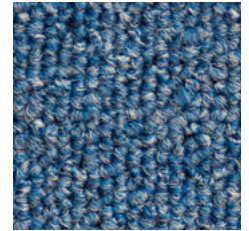
500mm x 500mm View



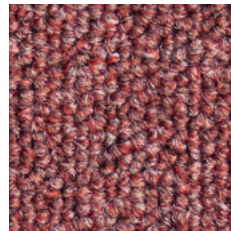
Ciron 06801
LRV 11.13



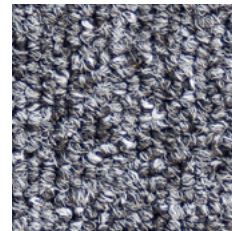
Maine 06804
LRV 11.72



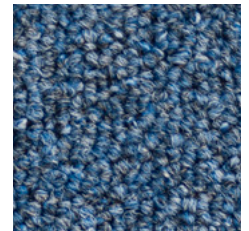
Loire 06807
LRV 7.49



Bordeaux 06802
LRV 6.58



Rouen 06805
LRV 9.61



Tarn 06808
LRV 6.50



Marseille 06803
LRV 7.44



Belfort 06806
LRV 5.92



Sevrans 06809
LRV 6.34

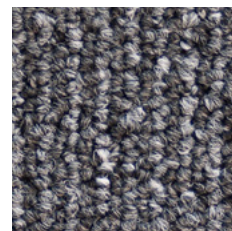
Samples

An accurate colour match can only be achieved by requesting the relevant product sample(s) from Gradus Technical Support on 01625 428922.

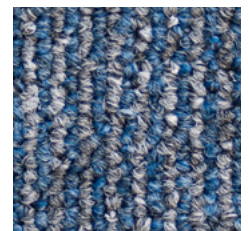
Lafite Stripes



Toulouse 06810
LRV 7.94



Maronne 06811
LRV 8.63



Lyon 06812
LRV 8.88

Latour



Environmental Profiles
ENP 399co

BRE Global (BREEAM):

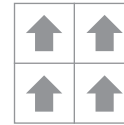
- 'A+' Commercial Office (tile)
- 'A+' Education (tile)
- 'A+' Healthcare (tile)



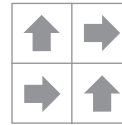
Latour - Wansdyke 03410 and Latour Stripes - Stange 06009

Specification:	Tile
Product Dimensions	500mm x 500mm
Product Construction	Tufted loop pile
Surface Yarn	100% Meraklon BCF Polypropylene
Total Carpet Weight	4400 g/m ²
Tufted Pile Weight	543 g/m ²
Primary Backing	Non-woven
Secondary Backing	Bitumen
Total Carpet Thickness	6.8mm

For full specification information visit www.gradusworld.com



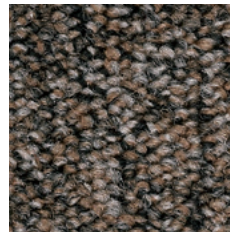
Broadloom



Quarter Turn



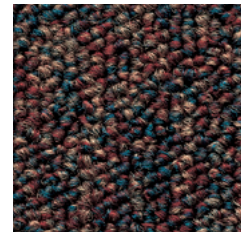
500mm x 500mm View



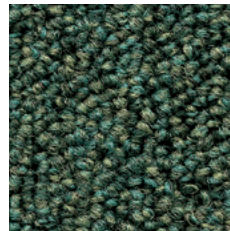
Ravenstone 03422
LRV 13.36



Glandford 03405
LRV 6.92



Wyre 03402
LRV 9.49



Cannock 03408
LRV 11.31



Matterhorn 03423
LRV 7.34



Cheviot 03401
LRV 5.19

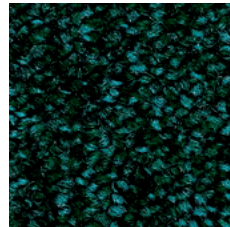
Samples

An accurate colour match can only be achieved by requesting the relevant product sample(s) from Gradus Technical Support on 01625 428922.

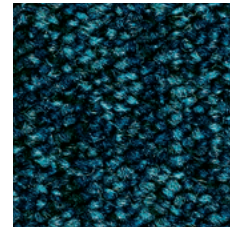


Related products

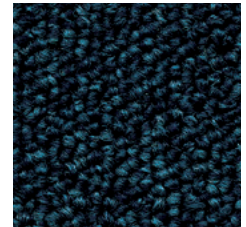
Latour Stripes - see page 48



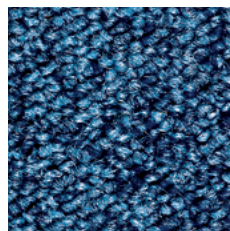
Glenavon 03417
LRV 2.45



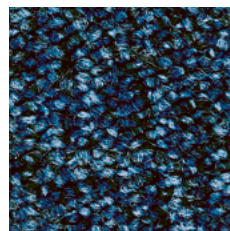
Niagara 03416
LRV 6.32



Scafell 03415
LRV 4.54



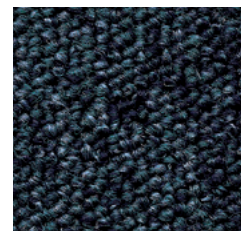
Derwent 03418
LRV 10.93



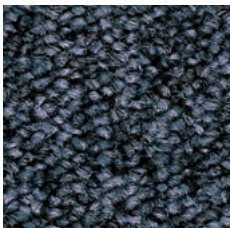
Coniston 03420
LRV 7.04



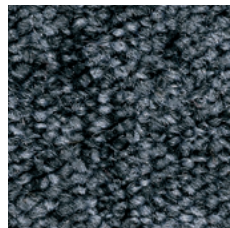
Langdale 03411
LRV 10.92



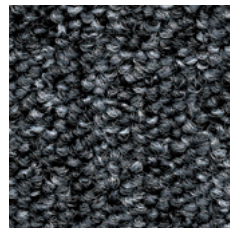
Wansdyke 03410
LRV 4.89



Torridon 03419
LRV 9.11



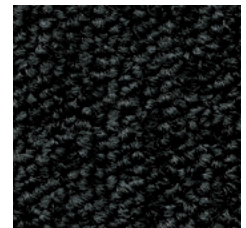
Howden 03421
LRV 10.37



Arfon 03404
LRV 8.74



Dovedale 03406
LRV 7.24



Cairngorm 03414
LRV 3.98

Latour Stripes



Environmental Profiles
ENP 399cp

BRE Global (BREEM):

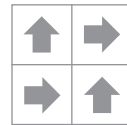
- 'A+' Commercial Office (tile)
- 'A+' Education (tile)
- 'A+' Healthcare (tile)



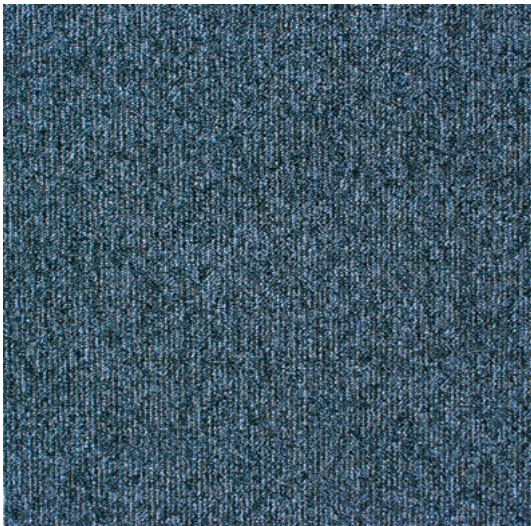
Latour Stripes - Stanage 06009 and Latour - Wansdyke 03410

Specification:	Tile
Product Dimensions	500mm x 500mm
Product Construction	Tufted Loop Pile
Surface Yarn	100% Meraklon BCF Polypropylene
Total Carpet Weight	4400 g/m ²
Tufted Pile Weight	543 g/m ²
Primary Backing	Non-woven
Secondary Backing	Bitumen
Total Carpet Thickness	6.8mm

For full specification information visit www.gradusworld.com



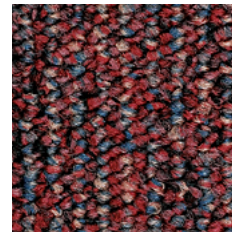
Quarter Turn



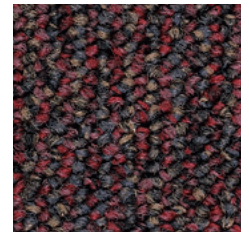
500mm x 500mm View



Pebbles 06002
LRV 7.62



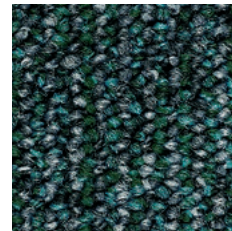
Talmine 06010
LRV 3.26



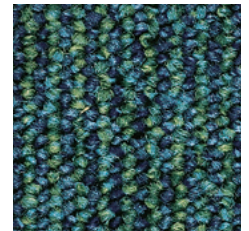
Wetheral 06008
LRV 3.62



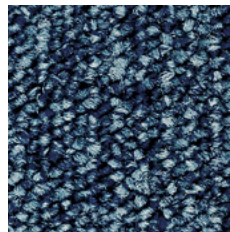
Morden 06003
LRV 7.59



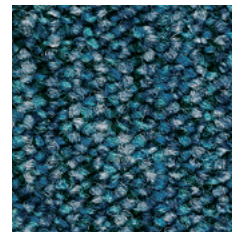
Ulverston 06001
LRV 3.34



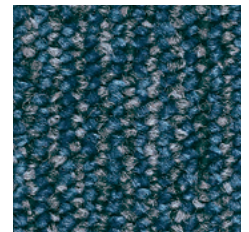
Grasmere 06006
LRV 8.08



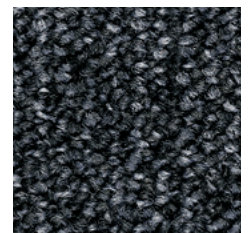
Stange 06009
LRV 4.72



Rivelin 06007
LRV 4.46



Staffin 06004
LRV 3.67



Alston 06005
LRV 6.45

Samples

An accurate colour match can only be achieved by requesting the relevant product sample(s) from Gradus Technical Support on 01625 428922.



Related products

Latour - see page 46