

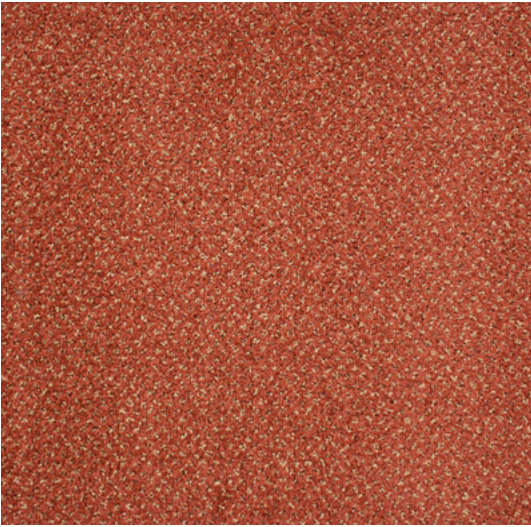
Minerva



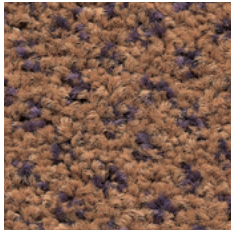
Warm Sienna 04603

Specification:	Aquabac Impervious
Product Dimensions	4 metres
Product Construction	Tufted Cut Pile
Surface Yarn	100% Polypropylene
Total Carpet Weight	2900 g/m ²
Tufted Pile Weight	950 g/m ²
Primary Backing	Woven Polypropylene
Secondary Backing	Aquabac
Total Carpet Thickness	11mm

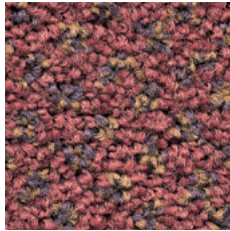
For full specification information visit www.gradusworld.com



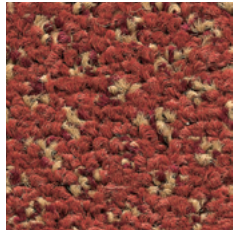
500mm x 500mm View



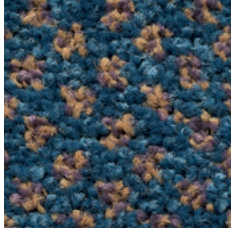
Caramel 04601
LRV 17.01



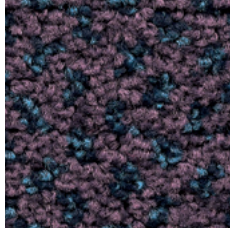
Watermelon 04602
LRV 11.27



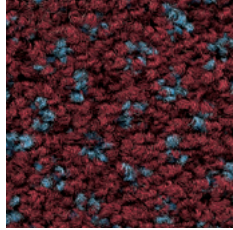
Warm Sienna 04603
LRV 7.72



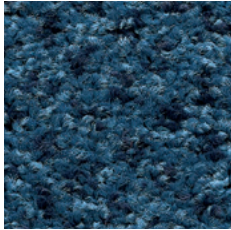
Summer Sky 04607
LRV 11.63



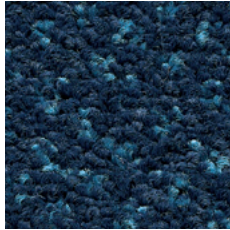
Heather 04606
LRV 7.92



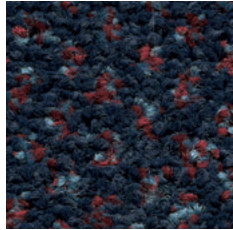
Black Cherry 04605
LRV 3.87



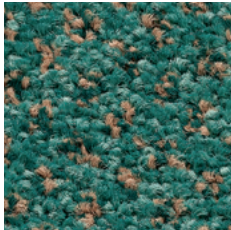
Bermuda Blue 04608
LRV 8.83



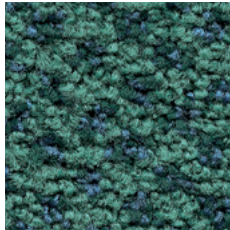
Ocean Wave 04612
LRV 3.40



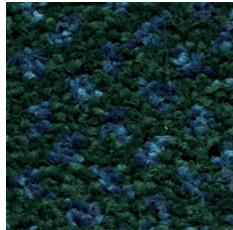
Majestic Blue 04610
LRV 3.99



Lily Pad 04604
LRV 13.84



Sea Grass 04609
LRV 12.65



Rain Forest 04611
LRV 4.31

Samples

An accurate colour match can only be achieved by requesting the relevant product sample(s) from Gradus Technical Support on 01625 428922.

Pacific Loop



Environmental Profiles
ENP 399cq & 399cs

BRE Global (BREEAM):

- 'A+' Healthcare (broadloom)
- 'A+' Education (broadloom and Aquabac impervious)
- 'A+' Commercial Office (broadloom)

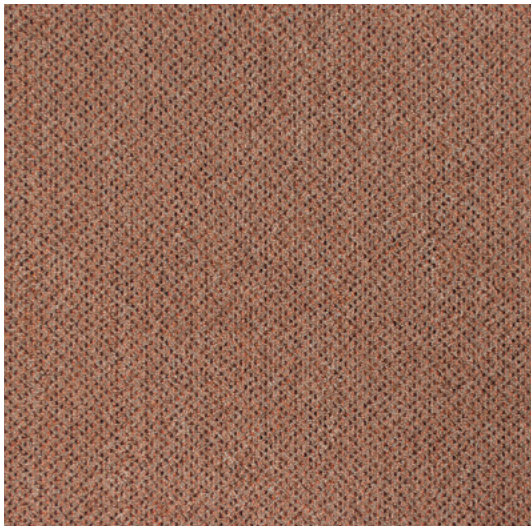


Beach 06302

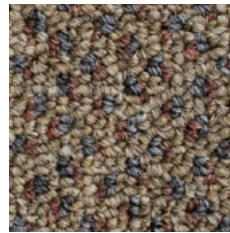
Specification:	Broadloom	Aquabac Impervious	PVC Impervious *
Product Dimensions	4 metres	2 metres or 4 metres *	2 metres
Product Construction	Tufted Loop Pile	Tufted Loop Pile	Tufted Loop Pile
Surface Yarn	100% Polypropylene	100% Polypropylene	100% Polypropylene
Total Carpet Weight	2000 g/m ²	2700 g/m ²	3850 g/m ²
Tufted Pile Weight	813 g/m ²	813 g/m ²	813 g/m ²
Primary Backing	Woven Polypropylene	Woven Polypropylene	Non-woven
Secondary Backing	Woven Polypropylene	Aquabac	PVC
Total Carpet Thickness	6mm	7mm	7mm

For full specification information visit www.gradusworld.com

* Minimum quantity 300 sq metres, a maximum of 5% overage applies.



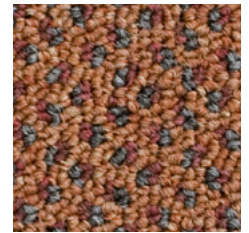
500mm x 500mm View



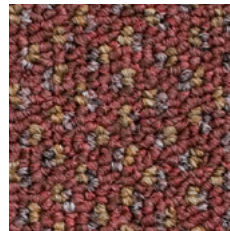
Sand 06301
LRV 12.63



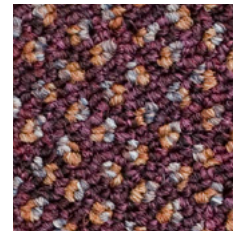
Beach 06302
LRV 9.30



Starfish 06303
LRV 11.02



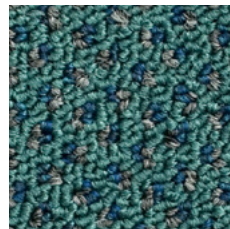
Coral 06304
LRV 7.41



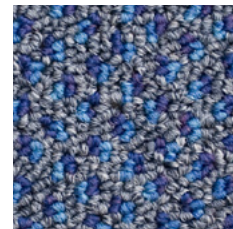
Anemone 06307
LRV 6.13



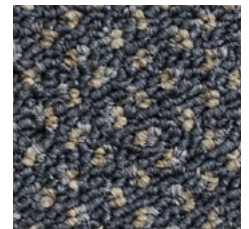
Kelp 06305
LRV 5.47



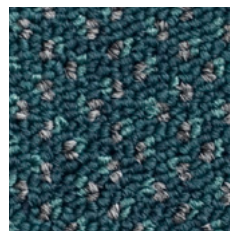
Seaweed 06312
LRV 7.41



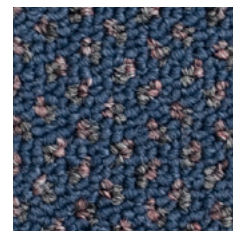
Surf 06311
LRV 9.13



Dolphin 06318
LRV 9.23



Turtle 06314
LRV 5.28



Ocean 06309
LRV 6.56



Urchin 06319
LRV 5.34

Samples

An accurate colour match can only be achieved by requesting the relevant product sample(s) from Gradus Technical Support on 01625 428922.

Predator



Environmental Profiles
ENP 399cu & 399cv

BRE Global (BREEAM):

- 'A+' Commercial Office (broadloom)
- 'A+' Education (tile and broadloom)
- 'A+' Healthcare (tile)

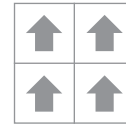


Fox 03306

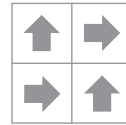
Specification:	Tile	Broadloom *
Product Dimensions	500mm x 500mm	4 metres
Product Construction	Tufted Loop Pile	Tufted Loop Pile
Surface Yarn	100% Aquafil Nylon	100% Aquafil Nylon
Total Carpet Weight	4400 g/m ²	1753 g/m ²
Tufted Pile Weight	525 g/m ²	525 g/m ²
Primary Backing	Non-woven	Woven Polypropylene
Secondary Backing	Bitumen	Woven Polypropylene
Total Carpet Thickness	6.5mm	5.5mm

For full specification information visit www.gradusworld.com

* Minimum quantity 300 sq metres, a maximum of 5% overage applies.



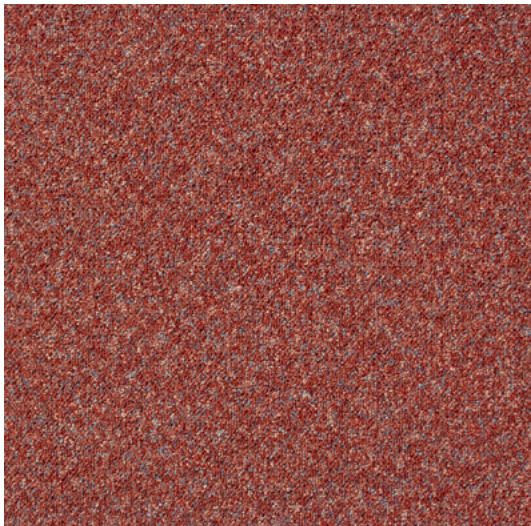
Broadloom



Quarter Turn



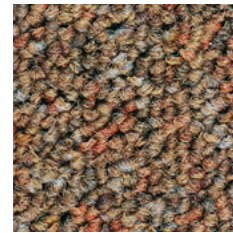
Tile only



500mm x 500mm View



Merlin 03310
LRV 16.00



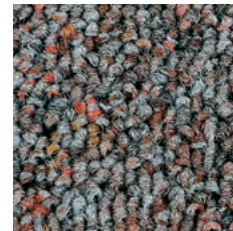
Hyena 03315
LRV 9.64



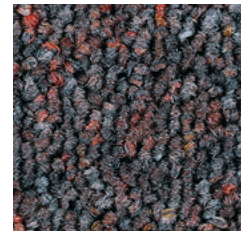
Puma 03301
LRV 8.07



Fox 03306
LRV 7.20



Vulture 03319
LRV 9.63



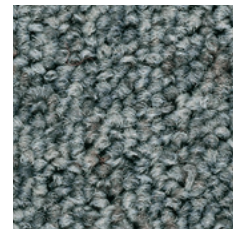
Tarantula 03318
LRV 2.31

Samples

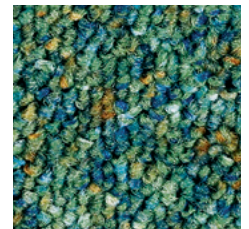
An accurate colour match can only be achieved by requesting the relevant product sample(s) from Gradus Technical Support on 01625 428922.



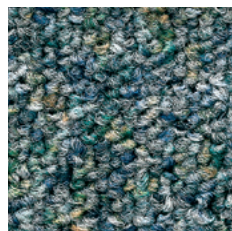
Piranha 03320
LRV 5.11



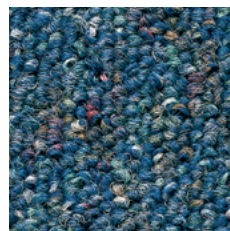
Hawk 03316
LRV 12.73



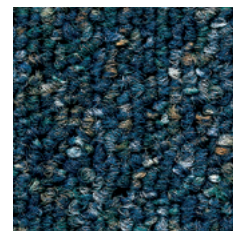
Rattlesnake 03321
LRV 10.27



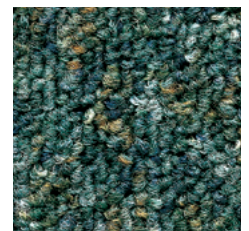
Scorpion 03304
LRV 9.26



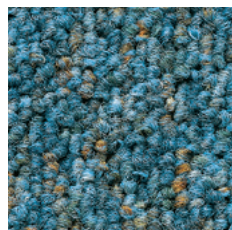
Barracuda 03305
LRV 9.84



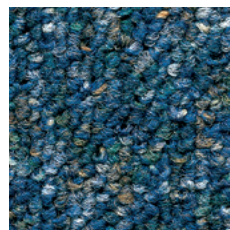
Orca 03303
LRV 6.06



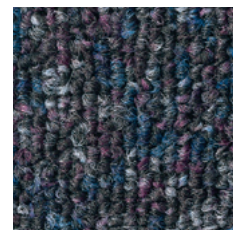
Mantis 03302
LRV 9.50



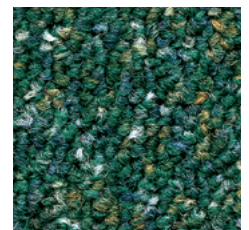
Shark 03313
LRV 10.09



Stingray 03308
LRV 2.55



Panther 03314
LRV 5.28



Python 03307
LRV 8.17

Sahara



Environmental Profiles
ENP 399cx

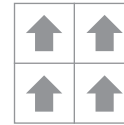
BRE Global (BREEAM):
'A+' Retail (tile)



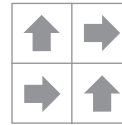
Canyon Grey 01917

Specification:	Tile
Product Dimensions	500mm x 500mm
Product Construction	Tufted Structured Loop Pile
Surface Yarn	100% Aquafil Alto Chroma SDN
Total Carpet Weight	4947 g/m ²
Tufted Pile Weight	900 g/m ²
Primary Backing	Non-woven
Secondary Backing	Bitumen
Total Carpet Thickness	7mm

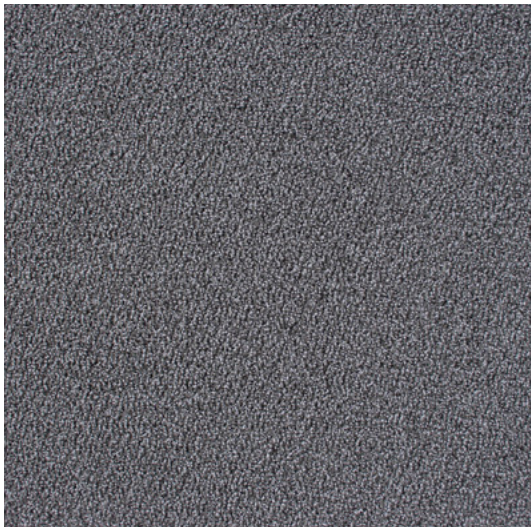
For full specification information visit www.gradusworld.com



Broadloom



Quarter Turn



500mm x 500mm View



Desert Dune 01919
LRV 24.65



Mali Stone 01921
LRV 17.22



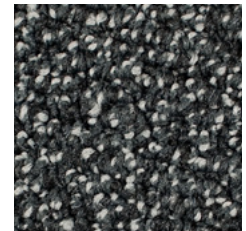
Natural Terrain 01923
LRV 10.96



Fezzan Grey 01920
LRV 18.91



Hamadas Brown 01925
LRV 7.67



Black Diamond 01918
LRV 4.61

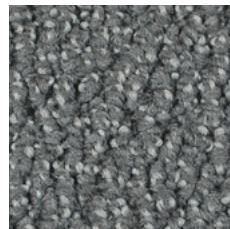
Samples

An accurate colour match can only be achieved by requesting the relevant product sample(s) from Gradus Technical Support on 01625 428922.

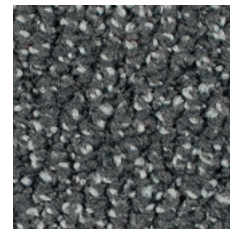


Related products

Wall Street - see page 70
Skyline - see page 58
SqMile - see page 62



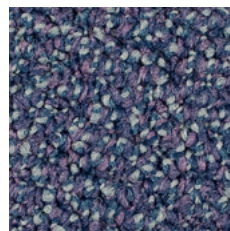
Iron Plateau 01922
LRV 8.51



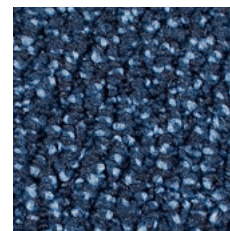
Libyan Ash 01924
LRV 7.83



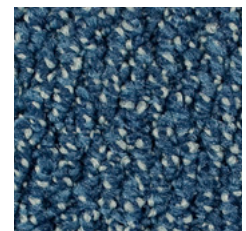
Canyon Grey 01917
LRV 7.34



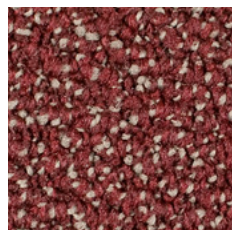
Moroccan Sky 01908
LRV 8.05



Tuareg Blue 01909
LRV 5.23



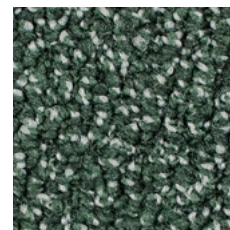
Nomad Blue 01912
LRV 8.08



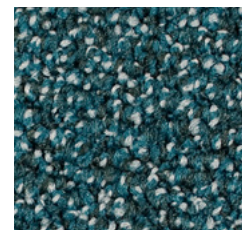
Red Valley 01926
LRV 5.76



Monsoon Rain 01928
LRV 4.10



Green Acacia 01927
LRV 6.73



Atlas Green 01929
LRV 6.20