

# GRADUS

Uniclass L5361: P71	
CI/SfB (43)	Tn6



**Matting | Boulevard**

# Where to use barrier matting

An effective barrier matting system, when correctly specified, will help to minimise the risk of slip accidents caused by wet flooring and lower maintenance costs by significantly reducing the amount of dirt and moisture tracked into a building. Barrier matting can not only be used at a building's entrance and access points but also in other areas that are subject to increased risk of soiling and heavy wear. In many cases the optimum performance is achieved by combining different types of barrier matting.

For the full range of Gradus Barrier Matting Systems request a catalogue or visit [www.gradusworld.com](http://www.gradusworld.com)

The illustration below is designed to act as a guide to show some of the areas of a building that are at risk.



## Zone 1 Exterior Entrances & Access Points

### Primary Barrier Matting

- Removes excess dirt prior to entering a building using a scraper wiper
- Increases the effectiveness of internal primary and secondary matting
- Ideal in heavy traffic areas

## Zone 2 Interior Entrances & Access Points

### Primary Barrier Matting

- Removes and retains dirt and moisture to prevent ingress to adjacent floorcoverings through a combination of scraper and textile wipers
- Available with a choice of wipers that offer excellent appearance retention when cleaned in accordance with Gradus recommendations
- Available in a choice of open and closed construction and in different gauges to suit both recessed and surface mounted options
- Available to suit varying types and volumes of traffic

## Zone 3 Interior Circulation Areas and Some Interior Entrances & Access Points

### Secondary Barrier Matting

- Removes and retains dirt and moisture to prevent ingress to adjacent floorcoverings
- Often used in conjunction with Zone 2 primary entrance mats to create additional protection for surrounding floorcoverings. Can, in some circumstances, be used as stand alone entrance barrier matting
- Ideal for use in areas of heavy traffic and heavy wear such as staircases, reception areas, lift lobbies and internal entrances such as factory to office areas etc
- Offers excellent appearance retention properties when cleaned in accordance with Gradus recommended cleaning methods. Some products carry the additional protection of a wear warranty

## Zone 4 Other Areas

### Secondary Barrier Matting

Products:	page
Boulevard 6000	2
Boulevard 5000 <sup>HD</sup>	4
Boulevard 1500	6

- Removes and retains dirt and moisture to prevent ingress to adjacent floorcoverings
- Ideal for use in internal areas subject to a risk of spillage and soiling such as canteen / vending areas or breakout areas within an office environment
- Products are produced from high performance fibres that are suited to intense cleaning to ensure long life appearance retention. Some products carry the additional protection of a wear warranty

Products:	page
Boulevard 6000	2
Boulevard 5000 <sup>HD</sup>	4
Boulevard 1500	6

# Boulevard 6000

Boulevard 6000 Indigo and Brickworks Holbrook 06712



## Product information:

A tufted cut pile high performance barrier carpet incorporating a heavy scraper fibre for optimum dirt removal and excellent moisture retention properties in the most demanding environments.

Barrier carpet provides an effective solution to reducing maintenance costs on surrounding floorcoverings and helps minimise the risk of slip on hard floor finishes. It can also, when maintained correctly, help protect the appearance of surrounding floorcoverings throughout their life.

Often used in conjunction with a primary entrance mat and in some situations can be used as stand-alone matting in entrances and access points. It is also ideal for use in all areas of a building, particularly those at greatest risk of damage from tracked through soil and moisture e.g. Reception areas, staircases, lifts, canteen areas, service points etc.

Designed to complement Esplanade Plus and Access primary barrier matting.

Warranties:	Sheet	Tile
Wear	10 Years	10 Years

Specification:	Sheet	Tile
Product Dimensions	25m x 2m	500mm x 500mm
Product Construction	Tufted Cut Pile	
Surface Yarn	100% Aquafil Alto Chroma SDN	
Backing	PVC	Bitumen
Total Weight	4470 g/m <sup>2</sup>	4768 g/m <sup>2</sup>
Total Thickness	8mm	9mm
Pile Height	5mm	5mm

## Performance Specification

Classification BSEN 1307	Class 3
Static Electricity ISO 6356	<2kV
Thermal Resistance BS 4745: 1990	1.3 (TOG)

## Flammability

BSEN 13501-1	Class Cf1-s1
--------------	--------------

For recommended adhesives contact Technical Services on 01625 428922.



ISO 9001 : FM 10763  
ISO 14001 : EMS 59511  
ISO 18001 : IV 18/18493



## BRE Certification (BREEAM):

This carpet has been awarded the highest green guide 'A+' rating under the BRE's certified environmental profile scheme. For full information on ratings visit [www.greenbooklive.com](http://www.greenbooklive.com)



ENP 399  
Greenguide A+

## Samples

An accurate colour match can only be achieved by requesting the relevant product sample(s) from Gradus Technical Support on 01625 428922.



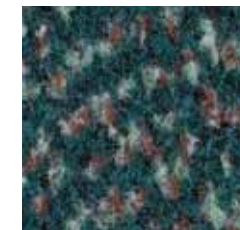
500mm x 500mm View



Shadow  
LRV 5.36



Walnut  
LRV 2.86



Rosemary  
LRV 4.45



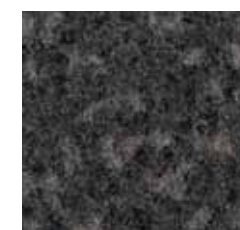
Galaxy  
LRV 2.56



Indigo  
LRV 4.01



Atlantic  
LRV 1.90



Nickel  
LRV 3.70



Nightfall  
LRV 1.48

# Boulevard 5000<sup>HD</sup>



Boulevard 5000<sup>HD</sup> Redpoll and Times Square Red

## Product information:

A tufted cut pile high performance barrier carpet incorporating a light scraper fibre for optimum dirt removal and excellent moisture retention properties in most contract environments.

Barrier carpet provides an effective solution to reducing maintenance costs on surrounding floorcoverings and helps minimise the risk of slip on hard floor finishes. It can also, when maintained correctly, help protect the appearance of surrounding floorcoverings throughout their life.

Often used in conjunction with a primary entrance mat and in some situations can be used as stand-alone matting in entrance and access points. It is also ideal for use in any area of a building prone to soil and moisture damage such as staircases, lifts, canteen areas or in areas of heavy wear such as reception areas or corridors.

Designed to complement Esplanade Plus and Access primary barrier matting.

Warranties:	Sheet
Wear	5 Years

Specification:	Sheet
Product Dimensions	25m x 2m
Product Construction	Tufted Cut Pile
Surface Yarn	100% Aquafil Alto Chroma SDN
Backing	PVC
Total Weight	4300 g/m <sup>2</sup>
Total Thickness	7.5mm
Pile Height	5mm

Performance Specification	
Classification BSEN 1307	Class 3
Static Electricity ISO 6356	<2kV

Flammability	
BSEN 13501-1	Class Cf-s1

For recommended adhesives contact Technical Services on 01625 428922.



ISO 9001 : FM 10763  
ISO 14001 : EMS 59511  
ISO 18001 : IV 18/18493



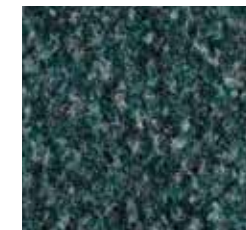
500mm x 500mm View



Corncrake  
LRV 9.52



Kestrel  
LRV 5.42



Shelduck  
LRV 5.20



Redpoll  
LRV 4.14



Cuckoo  
LRV 5.63



Swallow  
LRV 2.08



Moorhen  
LRV 2.98



Jackdaw  
LRV 1.73

## Samples

An accurate colour match can only be achieved by requesting the relevant product sample(s) from Gradus Technical Support on 01625 428922.

# Boulevard 1500



Boulevard 1500 Terra

## Product information:

A cost effective barrier matting that is easy to install and maintain. Its ribbed design is resistant to compression and offers a superior alternative to coir matting, in line with the guidance in BS8300:2009+A1:2010 and Approved Document M of The Building Regulations 2000.

Barrier carpet provides an effective solution to reducing maintenance costs on surrounding floorcoverings and helps minimise the risk of slip on hard floor finishes. It can also, when maintained correctly, help protect the appearance of surrounding floorcoverings throughout their life. Boulevard 1500 is often used in conjunction with a primary entrance mat and in some situations can be used as a stand alone matting in entrances and access points.

Designed to complement Esplanade 1500 primary barrier matting.

Specification:	Sheet
Product Dimensions	15m x 2m
Product Construction	Needlepunch
Surface Yarn	100% Polypropylene
Backing	Rubber
Total Weight	3000 g/m <sup>2</sup>
Total Thickness	9mm

## Flammability

Hot Metal Nut Test BS4790	Pass, Low Radius of Effects of Ignition
---------------------------	---

For recommended adhesives contact Technical Services on 01625 428922.



ISO 9001 : FM 10763  
ISO 14001 : EMS 59511  
ISO 18001 : IV 18/18493

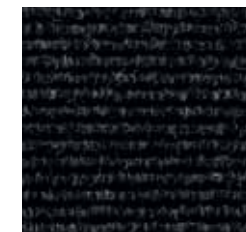


## Samples

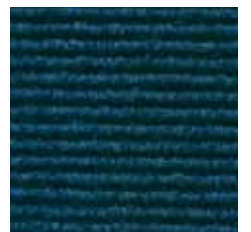
An accurate colour match can only be achieved by requesting the relevant product sample(s) from Gradus Technical Support on 01625 428922.



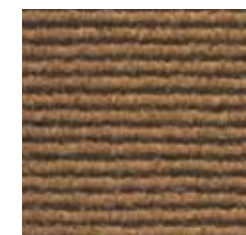
500mm x 500mm View



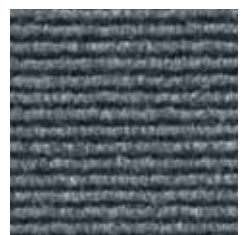
Tempestas  
LRV 2.14



Marinus  
LRV 2.71



Terra  
LRV 10.89



Calculus  
LRV 9.03

# Cleaning & Maintenance



Boulevard 5000<sup>HD</sup> Kestrel

A planned cleaning and maintenance programme is crucial to help maintain the performance and visual appearance of Gradus barrier matting and to maximise the lifespan of the product. Trained cleaning staff or a reputable contract cleaner should be used.

## Daily Cleaning

Sweep and vacuum daily to remove surface soil using a heavy duty upright vacuum cleaner with a brush or tub vacuum cleaner with a power head. Inspect for chewing gum and remove as necessary (see [chewing gum removal](#) for more information).

If the matting is wet, the area should be vacuumed using a wet pick up machine to remove as much water / soil as possible.

## Deep Cleaning

To maintain a good visible standard, the matting will require deep cleaning on a weekly / monthly / as required basis (depending on weather conditions and volume of traffic). Deep cleaning can be carried out using various methods, depending on equipment availability.

**In all cases, deep cleaning must follow brushing and vacuuming. Attention must be given to stains by using a pre-treatment of carpet spot and stain remover and chewing gum remover if required.**

- A) Preferred Method: The use of a conventional jet extraction machine, using a conventional floor tool, scrubbing the carpet and continuing to extract as much water as possible. This method leaves the carpet as dry as possible.
- B) Deep Soiled Matting: As with all other maintenance methods, always prepare the carpet by vacuum cleaning prior to treatment. The cleaning professional may consider a combination of a rotary scrubbing machine fitted with a carpet brush and extraction equipment to get improved results.



Wet Pick Up Machine



Jet Extraction Machine



Rotary Scrubbing Machine

## Recommended Cleaning Products

Gradus has worked with Selden Research to undertake extensive testing on Gradus barrier matting products. As a result, a range of cleaning products has been recommended for use with Gradus matting.

The cleaning products listed below are suitable for Gradus barrier matting.

Product Description	Name of Cleaner	Code
High Soiling and Traffic Cleaner	Heavy Duty Extraction Shampoo	C156
Hot Water Extraction Cleaner	Selfoam H.E.	C034
Carpet Spot & Stain Remover	Spot & Stain	T012

## Chewing Gum Removal

Chewing gum can be removed by freeze spraying or by applying a suitable chewing gum remover. Lightly spray onto the affected area and allow the product to freeze the gum. Scrape off with a blunt object such as a spatula.

Recommended cleaning product:

Product Description	Name of Cleaner	Code
Chewing Gum Remover	Selfreeze	K003

For further information about these cleaning products, including instructions for use and COSHH data sheets, please contact:

Selden Research Limited, Staden Business Park, Staden Lane, Buxton, Derbyshire, SK17 9RZ.  
Tel: 01298 26226 Email: [gradus@selden.co.uk](mailto:gradus@selden.co.uk) Website: [www.selden.co.uk](http://www.selden.co.uk)



**[www.gradusworld.com](http://www.gradusworld.com)**  
**call: 01625 428922**

**GRADUS**

**Gradus Accessories Park Green Macclesfield Cheshire SK11 7LZ England UK**

**Tel: 01625 428922 Fax: 01625 433949**

For enquiries outside the UK and Eire contact Gradus International on +44 (0)1625 613780

**[www.gradusworld.com](http://www.gradusworld.com)**