

Wall Guards & Wall Strips



Gradus website:
www.gradusworld.com

InPro wall guards and wall strips are designed to offer impact protection against damage from wheeled traffic, such as trolleys, wheelchairs, beds, carts and other mobile equipment. Ideal for Education, Healthcare, Commercial, Retail, Hospitality and Leisure interior environments.

Profiles

- Wall Guards comprise PVC-u covers with aluminium retainers and a full range of finishing accessories. Selected profiles also feature internal impact bumpers for additional strength and impact absorption
- Infinity fixing clips available for selected profiles as a cost effective alternative (50mm fixing clips – supplied 10 per 3.66m length). Infinity options indicated with the suffix 'i' e.g. 1800i
- Replaceable, through-coloured, easy to clean covers
- Supplied in 3.66m lengths
- Stainless steel (page 58) and rubber (page 66) wall guards also available
- For wall strip information see page 34

Information

- 30 colour options. See pages 16 to 17 for details, Light Reflectance Values (LRVs) and NCS references
- For guidance on selection in line with HBN 00-10 and Mat 05 see pages 73 and 76
- Rapid Response 24 hour availability – see profiles highlighted with symbol and page 16 for colour details
- Visit: www.gradusworld.com to download: AutoCAD drawings, Gradus & NBS Specifications, Cleaning & Maintenance, Installation Guidelines and Health & Safety Data Sheets
- For specification & ordering guidelines see page 78



Wall Guards & Wall Strips

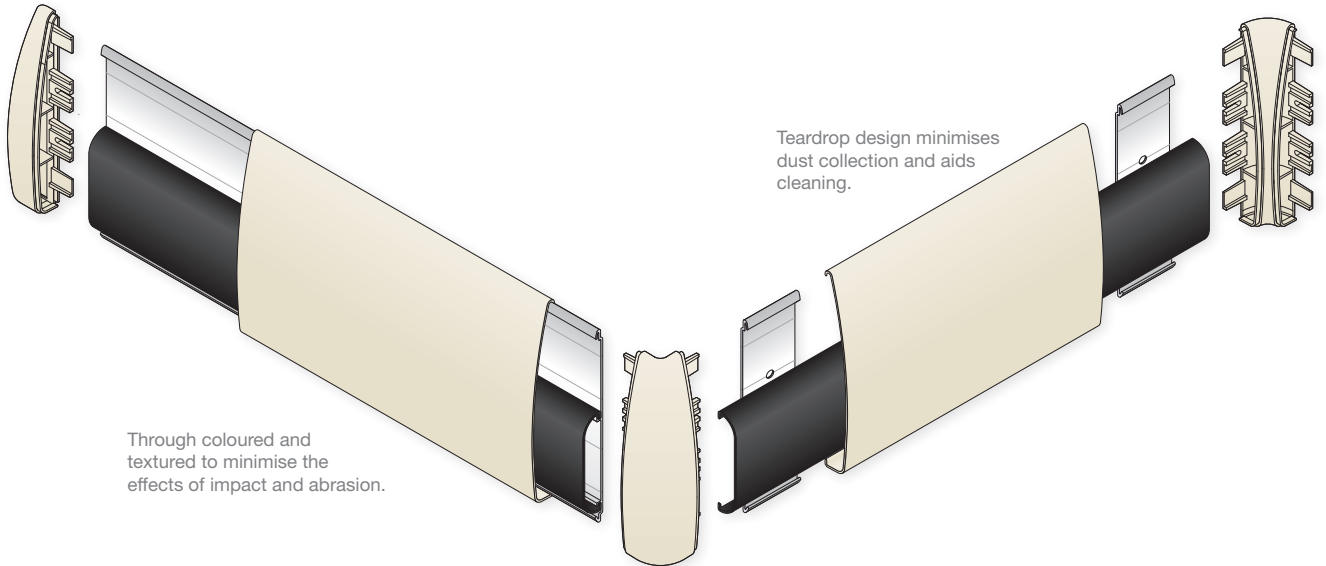
1800 & 1800i Wall Guard - typical example

1800 Continuous retainer

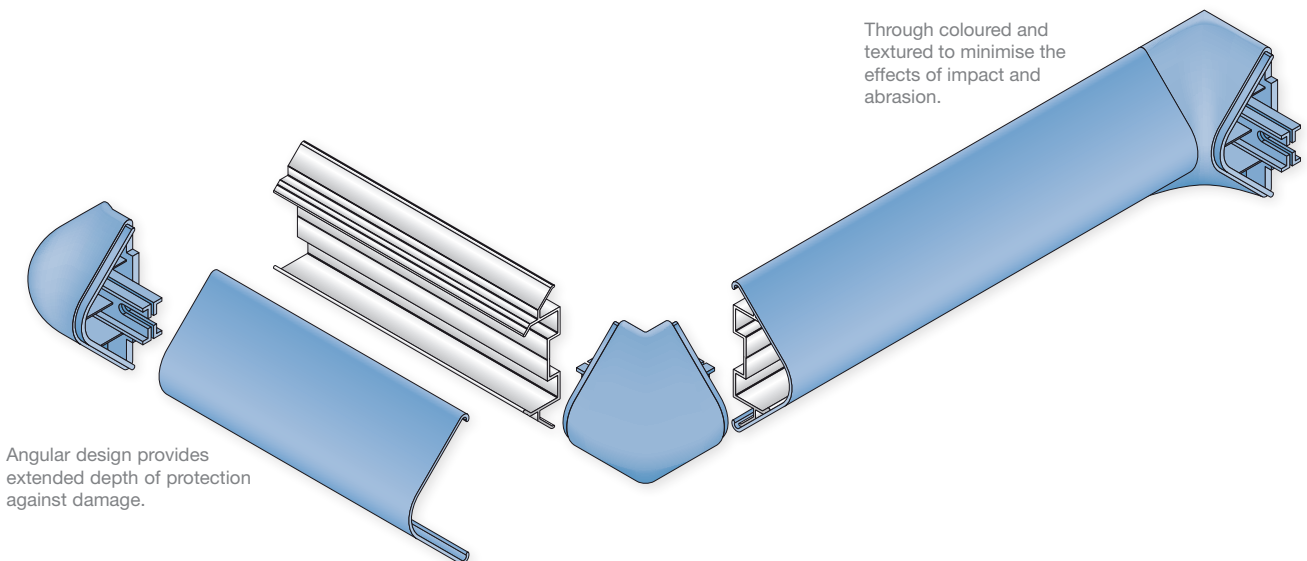
- Provides continuous rigid support for weaker substrates
- Ideal for bridging short gaps, recesses and voids

1800i Infinity retainer (50mm fixing clips)

- Easy installation - ideal for one person
- Cost effective solution
- Suitable for gently undulating backgrounds



1300 Wall Guard - typical example



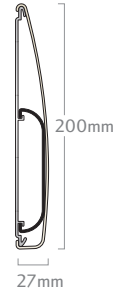
Wall Guards & Wall Strips Selection Guide

Product

1800 Wall Guard



1800i Wall Guard



1500 Wall Guard



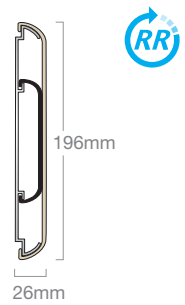
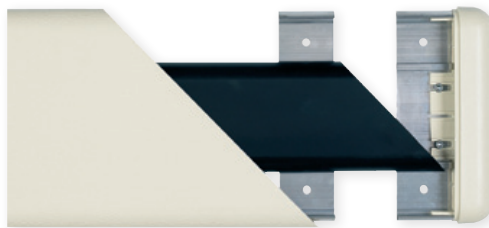
1500i Wall Guard



700 Wall Guard



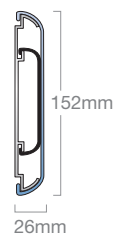
700i Wall Guard



1600 Wall Guard



1600i Wall Guard



Left
End Cap

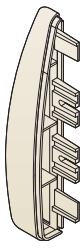
Right
End Cap

Outside
Corner 90°

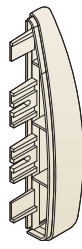
Inside
Corner 90°

Spacer
13x100x50mm
(Optional)

Cover Splice Support



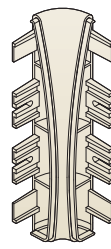
1801L



1801R



1802



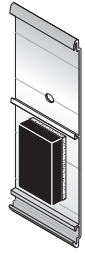
1803



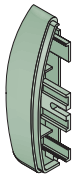
1601
For use with
continuous retainer only



1606
Continuous



1806i
Infinity



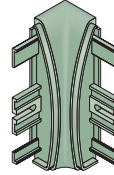
1501L



1501R



1502



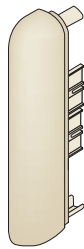
1503



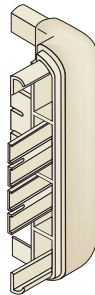
1601
For use with
continuous retainer only

n/a

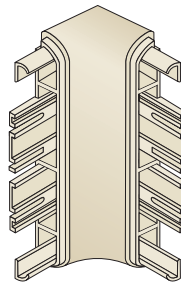
n/a



701 (Universal)



702



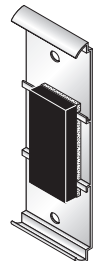
707



1601
For use with
continuous retainer only



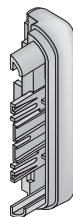
706
Continuous



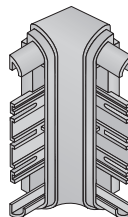
706i
Infinity



1622 (Universal)



1623



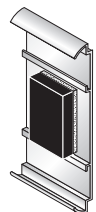
1627



1601
For use with
continuous retainer only



1606
Continuous



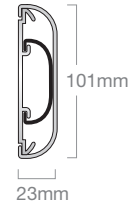
1606i
Infinity

Wall Guards & Wall Strips Selection Guide

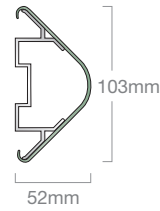
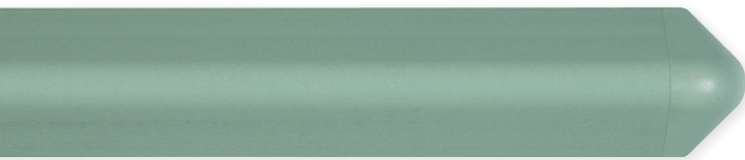
Product

1400 Wall Guard

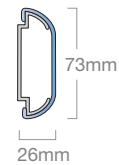
1400i Wall Guard



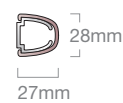
1300 Wall Guard



500 Wall Guard



200 Wall Guard

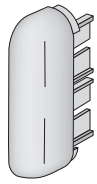


End Cap
(Universal)

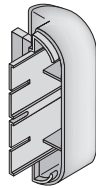
Outside
Corner 90°

Inside
Corner 90°

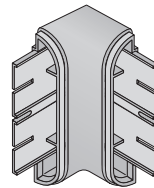
Spacer
13x50mm ϕ
(Optional)



1402



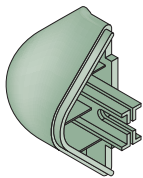
1403



1407



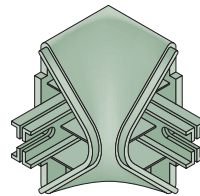
501
For use with
continuous retainer only



1302



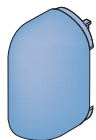
1303



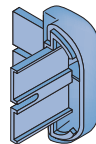
1307



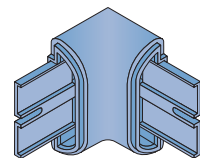
501



502



503



507



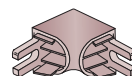
501



201



202



207

n/a

Armaclad® Wall Strips

Gradus Armaclad wall strips are a cost effective alternative to wall guards and are easy to install. Ideal for use in a wide range of commercial environments, from hotels and schools through to health clinics and offices.

Profiles

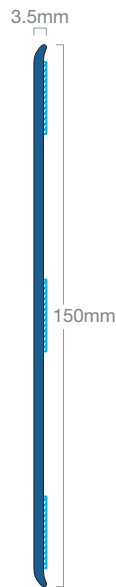
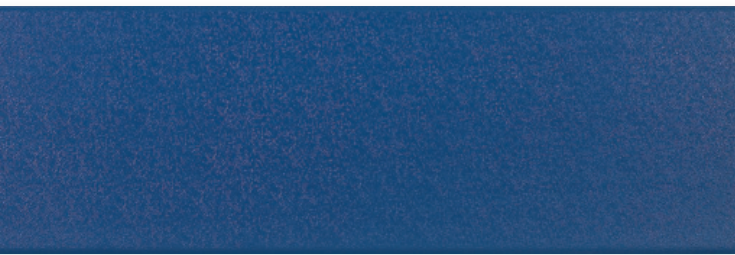
- The scratch and stain resistant PVC-u is through coloured and textured to conceal the effects of impact and abrasion
- Supplied in 3.66m lengths
- Available with tape for quick and easy installation, or without tape for installing with a suitable adhesive
- Can be used along the entire length of a wall or cut down into kickplates or pushplates



Information

- 30 colour options. See pages 16 to 17 for details, Light Reflectance Values (LRVs) and NCS references
- Rapid Response 24 hour availability – see profiles highlighted with symbol and page 16 for colour details
- Visit: www.gradusworld.com to download: AutoCAD drawings, Gradus & NBS Specifications, Cleaning & Maintenance, Installation Guidelines and Health & Safety Data Sheets

ARM150		3.66m
	150mm	With Tape ARM150T
		Without Tape ARM150N



Rubrills are an alternative to Wall Strips - see page 48

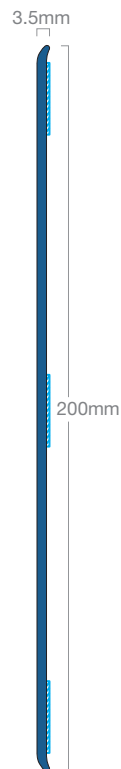
ARM200		3.66m
	200mm	With Tape ARM200T
		Without Tape ARM200N



Rapid Response with tape only



Reverse view to show factory applied tape (also available without tape for adhesive fixing)



Bed Head Protectors & Locators



Gradus website:
www.gradusworld.com

InPro bed head protectors and locators are designed to prevent damage to walls and wall mounted equipment from beds that are frequently moved around, elevated or inclined. Typically used in nursing homes, care homes and hospitals.

Profiles

- Bed head protectors are usually fixed vertically on to walls in pairs, allowing protection when beds are moved around, elevated or inclined. Can also be used singly as chair protectors (see photo to right)
- Bed locators are fixed horizontally to walls, with end caps at either side preventing side-to-side movement, allowing the bed to be precisely lined up with essential medical equipment
- Extender bracket (BLXB2 – page 37) also available for use with bed head protectors and locators to increase projection from the wall where medical equipment demands

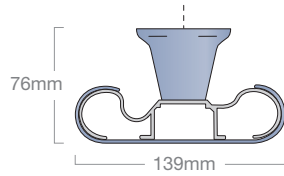


Information



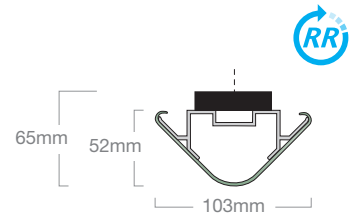
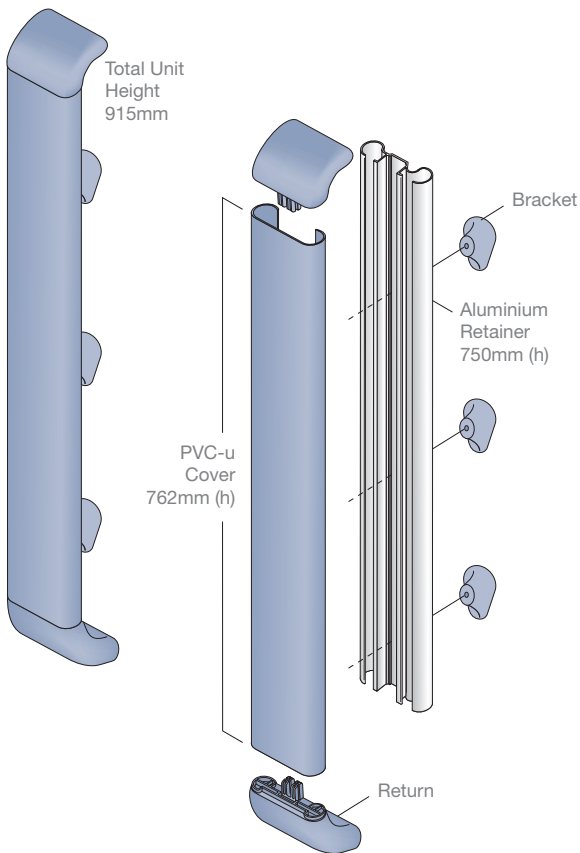
- 30 colour options. See pages 16 to 17 for details, Light Reflectance Values (LRVs) and NCS references
- Rapid Response 24 hour availability – see profiles highlighted with symbol and page 16 for details
- Visit: www.gradusworld.com to download: AutoCAD drawings, Gradus & NBS Specifications, Cleaning & Maintenance, Installation Guidelines and Health & Safety Data Sheets
- For specification & ordering guidelines see page 78

Bed Head Protectors



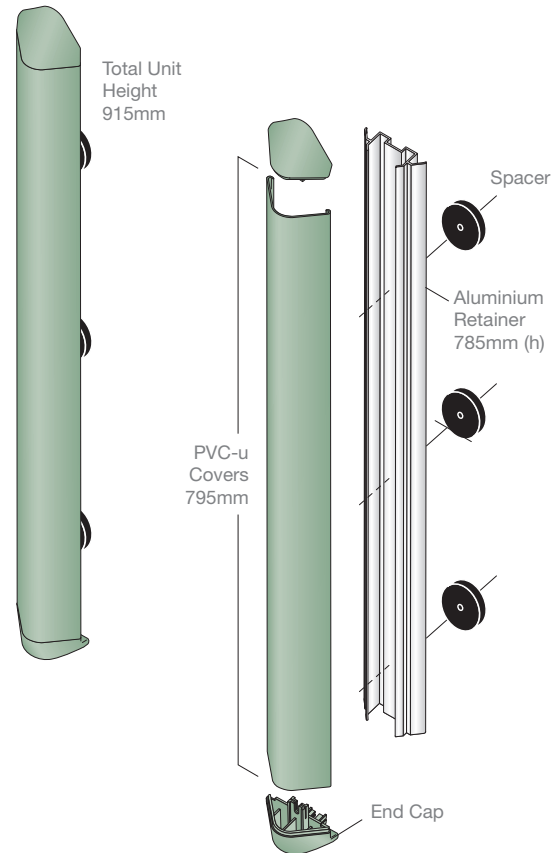
BL800

- Supplied as a pre-cut packaged system for ease of installation.
- Package consists of 2 lengths of 800 aluminium retainer and PVC-u cover, 4 x 802 returns and 6 x 801 Brackets.
- Extender brackets available (see opposite).



BL1300

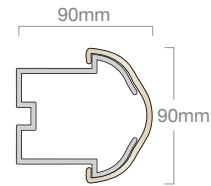
- Supplied as a pre-cut packaged system for ease of installation.
- Package consists of 2 lengths of 1300 aluminium retainer and PVC-u cover, 4 x 1302 end caps and 6 x 501 Spacers.
- Extender brackets available (see opposite).



Profiles: Dimensions shown are nominal. Illustrations are not full size. Products subject to minor design alterations without notice.

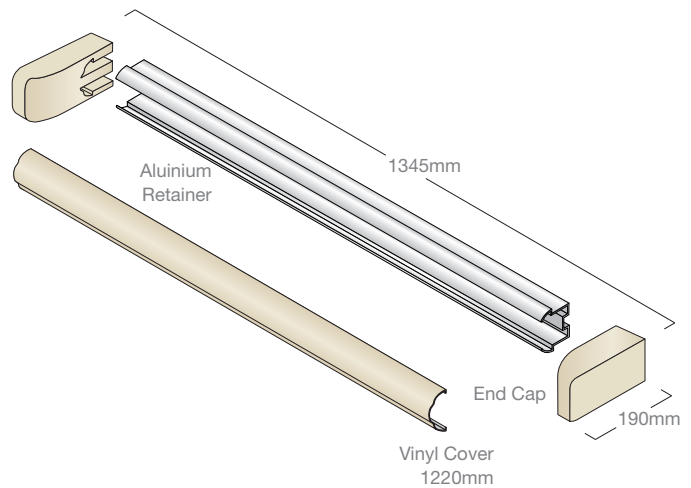
Bed Locator & Bed Head Extender Bracket

Front View



BL6000 - Bed Locator

- Supplied as a pre-cut packaged system for ease of installation.
- Package consists of one length of aluminium retainer, a PVC-u cover and two end caps.
- Extender brackets available (see below).

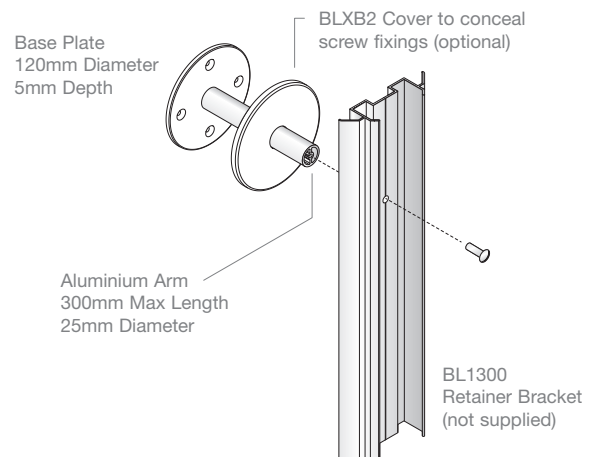


BLXB2 - Extender Brackets

Extender Brackets are suitable for all bed protector and bed locator profiles, designed to suit the varying projection requirements in rooms throughout the building.

Provided with all assembly fixings. Wall fixings should be sourced to suit substrate.

- Length: 300mm (can be cut down to size on-site)
- Colour: White powder coated aluminium base plate and tube with matt white pvc cover
- BLXB2 available Autumn 2012 and will supersede BLXB



Corner Guards



Gradus website:
www.gradusworld.com

InPro corner guards are available in a variety of styles and heights in order to provide protection to one of the most vulnerable elements of a building's interior against damage caused by wheeled & pedestrian traffic. Ideal for reducing maintenance costs and maintaining appearance in all environments.

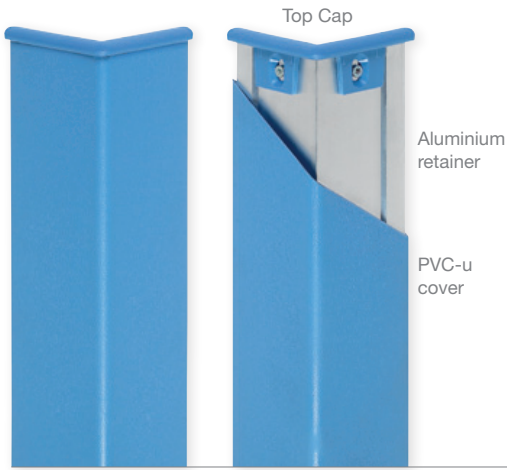
Profiles

- Choice of high impact (surface or flush mounted) corner guards with PVC-u covers and aluminium or PVC-u retainers; standard PVC-u corner guards; Flexi-Angle PVC-u corner guards or clear polycarbonate corner guards
- PVC-u is through-coloured and textured to conceal the effects of impact and abrasion
- Stainless steel (page 63) and rubber (page 67) corner guards also available

Information

- 30 colour options for PVC-u profiles (Flexi-Angle profile available in Rapid Response colours only) – for colour swatches, Light Reflectance Values (LRVs) and NCS references see pages 16 to 17
- Selecting contrasting colours for corner identification in areas used by the visually impaired helps meet guidelines in BS8300:2009+A1:2010 and Approved Document M (2004). See pages 70 to 73 for guidelines
- Rapid Response 24 hour availability – see profiles highlighted with symbol and page 16 for colour details
- Visit: www.gradusworld.com to download: AutoCAD drawings, Gradus & NBS Specifications, Cleaning & Maintenance, Installation Guidelines and Health & Safety Data Sheets



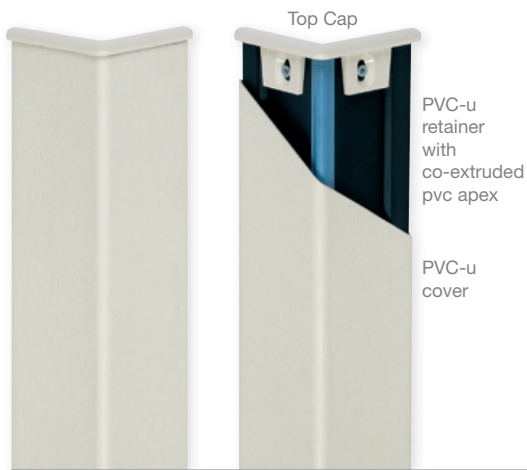


Surface Mount

High Impact Corner Guards - Aluminium Retainer

Surface mount high impact corner guards are supplied in a package format with pre-cut aluminium retainer, PVC-u cover, and top/bottom caps. The cover is easily replaced if damaged. This option is ideal for weaker substrates where the aluminium provides additional support. Corner guards can also be cut down to suit specific requirements, with additional top/bottom caps available to order.

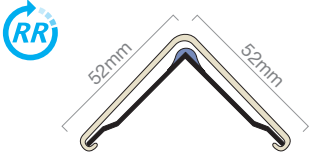
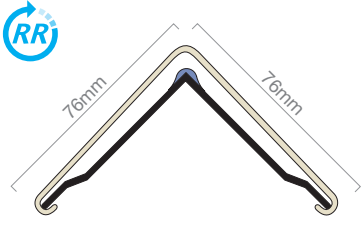
	Height Options & Codes					Additional Top / Bottom Caps
	0.90m	1.22m	2.44m	2.74m	3.66m	
160 Series - 90° 	163	164	168	169	1612	161TC
150 Series - 90° 	153	154	158	159	1512	151TC
130 Series - 135° 	133	134	138	139	1312	121TC
170 Series - 90° 	173	174	178	179	1712	171TC

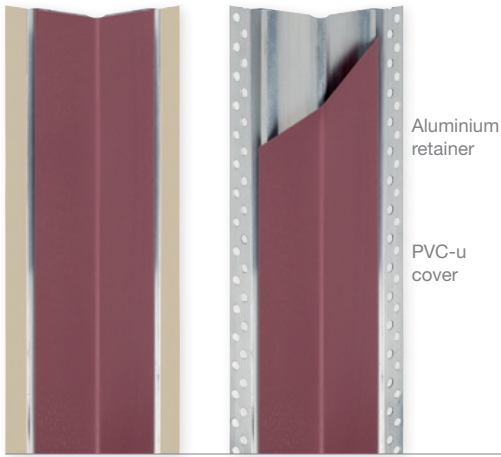


Surface Mount

High Impact Corner Guards - PVC-u Retainer

Surface mount high impact corner guards are supplied in a package format with pre-cut PVC-u retainer, PVC-u cover and top/bottom caps. The cover is easily replaced if damaged. The PVC-u retainer features a flexible PVC apex providing additional impact absorption. Corner guards can also be cut down to suit specific requirements, with additional top/bottom caps available to order.

	Height Options & Codes					Additional Top / Bottom Caps
	0.90m	1.22m	2.44m	2.74m	3.66m	
160BN Series - 90° 	163BN	164BN	168BN	169BN	1612BN	161TC
150BN Series - 90° 	153BN	154BN	158BN	159BN	1512BN	151TC
130BN Series - 135° 	133BN	134BN	138BN	139BN	1312BN	121TC
170BN Series - 90° 	173BN	174BN	178BN	179BN	1712BN	171TC



Flush Mount

High Impact Corner Guards - Aluminium Retainer

Flush mount high impact corner guards are built into the wall to form the corner for reinforcement and provide a smooth transition from wall to corner. They are supplied in a package format with pre-cut aluminium retainer and PVC-u cover (top/bottom caps are not required). The cover is easily replaced if damaged. Corner guards can also be cut down to suit specific requirements.

		<i>Height Options & Codes</i>		
		2.44m	2.74m	3.66m
160F Series - 90°		168F	169F	1612F
150F Series - 90°		158F	159F	1512F
130F Series - 135°		138F	139F	1312F
170F Series - 90°		178F	179F	1712F



Surface Mount

Standard Corner Guards - PVC-u

Standard PVC-u corner guards are a cost effective solution to corner protection and are ideal for environments such as hotels, leisure clubs, schools, offices and nursing homes. Standard corner guards are supplied with tape for ease of installation or without, for installation with a suitable adhesive.

		Height Options & Codes						
		0.90m	1.22m	2.44m	2.74m	3.66m		
90°		 With Tape	3435	3448	3496	3409	3412	
		Without Tape	3435N	3448N	3496N	3409N	3412N	
		With Tape	11235	11248	11296	11209	11212	
		Without Tape	11235N	11248N	11296N	11209N	11212N	
		 With Tape	2235	2248	2296	2209	2212	
		Without Tape	2235N	2248N	2296N	2209N	2212N	
		With Tape	2535	2548	2596	2509	2512	
		Without Tape	2535N	2548N	2596N	2509N	2512N	
		 With Tape	3335	3348	3396	3309	3312	
		Without Tape	3335N	3348N	3396N	3309N	3312N	
	135°		With Tape	235135	248135	296135	209135	212135
			Without Tape	235135N	248135N	296135N	209135N	212135N
		With Tape	335135	348135	396135	309135	312135	
		Without Tape	335135N	348135N	396135N	309135N	312135N	



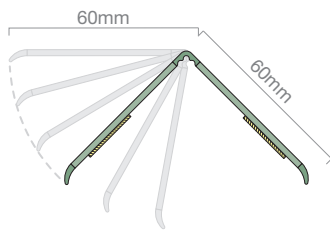
PVC-u with flexible pvc apex

Surface Mount

Flexi-Angle - PVC-u / pvc

Flexi-Angle corner guards are designed to provide a cost effective corner protection solution for irregular angle corners and are ideal for environments such as hotels, leisure clubs, schools, offices and nursing homes. The co-extruded profile with rigid wings and flexible pvc apex allows the corner guard to flex to irregular angles. The flexible wing tips seal the profile to the wall for a neat finish. Flexi-Angle can be supplied with tape for ease of installation or without for installation with a suitable adhesive.

Flexi-angle



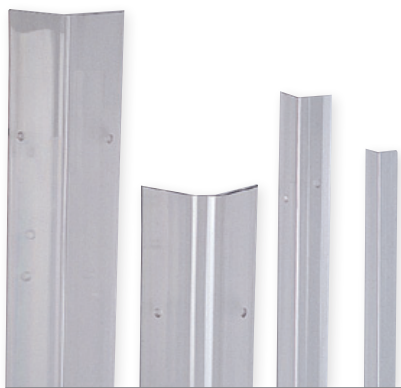
With Tape

Without Tape

Height Options & Codes

	0.90m	1.22m	2.44m	2.74m	3.66m
With Tape	6035	6048	6096	6009	6012
Without Tape	6035N	6048N	6096N	6009N	6012N

Available in Rapid Response colours only - see pages 16 to 17 for details

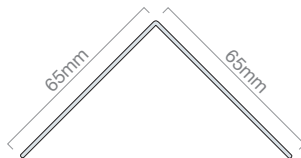
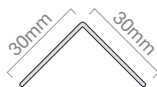


Surface Mount

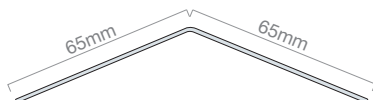
Standard Corner Guards - Clear Polycarbonate

Clear polycarbonate corner guards provide protection for wallcoverings and finishes whilst allowing pattern and colour to show through. Ideal for environments such as hotels, leisure clubs, schools, offices and nursing homes. Clear polycarbonate corner guards are supplied with pre-drilled holes for fixing to the wall (note: 20mm is not drilled).

90°



135°



Height Options & Codes

	1.22m	2.44m
20mm	434	834
30mm	4118	8118
65mm	421290	821290
65mm	4212135	8212135





Sanparrel™ Protective Sheet

Information on Gradus InPro Sanparrel™ protective sheet covering standard sheet & rubrails. Details on the bespoke services of cutting and forming can also be found in this section.

For information on Sanparrel™ kickplates & pushplates see page 52.

Sanparrel™ Protective Sheet



Gradus website:
www.gradusworld.com

Gradus InPro Sanparrel™ sheet is designed to work as a stand-alone product or as part of the InPro range for a complete protection solution. Sanparrel PVC-u sheet is through-coloured and textured to conceal the effects of impact and abrasion. Sanparrel™ reduces the need to repair and repaint wall surfaces and, with minimal maintenance, optimises the appearance retention of the wall.

Profiles

- Supplied in sheet form with finishing trims, or can be cut or formed into rubrails, kickplates, door protection, corner protection and bespoke solutions
- Tested in accordance with EN ISO 11925-2:2002 and EN 13823:2002 and classified according to EN 13501-1:2002 as – Reaction to Fire classification: B - s3, d0. Tested as resistant to chemicals, bacteria and fungal growth (page 79)
- Designed for use on internal vertical surfaces

Information:



- 30 colour options. See pages 16 to 17 for details, Light Reflectance Values (LRVs) and NCS references
- Rapid Response 24 hour availability on all colours (sheet only - lead times may apply to cut and formed products dependent on quantity and requirements)
- Visit: www.gradusworld.com to download: AutoCAD drawings, Gradus & NBS Specifications, Cleaning & Maintenance, Installation Guidelines and Health & Safety Data Sheets

Sanparrel™ Protective Sheet

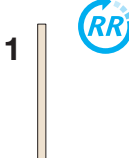
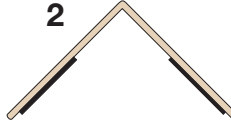



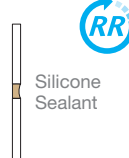
Sanparrel™ PVC-u sheet offers total protective covering to walls and is installed as a full cladding (floor to ceiling) or to dado height to protect against damage caused by wheeled and pedestrian traffic.

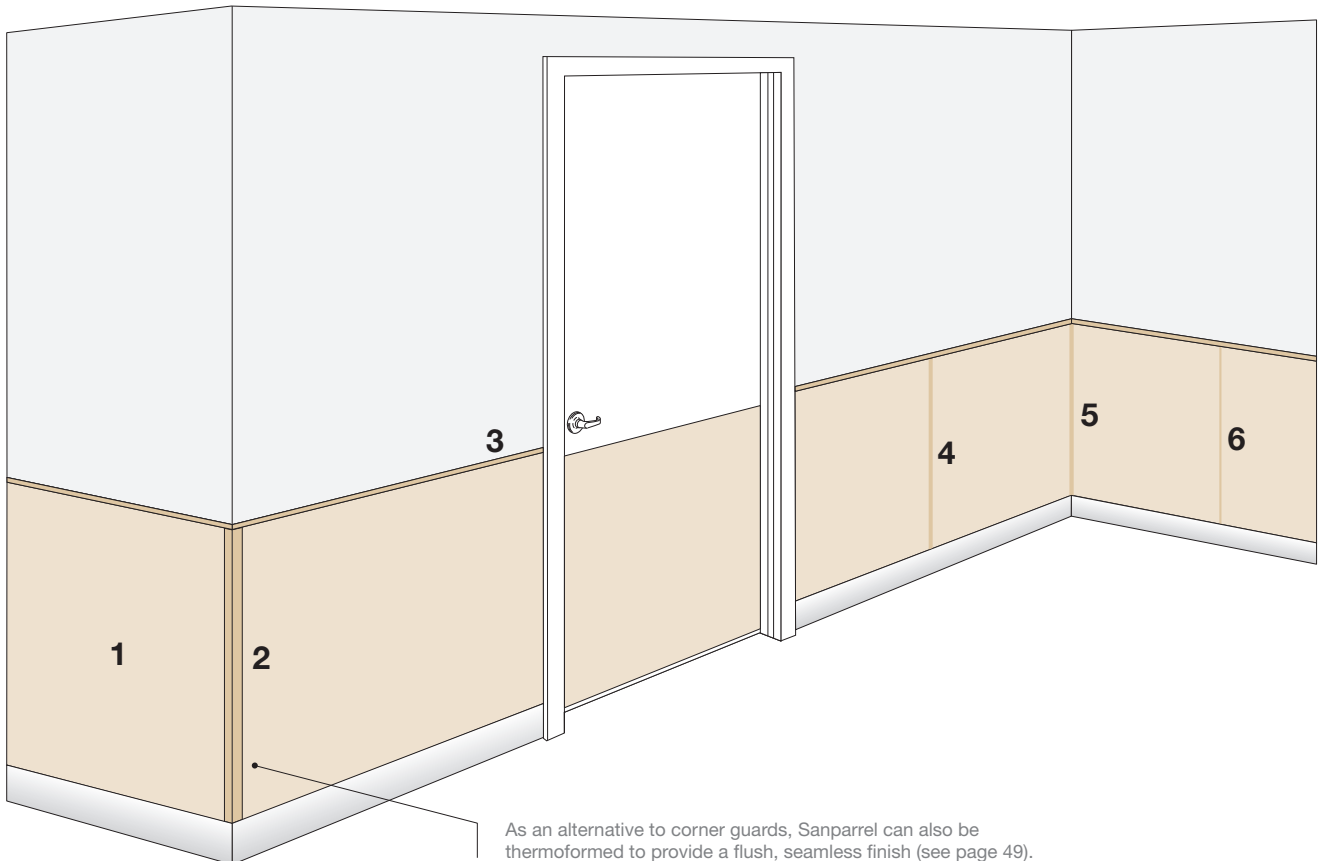
A range of trims is available to provide a neat finish and to allow for minor expansion and contraction. The range includes top caps, divider bars and inside corners (as illustrated below). Outside corners can be finished using corner guards from the InPro range and should be selected dependent on the severity of impact damage expected (see pages 38 to 43 for details).

As an alternative to the finishing trims, colour matched silicone sealant can be used in order to form an impervious seal and can be used in areas where Sanparrel is likely to come into direct contact with water.



Profiles

 <p>1</p>	 <p>2</p>	 <p>3</p>	 <p>4</p>	 <p>5</p>	 <p>6</p>
<p>406 Sanparrel Sheet 1.22m x 2.44m 1.5mm thick</p>	<p>Corner Guard (standard PVC-u surface mount illustrated - see pages 38 to 43)</p>	<p>407 Top Cap 2.44m</p>	<p>408 Vertical Divider Bar 2.44m</p>	<p>409 Inside Corner 2.44m</p>	<p>581 Silicone Sealant</p>



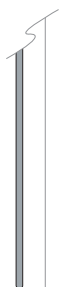
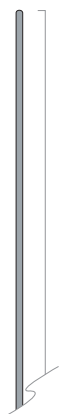
Sanparrel™ Rubrails



Sanparrel™ PVC-u rubrails are cut from sheet material and are bevelled on the top and bottom edges for a smooth, neat finish. Rubrails offer a cost effective solution to protecting walls along their length at the point where impact and abrasion is likely to occur.

Profiles

- Supplied in 2.44m lengths in standard heights of 100mm to 1200mm in 50mm increments (special heights available on request)
- Rubrails can also be produced to bespoke designs through the versatility of cutting (see opposite).
- For lead times or quotations contact Gradus Technical Services on 01625 428922.



Heights:
100mm to 1200mm
in 50mm increments
(special heights available on request)

Lengths:
2.44m

Thickness: 1.5mm



Sanparrel™ Bespoke Solutions



Sanparrel™ sheet offers excellent flexibility through the versatility of cutting or forming into bespoke designs or profiles, allowing functionality to be combined with aesthetics and offering an endless range of design possibilities.

Cutting & Forming

- The extensive colour palette allows Sanparrel to be cut to create a wide variety of effects, from corporate logos in reception areas and themed rubrails for hotels to educational designs for classroom walls and decorative signage.
- Sanparrel™ can be formed into a variety of profiles, with the most frequently used profiles being 'L' and 'U' shapes. 'L' profiles can be used as bespoke corner guards, door edge and door frame protectors (see page 54), whilst 'U' profiles are often used for column protection or to protect nib end-walls.
- For lead times and quotations for bespoke cutting and forming, contact Gradus Technical Services on 01625 428922.

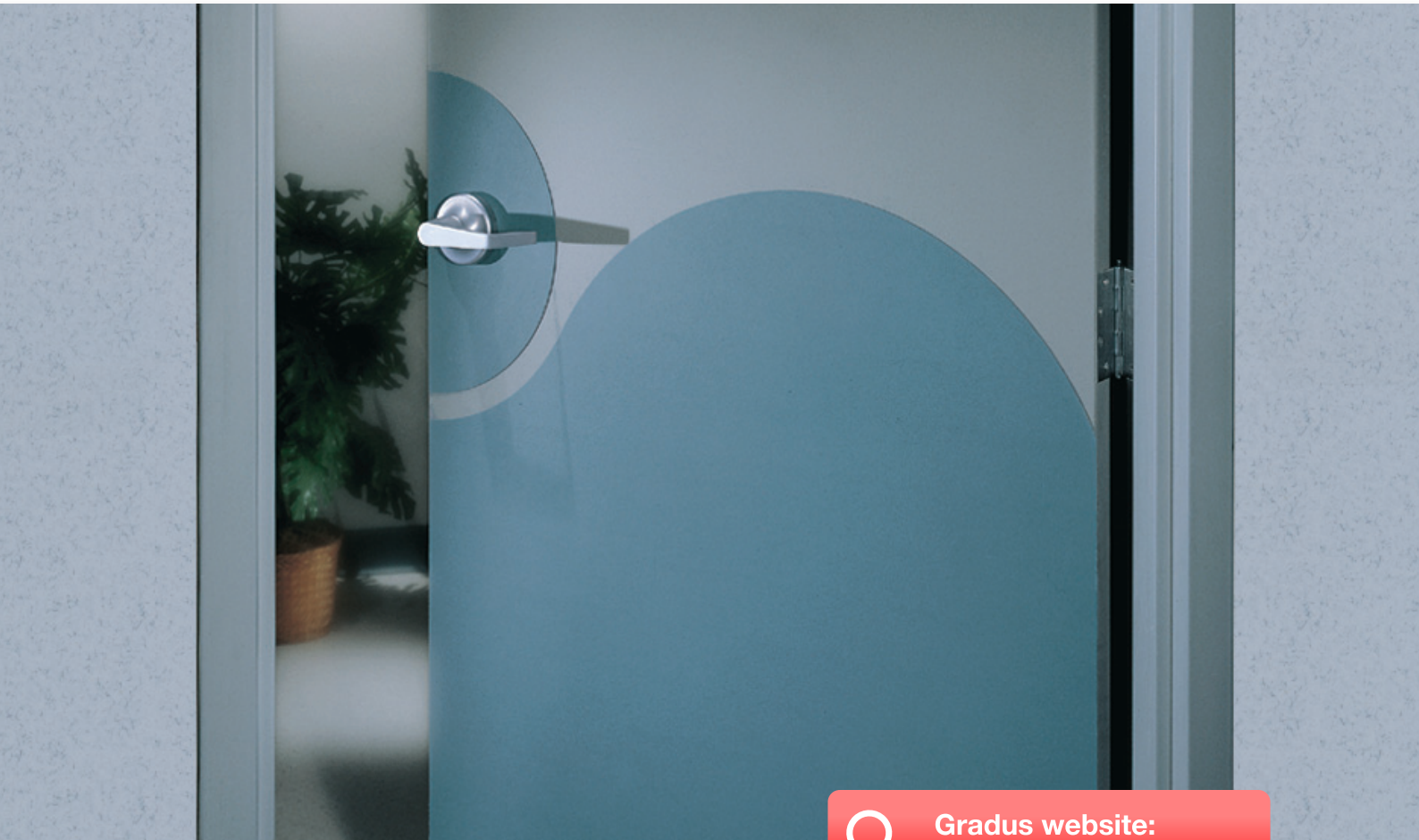




Door Protection

Information on all aspects of Door Protection including Face, Edge and Frame Protection.

Door Face, Edge & Frame Protection



Gradus website:
www.gradusworld.com

Door Faces, Edges & Frames are vulnerable to damage due to the constant flow of pedestrian and wheeled traffic passing through. A variety of door protection products is available to prevent damage, conceal existing damage and highlight the door and door furniture, to assist the visually impaired and to meet guidelines in BS8300:2009 + A1:2010 and Approved Document M (2004) (see pages 70 to 73).

Profiles

- Sheet format for cutting or forming into push plates, kickplates, door protection, cladding and bespoke solutions. Tested in accordance with EN ISO 11925-2:2002 and EN 13823:2002 and classified according to EN 13501-1:2002 as – Reaction to Fire classification: B - s3, d0. Tested as resistant to chemicals, bacteria and fungal growth (page 79)
- Door frame guards
- Door edge guards
- Designed for use on internal vertical surfaces

Information:

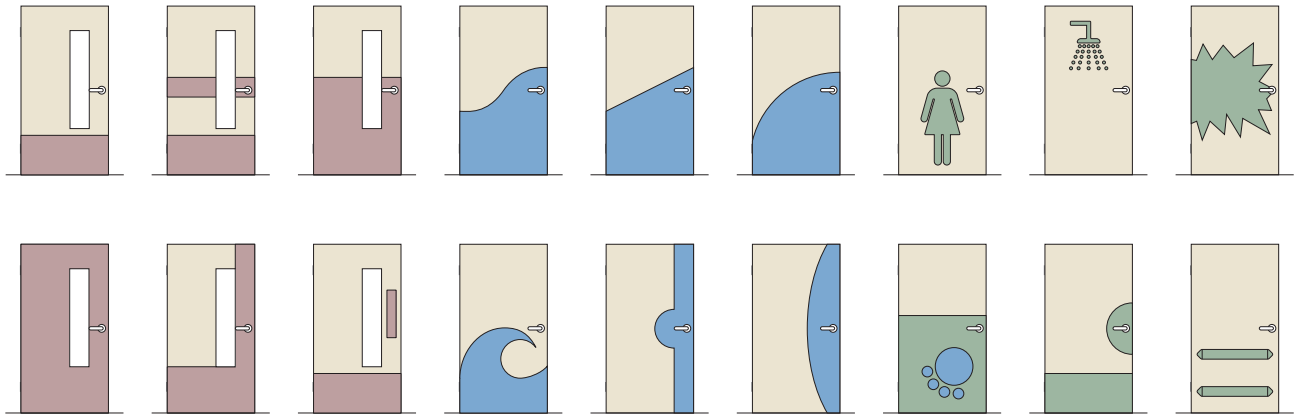


- 30 colour options. See pages 16 to 17 for details, Light Reflectance Values (LRVs) and NCS references
- Rapid Response 24 hour availability on all colours (sheet only - lead times may apply to cut and formed products dependent on quantity and requirements)
- Visit: www.gradusworld.com to download: AutoCAD drawings, Gradus & NBS Specifications, Cleaning & Maintenance, Installation Guidelines and Health & Safety Data Sheets
- For information on stainless steel kickplates and door edge protectors see page 64

Door Face Protection - typical examples



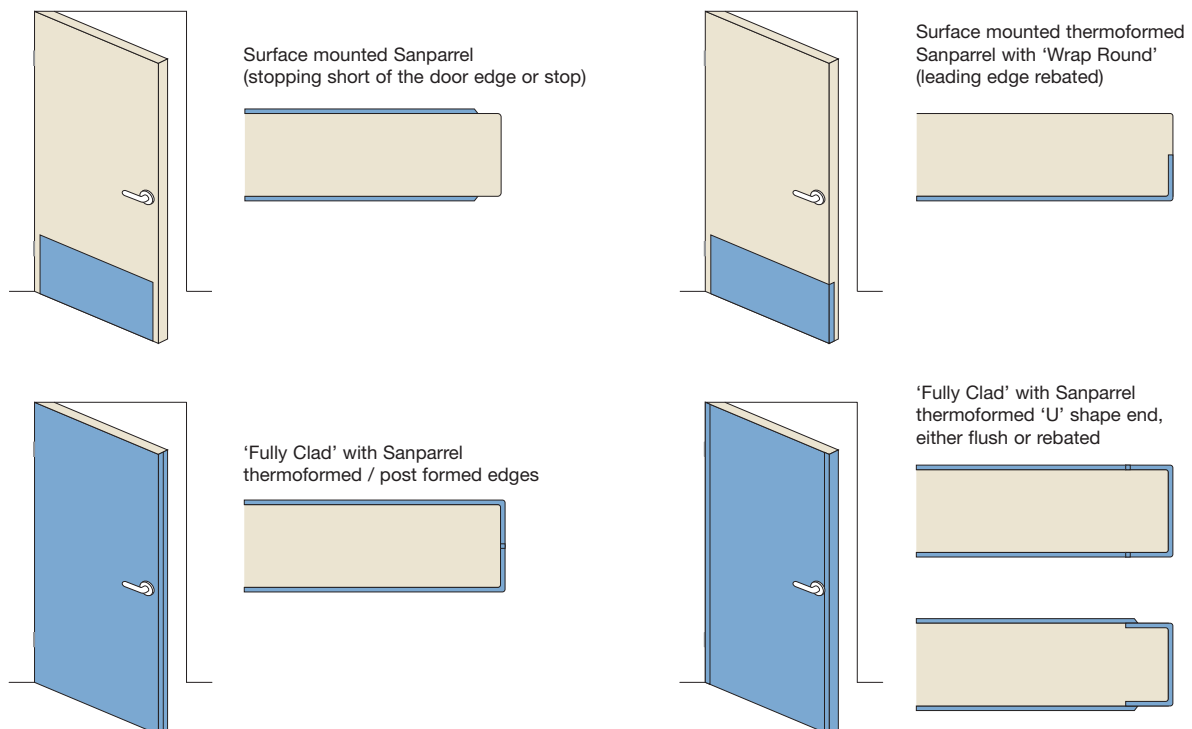
Sanparrel kickplates and pushplates provide protection to doors from damage such as scrapes and dents caused by wheeled and general traffic. Cut from Sanparrel sheet (2440mm x 1220mm), these products are 1.5mm thick, produced to individual size requirements and bevelled on the edges to provide a smooth and safe finish. Alternatively the protection panels can be cut into the base material whether that be contrasting Sanparrel or rebated into the timber by the door manufacturer.



Typical examples shown, contact Gradus Technical Support on 01625 428922 to discuss bespoke options.

Door Face & Edge Installation Options

Illustrated below are several installation methods, ranging from a surface mounted option to fully clad door sets. Sanparrel can be applied to new doors by the door manufacturer or by a contractor as part of building/refurbishment works (for stainless steel door and edge protection see page 64). The level of protection and specific site conditions will determine which method of installation is most appropriate, together with the provision of intumescent fire and smoke seals for fire rated doors (for fire rated door edge guards see page 56).



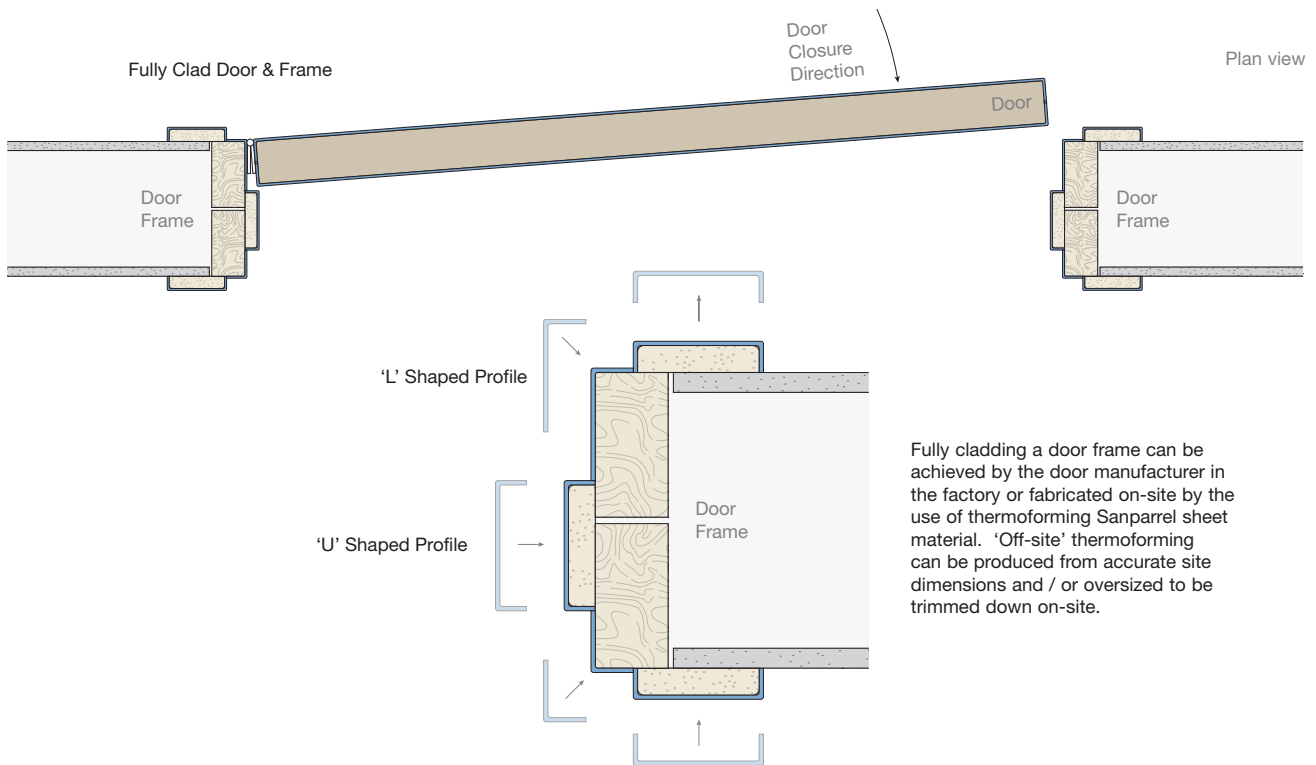
- The above layouts are illustrated for non fire rated doors.
- For fire doors intumescent fire and smoke seals need to be rebated into the door or frame, by the door manufacturer.

Door Frame Protection (Fully Clad)



Sanparrel™ sheet offers excellent flexibility through the versatility of forming into bespoke profiles, allowing functionality to be combined with aesthetics and offering an endless range of cladding possibilities, to protect as well as offering tonal contrast to aid the visually impaired (see pages 70 to 73 for guidance).

- Sanparrel can be formed into a variety of profiles, with the most frequently used profiles being 'L' and 'U' shapes. These profiles can be used to clad a door frame by the door manufacturer, or on site with the use of thermoformed sections
- For lead times and quotations for bespoke forming, contact Gradus Technical Services on 01625 428922

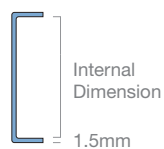


'U' or 'L' shaped profiles

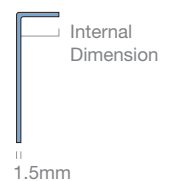
The specific internal dimensions are required to produce thermoformed sections which can fully clad a door frame, including the door stop and architrave.



'U' shaped profiles



'L' shaped profiles



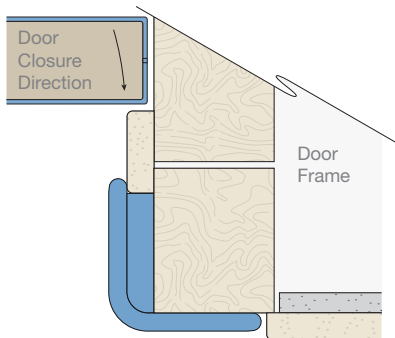
Door Frame Guards



Door Frames are potentially subject to high levels of impact from the funnelling effect the door opening creates. With the infinite permutations of different sizes, shapes and position of door frames, door stops and architraves, each product solution will be project specific.

The primary function of door frame guards is for protection. However the opportunity can be taken to create tonal contrast to assist the visually impaired. To help specifiers and building owners meet their duties under the guidelines in BS8300:2009 + A1:2010 and Approved Document M (2004) see pages 70 to 73.

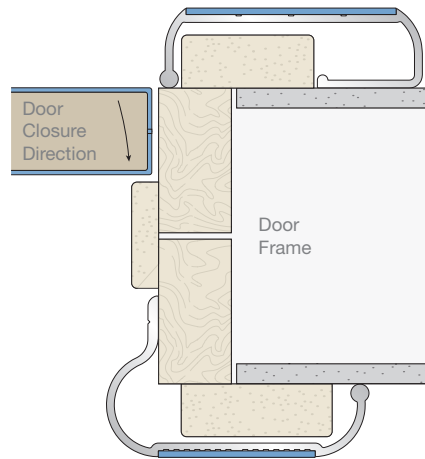
Plan view



1700
High Impact Door Frame Guard
(projecting to protect door stop)

Door Frame Guards <i>Aluminium Retainer with PVC-u Cover (Top / Bottom Caps)</i>		
Code	Length	Width
1736	910mm	75mm x 75mm
1748	1220mm	75mm x 75mm
1796	2440mm	75mm x 75mm

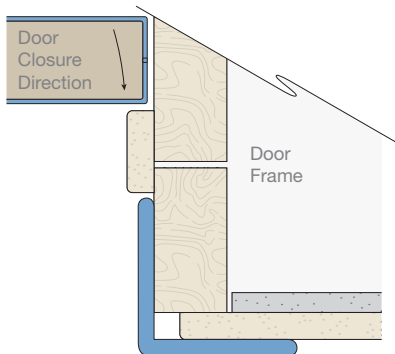
RFG (Pull Side)
Intastop - Rigid Door Frame Guard



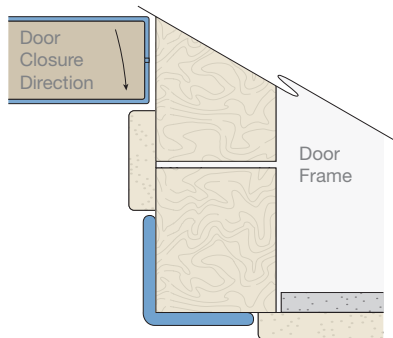
RFG (Push Side)
Intastop - Rigid Door Frame Guard



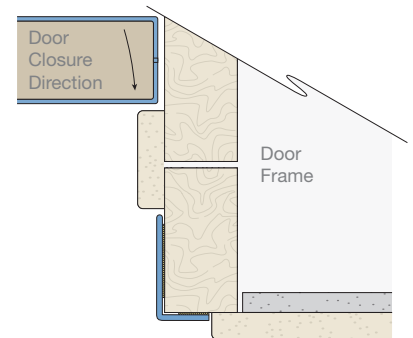
Intastop - Rigid Frame Guards <i>Aluminium door frame guard with PVC-u centre panel</i>		
Code	Length	Width
FRI/01/AA/2.1 - Push Side	2100mm	80mm
FRI/02/AA/2.1 - Push Side	2100mm	100mm
FRI/03/AA/2.1 - Pull Side	2100mm	50mm
FRI/EC - End Cap	Left / Right	



150
High Impact Corner Guard
(fitted over frame architrave leaving gap)
see page 39 for full product details



160
High Impact Corner Guard
(fitted between door stop & architrave)
see page 39 for full product details



Surface Mount
Standard Corner Guard
(trimmed down to suit site dimensions)
see page 42 for full product details