



Acrovyn® 4000 'Imagine' Panels Branding Solutions



IMAGINE. PROMOTE. PROTECT.

IN-STORE BRANDING SOLUTIONS BY C/S

Introducing C/S Acrovyn® 4000 'Imagine' Panels

In-store branding is a key element of your customer's experience. Traditional brand wall solutions such as printed boards and laminates quickly get damaged, scratched, fade and turn a branding opportunity into a branding nightmare.

That's why we've developed C/S Acrovyn® 4000 'Imagine' Panels. Designed for the tough retail environment, your brand walls now promote your brand and protect your store for longer. Much longer.



PROMOTE YOUR BRAND

- stand out from the retail crowd
- vibrant colours and clear images
- complete design flexibility
- high resolution embedded image technology

PROTECT YOUR STORE

- tough impact resistant Acrovyn®
- light fast and scratch resistant
- pvc free and sustainable material
- image panels protect your store

C/S ACROVYN 4000 'IMAGINE' PANELS

"Imagine the possibilities with embedded images in Acrovyn"

- High quality photo reproduction
- Impact resistant Acrovyn® sheet
- Scratch & chip resistant surface
- Complete design flexibility of image
- Up to 2400mm x 1220mm sheet size
- Approved Document B fire compliant
- Protect corporate branding



IMAGINE. PROMOTE. PROTECT.

Acrovyn® 4000 'Imagine' Panels are as durable and scratch resistant as regular Acrovyn® Panels, with the added benefit of full photo reproduction, giving you the freedom to design your own impact protection panels.

C/S Acrovyn® 4000 'Imagine' Panels offer bespoke protection for your internal surfaces, giving you the flexibility to embed any image, any size into Acrovyn Sheet. Helping you make an impact on your customers, instead of your walls and corporate imagery.

Acrovyn® 4000 'Imagine' Panels don't chip, dent, scratch or fade, leaving your walls and images intact.

The complete range of C/S products



C/S Acrovyn®
Wall, Door and Corner Protection



C/S Wallglaze®
Specialist Coatings for Walls and Floors



C/S Pedisystems®
Entrance Flooring Systems



C/S Allway®
Expansion Joint Covers



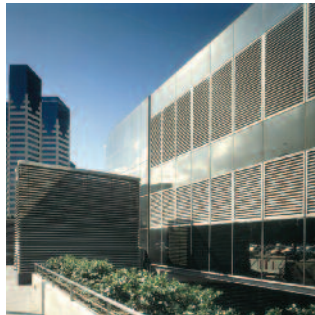
C/S Airfoil®
Solar Shading Systems



C/S Supertrak®
Cubicle Curtain Track



C/S Explovent®
Explosion Venting Systems



C/S Louvre®
Building Ventilation Systems



Construction Specialties (UK) Limited

1010 Westcott Venture Park
Westcott
Buckinghamshire HP18 0XB
Tel: +44 (0)1296 652800
Fax: +44 (0)1296 652888
Email: info@c-sgroup.co.uk
www.c-sgroup.co.uk

C/S worldwide operations

- UK (also servicing: Republic of Ireland, Scandinavia, Malta, Portugal, Iceland)
- France
- Germany
- Austria
- Italy
- Spain
- Poland
- USA
- Canada
- Australia
- Singapore
- Hong Kong
- Taiwan
- UAE
- Uruguay



c-sgroup.co.uk/facebook



twitter.com/csgronews

