



Supporti elastici estremamente versatili per l'isolamento di shock e vibrazioni ed il controllo del rumore. Le serie brevettata AMS è progettata per lavorare in compressione, taglio e perfino in trazione quando richiesto. Il design sobrio e versatile li rende adatti a un'ampia varietà di applicazioni industriali. I componenti metallici impiegati offrono, con la loro forma, un'eccellente protezione da shock e vibrazioni in ambienti particolarmente difficili dal punto di vista ambientale e/o applicativo .

*Extremely versatile mounts for vibration, shock, noise control, Fibet AMS patented series are designed to work in compression, shear and even in traction when required. Their simple design and construction permit their use in a wide variety of industrial applications. Metal caps offer excellent shock and vibration protection in hostile environments.*



#### CAMPI D'IMPIEGO - APPLICATIONS

- Apparecchi di misura
- Strumentazioni
- Piccole macchine in genere
- Motori elettrici
- Pompe
- Radiatori
- Measurement equipment
- Instruments
- Small machinery
- Electric engines
- Pumps
- Radiators

#### REALIZZAZIONE STANDARD - STANDARD PRODUCTION

Rondelle: Acciaio DD12 o DD13 (UNI EN 10111)

Dadi: Classe 4      Viti: Classe 4.8

Gomma naturale NR

Zincatura secondo normativa CEE esente CROMO VI, colore bianco

*Washers: DD12 or DD13 steel (UNI EN 10111)*

*Nuts: Resistance class 4      Screws: Resistance class 4.8*

*Natural rubber NR*

*Zinc plated in accordance with CE standards CHROME VI free, white*

#### OPZIONI & ACCESSORI - OPTIONS & ADDITIONAL PARTS

Realizzazione in gomma di durezza e tipologia differente

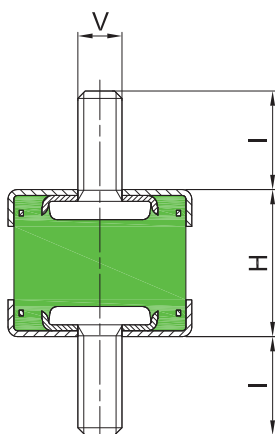
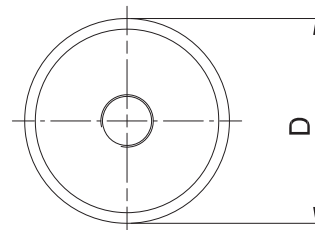
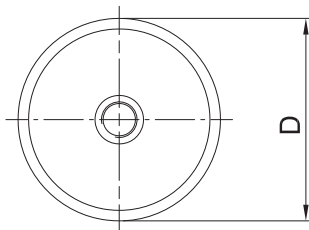
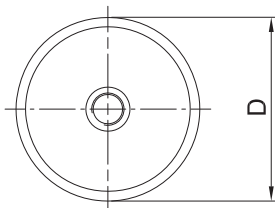
*Alternative elastomeric hardness and compounds available*



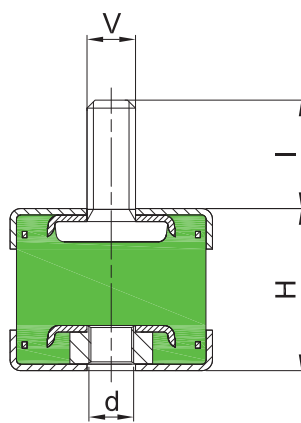


TIPO AMS

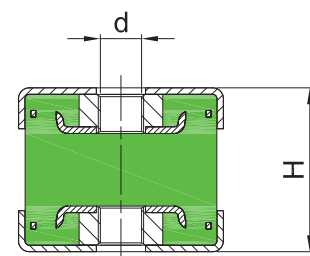
TYPE AMS



Tipo 1  
Type 1



Tipo 2  
Type 2



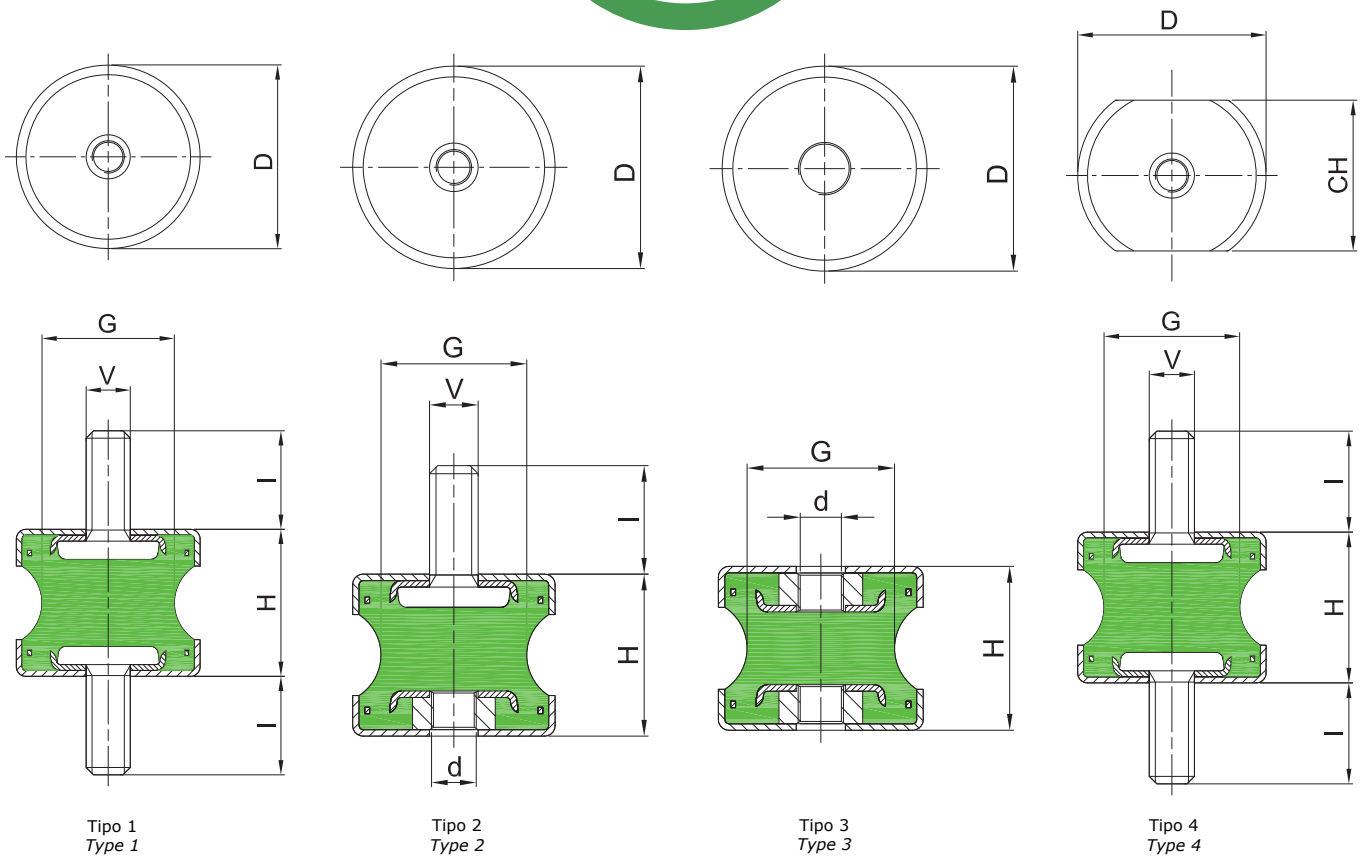
Tipo 3  
Type 3

Codice	D	H	V x l	d	Tipo
Item	D	H	V x l	d	Type
AMS2515VV10	25	15	M6X10	-	1
AMS2520VV13	25	20	M6X13	-	1
AMS2525VV10	25	25	M6X10	-	1
AMS4030VV16	40	30	M8X16	-	1
AMS4030VV23	40	30	M8X23	-	1
AMS5020VV27	50	20	M10X27	-	1
AMS5030VV27	50	30	M10X27	-	1
AMS2520VD10	25	20	M6X10	M6	2
AMS2520VD13	25	20	M6X13	M6	2
AMS5030VD27	50	30	M10X27	M6	2
AMS2520DD06	25	20	-	M6	3
AMS4030DD08	40	30	-	M8	3
AMS5030DD10	50	30	-	M10	3



TIPO AMS

TYPE AMS



Tipo 1  
Type 1

Tipo 2  
Type 2

Tipo 3  
Type 3

Tipo 4  
Type 4

Codice	D	H	G	V x l	d	CH	Tipo
Item	D	H	G	V x l	d	CH	Type
AMS2520GVV13	25	20	18	M6X13	-	-	1
AMS4030GVVP16	40	30	15	M8X16	-	-	1
AMS4030GVVP23	40	30	15	M8X23	-	-	1
AMS4030GVVG16	40	30	27	M8X16	-	-	1
AMS4030GVVG23	40	30	27	M8X23	-	-	1
AMS2820GVV13	28	20	18	M6X13	-	25	4
AMS2520GVD13	25	20	18	M6X13	M6	-	2
AMS4030GVDP23	40	30	15	M8X23	M8	-	2
AMS4030GVDP23	40	30	27	M8X23	M8	-	2
AMS2520GDD06	25	20	18	-	M6	-	3
AMS4030GDDP08	40	30	15	-	M8	-	3
AMS4030GDDG08	40	30	27	-	M8	-	3