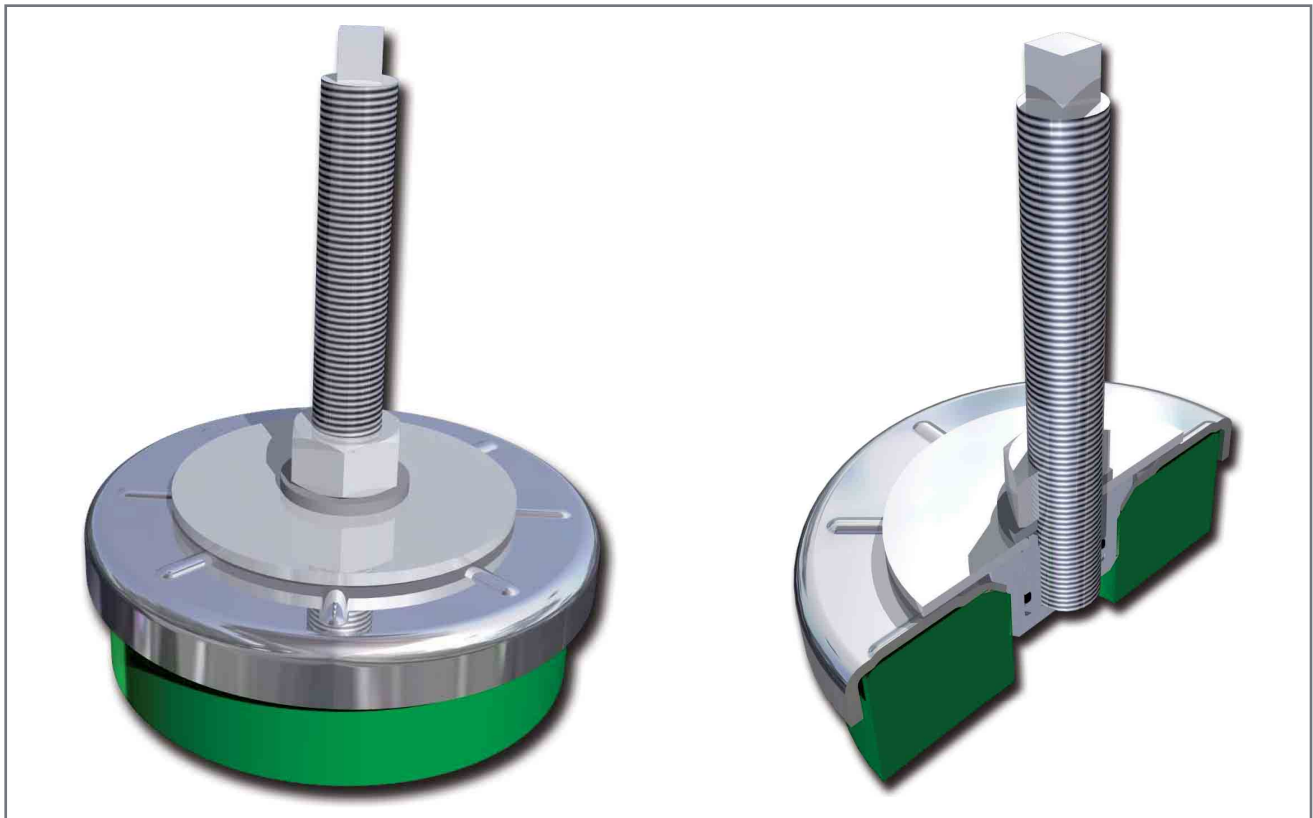




Serie di supporti utilizzati quali appoggi per macchine ed impianti vari.  
Diametri da 80 a 200 mm con carichi applicati da 500 daN a 4.000 daN.

*Series of mounts utilised as support for various plant and machinery.  
They come in various size, from 8 to 200 mm diameter, with loads applied  
from 500 daN to 4.000 daN.*



#### CAMPI D'IMPIEGO - APPLICATIONS

- Gruppi elettrogeni
- Motori
- Macchine utensili
- Pompe
- Impianti speciali
- Impianti di ventilazione e condizionamento
- *Gensets*
- *Engines*
- *Tooling machinery*
- *Pumps*
- *Special equipment*
- *HVAC*

**REALIZZAZIONE STANDARD - STANDARD PRODUCTION**

Piastre: Acciaio DC04 (UNI EN 10130)

Rondelle: Acciaio DD12 (UNI EN 10111)

Dadi: Classe 4      Perni: Classe 4.8

Inserti: 11SMnPb 37 (UNI EN 10087)

Gomma naturale NR

Zincatura secondo normativa CEE esente CROMO VI, colore bianco

Tolleranza sulla rigidezza +/- 20%

*Plates: Steel DC04 (UNI EN 10130)*

*Washers: Steel DD12 (UNI EN 10111)*

*Nuts: Resistance class 4      Bolts: Resistance class 4.8*

*Other metal components: 11SMnPb 37 (UNI EN 10087)*

*Natural rubber NR*

*Zinc plated in accordance with CE standards CHROME VI free, white*

*Stiffness tolerance +/- 20%*

**OPZIONI & ACCESSORI - OPTIONS & ADDITIONAL PARTS**

Realizzazione in gomma NEOPRENE CR e Antiolio NBR

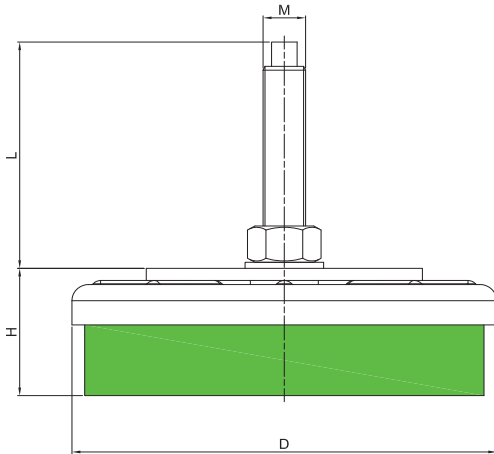
Realizzazione dadi e perni in classe di resistenza piu alta

Realizzazione con perni speciali a disegno

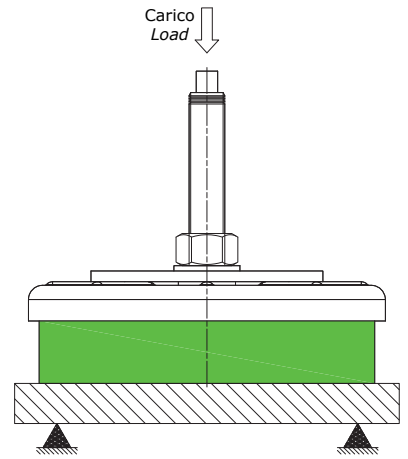
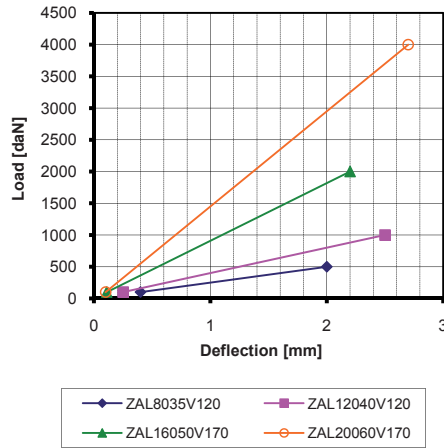
*NEOPREN CR and Anti-oil NBR version*

*Bolt and nuts higher class resistance version*

*Bolt specific length in accordance to customer's drawing*



Load/Deflection Chart for ZAL MOUNTS



Codice	Durezza (IRHD)	D	H min	H max.	M	L min	L max	Rigidezza Media (daN/mm)	Carico Max (daN)	Defles. Max (mm)
Item	Hardness (IRHD)	D	H min.	H max.	M	L min	L max	Average Stiffness (daN/mm)	Max Load (daN)	Max Deflec. (mm)
ZAL8035V120	80	80	35	46	M12X1,25	87	98	250	500	2,0
ZAL12040V120	80	120	40	51	M16X1,5	93	104	400	1000	2,5
ZAL16050V170	80	160	50	63	M20X1,5	125	138	900	2000	2,2
ZAL20060V170	80	200	60	73	M20X1,5	125	138	1500	4000	2,7