

indicators
totalisers
monitors
controllers
transmitters
flow computers
batch controllers
loading systems

FOR

flow
level
pressure
temperature

PRODUCT SELECTION GUIDE

Features

- Ten models, each with its own level of application-specific features.
- Seven types of enclosure for field, wall and panel-mount applications.
- Preset value, batched quantity and flowrate can be displayed simultaneously.
- Multiple preset values, product names, totalisers, batch counters.
- Inputs for: pulse, coil, Namur, (0)4-20mA and (0)2-10V DC.
- Relay outputs for valve / pump control, alarms and status.
- Scaleable transistor outputs for pulse re-transmission.
- Various inputs for remote control, even for preset batch selection.
- Process monitoring alarm functions: high / low flowrate, no-flow, maximum batch size etc.
- Self learning overrun correction to obtain high batch accuracy's.
- Many power solutions available.
- Temperature or volumetric correction.
- Mass flow calculation.
- Modbus communication RS232/RS485.
- Intrinsically Safe or explosion proof enclosure options.

Introduction

This product group deals with batching, filling and dosing liquid products.

Three product ranges

- The 100-series is a versatile and feature packed product range housed in a weather proof aluminium field enclosure which is both compact and extremely rugged. This is suitable for wall, pipe or panel-mount applications and is battery powered as standard. Further options to power the unit are built-in and Intrinsically Safe and EExd enclosure versions are available as part of the range.
- The 200-series is a high quality 'panel-mount only' unit in standard DIN-enclosure configuration. The functionality is almost identical to the 100-series with one major difference. Most 100-series add-on options come as standard in the 200-series products. All models can be supplied in an EExd enclosure or Intrinsically Safe.
- The 300-series distinguishes itself through its' full 20-key keyboard and more powerful capabilities which includes 80-character alphanumeric display,



numerical keyboard, nine external status inputs and dual batch-control. This product is supplied in a wall-mount enclosure as standard. However, a panel-mount and very compact EExd enclosure are available as options.

Operation

Clear operator information is a key-feature of these products. Essential information is displayed as plain text, e.g. "Batch too large" and not as mysterious abbreviations. The unit "communicates" with the operator using clear text, ensuring that mistakes are kept to a minimum. Moreover, the 300-series offers you information in a choice of four different languages. Configuration of the unit is achieved entirely through the software. There are no sensitive DIP-switches, you simply select for example:

"Flowmeter" as main function, after which you can select "Coil-input" etc. All settings are stored in EEPROM or NVRAM memory ensuring that information and running totals are not lost in the event of power failure

Inputs

The 100- and 200-series will accept pulse, coil, Namur, (0)4-20mA or (0)2-10V DC signals and have a few status inputs. The 300-series will interface with pulse and Namur signals and has nine extra status inputs supplying external information and remote control features.

Outputs

All units have two or more outputs to control valves, pumps or relays. The functionality of the outputs are product dependent but they can be used for one or two



stage valve control, pump start, fail-safe alarm output etc. The outputs can be make-and-break relays, solid-state relays or powerful transistorized relays. With the loading system model 0326, smooth proportional valve control is achievable via the 4-20mA analog output.

Options

Many options exist for these ranges. Of particular interest is the availability of Intrinsically Safe versions. A unique feature of the 100-series is the availability of RS232/RS485 communications in a battery powered unit.

Summary of main features

- Multiple batch-sizes: four or fourteen preset quantities can be pre-programmed. Selection with arrow keys or external inputs.
- Overrun correction: automatic correction of the overrun leakage at the end of a batch, as a result of valve / system performance.
- Process logging: the quantity of product delivered and the number of realized batches registered.
- Flowrate: Indication of the instantaneous flowrate during process, for example, L/min.
- Two-stage control: function to gently start and/or stop a batch process using low flows. The main batch will be executed at maximum capacity.
- No-flow monitoring: alarm register of missing pulses during the batch as a result of: broken cables or pump failure etc.
- Minimum / maximum batch size: protection against incorrect operator entry of batch size.
- Maximum total quantity: the max holding capacity of the container can be set ; an alarm is triggered when this quantity has been dispensed.
- Maximum number of batches: the required quantity of correct batch operations; an alarm will be triggered when reaching this value (the system will count for you!).
- Leakage: flow detection during steady state; an alarm is triggered if a valve doesn't close, for example.
- Maximum overrun: to monitor the wear and tear on your valves.
- Maximum batch time: in automated systems, it is important a batch is executed before a new start-command is given; if not an alarm is triggered.
- Flowrate monitoring: minimum and maximum flowrates are monitored. An error situation can be ignored for a set period of time.
- External alarm: an external input to connect to a security system. It will interrupt a batch immediately.
- Power failure: the alarm output relay will be switched off, and the current batch will pause. All process info is stored in memory for resumption of batch when required.
- Auto-restart: cycling function to batch a "fixed" quantity time after time; a delay period of maximum 15 minutes between batches.
- Linearisation: to enhance flowmeter accuracy, the flowrate/totalizer is able to linearise the flow curve. 15 linearisation points can be entered with interpolation between them.
- Flowrate analog output: the 4mA and 20mA can be scaled to any given flowrate, e.g. 200 L/min – 1200 L/min.
- Alarm output: the relay output can be set to indicate an alarm-status or power loss.
- Dual batch-control: two separate batches can be run simultaneously or batched one after another.
- High speed controller: for packaging industry, batch cycles below one second require: fast inputs, averaging and fine-tune functions.
- Quadrature input: dual pulse input from a single flowmeter to detect the direction of flow and to monitor pulse integrity for custody transfer applications.
- Volume compensation: net volume correction of the measured flow based on a temperature/expansion relationship.
- Mass flow calculation: a product density table can be entered to calculate the mass flow. Five temperature/density entries can be stored with interpolation between points.
- Intrinsically Safe: all models can be located in hazardous areas or be supplied in an EExd enclosure.
- Password: all settings can be lock-out pass code protected. Available for all products.

Please see the typical product information 100-, 200- and 300-series in the front of this product selection guide.

Product overview

STANDARD BATCH-CONTROLLER		0130 - 0230
<p>Product features</p> <ul style="list-style-type: none"> • preset value • overrun correction • two-stage control • pulse output • Intrinsically Safe option <p>Operator information</p> <ul style="list-style-type: none"> • preset value - can be entered • quantity batched • total - resetable • accumulated total • measuring units 	<p>Description</p> <p>The Models 0130 and 0230 are straight-forward batch-controllers offering exactly what is required for many applications. The operator can enter a preset value easily or execute repeated batches. During the batch, the preset value is displayed as well as the batched quantity and units of measurement. The automatic overrun correction will ensure an accurate result.</p> <p>The large 17mm (0,67") display segments display the running batch quantity and can be set to count up or count down. The accumulated total can register up to and including 11 decimal places.</p> <p>The relay outputs can be set for pulse output or used for one or two-stage batch control. The pulse output mirrors the count on the display.</p> <p>With option "XI" the units can be used in hazardous areas: to classification EEx ia IIB T4.</p> <p>Note: further options are also available.</p>	
INPUT SIGNAL	P: PULSE, COIL, NAMUR	A: (0)4-20mA
REMOTE INPUTS	START, STOP, CONTINUES (0130: ONE DEFINABLE INPUT ONLY).	
MONITORING / ALARM FUNCTIONS	MAXIMUM BATCH-SIZE.	
		U: (0)2-10Vdc

BATCH-CONTROLLER WITH FLOWRATE CALCULATION AND ANALOG OUTPUT		0131 - 0231
<p>Product features</p> <ul style="list-style-type: none"> • 4-20mA output acc. flowrate • overrun correction • two-stage control • pulse output • Intrinsically Safe option <p>Operator information</p> <ul style="list-style-type: none"> • preset value - can be entered • quantity batched • flowrate • total - resetable • accumulated total • measuring units 	<p>Description</p> <p>The Models 0131 and 0231 incorporate in addition to the standard functions, a 4-20mA output proportional to the measured flowrate.</p> <p>The operator can enter a preset value easily or execute repeated batches. During the batch, the preset value is displayed as well as the batched quantity, flowrate and measuring unit. The running batch quantity can be set to count up or count down. With the automatic overrun correction an accurate result will be achieved.</p> <p>The outputs can be set for pulse output, one or two-stage control. The pulse output, mirrors the count on the display. The analog output signal is generated in proportion to the flowrate. Both pulse and analog outputs can be fine-tuned, making this product a valuable batch-controller and transmitter.</p> <p>With option "XI" the units can be used in hazardous areas: to classification EEx ia IIB T4.</p> <p>Note: further options are also available.</p>	
INPUT SIGNAL	P: PULSE, COIL, NAMUR	A: (0)4-20mA
REMOTE INPUT	START, STOP, CONTINUES (0131: ONE DEFINABLE INPUT ONLY).	
MONITORING / ALARM FUNCTIONS	MAXIMUM BATCH-SIZE.	
		U: (0)2-10Vdc

STANDARD DISPENSER

Product features

- undefined batch process
- control outputs and / or pulse output in relation to total
- Intrinsically Safe option

Operator information

- start and stop key
- quantity batched
- total - resetable
- accumulated total
- measuring units

Description

These models are dispensing units, typically used in delivery applications where the desired quantity is unknown.

When the start button is pressed, the relays are switched and the batch quantity is reset to zero. The "batch" runs until the process is interrupted with the "stop-button".

The running total as well as the instantaneous flowrate are displayed. The accumulated total can register up to and including 11 decimal places.

Two relay outputs can be set for pulse output or used to control other devices. The pulse output, mirrors the count on the display.

With option "XI" the units can be used in hazardous areas: to classification EEx ia IIB T4.

Note: further options are also available including: ticket-printer driver.

INPUT SIGNAL

P: PULSE, COIL, NAMUR

A: (0)4-20mA

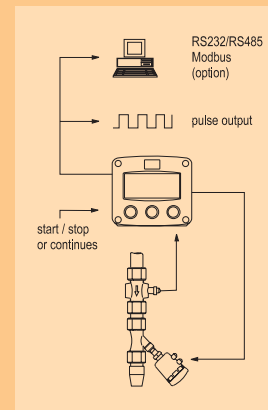
REMOTE INPUT

START, STOP, CONTINUES (0133: ONE DEFINABLE INPUT ONLY).

MONITORING / ALARM FUNCTIONS

MAXIMUM DELIVERY QUANTITY.

0133 - 0233



U: (0)2-10Vdc

BATCH CONTROLLER WITH TEMPERATURE COMPENSATION*

Product features

- volume and density correction
- mass flow calculation
- quadrature pulse input
- PT100 / 4-20mA temperature input or density input
- linearisation of the flow curve
- overrun correction
- pulse output in relation to total
- 4-20mA output acc. net flow
- high/low flowrate alarm output

Operator information

- gross or net batched quantity preset value - can be entered
- gross and net flowrate
- net total - resetable
- accumulated net total
- actual product temperature
- high/low flow alarm set-points
- measuring units

Description

The batch-controller Model 0235 calculates the net flow or mass flow for general liquids, petroleum products or LPG. Batch selection can be based on gross or net quantity.

For volume correction to 15°C or 60°F, the actual product temperature will be measured with a PRTD or 4-20mA temperature sensor. The conversion conforms to API standards for all Petroleum products and LPG.

Density correction for the mass flow calculation is achieved by measuring the actual temperature or by using a density meter.

For custody transfer applications, quadrature input as well as 15 point linearisation of the flow curve is available.

The operator can enter a single preset value or execute repeated batches. During the batch, the preset value is displayed as well as the batched quantity, flowrate and measuring unit. The running batch quantity - gross or net - can be set to count up or count down. With the automatic overrun correction an accurate result will be achieved.

The outputs can be set as pulse output, one or two-stage control or as alarm outputs. With the flowrate set points, the flow is monitored for low and high flow and includes an alarm-ignore-time to start-up the batch.

An industry standard 4-20mA analog output is generated in relation to the net flowrate, while the pulse output will mirror the count on the display.

Note: further options are also available.

INPUT SIGNAL

P: PULSE, COIL, NAMUR

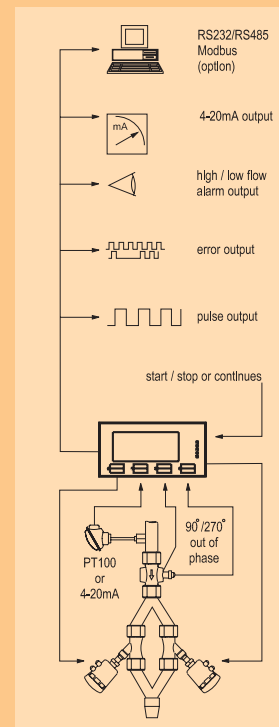
REMOTE INPUT

START, STOP, CONTINUES.

MONITORING / ALARM FUNCTIONS

MAXIMUM BATCH-SIZE, MINIMUM AND MAXIMUM FLOWRATE, PULSE INTEGRITY.

0235



* Future product - contact factory for availability.

HIGH-SPEED BATCH-CONTROLLER FOR APPLICATIONS IN PACKAGING / FILLING INDUSTRY

0302

Product features

- batch-cycles from 0.5 seconds
- eight preset-values
- container/bottle detection
- averaged overrun correction
- fine-tune function
- two-stage control
- process logging
- product-names programmable
- CIP control

Operator information

- product name
- preset value - can be entered
- quantity batched
- total - resetable
- batch counter - resetable
- fine-tune function
- measuring units

Description

This high-speed batch controller 0302 has been specially developed for applications in the packaging/filling industry with batch cycles from 0.5 seconds.

The overrun correction is provided with averaging facilities since the overrun quantity can be more than 50% of the batched quantity. As the density might change during the process, the operator has the possibility to adjust the batch result slightly with the +/- fine-tune function.

Eight different products can be pre-programmed, each with its own product name like "Yogurt 0.5 liter". For each product, the process time is monitored and the overrun characteristics are stored in memory. Before the operator can select a different product, a confirmation is requested. The product selection and start command can be given by a PLC also.

Additionally, the remote input "package-available" needs to be confirmed before a batch is executed, this detects missing packages/cartons on the conveyer belt.

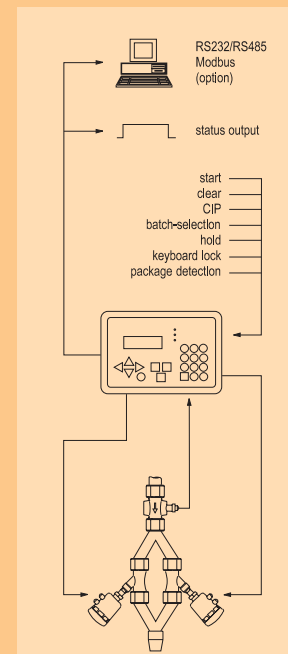
The CIP input will control all relays and will not register the flowmeter signal until normal flow resumes. The display will indicate "CIP control".

For service and maintenance purposes, a log is kept of the number of batches executed as well as operational hours.

The flowmeter input frequency can be extended to 18KHz.

Note: further options are also available which include:

RS232/485 Modbus communication.



INPUT SIGNAL

P: PULSE, COIL, NAMUR

REMOTE INPUT

NINE INPUTS: START, CLEAR, CIP, BATCH SELECTION 1-8, HOLD, KEYBOARD LOCK, PACKAGE DETECTION.

MONITORING / ALARM FUNCTIONS

MAXIMUM BATCH-SIZE, PROCESS TIME.

SEQUENTIAL HIGH-SPEED BATCH-CONTROLLER FOR PACKAGING / FILLING INDUSTRY

0303

Product features

- A, B or A-B-A-B fill control
- batch-cycles from 0.5 seconds
- eight preset-values
- container/bottle detection
- averaged overrun correction
- fine-tune function
- process logging
- product names programmable
- CIP control

Operator information

- product name
- preset value - can be entered
- quantity batched
- total - resetable
- batch counter - resetable
- fine-tune function

Description

The 0303 high-speed batch-controller has been specially developed for applications in the packaging/filling industry with batch cycles from 0.5 seconds. Compared to the 0302, it has the ability to batch with one flowmeter through two different lines. The batch can be executed only with line A or line B or sequential in A - B - A - B order.

For each line, the overrun correction is provided with averaging facilities. As the density might change mid-process, the operator has the facility to adjust the batch-result slightly with the +/- fine-tune function.

Eight different products can be pre-programmed, each with its own product name. For each product, the process time is monitored and the overrun characteristics are stored in memory.

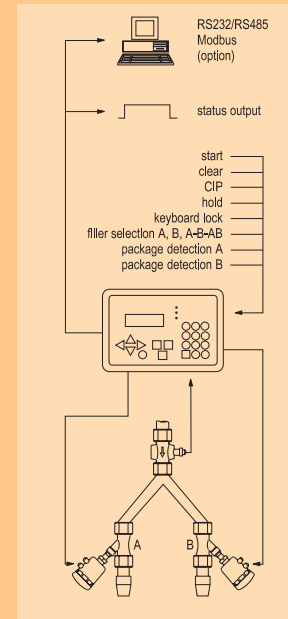
The start command can be given manually or by a PLC, while the status-input "package available" needs to be confirmed before a batch is executed, this is to detect missing packages/cartons on the conveyer belt.

The CIP input will control all relays and will not register the flowmeter signal until normal flow resumes.

The flowmeter input frequency can be extended to 18KHz.

Note: further options are also available which include:

RS232/485 Modbus communication.



INPUT SIGNAL

P: PULSE, NAMUR

REMOTE INPUT

NINE INPUTS: START, CLEAR, CIP, HOLD, KEYBOARD LOCK, PACKAGE A OR B, FILLER A, FILLER B, FILLER A-B.

MONITORING / ALARM FUNCTIONS

MAXIMUM BATCH-SIZE, PROCESS TIME.

STANDARD BATCH-CONTROLLER

Product features

- preset value
- overrun correction
- two-stage control
- power-supply to the flowmeter

Operator information

- preset value - can be entered
- quantity batched and flowrate
- total - resetable
- batch counter - resetable
- measuring units

Description

The Model 0310 is a standard batch-controller, but with a full 20-key numerical keyboard which makes changing the batch quantity very easy. The operator can enter a preset value or execute repeated batches.

During the batch the preset value, batched quantity and flowrate are displayed simultaneously and can be read at a single glance.

The active overrun correction will ensure an accurate result, while the no-flow monitoring function will interrupt the batch in the event of missing pulses.

The two process relays - with make and break contacts - can be set for two stage control with low-flow start and/or low-flow stop. The alarm relay will be switched off in the event of an alarm.

Note: further options are also available.

INPUT SIGNAL

P: PULSE, NAMUR

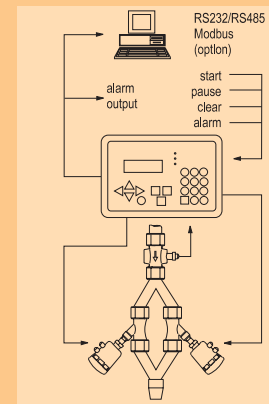
REMOTE INPUT

FOUR INPUTS: START, PAUZE, CLEAR, ALARM.

MONITORING / ALARM FUNCTIONS

NO FLOW, EXTERNAL ALARM, POWER-DOWN.

0310



STANDARD BATCH-CONTROLLER WITH PRINTER DRIVER

Product features

- printer driver + flexible layout
- preset value
- overrun correction
- two-stage control
- power-supply to the flowmeter

Operator information

- preset value - can be entered
- quantity batched and flowrate
- total - resetable
- batch counter - resetable
- measuring units

Description

Compared to the 0310 this batch-controller has the same degree of functionality but with the exception of a very user-friendly menu to create a wide variety of layouts for ticket printers. Besides the product name, three lines of 17 characters can be entered with your companies identity. Additionally, you can select the information to be printed on each line with a maximum of twelve lines.

The information printed can include time/date, sequence number, preset and batched quantity, product-name, total quantity, overrun value, alarm message, empty lines, CR/LF etc. All this information can be entered and selected through the 20-key keyboard of the batch controller. The printed information is in ASCII format accepted by almost any RS232 printer.

Note: further options are also available.

INPUT SIGNAL

P: PULSE, NAMUR

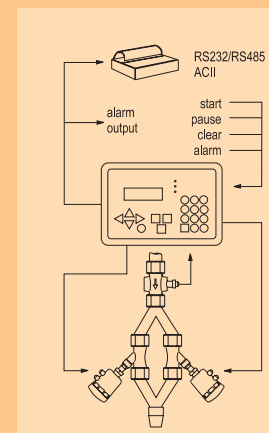
REMOTE INPUT

FOUR INPUTS: START, PAUZE, CLEAR, ALARM.

MONITORING / ALARM FUNCTIONS

NO FLOW, EXTERNAL ALARM, POWER-DOWN.

0313



BATCH-CONTROLLER WITH EXTENSIVE FUNCTIONALITY

Product features

- four or fourteen preset values
- monitoring functions for: flowrate, total quantity, number of batches, leakage, process-time, batch-size, power loss
- automatic restart function
- manual flush-control
- calibration procedure
- overrun correction
- two-stage control

Operator information

- preset value - can be entered
- selection of preset-values
- quantity batched and flowrate
- counter with alarm set-point
- totalizer with alarm set-point
- measuring units

Description

The 0320 is the most popular model in the 300-series range. It provides comprehensive features to perfectly control and monitor your batching process.

Four or fourteen different preset values can be entered. These are easily selected with the arrow shaped keys or via the external inputs by a switch or PLC.

The inputs allow you to control the unit remotely. In this way operator error is reduced to a minimum, even for less skilled operators.

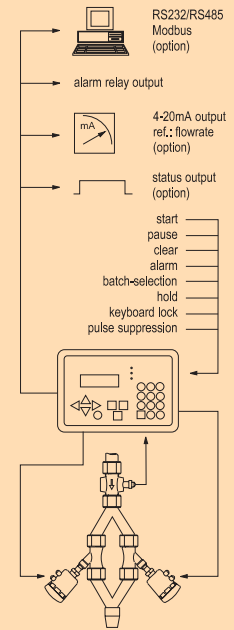
During batching, the preset value, batched quantity, flowrate and active batch number are displayed simultaneously. The active overrun correction will ensure an accurate result. One or two-stage valves can be controlled with low-flow start and stop options.

To flush your pipes, valves and flow sensor, manual control of the relays is available. With the repeat function, a new batch can be started automatically within 15 minutes after the last batch. The calibration procedure makes the process of re-calibrating the flowmeter very convenient.

All text and messages are clearly displayed in a choice of four languages.

Optionally available is: RS232/485 communication with Modbus protocol and 4-20mA in relation to the flowrate. Note: further options are also available.

0320



INPUT SIGNAL

P: PULSE, NAMUR

REMOTE INPUT

NINE INPUTS: START, PAUZE, CLEAR, ALARM, BATCH-SELECTION 1-4 (1-14), PULSE SUPPRESSION.

MONITORING / ALARM FUNCTIONS

FLOWRATE, BATCH QUANTITY, TOTAL QUANTITY, NUMBER OF BATCHES, OVERRUN, LEAKAGE, PROCESS TIME, EXTERNAL ALARM, POWER-DOWN.

DUAL BATCH-CONTROLLER

Product features

- two separate batch-controllers
- displays product names
- overrun correction
- flowrate monitoring
- power supply to the flowmeter

Operator information

- preset value - can be entered
- quantity batched
- remaining quantity and status
- product name and flowrate
- total - resetable
- batch counter - resetable
- measuring units

Description

The 0330 is a powerful batch-controller with a unique feature: it incorporates two separate batch-controllers in one unit. This means that you can batch 25ml and 30m³ at the same time or twenty times 5 gallons and 2000 kg once! The batches can be started up at any time as well as changing the preset values.

For each product, separate values are entered to monitor the allowed batch sizes and flowrate.

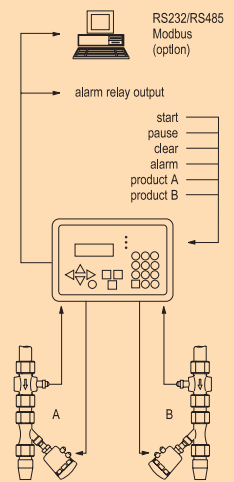
The overrun correction is logged and executed for each product individually.

For clear identification, alphanumeric product names of up to 17 characters can be entered.

During the batch, the product-name, preset value, batched quantity, flowrate, remaining quantity and status are displayed. The status screen will indicate if a batch is ready, running or in an alarm situation. The fail-safe alarm relay will be switched off in case of an alarm.

Note: further options are also available which include: RS232/485 Modbus communication.

0330



INPUT SIGNAL FOR FLOWMETERS

P: PULSE, NAMUR

REMOTE INPUT

PER PRODUCT: START, CLEAR, ALARM.

MONITORING / ALARM FUNCTIONS

MIN./MAX. FLOWRATE AND BATCH QUANTITY. EXTERNAL ALARM, POWER-DOWN.

Function overview

	0130	0230	0131	0231	0133	0233	0235	0302	0303	0310	0313	0320	0330
Flowmeter inputs													
P: coil, npn / pnp pulse, Namur	•	•	•	•	•	•	•	••	••	••	••	••	••
A: (0)4-20mA input	•	•	•	•	•	•							
U: (0)2-10V DC input	•	•	•	•	•	•							
Analog output 4-20mA													
proportional to flowrate			•	•			•					◇	
isolated output			◇	•			•					◇	
Relay outputs													
total number of relays / transistors	2	4	2	4	2	4	4	3	3	3	3	3	3
transistor 50V DC - 300mA	•		•		•								
electro-mechanical 240V AC - 1A	◇	•	◇	•	◇	•	•	•	•	•	•	•	•
solid-state relays 48V DC - 1A								◇	◇	◇	◇	◇	◇
Power supply													
battery powered	•		•		•								
8-28V AC/DC or output loop-powered	•		•		•								
input loop-powered	◇	◇	◇	◇	◇	◇							
12-28V AC/DC + sensor supply	◇	•	◇	•	◇	•	•	◇	◇	◇	◇	◇	◇
115V AC + sensor supply	◇	•	◇	•	◇	•	•	◇	◇	◇	◇	◇	◇
230V AC + sensor supply	◇	•	◇	•	◇	•	•	•	•	•	•	•	•
Key functions													
multiple batch sizes pre-programmable								•	•			•	
overrun correction	•	•	•	•			•	•	•	•	•	•	•
process logging: batched quantity	•	•	•	•	•	•	•	•	•	•	•	•	•
process logging: number of batches								•	•	•	•	•	•
flowrate indication			•	•	•	•	•			•	•	•	•
product names								•	•		•		•
two-stage control	•	•	•	•			•	•		•	•	•	
high speed controller								•	•				
pulse output proportional to total	•	•	•	•	•	•	•						
minimum / maximum batch size monitoring	•	•	•	•	•	•	•	•	•			•	•
maximum total quantity / number of batches												•	
leakage monitoring / alarm												•	
flowrate monitoring							•					•	
maximum batch time monitor								•	•			•	
external alarm input										•	•	•	•
auto-restart function												•	
linearisation							•						
alarm output, fail-safe / power failure		•		•		•	•			•	•	•	•
status output								•	•			◇	
printer driver											•		
volume / mass flow calculation							•						
password protected	•	•	•	•	•	•	•	•	•	•	•	•	•
Intrinsically safe	◇	◇	◇	◇	◇	◇							
explosion proof	◇	◇	◇	◇	◇	◇	◇	◇	◇	◇	◇	◇	◇

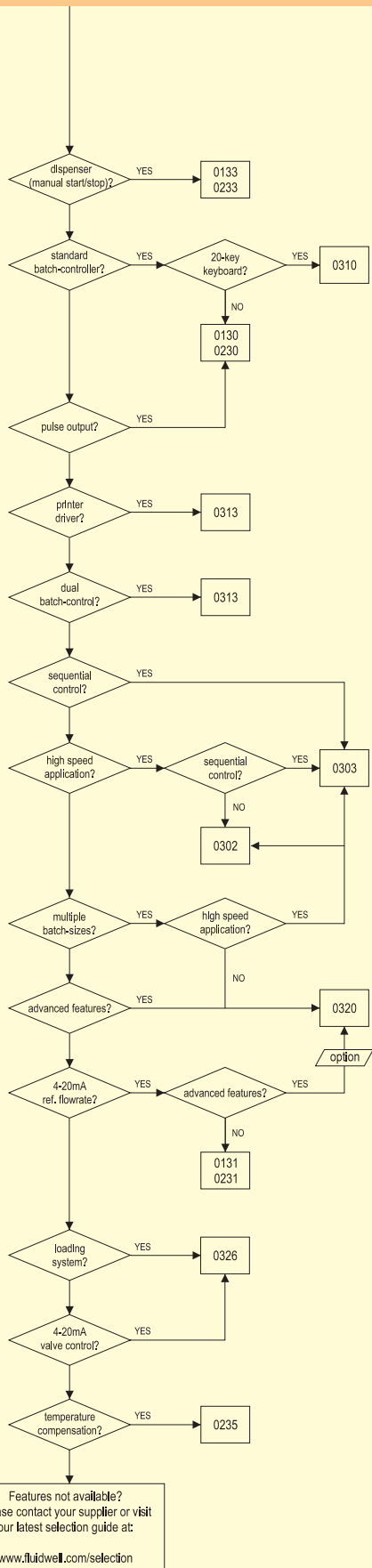
• = standard ◇ = option •• = pulse or Namur.

Note: further options are available. Specifications are subject to change without notice.

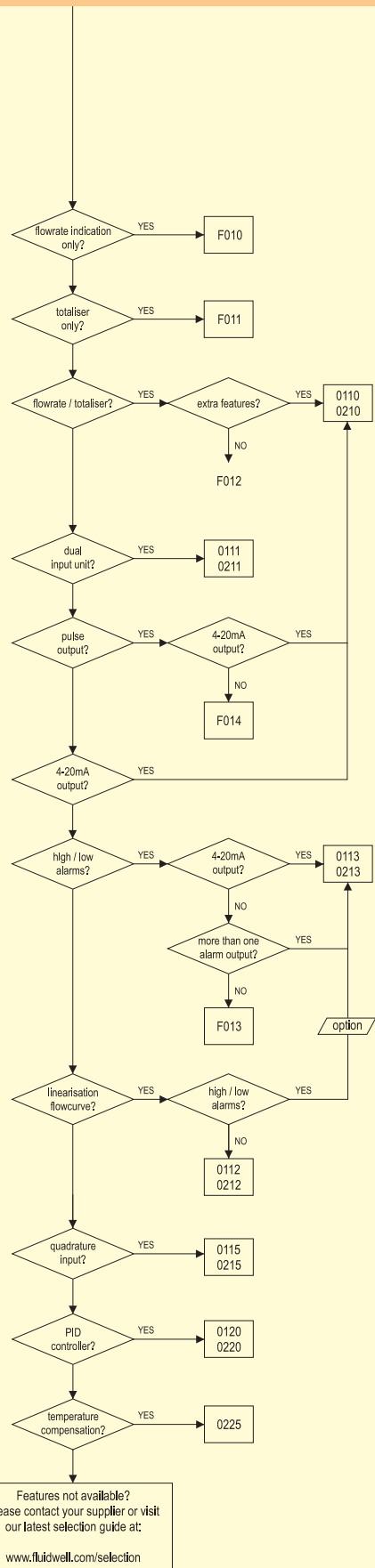
Detailed product-line and ordering information is given at the front of this Product Selection Guide.

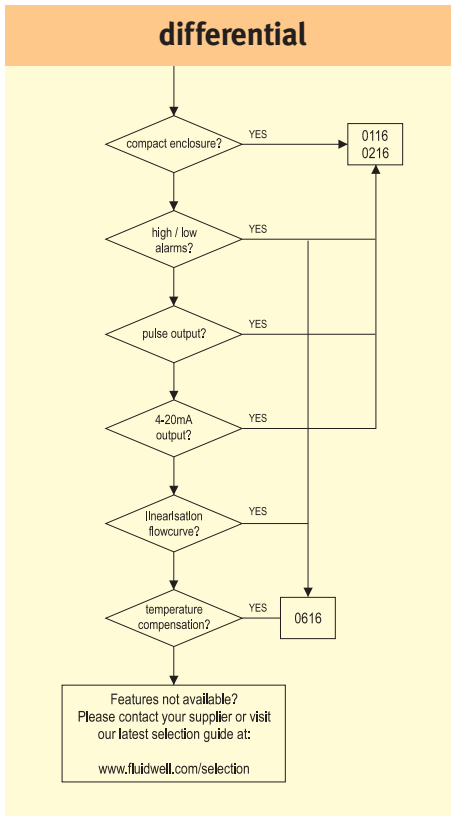
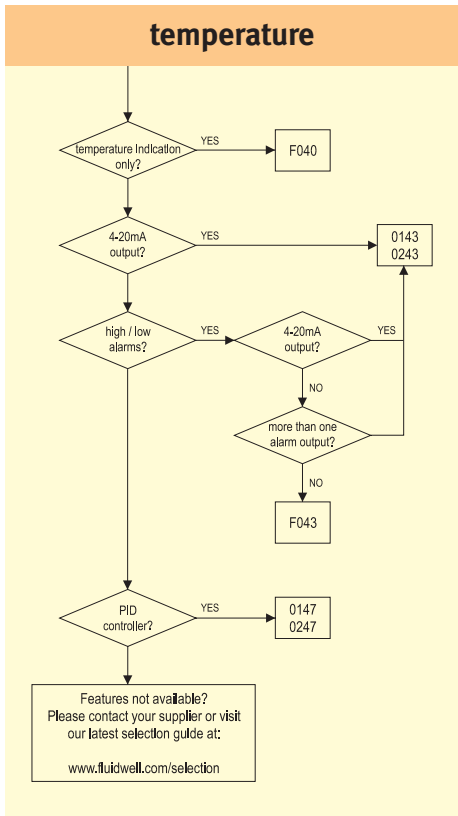
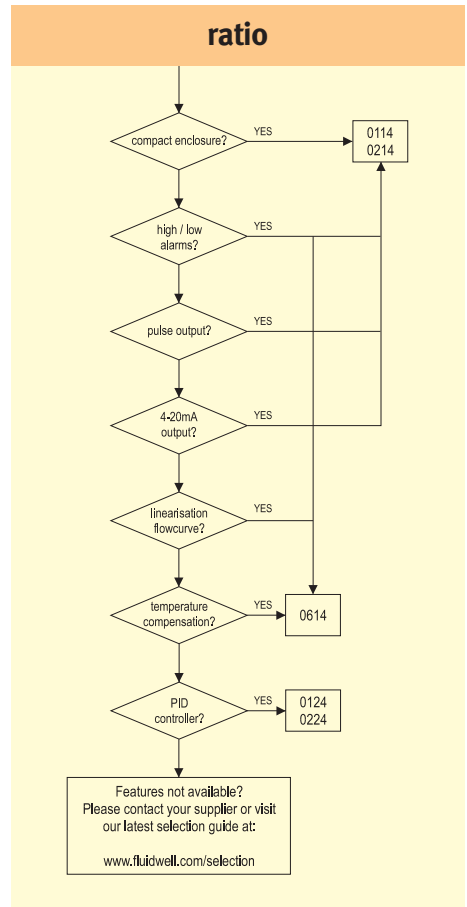
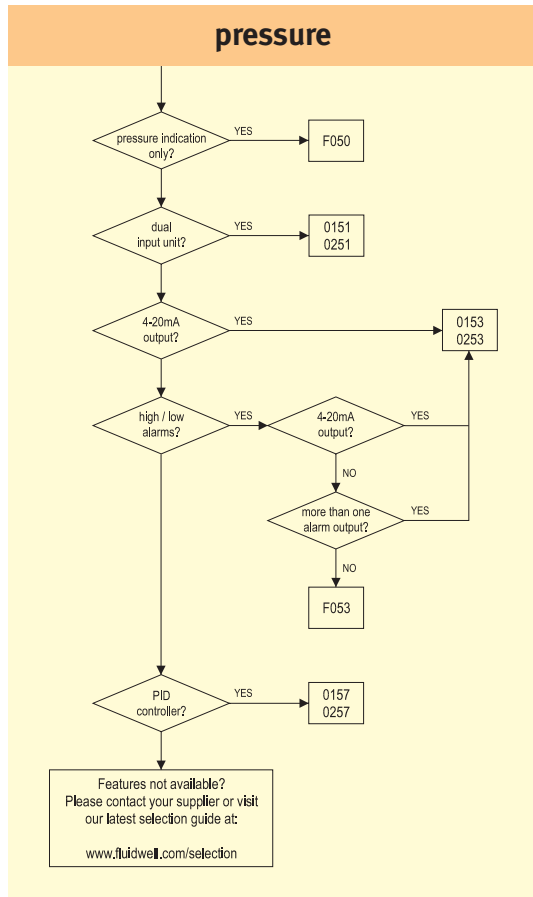
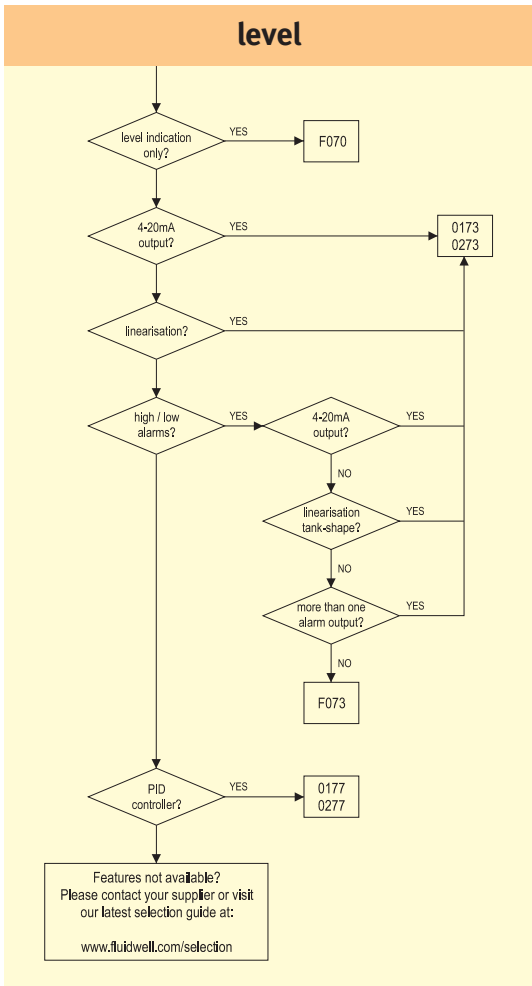
model	description	page
F010	basic flowrate indicator	27
F011	basic totalizer	28
F012	basic flowrate indicator / totalizer	28
F013	basic flowrate indicator / totalizer with high / low monitoring - one alarm output	28
F014	basic flowrate indicator / totalizer - pulse output	28
F040	basic temperature indicator	55
F043	basic temperature indicator with high / low monitoring - one alarm output	56
F050	basic pressure indicator	59
F053	basic pressure indicator with high / low monitoring - one alarm output	60
F070	basic level indicator	51
F073	basic level indicator with high / low monitoring - one alarm output	52
0110	standard flowrate indicator / totalizer - 4-20mA and pulse outputs	29
0111	dual flowrate indicator / totalizer	29
0112	flowrate indicator / totalizer with linearisation - 4-20mA and pulse outputs	29
0113	flowrate indicator / totalizer with high / low monitoring - 4-20mA and two alarm / pulse outputs	30
0114	ratio indicator / monitoring and flowrate indicator / totalizer - 4-20mA and high / low alarm outputs	36
0115	flowrate indicator / totalizer with quadrature input - 4-20mA, pulse and flow direction outputs	30
0116	differential / sum calculator / totalizer / flowrate indicator - 4-20mA and pulse outputs	40
0120	PID flowrate controller / monitoring - 4-20mA and high / low alarm outputs	31
0124	PID ratio controller / monitoring - 4-20mA and high / low alarm outputs	36
0130	standard batch-controller - two-stage control, pulse outputs	44
0131	batch-controller with flowrate calculation - two-stage control, 4-20mA and pulse outputs	44
0133	dispenser - control relay and pulse outputs	45
0143	temperature indicator with high / low monitoring - 4-20mA and two alarm / pulse outputs	56
0147	PID temperature controller / monitoring - 4-20mA and high / low alarm outputs	57
0151	dual pressure indicator	60
0153	pressure indicator with high / low monitoring - 4-20mA and two alarm / pulse outputs	60
0157	PID pressure controller / monitoring - 4-20mA and high / low alarm outputs	61
0173	level indicator with linearisation and high / low monitoring - 4-20mA and two alarm / pulse outputs	52
0177	PID level controller / monitoring with linearisation - 4-20mA and high / low alarm outputs	53
0210	standard flowrate indicator / totalizer - 4-20mA and pulse outputs	29
0211	dual flowrate indicator / totalizer	29
0212	flowrate indicator / totalizer with linearisation - 4-20mA and pulse outputs	29
0213	flowrate indicator / totalizer with high / low monitoring - 4-20mA and two alarm / pulse outputs	30
0214	ratio indicator / monitoring and flowrate indicator / totalizer - 4-20mA and high / low alarm outputs	36
0215	flowrate indicator / totalizer with quadrature input - 4-20mA, pulse and flow direction outputs	30
0216	differential / sum calculator / totalizer / flowrate indicator - 4-20mA and pulse outputs	40
0220	PID flowrate controller / monitoring - 4-20mA and high / low alarm outputs	31
0224	PID ratio controller / monitoring - 4-20mA and high / low alarm outputs	36
0225	flow computer / totalizer with temperature compensation - 4-20mA, pulse and high / low alarm outputs	31
0230	standard batch-controller - two-stage control, pulse outputs	44
0231	batch-controller with flowrate calculation - two-stage control, 4-20mA and pulse outputs	44
0233	dispenser - control relay and pulse outputs	45
0235	batch controller with temperature compensation - 4-20mA and high / low alarm outputs	45
0243	temperature indicator with high / low monitoring - 4-20mA and two alarm / pulse outputs	56
0247	PID temperature controller / monitoring - 4-20mA and high / low alarm outputs	57
0251	dual pressure indicator	60
0253	pressure indicator with high / low monitoring - 4-20mA and two alarm / pulse outputs	60
0257	PID pressure controller / monitoring - 4-20mA and high / low alarm outputs	61
0273	level indicator with linearisation and high / low monitoring - 4-20mA and two alarm / pulse outputs	52
0277	PID level controller / monitoring with linearisation - 4-20mA and high / low alarm outputs	53
0302	high-speed batch-controller for applications in packaging industry - two-stage control	46
0303	sequential high-speed batch-controller for applications in packaging industry	46
0310	standard batch-controller - two-stage control	47
0313	standard batch-controller with printer driver - two-stage control	47
0320	batch-controller with extensive functionality, multiple presets, monitoring and two-stage control	63
0326	loading system / preset, 4-20mA valve control or two-stage control	48
0330	dual batch-controller	48
0614	ratio indicator with temperature compensation - 4-20mA, high / low alarms and pulse outputs	37
0616	differential / sum calculator with temperature compensation - 4-20mA, high / low alarms and pulse outputs	40

batch controllers



flowrate / totalisers





Fluidwell online: <http://www.fluidwell.com>

Distributor:

Fluidwell bv
P.O. Box 6
5460 AA Veghel
The Netherlands
Telephone +31 (0)413 343786
Telefax +31 (0)413 363443
sales@fluidwell.com

Fluidwell Inc.
303 East Wacker drive
Suite 412
Chicago, IL 60601
Telephone 312 938-9100
Telefax 312 938-8949
sales@fluidwell.com

Fluidwell UK Ltd.
1a Warren House
Gatehouse Way
Aylesbury, HP19 3DB
United-Kingdom
Telephone 01296-427997
Telefax 01296-427949
sales.uk@fluidwell.com