

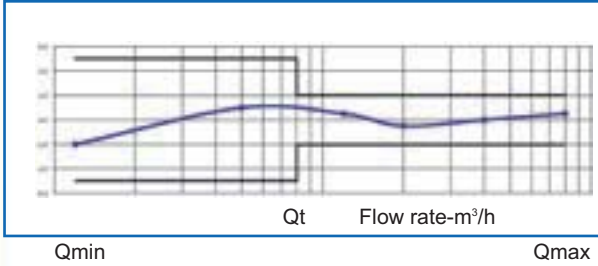


Omega-We-Sdc

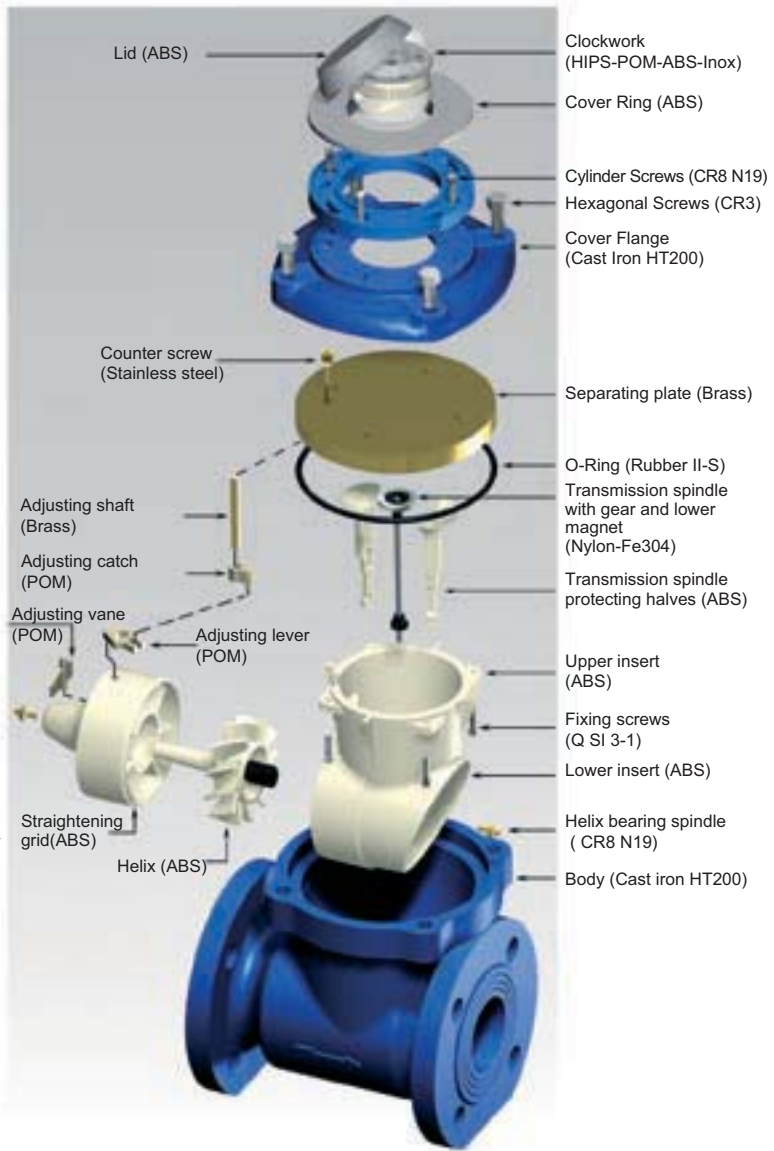
Helix Woltmann type water meter
interchangeable mechanism-dry dial

Helix Woltmann type bulk water meter interchangeable mechanism - dry dial

Full bore, helix Woltmann type meter suitable for cold water. It's impellar rotates on a stainless steel spindle mounted in the measuring chamber. The impeller is made of self-cleaning synthetic resin which like the rest of the meter is BS 6920 tested. The complete metering insert is easily removed from the meter body if damaged in service. The meter is of modern design and ensures high flow rates with minimum head loss. The Omega-We-Sdc is a "super-dry" dial type meter with a 360° rotating display. The gears and the totalizer operate in a dry Copper-Can* compartment, only the helix is submerged in water. Transmission is achieved through a corrosion-proof permanent magnetic drive which is protected by the cast iron meter body from external magnetic fields. A version for warm water upto 90° C is available. The water meter OMEGA WE SDC in pre-equipped for the connection of pulse emitter (reed switch type or opto design for higher frequencies on request . Approved to EEC 75/33 Class B.



* Copper-Can. The mechanical display is securely housed in an enclosed copper chamber with a sealed mineral glass screen IP68 protection and a perfectly clear display are thus guaranteed.



TECHNICAL DATA AND DIMENSIONS (Class B)

GAUGE	mm	50	65	80	100	125	150	200	250	300	400	500
	inches	2"	2.1/2"	3"	4"	5"	6"	8"	10"	12"	16"	20"
Qmax	m³/h	30	50	80	120	120	300	500	800	1200	2000	3000
Qn	m³/h	15	25	40	60	60	150	250	400	600	1000	1500
Qt	m³/h	3	5	8	12	12	30	50	80	120	200	300
Qmin	m³/h	0,45	0,75	1,2	1,8	1,8	4,5	7,5	12	18	30	45
PN*	bar	16	16	16	16	16	16	16	16	16	16	16
Pressure loss (at Qmax)	bar	<0,2	<0,2	<0,2	<0,2	<0,2	<0,2	<0,2	<0,2	<0,2	<0,2	<0,2
Minimum reading	lt	1	1	1	1	1	10	10	10	10	10	10
Maximum reading	m³	10 ⁶	10 ⁶	10 ⁶	10 ⁶	10 ⁶	10 ⁷	10 ⁷	10 ⁸	10 ⁸	10 ⁸	10 ⁸
Weight	Kg	11,00	13,00	14,50	17,50	22,00	44,00	53,00	105,00	115,00	190,00	280,00
Length (L)	mm	200	200	225	250	250	300	350	450	500	600	800
Height (H)	mm	235	235	255	265	265	325	352	470	495	640	750
Opening flow	m³/h	0,2	0,3	0,3	0,4	0,4	1,4	1,6	3	9	16	20

* On request PN10-PN25

