

SUPPLIERS OF:

Entel

tait
communications

ICOM

MOBILE
TORNADO

simoco
connections that count

Hytera

FYLDE MICRO

KENWOOD

PELTOR

Vertex Standard

MOTOTRBO
The Future of Two-Way Radio

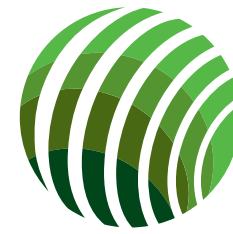


MOTOROLA

Ecommerce

www.digital2wayradios.co.uk

 **digital2wayradios**



radiocomms

WWW.RADIOCOMMS.CO.UK

The UK's leading
independent two-way
radio provider

Contact Us:

*London Head Office
Unit 3, The Chase Centre
8 Chase Road
Park Royal
London
NW10 6QD
Tel: 020 8951 9820*

*Heathrow Office
208 Epsom Square
London Heathrow Airport
Hounslow
TW6 2BG
Tel: 020 8951 9820*

*Warrington Office
Warrington Business Centre
Gilbert Wakefield House
Warrington
WA2 7JQ
Tel: 01925 424 700*

TEL: 0870 460 4600

EMAIL: SALES@RADIOCOMMS.CO.UK

Installations

Radiocom's has one of the largest dedicated radio engineering teams in the two-way radio communications industry and is able to offer the highest levels of service to its customers for installation projects anywhere in the UK.

Radiocom's is a Safe Contractor member and all on-site engineers hold a valid CSCS card. In addition all Radiocom's engineers participate in an extensive and continuous training programme whereby selected engineers are certified to Work at Height, hold Access Platform Operators licences, obtain Off-Shore Survival and First Aid training, and have Security Clearance for government contracts including the MOD, airside security clearance for airports, and CRB checks.

All on site and vehicle installations are completed in accordance with FCS1331 and FCS1362 respectively.

Support & Maintenance

With its 'Platinum Service', Radiocom's Field Service personnel provide a 24 hours a day, 365 days a year maintenance service for its customers with an engineer guaranteed to be on site within 4 hours of fault report anywhere in the UK.

All engineers receive full manufacturer technical training and are regularly assessed to ensure that standards of service meet Radiocom's strict ISO9001:2008 quality and FCS1362/1331 installation standards.

All Radiocom's maintenance packages provide a loan unit replacement for faulty units being repaired, should a unit be incapable of a timely repair on site.

Two Way Radio Hire

Radiocom's hire department has seen significant growth over the past five years and now has over 12,000 hand portables in addition to vehicle mobile radios, desk top base stations, repeaters and accessories in its fleet.

Radiocom's provides hire equipment across all industry sectors including events, security, construction and retail and in 2012 was awarded a prestigious contract to provide over 4,500 analogue radios to LOCOG for the Olympic and Paralympic Games, its biggest single short term hire to date.

Radiocom's hire fleet consists predominantly of Motorola equipment. Over the past six years Radiocom's has invested over £2 million to ensure its fleet stays technically up to date and meets customers' demands.

Systems & Solutions

Radiocom's sales staff and project engineers have extensive experience in all aspects of radio system design and are able to deliver a complete solution from design concept to site acceptance and on-going maintenance.

Radiocom's sales and project team can provide a number of alternative solutions that integrate and complement the latest digital radio products. These products provide improved system performance, site-wide efficiencies and systems integration with, for example, fire and security alarms, indoor and outdoor location systems and pager systems.

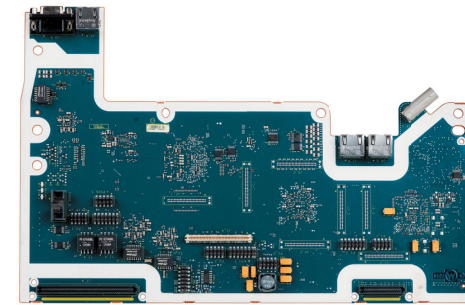
Today's radio systems also allow easy expansion through IP Site Connect to link radio users anywhere in the world. This, together with the latest range of applications including voice recording and lone worker units, enhances Health & Safety provisioning in a comprehensive radio solution package for businesses in all industry sectors.



Equipment Repairs

Radiocom's bench engineers have over 150 years combined experience on the repair and testing of hand portable radio equipment and are manufacturer approved to repair most makes and models of hand portable equipment down to component level. Each bench engineer is provided with the latest test equipment, Radiocom's being one of the few companies in the UK to invest in DMR and Tetra test sets.

Radiocom's Complete Care Scheme is designed to provide its customers with a complete choice of cover from simple extended warranty to a fully managed service to include wear and tear, physical damage and water damage to equipment. The scheme provides for equipment to be serviced as many times as required for a fixed annual price.



Sales

As the UK's largest independent radio communications provider, Radiocom's sales team is able to select from its approved distributors the products and solutions best suited to its customers' businesses.

Radiocom's sales experience covers virtually all industry sectors; systems sales for military contracts to provide wide regional coverage; the latest Atex digital product portfolio for petro-chemical, off-shore and fire service sectors; mission critical airport radio and system sales; digital radio solutions with job ticketing, alarm handling and GPS for the retail and leisure sector; and same-day delivery of hand portables and accessories through its e-commerce site.

