

Specification Advice

For laying
SureSet flexible resin bound aggregate surfacing



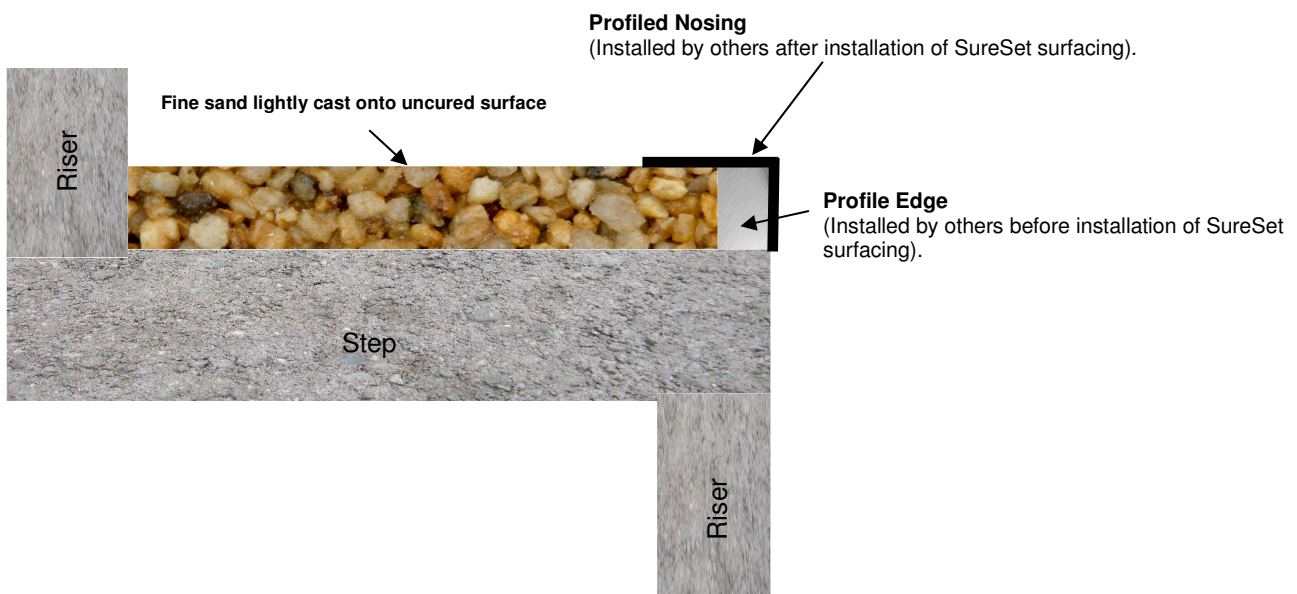
Step Treads

The typical depth of SureSet Permeable Paving surface:

A SureSet aggregate size of 3mm requires a 12mm depth layer of SureSet

A SureSet aggregate size of 6mm requires a 16mm depth layer of SureSet

A SureSet aggregate size of 10mm requires a 22mm depth layer of SureSet



Purpose

An attractive, practical durable surface.

Advantages

Permeable, seamless, easy to maintain and quick drying.

Notes

Freshly laid concrete should be allowed to cure for 7 days before installing SureSet unless a non-permeable membrane is applied to the surface of the concrete.

Concrete surfaces should sound, clean, dry, dust free and be primed with a SureSet advised primer before SureSet is installed.

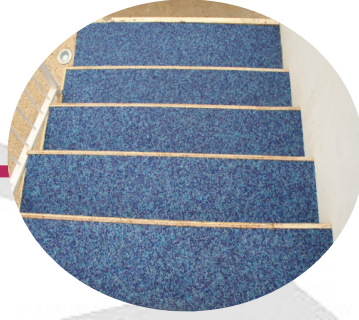
Aged concrete should be sound and any cracks attended to before installation.

SureSet is a permeable material so specifiers should satisfy themselves that adequate drainage provision has been made for surface water.

Consideration should be given to individual aggregate size and shape to ensure good grip characteristics even when wet.

This specification is based on normal good practice for flexible surfacing and does not absolve the specifier from designing a construction suitable for the expected tree requirements, traffic and ground conditions pertaining on a given site.

Step Treads



If you have any enquiries call our technical sales team on: +44 (0)1985 841180

The details in this specification are intended only as a guide in specifying SureSet products, actual designs should be developed by the project designers taking into account the specific circumstances of the intended application. SureSet assumes no responsibility for improper reliance upon or misuse of the data herein. Product design and specification are subject to change without further notice.