



ADVANCED PROPHY AND CAVITY
PREPARATION WITHOUT ROTATION

WHAT CAN THIS MACHINE DO FOR YOU?

Velopex International's Aquacut Quattro is an ideal tool for **minimally invasive** and cosmetic dentistry. With **no direct contact** with the tooth structure, Aquacut Quattro produces no vibration, turbine noise, heat generation, or smell, and it greatly reduces the need for local anaesthesia.

In **cleaning mode**, the Aquacut Quattro is a valuable tool for the **hygienist**, delivering highly efficient stain removal and cleaning. It also increases the effectiveness of tooth whitening procedures.

The Aquacut Quattro's patented handpiece delivers a **high-speed fluid stream**, fed from a self-contained reservoir, to create a liquid curtain around the abrasive medium. This provides comfortable and efficient cavity preparation. The triple-action foot control enables **cut, clean/wash, and dry** operations to be carried out through the same handpiece, allowing continuous operation without interruption. The twin powder chambers permit **cutting and prophy/stain removal** at the twist of a switch. For example, suspicions concerning an area of possible decay can be confirmed with the Aquacut Quattro in cleaning mode, and then treated by switching back to cutting mode.

Aquacut Quattro is a fraction of the cost of a hard-tissue laser, while providing fast, efficient cutting and cleaning with very high levels of patient acceptability. The Aquacut Quattro cuts quickly but very conservatively, minimising the removal of sound tooth material and eliminating the risk of chipping or stress fracturing.

AQUACUT



3-in-1 HANDPIECE



The autoclavable handpiece comes in colour-coded nozzle sizes. The long-life tungsten carbide nozzles are easily changed to suit the treatment.

An entire procedure can be performed without removing the tip from the oral cavity. One handpiece supplies air, water and/or treating medium.



HYDRO PARTICLE TECHNOLOGY



The Aquacut's high-speed fluid stream, fed from a small reservoir, provides a continuous cavity wash during cutting and virtually eliminates airborne powder and tooth debris. This unique technology gives outstanding cutting efficiency and minimal patient discomfort.

FOOT CONTROL

The unique 3-way foot control enables cut, clean/wash and dry operations to be carried out through the same handpiece without withdrawing from the mouth - a great time saver.



VERSATILE & CONVENIENT CARTRIDGE SYSTEM FOR AN EVER INCREASING RANGE OF PROCEDURES



Simple, efficient and clean insertion of the compact cartridges – replacement in seconds.

- ProClean for Prophylaxis, Cleaning and Polishing.
- Sylc BioGlass Desensitising and Remineralising Prophy Powder.
- ProCut & ProCut+ for Cutting, Caries Removal and Cavity Preparation.

CAVITY PREPARATION AND PROPHYLAXIS



Before



After



Before



After

**Procedural images courtesy of Bhupinder-Dawett*

The AQUACUT QUATTRO is ideal for use in conjunction with modern dental adhesives and filling materials. It rapidly and efficiently removes composites or hard tooth tissue, leaving cavity surfaces ready to receive the latest resins.

It is an exceptional tool for the repair of composites and enables fast repair of existing fillings that have begun to fail.

The design of the AQUACUT QUATTRO allows you to change instantly from cutting mode to stain removal - without changing the handpiece.

This facility makes the AQUACUT QUATTRO equally useful to dentists and hygienists.

SUPPLIED COMPLETE AND READY TO USE

The AQUACUT QUATTRO system is supplied with handpiece, foot control pedal and two grades of cutting media, stain removal powder plus Sylc powered by NovaMin.

All that is required is compressed air (clean, dry and up to 7 bar in pressure). A suitable air compressor can be purchased as an optional extra.

SAFE FOR TEETH

The AQUACUT QUATTRO cuts very conservatively, minimising the removal of sound tooth material. There is no direct contact with the tooth - the risk of chipping or stress fracturing is eliminated.



Pre-Op



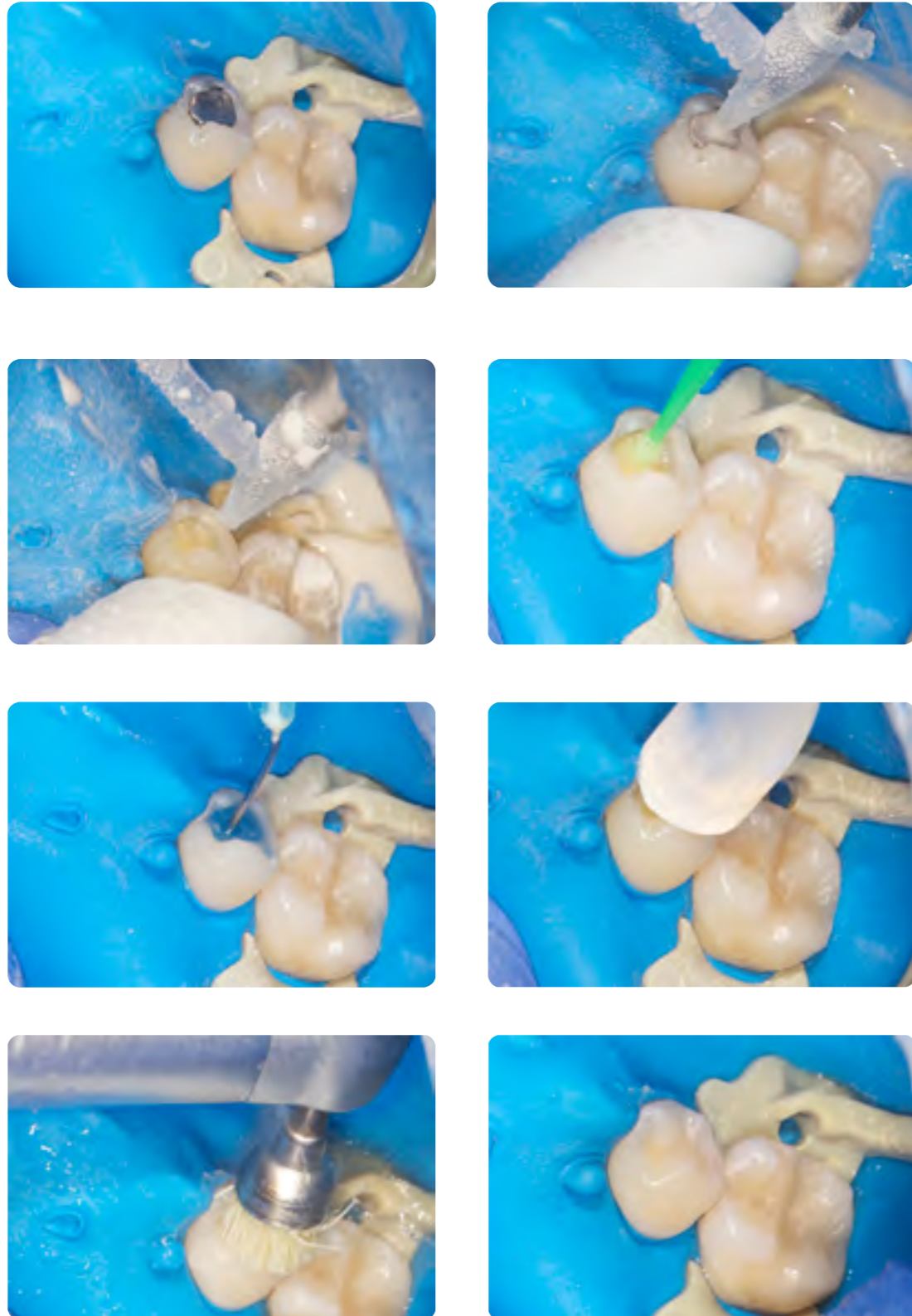
Prepared



Finished Restoration

**Procedural images courtesy of Jason Smithson, member of the Bio-Emulation Group*

AIR ABRASION COMPOSITE RESTORATION PROCESS



**Procedural images courtesy of
Grzegorz Witkowski*

ADVANTAGES OF THE AQUACUT

- 1 No chipping or stress fractures, plus minimal removal of sound tooth material
- 2 Quick and efficient - reduced treatment times
- 3 Versatile - able to clean, treat, wash and dry
- 4 Patient friendly - no heat, noise, vibration or smell
- 5 Reduces the need for local anaesthesia
- 6 More conservative than a hard tissue laser and at a fraction of the cost
- 7 Fully portable and easy to operate - requires only an air supply
- 8 A unique product, using advanced patented technology

SPECIFICATIONS

External Supplies

Clean, dry, compressed air, 6 bar (90psi) minimum, 7.5 bar (110psi) maximum. Inlet air supply connection Ø 4mm push-in fitting.



Foot Control

Three-way multi-functional foot valve for cut, wash and dry control. 2m (6ft), three-core pneumatic supply tube.

Media

Cutting Media

53 and 29 micron Aluminium Oxide.

Polishing Media

Sodium Bicarbonate, Syc For Aquacut.

All powder rate infinitely variable between 0 and 6g / min (0.2oz) via rotating switch and pressure gauge.

Output Pressure

Infinitely variable cutting/polishing air pressure between 0 - 7 bar (100psi), controllable via rotating switch and pressure gauge.

Handpiece

Anodised Aluminium with separate integral powder and fluid channels (both operated by foot control). Nozzles made from stainless steel tube with Tungsten Carbide tip. Handpieces incorporate quick release system for convenient changeover of cutting sizes.

Handpiece

CLASS IIA	HOMOLOGATION	CE0120
CLASS IIA	UNITED STATES	FDA
CLASS II	CANADA	TPD
CLASS II	AUSTRALIA	TGA

US PATENT NO.6676409
Parallel Patents Pending

DIMENSIONS

Depth	240mm / 9.4"
Height	240mm / 9.4"
Width	300mm / 11.8"
Weight	4.1kg / 9.0lb

AQUACUT QUATTRO DOUBLE-CHAMBER



AQUACUT JUNIOR SINGLE-CHAMBER



AQUACUT
BOOK A **PATIENT TRIAL**
LUNCH & LEARN TRAINING
SESSION FOLLOWED BY THE
OPPORTUNITY TO TREAT A PATIENT

CALL 020 8965 2913
EMAIL sales@velopex.com
OR BOOK ONLINE
www.velopex.com/demo

Follow, Like and Share!
Join the conversation online



www.velopex.com
[@Velopex](https://www.facebook.com/Velopex) [fb.com/Velopex](https://www.facebook.com/Velopex)



Medivance Instruments Ltd., Barretts Green Road,
Harlesden, London NW10 7AP United Kingdom
T +44 (0)20 8965 2913 F +44 (0)20 8963 1270 E enquiries@velopex.com