



DÜRR X-RAY FILM PROCESSING

The development goes on and on

DÜRR XR 24 PRO

Programm wechseln:

<EXTRA> 4:00
MASCHINE FREI

Neu: Professionelle
Menue-Fuehrung

PROCESS 4:00
(ENTER): ENDE

BAD-TEMP 28.0°C
(ENTER): ENDE

TROCKNER 20%
(ENTER): ENDE

REG. ZEIT 30 SEC
(ENTER): ENDE

From a professional picture to an exact diagnosis

DÜRR X-RAY FILM PROCESSING

Facts in black and white

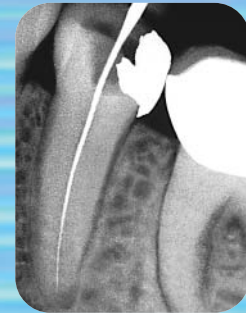
Causal dental medicine presupposes an exact diagnosis – on the basis of X-ray pictures. Whether intra oral or panoramic, dental practices rely on taking perfect pictures and this normally requires a high level of training for all involved. Automatic film processing development helps ease that demand on expertise.

Fully automatic wet developing from Dürr Dental has supplied results of unexcelled image quality for many generations of products. We continue this tradition in the high-tech age with the Dürr XR 24 Pro.

DÜRR XR 24 PRO

The name Dürr XR 24 Pro is a well-known brand name in dental practices. Precise developing quality for all dental film formats has lent this machine a well-deserved reputation for many generations of products. It achieves such results through its hi-tech design together with its convenient handling. Its economy of operation has also been optimised by the use of the new Dürr X-ray film chemicals.

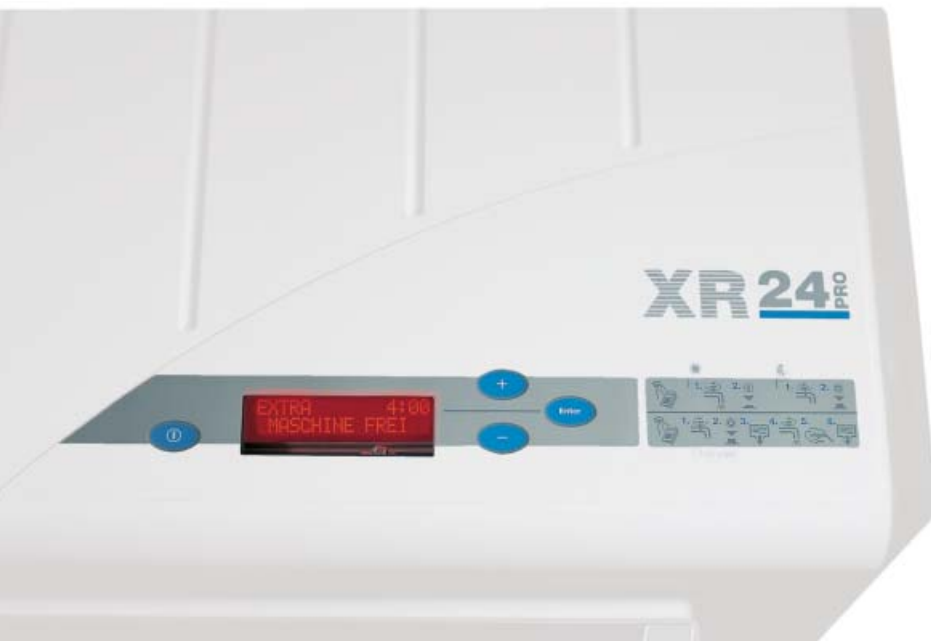
The new Dürr XR 24 Pro builds even further on this tried and tested technology with the use of its professional menu-driven operating electronics for use and service. The process controller makes operation even more convenient and reliable by using menu selection for intra oral, panoramic or endo films. The program allows you to query machine parameters and change processes. Service is greatly simplified, because the program reveals data such as length of operation and developing volume at the press of a button.



Endo measuring film, developed in a very short time.



Intra oral film using right-angle technique for precise data in the molar area



Functional, easy to read at a glance and attractive – the multifunctional display of the new XR 24 Pro.

Easy to read and derive
conclusive information from
a developed OPG X-ray film



X-ray film chemicals make the decisive difference

Perfection in image quality depends to no small extent of the composition of the chemical used. The Dürr XR film chemicals have always shone because they are perfectly matched to Dürr processors. Now, in parallel with the introduction of the new Dürr XR 24 Pro, there is a whole completely new range of XR film chemicals to partner it; first of all, they consist of single-component developer and fixer concentrates. The key new advantage to this is greatly simplified making-up of the chemicals: fill – dilute – done!

What is even more important is an improved and optimised system matching to suit all the main dental films on the market, and to give consistent developing results. The Dürr XR 24 film chemical can maintain these consistent developing results even after many films. Image quality is assured. And the economy of the X-ray film chemicals in the Dürr XR 24 Pro has been optimised as well.

List of recommended X-ray films for the Dürr XR 24 Pro

Intra oral

Bath temperature 28°C
Processing time 6 min
Dryer rating 20%

Agfa	Dentus M2 Comfort
Kodak	Insight Ultra Speed

Extra oral

Bath temperature 28°C
Film formats up to max. 24x30 cm

Agfa (6 min)	Dentus RP 6 Dentus Ortholux
Agfa/Sterling (6 min)	Cronex Dental Ultra-Vision™ (UV-G)
Kodak	X-OMAT K (6 min) T-MAT L (4 min) T-MAT G (4 min)

Other types of film must be tested for their process values and processing modified accordingly with regard to the "Dental Sensitivity Index" and "Dental Contrast Index".



The new Dürr XR film chemicals have single-component chemicals; black for the developer, red for the fixer.



Developing to professional standards

DÜRR XR 24 PRO

Professional film developing is a complex process that requires precise compliance to certain parameters; constant temperature, consistent concentrations of the chemicals and correct throughput speed. If only one of the parameters ceases to be constant, the result is shown at once in the image quality. Diagnosis with X-rays therefore requires comprehensive quality management the individual components of the machine. The fully automatic Dürr XR 24 Pro X-ray film

processor tackles this problem with the optimum solution. There are three predefined developing programs for the film types "Intra", "Extra" and "Endo" that regulate the bath temperature to 28 °C and guarantee a dryer capacity of 20%. The developing times are 6 minutes for "Intra", 4 minutes for "Extra" and 2 minutes 45 seconds for "Endo". The programs are selected by pressing a single button; development is started inserting by inserting one or more films.



The relevant program is shown clearly on the display. This makes errors the exception, and the practice saves time.

User-friendliness everyday

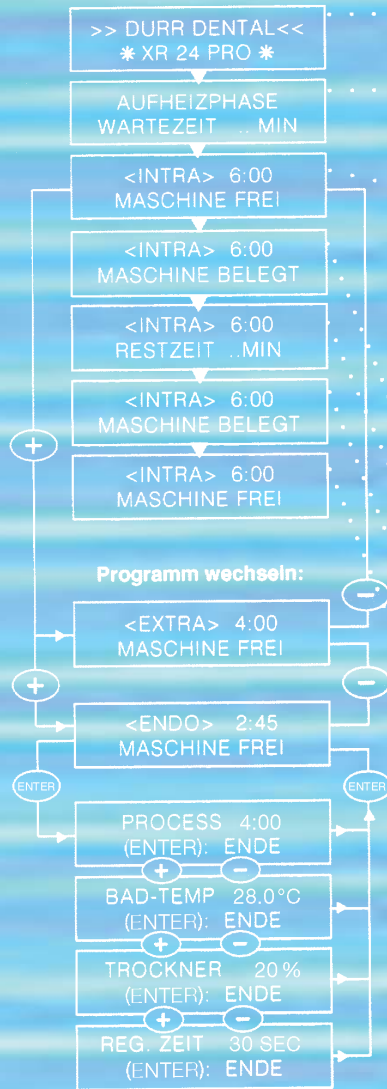
The Dürr XR 24 Pro is very user-friendly due to the new menu-driven electronic controller. Professional menu-driven selection makes the handling so very simple. Furthermore, the precise display of the time left saves the user from waiting in the darkroom. The developing process efficiently integrates itself into the treatment for both dentist and patient.



Program selection for the desired film formats is done by simply pressing a button.



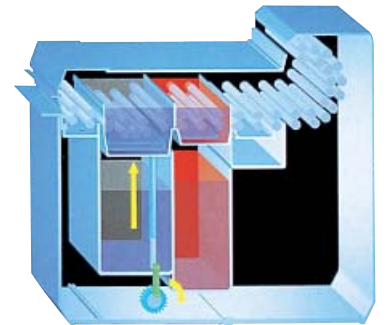
The selected program displays the developing time – all that has to be done now is to insert the film. The process starts automatically.



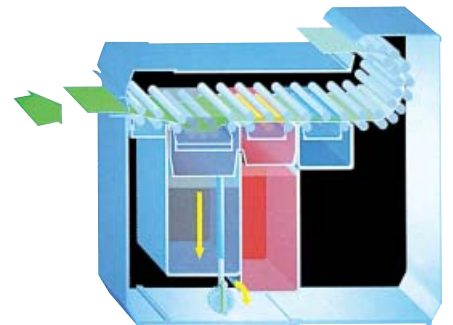
Further development for the dental practice

Improving what has already been well proven in actual practice, integrating new features. Thus the Dürr XR 24 Pro makes use of a refined dip-tank technique that has been completely modernised for the latest product generation. The transport rollers do not dry off in the long stand-by phases but are always submerged in liquid. Thus developer and fixer cannot crystallise on the rollers and damage the sensitive film material when the next one is developed.

Dip-tank technology



Thanks to its dip-tank technology, the roller system always remains under the level of the liquid in the stand-by phase.



During the development process the tank lift lowers automatically and opens up the path for the film to pass through.

Refined developing technology based on a system

DÜRR XR 24 PRO



DÜRR X-RAY FILM DEVELOPMENT

In the protection of the darkness

The Dürr XR 24 Pro can be used in any dental practice environment. It can be set to cope with any situation through a comprehensive range of accessories.

No space for a darkroom? No problem. Daylight loading attachments turn the XR 24 Pro into your own darkroom – without any loss of developing quality. All dental film formats can be accommodated in the built-in film holder.

More space for efficient working?
Let us assume that you have a darkroom but want to reduce the amount of time that you spend there; by using a daylight loading attachment you can leave the room immediately after inserting the film.

We would be glad to give advice as to which accessory would make your work even easier.



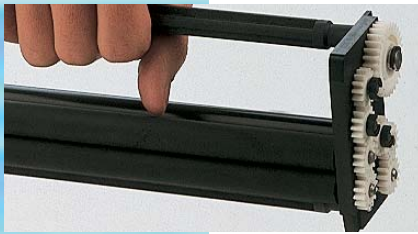
*The DL 24 and DL 26 daylight loading attachments turn any room into a darkroom.
The DL 26 daylight loading attachment gives more freedom of movement and is suitable for cassettes for the film sizes of up to 24 x 30 cm.*

Transport system



The transport system is made of individual roller sets which carefully moves the film from bath to bath. It can easily be removed from the machine when the chemicals are changed every month.

Cleaning and care



Regular cleaning of the roller set under the tap just takes a few moments. The package is easily removed, cleaned and replaced. Cleaning can also be done with Dürr WR 2000 spray cleaner.



Cleaning film



The Dürr XR 24 Pro works without any maintenance being needed. In isolated cases in areas with unsuitable water (very hard water), perfect image quality can easily be restored by running a cleaning film through the system.



XR cleaning set



A really thorough and intensive cleaning of the roller package is best done in the cleaning tank. The tank cleaner dissolves chemical residues and stubborn deposits.

RU replenisher



The chemicals should be automatically replenished with the RU 24 when developing volumes increase. The RU 24 pumps a precisely defined amount of developer and fixer liquid into the baths of the Dürr XR 24 Pro from the supply tanks.

Darkroom safelight



Our comprehensive range of useful accessories also includes this darkroom safelight.

Development in detail

DÜRR XR 24 PRO

Convincing advantages

Professional menu-driven operation at the press of a button.

Controlled developing time guarantees optimum image quality.

Simplified service calls by being able to display machine data at the press of a button.

Developing of all types and formats of dental film.

Simple and timesaving operation.

Floating cover lengthens the life of the chemicals.

Dip-tank technology helps maintain consistent image quality by preventing chemicals from crystallising.

Comprehensive range of accessories such as daylight and darkroom loading attachments, a regeneration unit and a collector tank as well X-ray chemical and cleaning sets.



Technical data

Voltage:	230 V
Frequency:	50-60 Hz
Power drawn:	4.0 A
Capacity:	950 W
Heating capacity:	
– Bath heating:	400 W
– Drying:	450 W
Warming-up time:	app. 20 min. (0,5°C/min.)
Film throughput time:	2:45 - 20:00 min
Water throughput:	2 l/min.
Water pressure	
– Minimum/maximum	2/6 bar
Tank volumes:	
– Developer/fixierer	each 5 l
Dimensions W x D x H:	42 x 51 x 44 cm
Weight:	25 kg
Approval mark:	
medicine product approval 93/42/EWG with CE	

Order numbers

X-ray film developer XR 24 PRO	1700-08
Daylight loading attachment DL 24 W x D x H (mm) 424 x 280 x 373	1700-910-00
Daylight loading attachment DL 26 W x D x H (mm) 424 x 424 x 373	1700-920-00
Darkroom loading attachment DA 24 W x D x H (mm) 424 x 280 x 373	1700-930-00
Regenerator unit Discuss recommended use with your Dürr Dental Dealer. W x D x H (mm) 360 x 320 x 370	1700-820-00