

**SOREDEX**

**DIGORA<sup>®</sup> PCT**



Fast. Easy. Versatile.  
Digital Imaging Plate system

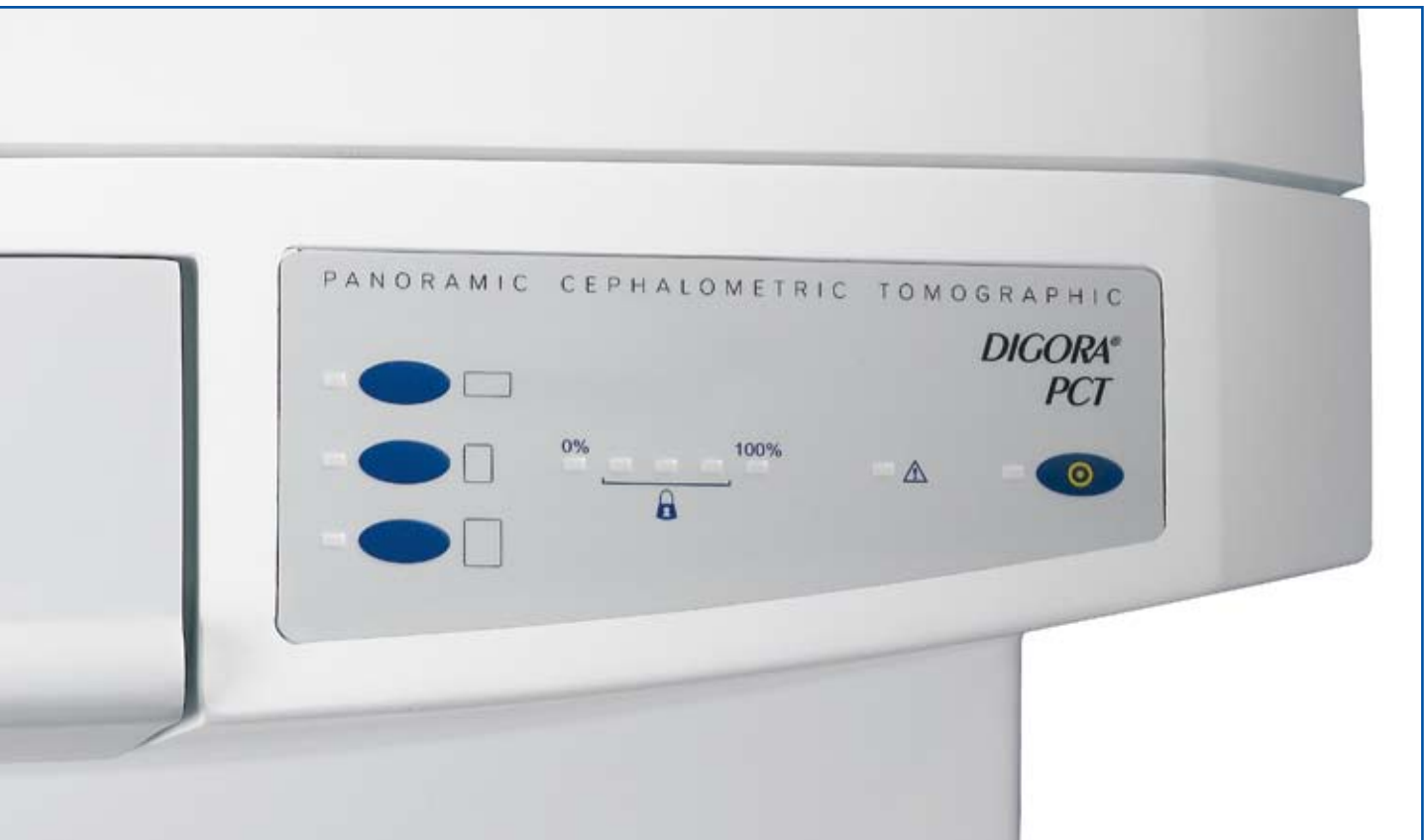
# Advanced digital imaging

SOREDEX digital technology is at the forefront in dental x-ray imaging. Digital imaging offers dentists convenience, economy and improved diagnostic opportunities. SOREDEX is at the forefront of the digital technology revolution and now offers a range digital x-ray systems for all your imaging requirements.



Taking x-ray images for diagnostic purposes is a vitally important task in all dental practices. However, because dental imaging is not always a daily routine it is essential that imaging systems and software must be easy and

convenient to use so that the dentist can get the images required as quickly as possible and then concentrate on what is really essential – *treating the patient.*



# Convenient use

## **Fast, easy and simple**

The use of the DIGORA® PCT system is extremely convenient. Open the door, insert the imaging plate and close the door – it's as easy as that. Plate feed, scanning and image acquisition are fully automatic and the imaging plate is ready to be used again right after the image appears on the computer screen.

The system on its stand is ergonomically designed so that it is at the correct height for easy operation.

## **AutoErase**

Unit automatically erases the imaging plate after the readout.



# New features



- **EDO (Exposure Distribution Optimiser)**  
*EDO increases dynamic range (wide latitude). EDO will practically eliminate under and over exposures. EDO enhances smaller contrast details and differences in dark and light areas of the image.*



- **Completely new and automated Image Plate Feeding System Centraliser**  
*The new construction ensures smoother and accurate imaging plate feeding process.*



- **Stand**  
*New stand is stable and easy to clean due to open design.*



*Optional intraoral imaging plate, size 2 (31 x 41 mm).*



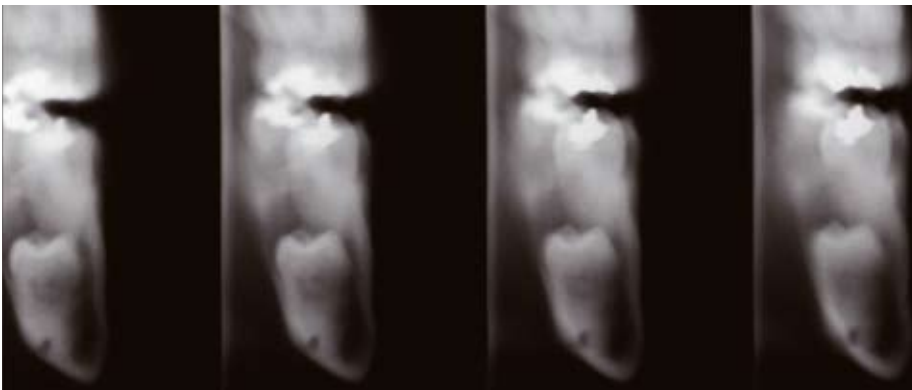
*Optional occlusal intraoral imaging plate, size 4 (57 x 76 mm).*



# Superb image quality



**Panoramic imaging**



**Tomographic imaging**

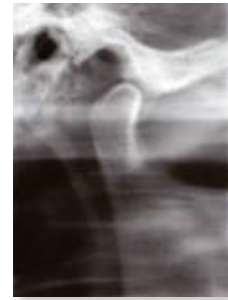
*Tomographic imaging techniques are particularly demanding. Digital units that make use of CCD sensors are not able to produce real digital tomographic images. With the DIGORA® PCT Imaging Plate system tomographic images are easy to produce as the system takes care of the technical parameters virtually automatically.*



**Cephalometric**



**Temporomandibular joint tomograms**



**Scanograms**

**Temporomandibular joint scanograms**



**Intraoral, size 2**



**Occlusal, size 4**

# Daylight system

DIGORA® PCT is a **daylight system** which can be used in the normal lightning conditions of any dental practise.

*Working with film, darkrooms and processing chemicals will soon be a thing of the past. The time spent in a darkroom, waiting for a film to be processed, can now be used more efficiently – looking after your patient.*



*A single DIGORA® PCT can be easily used by virtually as many panoramic and cephalometric x-ray units as desired. In addition, it can be located almost anywhere in your dental office. DIGORA® for Windows local area network software facilitates fast and effortless communication and image transmission between workstations.*

# DIGORA® Imaging Plates

All major extraoral imaging modalities  
+ occlusal size 4 and intraoral size 2

The DIGORA® PCT produces the high quality panoramic, cephalometric, tomographic, occlusal and intraoral size 2 images. The system handles the following image plate sizes:

#### EXTRAORAL

- 15 x 30 cm
- 18 x 24 cm
- 24 x 30 cm
- 8 x 10"
- 10 x 12"

#### INTRAORAL + OCCLUSAL

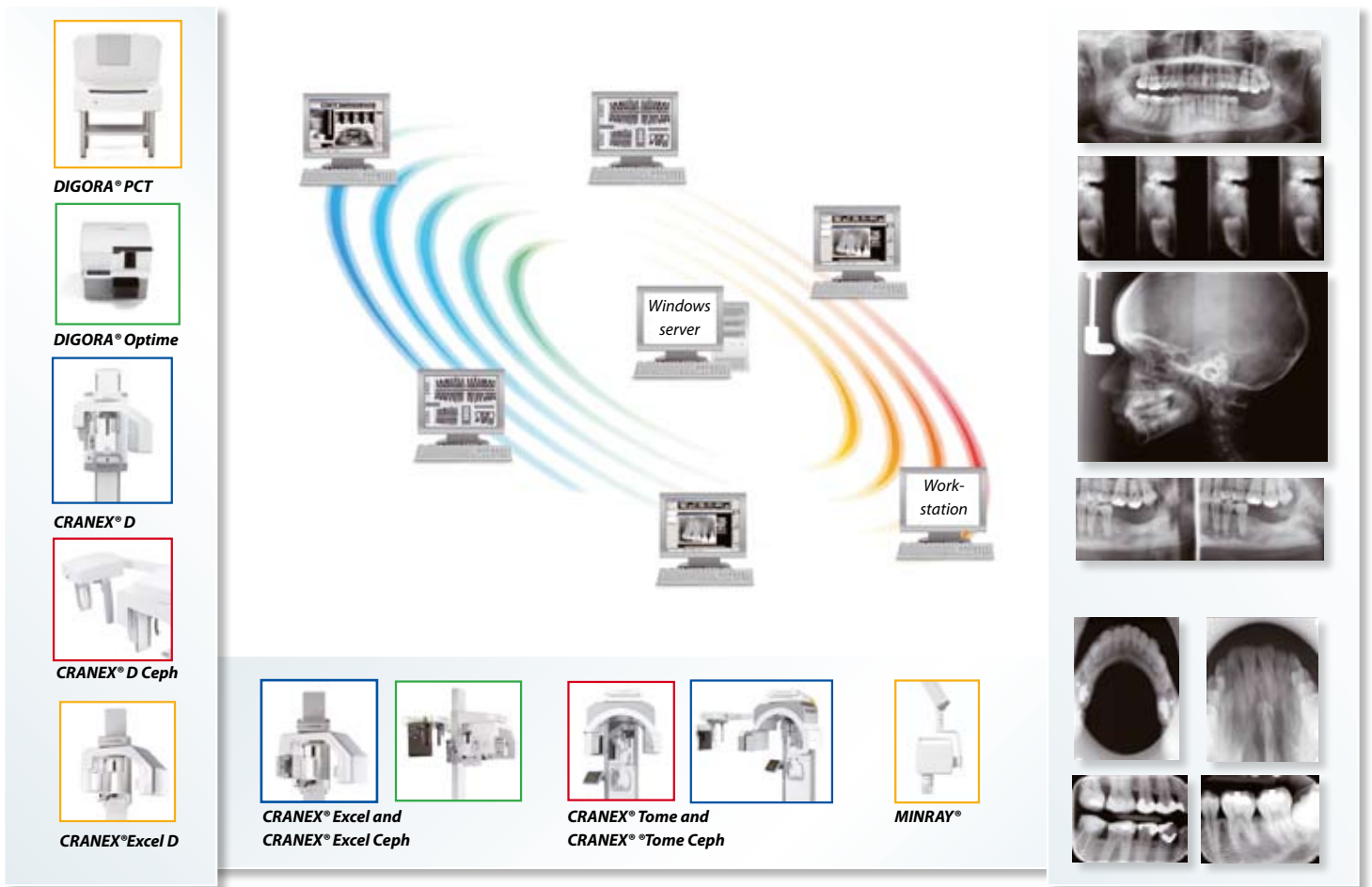
- 31 x 41 mm (size 2)
- 57 x 76 mm (size 4)



*Reusable Imaging Plates have plastic covers and can be used with SOREDEX x-ray cassettes without intensifying screens.*



# Excellent solution for digital dental imaging



The DIGORA° PCT from SOREDEX offers imaging quality, equipment reliability and versatility. As a result of our intensive research work in digital imaging technology we have developed the new – SOREDEX Digital World – concept.

SOREDEX offers systems for practically all digital dental imaging procedures, from basic intraoral imaging (DIGORA° Optime) to panoramic, cephalometric and even dedicated *spiral* and other tomographs. DIGORA° for Windows software makes the SOREDEX digital product family even more user friendly and

more compatible by offering superb image handling features. DIGORA° for Windows software is also available in a DICOM compatible version.

The SOREDEX Digital World concept is an excellent way of upgrading your dental clinic or practice to digital imaging.



## Technical data & system configuration:

Imaging plates	LOW (167 µm) Image size, pixels File size	NORMAL (125 µm) Image size, pixels File size	HIGH (85 µm) Image size, pixels File size	Readout time
15 x 30 cm Pan / Tomo	898 x 1796 3.08 MB	1200 x 2400 5.5 MB	1765 x 3529 11.88 MB	75 s
18 x 24 cm Cephalometric	1078 x 1437 2.96 MB	1440 x 1920 5.28 MB	2118 x 2824 11.4 MB	85 s
24 x 30 cm Cephalometric	1437 x 1796 4.92 MB	1920 x 2400 8.78 MB	2400 x 3000 (* 13.74 MB (*	100 s
8" x 10"	1219 x 1524 3.54 MB	1608 x 2016 6.18 MB	2395 x 2994 13.68 MB	85 s
10" x 12"	1524 x 1829 5.32 MB	2016 x 2424 9.32 MB	2471 x 2965 (** 13.98 MB (**	100 s



	LOW (85 µm) Image size, pixels File size	NORMAL (64 µm) Image size, pixels File size	HIGH (40 µm) Image size, pixels File size	Readout time
57 x 76 mm Occlusal (size 4)	892 x 670 1.1 MB	1184 x 890 2 MB	1900 x 1424 5.04 MB	70 s
31 x 41 mm Intraoral (size 2)	480 x 364 342 kB	640 x 484 604 kB	1024 x 772 1.54 MB	70 s
<b>Spatial resolution:</b>	4 - 6 lp/mm (* NOTE! 24 x 30 cm size: max. 5 lp/mm, pixel size 100 µm. (** NOTE! 10 x 12" size: max. 4.9 lp/mm, pixel size 103 µm. NOTE! Occlusal size: up to 8 lp/mm, pixel size 40 µm. NOTE! Size 2: up to 8 lp/mm, pixel size 40 µm.			
<b>Recommended dose</b>	Same as medium speed X-ray film exposure dose.			

- DIGORA® PCT unit for Imaging Plate readout
- Ethernet (RJ - 45) connection
- Windows based software (DIGORA® for Windows)
- SOREDEX Imaging Plates  
15 x 30, 18 x 24 and optional 24 x 30 cm or  
15 x 30 cm, 8 x 10" and optional 10 x 12"  
Optional occlusal size 4 (57 x 76 mm) and intraoral size 2 (31 x 41 mm)
- Cassettes without screens  
15 x 30, 18 x 24 and optional 24 x 30 cm or  
15 x 30 cm, 8 x 10" and optional 10 x 12"
- Imaging Plate Covers  
15 x 30, 18 x 24 and optional 24 x 30 cm or  
15 x 30 cm, 8 x 10" and optional 10 x 12"  
Optional occlusal size 4 (57 x 76 mm) and intraoral size 2 (31 x 41 mm).

### Imaging plate unit

Line voltage	Line Current	Power consumption	Laser classification	Operating environment:	Operating temperature:	Operating position:
100 – 240 V / 50 – 60 Hz (in some cases ON-LINE UPS recommended)	Less than 3 A	Max. 270 W	Class 1 product in accordance with 21 CFR Subchapter J and EN 60825-1.	Dental office or other dry and dustless space	Normal room temperature	On supplied stand or suitable countertop

### Computer requirements

	Single user or workstation PC	Network server PC
<b>Operating system</b>	Windows NT 4.0 SP6a, 2000 SP4, XP SP1 or SP2	Windows NT 4.0 Server SP6, 2000 Server SP4
<b>PC</b>	Pentium 4 CPU or better, CD-ROM, CD-RW drive recommended	Pentium 3 CPU or better, CD-ROM
<b>RAM</b>	256 MB or more	512 MB or more
<b>Hard disk</b>	20 GB or more	20 GB or more
<b>Monitor (minimum / recommended)</b>	17" XGA, 1024x768, True Color, 75 Hz / 19" UXGA, 1280x1024, True Color, 85 Hz	No requirement
<b>Display adapter</b>	16 MB video memory or more	No requirement
<b>Network adapter card</b>	100 Mbits/s Ethernet	10/100 Mbits/s Ethernet
<b>Network protocols</b>	TCP/IP *)	TCP/IP or NetBEUI
<b>Back-up</b>	Tape drive (SCSI) or other back-up device	Tape drive (SCSI) or other back-up device
<b>Other</b>	One workstation in network should have CD-RW drive for archive purposes	(UPS) Uninterruptible Power Supply

\*) NetBEUI is supported as an additional workstation protocol



**Head office and factory:**

**SOREDEX**

Nahkelantie 160, Tuusula  
P.O. Box 148, FI-04301 Tuusula  
Finland  
Tel. +358 45 7882 2000  
Fax +358 9 701 5261  
info@soredex.com

**Subsidiary, SOREDEX USA**

1245 W. Canal Street  
Milwaukee, WI 53233 U.S.A.  
Tel. +1 800 235 8854  
Fax +1 414 481 8665  
info@soredexusa.com

**Subsidiary, SOREDEX Germany**

**Subsidiary, SOREDEX Germany**

Schutterstrasse 12  
77746 Schutterwald  
Germany  
Tel: +49 (0) 781 28 41 98-0  
Fax: +49 (0) 781 28 41 98-30  
kontakt@soredex.de

SOREDEX designs, develops, manufactures and markets dental imaging systems, with an emphasis on innovative digital solutions. Operating worldwide, SOREDEX offers quality imaging systems of true diagnostic value, based on an in-depth understanding of the dental practice. Applying three decades of experience of imaging excellence, we offer reliable and easy-to-use solutions that help you focus on patient care.

SOREDEX digital imaging systems are innovative and accurate diagnostic tools that integrate seamlessly and easily into a dental practice, enhancing the imaging process and improving workflow. Our systems are designed to be simple and easy to use. They will make your dental practice more efficient and ultimately give you more time for your patients.

SOREDEX stands for innovation and value in dental X-ray technology.

MINRAY®, CRANEX®, SCANORA® 3D and DIGORA® are registered trademarks of SOREDEX, PaloDEX Group Oy. Other product names and trademarks are the property of their respective owners. CE marked, NB (CE) number 0537. Electric safety according to IEC 60601-1. Manufacturing complies with ISO 13485:2003, ISO 9001:2000 and ISO 14001:2004.

SOREDEX reserves the right to make changes in specification and features shown herein at any time without notice or obligation. Contact your SOREDEX representative for the most current information.  
© 2009 SOREDEX

72075-3 10/09 Printed in Finland