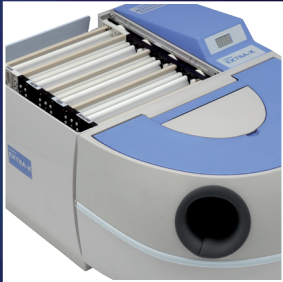
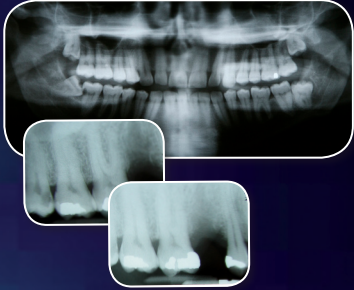


# Extra-X

High performance automatic daylight processor for intra-oral and extra-oral x-ray films



The Velopex Extra-X Processor can process all sizes of dental films from size 0 (22x35mm) intra-oral to full skull (24x30cm) Dry-to-Dry in under 5 minutes. The endo-interrupt facility allows intra-oral film (up to size 2, 30x40mm) to be removed (wet) after 2 minutes (after fixer). Unit features: auto-start and digital timer display. It comes with magnetic chemical agitation and a free chemical replenishment system to prolong chemical life.



Daylight loader is optional

<b>DIMENSIONS:</b>	<i>Width:</i> 510mm/20"
	<i>Height:</i> 340mm/13.5"
	<i>Depth:</i> 470mm/18.5" (- daylight loader) 740mm/29" (+ daylight loader)
<b>WEIGHT:</b>	<i>Empty:</i> 21Kg (46¼ lb)
	<i>Full tanks:</i> 27Kg (59½ lb)
<b>TANK CAPACITY:</b>	3.8 Litres/ 6.75Imp pints each
<b>VOLTAGE:</b>	100-120V, 200-240V (50/60Hz)
<b>CHEMICAL TEMP:</b>	<i>Developer:</i> 25.5°C (77°F)
	<i>Fixer:</i> 27.5°C (81.5°F)
<b>WARM-UP TIME:</b>	10 minutes approx.
<b>FILM FEED SPEED:</b>	470mm (18½") per min
<b>MAX FILM WIDTH:</b>	260mm (10.25")
<b>PROCESSING TIME:</b>	<i>Dry:</i> 5 mins approx.
	<i>Wet:</i> 2.5 mins approx.
<b>COMPLIES WITH:</b>	IEC EN 61010-1:2001 (2nd edition)



All our processors work best with Velopex Processing Chemicals



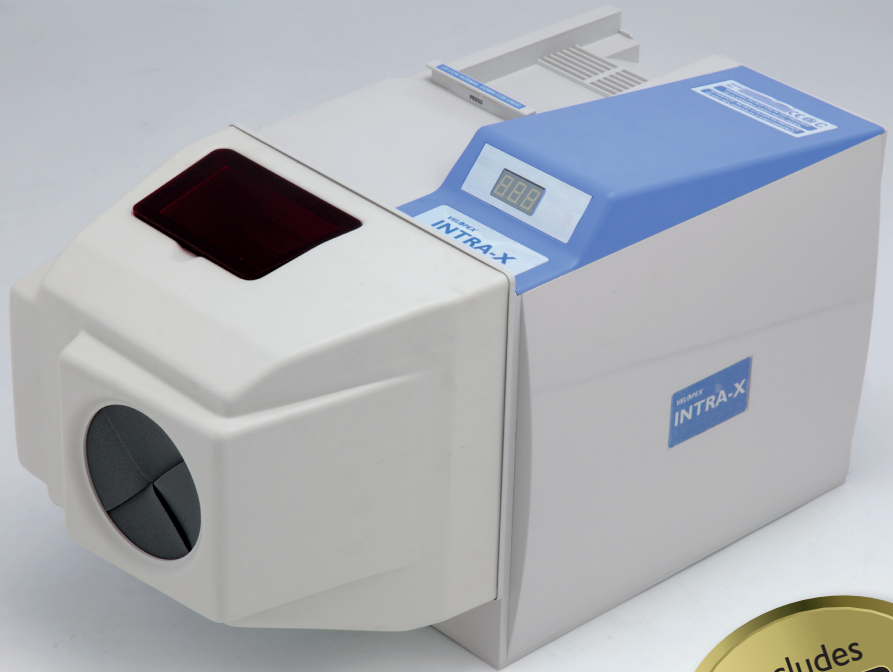
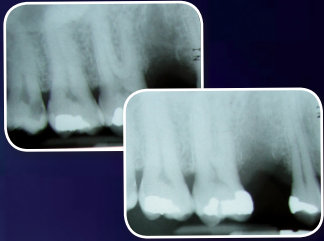
Barretts Green Road,  
Harlesden, London NW10 7AP  
Tel: +44 (0)20 8965 2913  
Fax: +44 (0)20 8963 1270

[www.velopex.com](http://www.velopex.com)

\*To qualify for the free two year warranty your unit will need to be serviced at the end of its first year of ownership (between 11 and 14 months) by a Velopex technician.

# Intra-X

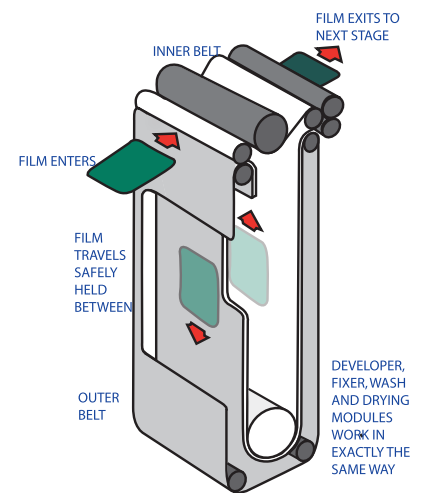
High performance automatic daylight processor for intra-oral x-ray films



The Velopex Intra-X Processor (Daylight) can process all sizes of Intra-oral dental films from size 0 (22x35mm) to size 4 (57x76mm) Dry-to-Dry In under 5 minutes – endo-interrupt facility (size 2, 30x40mm) allows intra-oral film to be removed (wet) after 2 minutes (after fixer). Unit features: auto-start and digital timer display. It comes with magnetic chemical agitation and a free chemical replenishment system to prolong chemical life.



<b>DIMENSIONS:</b>	<i>Width:</i> 290mm/11½"
	<i>Height:</i> 315mm/12½"
	<i>Depth:</i> 635mm/25" (+ daylight loader)
	435mm/17" (- daylight loader)
<b>WEIGHT:</b>	<i>Empty:</i> 12.1Kg (26½ lb)
	<i>Full tanks:</i> 13.9Kg (30½ lb)
<b>TANK CAPACITY:</b>	1.4 Litres/ 2.5 Imp pints each
<b>VOLTAGE:</b>	220-240V, 110-120V (50/60Hz)
<b>CHEMICAL TEMP:</b>	<i>Developer:</i> 25°C (77°F)
	<i>Fixer:</i> 27.5°C (81.5°F)
<b>WARM-UP TIME:</b>	10 minutes approx.
<b>FILM FEED SPEED:</b>	470mm (18½") per min
<b>MAX FILM WIDTH:</b>	65mm (2½")
<b>PROCESSING TIME:</b>	<i>Dry:</i> 5 mins approx.
	<i>Wet:</i> 2.5 mins approx.
<b>COMPLIES WITH:</b>	IEC EN 61010-1:2001 (2nd edition)



[www.velopex.com](http://www.velopex.com)

\*To qualify for the free two year warranty your unit will need to be serviced at the end of its first year of ownership (between 11 and 14 months) by a Velopex technician.