

API ADAPTERS, COUPLERS AND ACCESSORIES



EMCO WHEATON

A Gardner Denver Product

RAIL

MARINE

API ADAPTERS, COUPLERS AND ACCESSORIES

API Adapters and couplers form the connection between the road tanker and the loading rack. The adapters are dual purpose as they are also used as the unloading valve at the service station.

Emco Wheaton API adapters and couplers conform to API RP1004 and are certified to comply with EN13083

The Emco Wheaton range are designed to incorporate maximum safety, high flow, low-pressure drop, easy maintenance and offer a long service life. Each adapter and coupler meets the recognized international standards and industry codes of practice.

The adapters have been designed with a flat base to ensure full product drainage when unloading and are the ideal choice for any organization involved in the transportation of fuels.

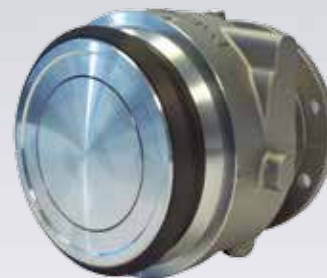
Our API adapters, with their aluminium body, hard anodised indexible nose ring and flat bottom set the standard in terms of design features and build quality. Each model shares common spare parts minimising maintenance costs and reducing spare parts inventory.

We are proud to offer one of the most comprehensive range on the market with each incorporating a range of patented features which help ensure they are able to offer trouble free, and spill free operation.

ADAPTERS

F5000 – Non-Openable API Adapter

- Usually specified for loading only where it is opened by the API coupler.
- KKM seals come as standard for compatibility with high-octane fuels and additives.
- Available with or without a sight glass.
- Threaded mounting bosses are provided for fitting the F0567 air interlock when required.



F5001 – Openable API Adapter

- Hard anodized replaceable nose ring that can be indexed through four positions for extended life.
- KKM seals come as standard for compatibility with high-octane fuels and additives.
- Two-stage fixed aluminium handle for manual valve opening and to give positive indication of valve position.
- Threaded mounting bosses are provided for fitting the F0567 air interlock when required.



F5002 – Openable API Adapter

- The F5002 also includes all the features and benefits included on the F5000 and F5001 products.
- This adaptor includes a sight glass with float allowing for a visual check of the product in the pipe-work.



COUPLERS

J0452 API Coupler

- Supercedes the successful K2/K2P couplers.
- Maintenance friendly.
- The most advanced coupler in the market today.
- In-situ nose seal replacement.
- Lowest leakage on disconnect in class.
- SNAP ON / SNAP OFF design.
- Superior sealing technology, ergonomic design.
- Bevelled lip for ease of operation.
- Optional integrated pump with filter element.
- Wide range of spare kits available.



J0451 API Coupler

- Industry standard for more than 30 years.
- Maintenance friendly.
- Lightweight design.
- In-situ nose seal replacement.
- Lowest leakage on disconnect in class.
- Better load distribution.
- Superior sealing technology, with three seal variants available.
- Bevelled lip for ease of operation.
- Ergonomic design.
- Wide range of spare kits available.



CAMSEC® Coupler

- Industry standard in France for more than 30 years.
- French metrology approved check valve.
- Lowest leakage on disconnect in class.
- Superior sealing technology, ergonomic design.
- ATEX certified.
- Maintenance friendly.
- In-situ nose seal replacement.
- SLIDE ON / PULL OFF design.
- Bevelled lip for ease of operation.
- Wide range of spare kits available.



API ADAPTER ACCESSORIES

F0459 – API Gravity Drop Adaptor

- Forms a link between the tanker and the unloading hose for gravity assisted discharge of the product.
- High quality die-cast body with brass cams to reduce wear on the API nose and support the weight of the hose.
- A stainless steel chain is supplied as standard to avoid loss and theft and a Buna seal is also fitted as standard.
- Available in 2 1/2", 3" and 4" Surelok variants and 3" and 4" threaded variants.



F0499 – API Dust Cap

- Protects the poppet face of the API adapter and prolongs its life.
- Is suitable for all Emco Wheaton API adapters and is made of a high quality die cast material.
- In countries following the ADR code of practice it is mandatory to fit a third stop valve in addition to the bottom/emergency valve and API adaptor.
- The radial cam and lug have been designed for one hand operation and the tough glass-filled nylon cams reduce wear and eliminate the risk of corrosion.



F0091 – 00564151 – 4" TTMA Flange Sight Glass

- Allows a clear view of the liquid in the tanker's run off pipe.
- Compatible with petroleum products and is made from durable annealed acrylic.
- Has 4" TTMA flange for compatibility with the API adaptor (it is generally fitted immediately behind the API adaptor flange).



446700 – 4" TTMA Pipe Flange

- Made of pressed carbon steel and suitable for mounting Emco Wheaton API adapters.
- Also available in aluminium.



Designed to
incorporate
maximum
safety, high flow,
low-pressure
drop, easy
maintenance
and offer a long
service life



MANUFACTURING FACILITIES / SALES OFFICE

Emco Wheaton

Channel Road,
Westwood Industrial Estate,
Margate,
Kent,
CT9 4JR UK
Phone +44 1843 221521 • Fax +44 1843 295444

Emco Wheaton Corp.

2390 South Service Road West,
Oakville,
Ontario,
L6L 5M9
CANADA
Phone: 905-829-8619 • Fax: 905-829-8620

Emco Wheaton GmbH

Emcostraße 2-4,
35274,
Kirchhain,
Germany
Phone +49 6422 84-0 • Fax +49 6422 5100

Emco Wheaton USA, Inc.

9111 Jackrabbit Road,
Houston,
Texas,
77095
USA
Phone +1 281 856-1300 • Fax +1 281 856-1325

SALES OFFICE

Emco Wheaton France

Emco Wheaton Division
Immeuble le Miroir
15-17 Bld du Général De Gaulle
92542 Montrouge Cedex
France
Phone + 33 1 46 12 41 41 • Fax + 33 1 46 12 41 61

Emco Wheaton GmbH

Blue Danube Park,
Objekt 60,
2100 Korneuburg,
Austria
Phone +43 2262 64281-0 • Fax +43 2262 6428120

Emco Wheaton GmbH

Presnenskaya emb. 10
Block C – Embankment Tower – of. 526
123317 Moscow
Russia
Phone +7 495 9677612 • Fax +7 495 9677600

Emco Wheaton Asia Pacific

21-5F IOI Business Park, Bandar Puchong Jaya,
Puchong, 47170,
Selangor, Malaysia
Phone +603 8075 7500
Fax +603 8075 4100
Email cwhu@emcowheaton.com

Gardner Denver International Ltd

PO Box 30804
Diraz, Manama
Bahrain
Phone + 973 17813187 • Fax +973 17813186

www.emcowheaton.com

assist@emcowheaton.com

