

SWIVEL JOINTS | INFORMATION

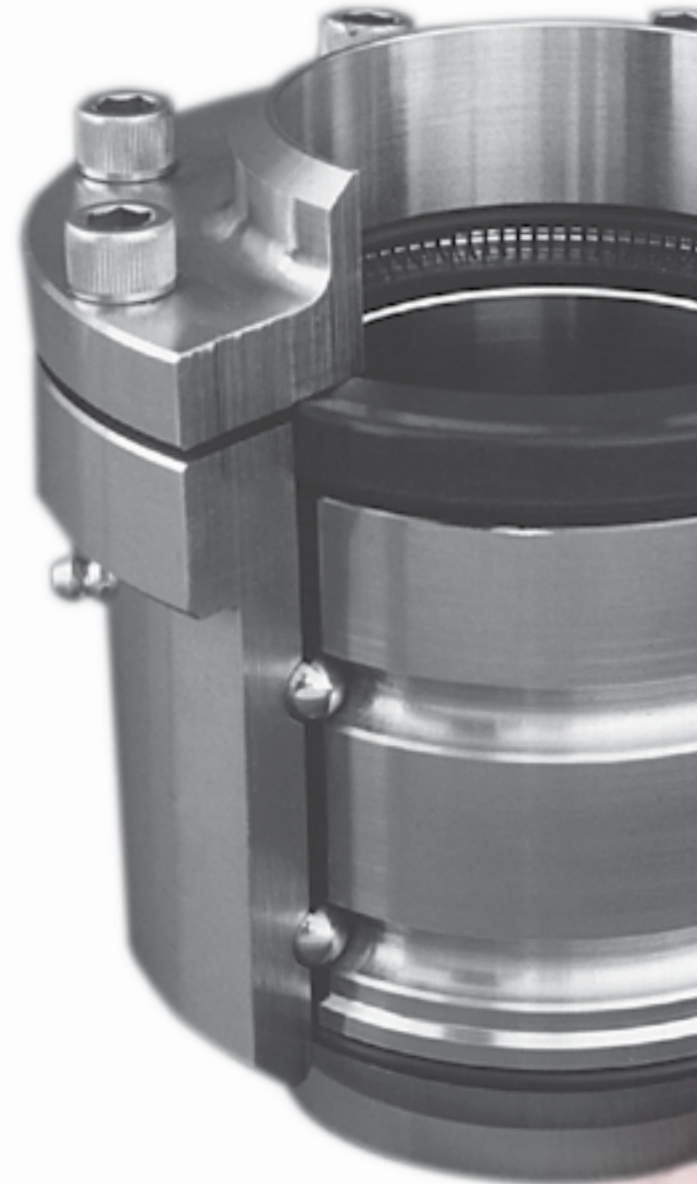
SWIVEL JOINTS

Pipelines, which are rigid structures, can be rendered movable by using EMCO swivel joints. This is necessary where the use of a hose is unacceptable. The pipelines lose none of their characteristics for carrying fluids, in fact they gain the advantage of 360° rotation in all planes. EMCO swivel joints are used where easy handling, operational safety and low-wear characteristics are required.

The rotation function is achieved by means of one or two integrated ball tracks- comparable to ball-bearing. The ball track is hardened and precision ground, with the exception of the aluminium version.

Sealing is achieved by means of a product specific seal, which is pressed against the axial sealing surface by its prestress or spring. The sealing surfaces of carbon steel versions are plated with stainless steel and precision finished. Sealing systems according to TA Luft (regulation for air protection) are available.

The load capacity of the joint is determined by the combination of internal pressure, bending moment and weight. Therefore, only we can determine the permissible load in each individual case. In any case, this load will be above the permissible load for the weld end. Regular external visual inspection will usually suffice as far as maintenance of the EMCO swivel joints is concerned. Each unit is accompanied by instructions describing maintenance and relubrication if necessary.



www.emcowheaton.com

assist@emcowheaton.com

Phone +49 6422 84-0

Fax +49 6422 5100

Emco Wheaton GmbH
Emcostraße 2-4 • 35274
Kirchhain • Germany



SWIVEL JOINTS | INFORMATION



Style	Description
Style 20 straight swivel joint	360° rotation around one axis

Style	Description
Style 40 sing swivel joint with two elbows	360° rotation around one axis

Style	Description
Style 50 double swivel joint with one elbow at one side and straight at the other side	360° rotation around two perpendicular axes

Style	Description
Style 10 triple swivel joint straight on both sides	360° rotation around two perpendicular axes

Style	Description
Style 30 triple swivel joint straight on both sides	360° rotation around one axes

Style	Description
Style 60 double swivel joint straight on both sides	360° rotation around two perpendicular axes

Style	Description
Style 70 double swivel joint with two elbows	360° rotation around two perpendicular axes

Style	Description
Style 80 triple swivel joint with one elbow at one side and straight on the other sides	360° rotation around three perpendicular axis's

BASIC TYPES

Swivel joints for medium duty

Swivel joints made of aluminium. The ball tracks are unhardened. Because of this only a moderate load is permissible.

Main area of use: EMCO loading arms for road and rail tankers and EMCO floating suction systems.

Swivel joints for heavy duty

Swivel joints for one or two hardened and polished ball tracks. Sealing surfaces plated with stainless steel. The swivel joints are internally flanged, making the seals easier accessible.

Basic forms D2000 sandwich design (flangeable) and D1010.

Main area of use: articulated pipelines of all kinds.

Swivel joints for heavy duty with encapsulated ball track

Variant of basic forms D2000 and D1010. The ball tracks are encapsulated so that the liquid cannot get into the ball tracks in the event of leak. Leak control ports allow the leakage to escape for visible indication.

Main area of use: articulated pipelines of all types, especially for media that would destroy the ball tracks in the event of a leak.

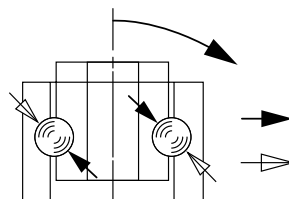
Swivel joints for heavy duty special applications

Further development of basic forms D2000 and D1010. Swivel joints for solving very special problems (lined swivel joints, safety swivel joints, etc.)

Main area of use: Piping of products to which normal metals are not resistant, piping of highly dangerous products, piping of cryogenic products.

BASIC CONFIGURATION

EMCO WHEATON swivel joints can also be supplied in the configurations as shown. The indicated style numbering is used internationally (international style).



www.emcowheaton.com

assist@emcowheaton.com

Phone +49 6422 84-0

Fax +49 6422 5100

Emco Wheaton GmbH
Emcostraße 2-4 • 35274
Kirchhain • Germany

