



## Wicked Wheels

Metal & Concrete  
Skateboarding Parks  
Age range 8 to adult



Wicksteed - *Naturally*

Wicksteed works closely with the community to plan, design and build sport parks that both excite and challenge youngsters. A well-used and popular skate park can become an enviable asset in any community.

The choice between metal or concrete skateboarding areas is yours. We are able to create action sports parks in either specification which will challenge experienced skaters, boarders and bikers as well as enabling beginners to practice their skills towards proficiency.

All our Wicked Wheels Skateparks are designed to BS EN 14974:2006 – the current Roller-Sports Equipment Safety Standard.



### Metal Skateboarding Parks

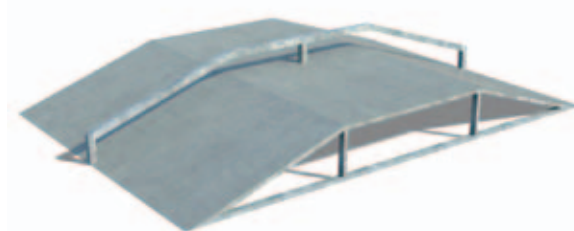
The standard support structure of our metal skateboarding modules is an open framework of galvanised steel, which can be fully enclosed if required. The all-metal surface is 4m fully welded mild steel plate, coated with two layers of black anti-slip paint. The surface is solid, ensuring potential noise is deadened.



### Twin Grindwall Funbox

Product code 6190-051

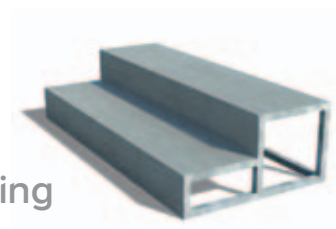
Length: 3603mm  
Max Width: 2700mm  
Deck Height: 392mm  
Max Grind Rail Height: 588mm



### Fun Box with Grind Rail

Product code 6190-035

Length: 3603mm  
Width: 2500mm  
Deck Height: 392mm  
Grind Rail Height: 592mm



### Grinding Steps

Product code 6190-052

Length: 1200mm  
Width: 2500mm  
Top Step Height: 600mm  
Lower Step Height: 300mm



### High Quarter Pipe

Product code 6190-056

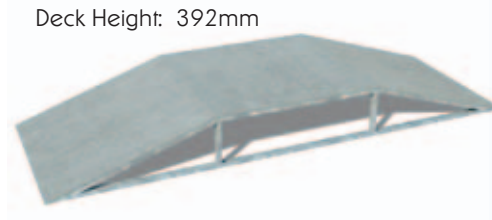
Length: 4392mm  
Width: 3750mm  
Deck Height: 1800mm  
Guardrail Height: 2800mm



### Standard Half Pipe

Product code 6190-059

Length: 9419mm  
Width: 3750mm  
Deck Height: 1250mm  
Guardrail Height: 2250mm



### Double Ramp

Product code 6190-009

Length: 3603mm  
Width: 1250mm  
Deck Height: 392mm

## Wicked Wheels Metal Skateboarding Parks

### Twin Banks

Product code 6190-053

Length: 5076mm  
Width: 3750mm  
Deck Height: 1250mm  
Guardrail Height: 2250mm



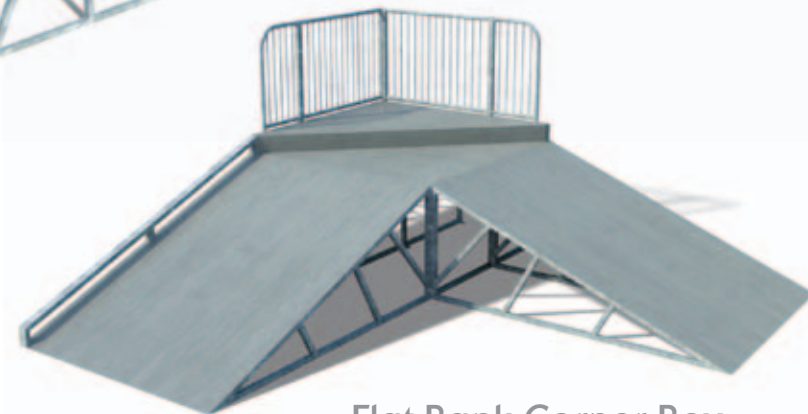
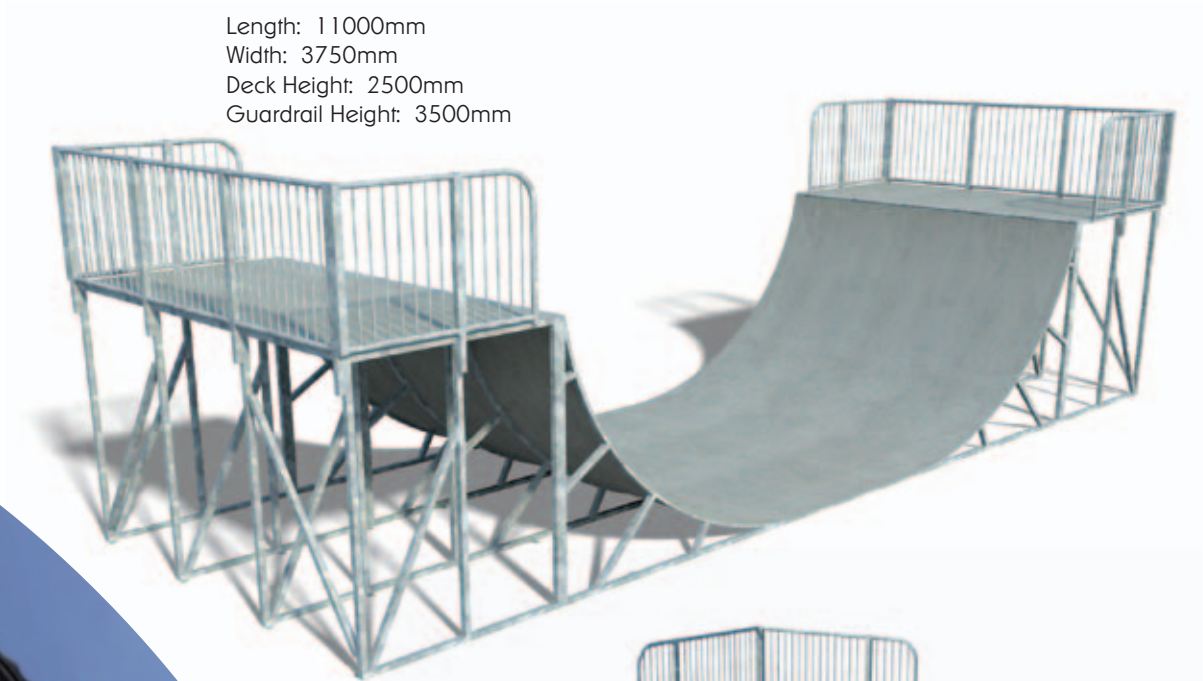
The standard support structure of Wicked Wheels modules is an open framework. The facility pictured here has the optional enclosed framework



**High Half Pipe**

Product code 6190-058

Length: 11000mm  
Width: 3750mm  
Deck Height: 2500mm  
Guardrail Height: 3500mm



**Flat Bank Corner Box with Grind Wall & Rail**

Product code 6190-054

Length: 5776mm  
Width: 5776mm  
Deck Height: 1250mm  
Grind Rail Height: 1450mm



**Spine**

Product code 6190-060

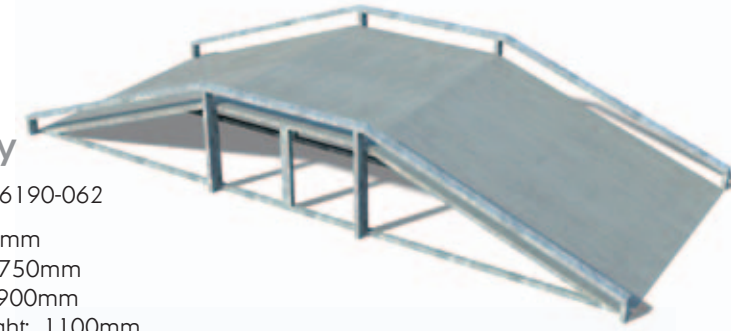
Length: 2500mm  
Width: 2500mm  
Height: 900mm



**Driveway**

Product code 6190-062

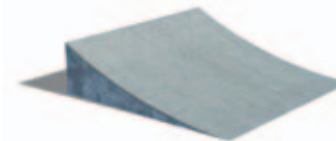
Length: 6710mm  
Max. Width: 2750mm  
Deck Height: 900mm  
Guardrail Height: 1100mm



**High Jump Box**

Product code 6190-055

Length: 7472mm  
Width: 3750mm  
Deck Height: 1250mm  
Guardrail Height: 2250mm



**Low Curved Ramp**

Product code 6190-039

Length: 1200mm  
Width: 1200mm  
Deck Height: 300mm

**Standard Half Pipe with Extended Quarter Pipe**

Product code 6190-057

Length: 11813mm  
Width: 3750mm  
Deck Height: 1250mm  
Guardrail Height: 2250mm



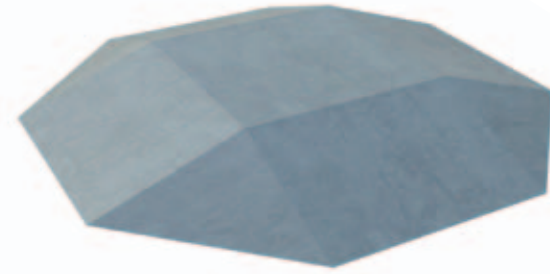
**Low Quarter Pipe**

Product code 6190-066

Length: 4200mm  
Width: 3750mm  
Deck Height: 1250mm  
Guardrail Height: 2250mm



**Wicked Wheels**  
Metal Skateboarding Parks



**Pyramid Box**

Product code 6190-065

Length: 3550mm  
Width: 3550mm  
Deck Height: 360mm

**Junior Jump**

Product code 6190-016

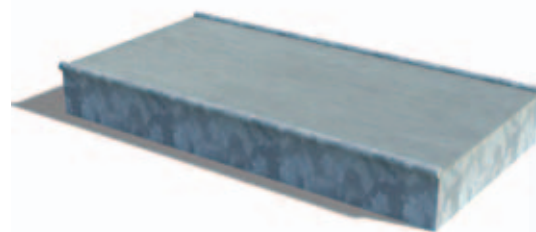
Length: 1211mm  
Width: 1250mm  
Height: 396mm



**Low Jump Box with Grind Rails**

Product code 6190-037

Length: 2400mm  
Width: 1200mm  
Deck Height: 300mm  
[For installation with Low Flat Ramp(s) and/or Low Curved Ramp(s)]



**Low Flat Ramp**

Product code 6190-038

Length: 1200mm  
Width: 1200mm  
Deck Height: 300mm



**Straight Grind Rail**

Product code 6190-010

Length: 3100mm  
Height: 200mm



**Curved Grind Rail**

Product code 6190-013

Length: 2710mm  
Area Width: 700mm  
Height: 200mm



**Wicked Wheels**  
Concrete Skateboarding Parks

**Concrete Skateboarding Parks**

Constructed using RC50 concrete in either pre-cast or spray these concrete skate parks offer unrivalled accuracy and smoothness, are cost-effective, have a life expectancy of over 40 years and are guaranteed for 15 years.

Skatepark Design 1



Skatepark Design 2



Skatepark Design 3



Skatepark Design 4



We have four standard concrete park layouts as shown here, but bespoke design is also available.



## Parkour

### Freerunning Zones

To add an extra edginess to physical outdoor pursuits, Wicksteed has entered the world of Freerunning, or Parkour; a non-competitive sport in which practitioners move freely over any given terrain using only the abilities of the body.

This daring and often dangerous urban sport engages, inspires and motivates young people for whom more traditional physical exercise has less appeal.

To find out much more, check out our separate Parkour brochure and designs.



PARKOUR GENERATIONS