

Busbar systems

Accessories



Spacers

for RiLine60 busbar supports (flat busbar system)

For adapting 12 x 5 and 12 x 10 mm size busbars.

For busbar supports

- SV 9340.000/.010 (3-pole), see page 350.
- SV 9340.004 (4-pole), see page 380.

| Packs of | Model No. SV |
|----------|--------------|
| 12 | 9340.090 |



B
2.7

Busbar systems



Insert strip

for Mini-PLS component adaptors and quick-fit component adaptors

To extend the construction width. Width 9 mm.

Material:
ABS

Colour:
RAL 7035

| Packs of | Model No. SV |
|----------|--------------|
| 2 | 9623.000 |



Insert strip

for OM and OT adaptors/supports

To extend the construction width in a 10 mm pitch pattern. May be bayed as often as required on both sides. With integral cable duct.

Material:
PA 6.6

Colour:
RAL 7035

Supply includes:
6 connection pins.

| For design | Packs of | Model No. SV |
|------------|----------|--------------|
| OM | 2 | 9340.290 |
| OT | 2 | 9341.290 |



Insert strip

for circuit-breaker component adaptors

To extend the construction width from 140 mm to 190 mm. Width: 25 mm.

Material:
ABS

Colour:
RAL 7035

Note:
4 units (1 set) are needed to widen a component adaptor.

| For | Packs of | Model No. SV |
|----------------------------|--------------|--------------|
| SV 9342.700 SV 9342.710 | 4 (1 set) | 9342.720 |



Connection pin

for OM and OT adaptors/supports

For the mechanical connection of adaptors and supports.

Material:

PA 6.6

Colour:

RAL 5015

| Packs of | Model No. SV |
|----------|--------------|
| 20 | 9340.280 |



Sliding blocks

for circuit-breaker component adaptor (3-pole)

For additional power circuit breakers with more than two attachment points.

| For | With threaded insert | Packs of | Model No. SV |
|------------------|----------------------|----------|--------------|
| SV 9342.500/.510 | M3/M4 | 6 | 9342.560 |
| SV 9342.540/.550 | M4/M5 | 6 | 9342.640 |



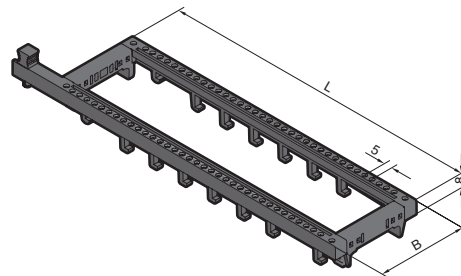
Support frame

for OM and OT adaptors/supports

For use as a spare or for the configuration of replacement assemblies.

Material:

PA 6.6



For adaptor width 45 mm

| For design | Width (B) mm | Length (L) mm | Packs of | Model No. SV |
|------------|--------------|---------------|----------|--------------|
| OM | 45 | 170 | 5 | 9341.800 |
| OT | 45 | 195 | 5 | 9341.810 |
| OM/OT | 45 | 237 | 5 | 9341.820 |

For adaptor width 55 mm

| For design | Width (B) mm | Length (L) mm | Packs of | Model No. SV |
|------------|--------------|---------------|----------|--------------|
| OM | 55 | 170 | 5 | 9341.830 |
| OT | 55 | 195 | 5 | 9341.840 |
| OM/OT | 55 | 237 | 5 | 9341.850 |



Support frame

with fitted sub-unit, for OM and OT Premium adaptors

To prepare spare assemblies with fully prewired motor starters for OM/OT Premium adaptor (SV 9340.900/.910, 9341.900).

Connection data of the sub-unit:

3 main contacts (1.5 – 6 mm²), 690 V~
8 auxiliary contacts (0.5 – 2.5 mm²), 300 V~

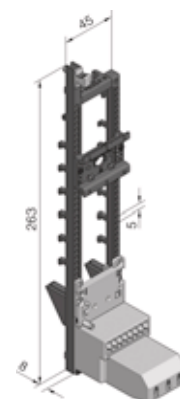
Material:

PA 6.6

Supply includes:

Sub-unit, pin block, support bar and support frame support.

| Packs of | Model No. SV |
|----------|--------------|
| 2 | 9341.970 |



Busbar systems

Accessories



Support frame supports

for OM adaptors

To reinforce support frames 45 x 237 mm and 55 x 237 mm for use on OM adaptors.

Material:

PA 6.6

| Packs of | Model No. SV |
|----------|-----------------|
| 10 | 9340.800 |



PinBlock

for support frames

For reliable attachment and positioning of the contactor on motor starter combinations, for simple clip-on mounting onto the support frame. Individual vertical positioning is achieved by relocating the PinBlock.

Material:

PA 6.6

| For support frames | Packs of | Model No. SV |
|--------------------|----------|-----------------|
| 45 mm wide | 5 | 9342.800 |
| 55 mm wide | 5 | 9342.810 |



PinBlock Plus

for starters with increased contactor attachment

Mounted by simply clipping onto the PinBlock (SV 9342.800/.810).

Material:

PA 6.6

| Packs of | Model No. SV |
|----------|-----------------|
| 5 | 9342.820 |



Cable set

Pre-assembled connection cables for individual connection of switchgear, top-mounted on OM/OT adaptors with tension spring clamps. Length: 130 mm.

Material:

PVC insulation.

Temperature-resistant up to 105°C.

Wire ends ultrasonically compressed at both ends.

Note:

For current carrying capacity of the insulated supply cables, see page 1236.

| Design | Packs of | Model No. SV |
|--|----------|-----------------|
| AWG 14 = 2.08 mm ² ± 2.5 mm ² | 15 | 9340.850 |
| AWG 12 = 3.31 mm ² ± 4 mm ² | 15 | 9340.860 |
| AWG 10 = 5.26 mm ² ± 6 mm ² | 15 | 9340.870 |
| AWG 8 = 8.37 mm ² ± 10 mm ² | 6 | 9340.880 |
| AWG 6 = 13.3 mm ² ± 16 mm ² | 6 | 9340.890 |

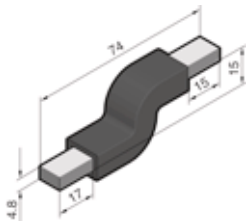
AWG = American Wire Gauges

B
2.7

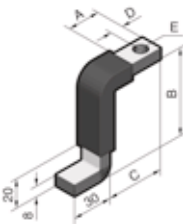
Busbar systems



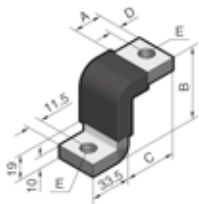
SV 9342.570



SV 9342.660 – SV 9342.690



SV 9342.770 – SV 9342.790



Connection bracket

for circuit-breaker component adaptors

Pre-assembled, laminated flat copper for connecting standard commercially available moulded case circuit-breakers (MCCB).

Material:

Electrolyte copper F20

Insulation:

Vinyl compound.

Temperature resistant up to 105°C.

Fire protection corresponding to UL 94-V0.

| Dimensions ¹⁾ mm | For circuit-breaker component adaptor | For connecting moulded case circuit-breakers (MCCB), make (model) | Packs of ²⁾ | Model No. SV |
|--------------------------------|--|---|------------------------|-----------------|
| 6 x 9 x 0.8 | SV 9342.500/.510 SV 9342.540/.550 | Moeller (NZM1) | 3 | 9342.570 |
| 10 x 15.5 x 0.8 | SV 9342.600/.610 | ABB (T3), GE (FE) | 3 | 9342.660 |
| | | Merlin Gerin (NS100/160/250), Telemecanique (GV7) | 3 | 9342.670 |
| | | ABB (S3), Moeller (NZM2), Siemens (VL250) | 3 | 9342.680 |
| | | Siemens (VL160X, VL160) | 3 | 9342.690 |
| 10 x 32.0 x 1.0 | SV 9342.700/.710 | ABB (T5) | 3 | 9342.770 |
| | | ABB (S5), Merlin Gerin (NS400/630) | 3 | 9342.780 |
| | | Moeller (NZM3) | 3 | 9342.790 |

¹⁾ Number of lamina x lamina width x lamina thickness

²⁾ 3 = 1 set

| Model No. SV | A mm | B mm | C mm | D mm | E mm |
|--------------|---------|---------|---------|---------|---------|
| 9342.660 | 26 | 65 | 43 | 9 | Ø 10 |
| 9342.670 | 19 | 66 | 36 | 10 | Ø 10 |
| 9342.680 | 23 | 71 | 40 | 9 | Ø 10 |
| 9342.690 | 23 | 67 | 40 | 11 | Ø 7 |
| 9342.770 | 26 | 51 | 43 | 9 | Ø 12 |
| 9342.780 | 29 | 57 | 46 | 12 | Ø 12 |
| 9342.790 | 28 | 62 | 38 | 14 | Ø 12 |

ST-Combi connector

for OM and OT Premium adaptors

May be used as a spare. With tension spring clamp at the outlet end.

Material:

PA 6.6

| Design | Packs of | Model No. SV |
|--------------------------------------|----------|-----------------|
| 3-pole 1.5 – 4 mm ² | 5 | 9341.980 |
| 8-pole 0.25 – 2.5 mm ² | 5 | 9341.990 |

Busbar systems

Accessories



Support rails 35 x 10 mm for OM and OT adaptors/supports

Material:
PA 6.6

Supply includes:
Assembly screws.

For attaching to the adaptor section

| Design | Width mm | Packs of | Model No. SV |
|----------------------|----------|----------|-----------------|
| TS 45C ¹⁾ | 45 | 5 | 9342.850 |
| TS 45D | 45 | 5 | 9342.860 |
| TS 55C ¹⁾ | 55 | 5 | 9342.920 |
| TS 55D | 55 | 5 | 9342.930 |

¹⁾ With anti-slip guard for motor circuit-breaker.



Support rails 35 x 10 mm for multi-functional component adaptors

Material:
PA 6.6

Supply includes:
Assembly screws.

For attaching to the support frame

| Design | Width mm | Packs of | Model No. SV |
|------------------------|----------|----------|-----------------|
| TS 45A ¹⁾ | 45 | 5 | 9342.830 |
| TS 45B | 45 | 5 | 9342.840 |
| TS 45B-V ²⁾ | 45 | 5 | 9342.870 |
| TS 55A ¹⁾ | 55 | 5 | 9342.900 |
| TS 55B | 55 | 5 | 9342.910 |
| TS 55B-V ²⁾ | 55 | 5 | 9342.940 |

¹⁾ With anti-slip guard for motor circuit-breaker.

²⁾ With latch for retrospective locking of the support rail after the switchgear has been assembled.



Support rails 35 x 7.5 mm for Mini-PLS component adaptors

Material:
Sheet steel, zinc-plated, passivated

Supply includes:
Assembly screws and side end brackets.

| Width mm | Packs of | Model No. SV |
|----------|----------|-----------------|
| 45 | 5 | 9320.090 |
| 54 | 5 | 9320.100 |

| Width mm | Packs of | Model No. SV |
|----------|----------|-----------------|
| 45 | 10 | 9320.150 |
| 54 | 10 | 3548.000 |
| 72 | 10 | 3549.000 |



Support rails 35 x 7.5 mm for OM and OT adaptors/supports

For assembly on 55 mm wide OM and OT adaptors/supports with 10 mm wide adaptor extension pieces mounted on the right and left. Arrangement of the mounting hole for central configuration on 55 mm wide adaptor section or support frame.

Material:
Sheet steel, zinc-plated, passivated

Supply includes:
Assembly screws and side end brackets.

| Width mm | Packs of | Model No. SV |
|----------|----------|-----------------|
| 72 | 5 | 9342.980 |





Support rail 35 x 15 mm for component adaptors and Mini-PLS component adaptors

For SV 9342.400/.410, SV 9350.420/.430,
SV 9629.000.

Material:
Sheet steel, zinc-plated, passivated

Supply includes:
Assembly screws and side end brackets.

| Width mm | Packs of | Model No. SV |
|----------|----------|--------------|
| 72 | 5 | 9320.120 |



Support rails 35 x 15 mm for OM and OT adaptors

For attaching to the adaptor section.

Material:
Sheet steel, zinc-plated, passivated

Supply includes:
Assembly screws and side end brackets.

| Width mm | Packs of | Model No. SV |
|----------|----------|--------------|
| 45 | 5 | 9342.880 |
| 55 | 5 | 9342.950 |



Plug-in connector

For fitting the AS-interface load feeder module
with matching support 3RK1 901-3CA00
(Siemens) to the multi-functional component
adaptor.

| For | Packs of | Model No. SV |
|--|----------|--------------|
| Mini-PLS component adaptor (width 45/54 mm) | 1 | 9623.100 |
| Multi-functional component adaptor (width 45 mm) | 1 | 9320.110 |



Mounting clip

**For multi-functional component adaptors
(45 mm construction width).**

For additional latching of motor starter combina-
tions.

Supply includes:
Support rails, 45 mm wide.

| Packs of | Model No. SV |
|----------|--------------|
| 5 | 9320.140 |



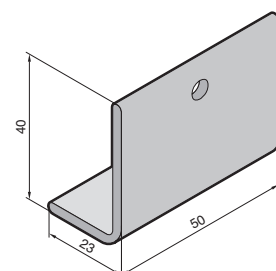
Cover for NH fused isolators, size 00

Increases contact hazard protection between the
strip chassis and the base tray.

Material:
PVC

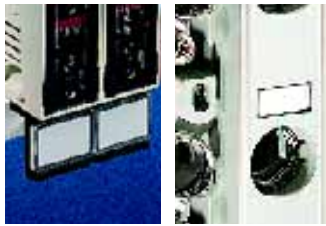
Colour:
RAL 7035

| Packs of | Model No. SV |
|----------|--------------|
| 2 | 9341.230 |



Busbar systems

Accessories



1

2

1 Identification label support

for NH fused isolators, size 00

For clip-on mounting on the isolator housing.

2 Identification labels

for bus-mounting fuse bases

| Packs of | Model No. SV |
|----------|--------------|
| 6 | 3595.010 |

| Packs of | Model No. SV |
|----------|--------------|
| 100 | 9320.080 |



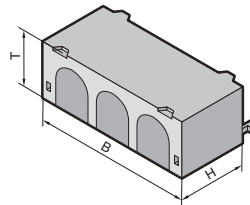
Connection space cover

for NH isolators

- For extending the contact hazard protection cover, e. g. when using ring terminals with a long collar.
- Bayable as required at the top and bottom.

Material:

Polyamide PA6



| For NH isolators | Packs of | Model No. SV |
|------------------|----------|--------------|
| Size 00 | 2 | 9344.520 |
| Size 1 | 2 | 9344.530 |
| Size 2 | 2 | 9344.540 |
| Size 3 | 2 | 9344.550 |

| Model No. SV | W (B) mm | H mm | D (T) mm |
|--------------|----------|------|----------|
| 9344.520 | 106 | 46 | 37 |
| 9344.530 | 184 | 70 | 42 |
| 9344.540 | 210 | 70 | 42 |
| 9344.550 | 250 | 70 | 42 |



1



2

Micro-switch

for NH isolators/NH fused isolators, size 00

To indicate the switch position of the NH unit (cover).

| For NH unit | Packs of | Model No. SV |
|--------------------|----------|------------------------|
| 1 Size 000/size 00 | 5 | 3071.000 |
| 2 Size 1 – 3 | 2 | 9344.510 ¹⁾ |

¹⁾ Plastic lug for attaching the micro-switch to the isolator chassis.



Mounting set

For mounting the NH on-load isolator, size 000, on 35 mm support rails to DIN EN 60 715 (7.5 mm/15 mm high).

| Packs of | Model No. SV |
|----------|--------------|
| 1 | 3432.000 |



Lug terminal connection parts

for NH fused isolators size 00

For connecting laminated copper bars and round conductors 1.5 to 25 mm².

Clamping area: 16 x 10 mm.

Tightening torque:

Terminal screw 4 Nm.

| | |
|----------|---------------------|
| Packs of | Model No. SV |
| 1 set | 3592.020 |



Clamp-type terminal connection

for NH fused isolators size 00

For the connection of round conductors 1.5 to 95 mm².

Tightening torque:

Terminal screw 4 Nm.

| | |
|----------|---------------------|
| Packs of | Model No. SV |
| 1 set | 3592.010 |



1



2

Prism terminals/box terminals

for NH isolators, sizes 00 to 3 with screw terminal

For direct connection of round and sector-shaped conductors and laminated copper bars.

| Design | For NH isolators | Clamping area for laminated copper bars | Connection | | Tightening torque | Packs of | Model No. SV |
|-------------------|------------------|---|--------------------------|---------------------------|-------------------|----------|-----------------|
| | | | Round conductors | Sector-shaped conductors | | | |
| 1 Prism terminals | Size 00 | – | 10 – 70 mm ² | 10 – 70 mm ² | 3 Nm | 3 | 9344.600 |
| 2 Box terminals | Size 1 | 20 x 14 mm | 35 – 150 mm ² | 50 – 150 mm ² | 12 Nm | 3 | 9344.610 |
| | Size 2/3 | 32 x 20 mm | 95 – 300 mm ² | 120 – 300 mm ² | 20 Nm | 3 | 9344.620 |



Arc chambers

for NH isolators, sizes 1 to 3

To increase switching capacity.

Technical specifications:

See table "NH isolators (utilisation category)", page 1246.

| | |
|----------|---------------------|
| Packs of | Model No. SV |
| 3 | 9344.680 |