

Instrument cases/system enclosures

Features



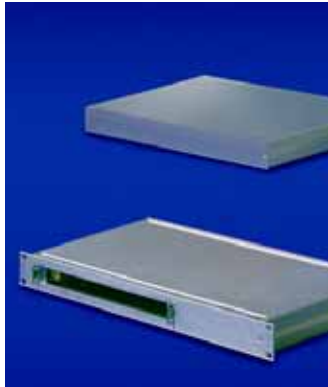
The RiCase instrument case impresses with its modern design and high functionality.

Particular features include the numerous colour variants and the all-metal enclosure construction.

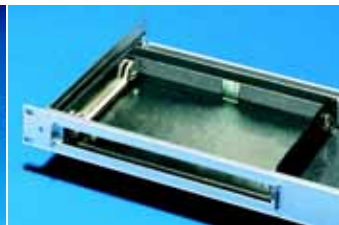
The Ripac Vario-Module system enclosure (desktop or rack-mounted enclosure) is fully compatible with the latest Ripac subrack range, making it ideal for individual configuration and assembly as a microcomputer system.

At just 1 U, the RiBox system enclosure offers a high packaging density in the smallest space.

RiBox



System enclosure for horizontal installation of individual boards, hubs, routers and modems.

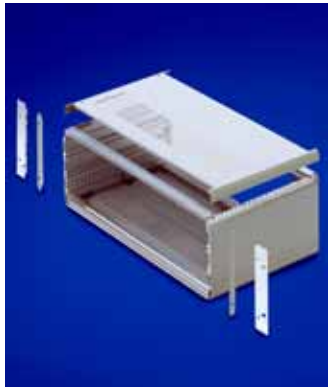


Mounting plate of sheet steel for individual population.

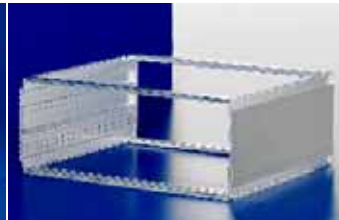


Mounting kit for horizontal installation of boards.

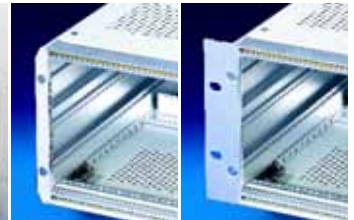
Ripac Vario-Module



System enclosure for direct installation of PCBs or board-type plug-in units.



Basic enclosure optionally for EMC or non-EMC applications and suitable for individual configuration, e. g. with cover plates.



Optionally with **corner trim** for configuration as an instrument case or with **482.6 mm (19") flanges** for configuration as a rack-mounted enclosure.

Rittal RiCase



All-metal instrument case for 482.6 mm (19") slide-in equipment
The perfect "safe" for valuable electronics. Extruded aluminium sections and die-cast elements form an extremely robust yet lightweight enclosure.



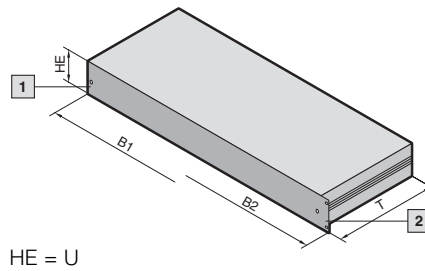
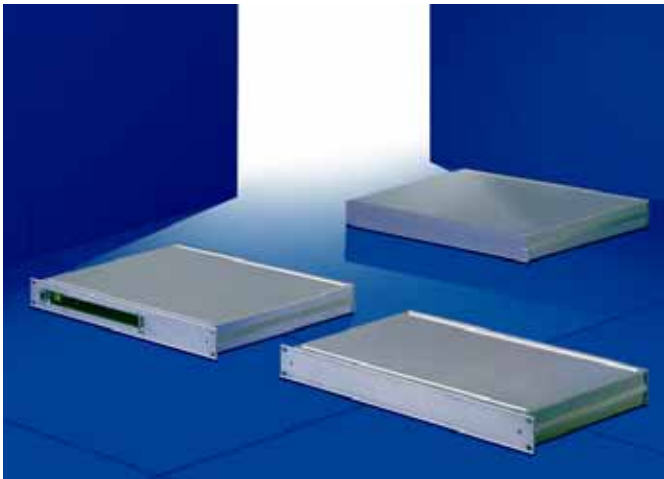
Stability and non-slip properties are guaranteed by 10 mm high corner caps. The distance from the desktop or from the lower enclosure offers excellent ventilation conditions.



Slide-in strips simply slide into the required profile channel, for the support of any required attachment.

Instrument cases/system enclosures

RiBox system enclosures 1 U



Technical specifications:

System enclosures 1 U, 150, 200, 250, 300, 350 mm deep
 Easy to assemble with just 4 screws.
 Optionally for use as an instrument case or 19" rack-mounted enclosure.
 Front panel to hold an overlay to conceal the screws.
 Maximum possible useful interior space.
 Optional EMC upgrades with additional EMC gaskets.
 Option of installing 1 VME or CPCI board horizontally.

Design:

System enclosure 1 U, to IEC 60 297-1.
 Optionally available for 19" rack-mounting in the enclosure or as an instrument case version.

- 1 Equipped as an instrument case
- 2 Equipped as a rack-mounted unit

Material/surface finish:

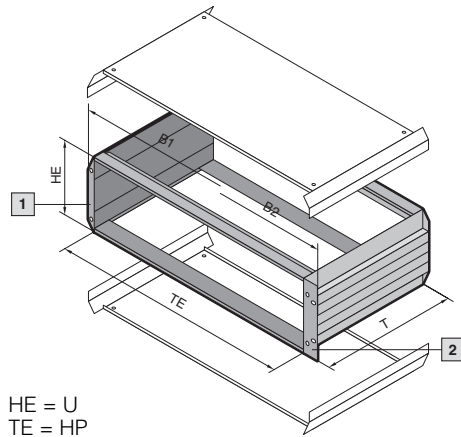
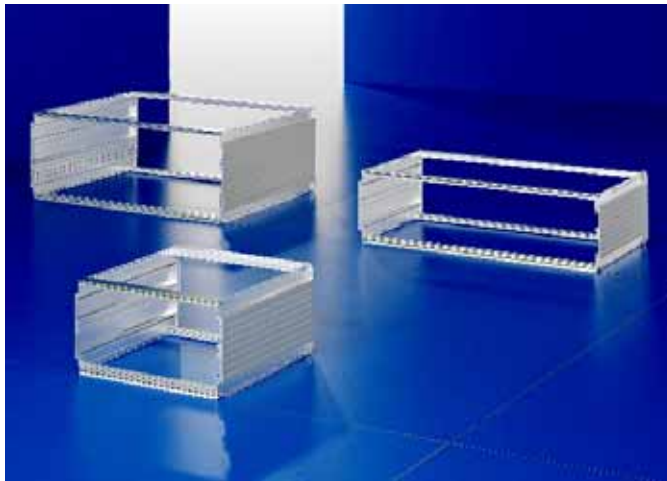
Side panels: Extruded aluminium section, untreated
 Base/cover trays: Aluminium, clear-chromated
 Front/rear panel: Extruded aluminium section, clear-chromated
 Mounting plate: Sheet steel

Detailed drawing, see page 1273.

U	1	1	1	1	1	-	-
Width (B1) mm	447	447	447	447	447	-	-
Width (B2) mm	19" (482.6)	19" (482.6)	19" (482.6)	19" (482.6)	19" (482.6)	19" (482.6)	19" (482.6)
Depth (T) mm	150	200	250	300	350	250	350
Model No. RP instrument case	3687.819	3687.820	3687.821	3687.822	3687.823	-	-
Model No. RP rack case	3687.814	3687.815	3687.816	3687.817	3687.818	-	-
Model No. RP rack-mount including mounting kit for double Euroboards	-	-	-	-	-	3684.072	3684.073
Supply includes							
Side panel	2	2	2	2	2	2	2
Front panel	1	1	1	1	1	1	1
Rear panel	1	1	1	1	1	1	1
Base/cover tray	2	2	2	2	2	2	2
Mounting kit	-	-	-	-	-	1	1
Accessories							
EMC set	3684.080	3684.080	3684.080	3684.080	3684.080	3684.080	3684.080
Mounting plate	3684.074	3684.075	3684.076	3684.077	3684.078	-	-

Instrument cases/system enclosures

Ripac Vario-Module 3 U, 4 U



Technical specifications:
May be used as a rack-mounted enclosure or instrument case.
External dimensions to IEC 60 297-1 for installation in 482.6 mm (19") racks.
Installation dimensions for board type plug-in assemblies to IEC 60 297-3-101.

Protection category:
IP 40 for non-vented version.

Supply includes:
2 side panels,
4 horizontal rails,
4 threaded inserts,
2 corner trims,
assembly parts.

Material/Surface finish:
Side panels:
Extruded aluminium section, spray finished in RAL 7035
Horizontal rails:
Extruded aluminium section, clear-chromated
Corner trims:
Die-cast zinc, spray-finished in RAL 7035
Side trims:
Extruded aluminium section, spray-finished in RAL 7035

1 Equipped as an instrument case

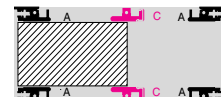
2 Equipped as a rack-mounted unit

Note:
Corner trims, mounting flanges and top and bottom covers must be ordered separately.

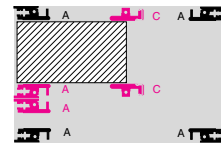
Horizontal rails for further configuration must be ordered separately, see page 558.

Detailed drawing,
see page 1274.

Horizontal rail configuration



3 U



4 U (3 + 1)

Ripac Vario-Module	Packs of	3 U							4 U (3 + 1)			Page
Installation width (TE)		42	42	63	63	84	84	84	84	84	84	
Width (B1) mm		235.6	235.6	342.3	342.3	449.0	449.0	449.0	449.0	449.0	449.0	
Width (B2) mm		251.6	251.6	358.3	358.3	465.1	465.1	465.1	465.1	465.1	465.1	
Depth (T) mm		250.4	310.4	250.4	310.4	250.4	310.4	370.4	250.4	310.4	370.4	
Model No. VM Basic enclosure	1	3982.040	3982.070	3982.050	3982.080	3982.060	3982.090	3982.100	3982.110	3982.120	3982.130	

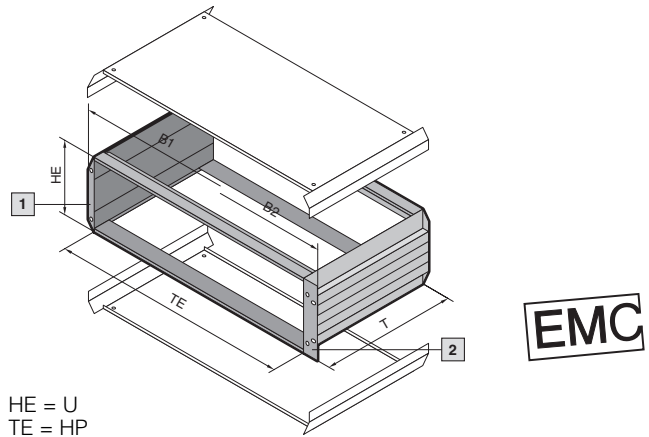
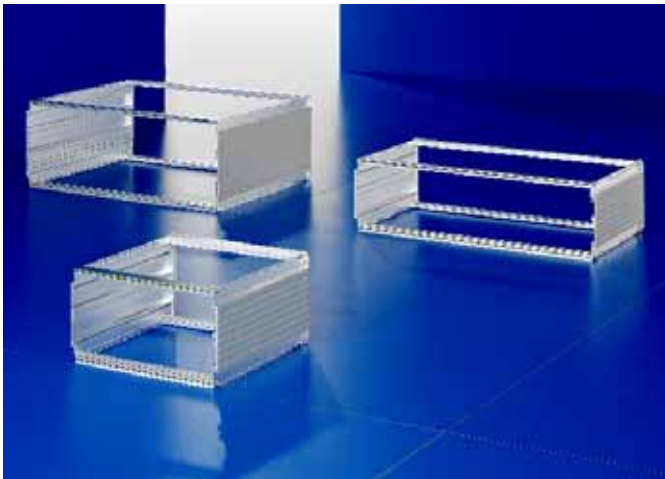
Also required												
Top covers												
- with vent holes	1	3982.941	3982.951	3982.942	3982.952	3982.940	3982.950	3982.960	3982.940	3982.950	3982.960	618
- without vent holes	1	3982.901	3982.911	3982.902	3982.912	3982.900	3982.910	3982.920	3982.900	3982.910	3982.920	618
Bottom covers												
- with vent holes	1	3982.741	3982.751	3982.742	3982.752	3982.740	3982.750	3982.760	3982.740	3982.750	3982.760	618
- without vent holes	1	3982.701	3982.711	3982.702	3982.712	3982.700	3982.710	3982.720	3982.700	3982.710	3982.720	618
Front corner trims for assembly as instrument case	2	3981.310	3981.310	3981.310	3981.310	3981.310	3981.310	3981.310	3981.320	3981.320	3981.320	619
Flanges for configuration as rack-mount												
- without handle holes	2	3981.210	3981.210	3981.210	3981.210	3981.210	3981.210	3981.210	3981.220	3981.220	3981.220	619
- with handle holes	2	3981.260	3981.260	3981.260	3981.260	3981.260	3981.260	3981.260	3981.270	3981.270	3981.270	619

Accessories												
Front/rear panels		see page 591 – 606										
Carrying handles	2	3981.350	3981.360	3981.350	3981.360	3981.350	3981.360	3981.370	3981.350	3981.360	3981.370	619
Front handles ¹⁾	2	3636.010	3636.010	3636.010	3636.010	3636.010	3636.010	3636.010	3636.010	3636.010	3636.010	562
Acrylic front door	1	3981.420	3981.420	3981.430	3981.430	3981.440	3981.440	3981.440	3981.450	3981.450	3981.450	620
Rear adjustable feet	4	3901.000	3901.000	3901.000	3901.000	3901.000	3901.000	3901.000	3901.000	3901.000	3901.000	620

¹⁾ Only in conjunction with mounting flanges with handle holes.

Instrument cases/system enclosures

Ripac Vario-Module 3 U, 4 U, EMC



Technical specifications:
May be used as a rack-mounted enclosure or instrument case.
External dimensions to IEC 60 297-1 for installation in 482.6 mm (19") racks.
Installation dimensions for board type plug-in assemblies to IEC 60 297-3-101.

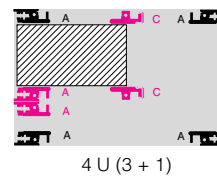
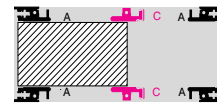
Material/Surface finish:
Side panels:
Extruded aluminium section, spray-finished in RAL 7035
Horizontal rails:
Extruded aluminium section, clear-chromated
Corner trims:
Die-cast zinc, spray-finished in RAL 7035

Side trims:
Extruded aluminium section, spray-finished in RAL 7035
Contact points: Conductive
Protection category:
IP 40 for non-vented version.

Supply includes:
2 side panels,
4 horizontal rails,
4 threaded inserts,
2 rear corner trims,
assembly parts.

- 1 Equipped as an instrument case
- 2 Equipped as a rack-mounted unit

Horizontal rail configuration



Note:
Corner trims, mounting flanges and top and bottom covers must be ordered separately.

Horizontal rails for further configuration must be ordered separately, see page 558.

Detailed drawing,
see page 1274.

Ripac Vario-Module	Packs of	3 U						4 U (3 + 1)			Page	
Installation width (TE)		42	42	63	63	84	84	84	84	84	84	
Width (B1) mm		235.6	235.6	342.3	342.3	449.0	449.0	449.0	449.0	449.0	449.0	
Width (B2) mm		251.6	251.6	358.3	358.3	465.1	465.1	465.1	465.1	465.1	465.1	
Depth (T) mm		250.4	310.4	250.4	310.4	250.4	310.4	370.4	250.4	310.4	370.4	
Model No. VM Basic enclosure EMC	1	3983.040	3983.070	3983.050	3983.080	3983.060	3983.090	3983.100	3983.110	3983.120	3983.130	

Also required												
EMC top covers												
- with vent holes	1	3981.941	3981.951	3981.942	3981.952	3981.940	3981.950	3981.960	3981.940	3981.950	3981.960	618
- without vent holes	1	3981.901	3981.911	3981.902	3981.912	3981.900	3981.910	3981.920	3981.900	3981.910	3981.920	618
EMC bottom covers												
- with vent holes	1	3981.741	3981.751	3981.742	3981.752	3981.740	3981.750	3981.760	3981.740	3981.750	3981.760	618
- without vent holes	1	3981.701	3981.711	3981.702	3981.712	3981.700	3981.710	3981.720	3981.700	3981.710	3981.720	618
Front corner trims for assembly as instrument case	2	3981.310	3981.310	3981.310	3981.310	3981.310	3981.310	3981.310	3981.320	3981.320	3981.320	619
Flanges for configuration as rack-mount												
- without handle holes	2	3981.210	3981.210	3981.210	3981.210	3981.210	3981.210	3981.210	3981.220	3981.220	3981.220	619
- with handle holes	2	3981.260	3981.260	3981.260	3981.260	3981.260	3981.260	3981.260	3981.270	3981.270	3981.270	619

EMC installation												
EMC gaskets, horizontal												
- for upper/lower horizontal rail	1	3684.808	3684.808	3684.808	3684.808	3684.808	3684.808	3684.808	3684.808	3684.808	3684.808	573
- between covers and horizontal rails	10	3684.245	3684.245	3684.245	3684.245	3684.245	3684.245	3684.245	3684.245	3684.245	3684.245	573
EMC gaskets, vertical	1	3686.975	3686.975	3686.975	3686.975	3686.975	3686.975	3686.975	3686.976	3686.976	3686.976	572
Front/rear panels EMC		see page 591 – 606										

Accessories												
Front/rear panels		see page 591 – 606										
Carrying handles	2	3981.350	3981.360	3981.350	3981.360	3981.350	3981.360	3981.370	3981.350	3981.360	3981.370	619
Front handles ¹⁾	2	3636.010	3636.010	3636.010	3636.010	3636.010	3636.010	3636.010	3636.010	3636.010	3636.010	562
Acrylic front door	1	3981.420	3981.420	3981.430	3981.430	3981.440	3981.440	3981.440	3981.450	3981.450	3981.450	620
Rear adjustable feet	4	3901.000	3901.000	3901.000	3901.000	3901.000	3901.000	3901.000	3901.000	3901.000	3901.000	620

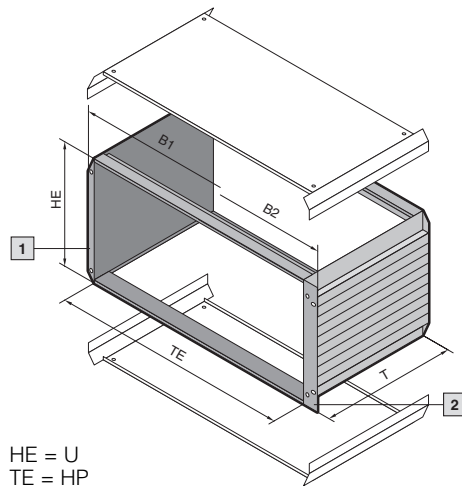
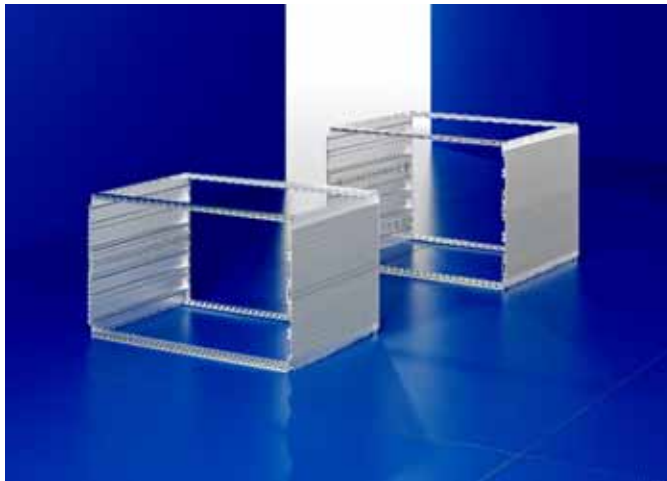
¹⁾ Only in conjunction with mounting flanges with handle holes.

Accessories Ripac Vario-Module Page 618 RiBox Page 613 RiCase Page 621

B 3.6 Instrument cases/system enclosures

Instrument cases/system enclosures

Ripac Vario-Module 6 U, 7 U



HE = U
TE = HP

Technical specifications:

May be used as a rack-mounted enclosure or instrument case. External dimensions to IEC 60 297-1 for installation in 482.6 mm (19") racks. Installation dimensions for board type plug-in assemblies to IEC 60 297-3-101.

Material/surface finish:

Side panels: Extruded aluminium section, spray-finished in RAL 7035
Horizontal rails: Extruded aluminium section, clear-chromated
Corner trims: Die-cast zinc, spray-finished in RAL 7035

Protection category:

IP 40 for non-vented version.

Supply includes:

2 side panels,
4 horizontal rails,
4 threaded inserts,
2 rear corner trims,
2 side trims centre,
assembly parts.

1 Equipped as an instrument case

2 Equipped as a rack-mounted unit

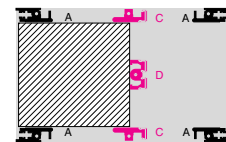
Horizontal rail configuration

Note:

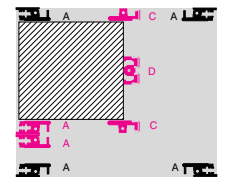
Corner trims, mounting flanges and top and bottom covers must be ordered separately.

Horizontal rails for further configuration must be ordered separately, see page 558.

Detailed drawing, see page 1274.



6 U



7 U (6 + 1)

Ripac Vario-Module	Packs of	6 U			7 U (6 + 1)		Page
Installation width (TE)		84	84	84	84	84	
Width (B1) mm		449.0	449.0	449.0	449.0	449.0	
Width (B2) mm		465.1	465.1	465.1	465.1	465.1	
Depth (T) mm		310.4	370.4	430.4	310.4	430.4	
Model No. VM Basic enclosure	1	3982.140	3982.150	3982.160	3982.170	3982.190	

Also required

Top covers							
– with vent holes	1	3982.950	3982.960	3982.970	3982.950	3982.970	618
– without vent holes	1	3982.910	3982.920	3982.930	3982.910	3982.930	618
Bottom covers							
– with vent holes	1	3982.750	3982.760	3982.770	3982.750	3982.770	618
– without vent holes	1	3982.710	3982.720	3982.730	3982.710	3982.730	618
Front corner trims for assembly as instrument case	2	3981.330	3981.330	3981.330	3981.340	3981.340	619
Flanges for configuration as rack-mount							
– without handle holes	2	3981.230	3981.230	3981.230	3981.240	3981.240	619
– with handle holes	2	3981.280	3981.280	3981.280	3981.290	3981.290	619

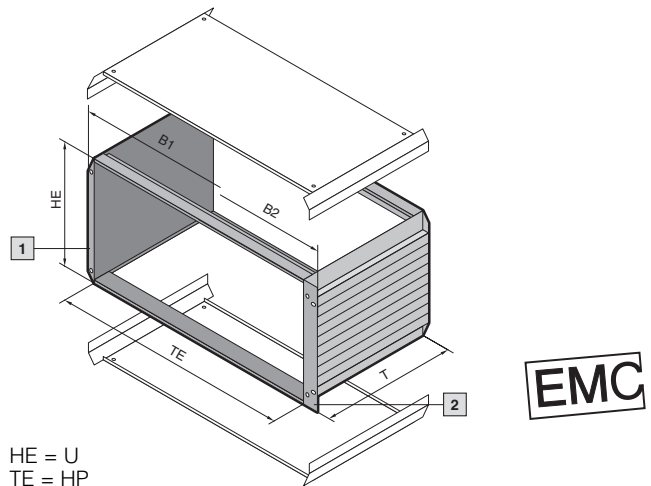
Accessories

Front/rear panel		see page 591 – 606					
Carrying handles	2	3981.360	3981.370	3981.380	3981.360	3981.370	619
Front handles ¹⁾	2	3666.010	3666.010	3666.010	3666.010	3666.010	562
Acrylic front door	1	3981.460	3981.460	3981.460	3981.470	3981.470	620
Rear adjustable feet	4	3901.000	3901.000	3901.000	3901.000	3901.000	620

¹⁾ Only in conjunction with mounting flanges with handle holes.

Instrument cases/system enclosures

Ripac Vario-Module 6 U, 7 U, EMC



HE = U
TE = HP

Technical specifications:

May be used as a rack-mounted enclosure or instrument case. External dimensions to IEC 60 297-1 for installation in 482.6 mm (19") racks. Installation dimensions for board type plug-in assemblies to IEC 60 297-3-101.

Material/surface finish:

Side panels: Extruded aluminium section, spray-finished in RAL 7035
Horizontal rails: Extruded aluminium section, clear-chromated
Corner trims: Die-cast zinc, spray-finished in RAL 7035
Contact points: Conductive

Protection category:

IP 40 for non-vented version.

Supply includes:

2 side panels,
4 horizontal rails,
4 threaded inserts,
2 rear corner trims,
2 side trims centre,
assembly parts.

1 Equipped as an instrument case

2 Equipped as a rack-mounted unit

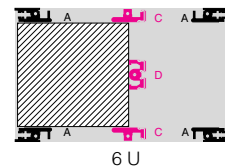
Horizontal rail configuration

Note:

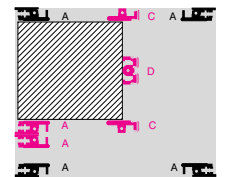
Corner trims, mounting flanges and top and bottom covers must be ordered separately.

Horizontal rails for further configuration must be ordered separately, see page 558.

Detailed drawing, see page 1274.



6 U



7 U (6 + 1)

Ripac Vario-Module	Packs of	6 U			7 U (6 + 1)		Page
Installation width (TE)		84	84	84	84	84	
Width (B1) mm		449.0	449.0	449.0	449.0	449.0	
Width (B2) mm		465.1	465.1	465.1	465.1	465.1	
Depth (T) mm		310.4	370.4	430.4	310.4	430.4	
Model No. VM Basic enclosure EMC	1	3983.140	3983.150	3983.160	3983.170	3983.190	

Also required							
EMC top covers							
– with vent holes	1	3981.950	3981.960	3981.970	3981.950	3981.970	618
– without vent holes	1	3981.910	3981.920	3981.930	3981.910	3981.930	618
EMC bottom covers							
– with vent holes	1	3981.750	3981.760	3981.770	3981.750	3981.770	618
– without vent holes	1	3981.710	3981.720	3981.730	3981.710	3981.730	618
Front corner trims for assembly as instrument case	2	3981.330	3981.330	3981.330	3981.340	3981.340	619
Flanges for configuration as rack-mount							
– without handle holes	2	3981.230	3981.230	3981.230	3981.240	3981.240	619
– with handle holes	2	3981.280	3981.280	3981.280	3981.290	3981.290	619

EMC installation							
EMC gaskets, horizontal							
– for upper/lower horizontal rail	1	3684.808	3684.808	3684.808	3684.808	3684.808	573
– between covers and horizontal rails	10	3684.245	3684.245	3684.245	3684.245	3684.245	
EMC gaskets, vertical	1	3686.977	3686.977	3686.977	3686.978	3686.978	572
Front/rear panels EMC		see page 591 – 606					

Accessories							
Front/rear panel		see page 591 – 606					
Carrying handles	2	3981.360	3981.370	3981.380	3981.360	3981.370	619
Front handles ¹⁾	2	3666.010	3666.010	3666.010	3666.010	3666.010	562
Acrylic front door	1	3981.460	3981.460	3981.460	3981.470	3981.470	620
Rear adjustable feet	4	3901.000	3901.000	3901.000	3901.000	3901.000	620

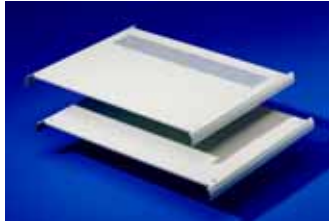
¹⁾ Only in conjunction with mounting flanges with handle holes.

Instrument cases/system enclosures

Ripac Vario-Module accessories

Enclosure population

For individual interior installation of the enclosures, system components from the Ripac range may be used (see page 563 – 571).



Top covers

for Ripac Vario-Module

Standard version

Material:
Sheet steel, spray-finished

Colour:
RAL 7035

EMC version

Material:
Sheet steel, spray-finished
Contact points: Conductive

HP	Depth mm	Model No. VM standard		Model No. VM EMC	
		with vent holes	without vent holes	with vent holes	without vent holes
42	250.4	3982.941	3982.901	3981.941	3981.901
	310.4	3982.951	3982.911	3981.951	3981.911
63	250.4	3982.942	3982.902	3981.942	3981.902
	310.4	3982.952	3982.912	3981.952	3981.912
84	250.4	3982.940	3982.900	3981.940	3981.900
	310.4	3982.950	3982.910	3981.950	3981.910
	370.4	3982.960	3982.920	3981.960	3981.920
	430.4	3982.970	3982.930	3981.970	3981.930



Bottom covers

for Ripac Vario-Module

Standard version

Material:
Sheet steel, spray-finished

Colour:
RAL 7035

EMC version

Material:
Sheet steel, spray-finished
Contact points: Conductive

HP	Depth mm	Model No. VM standard		Model No. VM EMC	
		with vent holes	without vent holes	with vent holes	without vent holes
42	250.4	3982.741	3982.701	3981.741	3981.701
	310.4	3982.751	3982.711	3981.751	3981.711
63	250.4	3982.742	3982.702	3981.742	3981.702
	310.4	3982.752	3982.712	3981.752	3981.712
84	250.4	3982.740	3982.700	3981.740	3981.700
	310.4	3982.750	3982.710	3981.750	3981.710
	370.4	3982.760	3982.720	3981.760	3981.720
	430.4	3982.770	3982.730	3981.770	3981.730



Feet

with fold-out support stand.
Load capacity up to 20 kg.

Material:
Plastic

Colour:
RAL 7035

Packs of	Model No. VM
2	3919.000



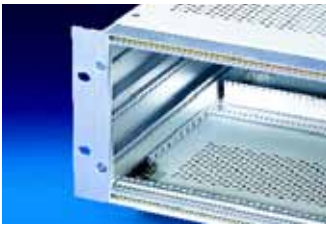
Mounting plate

For mounting heavy components.

Material:
Aluminium

Supply includes:
Assembly parts.

HP	Depth mm	Packs of	Model No. VM
42	250	1	3982.370
63	250	1	3982.380
84	250	1	3982.390



Front flanges

Required when the Ripac Vario-Module is to be used as a rack-mounted enclosure. The flanges have a channel to accommodate vertical EMC gaskets.

Material:
Aluminium, clear-chromated

U	Packs of	Model No. VM	
		without handle hole	with handle hole
3	2	3981.210	3981.260
4	2	3981.220	3981.270
6	2	3981.230	3981.280
7	2	3981.240	3981.290

+ Accessories:

Vertical EMC gasket, see page 572.
Front handles for mounting on front flanges, see page 562.



Front corner trims

Required when the Ripac Vario-Module is to be used as a desk-top instrument case. The corner trims have a channel to accommodate vertical EMC gaskets.

Material:
Aluminium, spray-finished

Colour:
RAL 7035

U	Packs of	Model No. VM
3	2	3981.310
4	2	3981.320
6	2	3981.330
7	2	3981.340

1, 2 and 8 U available on request.

+ Accessories:

Vertical EMC gasket, see page 572.
Front handles for mounting on front corner trim pieces, see page 619.



Front handles for mounting on front corner trims

Maximum load capacity: 500 N

Material:
Cover: ABS
Handle part: Aluminium, clear-anodised.

Supply includes:
2 handle parts, 4 covers, assembly parts.

U	Packs of	Model No. VM
3	2	3982.350
4	2	3982.360
6	2	3982.400
7	2	3982.410



Carrying handles

For ergonomic transportation, even with stacked enclosures.

May also be used as a support stand.

Max. load capacity: 350 N.

Material:
Die-cast zinc and extruded aluminium section

Colour:
RAL 7035

Note:
Only for use with front and rear trims.

For enclosure depth mm	Packs of	Model No. VM
250.4	2	3981.350
310.4	2	3981.360
370.4	2	3981.370
430.4	2	3981.380

Instrument cases/system enclosures

Ripac Vario-Module accessories



Rear feet

For mounting on the rear of the enclosure.
Dual function:

- Mechanical protection of the connection components.
- Also act as a cable tidy during transportation.

Material:
PA,
self-extinguishing to UL 94-V0

Colour:
RAL 7035

Packs of	Model No. VM
4	3901.000



Earthing set

For connecting the top and bottom covers to the side panels with PE conductors.

Supply includes:
Conductor cable green/yellow, 1.5 mm², with washer, flat-pin connector and assembly parts.

Packs of	Model No. RP
5	3900.000



Support stand/carrying handle

To fit Ripac Vario Module 3 U, 4 U and 6 U, adjustable on a 30° pitch pattern.

Material:
Extruded aluminium section/die-cast

Colour:
RAL 7035

Supply includes:
Assembly parts.

Note:
Corner trim for support stands/carrying handles should be ordered separately.

For Ripac Vario-Module	Packs of	Model No. VM
42 HP	1	3981.390
63 HP	1	3981.400
84 HP	1	3981.410

German patent no. 41 10 873

Corner trim for support stand	Packs of	Model No. VM
3 U	2	3981.310
4 U	2	3981.500
6 U	2	3981.510



Front doors of acrylic glazing, horizontally hinged

For protection of built-in control components.

Material:
Side parts: Aluminium, spray-finished in RAL 7035
Window: Smoked acrylic

Supply includes:
Assembly parts.

U	For Ripac Vario-Module	Packs of	Model No. VM
3	42 HP	1	3981.420
3	63 HP	1	3981.430
3	84 HP	1	3981.440
4	84 HP	1	3981.450
6	84 HP	1	3981.460
7	84 HP	1	3981.470

German patent no. 41 10 872

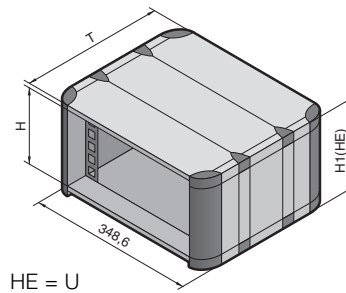


Front panels/rear panels

To cover the enclosures front and rear.
Also available as a hinged or EMC version.
Model No. see page 605.

Instrument cases/system enclosures

Rittal RiCase 269.2 mm (1/2 19")



HE = U

Technical specifications:

Depth:
300 mm, 420 mm, 540 mm
Installation width:
269.2 mm (1/2 19")
Installation options:
269.2 mm (1/2 19") slide-in
equipment to IEC 60 297-3

Material/surface finish:

Covers:
Extruded aluminium section/
die-cast, spray-finished
Side panels:
Extruded aluminium section,
spray-finished
Corner caps: Plastic
482.6 mm (19") mounting
brackets
Bracket:
Extruded aluminium section,
clear-chromated

Colour:

RAL 7035 (pale grey)

Decorative colours and corner caps:

RAL 5018 (turquoise)
RAL 5012 (pale blue)
RAL 7030 (stone grey)

Protection category:

IP 42 for unvented version.

Supply includes:

2 side panels,
2 covers,
8 corner caps,
8/12/16 cover caps
(300/420/540 mm depth),
4 482.6 mm (19") mounting
brackets,
4 threaded inserts,
2 plain inserts,
1 rear panel.

Special sizes and colours available on request.

Property rights:

German registered design
no. 96 09 457
IR reg. design no. DM/039 974
with validity for FR, IT
UK reg. design no. 2064682
US design patents
Des. 402,640 and Des. 423,464
Japan. reg. designs
no. 1045507 and 1045508

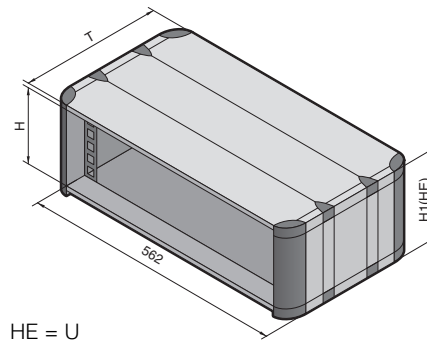
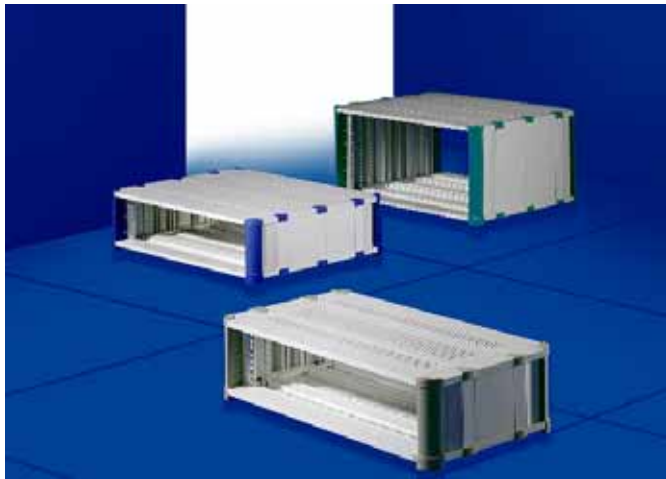
Detailed drawing,
see page 1275.

Enclosures for subrack width 269.2 mm (1/2 19")	Packs of	1 U		2 U		3 U			4 U		Page
Height (H) mm		77.5	77.5	121.9	121.9	166.4	166.4	166.4	210.8	210.8	
H1 (HE) mm		45.0	45.0	89.4	89.4	133.8	133.8	133.8	178.3	178.3	
Depth (T) mm		300.0	420.0	300.0	540.0	300.0	420.0	540.0	420.0	540.0	
Unvented											
Model No. RC, RAL 5018	1	3750.100	–	3750.200	–	3750.210	3750.300	–	3750.400	–	
Model No. RC, RAL 5012	1	3750.102	–	3750.202	–	3750.212	3750.302	–	3750.402	–	
Model No. RC, RAL 7030	1	3750.104	–	3750.204	–	3750.214	3750.304	–	3750.404	–	
Vented											
Model No. RC, RAL 5018	1	–	3750.110	–	3750.220	–	3750.350	3750.360	–	3750.450	
Model No. RC, RAL 5012	1	–	3750.112	–	3750.222	–	3750.352	3750.362	–	3750.452	
Model No. RC, RAL 7030	1	–	3750.114	–	3750.224	–	3750.354	3750.364	–	3750.454	
Weight (kg)	Vented/ unvented	3.3 3.4	4.2 4.4	3.7 3.8	5.4 6.1	4.1 4.2	5.2 5.4	6.1 6.8	5.8 6.0	6.8 7.5	

Accessories											
Carrying handles, horizontal	2	3751.250	3751.260	3751.250	3751.270	3751.250	3751.260	3751.270	3751.260	3751.270	624
	RAL 5018	3751.200	3751.200	3751.200	3751.200	3751.200	3751.200	3751.200	3751.200	3751.200	625
Support stand/ carrying handle	RAL 5012	3751.202	3751.202	3751.202	3751.202	3751.202	3751.202	3751.202	3751.202	3751.202	625
	RAL 7030	3751.204	3751.204	3751.204	3751.204	3751.204	3751.204	3751.204	3751.204	3751.204	625
Blanking plates (rear panel)	3	3746.000	3746.000	3747.000	3747.000	3748.000	3748.000	3748.000	3749.000	3749.000	1100
Front door, vertically hinged	1	–	–	–	–	3751.300	3751.300	3751.300	3751.310	3751.310	625
Slide rails	2	3751.500	3751.510	3751.500	3751.520	3751.500	3751.510	3751.520	3751.510	3751.520	624
Mounting angles 482.6 mm (19")	2	3751.650	3751.650	3751.660	3751.660	3751.670	3751.670	3751.670	3751.680	3751.680	623
Threaded inserts with M4 thread	8	3751.700	3751.700	3751.710	3751.710	3751.720	3751.720	3751.720	3751.730	3751.730	623
End section	2	–	–	–	–	3751.900	3751.900	3751.900	3751.910	3751.910	624

Instrument cases/system enclosures

Rittal RiCase 482.6 mm (19")



HE = U

Technical specifications:

Depth:
300 mm, 420 mm, 540 mm
Installation width:
482.6 mm (19")
Installation options:
482.6 mm (19") slide-in
equipment to IEC 60 297-3

Material/surface finish:

Covers:
Extruded aluminium section/
die-cast, spray-finished
Side panels:
Extruded aluminium section,
spray-finished
Corner caps: Plastic
482.6 mm (19") mounting
brackets,
2 threaded inserts,
2 plain inserts

Colour:

RAL 7035 (pale grey)

Decorative colours and corner caps:

RAL 5018 (turquoise)
RAL 5012 (pale blue)
RAL 7030 (stone grey)

Protection category:

IP 42 for unvented version.

Supply includes:

2 side panels,
2 covers,
8 corner caps,
8/12/16 cover caps
(300/420/540 mm depth),
2 482.6 mm (19") mounting
brackets,
2 threaded inserts,
2 plain inserts.

Note:

For rear installation, order back
panel/door separately.

Special sizes and colours available on request.

Detailed drawing,
see page 1275.

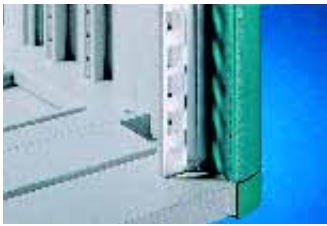
Enclosure for subrack width 482.6 mm (19")	Packs of	3 U		4 U		6 U			7 U		9 U		12 U	Page
Height (H) mm		166.4	166.4	210.8	210.8	299.7	299.7	299.7	344.2	344.2	433.1	433.1	566.5	
H1 (HE) mm		133.8	133.8	178.3	178.3	267.2	267.2	267.2	311.7	311.7	400.6	400.6	534.0	
Depth (T) mm		300.0	420.0	300.0	420.0	300.0	420.0	540.0	420.0	540.0	420.0	540.0	540.0	
Not vented														
Model No. RC, RAL 5018	1	3750.310	3750.320	3750.410	3750.420	3750.600	3750.610	3750.620	3750.700	3750.710	3750.900	3750.910	3750.000	
Model No. RC, RAL 5012	1	3750.312	3750.322	3750.412	3750.422	3750.602	3750.612	3750.622	3750.702	3750.712	3750.902	3750.912	3750.002	
Model No. RC, RAL 7030	1	3750.314	3750.324	3750.414	3750.424	3750.604	3750.614	3750.624	3750.704	3750.714	3750.904	3750.914	3750.004	
Vented														
Model No. RC, RAL 5018	1	3750.330	3750.340	3750.430	3750.440	3750.630	3750.640	3750.650	3750.720	3750.730	3750.920	3750.930	3750.030	
Model No. RC, RAL 5012	1	3750.332	3750.342	3750.432	3750.442	3750.632	3750.642	3750.652	3750.722	3750.732	3750.922	3750.932	3750.032	
Model No. RC, RAL 7030	1	3750.334	3750.344	3750.434	3750.444	3750.634	3750.644	3750.654	3750.724	3750.734	3750.924	3750.934	3750.034	
Weight (kg)	Vented/ unvented	5.3 5.4	6.9 7.1	5.7 7.2	7.5 7.7	6.5 6.6	8.5 8.7	10.8 12.2	9.1 9.3	11.5 12.9	10.1 10.3	12.9 14.3	15.0 16.4	

Accessories

Carrying handles, horizontal	2	3751.250	3751.260	3751.250	3751.260	3751.250	3751.260	3751.270	3751.260	3751.270	3751.260	3751.270	3751.270	624
Support stand/ carrying handle	RAL 5018	1	3751.210	3751.210	3751.210	3751.210	3751.210	3751.210	3751.210	3751.210	3751.210	3751.210	3751.210	625
	RAL 5012	1	3751.212	3751.212	3751.212	3751.212	3751.212	3751.212	3751.212	3751.212	3751.212	3751.212	3751.212	625
	RAL 7030	1	3751.214	3751.214	3751.214	3751.214	3751.214	3751.214	3751.214	3751.214	3751.214	3751.214	3751.214	625
Back panel, screw-fastened	1	3751.600	3751.600	3751.610	3751.610	3751.620	3751.620	3751.620	3751.630	3751.630	3751.530	3751.530	3751.540	627
Rear door, vertically hinged	1	3751.100	3751.100	3751.110	3751.110	3751.120	3751.120	3751.120	3751.130	3751.130	-	-	-	627
Rear door for fan installation	1	3751.150	3751.150	3751.160	3751.160	3751.170	3751.170	3751.170	3751.180	3751.180	-	-	-	627
Front door, vertically hinged	1	3751.320	3751.320	3751.330	3751.330	3751.340	3751.340	3751.340	3751.350	3751.350	-	-	-	625
Slide rails	2	3751.500	3751.510	3751.500	3751.510	3751.500	3751.510	3751.520	3751.510	3751.520	3751.510	3751.510	3751.520	624
Mounting angles 482.6 mm (19")	2	3751.670	3751.670	3751.680	3751.680	3751.690	3751.690	3751.690	3751.640	3751.640	3751.780	3751.780	3751.790	623
Threaded inserts with M4 thread	8	3751.720	3751.720	3751.730	3751.730	3751.740	3751.740	3751.740	3751.750	3751.750	3751.760	3751.760	3751.770	623
End section	2	3751.900	3751.900	3751.910	3751.910	3751.920	3751.920	3751.920	3751.930	3751.930	3751.820	3751.820	3751.830	624

Instrument cases/system enclosures

Rittal RiCase accessories



Mounting angles for 482.6 mm (19")

For front/rear installation of subracks and blanking plates.

Material:

Extruded aluminium section, clear-chromated

Supply includes:

Assembly parts.

Note:

1 pack of threaded inserts and 2 packs of mounting rails and spacers are required for depth-adjustable installation.

For enclosure height	Packs of	Model No. RC
1 U	2	3751.650
2 U	2	3751.660
3 U	2	3751.670
4 U	2	3751.680
6 U	2	3751.690
7 U	2	3751.640
9 U	2	3751.780
12 U	2	3751.790



Also required:

Threaded inserts, see page 623.

Mounting rails, see page 623.

Spacers, see page 623.



Threaded inserts

with M4 thread for RiCase

For the installation of mounting angles, slide rails, mounting kits, cable ducts etc. Simply slide into the channels in the side panels.

Material:

Extruded aluminium section, clear-chromated

For enclosure height	Packs of	Model No. RC
1 U	8	3751.700
2 U	8	3751.710
3 U	8	3751.720
4 U	8	3751.730
6 U	8	3751.740
7 U	8	3751.750
9 U	8	3751.760
12 U	8	3751.770



Mounting rails

- For depth-variable installation of mounting angles
- For the installation of component shelves, static or pull-out

Material:

Aluminium, clear-chromated

Supply includes:

Assembly parts.

A Version for depth-variable mounting angles

B Component shelf installation for 482.6 mm (19") (width 409 mm, also with telescopic slides)

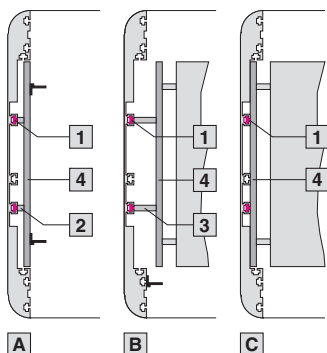
C Direct component shelf installation (width 471 mm)

1 Threaded inserts

2 Short spacers

3 Long spacers

4 Mounting rails



For enclosure depth mm	Packs of	Model No. RC
300	2	3751.400
420	2	3751.410
540	2	3751.420



Also required:

Threaded inserts, see page 623.

Spacers, see page 623.



Accessories:

Component shelf, see page 1017.

Component shelf, 482.6 mm (19"), see page 1013.



Spacers

For the attachment of mounting rails.

Design	Packs of	Model No. RC
Short for depth-variable mounting bracket	4	3751.450
Long for component shelf installation (width 409 mm)	4	3751.460

Instrument cases/system enclosures

Rittal RiCase accessories



Slide rails

To support heavy installed equipment.

Material:

1.5 mm sheet steel, passivated

Supply includes:

Assembly parts.

For enclosure depth mm	Packs of	Model No. RC
300	2	3751.500
420	2	3751.510
540	2	3751.520



Also required:

Threaded inserts, see page 623.



Earthing set

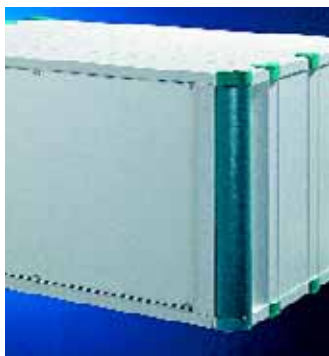
for RiCase

To meet electrical protective measures; fits all RiCase enclosures.

Supply includes:

Threaded insert, screw, green/yellow connection cable, serrated washer, nut.

Packs of	Model No. VC
4	3798.000



Rear trim

To cover the sides to the left and right of the subrack when no rear door or rear panel is used.

Material:

Extruded aluminium section, spray-finished

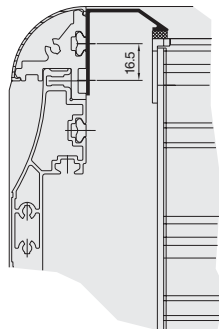
Colour:

RAL 7035

Supply includes:

Assembly parts.

For enclosure height	Packs of	Model No. RC
3 U	2	3751.900
4 U	2	3751.910
6 U	2	3751.920
7 U	2	3751.930
9 U	2	3751.820
12 U	2	3751.830



Carrying handles

horizontal

For easy, secure transportation.

- May be retrofitted
- Load capacity 30 kg/pair

Material:

Side parts: Die-cast, spray-finished
Centre part: Extruded aluminium section, spray-finished

Colour:

RAL 7035

Supply includes:

Assembly parts.

For enclosure depth mm	Packs of	Model No. RC
300	2	3751.250
420	2	3751.260
540	2	3751.270



1



2



3

Support stand/carrying handle

- Support stand/carrying handle adjustable in 30° increments
- Suitable for retrofitting to 2 – 7 U.
- For 269.2 mm (1½ 19") and 482.6 mm (19") wide enclosures
- Load capacity 30 kg

Material:

Hinged part: Die-cast, spray-finished
Centre part: Extruded aluminium section, spray-finished with plastic cover

Colour:

RAL 7035

Decorative colours:

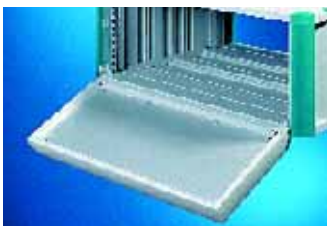
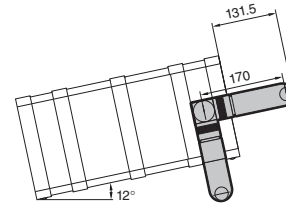
- 1 RAL 7030 (stone grey)
- 2 RAL 5018 (turquoise)
- 3 RAL 5012 (pale blue)

Supply includes:

Assembly parts.

For enclosure width mm	Decorative colour RAL	W mm	Model No. RC
269.2 (1½ 19")	5018	392	3751.200
269.2 (1½ 19")	5012	392	3751.202
269.2 (1½ 19")	7030	392	3751.204
482.6 (19")	5018	605	3751.210
482.6 (19")	5012	605	3751.212
482.6 (19")	7030	605	3751.214

W = Overall width of handle



Keyboard lid

Suitable for the installation of 482.6 mm (19") keyboards.

- Horizontally hinged with security lock
- Removable cover plate

Material:

Frame section: Extruded aluminium section/die-cast, spray-finished
Base and cover plate: Aluminium, spray-finished

Colour:

RAL 7035

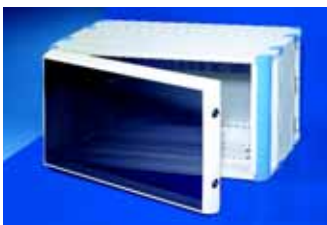
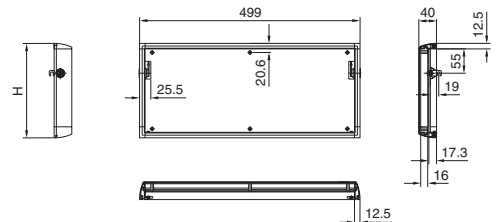
Supply includes:

Assembly parts.

For enclosure width mm	H (U)	Packs of	Model No. RC
482.6 (19")	4	1	3751.800
482.6 (19")	6	1	3751.810

Note:

Use only in conjunction with support stand/carrying handle.



Front door

vertically hinged

For mechanical protection of built-in control components.

- Optionally hinged on the right or left
- With security lock

Material:

Frame section: Extruded aluminium section, spray-finished
Corner pieces: Die-cast aluminium, spray-finished
Glazed pane: Smoked acrylic

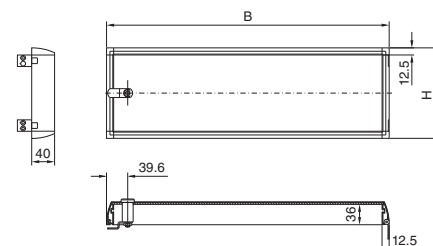
Colour:

RAL 7035

Supply includes:

Assembly parts.

For enclosure width mm	W (B) mm	H (U)	Model No. RC
269.2 (1½ 19")	289	3	3751.300
269.2 (1½ 19")	289	4	3751.310
482.6 (19")	503	3	3751.320
482.6 (19")	503	4	3751.330
482.6 (19")	503	6	3751.340
482.6 (19")	503	7	3751.350



Instrument cases/system enclosures

Rittal RiCase accessories



Aluminium front door

vertically hinged

For mechanical protection of built-in control components.

- Optionally hinged on the right or left
- With security lock

Material:

Frame section: Extruded aluminium section, spray-finished
 Corner pieces: Die-cast aluminium, spray-finished
 Aluminium plate

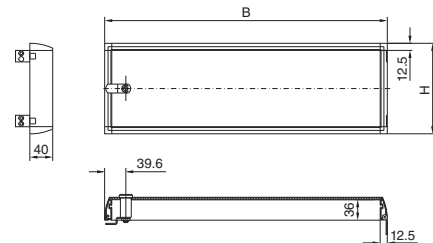
Colour:

RAL 7035

Supply includes:

Assembly parts.

For enclosure width mm	W (B) mm	H (U)	Model No. RC
482.6 (19")	503	3	3751.360
482.6 (19")	503	4	3751.370
482.6 (19")	503	6	3751.380



Front door

for tower enclosure

For mechanical protection of built-in control components.

- Optionally hinged on the right or left
- With security lock

Material:

Frame section: Extruded aluminium section, spray-finished
 Corner pieces: Die-cast aluminium, spray-finished
 Glazed pane: Smoked acrylic

Colour:

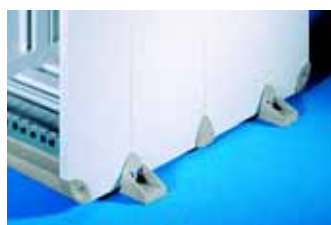
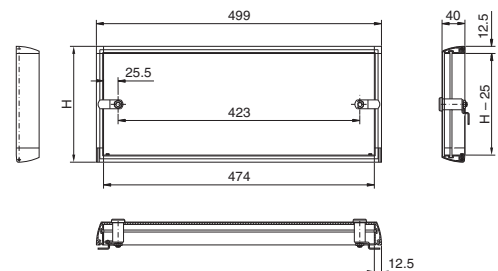
RAL 7035

Supply includes:

Assembly parts.

For enclosure width mm	W mm	H (U)	Model No. RC
482.6 (19")	503	3	3751.390
482.6 (19")	503	4	3751.430

W = Overall width of front door



Tower feet

For vertical siting of enclosures.
 May be retrofitted.

Material:

Plastic to UL 94-V0, self-extinguishing

Decorative colours:

- 1 RAL 7030 (stone grey)
- 2 RAL 5018 (turquoise)
- 3 RAL 5012 (pale blue)

Supply includes:

4 tower feet, assembly parts.

Decorative colour RAL	Packs of	Model No. RC
5018	1 set	3751.850
5012	1 set	3751.852
7030	1 set	3751.854

1



2



3

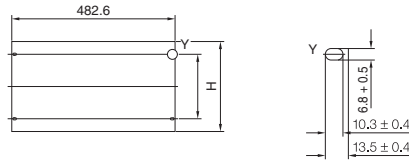


Back panel

screw-fastened
To close off the rear.

Material:
2/3 mm aluminium, natural-anodised

Supply includes:
Two 482.6 mm (19") mounting brackets, assembly parts.



For enclosure width mm	H (U)	Packs of	Model No. RC
482.6 (19")	3	1	3751.600
482.6 (19")	4	1	3751.610
482.6 (19")	6	1	3751.620
482.6 (19")	7	1	3751.630
482.6 (19")	9	1	3751.530
482.6 (19")	12	1	3751.540



Rear door

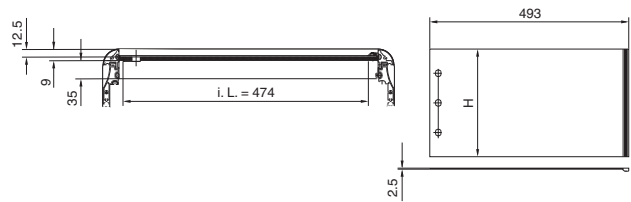
vertically hinged
To close off the rear.

- Hinged, with security lock
- Optionally hinged on the left or right

Material:
Aluminium, spray-finished

Colour:
RAL 7035

Supply includes:
Assembly parts.



For enclosure width mm	H (U)	Packs of	Model No. RC
482.6 (19")	3	1	3751.100
482.6 (19")	4	1	3751.110
482.6 (19")	6	1	3751.120
482.6 (19")	7	1	3751.130



Rear door

for fan installation
To close off the rear.

- With security lock
- Optionally hinged on the left or right
- For the installation of 120 mm fans

Material:
Aluminium, spray-finished

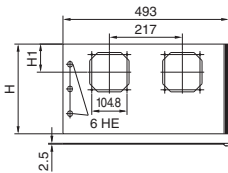
Colour:
RAL 7035

Supply includes:
Assembly parts.

For enclosure width mm	H (U)	H1 mm	Model No. RC
482.6 (19")	3	66.65	3751.150
482.6 (19")	4	88.90	3751.160
482.6 (19")	6	83.50	3751.170
482.6 (19")	7	83.50	3751.180

+ **Accessories:**

Fan expansion kit, see page 706.



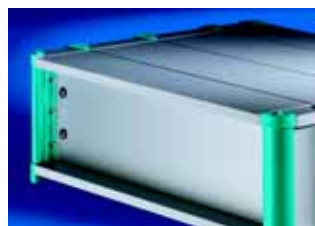
M6 assembly screws, see page 1105.
Captive nuts M6, see page 1105.



Fan expansion kit, see page 706.



Blanking plates, see page 1100.
Hinged blanking plates, see page 1100.



Ventilation front panels, see page 1100.