

# Rittal Ri4Power Form 2-4

## Systems in four dimensions

Rittal Ri4Power – the structured system solutions for rapid assembly and reliable operation of low-voltage switchgear.

Type-tested and also specially tested under accidental arcing conditions, using all standard commercially available switchgear.

Ri4Power Form 2-4 is the perfect solution for power distribution and controller applications in industrial plant, facility management, and many infrastructure installations.

### Convincing by safety – the advantages of the RiLine components

- Busbar system engineering with excellent characteristics: effective space utilisation and complete contact hazard protection.
- Insulated, base point-free busbar system.
- Reliable and fast.

### Perfect, simple and cost-reducing: High quality, fast assembly

- Solution advantages:  
The system accessories provide simple and perfect solutions to every conceivable practical requirement.
- Cost advantages:  
Standardised series modules are cost-effective and their well-conceived fast installation technology saves expensive time.



### High safety



Fully insulated busbar system with finger-safe contact hazard protection.



Preventive avoidance of accidental arcing, thanks to fully insulated busbar systems.

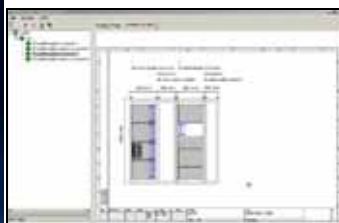
### ASTA certified



Type-tested and specially tested under accidental arcing conditions in internationally recognised test laboratories. For further tests, please see [www.rittal.com](http://www.rittal.com).



### Easy to use software



Rittal Power Engineering software for planning, preparation of tenders and plant execution.



Rittal Ri4Power Form 2-4 provides plant-specific solutions.



As well as enabling you to optimise your assembly, the tested component adaptors and busbar system also saves valuable installation time.



### Time-saving system assembly



Time-saving system installation, divided internal construction, innovative module components, comprehensive accessories.



One-person assembly – Locate components into the TS 8 pitch, and release. Both hands are now ready for the next installation step.



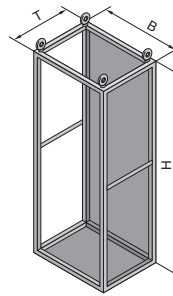
Mini-TS profile – the TS pitch in the smallest dimension. For the creation of auxiliary constructions on the TS 8 system pitch pattern.

B  
2.10

Rittal Ri4Power Form 2-4

# Rittal Ri4Power Form 2-4

## SV-TS 8 modular enclosures (width: 400, 600)



Enclosure frame for installation with partial doors and the internal separation.

**Material:**

Sheet steel  
Enclosure frame, rear panel and gland plates: 1.5 mm

**Surface finish:**

Enclosure frame: Dipcoat-primed  
Rear panel: Dipcoat-primed, powder-coated in textured RAL 7035 on the outside  
Gland plates: Zinc-plated

**Protection category:**

Up to IP 54, depending on the roof plate, front trim panels and side panel.

**Supply includes:**

Enclosure frame with rear panel and gland plates.



**Accessories:**

Enclosure accessories, see page 890.

**Inspection:**

Type-tested to IEC 60 439-1. For more tests and approvals, see www.rittal.com

**Detailed drawings,**

see page 1262.

**Technical information,**

see page 1263.

| Width (B) mm        | Packs of | 400             | 600             | 400             | 600             | 400             | 600             | Page |
|---------------------|----------|-----------------|-----------------|-----------------|-----------------|-----------------|-----------------|------|
| Height (H) mm       |          | 1800            | 1800            | 2000            | 2000            | 2200            | 2200            |      |
| Depth (T) mm        |          | 600             | 600             | 600             | 600             | 600             | 600             |      |
| <b>Model No. SV</b> | <b>1</b> | <b>9670.486</b> | <b>9670.686</b> | <b>9670.406</b> | <b>9670.606</b> | <b>9670.426</b> | <b>9670.626</b> |      |
| Weight (kg)         |          | 45.0            | 49.0            | 47.0            | 51.0            | 49.0            | 53.0            |      |

| <b>Base/plinth</b>        |               |       |          |          |          |          |          |          |     |
|---------------------------|---------------|-------|----------|----------|----------|----------|----------|----------|-----|
| Components front and rear | Height 100 mm | 1 set | 8601.400 | 8601.600 | 8601.400 | 8601.600 | 8601.400 | 8601.600 | 893 |
|                           | Height 200 mm | 1 set | 8602.400 | 8602.600 | 8602.400 | 8602.600 | 8602.400 | 8602.600 | 893 |
| Trim panels (sides)       | Height 100 mm | 1 set | 8601.060 | 8601.060 | 8601.060 | 8601.060 | 8601.060 | 8601.060 | 893 |
|                           | Height 200 mm | 1 set | 8602.060 | 8602.060 | 8602.060 | 8602.060 | 8602.060 | 8602.060 | 893 |

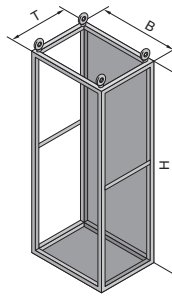
| <b>Also required</b>                      |                           |                      |          |          |          |          |          |          |     |
|---|---------------------------|----------------------|----------|----------|----------|----------|----------|----------|-----|
| Side panels for protection category       | IP 55                     | 2                    | 8186.235 | 8186.235 | 8106.235 | 8106.235 | 8126.235 | 8126.235 | 477 |
|   | IP 2X                     | 2                    | 9671.986 | 9671.986 | 9671.906 | 9671.906 | 9671.926 | 9671.926 | 477 |
| Upgrade kit for side panels IP 2X         | IP 43                     | 2 sets <sup>1)</sup> | 9671.996 | 9671.996 | 9671.996 | 9671.996 | 9671.996 | 9671.996 | 477 |
|   | IP 55                     | 1                    | 9671.646 | 9671.666 | 9671.646 | 9671.666 | 9671.646 | 9671.666 | 477 |
| Roof plates for protection category       | IP 43                     | 1                    | 9671.746 | 9671.766 | 9671.746 | 9671.766 | 9671.746 | 9671.766 | 477 |
|   | IP 2X                     | 1                    | –        | 9660.235 | –        | 9660.235 | –        | 9660.235 | 477 |
| Roof plates for cable entry gland         |                           | 1                    | 9671.546 | 9665.903 | 9671.546 | 9665.903 | 9671.546 | 9665.903 | 477 |
| Front trim panels for protection category | IP 54                     | 1 set                | 9671.014 | 9671.016 | 9671.014 | 9671.016 | 9671.014 | 9671.016 | 477 |
|   | IP 2X                     | 1 set                | 9671.034 | 9671.036 | 9671.034 | 9671.036 | 9671.034 | 9671.036 | 477 |
| Upgrade kit for front panels IP 2X        | IP 43                     | 1 set                | 9671.044 | 9671.046 | 9671.044 | 9671.046 | 9671.044 | 9671.046 | 477 |
| Partial doors                             | for clearance height      | 1                    | 9671.156 | 9671.176 | 9671.158 | 9671.178 | 9671.150 | 9671.170 | 476 |
|   | for modular configuration |                      | ■        | ■        | ■        | ■        | ■        | ■        | 476 |
| Angular baying brackets                   |                           | 4                    |          |          | 8800.430 |          |          |          | 930 |
| Baying connectors, external               |                           | 6                    |          |          | 8800.490 |          |          |          | 929 |

| <b>Accessories</b>    |  |  |  |  |  |  |  |  |           |
|-----------------------|--|--|--|--|--|--|--|--|-----------|
| External installation |  |  |  |  |  |  |  |  | 476 – 478 |
| Interior installation |  |  |  |  |  |  |  |  | 479 – 483 |

<sup>1)</sup> Pack sufficient for 1 pack of side panels.

# Rittal Ri4Power Form 2-4

## SV-TS 8 modular enclosures (width: 800)



Modular enclosure frame for installation with partial doors and internal separation.

**Material:**

Sheet steel  
Enclosure frame, rear panel and gland plates: 1.5 mm

**Surface finish:**

Enclosure frame: Dipcoat-primed  
Rear panel: Dipcoat-primed, powder-coated in textured RAL 7035 on the outside  
Gland plates: Zinc-plated

**Protection category:**

Up to IP 54, depending on the roof plate, front trim panels and side panel.

**Supply includes:**

Enclosure frame with rear panel and gland plates.



**Accessories:**

Enclosure accessories, see page 890.

**Inspection:**

Type-tested to IEC 60 439-1. For more tests and approvals, see www.rittal.com

**Detailed drawings,** see page 1262.

**Technical information,** see page 1263.

| Width (B) mm        | Packs of | 800             | 800             | 800             | Page |
|---------------------|----------|-----------------|-----------------|-----------------|------|
| Height (H) mm       |          | 1800            | 2000            | 2200            |      |
| Depth (T) mm        |          | 600             | 600             | 600             |      |
| <b>Model No. SV</b> | 1        | <b>9670.886</b> | <b>9670.806</b> | <b>9670.826</b> |      |
| Weight (kg)         |          | 58.5            | 61.0            | 64.0            |      |

| Base/plinth               |               |       |          |          |          |     |
|---------------------------|---------------|-------|----------|----------|----------|-----|
| Components front and rear | Height 100 mm | 1 set | 8601.800 | 8601.800 | 8601.800 | 893 |
|                           | Height 200 mm | 1 set | 8602.800 | 8602.800 | 8602.800 | 893 |
| Trim panels (sides)       | Height 100 mm | 1 set | 8601.060 | 8601.060 | 8601.060 | 893 |
|                           | Height 200 mm | 1 set | 8602.060 | 8602.060 | 8602.060 | 893 |

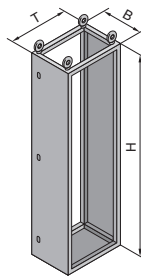
| Also required                             |                           |                      |          |          |          |     |
|---|---------------------------|----------------------|----------|----------|----------|-----|
| Side panels for protection category       | IP 55                     | 2                    | 8186.235 | 8106.235 | 8126.235 | 477 |
|   | IP 2X                     | 2                    | 9671.986 | 9671.906 | 9671.926 | 477 |
| Upgrade kit for side panels IP 2X         | IP 43                     | 2 sets <sup>1)</sup> | 9671.996 | 9671.996 | 9671.996 | 477 |
|   | IP 55                     | 1                    | 9671.686 | 9671.686 | 9671.686 | 477 |
| Roof plates for protection category       | IP 43                     | 1                    | 9671.786 | 9671.786 | 9671.786 | 477 |
|   | IP 2X                     | 1                    | 9660.245 | 9660.245 | 9660.245 | 477 |
| Roof plates for cable entry gland         |                           | 1                    | 9671.586 | 9671.586 | 9671.586 | 477 |
| Front trim panels for protection category | IP 54                     | 1 set                | 9671.018 | 9671.018 | 9671.018 | 477 |
|   | IP 2X                     | 1 set                | 9671.038 | 9671.038 | 9671.038 | 477 |
| Upgrade kit for front panels IP 2X        | IP 43                     | 1 set                | 9671.048 | 9671.048 | 9671.048 | 477 |
| Partial doors                             | for clearance height      | 1                    | 9671.196 | 9671.198 | 9671.190 | 476 |
|   | for modular configuration |                      | ■        | ■        | ■        | 476 |
| Angular baying brackets                   |                           | 4                    |          | 8800.430 |          | 930 |
| Baying connectors, external               |                           | 6                    |          | 8800.490 |          | 929 |

| Accessories           |  |  |  |  |  |           |
|-----------------------|--|--|--|--|--|-----------|
| External installation |  |  |  |  |  | 476 – 478 |
| Interior installation |  |  |  |  |  | 479 – 483 |

<sup>1)</sup> Pack sufficient for 1 pack of side panels.

# Rittal Ri4Power Form 2-4

## SV-TS 8 cable chamber enclosures (width: 300, 400)



Enclosure frame for the management of incoming and outgoing cables. The use of a roof plate with cable gland plates allows cables to be fed from above.

**Material:**

Sheet steel  
Enclosure frame, rear panel and gland plates: 1.5 mm  
Door: 2.0 mm

**Surface finish:**

Enclosure frame: Dipcoat-primed  
Door and rear panel: Dipcoat-primed, powder-coated in textured RAL 7035 on the outside  
Gland plates: Zinc-plated

**Protection category:**

Up to IP 54, depending on the roof plate and the side panel.

**Supply includes:**

Enclosure frame with door, rear panel and gland plates.

**Accessories:**

Enclosure accessories, see page 890.

**Inspection:**

Type-tested to IEC 60 439-1. For more tests and approvals, see www.rittal.com

**Detailed drawings,**

see page 1262.

**Technical information,**

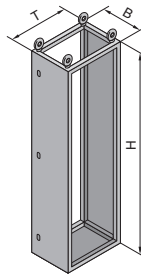
see page 1263.

| Width (B) mm   | Packs of      | 300                  | 400             | 300             | 400             | 300             | 400             | 300      | 400       | Page |
|--|---------------|----------------------|-----------------|-----------------|-----------------|-----------------|-----------------|----------|-----------|------|
| Height (H) mm  |               | 1800                 | 1800            | 2000            | 2000            | 2200            | 2200            |          |           |      |
| Depth (T) mm   |               | 600                  | 600             | 600             | 600             | 600             | 600             |          |           |      |
| <b>Model No. SV</b>  | <b>1</b>      | <b>9670.396</b>      | <b>9670.496</b> | <b>9670.316</b> | <b>9670.416</b> | <b>9670.336</b> | <b>9670.436</b> |          |           |      |
| Weight (kg)  |               | 48.5                 | 52.0            | 51.5            | 54.0            | 54.0            | 56.5            |          |           |      |
| <b>Base/plinth</b>   |               |                      |                 |                 |                 |                 |                 |          |           |      |
| Components front and rear  | Height 100 mm | 1 set                | 8601.915        | 8601.400        | 8601.915        | 8601.400        | 8601.915        | 8601.400 | 893       |      |
|  | Height 200 mm | 1 set                | 8602.915        | 8602.400        | 8602.915        | 8602.400        | 8602.915        | 8602.400 | 893       |      |
| Trim panels (sides)  | Height 100 mm | 1 set                | 8601.060        | 8601.060        | 8601.060        | 8601.060        | 8601.060        | 8601.060 | 893       |      |
|  | Height 200 mm | 1 set                | 8602.060        | 8602.060        | 8602.060        | 8602.060        | 8602.060        | 8602.060 | 893       |      |
| <b>Also required</b>   |               |                      |                 |                 |                 |                 |                 |          |           |      |
| Side panels for protection category  | IP 55         | 2                    | 8186.235        | 8186.235        | 8106.235        | 8106.235        | 8126.235        | 8126.235 | 477       |      |
|  | IP 2X         | 2                    | 9671.986        | 9671.986        | 9671.906        | 9671.906        | 9671.926        | 9671.926 | 477       |      |
| Upgrade kit for side panels IP 2X  | IP 43         | 2 sets <sup>1)</sup> | 9671.996        | 9671.996        | 9671.996        | 9671.996        | 9671.996        | 9671.996 | 477       |      |
|  | IP 55         | 1                    | 9671.636        | 9671.646        | 9671.636        | 9671.646        | 9671.636        | 9671.646 | 477       |      |
| Roof plates for protection category  | IP 55         | 1                    | 9671.736        | 9671.746        | 9671.736        | 9671.746        | 9671.736        | 9671.746 | 477       |      |
|  | IP 43         | 1                    | 9671.536        | 9671.546        | 9671.536        | 9671.546        | 9671.536        | 9671.546 | 477       |      |
| Roof plates for cable entry gland  |               | 1                    | 9671.536        | 9671.546        | 9671.536        | 9671.546        | 9671.536        | 9671.546 | 477       |      |
| Angular baying brackets  |               | 4                    | 8800.430        |                 |                 |                 |                 |          | 930       |      |
| Baying connectors, external  |               | 6                    | 8800.490        |                 |                 |                 |                 |          | 929       |      |
| <b>Accessories</b>   |               |                      |                 |                 |                 |                 |                 |          |           |      |
| External installation  |               |                      |                 |                 |                 |                 |                 |          | 476 – 478 |      |
| Interior installation  |               |                      |                 |                 |                 |                 |                 |          | 479 – 483 |      |
| <b>Lock systems</b>  |               |                      |                 |                 |                 |                 |                 |          |           |      |
| Standard double-bit lock may be exchanged for a lock with security cylinder/T handles, see page 955. |               |                      |                 |                 |                 |                 |                 |          |           |      |

<sup>1)</sup> Pack sufficient for 1 pack of side panels.

# Rittal Ri4Power Form 2-4

## SV-TS 8 cable chamber enclosures (width: 600)



Enclosure frame for the management of incoming and outgoing cables. The use of a roof plate with cable gland plates allows cables to be fed from above.

**Material:**

Sheet steel  
Enclosure frame, rear panel and gland plates: 1.5 mm  
Door: 2.0 mm

**Surface finish:**

Enclosure frame:  
Dipcoat-primed  
Door and rear panel:  
Dipcoat-primed, powder-coated in textured RAL 7035 on the outside  
Gland plates: Zinc-plated

**Protection category:**

Up to IP 54, depending on the roof plate and the side panel.

**Supply includes:**

Enclosure frame with door, rear panel and gland plates.



**Accessories:**

Enclosure accessories, see page 890.

**Inspection:**

Type-tested to IEC 60 439-1. For more tests and approvals, see [www.rittal.com](http://www.rittal.com)

**Detailed drawings,** see page 1262.

**Technical information,** see page 1263.

| Width (B) mm        | Packs of | 600             | 600             | 600             | Page |
|---------------------|----------|-----------------|-----------------|-----------------|------|
| Height (H) mm       |          | 1800            | 2000            | 2200            |      |
| Depth (T) mm        |          | 600             | 600             | 600             |      |
| <b>Model No. SV</b> | 1        | <b>9670.696</b> | <b>9670.616</b> | <b>9670.636</b> |      |
| Weight (kg)         |          | 56.0            | 59.0            | 61.0            |      |

| Base/plinth               |               |       |          |          |          |     |
|---------------------------|---------------|-------|----------|----------|----------|-----|
| Components front and rear | Height 100 mm | 1 set | 8601.600 | 8601.600 | 8601.600 | 893 |
|                           | Height 200 mm | 1 set | 8602.600 | 8602.600 | 8602.600 | 893 |
| Trim panels (sides)       | Height 100 mm | 1 set | 8601.060 | 8601.060 | 8601.060 | 893 |
|                           | Height 200 mm | 1 set | 8602.060 | 8602.060 | 8602.060 | 893 |

| Also required                       |       |                     |          |          |          |     |
|-------------------------------------|-------|---------------------|----------|----------|----------|-----|
| Side panels for protection category | IP 55 | 2                   | 8186.235 | 8106.235 | 8126.235 | 477 |
|                                     | IP 2X | 2                   | 9671.986 | 9671.906 | 9671.926 | 477 |
| Upgrade kit for side panels IP 2X   | IP 43 | 1 set <sup>1)</sup> | 9671.996 | 9671.996 | 9671.996 | 477 |
|                                     | IP 55 | 1                   | 9671.666 | 9671.666 | 9671.666 | 477 |
| Roof plates for protection category | IP 43 | 1                   | 9671.766 | 9671.766 | 9671.766 | 477 |
|                                     | IP 2X | 1                   | 9660.235 | 9660.235 | 9660.235 | 477 |
| Roof plates for cable entry gland   |       | 1                   | 9665.903 | 9665.903 | 9665.903 | 477 |
| Angular baying brackets             |       | 4                   |          | 8800.430 |          | 930 |
| Baying connectors, external         |       | 6                   |          | 8800.490 |          | 929 |

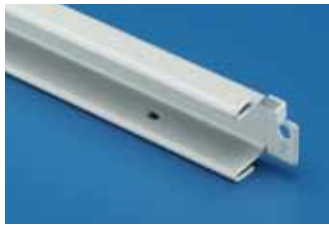
| Accessories           |  |  |  |  |  |           |
|-----------------------|--|--|--|--|--|-----------|
| External installation |  |  |  |  |  | 476 – 478 |
| Interior installation |  |  |  |  |  | 479 – 483 |

| Lock systems   |  |  |  |  |  |  |
|--|--|--|--|--|--|--|
| Standard double-bit lock may be exchanged for a lock with security cylinder/T handles, see page 955. |  |  |  |  |  |  |

<sup>1)</sup> Pack sufficient for 1 pack of side panels.

# Rittal Ri4Power Form 2-4

## Accessories for external mounting



### Cross members

#### for TS

For use as sealing member between:

- Front trim panels
- Trim panels
- Partial doors

#### Material:

Sheet steel, 1 mm

#### Colour:

RAL 7035

#### Supply includes:

Assembly parts and sealing material.

| For enclosure width mm | Packs of | Model No. SV    |
|------------------------|----------|-----------------|
| 300                    | 5        | <b>9671.003</b> |
| 400                    | 5        | <b>9671.004</b> |
| 600                    | 5        | <b>9671.006</b> |
| 800                    | 5        | <b>9671.008</b> |



### Partial doors

#### For TS, without lock

Door hinges with non-drilled internal fastening. Door can be optionally hinged on the right or left side.

#### Material:

Sheet steel, 2 mm

#### Surface finish:

Textured RAL 7035

#### Supply includes:

Hinges and assembly parts.



#### Also required:

Locks, see below.  
Cross members, see above.



| Height mm | Number of required locks | Packs of | Model No. SV        |                 |                 |
|-----------|--------------------------|----------|---------------------|-----------------|-----------------|
|           |                          |          | For enclosure width |                 |                 |
|           |                          |          | 400 mm              | 600 mm          | 800 mm          |
| 150       | 1                        | 1        | <b>9671.141</b>     | <b>9671.161</b> | <b>9671.181</b> |
| 200       | 1                        | 1        | <b>9671.142</b>     | <b>9671.162</b> | <b>9671.182</b> |
| 250       | 1                        | 1        | <b>9671.147</b>     | <b>9671.167</b> | <b>9671.187</b> |
| 300       | 1                        | 1        | <b>9671.143</b>     | <b>9671.163</b> | <b>9671.183</b> |
| 400       | 1                        | 1        | <b>9671.144</b>     | <b>9671.164</b> | <b>9671.184</b> |
| 600       | 2                        | 1        | <b>9671.146</b>     | <b>9671.166</b> | <b>9671.186</b> |
| 800       | 2                        | 1        | <b>9671.148</b>     | <b>9671.168</b> | <b>9671.188</b> |
| 1000      | 3                        | 1        | <b>9671.140</b>     | <b>9671.160</b> | <b>9671.180</b> |
| 1600      | 3                        | 1        | <b>9671.156</b>     | <b>9671.176</b> | <b>9671.196</b> |
| 1800      | 3                        | 1        | <b>9671.158</b>     | <b>9671.178</b> | <b>9671.198</b> |
| 2000      | 3                        | 1        | <b>9671.150</b>     | <b>9671.170</b> | <b>9671.190</b> |



### Locks

For the installation in partial doors or for replacement with AE cam locks.

#### Material:

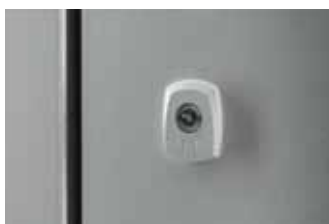
Housing made of fibreglass-reinforced plastic, bolt made of PA

#### Supply includes:

Housing, lock insert, bolt including assembly parts.

| Design   | Packs of | Model No. SV    |
|--|----------|-----------------|
| With double-bit insert                         | 1        | <b>9671.130</b> |
| With cylinder insert, lock no. 3524 E          | 1        | <b>9671.132</b> |
| With T handle                                  | 1        | <b>9671.134</b> |
| With T handle and lock insert, lock no. 3524 E | 1        | <b>9671.135</b> |
| Fastener lug with end stop <sup>1)</sup>       | 2        | <b>9671.138</b> |

<sup>1)</sup> Must be used if the twist lock cannot be locked on the TS 8 frame.





### Front trim panels

#### for TS

Required as upper and lower height filler when partial doors are used.  
Height: 100 mm.

#### Material:

Sheet steel, 2 mm

#### Surface finish:

Textured RAL 7035

#### Supply includes:

Two trim panels including assembly parts.



#### Also required:

Cross members, see page 476.



| Design                                       | Packs of | Model No. SV        |                 |                 |
|--|----------|---------------------|-----------------|-----------------|
|  |          | For enclosure width |                 |                 |
|  |          | 400 mm              | 600 mm          | 800 mm          |
| IP 54 sealed                                 | 1 set    | <b>9671.014</b>     | <b>9671.016</b> | <b>9671.018</b> |
| IP 2X with ventilation hole                  | 1 set    | <b>9671.034</b>     | <b>9671.036</b> | <b>9671.038</b> |
| <b>Accessories</b>                           |          |                     |                 |                 |
| Upgrade kit IP 43 for front trim panel IP 2X | 1 set    | <b>9671.044</b>     | <b>9671.046</b> | <b>9671.048</b> |



### Side panels

#### for TS

Easy positioning on the frame with the location aid.

Six enclosure panel holders with earthing insert ensure automatic potential equalisation with superior EMC protection. Earthing bolts with contact surface are integrated.

#### Material:

Sheet steel, 1.5 mm

#### Surface finish:

Textured RAL 7035

#### Supply includes:

Assembly parts.



| For enclosures     |          | Design                                  | Packs of | Model No. SV    |
|--------------------|----------|---|----------|-----------------|
| Height mm          | Depth mm |   |          |                 |
| 1800               | 600      | IP 55 sealed                            | 2        | <b>8186.235</b> |
| 2000               | 600      |   | 2        | <b>8106.235</b> |
| 2200               | 600      |   | 2        | <b>8126.235</b> |
| 1800               | 600      | IP 2X with ventilation hole             | 2        | <b>9671.986</b> |
| 2000               | 600      |   | 2        | <b>9671.906</b> |
| 2200               | 600      |   | 2        | <b>9671.926</b> |
| 2000               | 800      |   | 2        | <b>9671.908</b> |
| 2200               | 800      |   | 2        | <b>9671.928</b> |
| <b>Accessories</b> |          |   |          |                 |
| -                  | 600      | Upgrade kit IP 43 for side panels IP 2X | 2 sets   | <b>9671.996</b> |
| -                  | 800      |   | 2 sets   | <b>9671.998</b> |



### Roof plates

#### for TS

For SV-TS 8 modular and cable chamber enclosures without roof plate and for replacement with the standard roof plate for other TS enclosures.

#### Material:

Sheet steel, 1.5 mm

#### Surface finish:

Textured RAL 7035

#### Supply includes:

Assembly parts.



#### Also required:

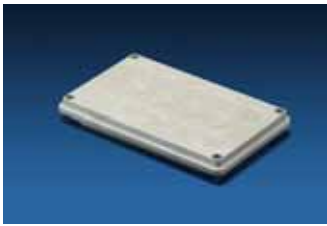
Cable entry gland, see page 478.  
No. of gland plates required for roof plate  
SV 9671.536 = 2  
SV 9671.546 = 3  
SV 9665.903 = 4  
SV 9671.586 = 8



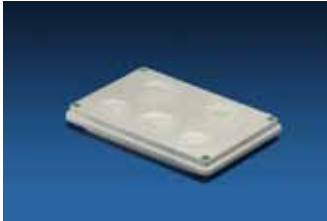
| For enclosures |          | Design                      | Packs of | Model No. SV    |
|----------------|----------|-----------------------------|----------|-----------------|
| Width mm       | Depth mm |                             |          |                 |
| 300            | 600      | IP 55 sealed                | 1        | <b>9671.636</b> |
| 400            | 600      |                             | 1        | <b>9671.646</b> |
| 600            | 600      |                             | 1        | <b>9671.666</b> |
| 800            | 600      |                             | 1        | <b>9671.686</b> |
| 300            | 600      | IP 43 with ventilation hole | 1        | <b>9671.736</b> |
| 400            | 600      |                             | 1        | <b>9671.746</b> |
| 600            | 600      |                             | 1        | <b>9671.766</b> |
| 800            | 600      |                             | 1        | <b>9671.786</b> |
| 600            | 600      | IP 2X with ventilation hole | 1        | <b>9660.235</b> |
| 800            | 600      |                             | 1        | <b>9660.245</b> |
| 300            | 600      | For cable entry gland       | 1        | <b>9671.536</b> |
| 400            | 600      |                             | 1        | <b>9671.546</b> |
| 600            | 600      |                             | 1        | <b>9665.903</b> |
| 800            | 600      |                             | 1        | <b>9671.586</b> |

# Rittal Ri4Power Form 2-4

## Accessories for external mounting



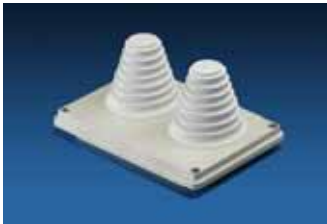
1



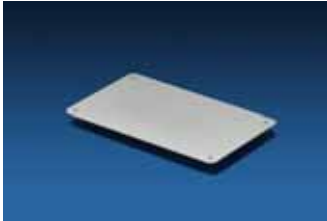
2



3



4



5

### Cable entry glands

- Including seal
- External dimensions 250 x 160 mm
- Protection category IP 55

#### Material:

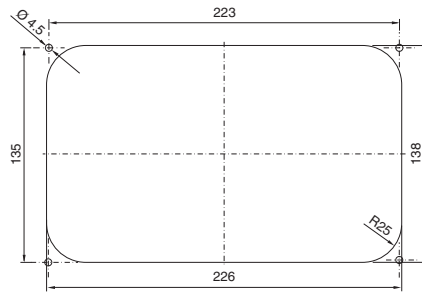
**SV 9665.750 to 9665.780**

Insulating material RAL 7032

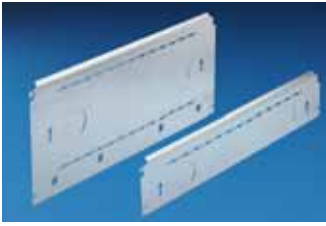
**SV 9665.785**

Sheet steel, spray-finished RAL 7035

| Design  | Packs of | Model No. SV |
|---|----------|--------------|
| 1 14 x M25/32   | 1        | 9665.750     |
| 2 2 x M25/32/40, 1 x M32/40/50, 2 x M40/50/63   | 1        | 9665.760     |
| 3 With sealing membranes<br>32 x dia. 7 – 16 mm, 4 x dia. 10 – 20 mm, 3 x dia. 14 – 26 mm | 1        | 9665.770     |
| 4 With entry glands up to 66 mm diameter  | 1        | 9665.780     |
| 5 Solid   | 4        | 9665.785     |



Cut-out dimensions for  
SV 9665.750 to SV 9665.785



### Functional space side panel modules

#### for TS

For internal separation as a side divider panel for functional spaces, for mounting in the TS pitch pattern. Prepared for the attachment of mounting brackets for horizontal functional space separation or mounting plates with two M40 knockouts for cable entry. Two TS system punchings allow the use of additional TS accessories.

The side panel modules for reduced functional space depth and an auxiliary construction using the Mini-TS profiles can be used to provide a separate enclosure space in the side panel area, e.g. for the provision of a busbar system.

#### Material:

Sheet steel, zinc-plated

#### Supply includes:

Assembly parts.

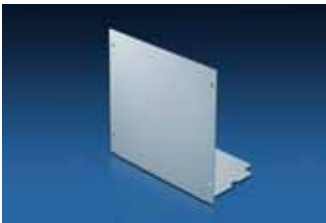


#### Accessories:

Mini-TS extrusions and connector pieces, see page 482.



| Height mm | Configuration with plastic gland plate | Packs of | Model No. SV               |                 |
|-----------|--|----------|----------------------------|-----------------|
|           |  |          | For functional space depth |                 |
|           |  |          | 425 mm                     | 600 mm          |
| 100       | –                                      | 6        | <b>9673.051</b>            | <b>9673.061</b> |
| 150       | –                                      | 6        | <b>9673.055</b>            | <b>9673.065</b> |
| 150       | ■                                      | 6        | <b>9673.155</b>            | <b>9673.165</b> |
| 200       | –                                      | 6        | <b>9673.052</b>            | <b>9673.062</b> |
| 200       | ■                                      | 6        | <b>9673.152</b>            | <b>9673.162</b> |



### Cover plates

#### for cable chamber

For separating an area of the cable chamber enclosure for the busbar space. Attachment requires an auxiliary construction made from the Mini-TS profile in which the covering plates are attached and fastened.

#### Material:

Sheet steel, zinc-plated

#### Supply includes:

Two sets of covering plates consisting of an upper and a lower plate. Including assembly parts.



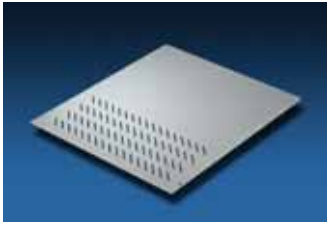
#### Also required:

Frame connector piece (4 x SV 9673.901), see page 482.  
 Corner connector (2 x SV 9673.902), see page 483.  
 Mini-TS extrusions (2 x SV 9673.915, 2 x SV 9673.953), see page 482.

| Width mm | Height mm | Depth mm | For enclosure width mm | Packs of | Model No. SV    |
|----------|-----------|----------|------------------------|----------|-----------------|
| 297      | 541       | 174      | 300                    | 2 sets   | <b>9673.530</b> |
| 397      | 541       | 174      | 400                    | 2 sets   | <b>9673.540</b> |
| 597      | 541       | 174      | 600                    | 2 sets   | <b>9673.560</b> |

# Rittal Ri4Power Form 2-4

## Accessories for internal installation



### Functional space divider

#### For TS, with and without vent slot

For the horizontal separation of functional spaces. In combination with the side panel modules, produces a separation in accordance with Form 3 or 4. Two mounting brackets are required to install the functional space divider.

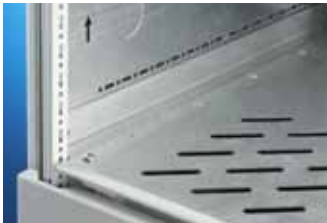
#### Material:

Sheet steel, zinc-plated



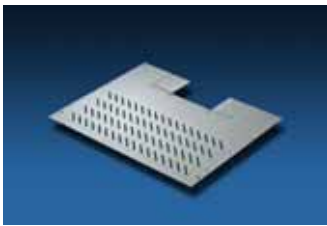
#### Also required:

Mounting bracket, see below.  
Cross members, see page 476.



| Width mm | Depth mm | For enclosure width mm | For max. functional space depth mm | Packs of | Model No. SV    |                              |
|----------|----------|------------------------|------------------------------------|----------|-----------------|------------------------------|
|          |          |                        |                                    |          | Vented          | Solid                        |
| 308      | 445      | 400                    | 425                                | 4        | <b>9673.444</b> | <b>9673.440<sup>1)</sup></b> |
| 508      | 445      | 600                    | 425                                | 4        | <b>9673.464</b> | <b>9673.460<sup>1)</sup></b> |
| 708      | 445      | 800                    | 425                                | 4        | <b>9673.484</b> | <b>9673.480<sup>1)</sup></b> |
| 308      | 588      | 400                    | 600                                | 4        | <b>9673.445</b> | <b>9673.441<sup>1)</sup></b> |
| 508      | 588      | 600                    | 600                                | 4        | <b>9673.465</b> | <b>9673.461<sup>1)</sup></b> |
| 708      | 588      | 800                    | 600                                | 4        | <b>9673.485</b> | <b>9673.481<sup>1)</sup></b> |

<sup>1)</sup> Derating of 5 % with enclosure protection category IP 2X or less, in relation to the rated currents of the selected busbar system.



### Functional space divider

#### for TS, prepared for RiLine60 bar systems, with and without vent slots

For the horizontal separation of functional space with integrated RiLine60 multi-terminal busbar system. In combination with the side panel modules, produces a separation in accordance with Form 3 or 4. Two mounting brackets are required to install the functional space divider.

#### Material:

Sheet steel, zinc-plated



#### Also required:

Mounting bracket, see below.  
Cross members, see page 476.

| Width mm | Depth mm | For enclosure width mm | For functional space depth mm | Position of the bar system in the functional space | Packs of | Model No. SV                 |                                 |
|----------|----------|------------------------|-------------------------------|--|----------|------------------------------|---------------------------------|
|          |          |                        |                               |  |          | Vented                       | Solid                           |
| 308      | 413      | 400                    | 401                           | –  | 4        | <b>9673.434<sup>1)</sup></b> | <b>9673.430<sup>1) 2)</sup></b> |
| 508      | 413      | 600                    | 401                           | –  | 4        | <b>9673.454</b>              | <b>9673.450<sup>2)</sup></b>    |
| 708      | 413      | 800                    | 401                           | Right  | 4        | <b>9673.474</b>              | <b>9673.470<sup>2)</sup></b>    |
| 708      | 413      | 800                    | 401                           | Left   | 4        | <b>9673.475</b>              | <b>9673.471<sup>2)</sup></b>    |

<sup>1)</sup> Only for use with a 3-pole bar system.

<sup>2)</sup> Derating of 5 % with enclosure protection category IP 2X or less, in relation to the rated currents of the selected busbar system.



### Mounting bracket

#### for functional space divider

The mounting bracket is fastened to the TS frame or between a frame section and an auxiliary construction. The mounting bracket is suitable both for fastening to a side panel module and also directly to the TS frame. The functional space dividers can be inserted in the installation openings provided.

#### Material:

Sheet steel, zinc-plated

#### Supply includes:

Assembly parts.

| Length mm | For functional space depth mm | Packs of | Model No. SV                 |
|-----------|-------------------------------|----------|------------------------------|
| 427       | 425                           | 8        | <b>9673.405<sup>1)</sup></b> |
| 552       | 600                           | 8        | <b>9673.406</b>              |

<sup>1)</sup> In conjunction with vertical busbar space separation.





### Partial mounting plates

#### With and without duct, for TS

For direct attachment to the functional space side panel modules.

- Universal internal installation with switchgear and control devices.

- Additional mounting levels.

In combination with functional space dividers and side panel modules, internal separation in accordance with Form 2, 3 or 4 is possible.

#### Material:

Sheet steel, zinc-plated

#### Supply includes:

Angle brackets and assembly parts.

For the construction with duct: additional square cut-out with insulation material plates for closing the cut-out.



#### Also required:

Functional space side panel modules, see page 479.

| Width mm | Height mm | With entry | For enclosure width mm | For functional space height mm | Packs of | Model No. SV |
|----------|-----------|------------|------------------------|--------------------------------|----------|--------------|
| 302      | 145       | –          | 400                    | 150                            | 1        | 9673.641     |
| 302      | 195       | –          | 400                    | 200                            | 1        | 9673.642     |
| 302      | 245       | –          | 400                    | 250                            | 1        | 9673.647     |
| 302      | 295       | –          | 400                    | 300                            | 1        | 9673.643     |
| 302      | 395       | –          | 400                    | 400                            | 1        | 9673.644     |
| 302      | 595       | –          | 400                    | 600                            | 1        | 9673.646     |
| 302      | 795       | –          | 400                    | 800                            | 1        | 9673.648     |
| 302      | 995       | –          | 400                    | 1000                           | 1        | 9673.640     |
| 502      | 143       | –          | 600                    | 150                            | 1        | 9673.661     |
| 502      | 193       | –          | 600                    | 200                            | 1        | 9673.662     |
| 502      | 243       | –          | 600                    | 250                            | 1        | 9673.667     |
| 502      | 293       | –          | 600                    | 300                            | 1        | 9673.663     |
| 502      | 393       | –          | 600                    | 400                            | 1        | 9673.664     |
| 502      | 593       | –          | 600                    | 600                            | 1        | 9673.666     |
| 502      | 793       | –          | 600                    | 800                            | 1        | 9673.668     |
| 502      | 993       | –          | 600                    | 1000                           | 1        | 9673.660     |
| 502      | 143       | ■          | 600                    | 150                            | 1        | 9673.671     |
| 502      | 193       | ■          | 600                    | 200                            | 1        | 9673.672     |
| 502      | 243       | ■          | 600                    | 250                            | 1        | 9673.677     |
| 502      | 293       | ■          | 600                    | 300                            | 1        | 9673.673     |
| 502      | 393       | ■          | 600                    | 400                            | 1        | 9673.674     |
| 702      | 143       | –          | 800                    | 150                            | 1        | 9673.681     |
| 702      | 193       | –          | 800                    | 200                            | 1        | 9673.682     |
| 702      | 243       | –          | 800                    | 250                            | 1        | 9673.687     |
| 702      | 293       | –          | 800                    | 300                            | 1        | 9673.683     |
| 702      | 393       | –          | 800                    | 400                            | 1        | 9673.684     |
| 702      | 593       | –          | 800                    | 600                            | 1        | 9673.686     |
| 702      | 793       | –          | 800                    | 800                            | 1        | 9673.688     |
| 702      | 993       | –          | 800                    | 1000                           | 1        | 9673.680     |



### Support frame

#### for DIN rail-mounted devices

Supporting frame set for accepting DIN rail-mounted devices (e.g. MCBs). The support rails are fastened with two mounting brackets to the side panel modules. The front trim panel is fastened with knurled screws to the support frame. In combination with functional space dividers, partial mounting plates and side panel modules, separation in accordance with Form 2, 3 or 4 is possible.

#### Material:

Support frame: Sheet steel, zinc-plated  
Front trim panel: Sheet steel, spray-finished

#### Supply includes:

2 support rails,  
2 mounting brackets,  
1 front trim panel with cut-out,  
assembly parts.



#### Also required:

Functional space side panel modules, see page 479.

| For enclosure width mm | For functional space height mm | No. of pitch units 17.5 mm | Packs of | Model No. SV |
|------------------------|--------------------------------|----------------------------|----------|--------------|
| 600                    | 150                            | 1 x 24                     | 1 set    | 9674.761     |
| 600                    | 300                            | 2 x 24                     | 1 set    | 9674.762     |
| 600                    | 600                            | 3 x 24                     | 1 set    | 9674.763     |
| 600                    | 600                            | 4 x 24                     | 1 set    | 9674.764     |
| 800                    | 150                            | 1 x 36                     | 1 set    | 9674.781     |
| 800                    | 300                            | 2 x 36                     | 1 set    | 9674.782     |
| 800                    | 600                            | 3 x 36                     | 1 set    | 9674.783     |
| 800                    | 600                            | 4 x 36                     | 1 set    | 9674.784     |

# Rittal Ri4Power Form 2-4

## Accessories for internal installation



### Mini-TS profiles 17 x 15.5 mm for TS

Mounting bracket with TS pitch on three sides. Suitable for

- building an auxiliary construction for dividing the busbar space,
- individual use as mounting frame for low and medium loads,
- fastening in the internal or external mounting level of the TS 8 enclosure.

#### Material:

Sheet steel, zinc-plated



#### Also required:

Frame connector piece, see below.  
T-connector piece, see below.  
Corner connector, see page 483.



| For horizontal busbar space separation |           | Packs of | Model No. SV |
|--|-----------|----------|--------------|
| For functional space depth mm          | Length mm |          |              |
| 425                                    | 62.5      | 12       | 9673.915     |

| For vertical busbar space separation |           | Packs of | Model No. SV |
|--------------------------------------|-----------|----------|--------------|
| For functional space height mm       | Length mm |          |              |
| 350                                  | 337.5     | 12       | 9673.942     |
| 400                                  | 387.5     | 12       | 9673.943     |
| 450                                  | 437.5     | 12       | 9673.952     |
| 500                                  | 487.5     | 12       | 9673.953     |

| For external mounting level  |           | Packs of | Model No. SV |
|------------------------------|-----------|----------|--------------|
| For enclosure width/depth mm | Length mm |          |              |
| 300                          | 162.5     | 12       | 9673.930     |
| 400                          | 262.5     | 12       | 9673.940     |
| 500                          | 362.5     | 12       | 9673.950     |
| 600                          | 462.5     | 12       | 9673.960     |
| 800                          | 662.5     | 12       | 9673.980     |

| For internal mounting level  |           | Packs of | Model No. SV |
|------------------------------|-----------|----------|--------------|
| For enclosure width/depth mm | Length mm |          |              |
| 300                          | 212.5     | 12       | 9673.931     |
| 400                          | 312.5     | 12       | 9673.941     |
| 500                          | 412.5     | 12       | 9673.951     |
| 600                          | 512.5     | 12       | 9673.961     |
| 800                          | 712.5     | 12       | 9673.981     |

| Packs of | Model No. SV |
|----------|--------------|
| 24       | 9673.901     |



### Frame connector piece

#### for Mini-TS profile

Mounting part with integral M4 threads for attaching the Mini-TS profile to the horizontal and vertical TS frame section (external level). The frame adaptor piece can be used as a self-holding construct in the TS pitch and fastened with a screw to the frame. Can also be used for fastening other sections with TS pitch.

#### Material:

Die-cast zinc

#### Supply includes:

Assembly parts.



### T-connector piece

#### for Mini-TS profile

Mounting part with integrated M4 threads for fastening the Mini-TS profile to the

- horizontal and vertical TS chassis,
- Mini-TS profile,
- vertical TS frame section (internal level).

The T-connector piece can be used as a self-holding construct in the TS pitch and fastened with a screw to the frame. Can also be used for fastening other sections with TS pitch.

#### Material:

Die-cast zinc

#### Supply includes:

Assembly parts.

| Packs of | Model No. SV |
|----------|--------------|
| 24       | 9673.903     |



### Corner connector

#### for Mini-TS profile

Mounting part with integrated M4 threads for connecting two Mini-TS profiles at an angle of 90° at the corner. Required for building the auxiliary construction for the busbar space separation.

| Packs of | Model No. SV |
|----------|--------------|
| 10       | 9673.902     |

**Material:**

Die-cast zinc

**Supply includes:**

Assembly parts.



### System attachments

#### For main busbar system

System attachment with M5 and M6 threads in the 50 mm pitch for the rear installation of a RiLine60 main busbar system up to 1600 A. For locating into the TS frame.

**Material:**

Sheet steel, zinc-plated

**Supply includes:**

Assembly parts.

**Note:**

RiLine60 busbar systems, see page 350 – 353.

| Width mm | Height mm | For enclosure width mm | Packs of | Model No. SV |
|----------|-----------|------------------------|----------|--------------|
| 238.5    | 362       | 300                    | 1        | 9674.003     |
| 338.5    | 362       | 400                    | 1        | 9674.004     |
| 538.5    | 362       | 600                    | 1        | 9674.006     |
| 738.5    | 362       | 800                    | 1        | 9674.008     |

### Mounting accessories

#### for busbar system

The following accessory components must be used for mounting a type-tested vertical multi-terminal busbar system behind the functional space:



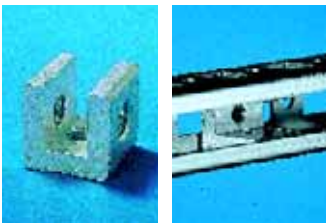
### PS punched rails 23 x 23 mm

For installing a vertical RiLine60 multi-terminal busbar system on the vertical enclosure section, see page 998.



### Fastening bracket

For mounting the PS mounting rail on the TS frame, see page 1006.



### U nuts

For fastening the PS mounting rail to the bracket and fastening the busbar support to the PS mounting rail, see page 1010.