

# Stainless steel

## Features

Be it automation, communications or power supply technology, Rittal offers the correct enclosures and cabinets to suit virtually all requirement profiles in modern industrial technology. Of course, these are also available in stainless steel for extremely high standards of hygiene and corrosion protection.

Cleverly thought-out system platforms, in conjunction with an extensive selection of system accessories, provide the basis for the outstanding solution diversity of the Rittal stainless steel range.

Why not arrange a consultation? We cater to your requirements.

1.6 B  
Stainless steel



### Compact enclosures



**Switch housing**  
prepared for 1 – 4 switches.



**Terminal boxes** with quick-release fastener lid and profile strips with mounting holes on both sides for the installation of mounting angles or mounting plate.



**Premium Line KL**  
Resistant to high-pressure cleaning, IP 69K and high level of EMC shielding, thanks to the sealing system and metallic contact between the enclosure and rear panel.



**Bus enclosure** with 180° hinges and built-in support rail.



### Compact enclosures



**Enclosure protection channel** prevents the ingress of dirt and water when the door is opened.



**Rain canopies** for AE offer additional protection.



**AE IP 69K**  
Perfect protection in a tough environment.

### Command Panel/support arm system



#### Premium Panel

First-class in terms of sealing, protection, hygiene and design, with or without keyboard housing.

#### Command Panel housing with door

with handle strips and rear panel with welded nuts for the attachment of a mounting plate or support rails.

Suitable for demanding corrosion protection requirements, and resistant to high-pressure cleaning.

### Operating station/consoles



The **IW operating station** offers a complete solution for use in areas where hygiene is important.

The lid stay of the **one-piece consoles** is locked to prevent unintentional closure.

Maximum space for cable entry with divided gland plates.

### Enclosure systems

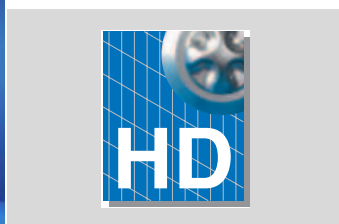


**PC enclosure system** with keyboard drawer.

**Baying systems TS 8** – infinite possibilities for interior installation.

**Free-standing enclosures ES 5000** with profiled enclosure formed from a single piece (roof + side).

### Hygienic Design

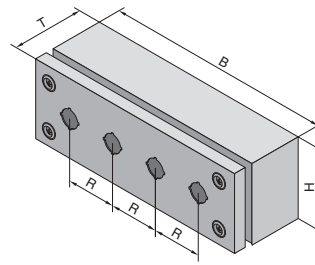


For further information on the design of production plant in open processes in the food and consumables industry where ease of cleaning is a key consideration, please refer to page 297.

Cable gland HD, stainless steel, see page 1056.

# Stainless steel

## Switch housing



1.6  
Stainless steel

### Switch housing

For the installation of switches and other command devices Ø 22.5 mm.

### Benefits:

- Integral lid clip allows you to keep your hands free when wiring.
- Versatile attachment options: Screw fastening from the inside or outside, and via wall mounting brackets.
- Opening and closing the lid with quick-release fasteners (a three-quarter revolution is sufficient).

### Material:

Stainless steel  
Enclosure: 1.25 mm  
Cover: 1.25 mm

### Surface finish:

Enclosure and cover:  
Brushed, grain 240

### Protection category:

IP 66 to EN 60 529/09.2000,  
complies with NEMA 4x.

### Supply includes:

Enclosure,  
lid with foamed-in seal and 2 or  
4 quick-release fasteners.

**Detailed drawing,**  
see page 1220.

Width (B) mm	Packs of	100	160	220	280	Page
Height (H) mm		100	100	100	100	
Depth (T) mm		90	90	90	90	
Model No. SM	1.4301 (AISI 304)	1	<b>2384.010</b>	<b>2384.020</b>	<b>2384.030</b>	<b>2384.040</b>
	1.4404 (AISI 316L)	1	<b>2384.510<sup>1)</sup></b>	<b>2384.520<sup>1)</sup></b>	<b>2384.530<sup>1)</sup></b>	<b>2384.540<sup>1)</sup></b>
Pitch pattern (R) mm		–	60	60	60	
No. of switch cut-outs		1	2	3	4	

### Accessories

Wall mounting bracket	4	1594.000	1594.000	1594.000	1594.000	975
-----------------------	---	----------	----------	----------	----------	-----

<sup>1)</sup> Delivery times available on request.



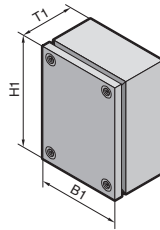
### Cable glands

made from polyamide or brass.  
Model No. see page 1054.



### Integral lid clip

allows you to keep your hands  
free when wiring.



**Material:**

Stainless steel  
Enclosure: 1.25 mm  
Cover: 1.25 mm

**Surface finish:**

Enclosure and cover:  
Brushed, grain 180

**Protection category:**

IP 66 to EN 60 529/09.2000,  
complies with NEMA 4x.

**Supply includes:**

Enclosure, cover with all-round  
foamed-in PU-seal and quick-  
action screws, including plastic  
bushes.

**Approvals,**

see page 25.

**Detailed drawing,**

see page 1175.

Width (B1) mm		Packs of	150	300	200	300	400	300	Page
Height (H1) mm			150	150	200	200	200	300	
Depth (T1) mm			80	80	80	80	120	120	
<b>Model No. KL</b>	1.4301 (AISI 304) with PU seal	1	<b>1521.010</b>	<b>1522.010</b>	<b>1523.010</b>	<b>1524.010</b>	<b>1525.010</b>	<b>1526.010</b>	
	1.4301 (AISI 304) with silicone seal	1	<b>1521.020<sup>1)</sup></b>	<b>1522.020<sup>1)</sup></b>	<b>1523.020<sup>1)</sup></b>	<b>1524.020<sup>1)</sup></b>	<b>1525.020<sup>1)</sup></b>	<b>1526.020<sup>1)</sup></b>	
	1.4404 (AISI 316L) with PU seal	1	<b>1521.510<sup>1)</sup></b>	<b>1522.510<sup>1)</sup></b>	<b>1523.510<sup>1)</sup></b>	<b>1524.510<sup>1)</sup></b>	<b>1525.510<sup>1)</sup></b>	<b>1526.510<sup>1)</sup></b>	
	1.4404 (AISI 316L) with silicone seal	1	<b>1521.520<sup>1)</sup></b>	<b>1522.520<sup>1)</sup></b>	<b>1523.520<sup>1)</sup></b>	<b>1524.520<sup>1)</sup></b>	<b>1525.520<sup>1)</sup></b>	<b>1526.520<sup>1)</sup></b>	
Weight (kg)			1.3	1.8	1.8	2.4	3.6	3.9	
Cover screws			4	4	4	4	4	4	
<b>Accessories</b>									
Mounting plate		1	1560.700	1561.700	1562.700	1563.700	1564.700	1567.700	978
Wall mounting bracket		4	1594.000	1594.000	1594.000	1594.000	1594.000	1594.000	975
Wall angle		1	2583.000	2583.000	2583.000	2583.000	2583.000	2583.000	976
Pole clamp		1	2584.000	2584.000	2584.000	2584.000	2584.000	2584.000	976
Support rails TS 35/7.5		10	2314.000	2316.000	2315.000	2316.000	2317.000	2316.000	1002
Cover hinge, stainless steel 1.4404		2	1592.010	1592.010	1592.010	1592.010	1592.010	1592.010	962
Pressure relief stopper		5	2459.500	2459.500	2459.500	2459.500	2459.500	2459.500	916

<sup>1)</sup> Delivery times available on request.



**Wall mounting bracket**  
for secure attachment to the  
wall.  
Model No. see page 975.

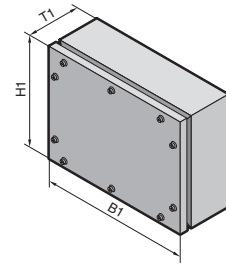


**Housing coupling**  
for attaching the 120 mm deep  
KL to the support arm system.  
Model No. see page 314.

# Stainless steel

## Premium Line KL, protection category IP 69K

1.6 B  
Stainless steel



The correct solution in cases where high-pressure cleaning is a priority.

- **Resistant to high-pressure cleaning** (protection category IP 69K). The seal lies between two surfaces and is optimally compressed by the screw fastening.
- **Suitable for clean room use.** Optional screw fastening to comply with high standards in the food industry:
  - 1 external with hex screws,
  - 2 internal with plastic bungs.

- **Optimum EMC conditions.** The labyrinth seal achieves a particularly high level of RF shielding of the enclosure.
- **Accessibility.** Internal rear panel bracket. This solution is clearly superior to external hinges from a hygiene point of view.
- Wall mounting can be implemented directly from the rear using M8 pull-in nuts, or from the front using wall mounting brackets.

**Material:**  
Stainless steel, 1.5 mm

**Surface finish:**  
Brushed, grain 240

**Protection category:**  
IP 69K to DIN 40 050-9



**Rittal service:**

Other sizes and other enclosures with this sealing concept are available on request. Cut-outs and drilled holes to your specifications.

**Detailed drawing,**  
see page 1221.

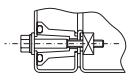
Width (B1) mm	Packs of	150	150	300	400	Page
Height (H1) mm		150	150	200	300	
Depth (T1) mm		80	120	120	120	
<b>Model No. KL</b>	1.4301 (AISI 304)	1	<b>1024.010</b>	<b>1024.020</b>	<b>1024.030</b>	<b>1024.040</b>
	1.4404 (AISI 316L)	1	<b>1024.510<sup>1)</sup></b>	<b>1024.520<sup>1)</sup></b>	<b>1024.530<sup>1)</sup></b>	<b>1024.540<sup>1)</sup></b>
Number of lid screws		4	4	6	10	

<b>Accessories</b>						
Mounting plate	1	1024.910	1024.910	1024.920	1024.930	978
Wall mounting bracket	4	1594.000	1594.000	1594.000	1594.000	975
Wall angle	1	2583.000	2583.000	2583.000	2583.000	976
Rear panel bracket	2	6682.000	6682.000	6682.000	6682.000	962

<sup>1)</sup> Delivery times available on request.



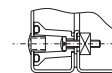
1



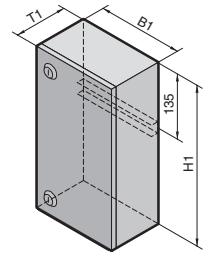
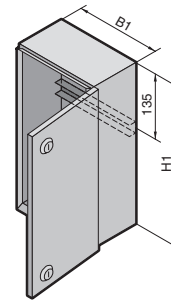
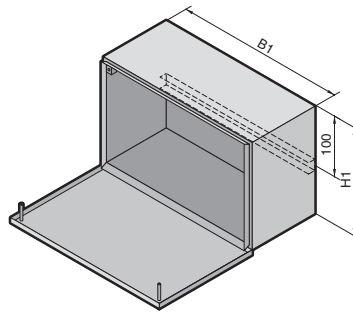
Depending on customer requirements, screw head on the outside . . .



2

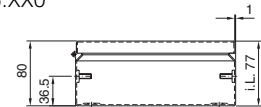
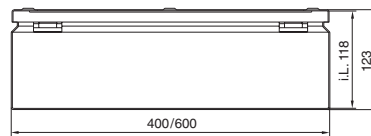


. . . or plastic stoppers on the outside with concealed screws (included in the supply).



BG 1558.XX0, BG 1559.XX0

BG 1583.XX0, BG 1584.XX0,  
BG 1585.XX0



**Material:**

Stainless steel  
Enclosure: 1.25 mm  
Cover: 1.25 mm  
Hinges:  
Die-cast zinc

**Surface finish:**

Enclosure and cover:  
Brushed, grain 240  
Hinges: plated

**Protection category:**

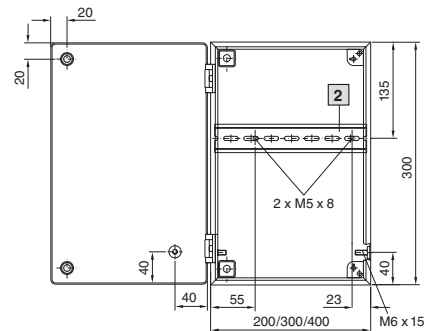
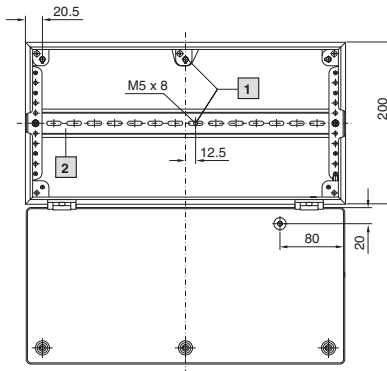
IP 66 to EN 60 529/09.2000,  
complies with NEMA 4x.

**Supply includes:**

Enclosure with 1 support rail  
TS 35/7.5  
Lid with foamed seal 180° hinged  
with quick-release fasteners.

**Approvals,**

see page 40.



1 Only for BG 1559.XX0

2 Support rail TS 35/7.5

i.L. = Clearance width

Width (B1) mm	Packs of	200	300	400	400	600	Page
Height (H1) mm		300	300	300	200	200	
Depth (T1) mm		80	80	80	123	123	
Model No. BG	1.4301 (AISI 304) with PU seal	1	1583.010 <sup>1)</sup>	1584.010 <sup>1)</sup>	1585.010 <sup>1)</sup>	1558.010 <sup>2)</sup>	1559.010 <sup>2)</sup>
	1.4301 (AISI 304) with silicone seal	1	1583.020 <sup>3)</sup>	1584.020 <sup>3)</sup>	1585.020 <sup>3)</sup>	1558.020 <sup>3)</sup>	1559.020 <sup>3)</sup>
	1.4404 (AISI 316L) with PU seal	1	1583.500 <sup>3)</sup>	1584.500 <sup>3)</sup>	1585.500 <sup>3)</sup>	1558.500 <sup>3)</sup>	1559.500 <sup>3)</sup>
	1.4404 (AISI 316L) with silicone seal	1	1583.530 <sup>3)</sup>	1584.530 <sup>3)</sup>	1585.530 <sup>3)</sup>	1558.530 <sup>3)</sup>	1559.530 <sup>3)</sup>
Weight (kg)		2.8	3.7	4.5	4.5	6.0	

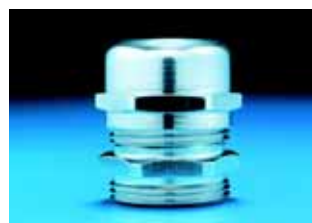
**Accessories**

Wall mounting bracket	4	1594.000	1594.000	1594.000	1594.000	1594.000	975
Pole clamp	1	2584.000	2584.000	2584.000	2584.000	2584.000	976
Condensate discharge	6	2459.000	2459.000	2459.000	2459.000	2459.000	916

<sup>1)</sup> Support rail fixed on studs  
<sup>2)</sup> Support rail adjustable on profile strip  
<sup>3)</sup> Extended delivery times.



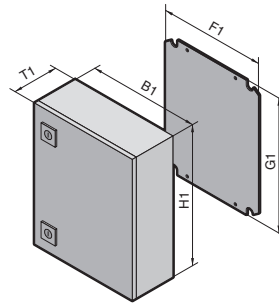
**Wall mounting bracket**  
for the secure attachment of  
enclosures.  
Model No. see page 975.



**EMC cable glands**  
with contact spring for optimum  
all-round contact.  
Model No. see page 1032.

# Stainless steel

## Compact enclosures AE



1.6

Stainless steel

### Material:

Stainless steel  
Enclosure and door:  
Stainless steel  
Mounting plate: Sheet steel  
Cam lock: Die-cast zinc,  
nickel-plated

### Surface finish:

Enclosure and door:  
Brushed, grain size 240  
Mounting plate: Zinc-plated

### Protection category:

IP 66 to EN 60 529/09.2000  
for AE 1001.XX0 – AE 1017.XX0,  
complies with NEMA 4x.

### Supply includes:

Enclosure, door(s) with foamed-  
in PU seal, mounting plate.

**Approvals,**  
see page 28.

**Detailed drawing,**  
see page 1179.

Width (B1) mm	Packs of	200	200	300	380	380	300	380	600	400	Page
Height (H1) mm		300	300	300	300	300	380	380	380	500	
Depth (T1) mm		120	155	210	155	210	210	210	210	210	
Mounting plate width (F1) mm		162	162	254	334	334	254	334	549	354	
Mounting plate height (G1) mm		275	275	275	275	275	355	355	355	475	
Model No. AE	1.4301 (AISI 304) with PU seal	1	1001.600	1002.600	1003.600	1004.600	1011.600	1005.600	1006.600	1009.600	1015.600
	1.4301 (AISI 304) with silicone seal	1	1001.620 <sup>1)</sup>	1002.620 <sup>1)</sup>	1003.620 <sup>1)</sup>	1004.620 <sup>1)</sup>	1011.620 <sup>1)</sup>	1005.620 <sup>1)</sup>	1006.620 <sup>1)</sup>	1009.620 <sup>1)</sup>	1015.620 <sup>1)</sup>
	1.4404 (AISI 316L) with PU seal	1	1001.500 <sup>1)</sup>	1002.500	1003.500 <sup>1)</sup>	1004.500 <sup>1)</sup>	1011.500 <sup>1)</sup>	1005.500	1006.500	1009.500 <sup>1)</sup>	1015.500 <sup>1)</sup>
	1.4404 (AISI 316L) with silicone seal	1	1001.520 <sup>1)</sup>	1002.520 <sup>1)</sup>	1003.520 <sup>1)</sup>	1004.520 <sup>1)</sup>	1011.520 <sup>1)</sup>	1005.520 <sup>1)</sup>	1006.520 <sup>1)</sup>	1009.520 <sup>1)</sup>	1015.520 <sup>1)</sup>
Door		1	1	1	1	1	1	1	1	1	
Weight (kg)		3.6	4.1	6.9	7.4	8.4	8.4	9.8	14.6	12.9	

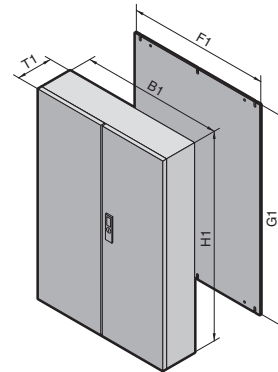
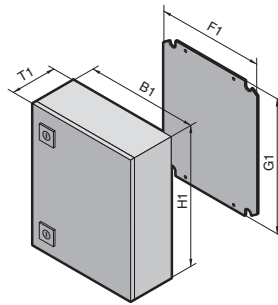
### Accessories

Rain canopy	1	–	2470.000	2361.000	2471.000	2472.000	2361.000	2472.000	2473.000	–	969
Wall mounting bracket	1.4301 (AISI 304)	4	2433.000	2433.000	2433.000	2433.000	2433.000	2433.000	2433.000	2433.000	975
	1.4404 (AISI 316L)	4	2433.500	2433.500	2433.500	2433.500	2433.500	2433.500	2433.500	2433.500	975
Wall angle	1	2583.000	2583.000	2583.000	2583.000	2583.000	2583.000	2583.000	2583.000	2583.000	976
Pole clamp	1	2584.000	2584.000	2584.000	2584.000	2584.000	2584.000	2584.000	2584.000	2584.000	976
Cam lock 1.4404 (AISI 316L)	1	2304.000	2304.000	2304.000	2304.000	2304.000	2304.000	2304.000	2304.000	2304.000	955

### Lock systems

Standard double-bit lock insert may be exchanged in enclosures with cam (except AE 1018.600/AE 1019.600) for lock inserts 41 mm, lock cylinder insert, plastic handle, T handles, type C, see page 954 – 957.

<sup>1)</sup> Delivery times available on request.



**Material:**

Stainless steel  
Enclosure and door:  
Stainless steel  
Mounting plate: Sheet steel  
Cam lock: Die-cast zinc,  
nickel-plated

**Protection category:**

IP 66 to EN 60 529/09.2000  
for AE 1001.XX0 – AE 1017.XX0,  
complies with NEMA 4x.  
IP 55 to EN 60 529/09.2000  
for AE 1018.XX0/AE 1019.XX0,  
complies with NEMA 12.

**Supply includes:**

Enclosure, door(s) with foamed-in seal, 3-point lock system, for AE 1017.XXX and AE 1019.XXX, mounting plate.

**Approvals,**  
see page 28.

**Detailed drawing,**  
see page 1179.

**Surface finish:**

Enclosure and door:  
Brushed, grain size 240  
Mounting plate: Zinc-plated

Width (B1) mm	Packs of	500	500	380	600	600	760	800	800	1000	1000	Page
Height (H1) mm		500	500	600	600	760	760	1000	1200	1000	1200	
Depth (T1) mm		210	300	210	210	210	300	300	300	300	300	
Mounting plate width (F1) mm		449	449	334	549	549	704	739	740	939	940	
Mounting plate height (G1) mm		470	470	570	570	730	730	955	1155	955	1155	
<b>Model No. AE</b>	1.4301 (AISI 304) with PU seal	1	<b>1007.600</b>	<b>1013.600</b>	<b>1008.600</b>	<b>1010.600</b>	<b>1012.600</b>	<b>1014.600</b>	<b>1016.600</b>	<b>1017.600</b>	<b>1018.600</b>	<b>1019.600</b>
	1.4301 (AISI 304) with silicone seal	1	<b>1007.620<sup>1)</sup></b>	<b>1013.620<sup>1)</sup></b>	<b>1008.620<sup>1)</sup></b>	<b>1010.620<sup>1)</sup></b>	<b>1012.620<sup>1)</sup></b>	<b>1014.620<sup>1)</sup></b>	<b>1016.620<sup>1)</sup></b>	<b>1017.620<sup>1)</sup></b>	–	–
	1.4404 (AISI 316L) with PU seal	1	<b>1007.500<sup>1)</sup></b>	<b>1013.500<sup>1)</sup></b>	<b>1008.500<sup>1)</sup></b>	<b>1010.500</b>	<b>1012.500<sup>1)</sup></b>	<b>1014.500<sup>1)</sup></b>	<b>1016.500<sup>1)</sup></b>	<b>1017.500<sup>1)</sup></b>	<b>1018.500<sup>1)</sup></b>	<b>1019.500</b>
	1.4404 (AISI 316L) with silicone seal	1	<b>1007.520<sup>1)</sup></b>	<b>1013.520<sup>1)</sup></b>	<b>1008.520<sup>1)</sup></b>	<b>1010.520<sup>1)</sup></b>	<b>1012.520<sup>1)</sup></b>	<b>1014.520<sup>1)</sup></b>	<b>1016.520<sup>1)</sup></b>	<b>1017.520<sup>1)</sup></b>	–	–
Door(s)		1	1	1	1	1	1	1	1	2	2	
Weight (kg)		15.7	18.4	15.1	23.5	30.2	42.5	52.9	61.5	71.0	76.0	

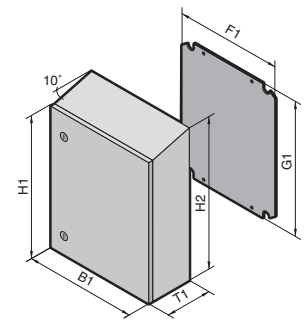
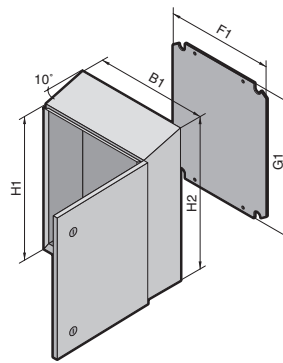
<b>Accessories</b>												
Rain canopy	1	2362.000	–	2472.000	2473.000	2473.000	2474.000	2475.000	2475.000	2363.000	2363.000	969
Wall mounting bracket	1.4301 (AISI 304)	4	2433.000	2433.000	2433.000	2433.000	2433.000	2433.000	2433.000	2433.000	2433.000	975
	1.4404 (AISI 316L)	4	2433.500	2433.500	2433.500	2433.500	2433.500	2433.500	2433.500	2433.500	2433.500	975
Wall angle	1	2583.000	2583.000	2583.000	2583.000	2583.000	2583.000	2583.000	2583.000	2583.000	2583.000	976
Pole clamp	1	2584.000	2584.000	2584.000	2584.000	2584.000	–	–	–	–	–	976
Cam lock 1.4404 (AISI 316L)	1	2304.000	2304.000	2304.000	2304.000	2304.000	2304.000	2304.000	–	2304.000	–	955

**Lock systems**  
Standard double-bit lock insert may be exchanged in enclosures with cam (except AE 1017.600/AE 1019.600) for lock inserts 41 mm, lock cylinder insert, plastic handle, T handles, type C, see page 954 – 957.  
With AE 1018.600, may only be exchanged for 41 mm lock inserts, type C, see page 956.  
For enclosures with locking rod, may be exchanged for 27 mm lock inserts, type A, see page 956 and Ergoform-S lock system, see page 953.

<sup>1)</sup> Delivery times available on request.

# Stainless steel

## Compact enclosures AE, protection category IP 69K



1.6 B  
Stainless steel

### Perfect protection in a tough environment

The compact enclosure AE to IP 69K is the ideal solution when a high protection category, corrosion resistance and optimum cleanability are needed.

- **Resistant to high-pressure cleaning** (protection category IP 69K). The interior seal is protected against direct hosed water.
- Ideal for mounting on vehicles: Lock, hinges and mounting plate are all vibration resistant.
- 10° roof tilt prevents liquids from accumulating on the roof.

- Foamed-in silicone seal. The closed cell structure of the foam means that water absorption is negligible. Temperature resistant from -60°C to +180°C.

### Material:

Enclosure and door: Stainless steel 1.4301 (AISI 304)  
Mounting plate: Sheet steel

### Surface finish:

Enclosure and door: Brushed, grain size 240  
Mounting plate: Zinc-plated

### Protection category:

IP 69K to DIN 40 050-9, complies with NEMA 4x.

### Supply includes:

Enclosure sealed all round, single-door, door hinge may be swapped to opposite side, cam lock with double-bit insert, mounting plate.



### Rittal service:

Other sizes available on request. Cut-outs and drilled holes to your specifications.

**Detailed drawing,** see page 1221.

Width (B1) mm	Packs of	230	400	400	650	Page
Height, front (H1) mm		330	400	650	650	
Height, rear (H2) mm		352	439	689	689	
Depth (T1) mm		155	250	250	250	
Mounting plate width (F1) mm		162	334	334	549	
Mounting plate height (G1) mm		275	355	570	570	
Mounting plate thickness mm		2	2	2.5	2.5	
<b>Model No. AE</b>	1	<b>1101.110</b>	<b>1101.120</b>	<b>1101.130</b>	<b>1101.140</b>	
Locks		1	1	2	2	
<b>Accessories</b>						
Interior door	1	1101.910	1101.920	1101.930	1101.940	939
Door stay	1	1101.800	1101.800	1101.800	1101.800	967
Wall mounting bracket	4	2433.000	2433.000	2433.000	2433.000	975

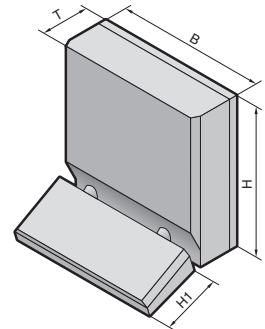
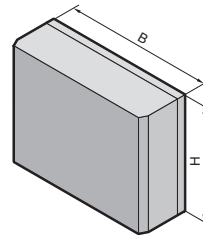


**Door, internal**  
with 4 (2 for 1101.110) bolts for universal installation.



**Wall mounting**  
directly from the rear via M8 nut or with wall mounting bracket, see page 975.

## Premium Panel, protection category IP 69K



Stainless steel  
B  
1.6

### Optionally with or without keyboard housing

- **Resistant to high-pressure cleaning** (protection category IP 69K). The seal lies between two surfaces and is ideally compressed by the screw fastening (see detailed drawing).
- **Suitable for clean room use.** Screw-fastening to comply with high standards in the food industry. With plastic stoppers on the inside or hex screws on the outside.

- **Optimum EMC conditions.** The labyrinth seal achieves a particularly high level of RF shielding of the enclosure.
- **Accessibility.** Internal rear panel bracket. This solution is clearly superior to external hinges from a hygiene point of view.
- **Handling.** Two duct connectors between the enclosures.

**Material:**  
Stainless steel

**Surface finish:**  
Brushed, grain 240

**Protection category:**  
IP 69K to DIN 40 050-9

**Property rights:**  
German patent no. 102 16 430

**Clean room:**  
Air purity class 1 to DIN EN ISO 14 644-1

**Detailed drawing,**  
see page 1222.

		Packs of	Premium Panel					
			with keyboard housing				without keyboard housing	
<b>Model No. CP</b>	1.4301 (AISI 304)	1	<b>6680.000</b>	<b>6680.010</b>	<b>6680.100</b>	<b>6680.110</b>	<b>6681.000</b>	<b>6681.100</b>
	1.4404 (AISI 316L)	1	<b>6650.000<sup>1)</sup></b>	<b>6650.010<sup>1)</sup></b>	<b>6650.100<sup>1)</sup></b>	<b>6650.110<sup>1)</sup></b>	<b>6651.000<sup>1)</sup></b>	<b>6651.100<sup>1)</sup></b>
<b>Width (B) mm</b>			530	530	530	530	530	530
<b>Height mm</b>	Operating housing (H)		460	460	460	460	360	360
	Keyboard housing (H1)		200	200	200	200	–	–
<b>Depth mm</b>	Operating housing (T)		120	120	220	220	120	220
	For installation panel W x H		482.6 mm (19") x 354.8 mm (8 U)				482.6 mm (19") x 310 mm (7 U)	
<b>Installation depth mm</b>	Operating housing		115	115	215	215	115	215
	Keyboard housing		front 58 rear 63	front 58 rear 63	front 58 rear 63	front 58 rear 63	–	–
<b>Support arm connection</b>			top	bottom	top	bottom	top, or bottom by rotating the enclosure	
<b>Accessories</b>								
<b>Rear panel bracket</b>		2	6682.000	6682.000	6682.000	6682.000	6682.000	6682.000

<sup>1)</sup> Delivery times available on request.



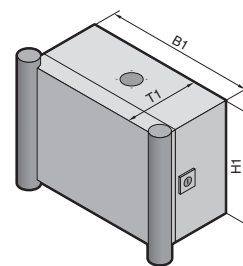
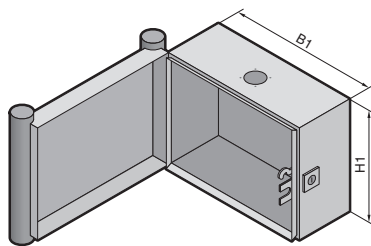
The **rear panel holder** holds the rear panel in an open position. Model No. see page 962.



**Premium TFT 17"**  
Model No. see page 1133.

# Stainless steel

## Command Panel housing with door



1.6  
Stainless steel

### Material:

Enclosure and door:  
Stainless steel  
Handle strips: Plastic-approved for use with foodstuffs, similar to RAL 5002 (ultramarine blue).

### Surface finish:

Brushed, grain 240

### Protection category:

IP 66 to EN 60 529/09.2000

### Supply includes:

Enclosure sealed all-round, with cut-out and reinforcement for support arm system, fastener with guide plate. Door with sealing frame and side handle strips. The support arm connection and door hinge may be swapped over by rotating the enclosure.



### Rittal service:

Separate keyboard housing, other sizes, modified support arm connection or door hinge, drilled holes and cut-outs for switches and operator panels available on request.

### Approvals,

see page 38.

### Detailed drawing,

see page 1223.

Width (B1) mm	Packs of	300	400	400	600	Page
Height (H1) mm		300	300	400	400	
Depth (T1) mm		150	150	150	150	
Model No. CP	1.4301 (AISI 304)	1	<b>6535.010</b>	<b>6536.010</b>	<b>6538.010</b>	<b>6539.010</b>
	1.4404 (AISI 316L)	1	<b>6535.510<sup>1)</sup></b>	<b>6536.510<sup>1)</sup></b>	<b>6538.510<sup>1)</sup></b>	<b>6539.510<sup>1)</sup></b>
Weight kg		6.3	7.5	8.8	12.1	

### Accessories

Matching mounting plate from AE	ID no.	1033.500	1030.500	1380.500	1039.500	128	
Support rails <sup>2)</sup> SZ	Model No. SZ	10	2316.000	2317.000	2317.000	2319.000	1002

### Lock systems

Standard double-bit lock insert may be exchanged for 41 mm lock inserts, plastic handle and T handle, type C, see page 954 – 956.

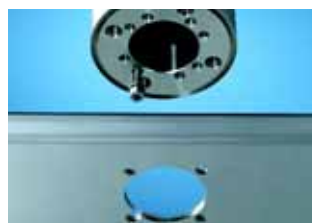
<sup>1)</sup> Delivery times available on request.

<sup>2)</sup> Only with vertical attachment of punched rail 23 x 23 mm, see page 998.



### Semi-cylinder lock

for retro-fitting to all stainless steel enclosures with cam lock. Model No. see page 957.



### Enclosure attachment CP-S, stainless steel

with pre-fitted screw for locating. Model No. see page 314.



### Support arm system CP-S, stainless steel

In conjunction with stainless steel Command Panels, terminal boxes 120 mm deep and compact enclosures AE from stainless steel, this support arm system is particularly well-suited for meeting high standards of corrosion protection and hygiene.

The tilting adaptor and enclosure coupling may optionally be mounted on the top or bottom of the enclosure. **They are not suitable for use as the base point of a system.** For this purpose, we recommend wall/base mountings, or with larger heights and widths, an additional pillar made of steel tubing or stainless steel (available on request).

**Material:**

Stainless steel 1.4305

**Protection category:**

IP 69K to DIN 40 050-9  
(resistant to high-pressure cleaning)

**Load information:**

see page 237.



### Support section CP-S, stainless steel

Attached to the connection components via 2 clamping screws.

**Dimensions:**

External diameter: 48.3 mm  
Wall thickness: 3.6 mm

**Material:**

Stainless steel 1.4301 (AISI 304)

**Surface finish:**

Brushed, grain 240

Other sizes to order available on request.

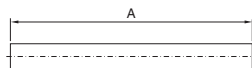
**Order example:**

U-shaped = CP 6660.200  
Dimension A = 300 mm  
Dimension B = 800 mm  
Dimension C = 240 mm

The minimum dimensions must be adhered to, because of the bending radius and insertion depth of the enclosure attachment, housing coupling and wall/base mountings.

**Straight**

$A_{min.} = 100 \text{ mm}$ ,  
 $A_{max.} = 2000 \text{ mm}$

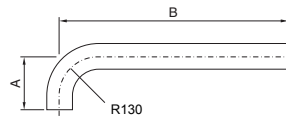


A mm	Weight kg	Model No. CP
500	2.0	<b>6660.050</b>
1000	3.9	<b>6660.010</b>
2000	7.8	<b>6660.020</b>
as per specifications A =	3.9 kg/m	<b>6660.000<sup>1)</sup></b>

<sup>1)</sup> Extended delivery times.

**L-shaped**

$A_{min.} = B_{min.} = 240 \text{ mm}$ ,  
 $B_{max.} = 1500 \text{ mm}$

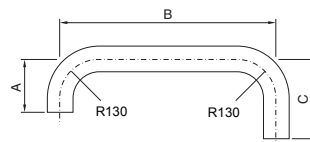


A mm	B mm	Weight kg	Model No. CP
240	500	2.6	<b>6660.110</b>
500	1000	5.5	<b>6660.120</b>
as per specifications A =	as per specifications B =	3.9 kg/m	<b>6660.100<sup>1)</sup></b>

<sup>1)</sup> Extended delivery times.

**U-shaped**

$A_{min.} = C_{min.} = 240 \text{ mm}$ ,  
 $B_{min.} = 410 \text{ mm}$ ,  
 $B_{max.} = 1500 \text{ mm}$



A mm	B mm	C mm	Weight kg	Model No. CP
240	800	800	6.6	<b>6660.210<sup>2)</sup></b> <b>6660.230<sup>3)</sup></b>
240	500	500	4.3	<b>6660.220<sup>2)</sup></b> <b>6660.240<sup>3)</sup></b>
as per specifications A =	as per specifications B =	as per specifications C =	3.9 kg/m	<b>6660.200<sup>1)2)</sup></b> <b>6660.250<sup>1)3)</sup></b>

<sup>1)</sup> Extended delivery times.

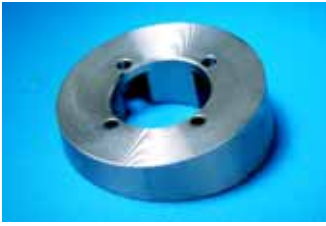
<sup>2)</sup> Enclosure top-mounted

<sup>3)</sup> Enclosure suspended

# Stainless steel

## Support arm system CP-S

1.6 B  
Stainless steel



### Tilting adaptor, 10° CP-S stainless steel

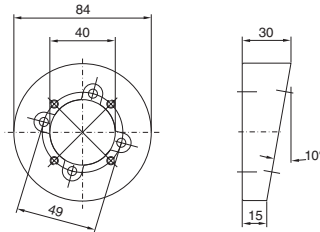
For mounting between the Command Panel and

- Enclosure attachment CP 6664.500 or
- Housing coupling CP 6664.000

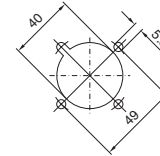
**Material:**  
Stainless steel 1.4305

Weight kg	<b>Model No. CP</b>
0.7	<b>6664.100</b>

**Supply includes:**  
Seal and assembly parts.



Mounting cut-out enclosure



### Enclosure attachment CP-S, stainless steel

For rigid fastening of the enclosure to the support section.

**Material:**  
Stainless steel 1.4305

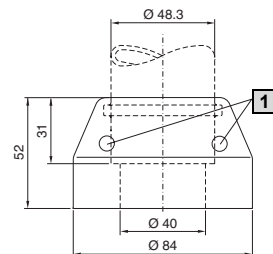
**Supply includes:**  
Seals and 2 clamping screws for support section CP-S, stainless steel.

**Note:**  
For assembly of a pedestal, modular, see page 317, 2 pieces are required.

Weight kg	<b>Model No. CP</b>
1.3	<b>6664.500</b>

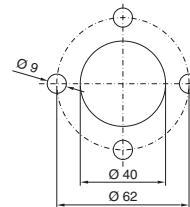
**+** **Accessories:**

Enclosure reinforcement, see page 317.

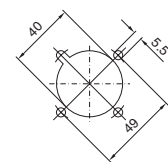


**1** Clamping screw

Mounting cut-out for pedestal, bottom



Mounting cut-out, enclosure



### Housing coupling CP-S stainless steel

For mounting on the vertical part of the support arm system.

**Rotation range:**  
Approx. 350°, lockable via knurled screw.

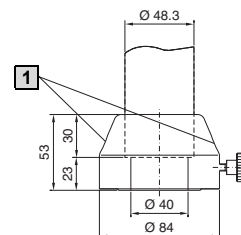
**Material:**  
Stainless steel 1.4305

**Supply includes:**  
Seals and 2 clamping screws for support section CP-S, stainless steel.

Weight kg	<b>Model No. CP</b>
1.1	<b>6664.000</b>

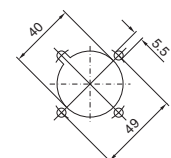
**+** **Accessories:**

Enclosure reinforcement, see page 317.



**1** Clamping screw

Mounting cut-out enclosure



## Support arm system CP-S



### Wall/base mounting, rigid, CP-S stainless steel

For attaching the support arm system to vertical or horizontal surfaces.

**Material:**

Stainless steel 1.4305

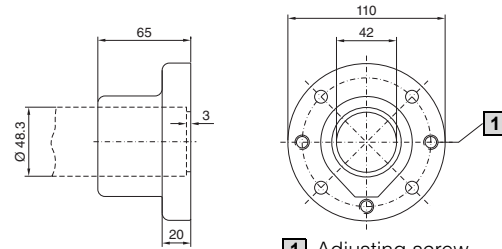
**Supply includes:**

Seals, 3 adjusting screws to compensate for any irregularities, and 2 clamping screws for support section CP-S, stainless steel.

Weight kg	Model No. CP
1.7	6663.000

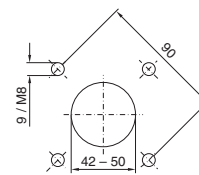
**+** **Accessories:**

Wall consoles, see page 316.



**1** Adjusting screw

Mounting cut-out



### Swivel base mount, CP-S stainless steel

For external mounting on

- Horizontal surfaces (suspended or top-mounted)
- Wall console (CP 6663.500 only)

**Rotation range:**

Approx. 350°, lockable via knurled screw.

**Material:**

Stainless steel 1.4305

**Supply includes:**

Seals and 2 clamping screws for support section CP-S, stainless steel.

**Note:**

Rotation range may be limited in 60° increments using a limit plate, supplied loose.

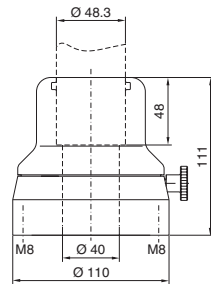
Attachment	Weight kg	Model No. CP
<b>1</b> rear, M8 thread	3.9	<b>6663.500</b>
<b>2</b> front, hole Ø 9 mm	4.5	<b>6663.400</b>

**+** **Accessories:**

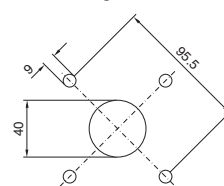
Wall consoles, see page 316.



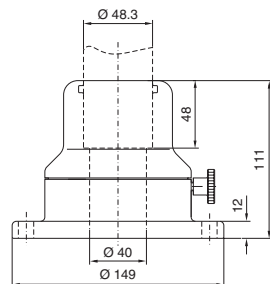
**1** Rear attachment CP 6663.500



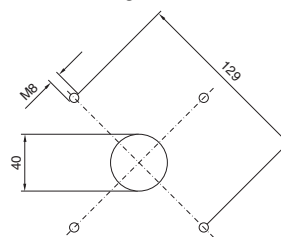
Mounting cut-out



**2** Front attachment CP 6663.400



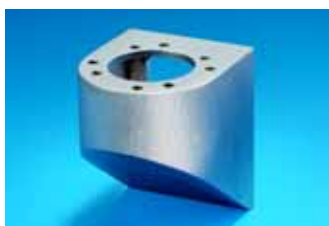
Mounting cut-out



# Stainless steel

## Support arm system CP-S

1.6 B  
Stainless steel



### Wall console CP-S stainless steel

With holes for mounting

- Base mount, swivel, CP-S (CP 6663.500), with 4 screws
- Wall/base mount, rigid, CP-S (CP 6663.000), with 4 screws and nuts.

**Material:**

Stainless steel 1.4301 (AISI 304)

**Surface finish:**

Brushed, grain 240

**Supply includes:**

Seals and assembly parts.

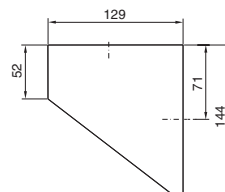


**1** Rear attachment, M8 thread

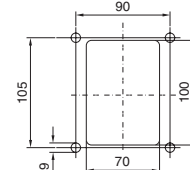
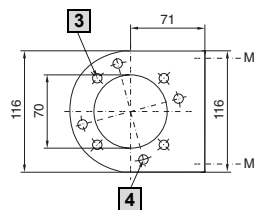
**2** Front, hole Ø 9 mm

Attachment	Weight kg	Model No. CP
rear, M8 thread	1.5	<b>6665.000</b>
front, hole Ø 9 mm	1.8	<b>6665.500</b>

Rear fastening



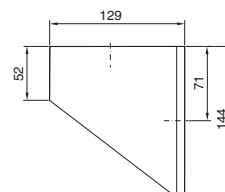
Mounting cut-out



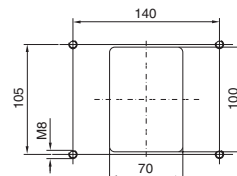
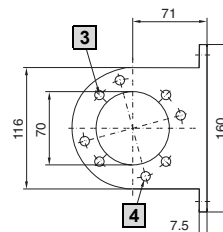
**3** Hole for PG 6663.000

**4** Hole for PG 6663.500

Front fastening

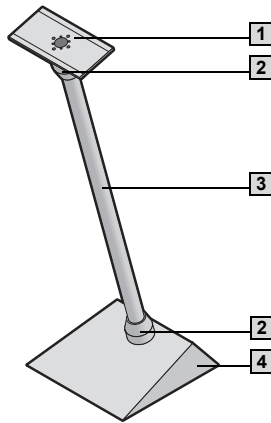


Mounting cut-out



**3** Hole for PG 6663.000

**4** Hole for PG 6663.500



### Pedestal, modular, CP-S stainless steel

For the configuration of compact operating stations.

May be compiled from the following modules:	Model No. CP	Page
<b>1</b> Enclosure reinforcement	<b>6143.310</b>	317
<b>2</b> 2 enclosure attachments top/bottom	<b>6664.500</b>	314
<b>3</b> Support section, straight (may be shortened to required length by sawing)	500 mm	313
	1000 mm	313
	2000 mm	313
<b>4</b> Pedestal base plate, small	<b>6143.300</b>	317

Detailed drawing, see page 1223.



### Enclosure reinforcement CP-S stainless steel

For external or internal reinforcement of stainless steel enclosures of a corresponding size. Smaller enclosures may also be mounted directly without a flange.

- For use with
- Enclosure attachment CP 6664.500
  - Housing coupling CP 6664.000

**Material:**  
Stainless steel 1.4301 (AISI 304)

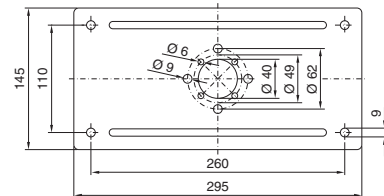
**Surface finish:**  
Brushed

**Supply includes:**  
Assembly parts for the enclosure and support section plus 2 seals.

Packs of	Model No. CP
1	<b>6143.310</b>

#### ⊕ Accessories:

Enclosure attachment CP 6664.500, see page 314.  
Housing coupling CP 6664.000, see page 314.



### Pedestal base plate, small

With reinforcement bracket for assembling a support section via an enclosure attachment.

- With one hole at the rear for commercially available cable conduit gland M20.
- With two holes at the top (including sealing bung) for lower base attachment cross member.
- Prepared on the inside for a cable clamp DK 7077.000 or DK 7078.000 for strain relief.

**Material:**  
Stainless steel 1.4301 (AISI 304)

**Surface finish:**  
Brushed

Packs of	Model No. CP
1	<b>6143.300</b>

**Supply includes:**  
Assembly parts for enclosure attachment plus seal.

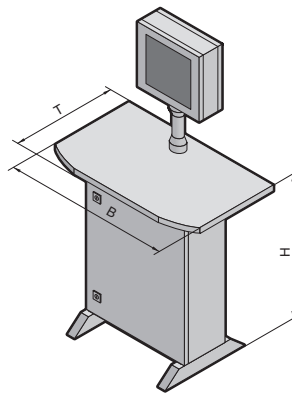
**Note:**  
Commercially available screws up to M8 may be used for floor attachment.

#### ⊕ Accessories:

Cable clamp DK 7077.000 or DK 7078.000, see page 1064.

# Stainless steel

## IW operating station



1.6 B  
Stainless steel

Complete solution for use in areas where hygiene is important. All that is needed is a standard commercially available tower PC up to W/H/D: 220 x 530 x 600 mm (max. 20 kg) and a mouse.

**Protection category:**  
IP 66 to EN 60 529/09.2000, complies with NEMA 4x.

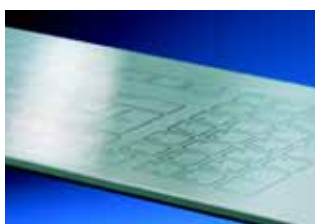
**!** **Also required:**  
Connection cable for infeed, see page 1030.

**Note:**  
Supplied unassembled. All components may also be ordered individually.

**Detailed drawing,**  
see page 1224.

Delivery times available on request.

Width (B1) mm	Packs of	900	Page
Height (H1) mm		875	
Depth (T1) mm		600	
<b>Model No. IW</b>	1	<b>6920.010</b>	
<b>Supply includes</b>			
Enclosure for tower PC, stainless steel 1.4301 (AISI 304)			319
Worktop, stainless steel, prepared for stainless steel keyboard 482.6 mm (19")/4 U			319
Enclosure attachment CP-S, stainless steel			314
Support section CP-S, stainless steel, 500 mm long (may be shortened)			313
Housing coupling CP-S, stainless steel			314
Premium TFT 17", IP 69K			1133
Power pack for TFT			1134
Connection cable for power pack			1134
Cross-member, stainless steel			319
Stainless steel keyboard 482.6 mm (19")/4 U			1139
<b>Lock systems</b>			
Standard double-bit lock insert may be exchanged for 41 mm lock inserts, lock cylinder insert, plastic handle and T handles, type C, see page 954 – 956.			



**Stainless steel keyboard**  
see page 1139.



**Premium TFT 17"**  
see page 1133.

## IW enclosure for tower PC



Compact, connection-ready enclosure for standard commercially available tower PCs, up to W/H/D: 220 x 530 x 600 mm (max. 20 kg). The rear interfaces of the PC are readily accessible with the door open.

### Roof prepared for mounting

- worktop IW 6902.340/.350
- beneath surfaces

### Base prepared for mounting

- cross-member IW 6902.050
- on surfaces

### Material:

Enclosure:  
Stainless steel 1.4301 (AISI 304),  
brushed grain 240  
Base for tower PC:  
Sheet steel,  
powder-coated in textured RAL 7015.

### Protection category:

IP 66 to EN 60 529/09.2000, complies with NEMA 4x (if the openings in the enclosure are covered or sealed in accordance with the protection category).

### Supply includes:

Enclosure sealed all round, r/h door hinge, with screw-fastened base on the inside of the tubular door frame to accommodate a tower PC, locked at the side with 2 fitted cam locks, retaining strap to secure the tower PC to the base.

### Side panel right:

- With fitted socket strip with 3 sockets, overvoltage protection and interference suppressor filter on the inside.
- Hole for cable gland M20 supplied loose, brass, for cable entry.

Rear panel with cut-out for use of the connector gland SZ 2400.500, supplied loose,

Delivery times available on request.

### Detailed drawing,

see page 1224.

	Enclosure for tower PC	Page
<b>Width (B) mm</b>	760	
<b>Height (H) mm</b>	760	
<b>Depth (T) mm</b>	300	
<b>Model No. IW</b>	<b>6900.310</b>	
Weight (kg)	53	

### Accessories

Cross-member, stainless steel	6902.050	see below
Worktop, stainless steel, prepared for stainless steel keyboard	6902.340	see below
Worktop, stainless steel, solid	6902.350	see below

### Lock systems

Standard double-bit lock insert may be exchanged for 41 mm lock inserts, lock cylinder insert, plastic handles and T handles, type C, see page 954 – 957.



### Cross member, stainless steel

#### for IW 6900.310

To increase stability, the cross-member protrudes 120 mm in front of and behind the IW enclosure.

### Material and surface finish:

Stainless steel, 1.4301 (AISI 304)  
brushed, grain size 240

### Detailed drawing,

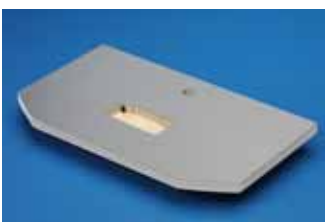
see page 1224.

To fit	Packs of	Model No. IW
IW 6900.310	2	<b>6902.050</b>



### Accessories:

Levelling feet SO 2859.000,  
see page 907,  
twin castors,  
see page 907.



### Worktop, stainless steel

For use in areas where enhanced hygiene is crucial.

### Material/surface finish:

Chipboard, laminated on both sides with stainless steel film, 1.4301 (AISI 304), with tough stainless steel edge strip, brushed surface finish.

### Note:

- Other sizes
- With drilled holes, recesses available upon request.

### Detailed drawing,

see page 1224.



Worktop	Width mm	Height mm	Depth mm	Model No. IW
Prepared for stainless steel keyboard 482.6 mm (19")/4 U	900	38	600	<b>6902.340</b>
Solid				<b>6902.350</b>

Delivery times available on request.



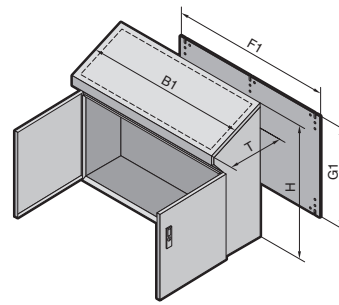
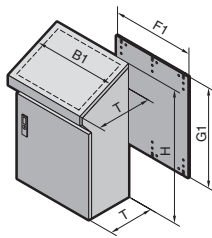
### Accessories:

Stainless steel keyboard 19"/4 U,  
see page 1139,  
support arm system CP-S, stainless steel,  
see page 313 – 316.

# Stainless steel

## One-piece consoles AP

1.6 B  
Stainless steel



### Material:

Stainless steel  
Enclosure: 1.5 mm  
Door or double door and console lid: 2.0 mm  
Mounting plate: Sheet steel 3.0 mm

### Surface finish:

Enclosure, door and console lid: Brushed, grain size 120  
Mounting plate: Zinc-plated

### Protection category:

IP 55 to EN 60 529/09.2000, complies with NEMA 12.

### Supply includes:

Enclosure sealed at the rear and sides, door or double door at the front, with locking rod, console lid with lid stay and stainless steel cam latched in the enclosure, two-piece gland plate, mounting plate, zinc-plated.

### Approvals,

see page 34.

### Detailed drawing,

see page 1192.

Width (B1) mm	Packs of	600	800	1000	1200	Page
Height (H) mm		960	960	960	960	
Depth (T) mm		400/480	400/480	400/480	400/480	
Mounting plate width (F1) mm		530	730	930	1130	
Mounting plate height (G1) mm		780	780	780	780	
Model No. AP	1.4301 (AISI 304)	1	<b>2683.600</b>	<b>2684.600</b>	<b>2685.600</b>	<b>2686.600</b>
	1.4404 (AISI 316L)	1	<b>2683.500<sup>1)</sup></b>	<b>2684.500<sup>1)</sup></b>	<b>2685.500<sup>1)</sup></b>	<b>2686.500<sup>1)</sup></b>
Door(s)		1	1	2	2	
Weight (kg)		52.0	65.2	79.5	90.3	

### Accessories

Base/plinth	Height 100 mm	1	2865.000	2869.000	2867.000	2870.000	902
	Height 200 mm	1	2875.000	2878.000	2885.000	2886.000	902

### Lock systems

Standard double-bit lock insert in the locking rod may be exchanged for 27 mm lock inserts, type A, see page 956 and for the Ergoform-S lock system, see page 953.

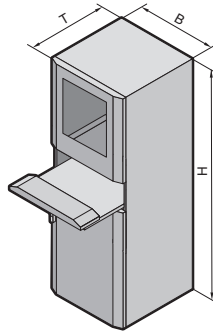
<sup>1)</sup> Delivery times available on request.



**Stainless steel wall console** mounted on the rear panel for an additional operating housing. Model No. see page 316.



**Cable gland, brass.** Model No. see page 1054.



### PC 4650.000

- with keyboard drawer
- Lock insert, lock no. 3524 E
  - Swing-down front for handrest
  - Mouse pad support (also suitable for IP 67 mouse), may optionally be used on the left or right
  - Hinged cable support

### Material:

Stainless steel  
Enclosure:  
10-fold profiled, 1.8 mm  
Rear door: 2.0 mm  
Gland plates: 1.5 mm  
Monitor field with single-pane safety glass for screen diagonal 482.6 mm (19").

### Surface finish:

Brushed, grain 240

### Protection category:

IP 55 to EN 60 529/09.2000, complies with NEMA 12.

### Supply includes:

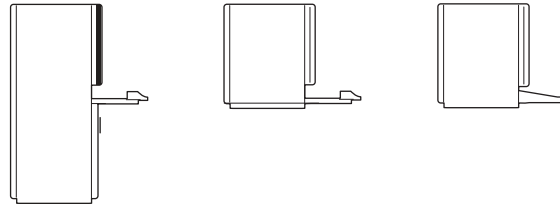
see page 1225.

### Available on request:

- Enclosure system PC with mounting compartment, large and drawer
- PC enclosure system with desk section
- PC enclosure system with drawer
- PC enclosure system with desk section

**Approvals,**  
see page 35.

**Detailed drawing,**  
see page 1225.



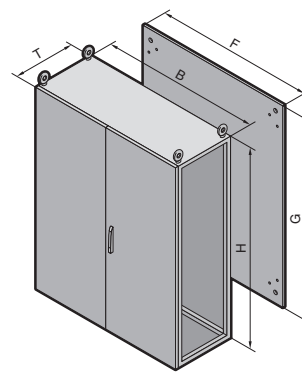
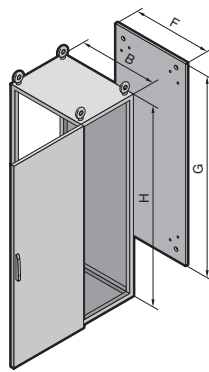
Design		Packs of	With keyboard drawer	Page
<b>Width (B)</b> mm			600	
<b>Height (H)</b> mm			1600	
<b>Depth (T)</b> mm			620	
<b>Model No. PC</b>	1.4301 (AISI 304)	1	<b>4650.000</b>	
	1.4404 (AISI 316L)	1	<b>4650.500<sup>1)</sup></b>	
<b>Weight (kg)</b>			115	
<b>Accessories</b>				
Base/plinth	Height 100 mm	1	2855.000	902
	Height 200 mm	1	2877.000	902
Levelling feet, 100 mm high		1 set	2859.000	907
Base/plinth trim, modular		4	2913.000	899
Adaptor sections, 482.6 mm (19")		4	4632.000	1089
Adaptor pieces, 482.6 mm (19")		8	4547.000	1090
<b>Lock systems</b>				

Standard double-bit lock insert may be exchanged for 27 mm lock inserts, type A, see page 956 or lock cylinder inserts, type B, see page 957.  
Lower and rear door prepared for installation of the Ergoform-S lock system, see page 953.

<sup>1)</sup> Delivery times available on request.

# Stainless steel

## Baying systems TS 8



1.6  
Stainless steel

### Material:

Sheet steel  
Enclosure frame, roof, rear panel and gland plates: 1.5 mm  
Door(s): 2.0 mm; Mounting plate: Sheet steel, 3.0 mm

### Surface finish:

Enclosure frame and gland plates: Uncoated  
Door, roof and rear panel: Brushed on the outside, grain size 400  
Mounting plate: Zinc-plated

### Protection category:

IP 55 to EN 60 529/09.2000, complies with NEMA 12.

### Supply includes:

Enclosure frame with door(s), mounting plate, gland plates, rear panel and roof, 2 support strips mounted in the enclosure depth (only with a depth of 600 mm).

### Note:

Due to the hardness of the material, we recommend using metal multi-tooth screw SZ 2486.300, see page 1011, for the interior installation.

### Approvals,

see page 30.

### Detailed drawing,

see page 1184.



### Rittal service:

TS stainless steel (1.4301), single-door, available on request as free-standing enclosures with fitted side panels in protection category IP 65 to EN 60 529/09.2000 and NEMA 4x; please add extension .640 to the Model No. (see page 917).

Width (B) mm	Packs of	800	1200	600	800	1200	600	800	1200	Page
Height (H) mm		1800	1800	1800	1800	1800	2000	2000	2000	
Depth (T) mm		400	400	500	500	500	600	600	600	
Mounting plate width (F) mm		699	1099	499	699	1099	499	699	1099	
Mounting plate height (G) mm		1696	1696	1696	1696	1696	1896	1896	1896	
Model No. TS	1.4301 (AISI 304)	1	8454.600	8456.600	8457.600	8455.600	8453.600	8452.600	8450.600	8451.600
	1.4404 (AISI 316L)	1	8454.500 <sup>1)</sup>	8456.500 <sup>1)</sup>	8457.500 <sup>1)</sup>	8455.500 <sup>1)</sup>	8453.500 <sup>1)</sup>	8452.500 <sup>1)</sup>	8450.500 <sup>1)</sup>	8451.500 <sup>1)</sup>
Door(s)		1	2	1	1	2	1	1	2	
Weight (kg)		112.9	170.4	92.5	116.3	174.9	104.4	129.7	194.7	

### Walls

Side panels	1.4301 (AISI 304)	2	8700.840	8700.840	8700.850	8700.850	8700.850	8700.060	8700.060	8700.060	917
	1.4404 (AISI 316L)	2	8705.840 <sup>1)</sup>	8705.840 <sup>1)</sup>	8705.850 <sup>1)</sup>	8705.850 <sup>1)</sup>	8705.850 <sup>1)</sup>	8705.060 <sup>1)</sup>	8705.060 <sup>1)</sup>	8705.060 <sup>1)</sup>	917
Divider panel		1	8609.840	8609.840	8609.850	8609.850	8609.850	8609.060	8609.060	8609.060	921
Divider panel for module plates		1	–	–	8609.100	8609.100	8609.100	8609.130	8609.130	8609.130	922

### Base/plinth

Components front and rear	Height 100 mm	1 set	8701.800	8701.200	8701.600	8701.800	8701.200	8701.600	8701.800	8701.200	899
	Height 200 mm	1 set	8702.800	8702.200	8702.600	8702.800	8702.200	8702.600	8702.800	8702.200	899
Trim panels (sides)	Height 100 mm	1 set	8701.040	8701.040	8701.050	8701.050	8701.050	8701.060	8701.060	8701.060	899
	Height 200 mm	1 set	8702.040	8702.040	8702.050	8702.050	8702.050	8702.060	8702.060	8702.060	899
Base/plinth trim, modular		4	2907.000	2907.000	2908.000	2908.000	2908.000	2913.000	2913.000	2913.000	899

### Accessories

Cable clamp rails	2	4192.000	4196.000	4191.000	4192.000	4196.000	4191.000	4192.000	4196.000	1061
Cable entry plates	2	8700.800	8700.120 <sup>2)</sup>	8700.600	8700.800	8700.120 <sup>2)</sup>	8700.600	8700.800	8700.120 <sup>2)</sup>	1045
Wiring plan pocket, sheet steel	1	4118.000	4116.000	4116.000	4118.000	4116.000	4116.000	4118.000	4116.000	967

### Lock systems

Standard double-bit lock insert may be exchanged for type F lock inserts and comfort handle, see page 947/956.

<sup>1)</sup> Delivery times on request. <sup>2)</sup> Packs of 4



### Supporting structure HD

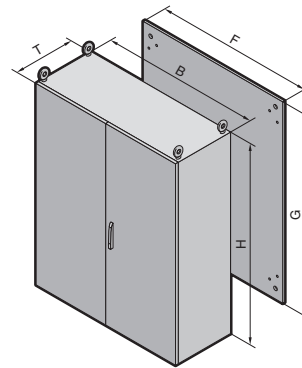
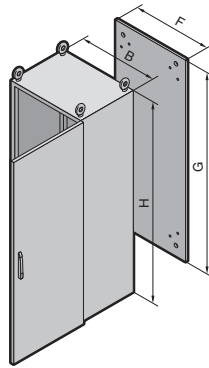
for hygienic, cleaning-optimised assembly of TS 8 enclosures in food production locations. Model No. see page 300.



### Sloped attachment HD

For controllable cleaning of the TS 8 enclosures. Available on request.

## Free-standing enclosures ES 5000



**Material:**

Stainless steel  
Enclosure: 1.8 mm  
Door(s): 2.0 mm  
Rear panel: 1.5 mm  
Mounting plate:  
Sheet steel 3.0 mm

**Surface finish:**

Enclosure, rear panel and doors:  
Brushed, grain size 240  
Mounting plate: Zinc-plated

**Protection category:**

IP 56 to EN 60 529/09.2000  
(single-door ES),  
IP 55 to EN 60 529/09.2000  
(double-door ES),  
complies with NEMA 12.

**Supply includes:**

Enclosure, closed top and sides,  
removable rear panel,  
r/h door hinge, can be changed  
to opposite side,  
except ES 5455.600;  
130° hinges,  
mounting plate,  
three-part gland plates.

**Note:**

Due to the hardness of the  
material, we recommend using  
metal multi-tooth screw  
SZ 2486.300, see page 1011,  
for the interior installation.

**Approvals,**

see page 32.

**Detailed drawing,**

see page 1188/1189.

Width (B) mm	Packs of	600	600	800	800	1000	1200	Page
Height (H) mm		1600	1800	1800	2000	1800	2000	
Depth (T) mm		400	500	500	600	400	500	
Mounting plate width (F) mm		499	499	699	699	899	1099	
Mounting plate height (G) mm		1496	1696	1696	1896	1696	1896	
Model No. ES	1.4301 (AISI 304)	1	<b>5450.600</b>	<b>5451.600</b>	<b>5452.600</b>	<b>5453.600</b>	<b>5454.600</b>	<b>5455.600</b>
	1.4404 (AISI 316L)	1	<b>5450.500<sup>1)</sup></b>	<b>5451.500<sup>1)</sup></b>	<b>5452.500<sup>1)</sup></b>	<b>5453.500<sup>1)</sup></b>	<b>5454.500<sup>1)</sup></b>	<b>5455.500<sup>1)</sup></b>
Door(s)		1	1	1	1	1	2	
Eyebolts		2	2	2	2	4	4	
Weight (kg)		92.5	169.6	131.8	154.0	146.9	205.4	

**Accessories**

Base/plinth	Height 100 mm	1	2865.000	2868.000	2866.000	2856.000	2867.000	2860.000	902
	Height 200 mm	1	2875.000	2876.000	2879.000	2880.000	2885.000	2887.000	902
Base/plinth trim, modular		4	2907.000	2908.000	2908.000	2913.000	2907.000	2908.000	899
System support rails		2	4361.000	4361.000	4362.000	4362.000	4347.000	4363.000	1000
Cable clamp rails		2	4191.000	4191.000	4192.000	4192.000	4336.000	4196.000	1061
Mounting bars		20	4596.000	4596.000	4598.000	4598.000	4599.000	4596.000	964
Utility lectern		1	4638.600	4638.600	4638.800	4638.800	-	4638.600	965
Wiring plan pockets		1	4116.000	4116.000	4118.000	4118.000	4124.000	4116.000	967

**Lock systems**

Standard double-bit lock insert may be exchanged for 27 mm lock inserts, type A, see page 956 and for lock system Ergoform-S, see page 953.

<sup>1)</sup> Delivery times available on request.



**Cable gland brass,**  
nickel-plated in IP 68  
(5 bar, 30 min),  
Model No. see page 1054.



**Signal pillar LED compact,**  
Model No. see page 1125.