

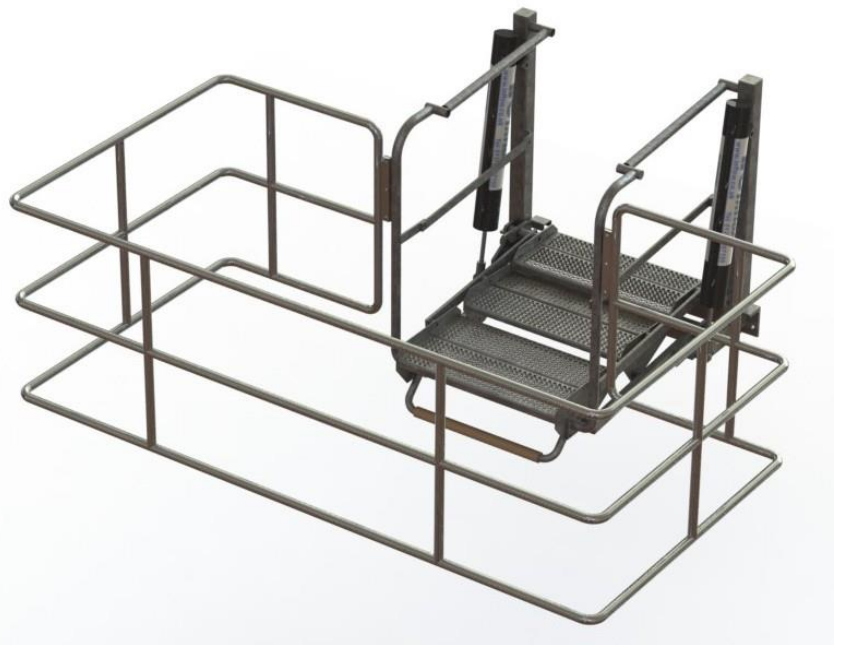
Flow-Step Folding Stairs

FOR SAFE ACCESS TO TANKER TOPS

The safest way to access the tops of road and rail tankers and ISO containers

Features and Benefits

- Simple design ensures steps automatically adjust to varying tanker heights
- Adjustable spring balance for easy operator handling
- Hinged safety step to prevent accidental trapping of feet
- Extended last step provides additional step area and greater stability
- Heavy duty nylon rope to assist pulling the stairs to their parked position
- Foot operated parking brake locks the stairs in parked position
- Safety chain locks the stairs in either parked or lowered position
- Galvanised finish as standard
- Optional 3 rail safety cage provides safe working area



Standards

The IFC flow-step range of folding stairs are designed to comply with the following safety/design standards:

- 98/37/EC machinery directive
- EN ISO 14122-2/3/4 code of practice industrial stairs/etc
- HSE guidelines on site based access to vehicle & prevention of falls from road tankers & tank containers enforcement standards

Uses include

- Tanker top loading
- Tanker inspection and maintenance
- Load inspection and sampling
- Tanker cleaning and decontamination
- Venting
- Tanker top Maintenance

Optional safety cage in various sizes
Stainless or aluminium cages available

Fulfil all current Health & Safety requirements and promotes safe working practice

S1006D Datasheet

TANKER LOADING & SAFE ACCESS SOLUTIONS

Leaders in tanker access systems

Technical data

Standard step sizes

800mm wide, 3 steps with 1250mm horizontal reach
 800mm wide, 4 steps with 1650mm horizontal reach
 800mm wide, 5 steps with 2050mm horizontal reach
 Also available in 2600mm wide, 3 steps

Standard safety cage sizes

800 mm wide steps
 1400 x 1400
 1400 x 2800
 1400 x 4000 (aluminium)

2600mm wide steps (all feature aluminium construction cages)

1400 x 4500

1400 x 6000

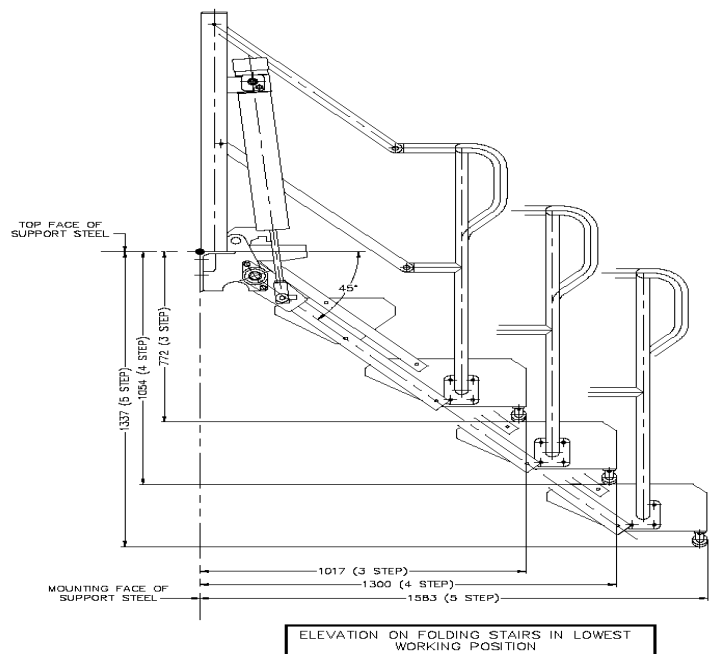
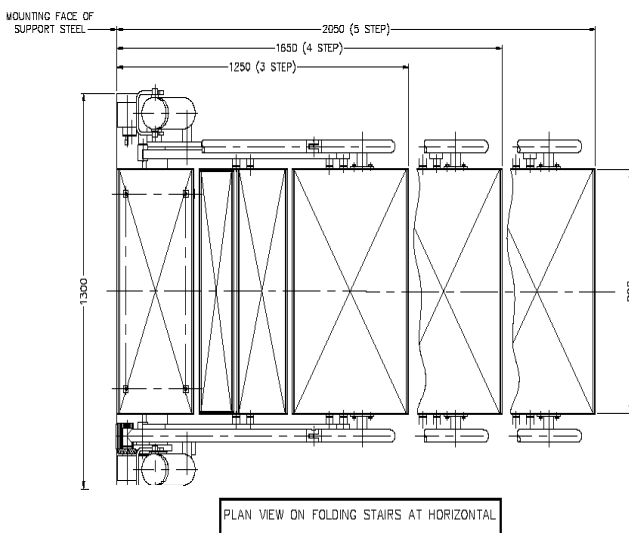
For larger cages sizes see IFC TOTAL TANK SAFETY CAGE systems

Specification

Type:	Self-levelling
No of steps	3, 4 or 5 as standard
Max reach in horizontal:	1250mm to 2050mm
Width of steps:	800mm or 2600mm
Balance:	Adjustable heavy duty compression spring/s
Parking Vertical:	Via spring loaded foot pedal
Adjustable chain parking:	Included
Safety cage:	Various options see technical data opposite for more details
Main bearing:	Sealed water tight with grease point
Pivot Points:	Teflon bushed
Tanker protection:	Bottom step fitted with rubber bumper bar
Material/finish	Mild steel, fully galvanised

Optional extras

- Pneumatic control system for greater operator safety and control
- Made to order special size cages in stainless steel or aluminium
- Safety in-fill grating wings cover the gap between the edge of the last step and the sides of the safety cage
- Positional sensors to track height of tanker and ensure stairs keep in contact with tanker top.
- Loading arm cut-outs to make it easier to lift an arm over the cage
- Internal compartment safety swing gates to adjust the working cage area to suit the tanker
- Drive off protection key interlock system used in conjunction with traffic barriers or other types of vehicle immobilisers
- Different stair parking angles
- 4th swivel bottom rail especially suitable for round barrel type tankers not fitted with top walkway



For all **YOUR** tanker access solutions



INDUSTRIAL FLOW CONTROL LTD, 3 RYDER WAY, BASILDON, ESSEX. SS13 1QH. UK

T: +44 1268 596900 E: sales@IFCinflow.com