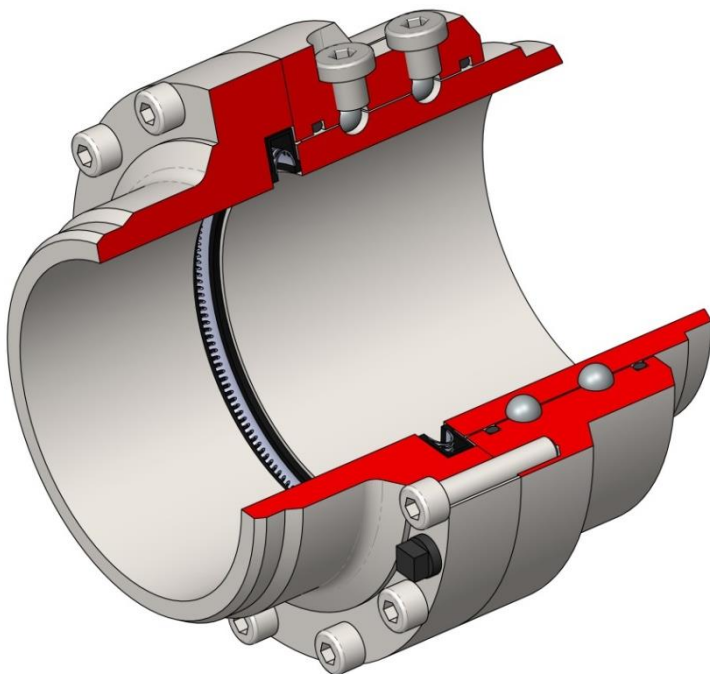


# Inflow Swivel Joints

## GENERAL PURPOSE PIPE SWIVEL JOINTS

Used in loading arms, floating suctions, condensation drains and anywhere rigid pipework requires dynamic rotation.



- Completely liquid tight to ensure pipeline integrity
- 3 part design allows for easy servicing and access to product seal
- PTFE seals as standard for superior liquid compatibility
- Available in aluminium, carbon and stainless steel to suit application
- Available in sizes from 2in to 4in, 6in on special requests
- Flanged, threaded or weld prep connections

S1048C Datasheet

LIQUID HANDLING SOLUTIONS

[www.IFCinflow.com](http://www.IFCinflow.com)

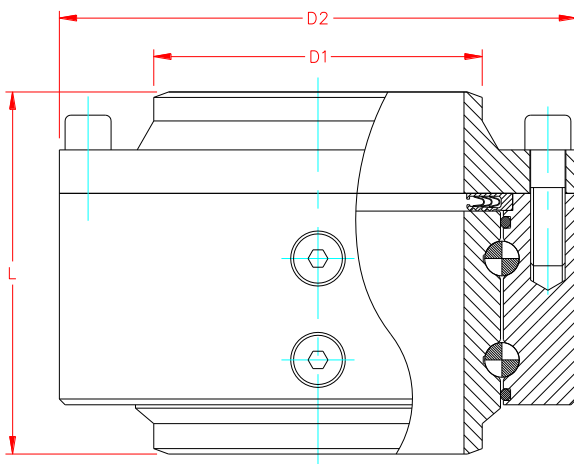
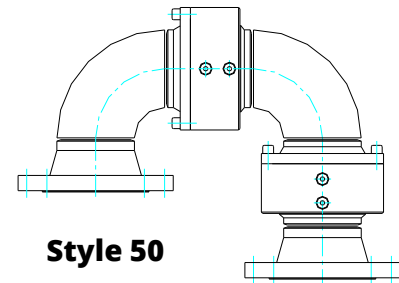
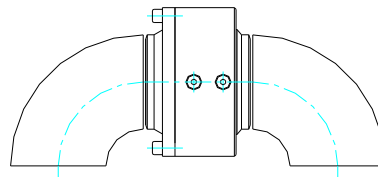
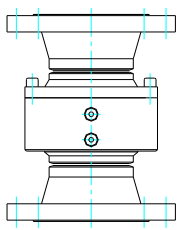
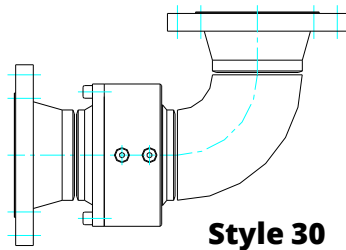
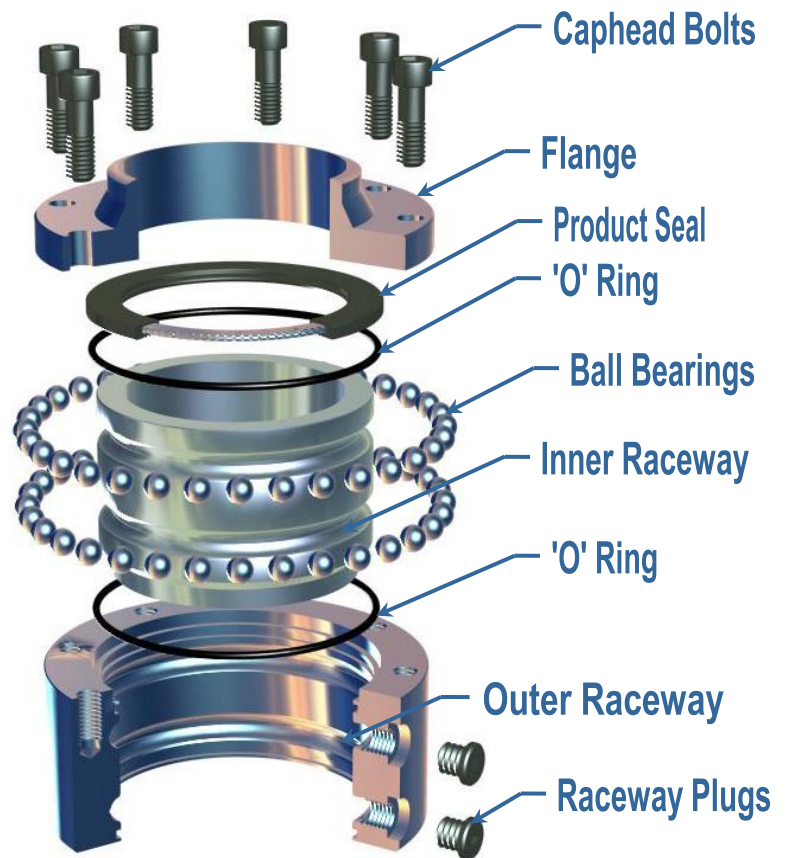
# Leaders in liquid handling systems

## Technical data

**Maximum Pressure:** Up to 36 Bar  
**Max Temperature:** Up to 230°C  
**Min Temperature:** Up to -50 C  
**Connection Options:** BSPT M/F  
 ANSI 150  
 PN16  
 Weld preparation to Sch 40  
 TTMA

## Materials of Construction

**Outer Body:** EN45 carbon Steel / 316L  
**Inner Body:** 304L / 316L / 30CrMo  
**Flange:** EN45 Carbon Steel / 316L / 304L  
**Product Seal:** P.T.F.E + 304 S/S Springs  
**Dust Seals:** PTFE encapsulated Viton  
**Ball-race bearings:** CG15 chrome alloy steel



Swivel Joint Dimensions (mm)				
D.N.	D1	D2	L	Weight
50 (2")	60	117	145	5.88Kg
80 (3")	88.9	152	155	8.8Kg
100 (4")	114.3	175	165	10.5Kg

For all **YOUR** liquid handling solutions



INDUSTRIAL FLOW CONTROL LTD, 3 RYDER WAY, BASILDON, ESSEX. SS13 1QH. UK

**T:** +44 1268 596900 **E:** sales@IFCinflow.com