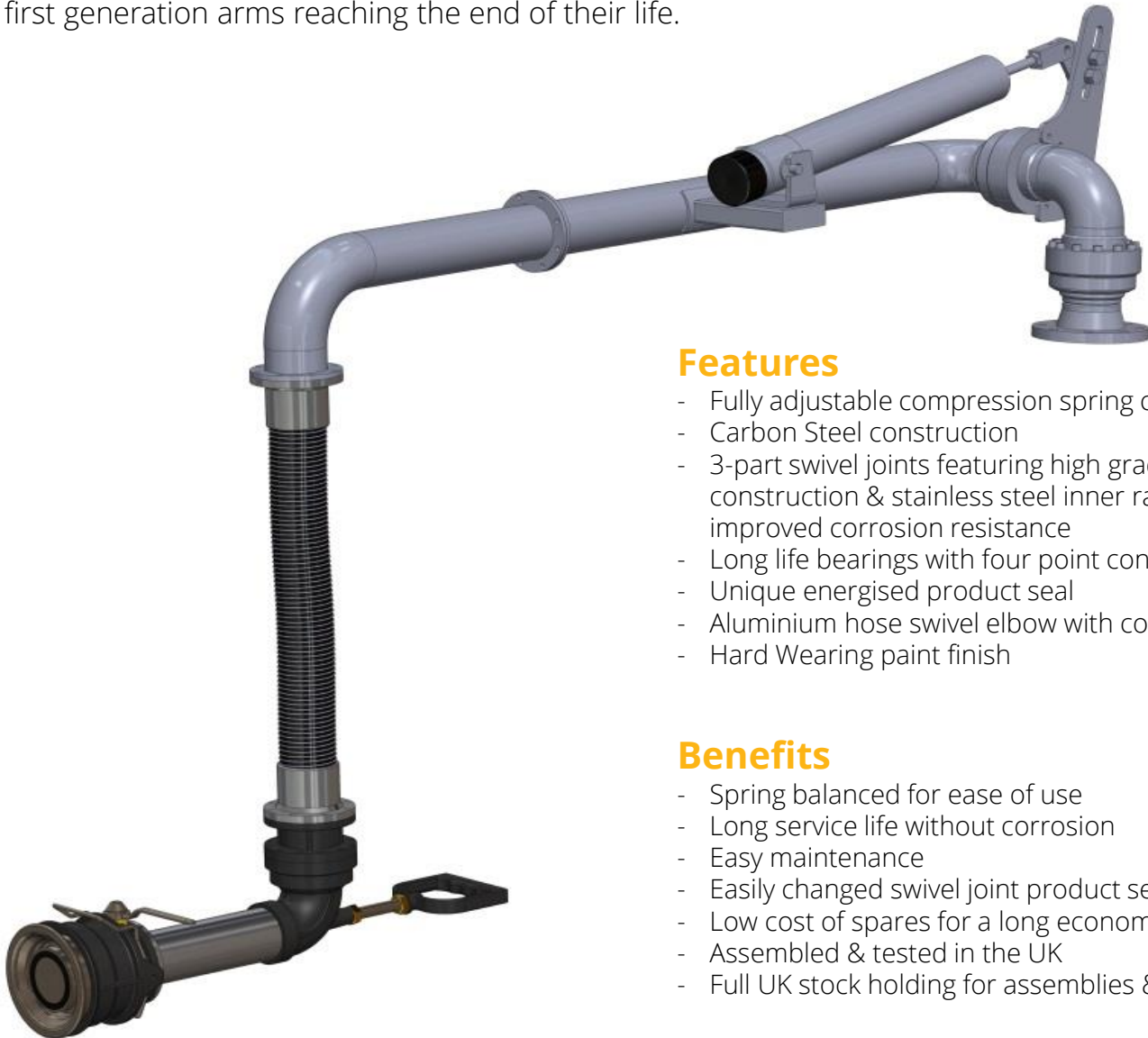


# Petro-Load Bottom Loading Arms

## PETROLEUM TANKER LOADING SOLUTIONS

The IFC Petro-Load 445 series loading arm is designed for heavy duty use at all types of petroleum, oil distribution & rail loading facilities, from terminals to distribution depots.

It is ideal for new applications requiring high performance at an acceptable cost or as replacement for first generation arms reaching the end of their life.



### Features

- Fully adjustable compression spring cylinder
- Carbon Steel construction
- 3-part swivel joints featuring high grade steel construction & stainless steel inner race way for improved corrosion resistance
- Long life bearings with four point contact
- Unique energised product seal
- Aluminium hose swivel elbow with control grip
- Hard Wearing paint finish

### Benefits

- Spring balanced for ease of use
- Long service life without corrosion
- Easy maintenance
- Easily changed swivel joint product seal
- Low cost of spares for a long economical life
- Assembled & tested in the UK
- Full UK stock holding for assemblies & spares

S1003E Datasheet

## PETROLEUM TANKER LOADING SOLUTIONS

# Leaders in tanker loading systems

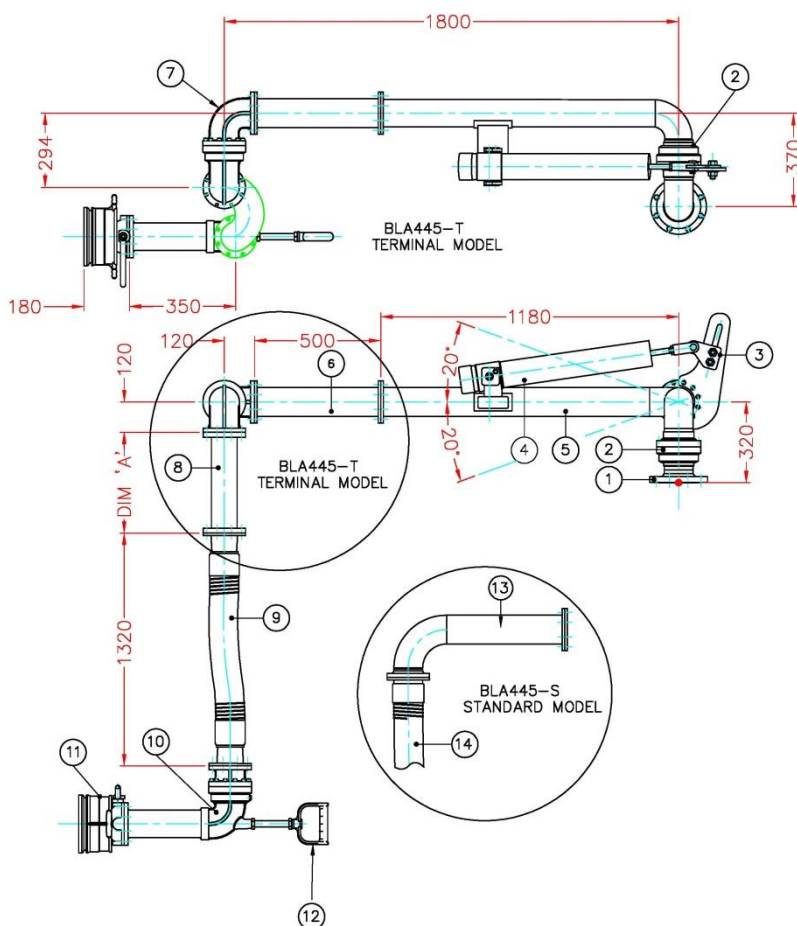
## Technical data:

### Specification:

<b>Type:</b>	<b>Suspended hose type</b>
<b>Connection terminal side:</b>	<b>4in ANSI 150 RF</b>
<b>Connection vehicle side:</b>	<b>4in API coupler manual or semi-auto, Ali body, Viton Seals</b>
<b>Arm balance:</b>	<b>Adjustable heavy duty compression spring in safety sealed tube cylinder</b>
<b>Flow rates:</b>	<b>2500 litre per minute maximum recommended 5.1 M/S</b>
<b>Pressure:</b>	<b>10barG maximum</b>
<b>Temperature:</b>	<b>-20°C/85°C</b>
<b>Pressure drop excluding API:</b>	<b>@ 2500 L/M SG 0.8 10 psi/0.7 bar</b>

### Specification & Materials of Construction:

<b>Base &amp; fulcrum swivel joint:</b>	<b>4in 3 part EN20/45 carbon steel outer flange &amp; body. 304SS inner race way</b>
<b>Primary Arm:</b>	<b>4in schedule 40 carbon steel</b>
<b>Balance assembly:</b>	<b>Cast steel spring with threaded rod adjustment</b>
<b>Outboard swivel:</b>	<b>3 part/4in aluminium flanged TTMA</b>
<b>Drop hose swivel:</b>	<b>3 part/4in aluminium flanged TTMA</b>
<b>3 part swivel seals:</b>	<b>Spring energised PTFE/PTFE O-ring</b>
<b>Drop hose:</b>	<b>4in composite type flanged TTMA - optional metallic/rubber</b>
<b>Drop spool:</b>	<b>4in variable length aluminium flanged TTMA</b>



ARM No.	DIM 'A'
1	N/A
2	400
3	800
4	1200
5	1600
6	N/A

ITEM	DESCRIPTION
1	4" ANSI 150RF W/N C/S INLET FLANGE
2	4" 3 PART C/S BASE/FULCRUM SWIVEL JOINT
3	SPRING RATE COMPENSATOR
4	COMPRESSION SPRING CYLINDER (100N/mm)
5	4" N.B. SCH 40 C/S PRIMARY ARM
6	4" TTMA FLANGED STRAIGHT SPOOL
7	4" ALUMINIUM APEX SWIVEL JOINT
8	4" TTMA FLANGED ALUMINIUM SPOOL
9	4" TTMA COMPOSITE/METALLIC HOSE
10	4" ALUMINIUM HOSE END SWIVEL JOINT
11	4" API SAFE LOAD DRY-BREAK COUPLER
12	OPERATOR HANDLE
13	4" TTMA FLANGED FIXED ELBOW SPOOL
14	4" TTMA COMPOSITE/METALLIC HOSE

For all **YOUR** tanker loading solutions



INDUSTRIAL FLOW CONTROL LTD, 3 RYDER WAY, BASILDON, ESSEX, SS13 1QH, UK

**T:** +44 1268 596900 **E:** sales@IFCinflow.com